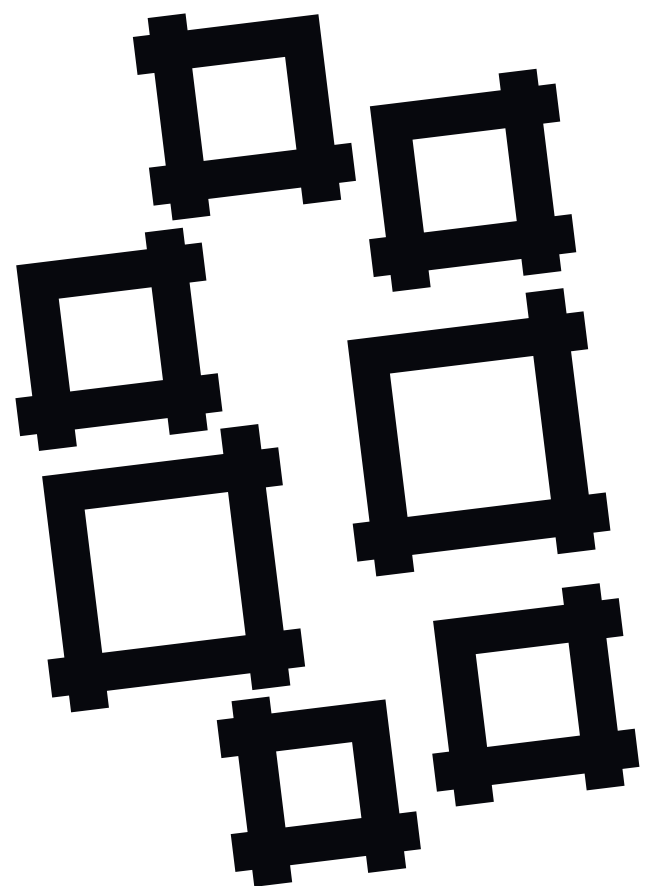


Life in layers

Peter Papcun



analysis



13th century



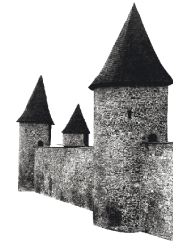
1st half of 14th century



2nd half of 14th century



1st half of 15th century



2nd half of 14th century



16th century



1699



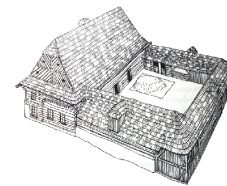
1731



1744



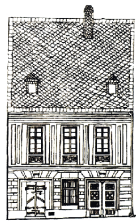
18th century



16th-18th century



1811



1st half of 19th century



1865



1865



1881



1895



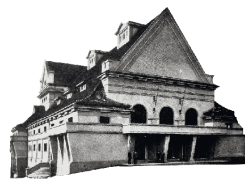
1911



1924



1st half of 20th century



1929



1934



1971



1977

Polička is a small town with 8000 inhabitants. It is located in the central-eastern part of the Czech Republic. Initially, small wooden family houses were built in Polička, which unfortunately were not preserved. The city walls were built in the 14th century, but the city was hit by fire several times and almost completely burned down. Significant construction did not begin until the second half of the 20th century. In the 21st century, the construction of independent bungalow houses began, creating satellite areas.

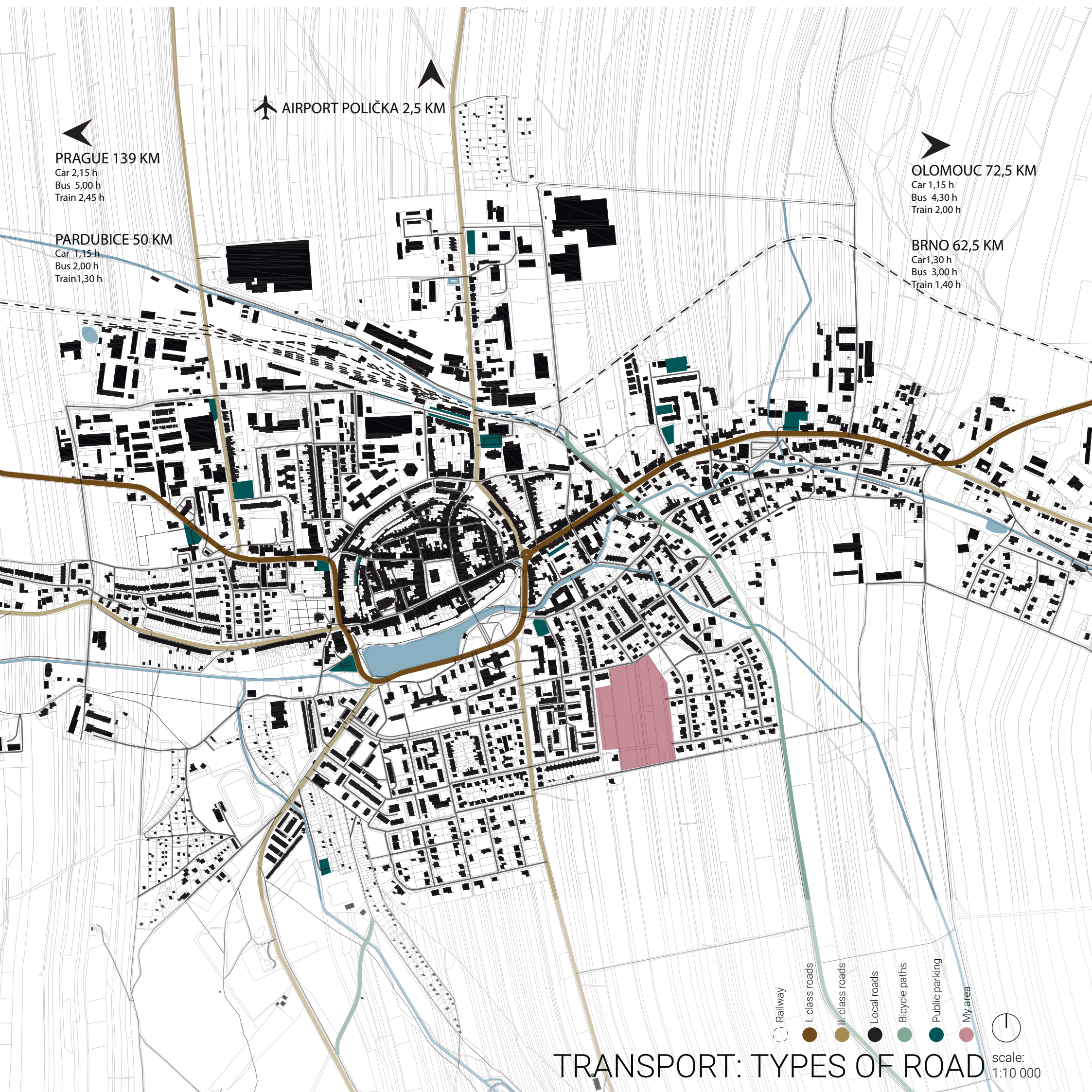
BUILDINGS OVER TIME



- 1845
- 1845 - 1865
- 1865 - 1912
- 1912 - 1941
- 1941 - 1962
- 1962 - 1986
- 1986 - 2000
- 2000 - 2021
- My area



HISTORICAL DEVELOPMENT scale: 1:5 000



AIRPORT POLIČKA 2,5 KM

PRAGUE 139 KM

Car 2,15 h
Bus 5,00 h
Train 2,45 h

PARDUBICE 50 KM

Car 1,15 h
Bus 2,00 h
Train 1,30 h

OLOMOUC 72,5 KM

Car 1,15 h
Bus 4,30 h
Train 2,00 h

BRNO 62,5 KM

Car 1,30 h
Bus 3,00 h
Train 1,40 h

- Railway
- I. class roads
- II. class roads
- Local roads
- Bicycle paths
- Public parking
- My area

TRANSPORT: TYPES OF ROAD scale: 1:10 000



- Urban forest
- Cultivated park
- Apartment housing areas
- Family housing areas
- Public facilities areas
- Allotments
- Stream bank vegetation
- Cemetery
- Industrial and other areas
- Project site

URBAN GREENERY ANALYSIS

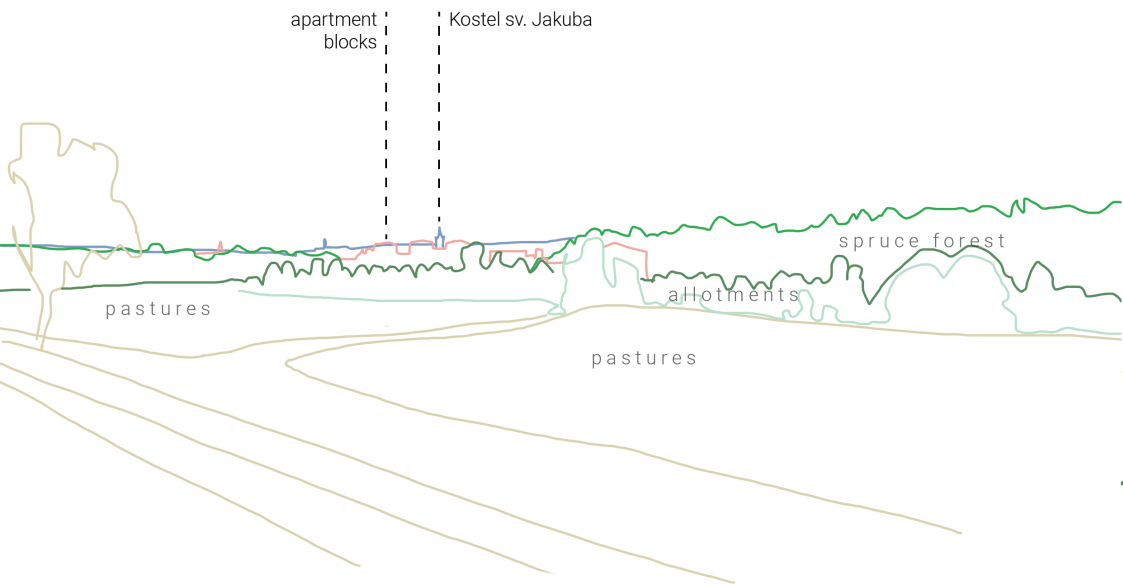
scale: 1:5 000



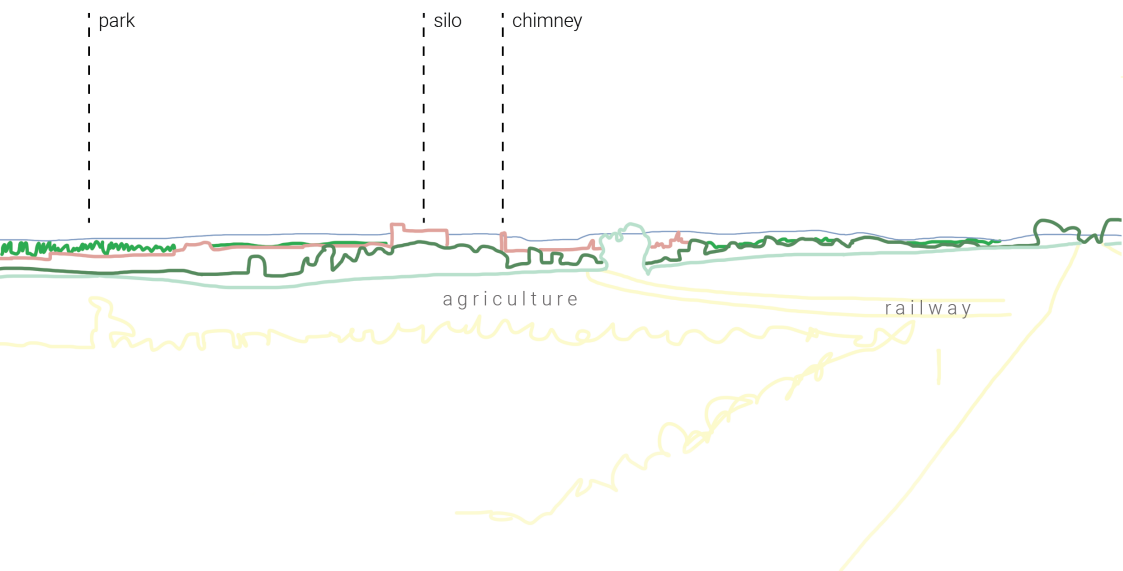


PANORAMIC VIEW 1 - SOUTH

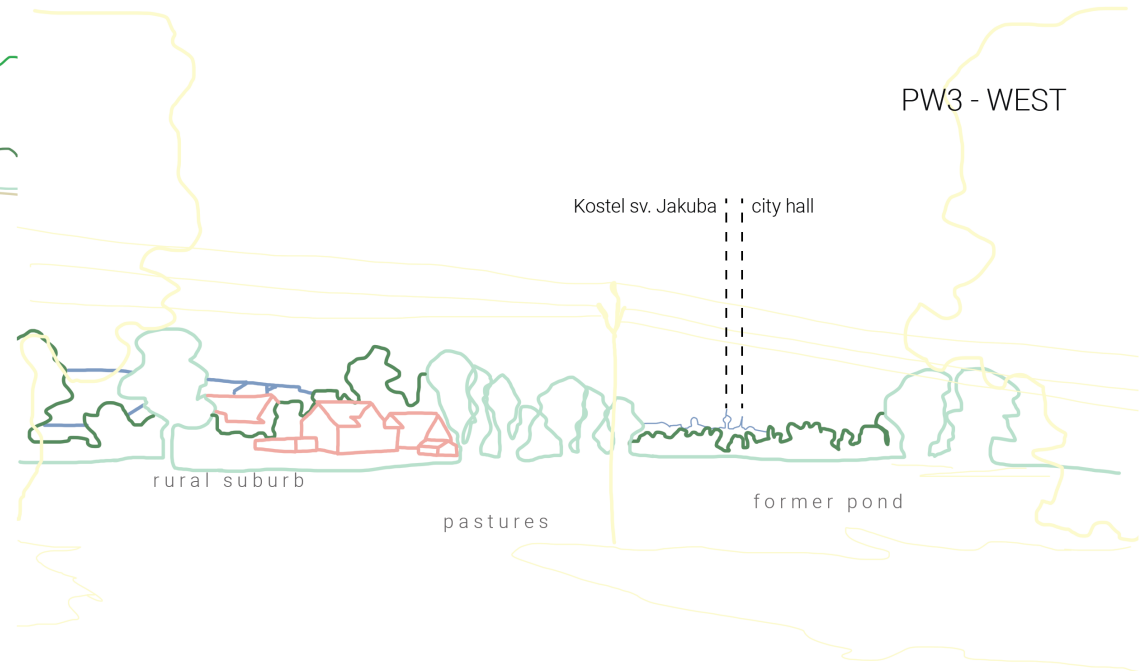
PW2 - SOUTHWEST



PW4 - NORTHWEST



PW3 - WEST



PANORAMIC VIEWS 2, 3, 4

Strengths

- Low unemployment
- Good access to the city center
- City amenities
- Train and bus station

Weaknesses

- The population is dependent on agriculture and industry
- Long distance to regional cities (60-80 km)
- Inconsistent style of construction
- Low number of bus stops
- Almost no bike path

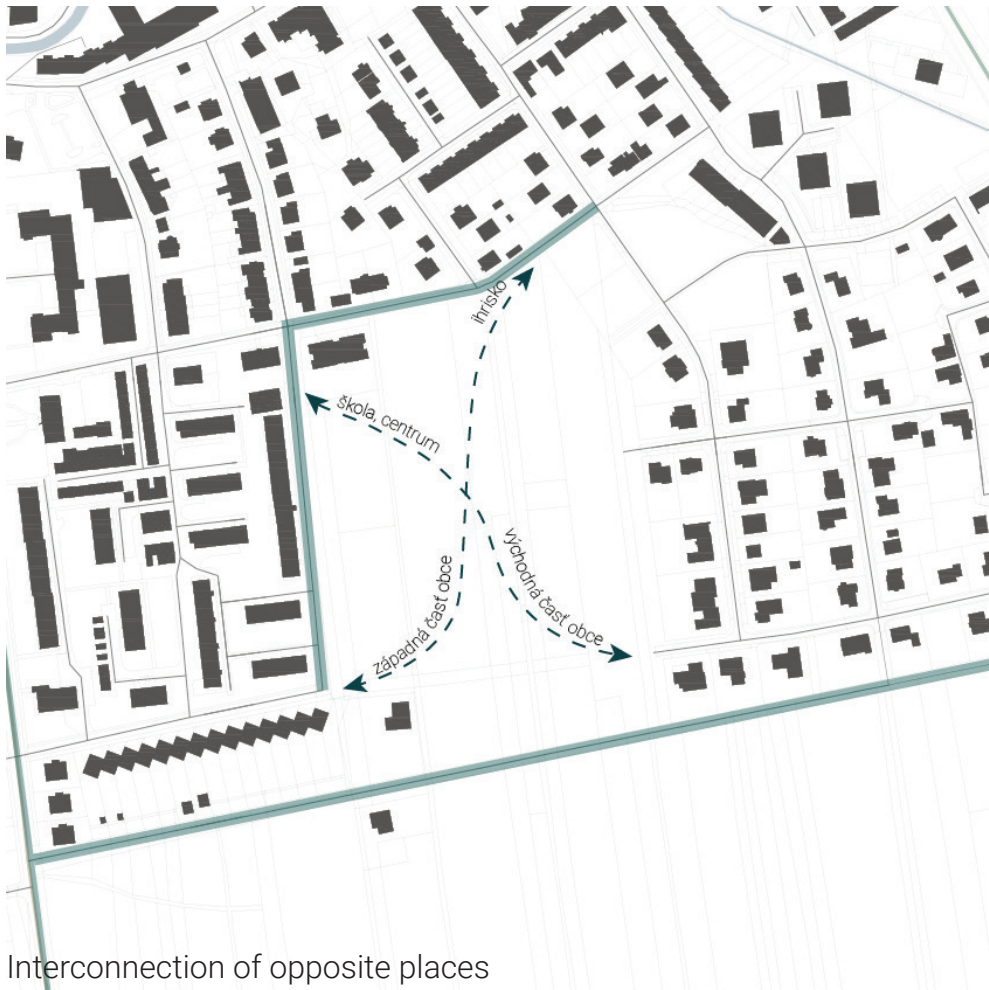
Opportunities

- Land - "green meadow"
- Not far from the area is a bike path
- Tourism opportunities

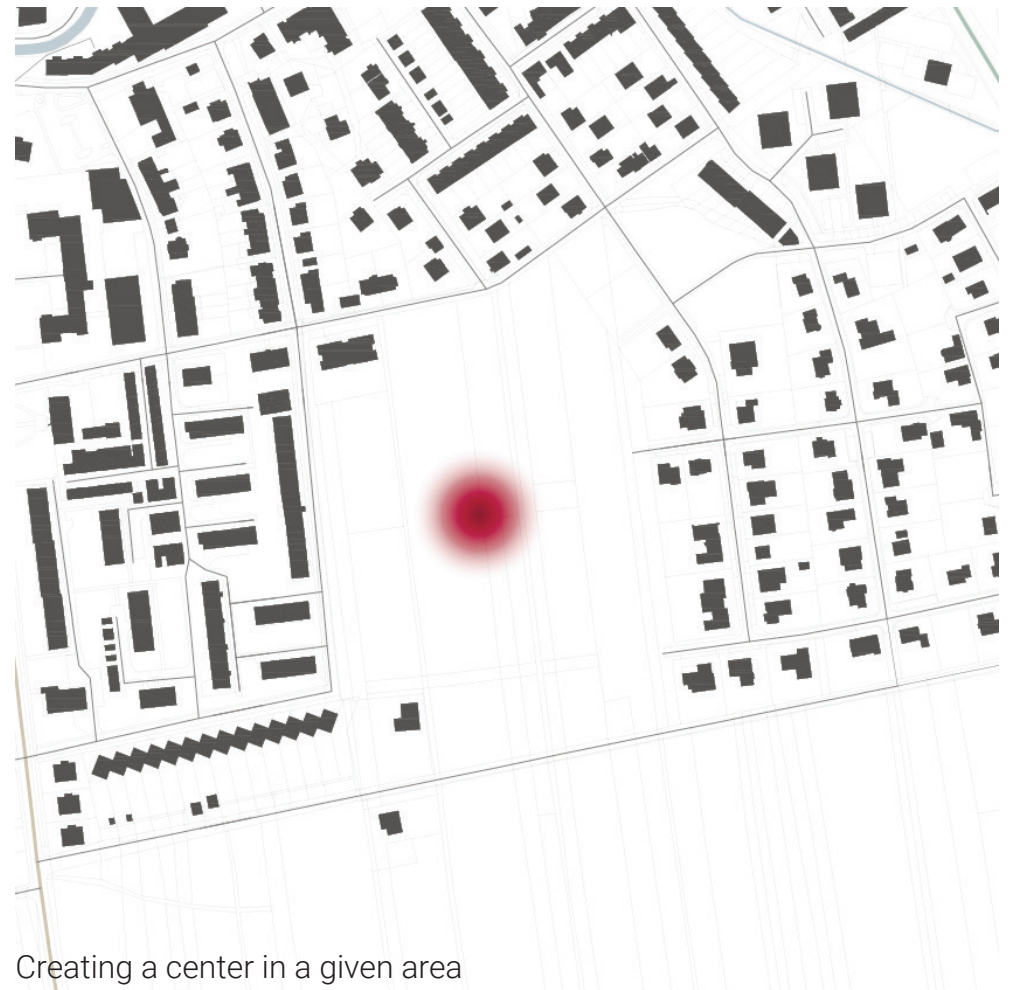
Threats

- Spatial plan supporting the construction of detached houses
- Low population density outside the town center

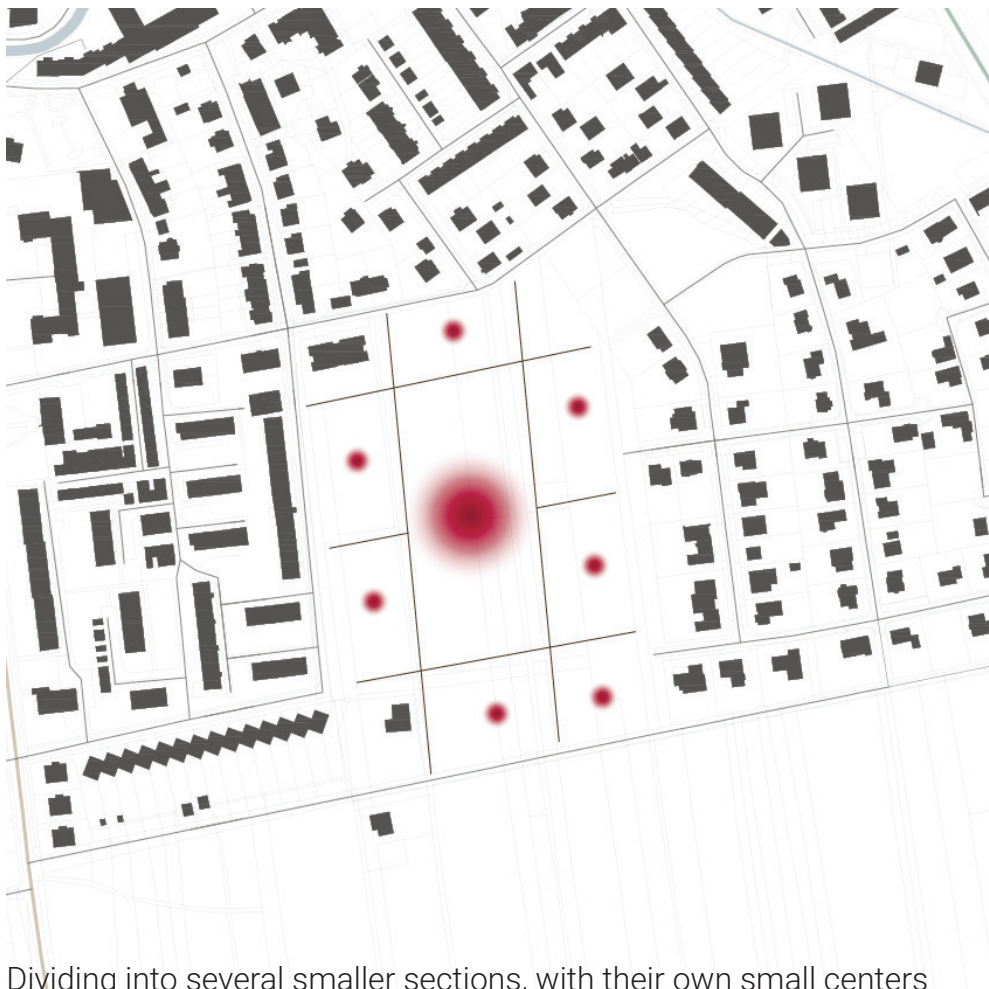
design



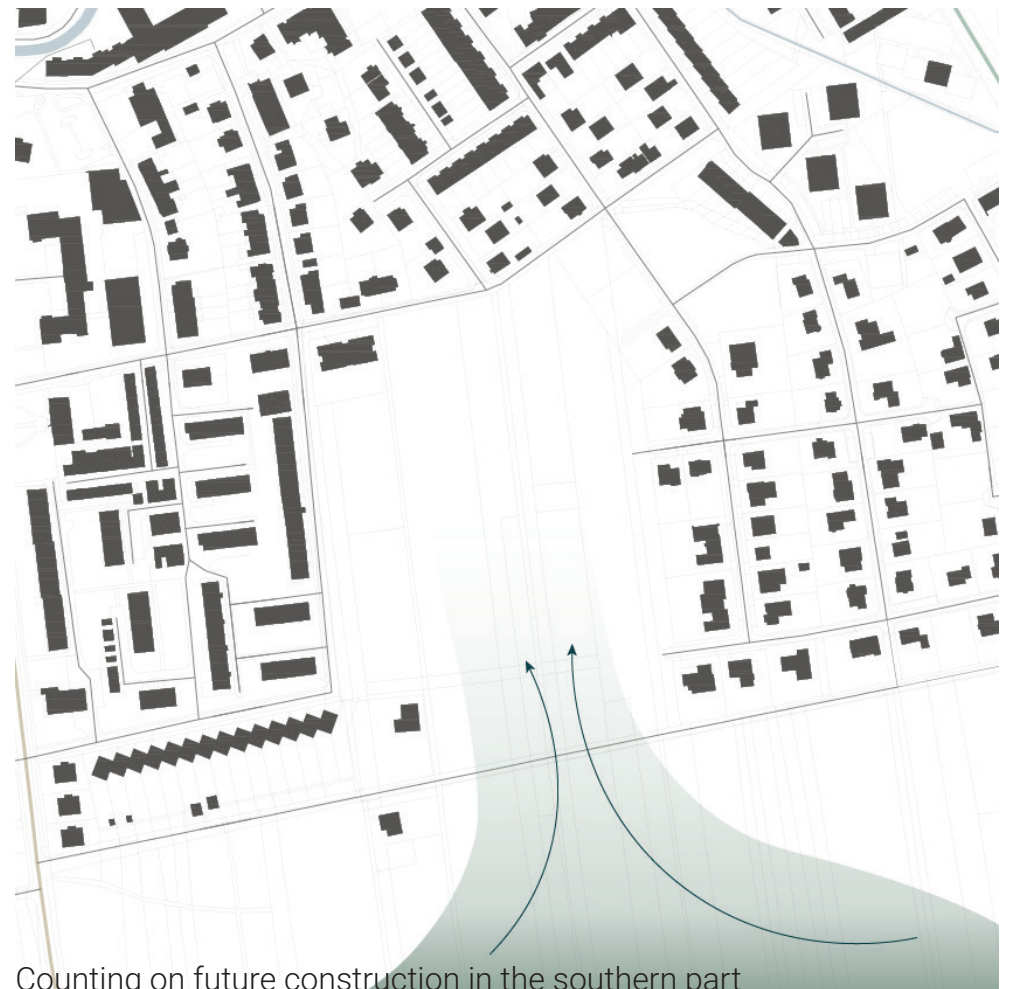
Interconnection of opposite places



Creating a center in a given area

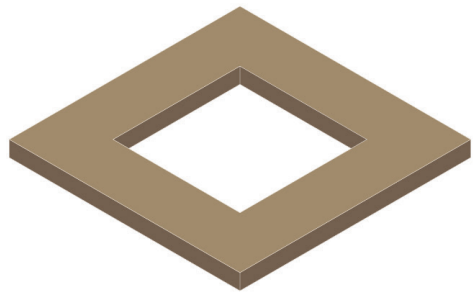


Dividing into several smaller sections, with their own small centers

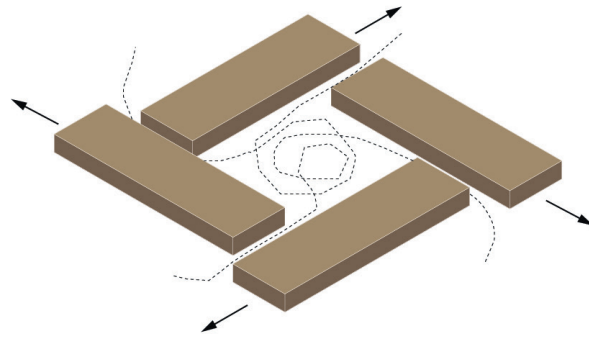


Counting on future construction in the southern part

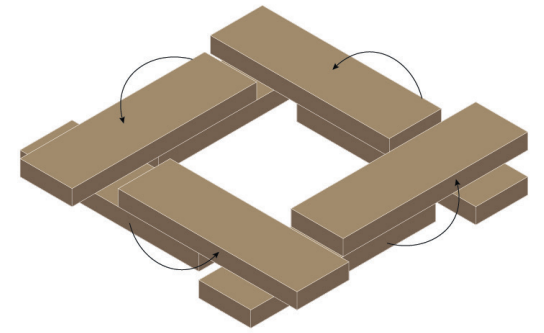




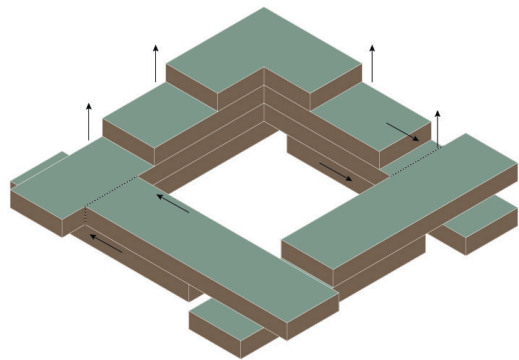
Basic shape



Loosening

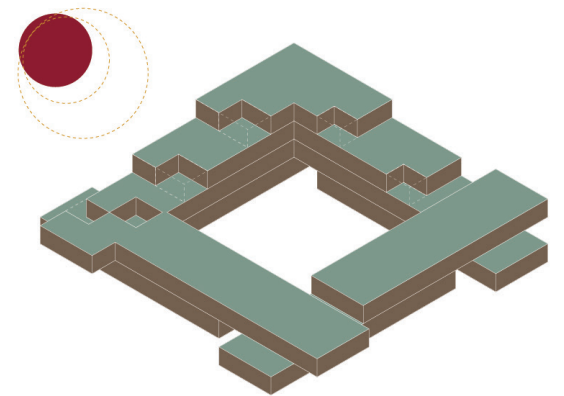


2nd floor

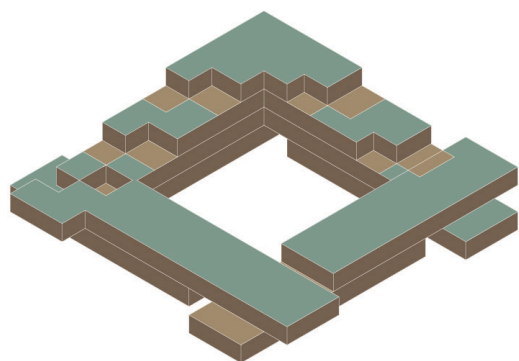


Green roofs

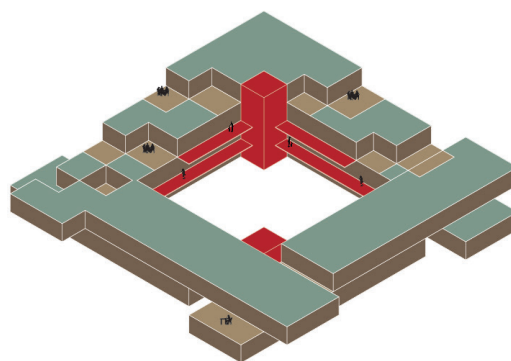
BUILDING SHAPE CONCEPT



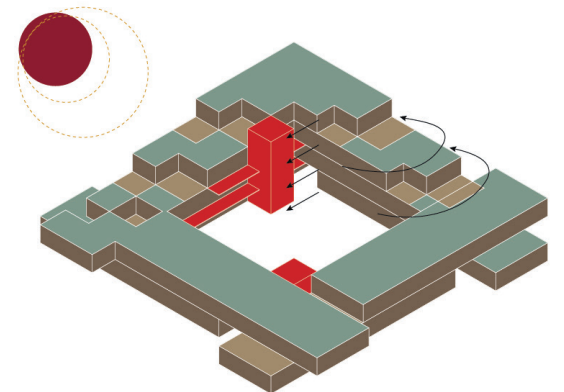
Adaptation of the terraces to the sun



Walking areas



Vertical communication with the gallery



One gallery to the north

Each of us has experienced loneliness. Loneliness, not caused by being alone, but by the way we are or rather are not socially connected to our surroundings. We can also experience loneliness at a music concert surrounded by thousands of people. This is because we have no social connection with them. In the long run, this loneliness can affect our mental health, including depression, and may even increase the susceptibility for diseases such as diabetes, sleep disorders, overweight, or cancer. So why are we building our homes by becoming more and more disconnected from our surroundings?

Family house with a garden - "the most perfect way of living that an individual can achieve". According to sociologist Hartmut Häussermann, the family home is primarily a symbol of independence, security and personal freedom. Owning a piece of land with a house, gives the impression of anchoring on the ground, and thus in society. Currently, daily commuting to a larger city is no exception for work from a distance of fifty or more kilometers and then returning home in the evening, straight to bed.

Fortunately, Polička is a place that is not currently threatened by economic emigration, ie residents do not travel daily to work in the nearest major cities. On the contrary, people from the surrounding villages travel to Polička for work. This is due to the geographical location of Polička. The shelf is approximately in the middle between two regional cities - Brno and Pardubice, from which it is 60-80 km away. Also, it is also due to the greater number of agricultural and industrial companies in this city. However, it is necessary to have bear in mind that the number of jobs in this sector has been declining for a long time, while the number of jobs has been increasing in the service sector. If Polička is not able to create a working environment for the formation of these types of jobs, people will have to come to terms with travel.

The threat that arises during the construction of monofunctional colonies of family houses is that if we build family houses and "bungalows" indefinitely, as is happening on the outskirts of Polička, the city limits will only increase. We won't even realize it, and the daily commute by car to work will not be to the next town, but to the town center, which will be further and further from the Polička border.

However, it is not possible to underestimate the motive of your own outdoor living space. For example, the population living in apartments travels to its gardens with a primitive shelter or to their huts on weekends. The garden is a crucial factor why people crave houses.

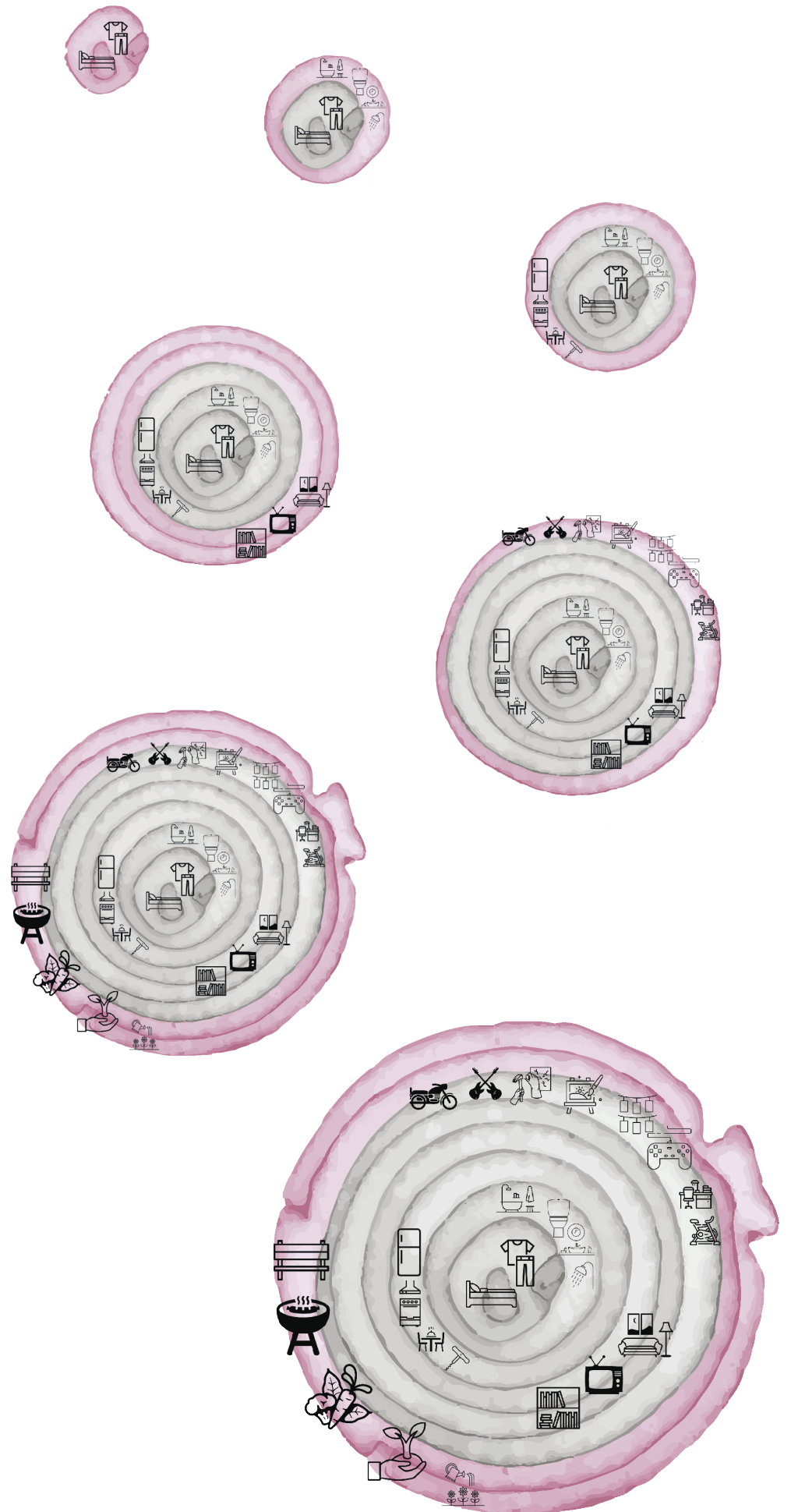
But the construction of typical houses are dangerous in a broader perspective. They are often oversized and only partially used after the departure of the offspring. Another question is, what is the life of children who live in these houses and are taken by car to school every day, or are forced to use irregular bus connections?

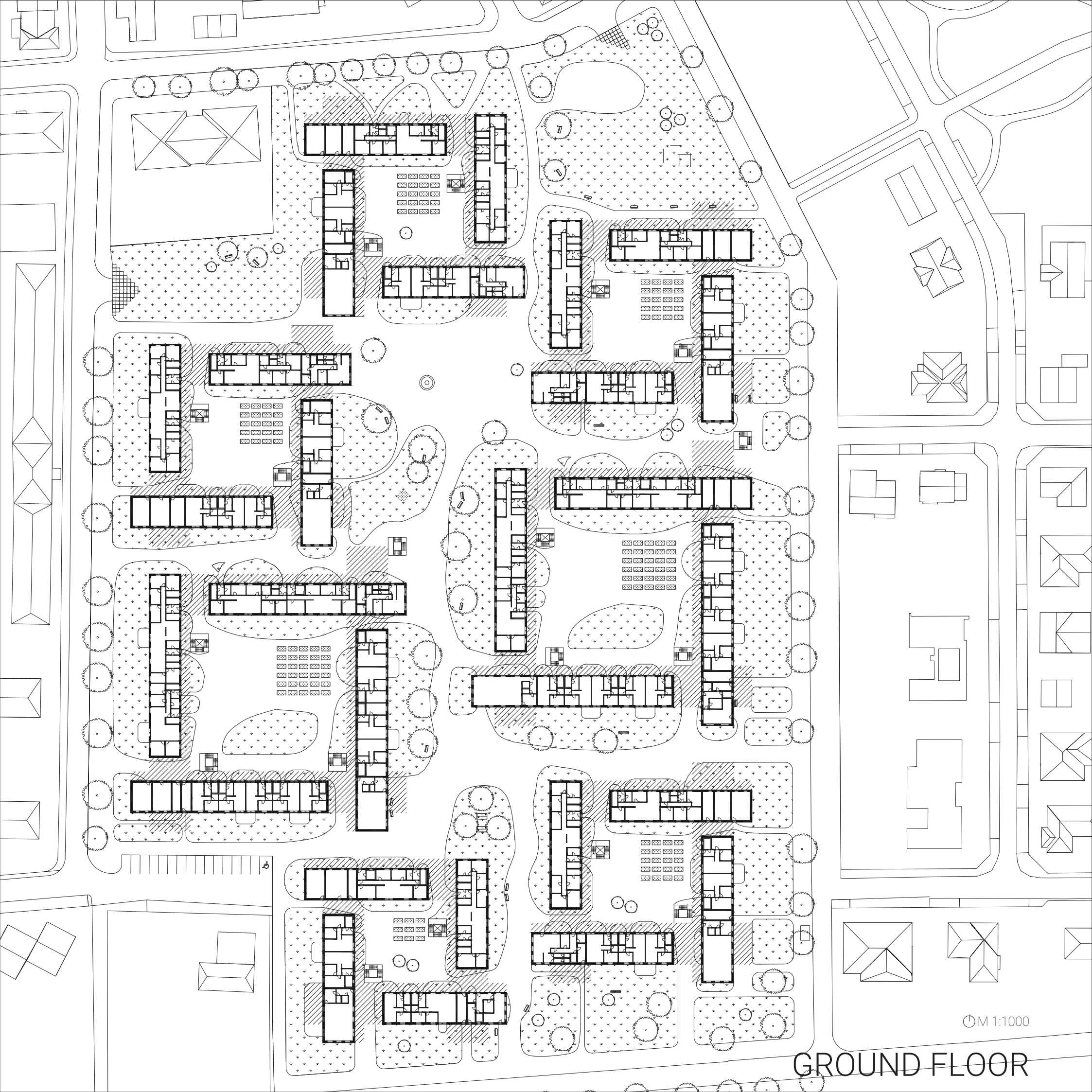
I myself witnessed this type of housing. Early morning getting up and a 40-minute drive to school and the subsequent return home with my mom, who finished at work. Yes, if I wanted to stay in town, I could. But there were two p. The bus ride took more than an hour. The second problem was that the last connection was at 10pm. So, even if I wanted to stay longer in the city on Friday night, it was problematic. The only luck was that I already had a social connection in the city - friends. It was worse for my younger sister, who, as a little girl, can't just be left alone in a town 40 kilometers away from home and we didn't know anyone in our small village. How could we? We lived in a family house, surrounded by a wire fence, and the only contact with the neighbors was either with the saleswoman in the store or with the postman. I didn't really know our neighbor's name. Like we lived on an island.

The surroundings of the area are specific in that it consists of a mix of socialist apartment buildings, houses built in the 70s-80s. years of the last century, but also the current unattractive family houses, accidentally scattered, as well as crumbs. There is also a school nearby, but the field is even closer. A field that is ready for more crumbs - bungalows. Walking distance to the town center is 15 minutes, which is the optimal distance. However, with the current trend of construction of detached houses, without any additional function, this distance will increase and may become that a pleasant walking distance becomes a car ride. It's time to sweep these crumbs. With my bold urban design, I want to create a whole that will provide privacy for its inhabitants, but on the other hand, it will not close itself from the surroundings, but rather welcomes the surroundings with open arms. It will provide a place of home, at the same time it will also create a place for business or relaxation. I create places where people can choose what they want to do.

As I wrote at the beginning, we live in layers. One day, these layers are bigger and more intertwined, the next day, they can be completely tiny. We share our lives with other people, some of whom we only meet for a few minutes on the bus, and some of them we spend half a day. We only create some layers with those closest to us, such as the home layer. But there are also layers that are made up of hundreds or thousands of people. For example, hockey team fans who met at the stadium. Obviously, not everyone knows each other, but they are still united by at least one thing that forms their layer in life. And that's right. These different interactions help us create communities. But we cannot just stay on a theoretical level. All these meetings (if we omit the Internet) need a physical place.

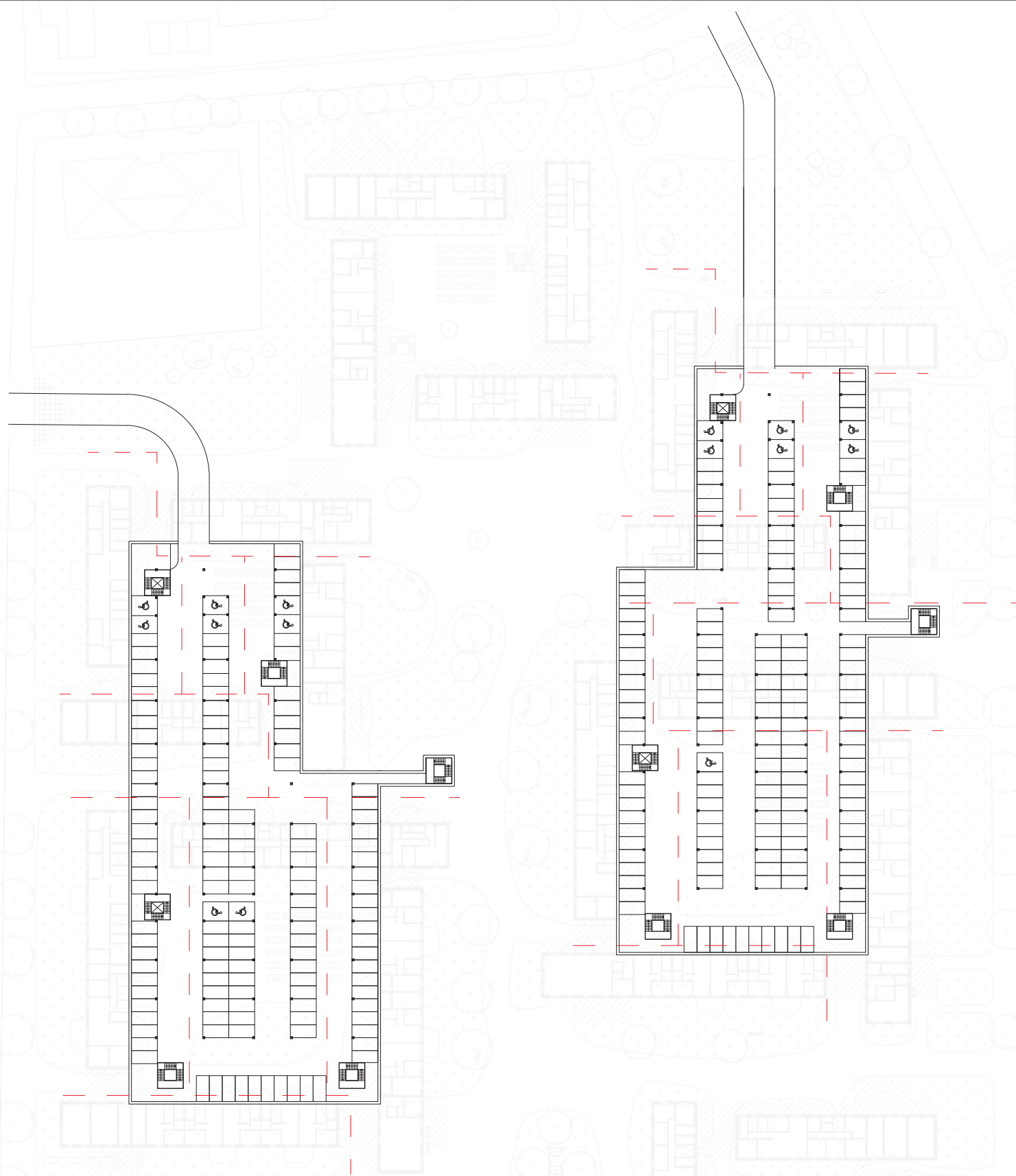
For this reason, in the project I dealt with the design of several types of spaces, with different dimensions, intimacy and purpose, because it is necessary to think about where a person lives their day.





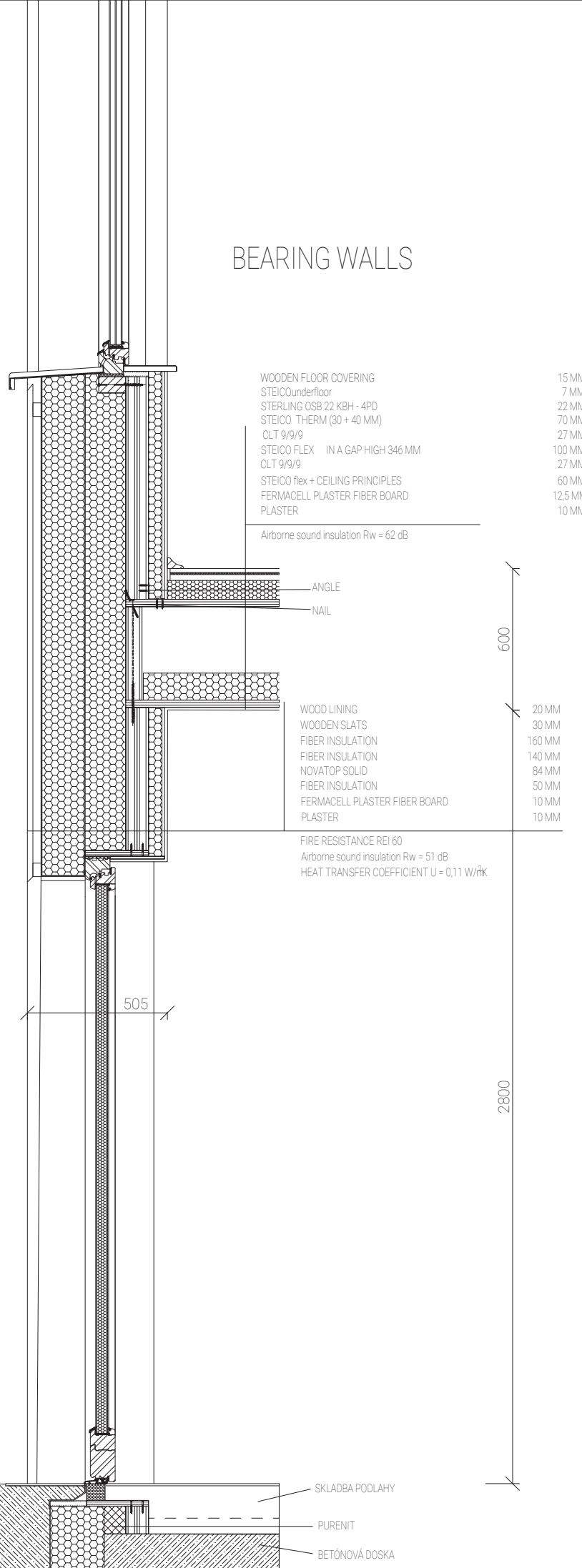
⊙ M 1:1000

GROUND FLOOR

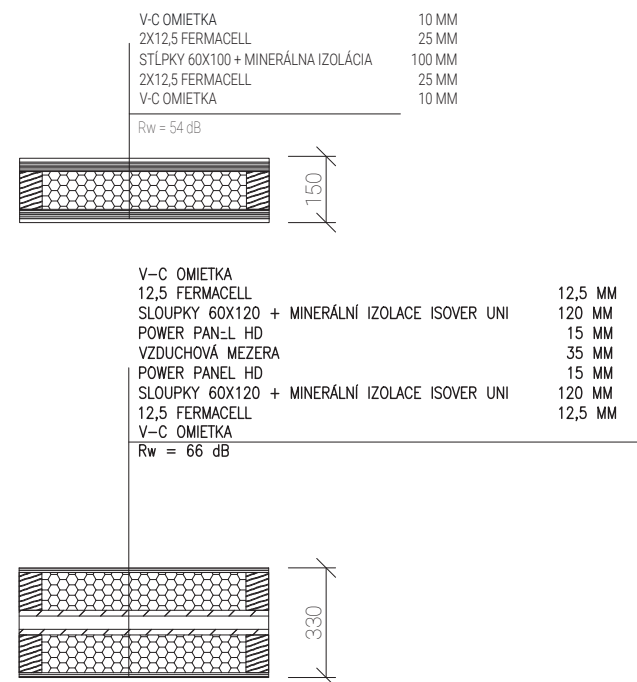


Parking is designed mainly as an underground garage under two pairs of buildings. These garages are accessible from the staircase from the inner blocks and a pair of steps outside the niche. The entrance to the garage is in the northern part of the territory. There are 293 parking spaces, which is sufficient for this area. Underground parking is complemented by 16 external parking spaces, which provide the possibility of short-term parking.

BEARING WALLS



INTERIOR WALLS



The buildings are designed as wooden buildings made of solid wood, specifically CLT panels, which are placed on a concrete slab 1500 mm deep. The construction of underground garages is made of reinforced concrete. Dilatation takes place between buildings, so it is not necessary to dilatate buildings. Perimeter load-bearing walls transfer the load to the ceiling and the entire construction system is provided by NOVATOP: The partitions are non-load-bearing. The roofing is designed as an extensive green roof in combination with a flat roof - terraces.

Energy generation for heating and hot water is provided by a trivalent energy source for pellets, solar energy and a heat pump. In each of the seven buildings there is a boiler room and a separate room for the storage of pellets. The solar panels, which are located on the roof on the fourth floor, are photothermal, as these panels have come out as a more efficient choice in a rough calculation. I

Due to fire safety, the windows on the porch are only tiltable with automatic closing when a fire is detected.

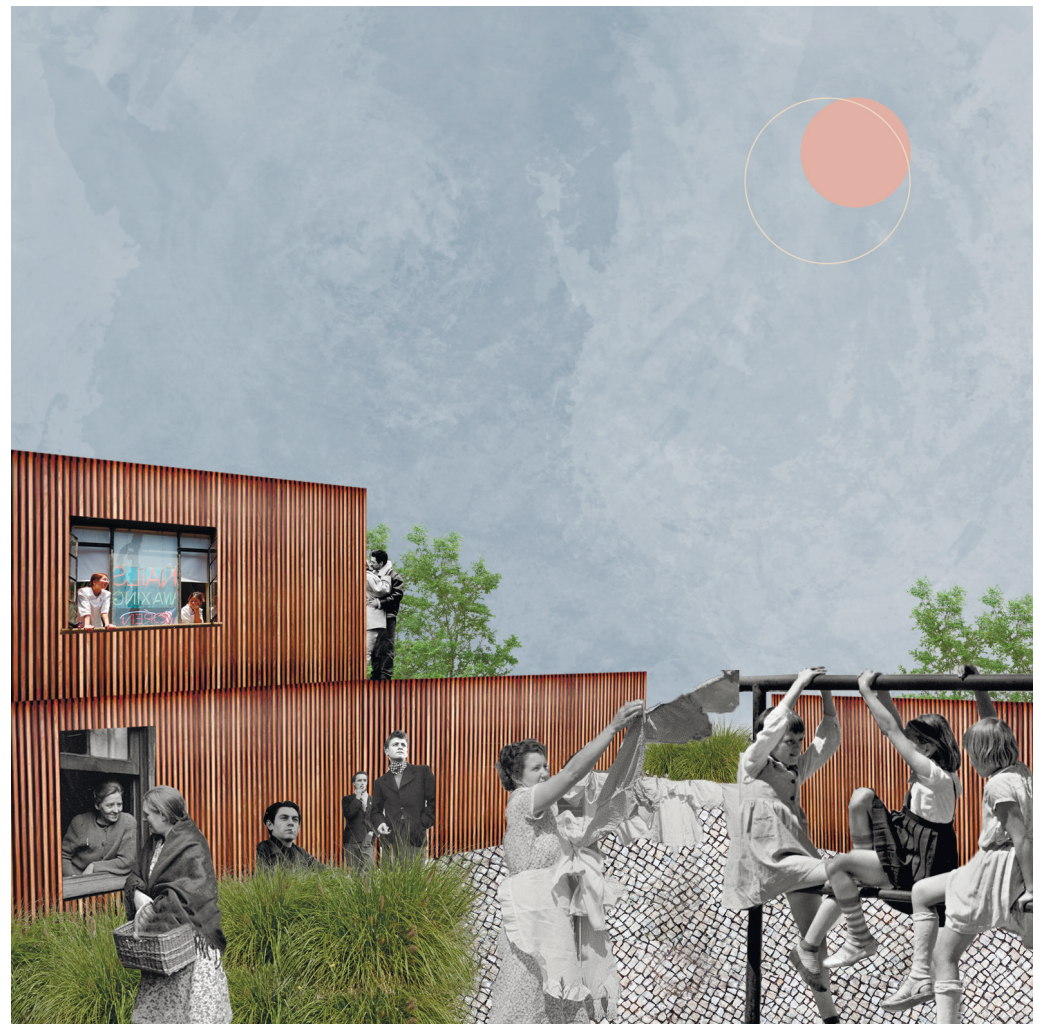


TOWN SQUARE

I created a public place where people go to "show off". It is not closed, on the contrary, it welcomes foreigners as well. Services such as cafes, pastry shops, so-called "samošky" etc. will find their place here. The paved area is complemented by greenery.

INTERSPACES

Secret nooks and crannies are known only to locals. If you want to smoke a cigarette with your friends, but the neighbours in the garden would not be happy about it, you can hide here. What exactly are these places?





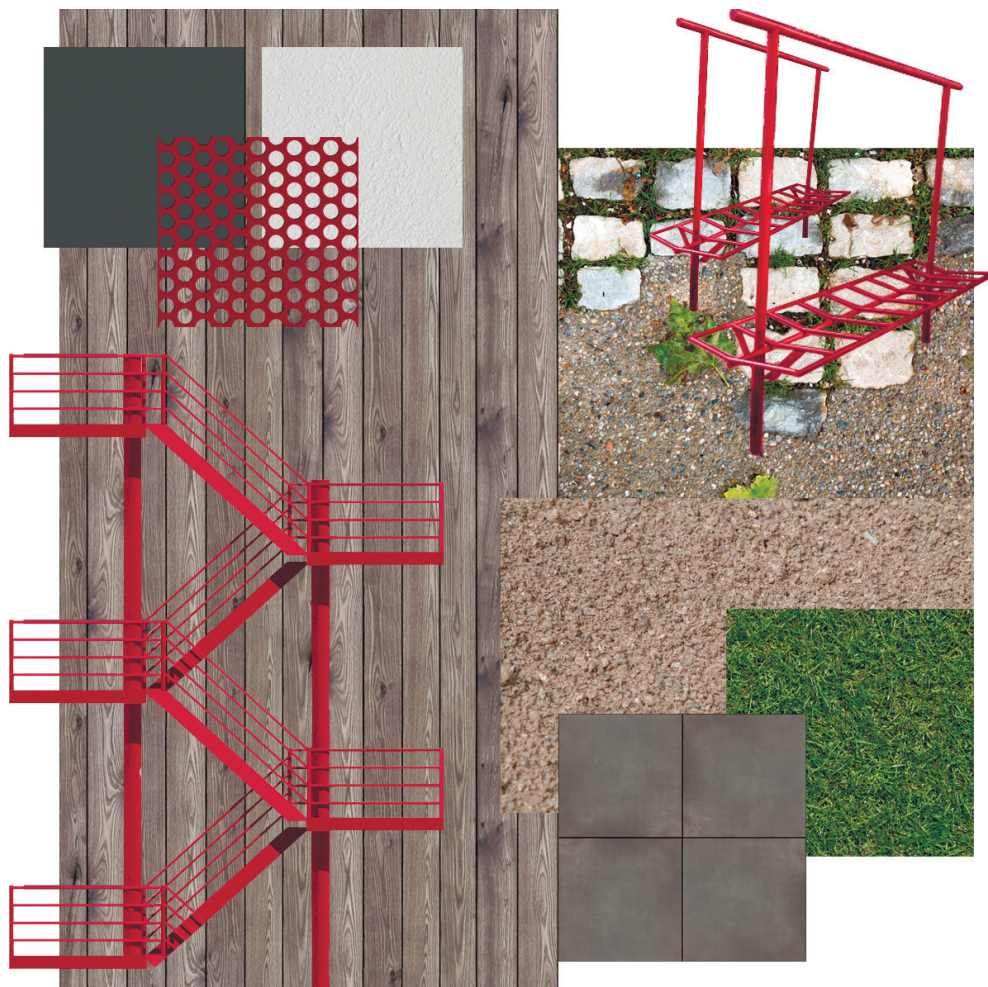
COURTYARD

Exterior space inside the building. The neighbours next door decided to have a barbecue and invited you to sit with them. You accept their invitation, but first, you want to help a neighbour who has trouble pulling beets out of the ground.

CO-LIVING APARTMENT

The word co-living means the coexistence of several people, who are usually unrelated in one household, where each of the families has its own separate private space, which is connected by one large common space.





EXTERIOR:

The materiality of the surfaces mostly reflects the type of building structure - wood. The wooden facade and cladding are made of spruce wood, which over time will turn slightly gray and it will become even more in contact with the surroundings. The wooden facade also refers to the construction of houses in the past in Polička. The gray-brown color is accompanied by white in the form of plaster, anthracite on windows, doors and fittings, and as a contrast to these colors is a color red, which is used on vertical communication - stairs and elevators, but also complementing the surroundings such as street lamps, benches and climbing frames. To achieve harmony, we must count on living green - trees, lawns, gardens, ...

INTERIOR:

The materiality of the interior should reflect the exterior. Therefore, it is recommended to use a similar range of colors and materials. Walls from CLT panels, wooden furniture, light plaster, anthracite-colored windows from the inside, many plants, but also, for example, the use of red perforated sheet metal, as a cladding for radiators.

