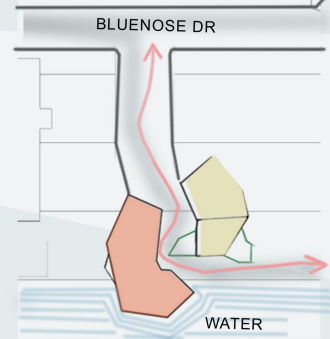
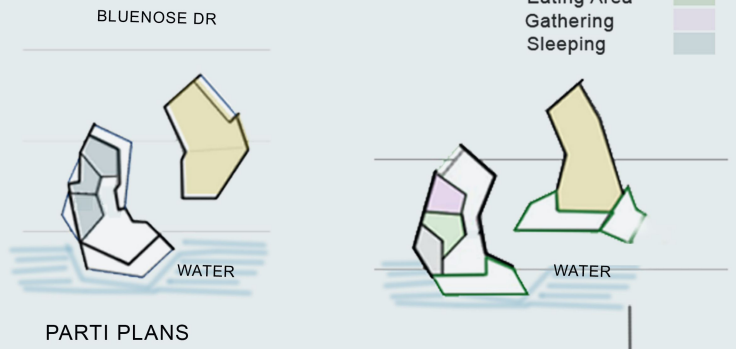


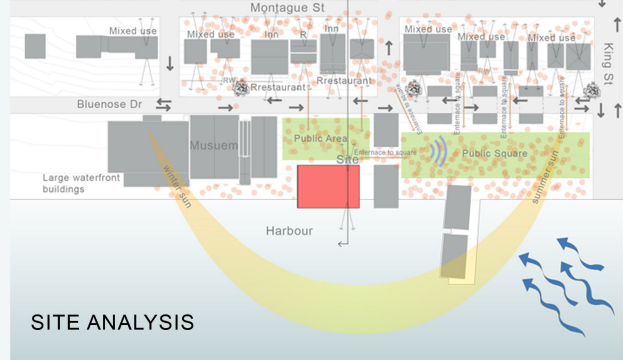
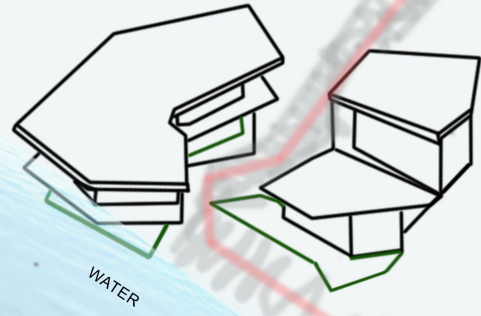
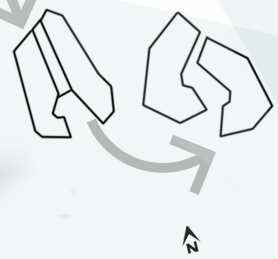
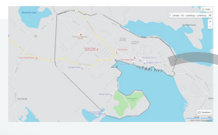
The Harbour Heart

The concept is inspired from the geographic form of Lunenburg map. The concept meant to bring the private building to be part of the water to give the inhabitants the feeling of being contained in the ocean spirit. The achieved form is meant to connect the waterfront to the city by having the main entrance on the city view and the back yard to be the water. Having the hearth between the public and private space which connects bluenose street to the water, making a smooth circulation and attraction point to the pedestrians. This pathway will produce pedestrian traffic to the business and will guide pedestrians to the new park developed on site. produce pedestrian traffic to the business.

- Public space
- Private space
- Outdoor space
- water
- Cooking area
- Eating Area
- Gathering
- Sleeping



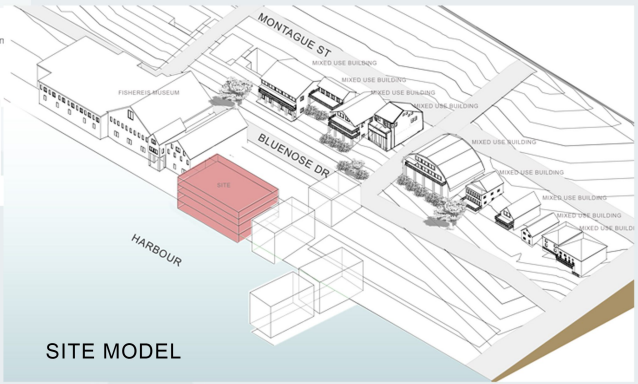
CONCEPT



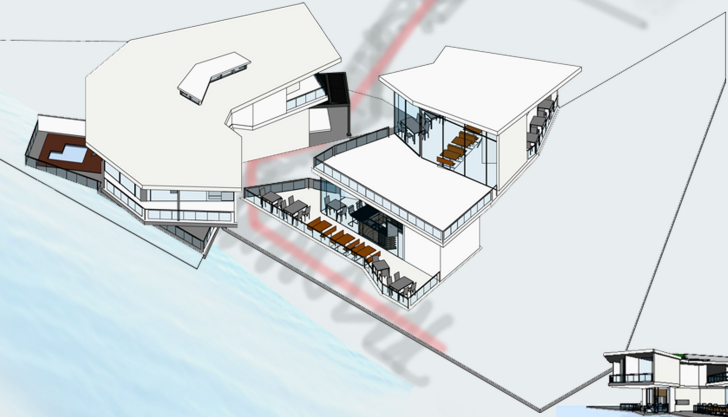
BUILDING MODEL CONCEPT



- Observation
- Most of the buildings on bluenose drive are not on the same setback line
 - All the buildings are perpendicular projected on the harbour front
 - All the buildings are mixed use to serve the hospitality on the harbour's new public square
 - All the buildings on bluenose drive have multie entrances and two elevations : rear and front



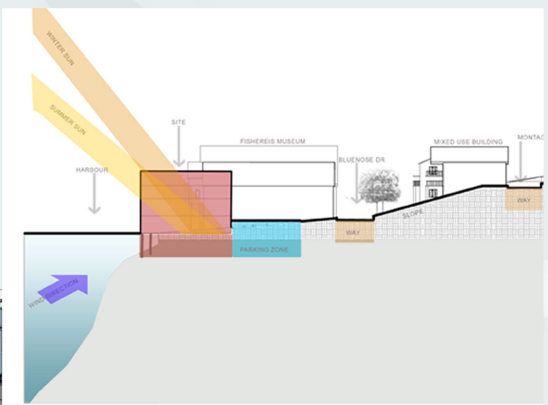
3D VIEW



3D VIEW



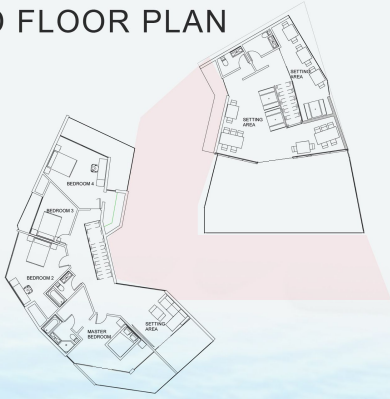
SITE SECTION



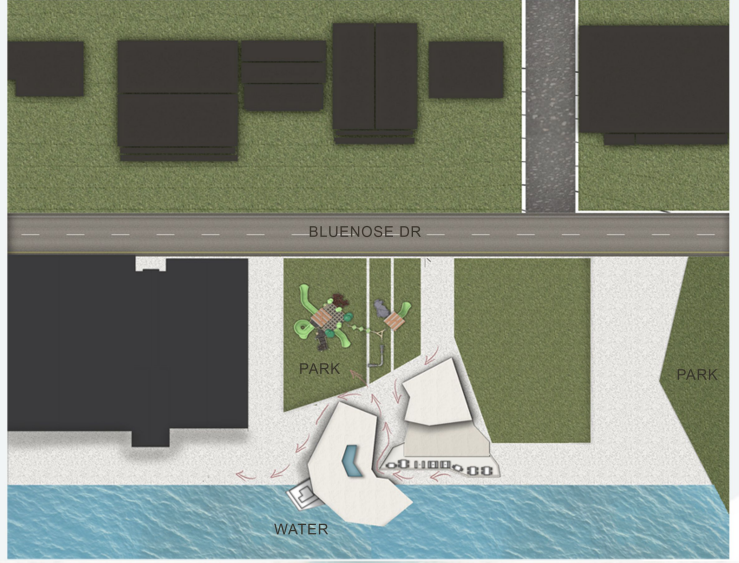
3D VIEW



SECOND FLOOR PLAN



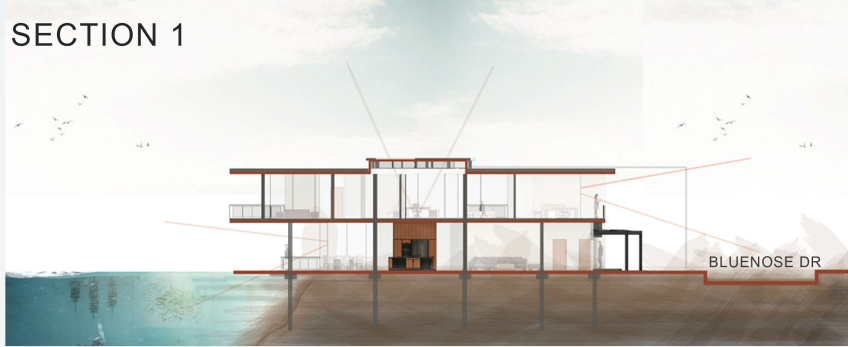
SITE



GROUND FLOOR PLAN



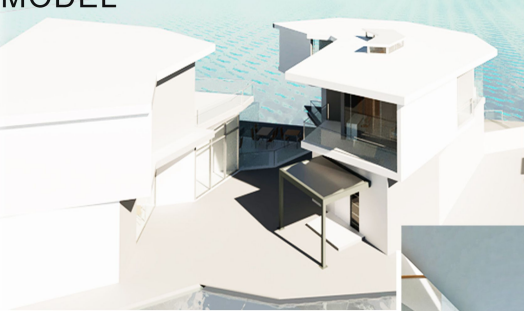
SECTION 1



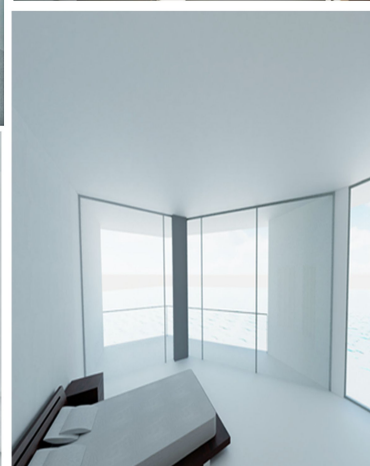
SECTION 2



MODEL

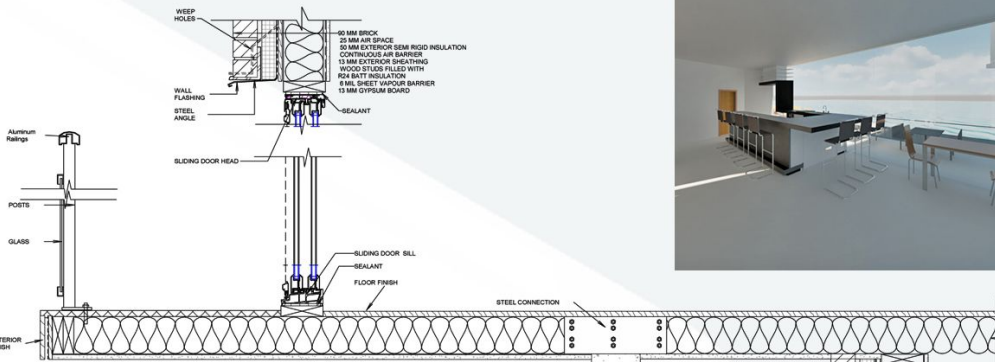


3D VIEWS

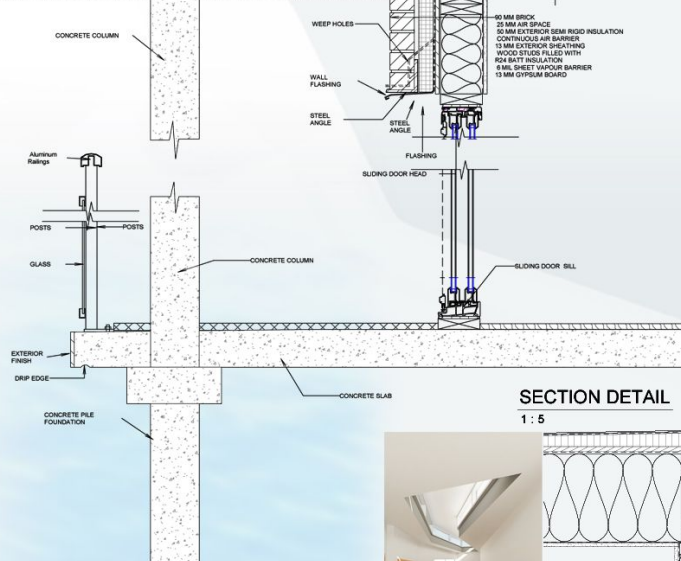
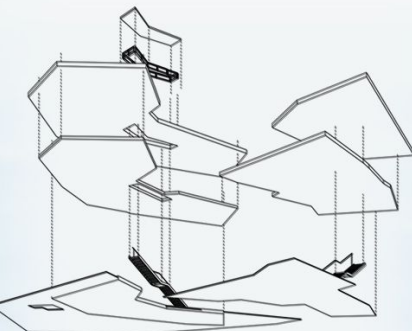


CRITICAL CONDITIONS

MATERIAL



BUILDING LAYERS DIAGRAM



SECTION DETAIL

1:5

