

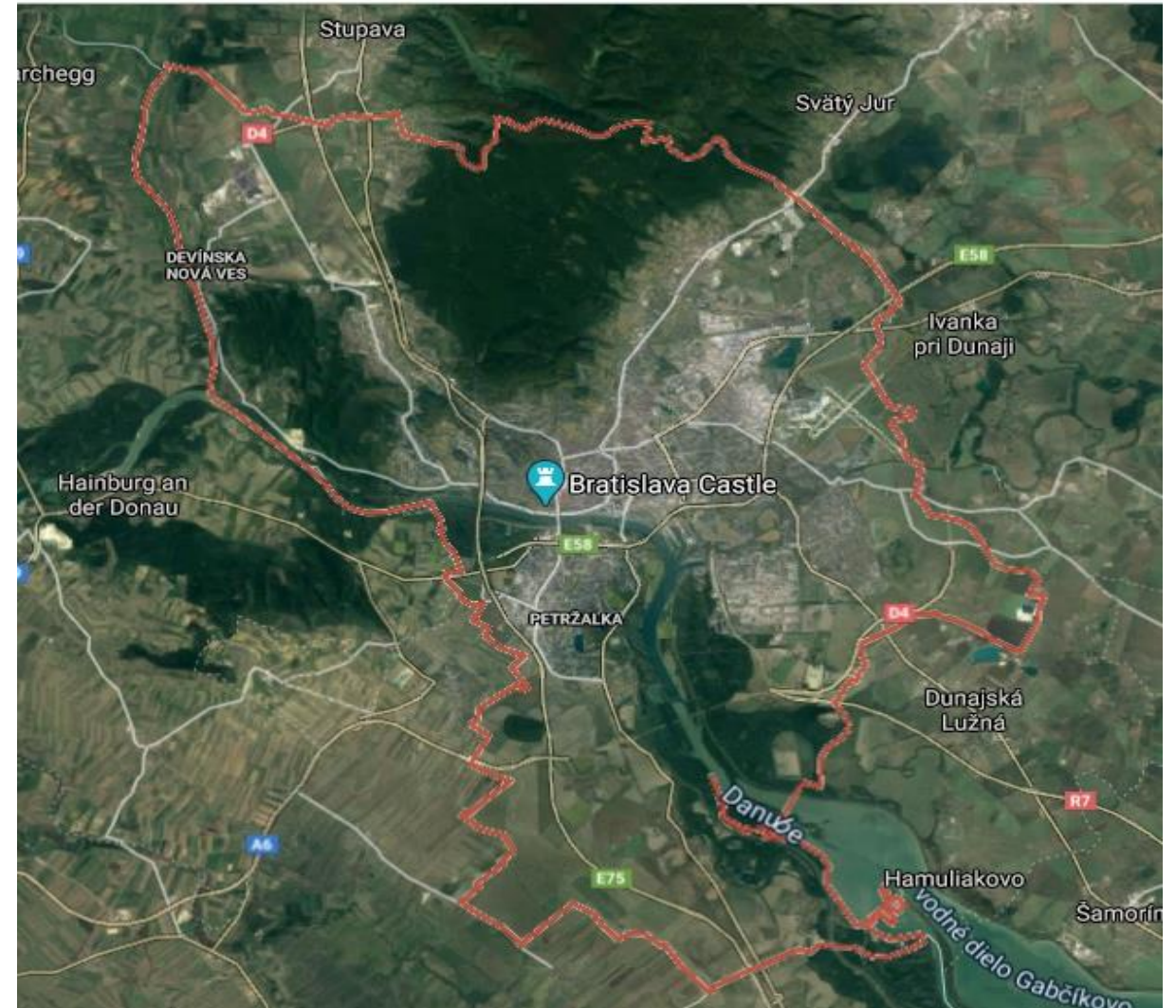
STU Campus



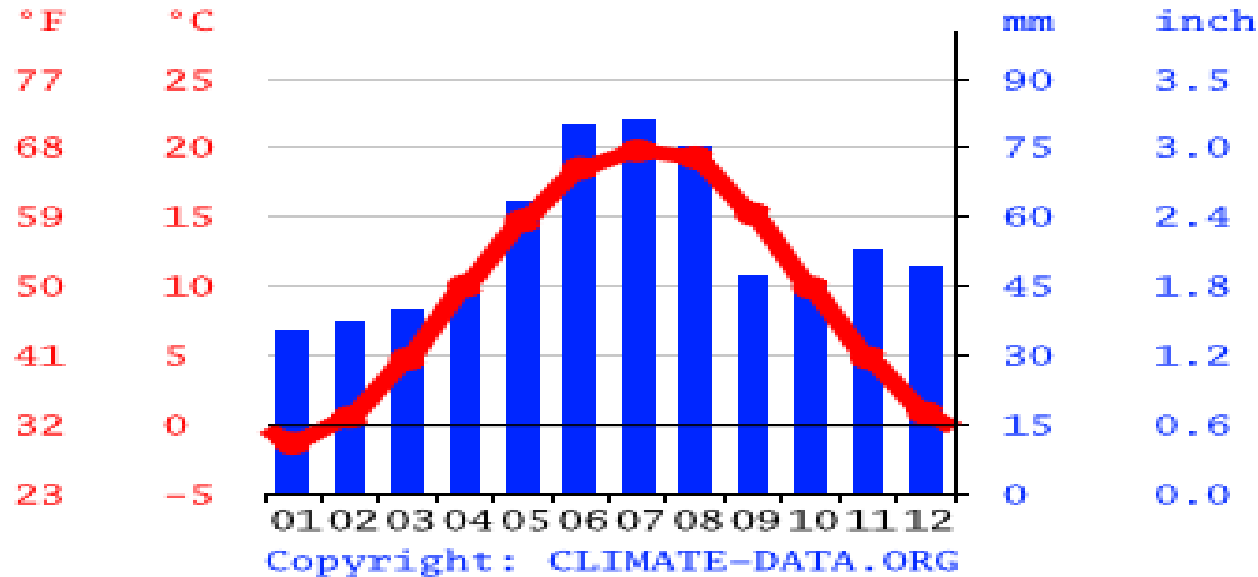
Bratislava, Slovakia



- Capital and largest city of Slovakia
- 430 000 inhabitants
- Located in southwestern Slovakia, it occupies both banks of the Danube River and the left bank of the Morava River.



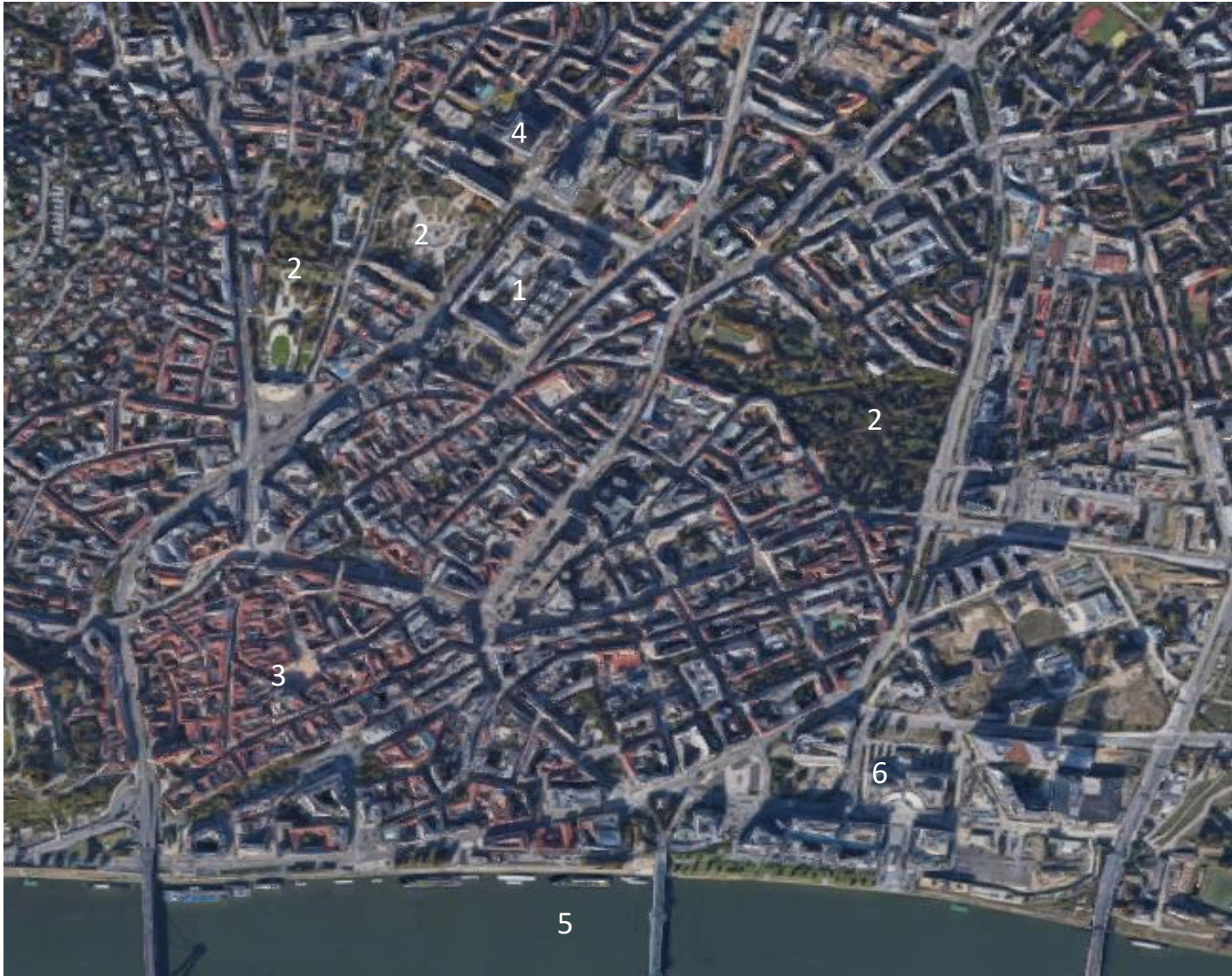
Climate



Month	Jan	Feb	Mar	Apr	May	Jun	Jul	Aug	Sep	Oct	Nov	Dec	Year
Record high °C (°F)	19.8 (67.6)	19.1 (66.4)	25.0 (77.0)	30.3 (86.5)	33.4 (92.1)	36.3 (97.3)	38.2 (100.8)	39.3 (102.7)	34.0 (93.2)	30.0 (86.0)	21.3 (70.3)	17.9 (64.2)	39.3 (102.7)
Average high °C (°F)	2.7 (36.9)	5.1 (41.2)	10.3 (50.5)	16.7 (62.1)	21.8 (71.2)	24.9 (76.8)	27.5 (81.5)	27.0 (80.6)	21.7 (71.1)	15.6 (60.1)	8.2 (46.8)	3.3 (37.9)	15.4 (59.7)
Daily mean °C (°F)	-0.4 (31.3)	1.2 (34.2)	5.5 (41.9)	11.0 (51.8)	16.0 (60.8)	19.1 (66.4)	21.3 (70.3)	20.7 (69.3)	15.9 (60.6)	10.4 (50.7)	4.9 (40.8)	0.7 (33.3)	10.5 (50.9)
Average low °C (°F)	-3.4 (25.9)	-2.3 (27.9)	1.3 (34.3)	5.4 (41.7)	10.2 (50.4)	13.4 (56.1)	15.4 (59.7)	15.0 (59.0)	11.0 (51.8)	6.1 (43.0)	1.8 (35.2)	-1.9 (28.6)	6.0 (42.8)
Record low °C (°F)	-24.6 (-12.3)	-20 (-4)	-15.1 (4.8)	-4.4 (24.1)	-2 (28)	3.0 (37.4)	7.0 (44.6)	5.0 (41.0)	-2.0 (28.4)	-8 (18)	-12 (10)	-20 (-4)	-24.6 (-12.3)
Average precipitation mm (inches)	39 (1.5)	37 (1.5)	38 (1.5)	34 (1.3)	55 (2.2)	57 (2.2)	53 (2.1)	59 (2.3)	55 (2.2)	38 (1.5)	54 (2.1)	46 (1.8)	565 (22.2)
Average relative humidity (%)	83	78	71	64	67	66	64	65	73	78	83	85	73
Mean monthly sunshine hours	65.1	81.9	151.9	204.0	263.5	270.0	275.9	269.7	207.0	142.6	60.0	46.5	2,038.1
Average ultraviolet index	1	2	3	4	6	7	7	6	4	3	1	1	4

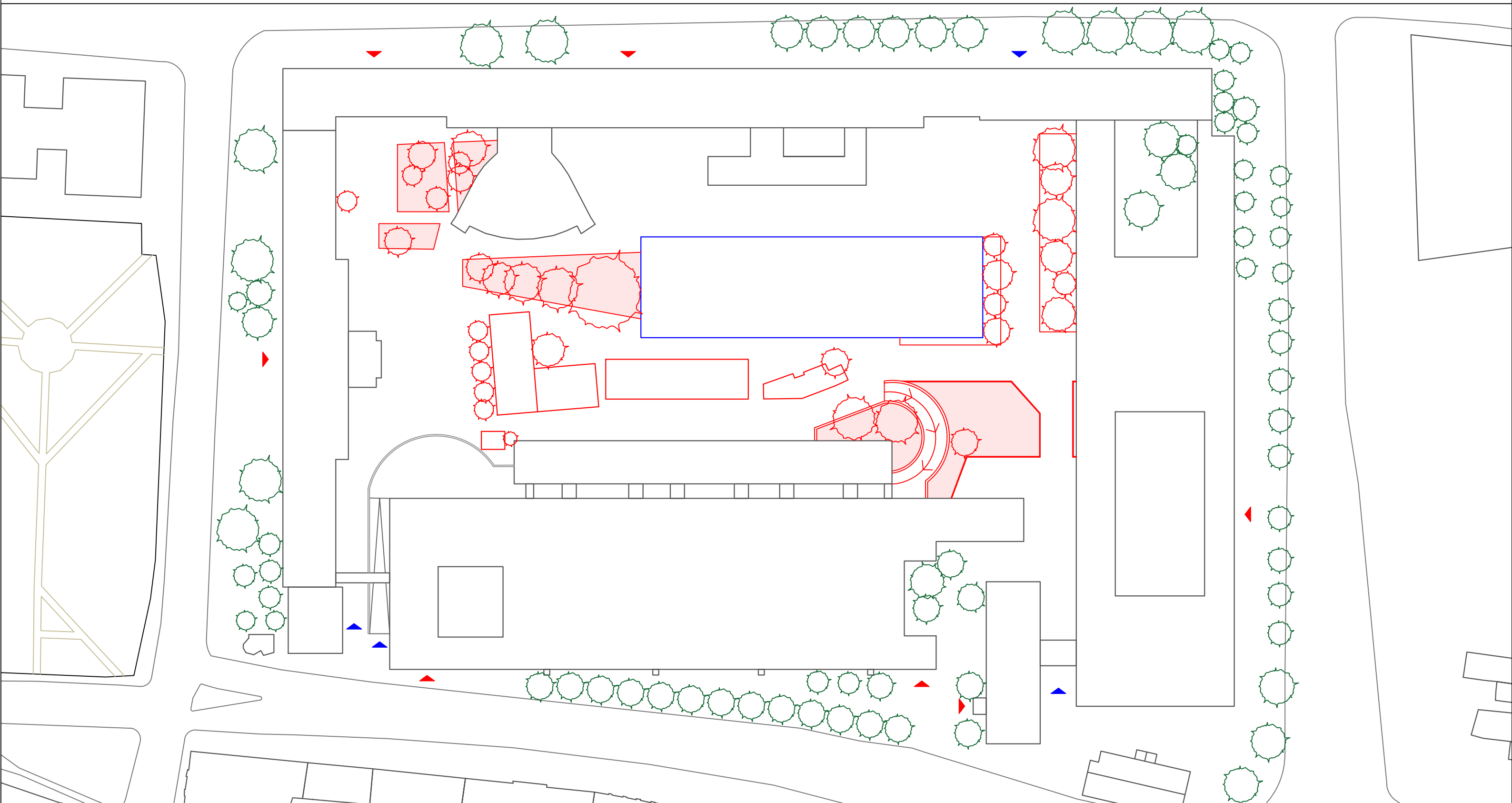
- Bratislava lies in the northern temperate zone and has a temperate continental climate with an average annual temperature of about 10.5 ° C, an average temperature of 21 ° C in the warmest month and -1 ° C in the coldest month, four different seasons and precipitation spread fairly evenly in throughout the year.

Surrounding Monuments



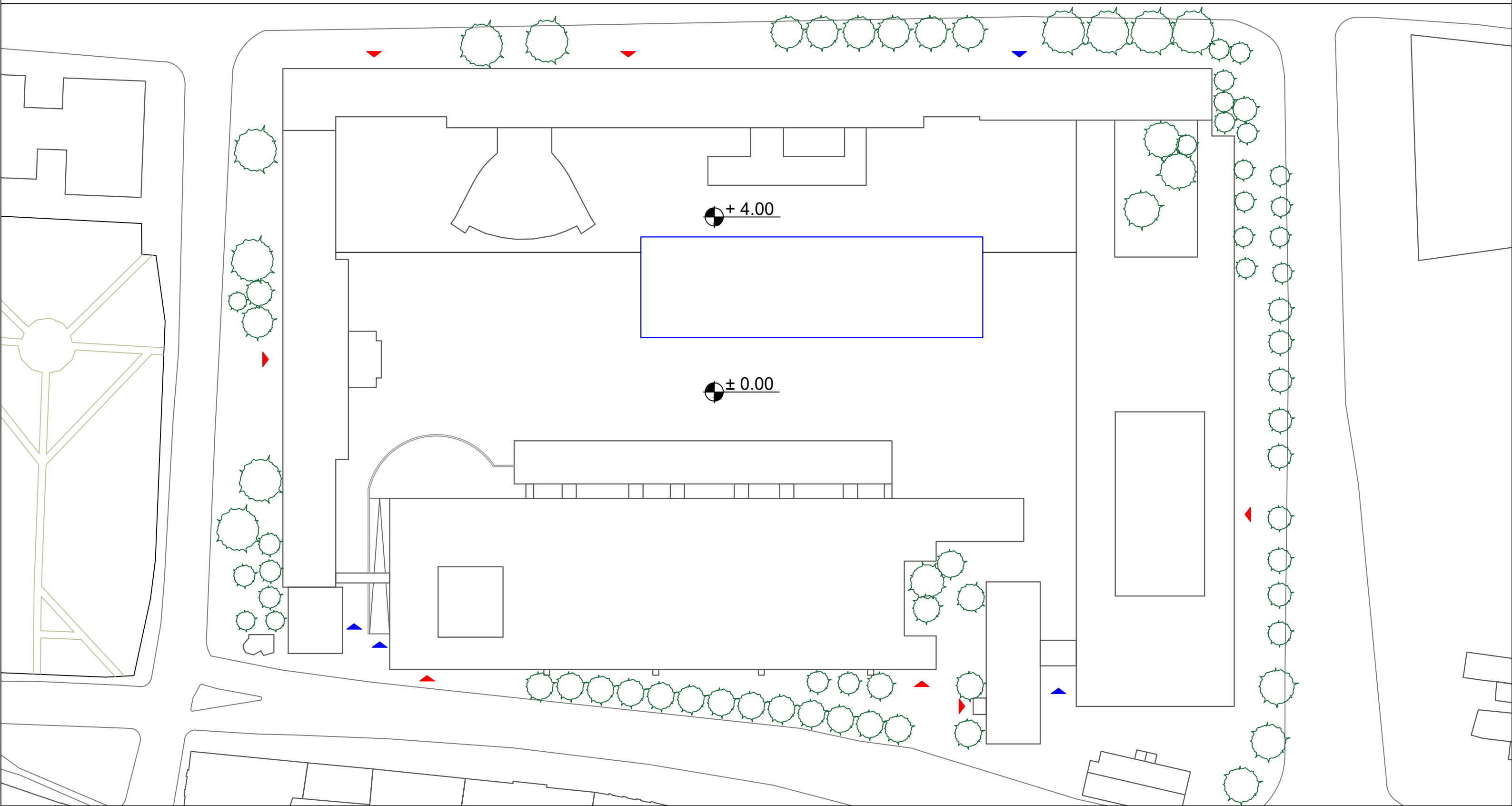
- 1 – STU campus location
- 2 – Parks
- 3 – Old Town Hall
- 4 – Slovak radio station building
- 5 – Danube River
- 6 – Slovak Philharmonic

Current Situation



- Demolished objects
- Re-Constructed Building

Elevation of the ground



Concept

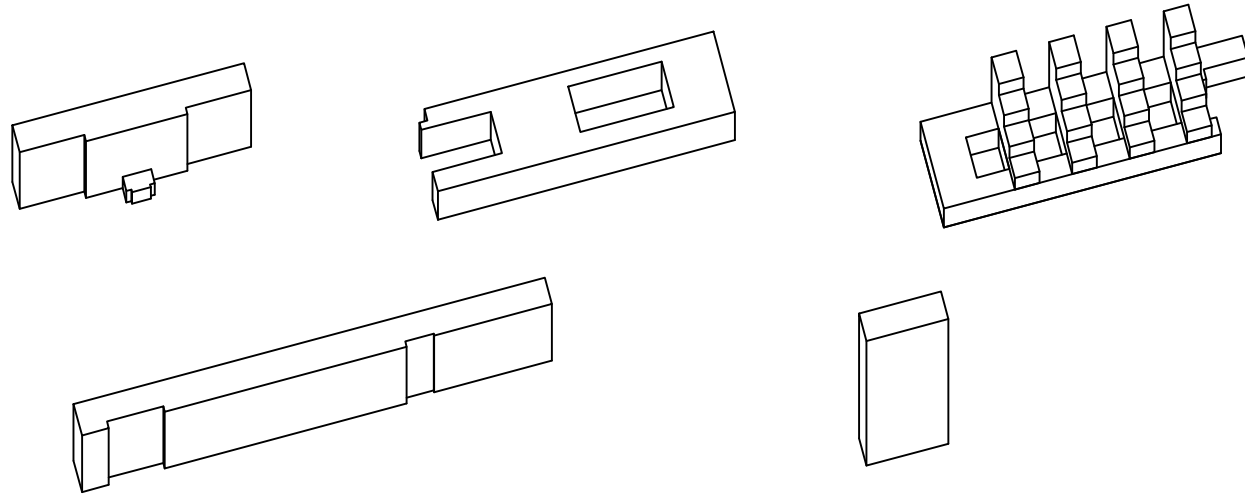
**Student Architectural competition for a conceptual design of the
STU campus solution in Bratislava, Slovakia
" Recycle and Re-use "**

Through the analysis of the current situation, public spaces and various college campuses also known as the second home and that learning does not occur in a particular area. Public spaces are used for interaction and relaxation between people and so all spaces should be able to support different types of learning and these public spaces mixed with the new research centre can help enhance these interactions.

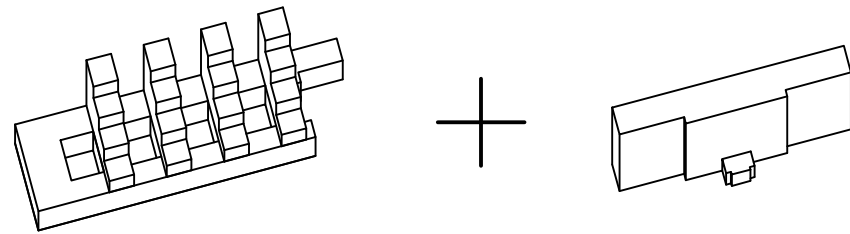
So the concept derives from the need for green spaces, public spaces and a research centre. With the topography of the plot being with different heights, these heights are separated by the research centre with the north elevation providing more intimate public spaces and also the entrance to the administration while the south elevation is where public spaces are mixed with various uses and providing the main entrance to the research centre.

Composition of new building

Analysis of Surrounding buildings

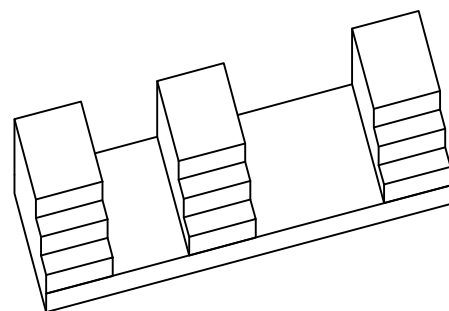


New Building

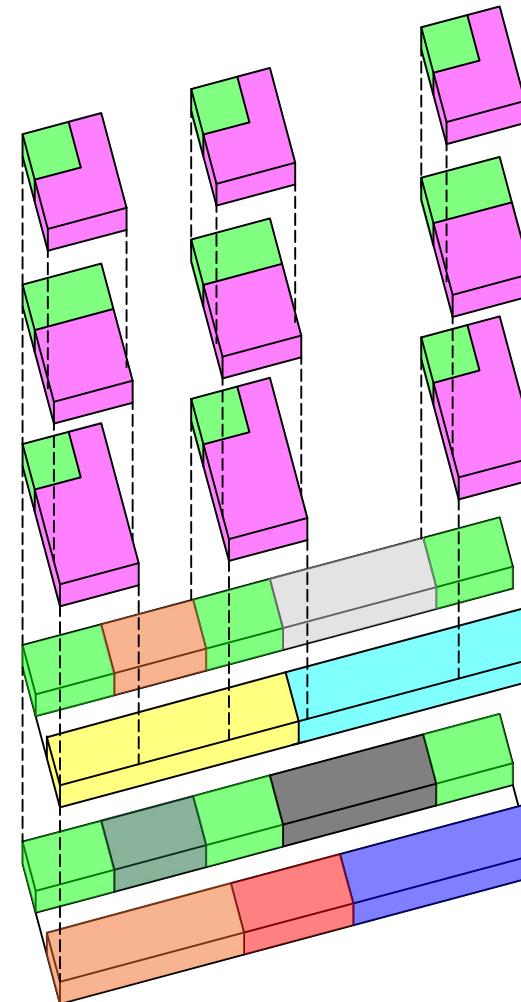


+

=

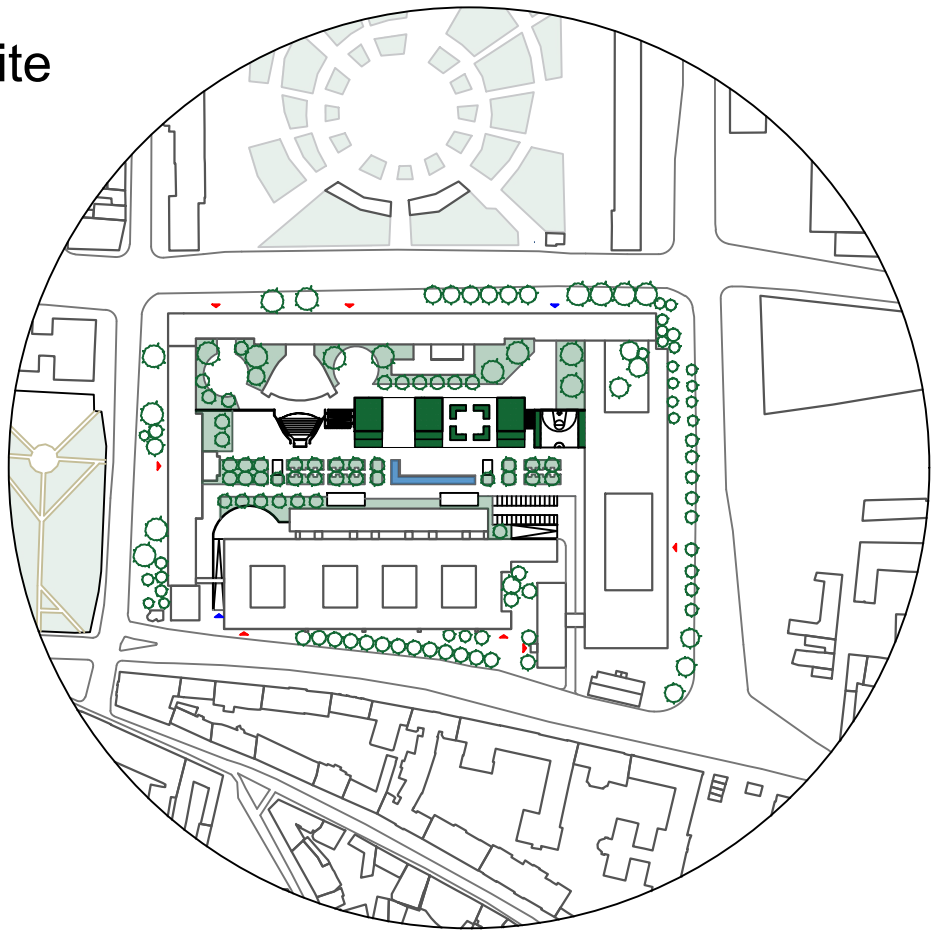


Floor division

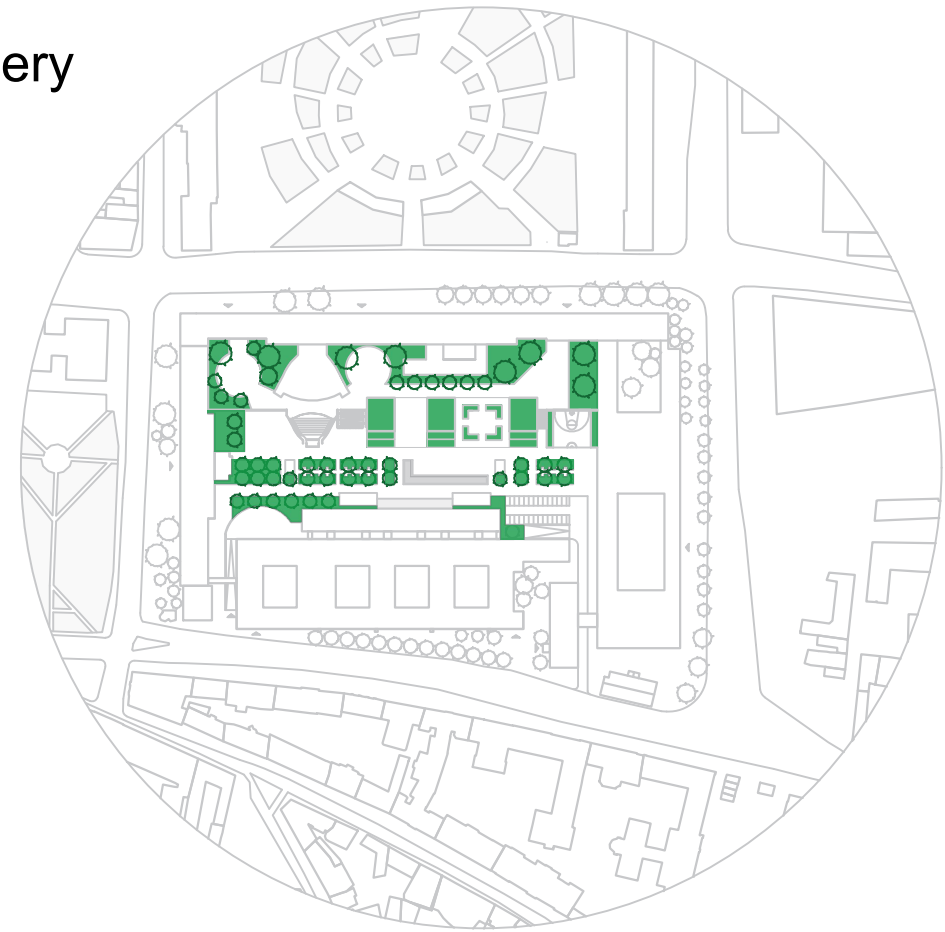


- Innovative interdisciplinary research center STU, startup center, cooperation with practice
- Administrative offices of the Rectorate in connection to research
- Presentation (experiential) center of science and research.
- Social, exhibition and multipurpose spaces
- Media library, study rooms
- Catering, restaurants, cafes
- Communication and Toilets
- Technical background
- Info services, entrance area
- Workshops

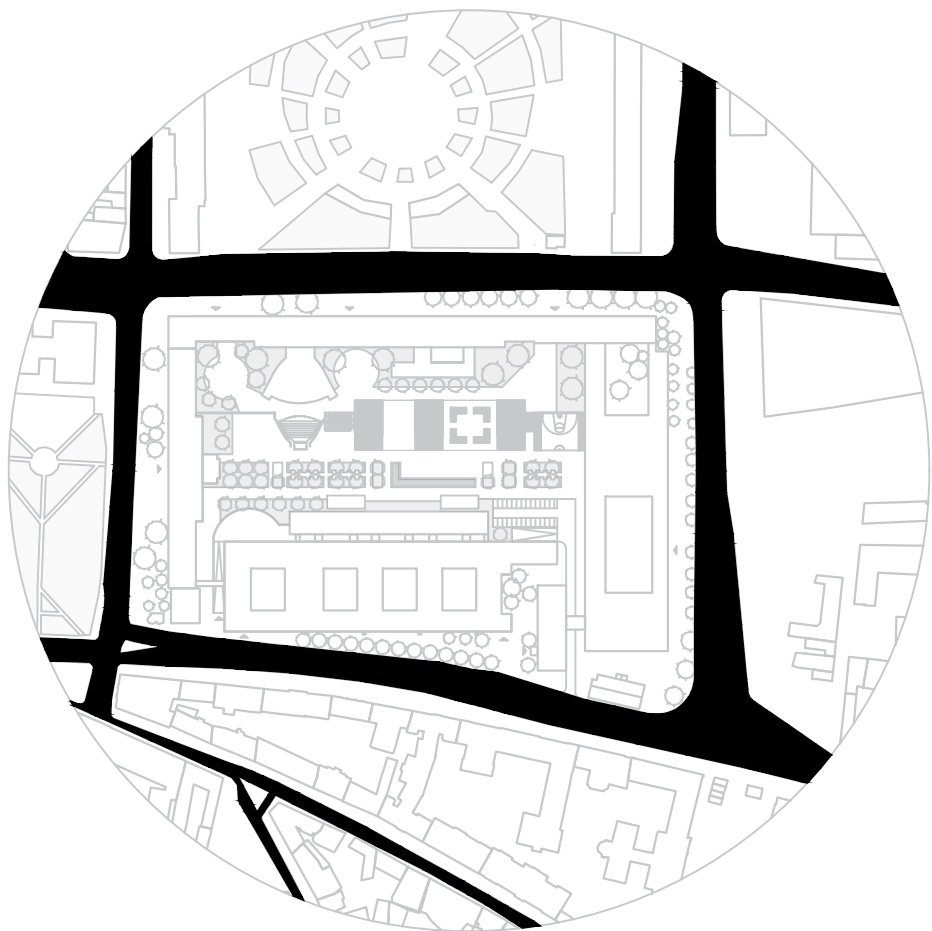
New Site



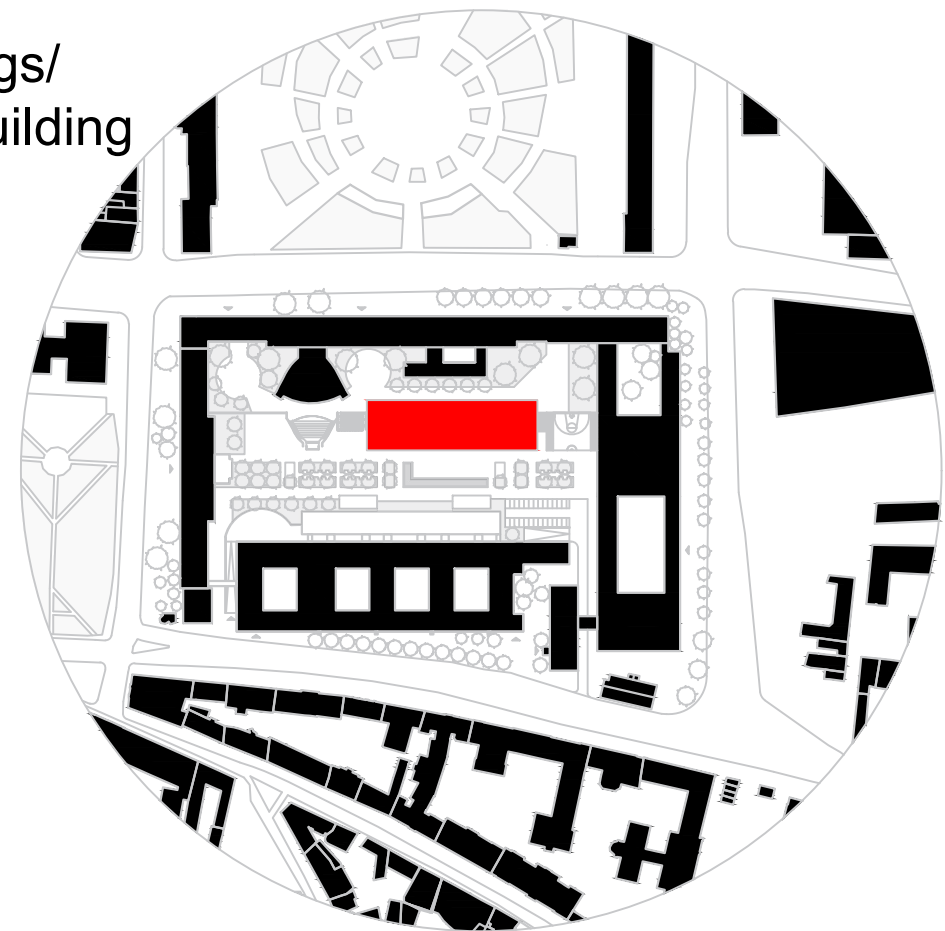
Greenery

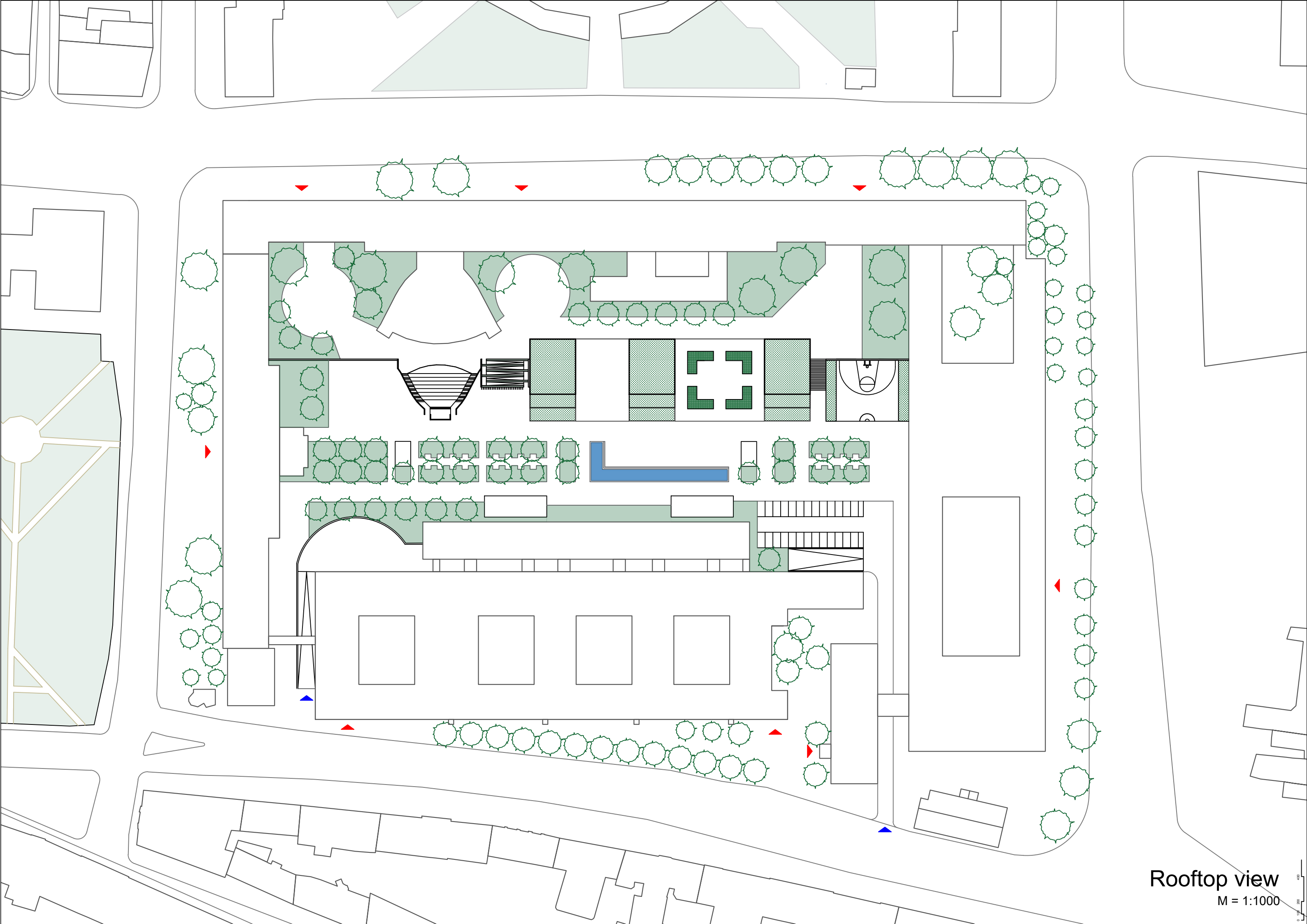


Roads



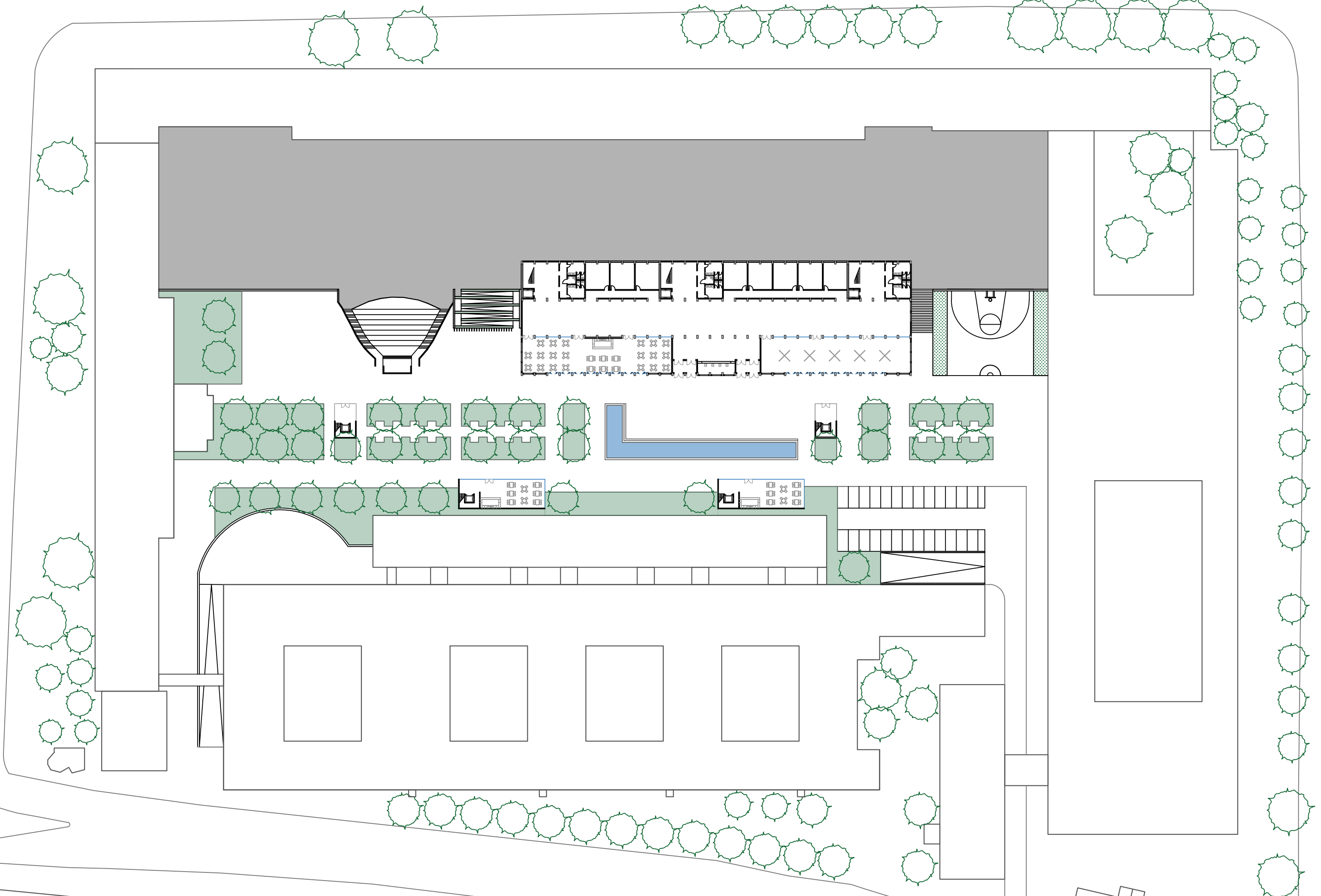
Buildings/
New building





Rooftop view

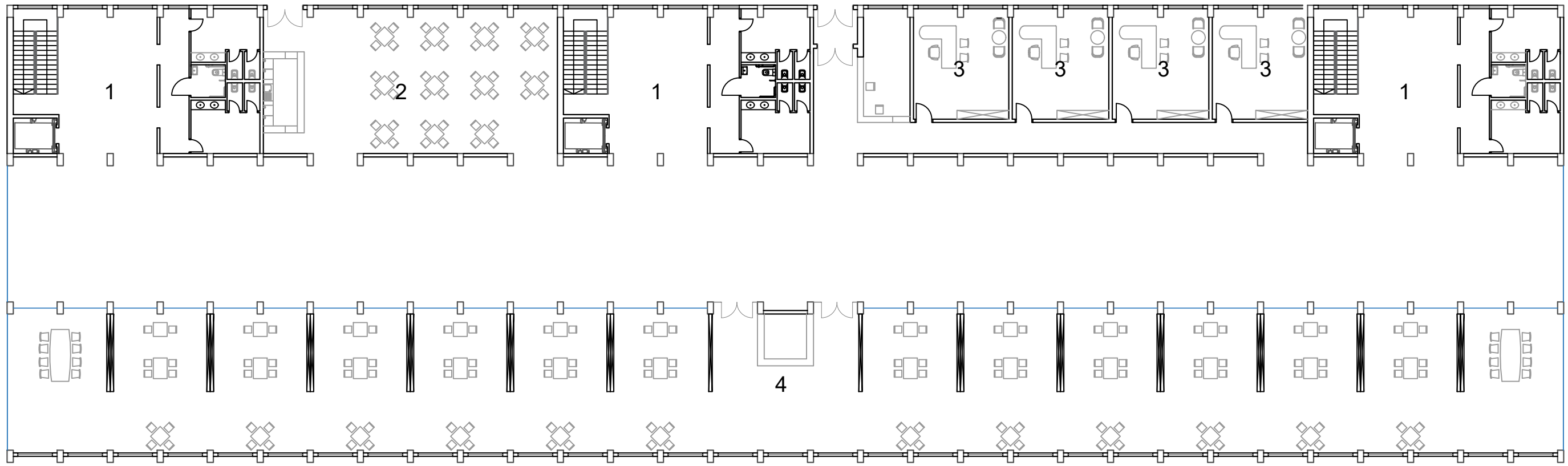
M = 1:1000



Ground Floor ±0.00

M=1:750

0 100 200 400

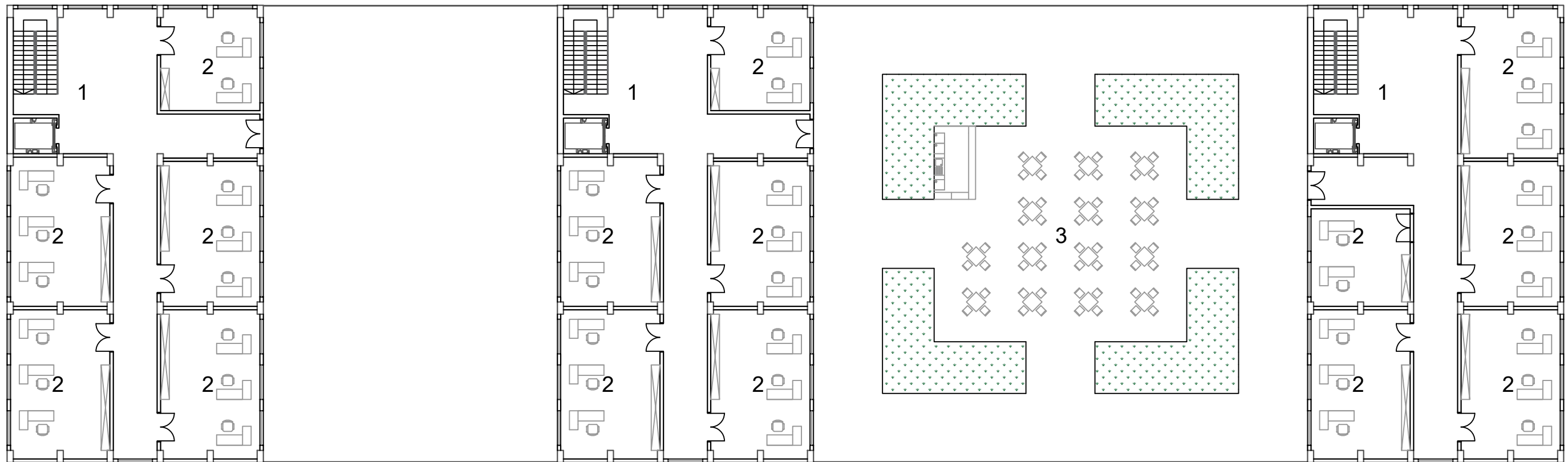


First Floor +4.00

M = 1:250

1 - Communication and Toilets
3 - Office

2 - Cafeteria
4 - Media library, study rooms/Social, exhibition and multipurpose spaces



Second Floor +8.00

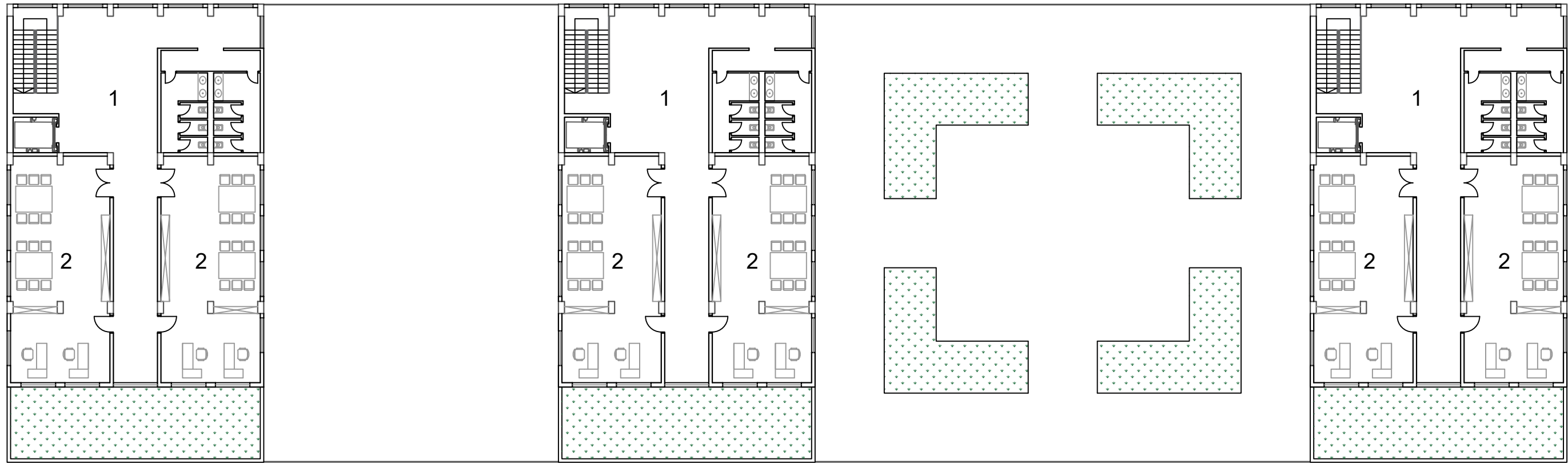
M = 1:250

1 - Communication

2 - Laboratories

3 - Outside Cafeteria

0 100 200 400

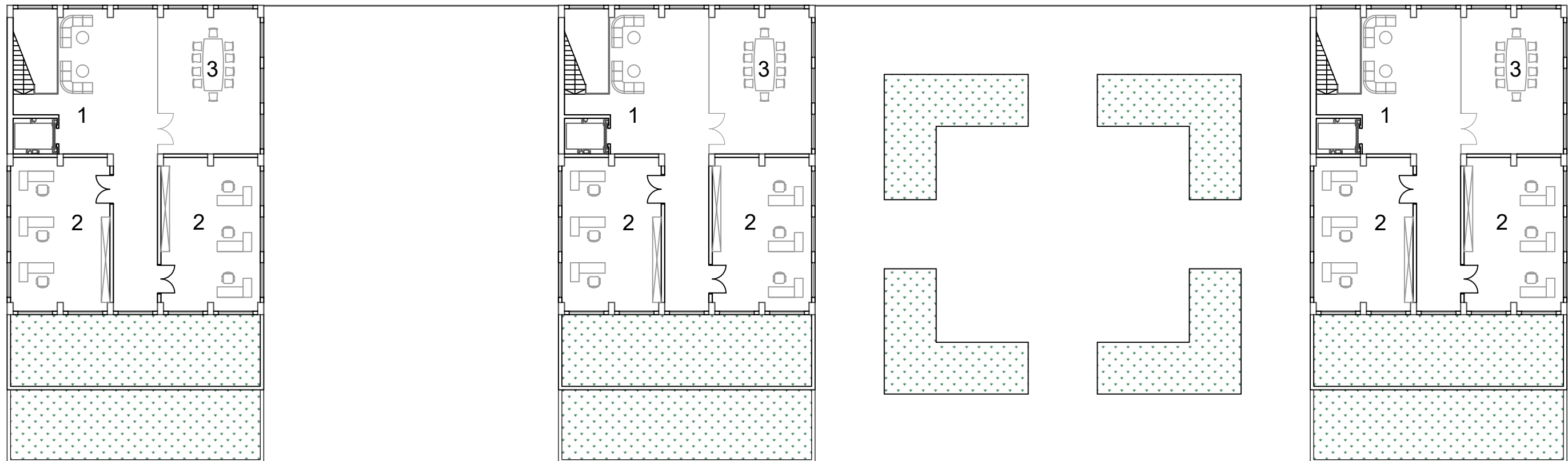


Third Floor +12.00

M = 1:250

1 - Communication and Toilets

2 - Laboratories



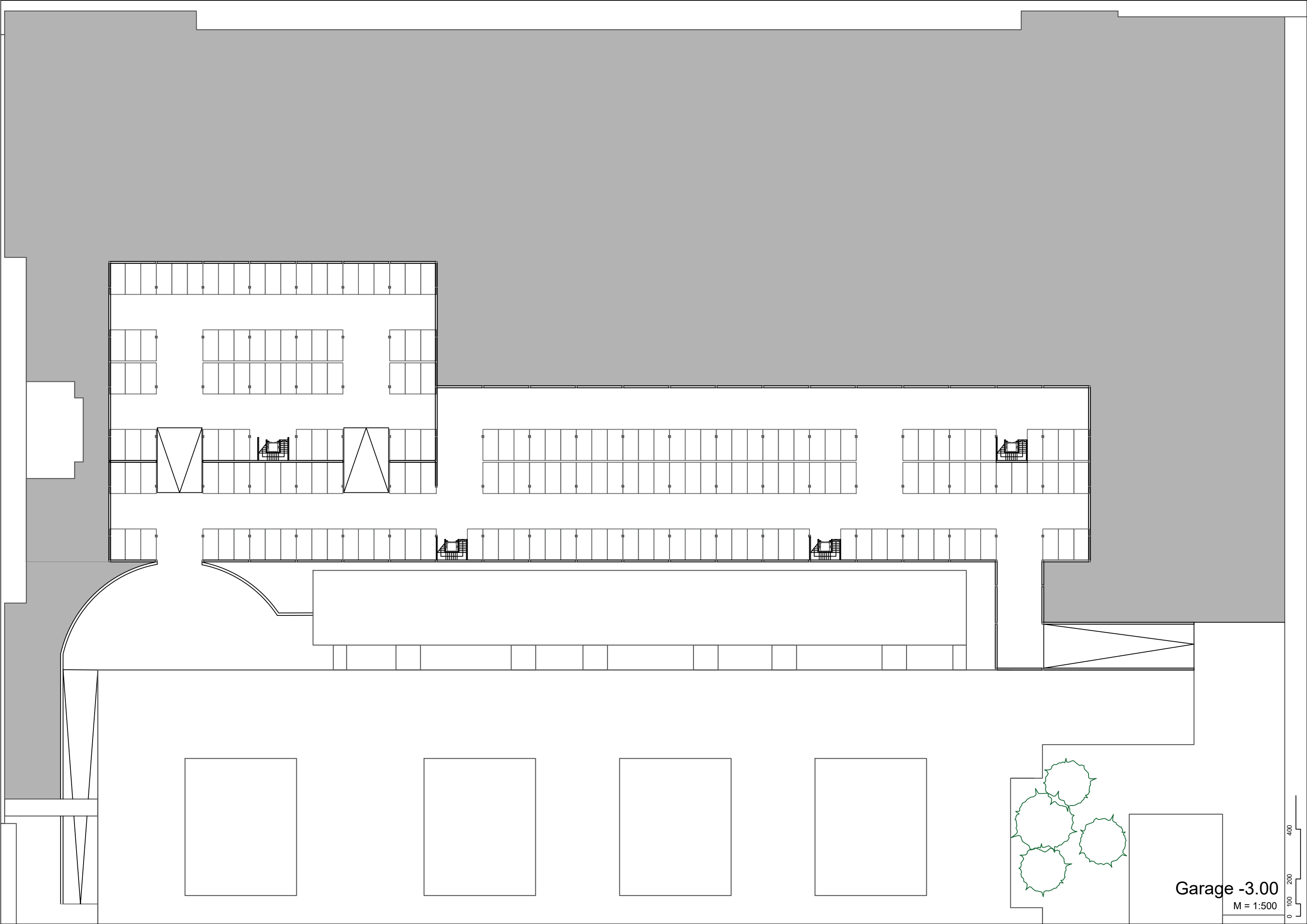
Fourth Floor +16.00

M = 1:250

1 - Communication

2 - Laboratories

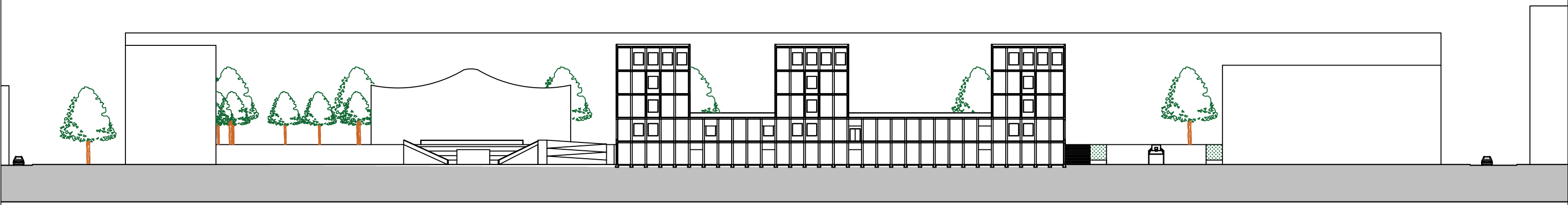
3 - Meeting Room/Multi Purpose Room



Garage -3.00

M = 1:500

0 100 200 400

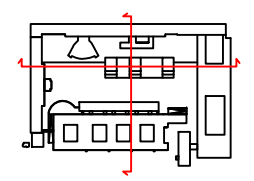


Section 1-1

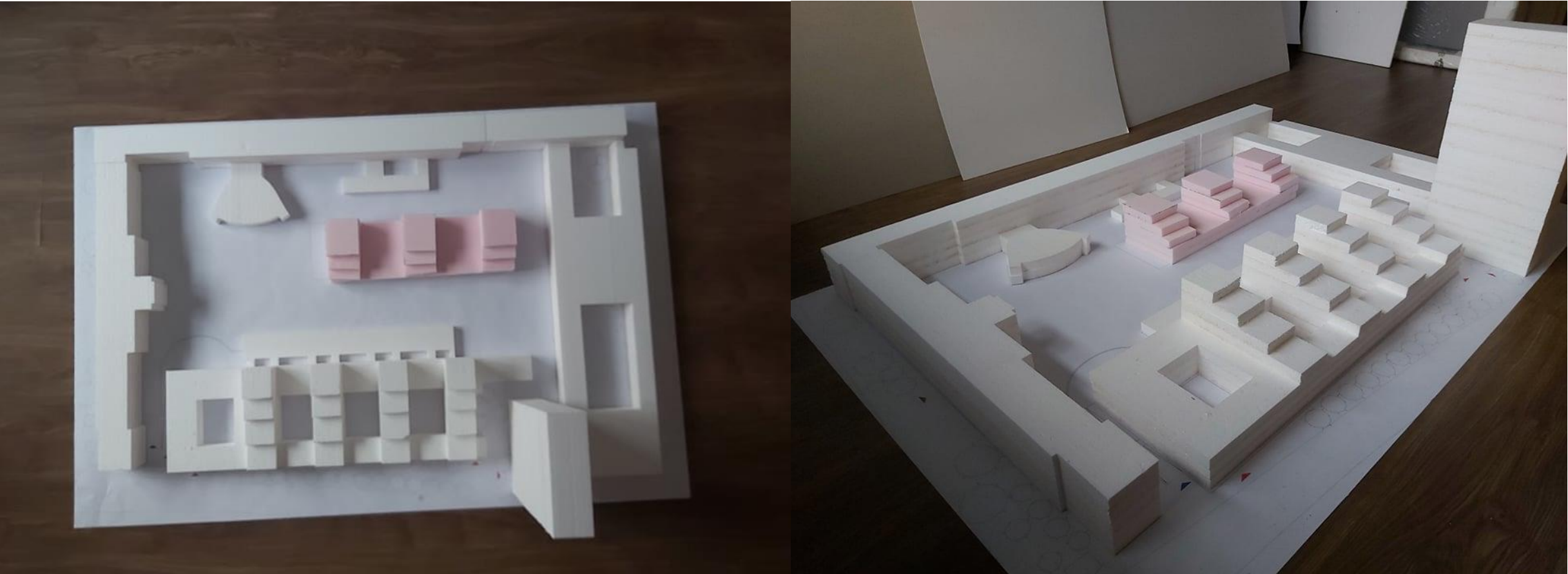


Section 2-2

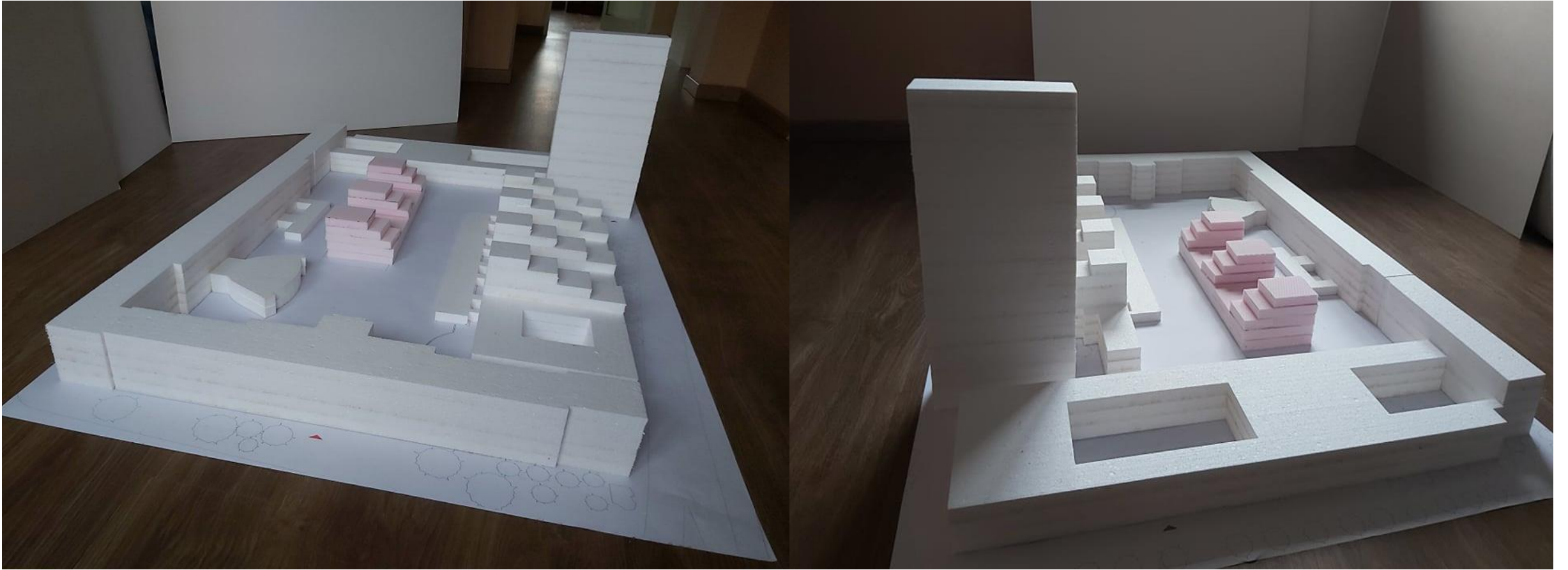
M = 1:750



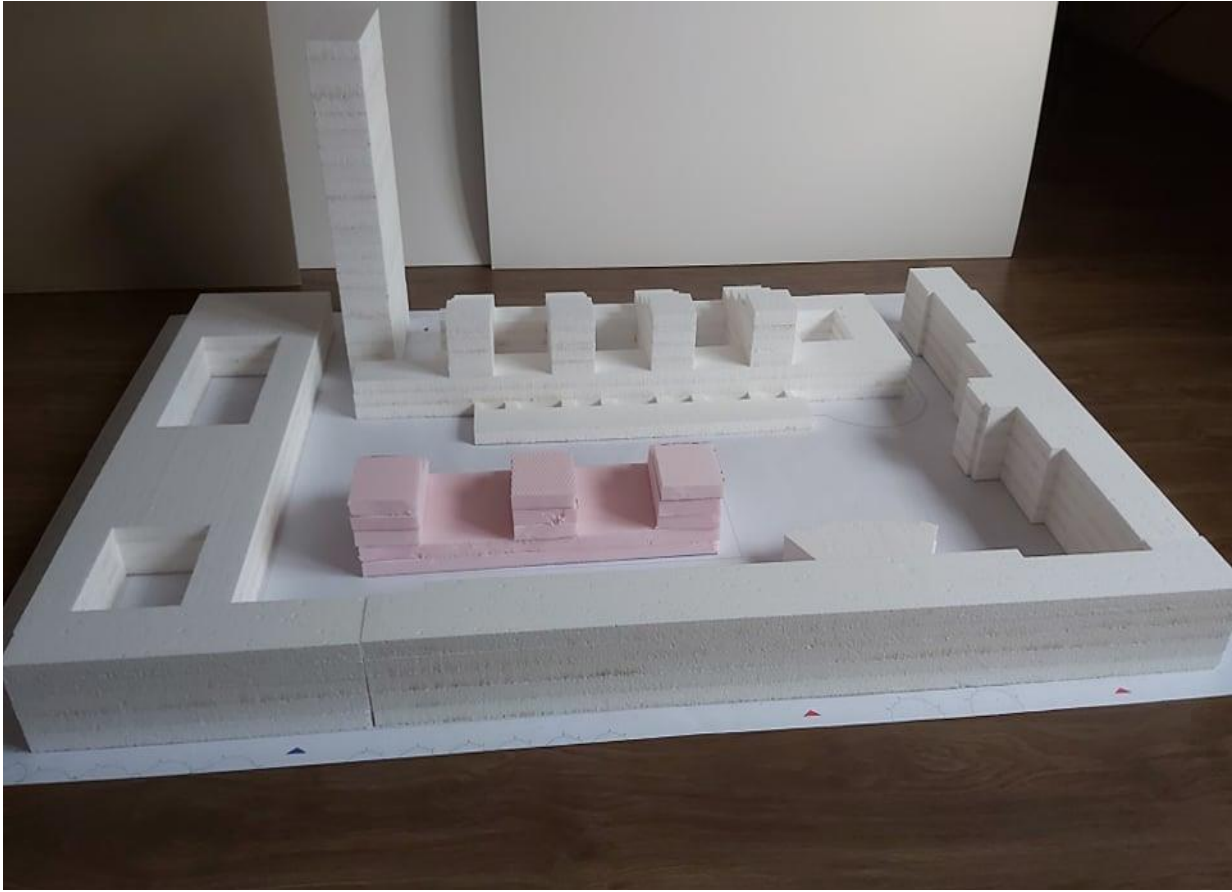
Photos of the model



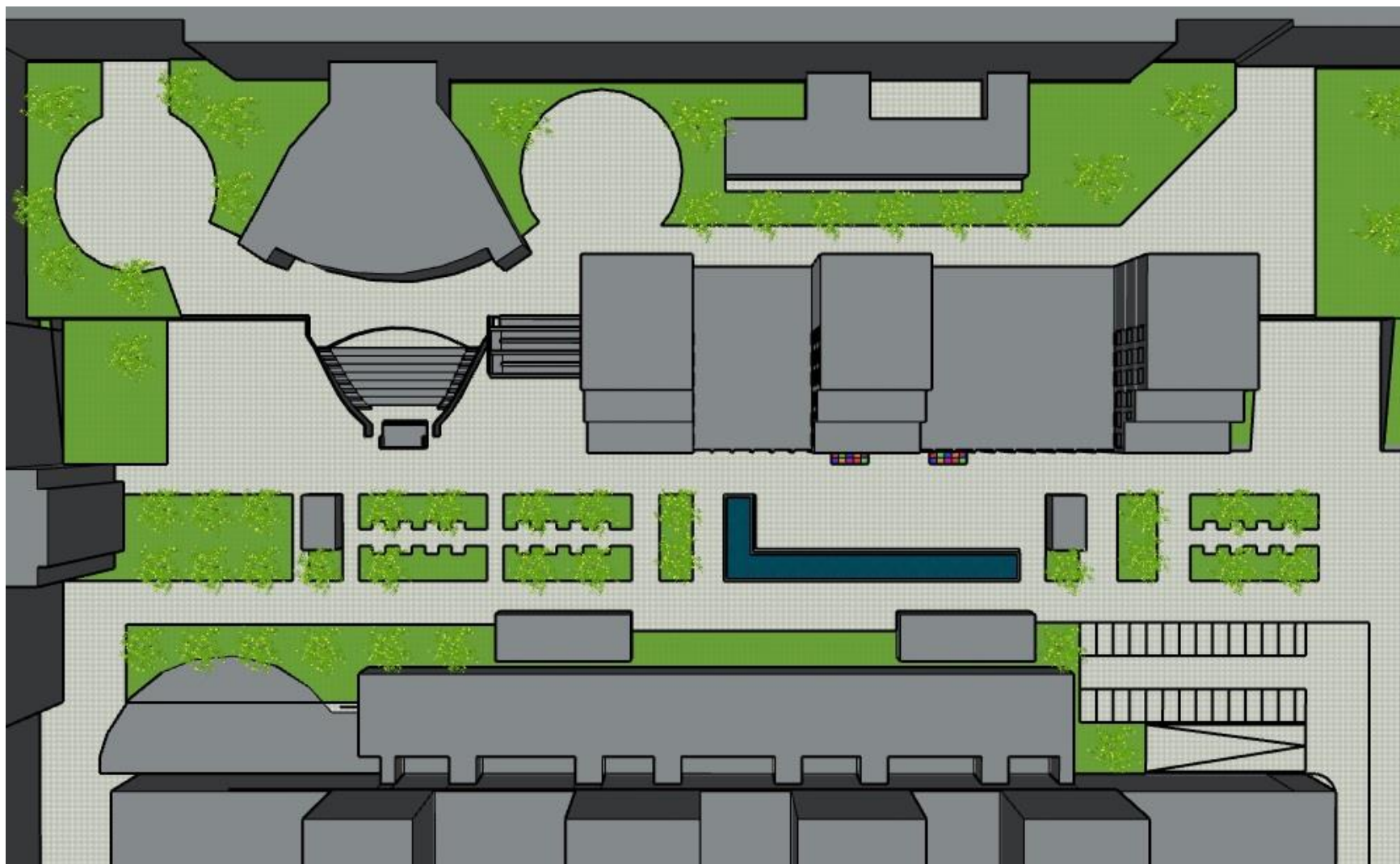
Photos of the model



Photos of the model



Visualization



Visualization



Visualization



Visualization



Visualization

