

Lenda: Dizajn I Enterierit

Tema: Fitnes&Bar&Sportshop

Profesori: Ajhan Bajmaku

Asistenti: Blend Dema

Studenti: Dukagjin Dedaqi

Studenti: Endrit Latifi

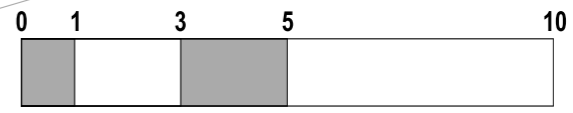
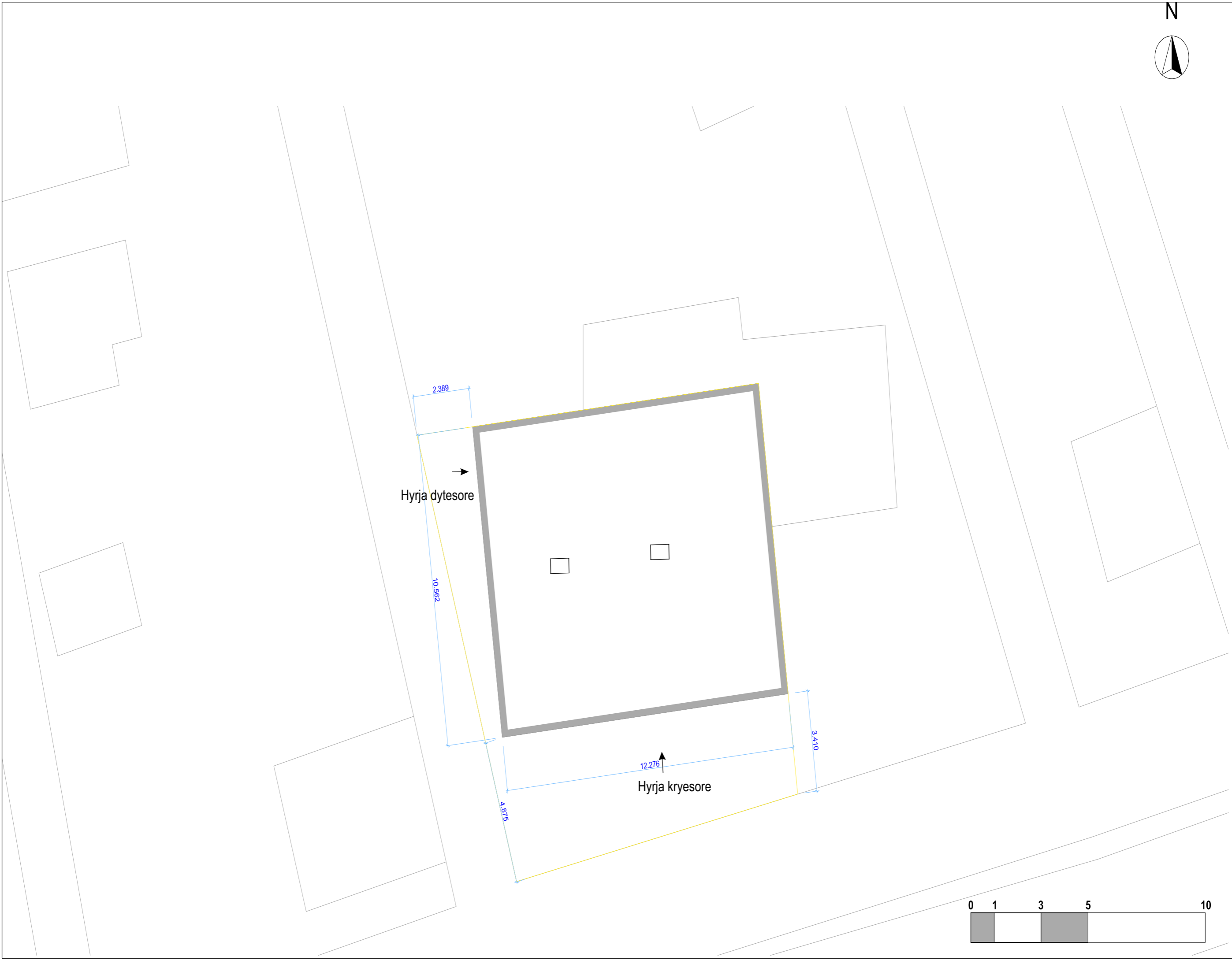
Lokacioni: Rruga "William Wolker"

Qyteti: Prizren

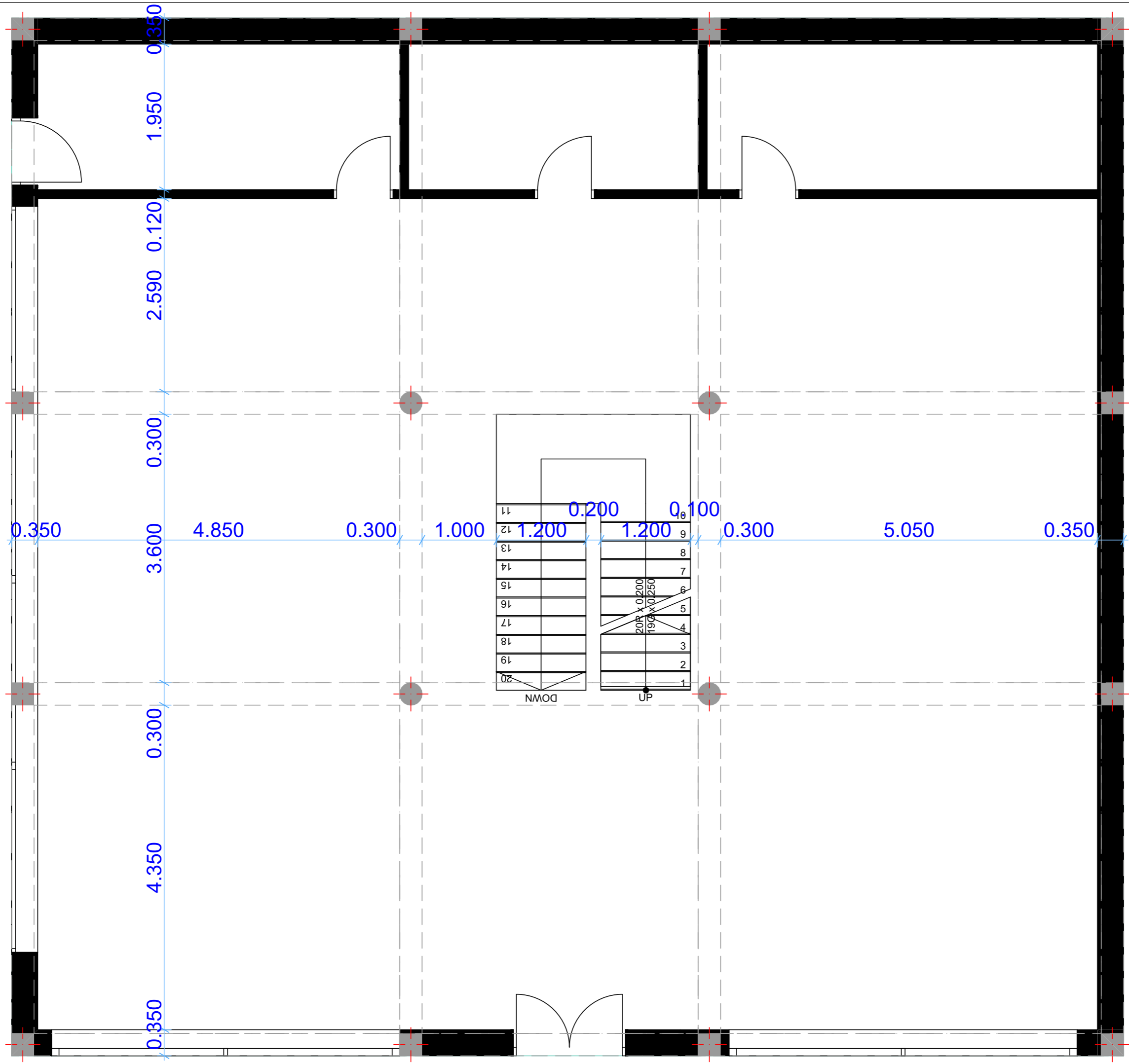
Shteti: Republika e Kosoves



Fieta	Perpjesa	Permbajtja e fletes	Studentet	Dukagjin Dedaqi, Endrit Latifi	DIZAJNI I ENTERIERIT
	02	Situacioni I gjere	Profesorët	Ajhan Bajmaku, Blend Dema	



Fieta	Perpiesa	Permbajtja e fletes	Studentet	Dukagjin Dedaqi, Endrit Latifi	DIZAJNI I ENTERIERIT
			Profesorët	Ajhan Bajmaku, Blend Dema	
03	Situacioni I ngushte				



Fleta

Perpjesa

04

1:50

Permbajtja e fletes

Baza ekzistuese e perdheses

Studentet

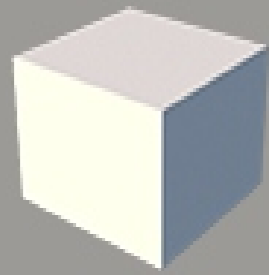
Profesorët

Dukagjin Dedaqi, Endrit Latifi

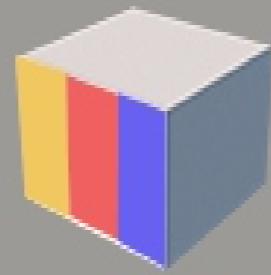
Ajhan Bajmaku, Blend Dema

DIZAJNI  
ENTERIERIT

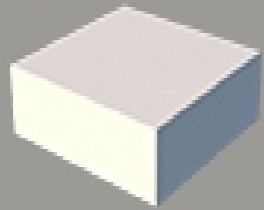




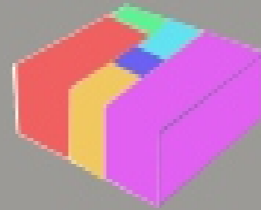
Objekti  
(Kub)



Ndarja e zonave

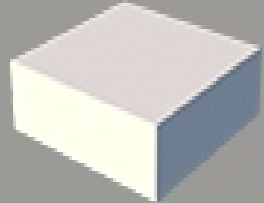


Objekti  
(Drejtëndesh)

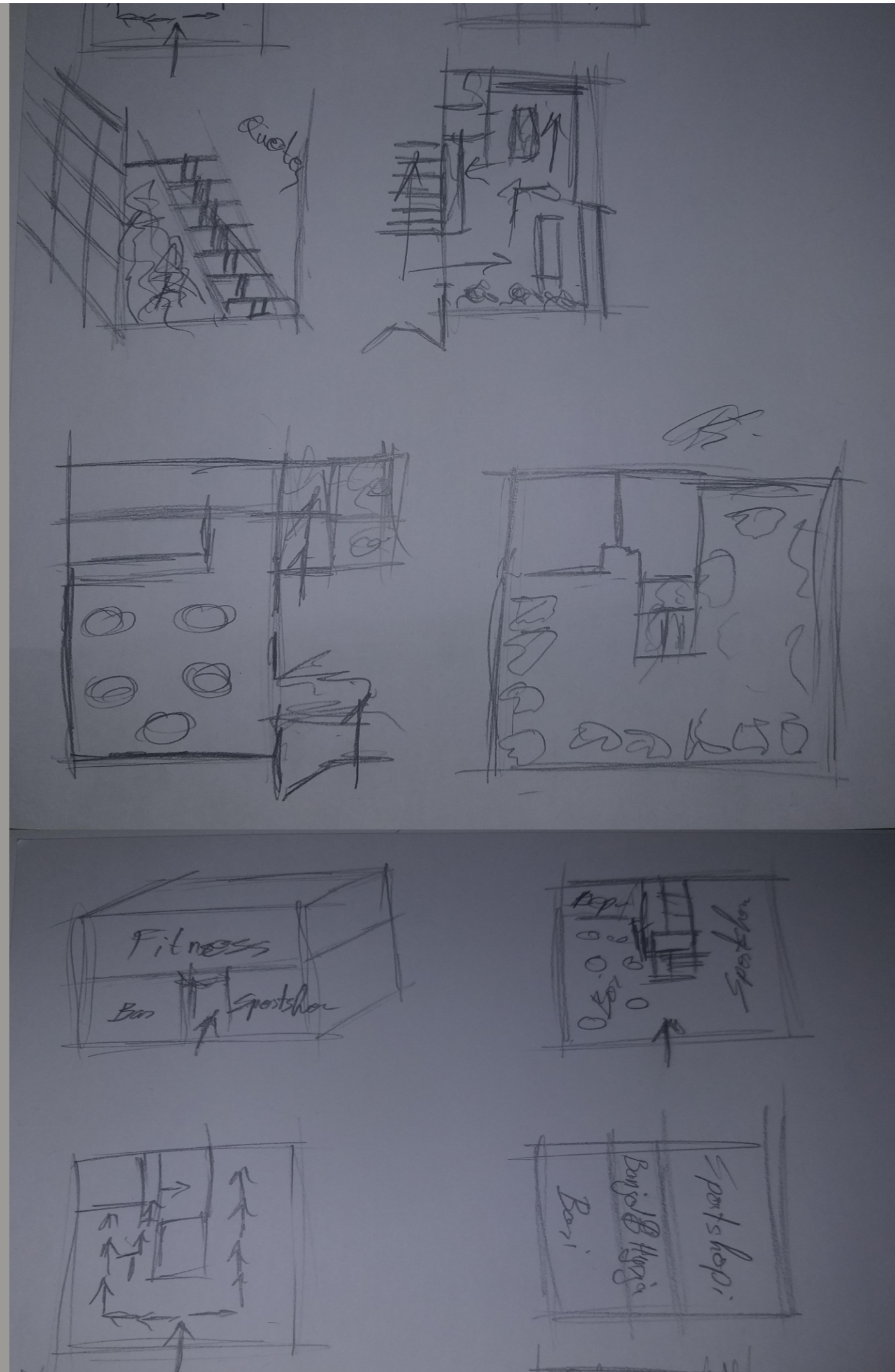
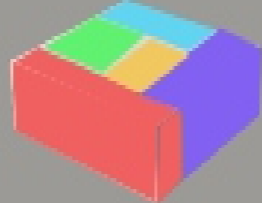


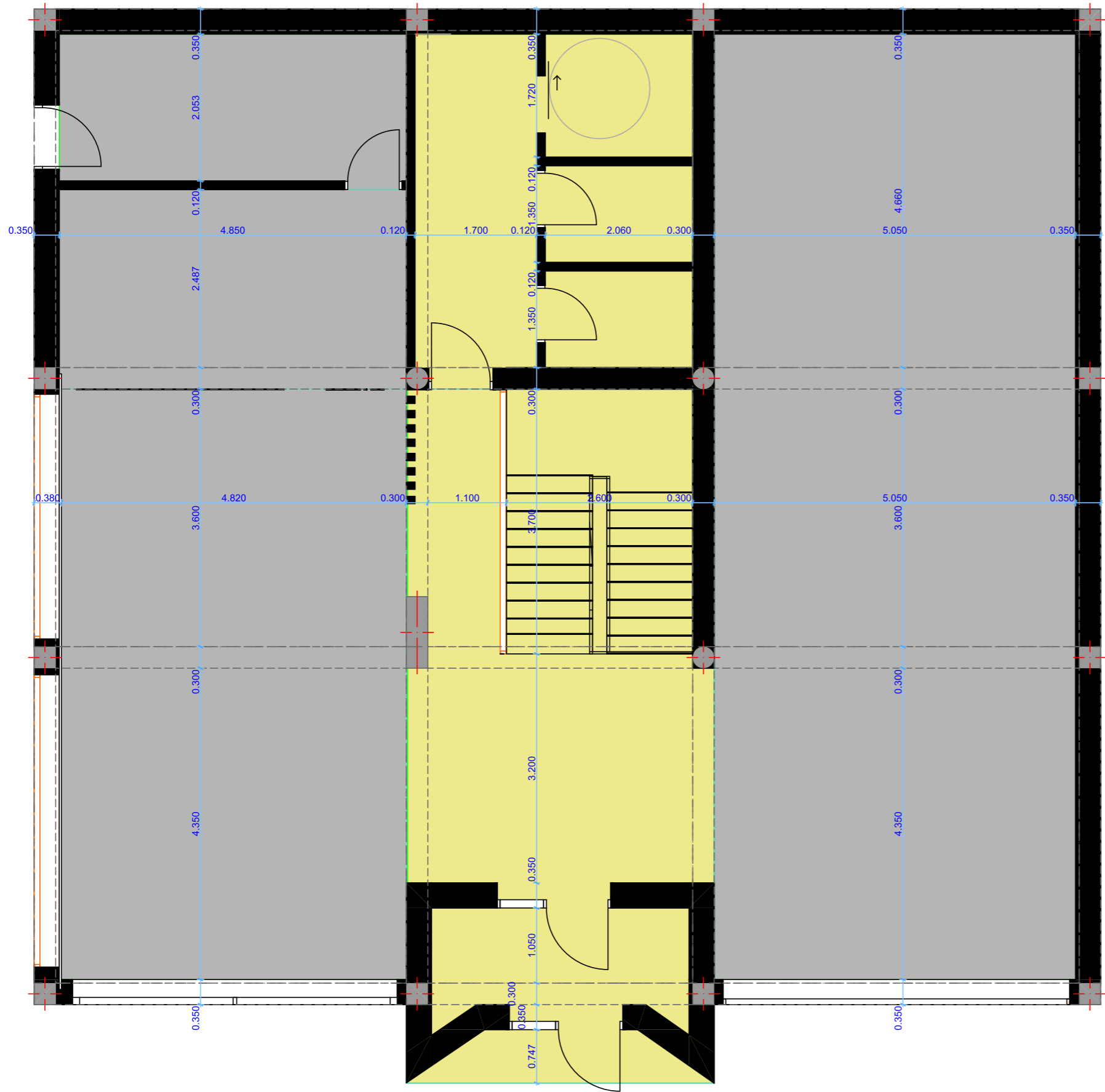
Ndarja e zonave

Objekti  
(Drejtëndesh)



Ndarja e zonave



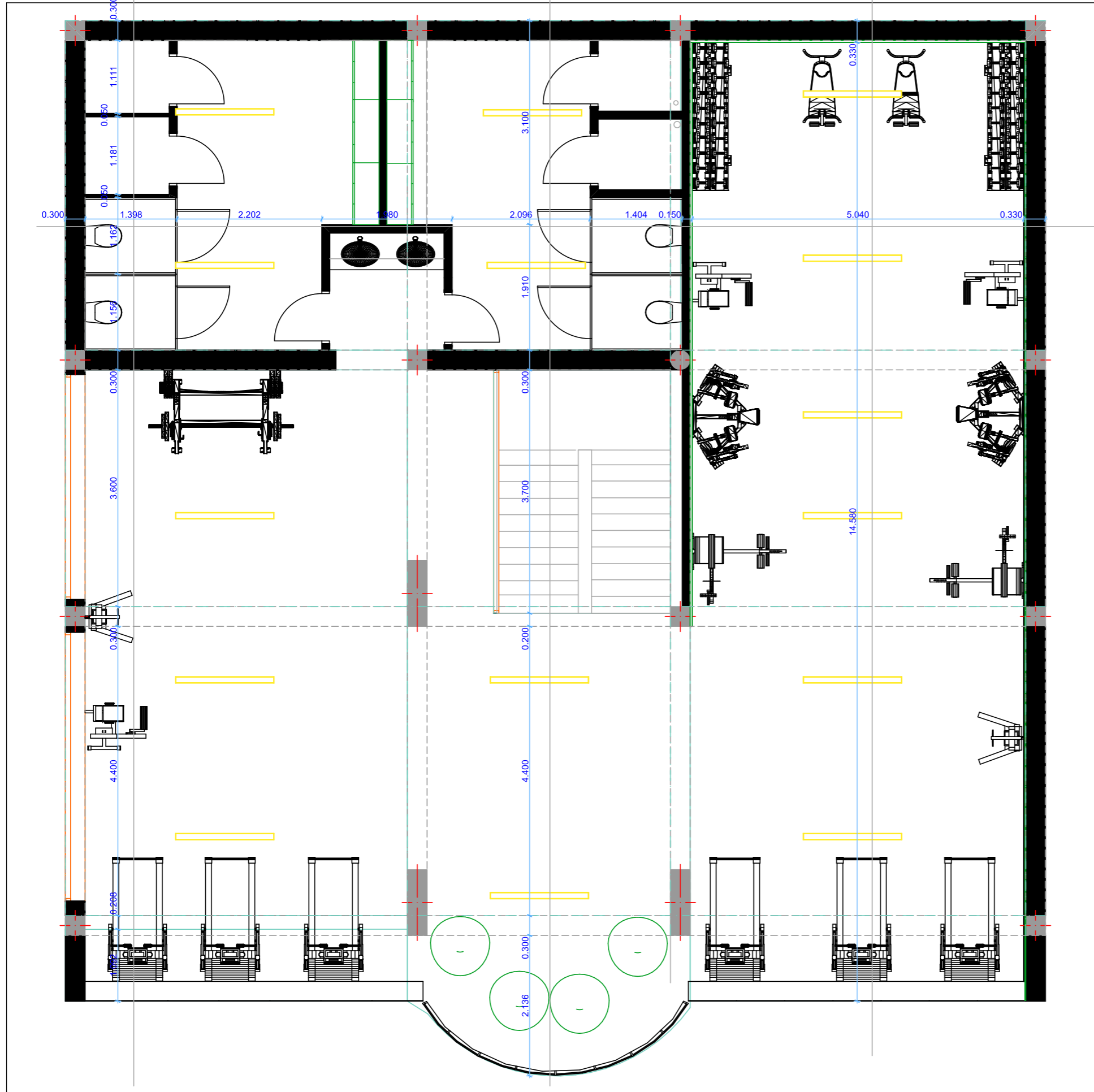


- Materizimi**
- Epox Antracid  
Siperfaqja: 131m<sup>2</sup>  
Kodi: #383E42  
RGB: 56,62,66
  - Epox te verdhe  
Siperfaqja 62m<sup>2</sup>  
Kodi: #EACE09  
RGB: 234,206,9

Fieta	Perpiesa	07	1:65	Permbajtja e fletes	Studentet	Dukagjin Dedaqi, Endrit Latifi	DIZAJNI I ENTERIERIT
				Baza e perdheses pa orendi	Profesorët	Ajhan Bajmaku, Blend Dema	







Fleta

Perpjesa

**10 1:65**

Permbajtja e fletes

**Baza e Katit  
me orendi**

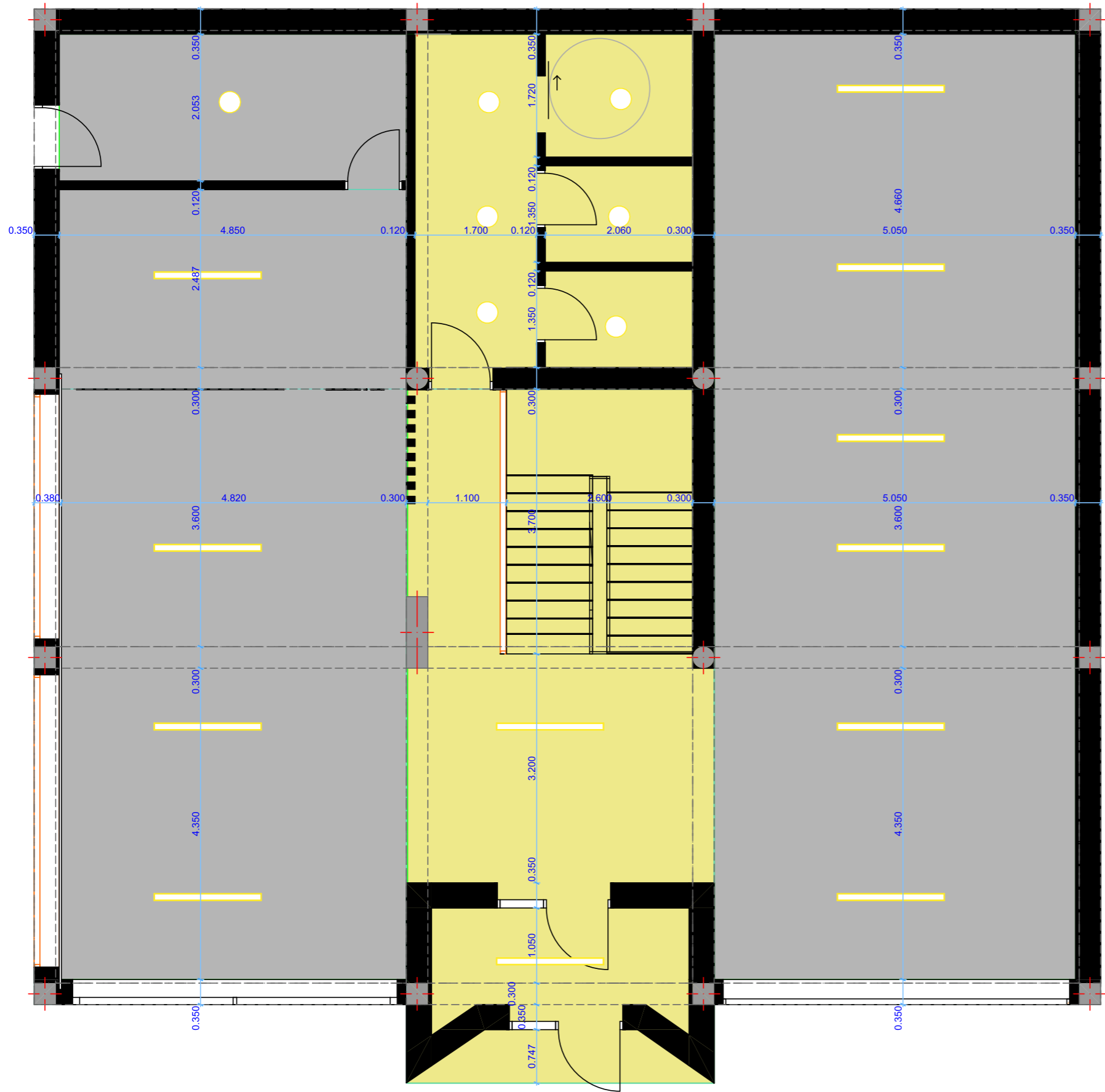
Studentet

Profesorët

Dukagjin Dedaqi, Endrit Latifi

Ajhan Bajmaku, Blend Dema

# DIZAJNI ENTERIERIT



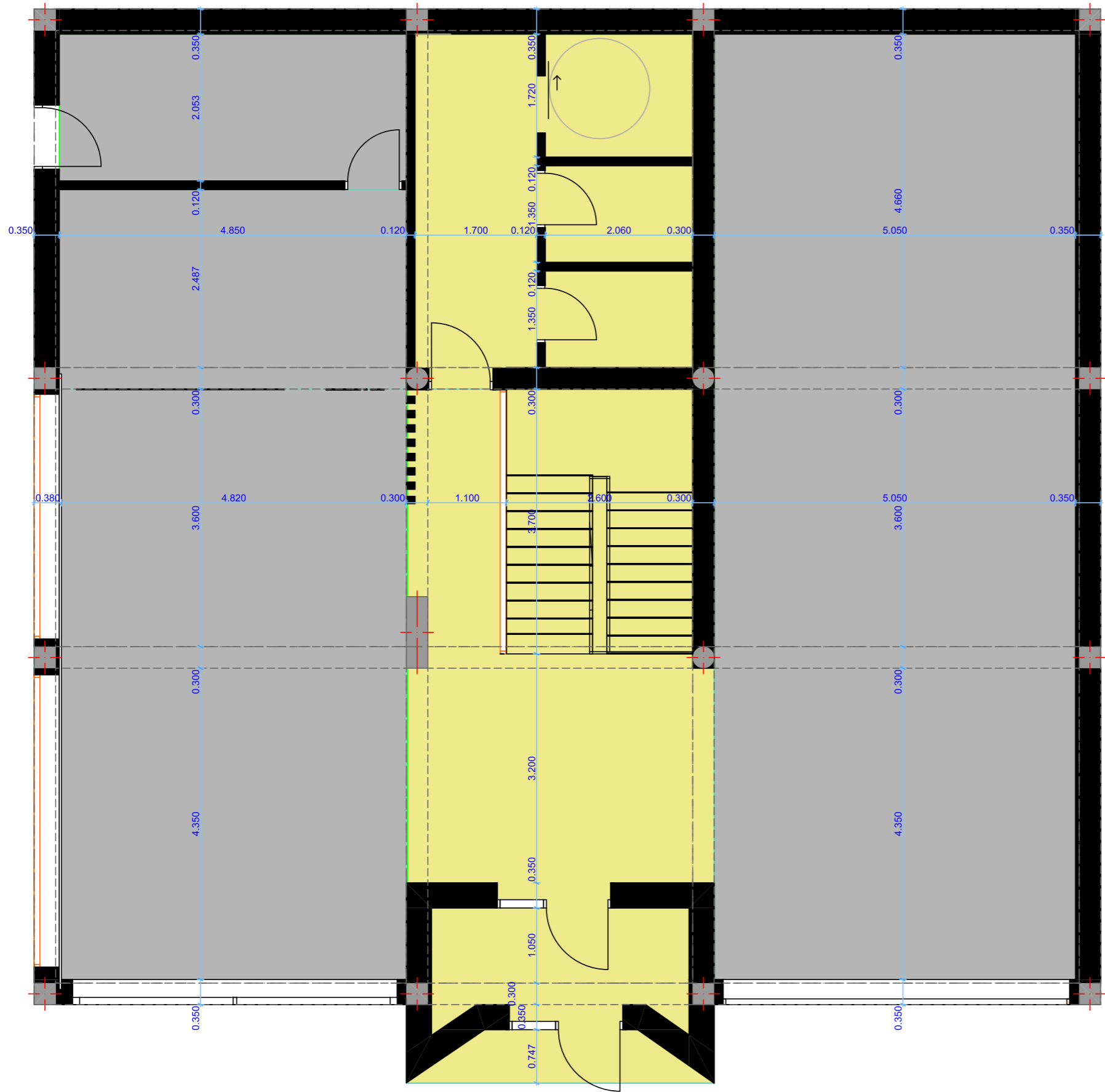
Gjatesia: 150cm  
 Gjeresia: 10cm  
 Lartesia: 83cm  
 Prodhuesi:  
 Lighthouse



Diametri: 30cm  
 Lartesia: 8cm  
 Prodhuesi:  
 Lighthouse

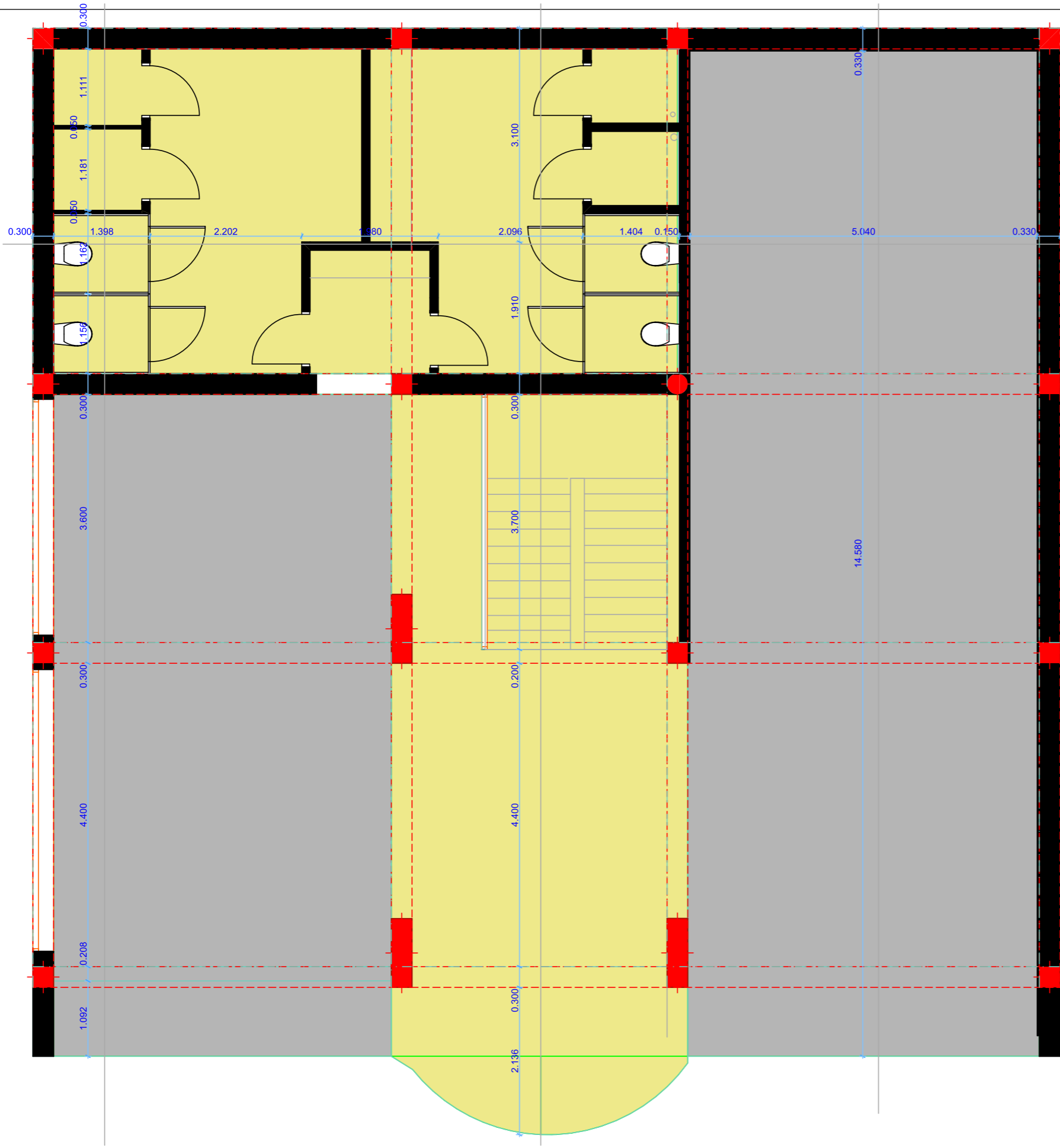
Fieta	Perpiesa	11	1:65	Permbajtja e fletes	Studentet		Dukagjin Dedaqi, Endrit Latifi		DIZAJNI I		
					Profesorët		Ajhan Bajmaku, Blend Dema		ENTERIERIT		
Baza e pllafonit te perdheses me ndriqim											





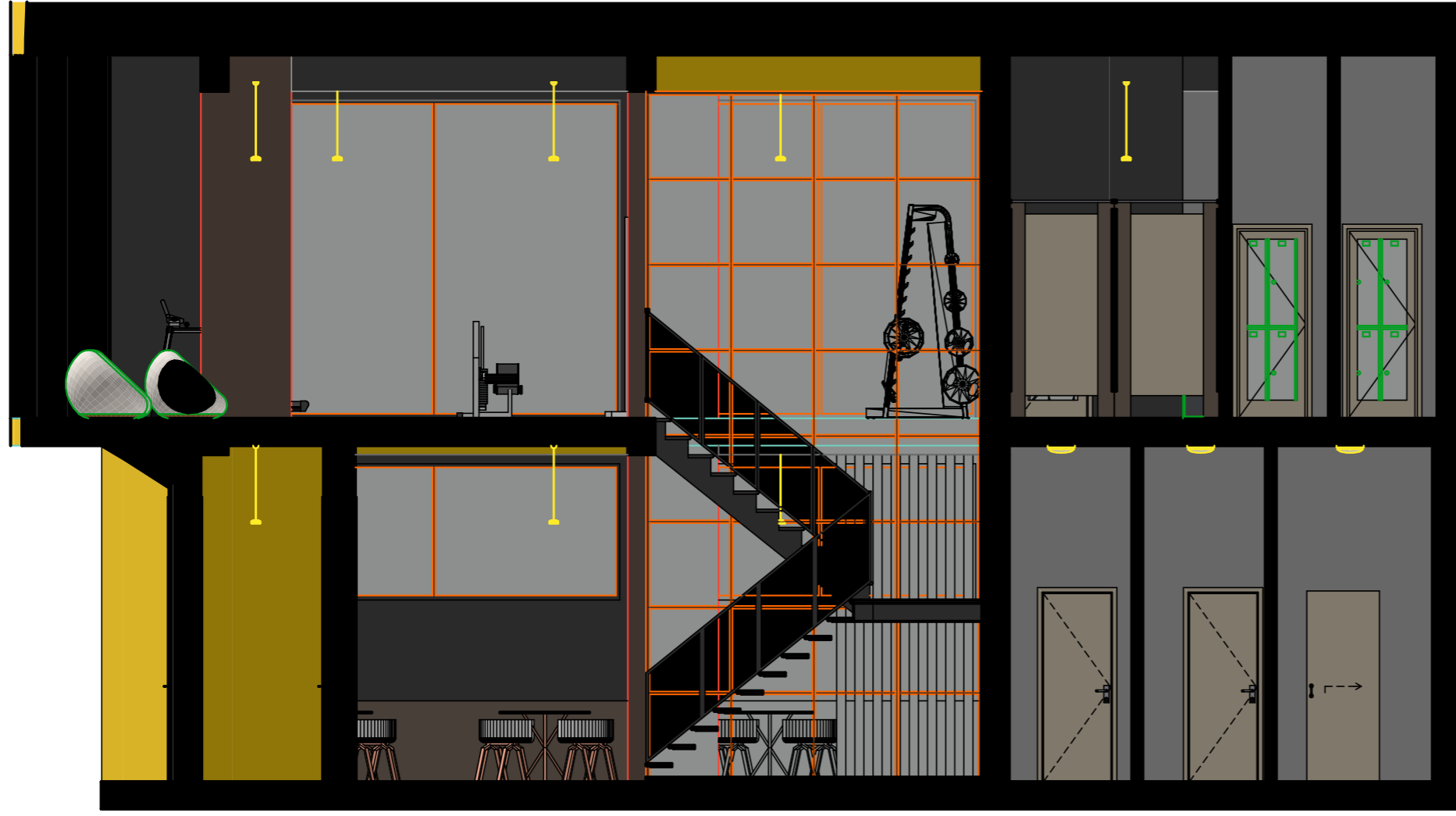
- Materizimi**
- Suvatim Antracid  
 Siperfaqja: 131m<sup>2</sup>  
 Kodi: #383E42  
 RGB: 56,62,66
  - Suvatim te verdhe  
 Siperfaqja 62m<sup>2</sup>  
 Kodi: #EACE09  
 RGB: 234,206,9

Fieta	Perpiesa	13	1:65	Permbajtja e fletes	Studentet	DIZAJNI I	
						ENTERIERIT	
				Dukagjin Dedaqi, Endrit Latifi	Profesor		
Baza e pllafonit te perdheses me materializim				Ajhan Bajmaku, Blend Dema			



- Materizimi**
- Suvatim Antracid**  
 Siperfaqja: 121m<sup>2</sup>  
 Kodi: #383E42  
 RGB: 56,62,66
  - Suvatim te verdhe**  
 Siperfaqja 87m<sup>2</sup>  
 Kodi: #EACE09  
 RGB: 234,206,9

Fieta	Perpiesa	Permbajtja e fletes		<b>DIZAJNI I ENTERIERIT</b>	
		<b>Baza e pllafonit te katit me materializim</b>		Dukagjin Dedaqi, Endrit Latifi	Ajhan Bajmaku, Blend Dema
<b>14</b>	<b>1:65</b>	Studentet	Profesorët		



- Materizimi
- Suvatim Antracid  
Kodi: #383E42  
RGB: 56,62,66
  - Suvatim te verdhe  
Kodi: #EACE09  
RGB: 234,206,9

Fleta

Perpjesa

15 1:65

Permbajtja e fletes

Prerjet A-A, B-B

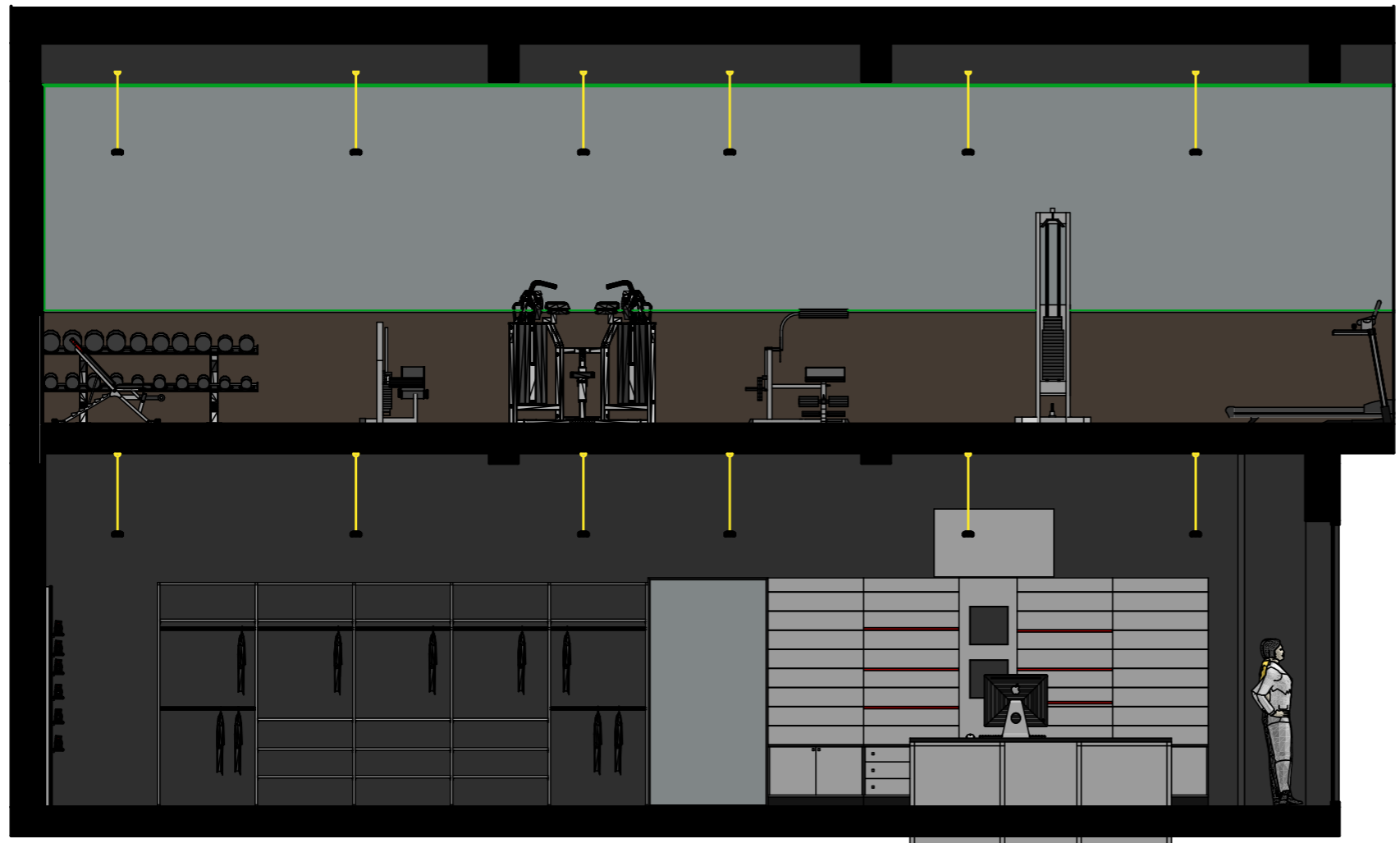
Studentet

Profesorët

Dukagjin Dedaqi, Endrit Latifi

Ajhan Bajmaku, Blend Dema

DIZAJNI  
ENTERIERIT



- Materizimi
- Suvatim Antracid  
Kodi: #383E42  
RGB: 56,62,66
  - Suvatim te verdhe  
Kodi: #EACE09  
RGB: 234,206,9

**DIZAJNI  
ENTERIERIT**

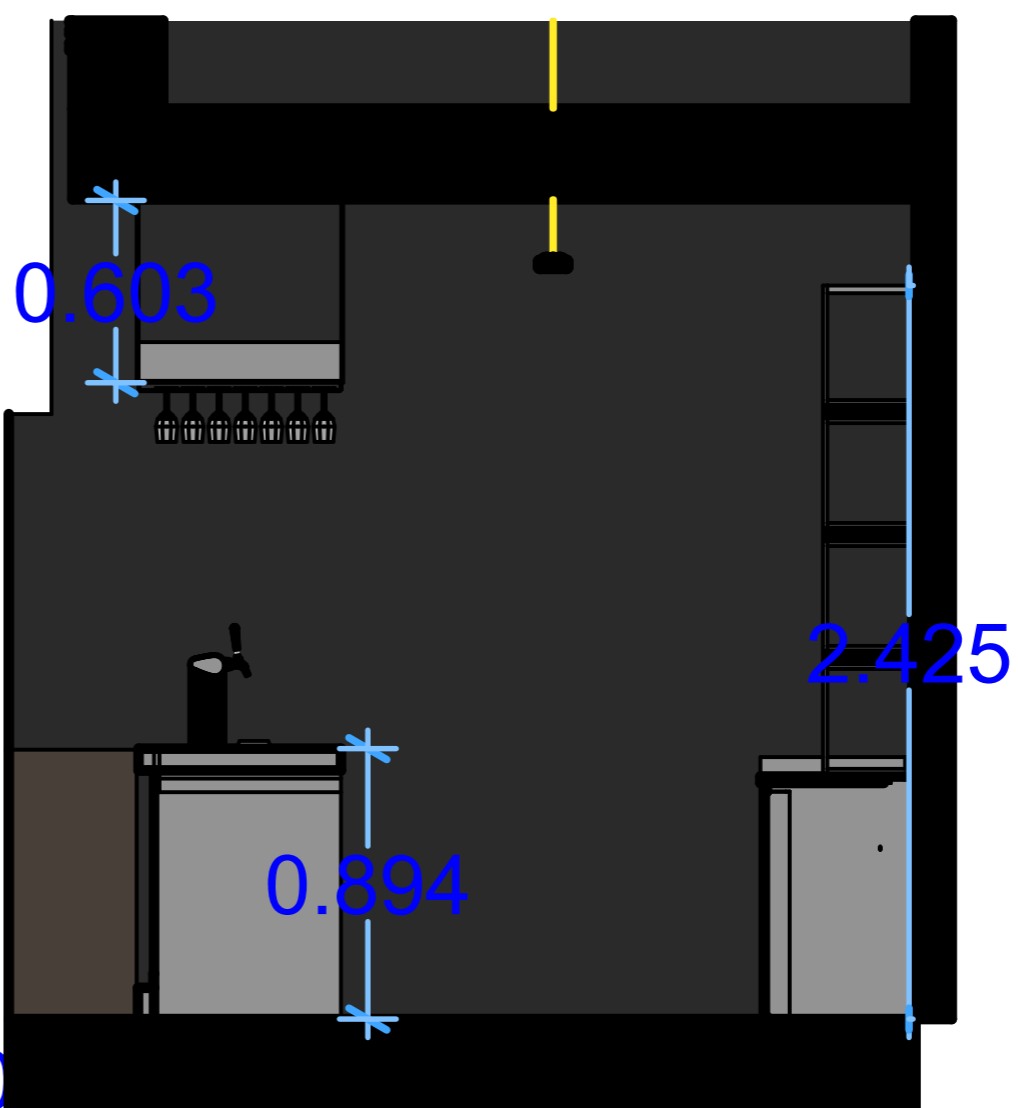
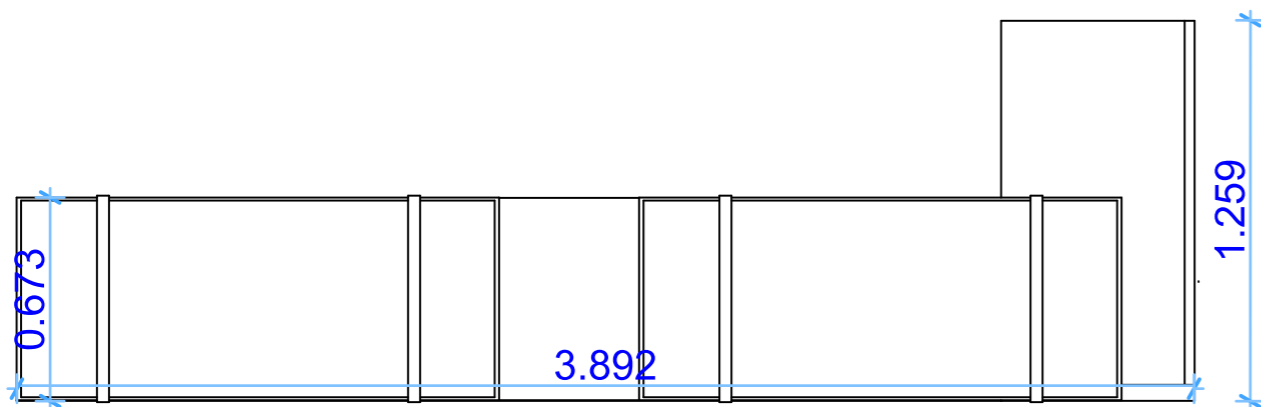
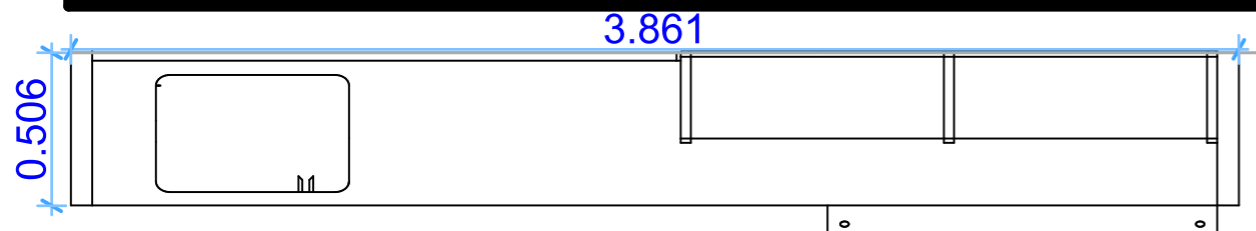
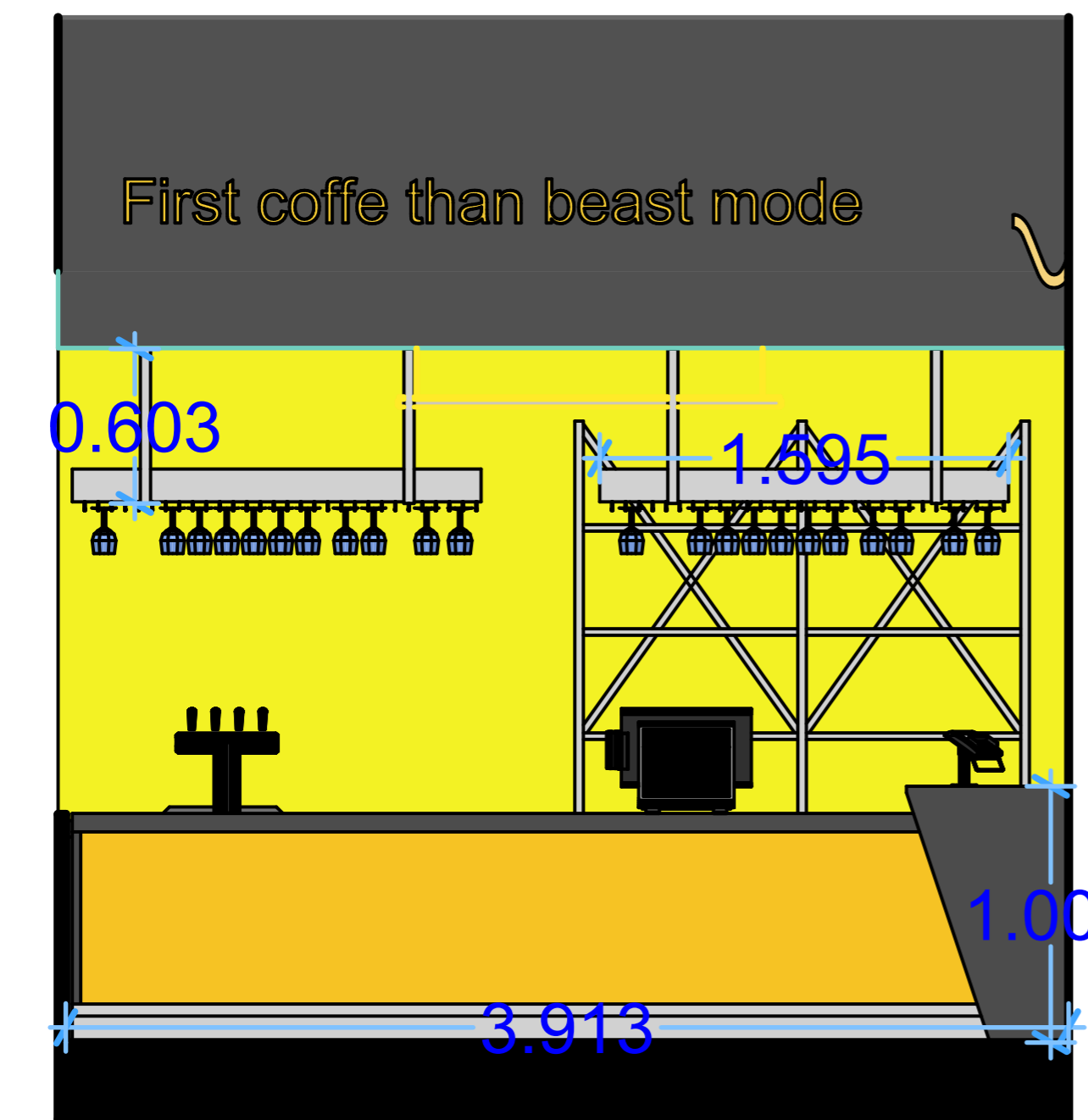
Dukagjin Dedaqi, Endrit Latifi  
Ajhan Bajmaku, Blend Dema

Studentet  
Profesorët

Permbajtja e fletes  
Prerjet C-C, D-D

Fleta  
Perpjesa  
**16**  
1:65

First coffee than beast mode



- Materizimi
- Mediapan Antracid  
Kodi: #383E42  
RGB: 56,62,66
  - Mediapan te verdhe  
Kodi: #EACE09  
RGB: 234,206,9

DIZAJNI I  
ENTERIERIT

Dukagjin Dedaqi, Endrit Latifi

Ajhan Bajmaku, Blend Dema

Studentet

Profesorët

Permbajtja e fletes

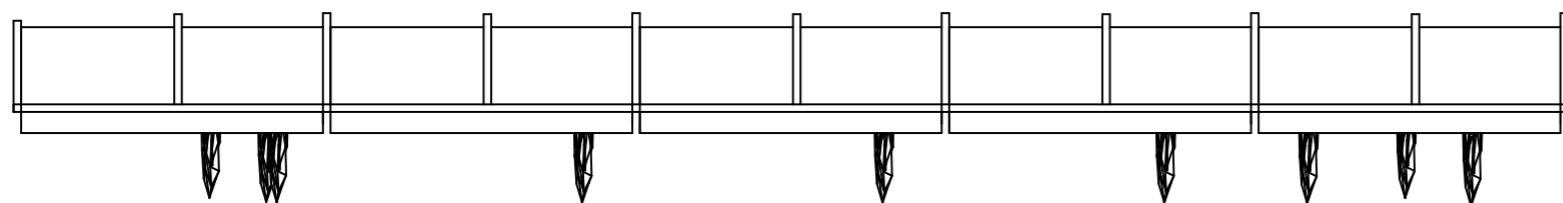
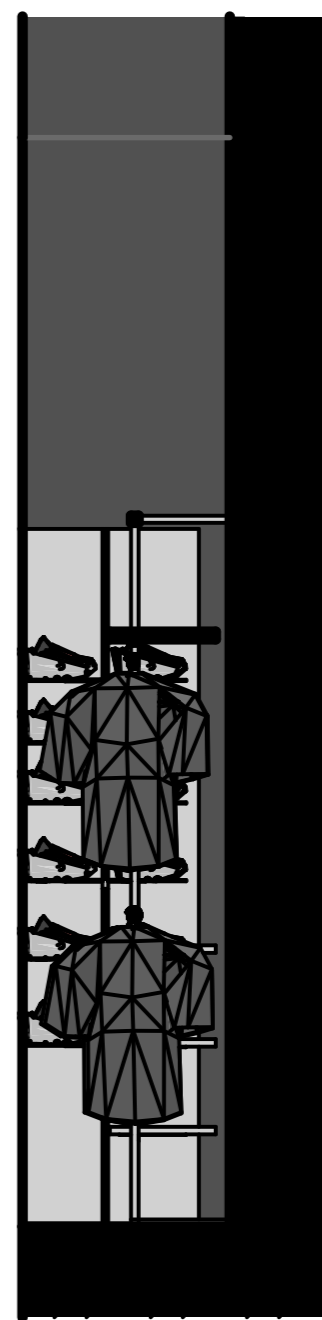
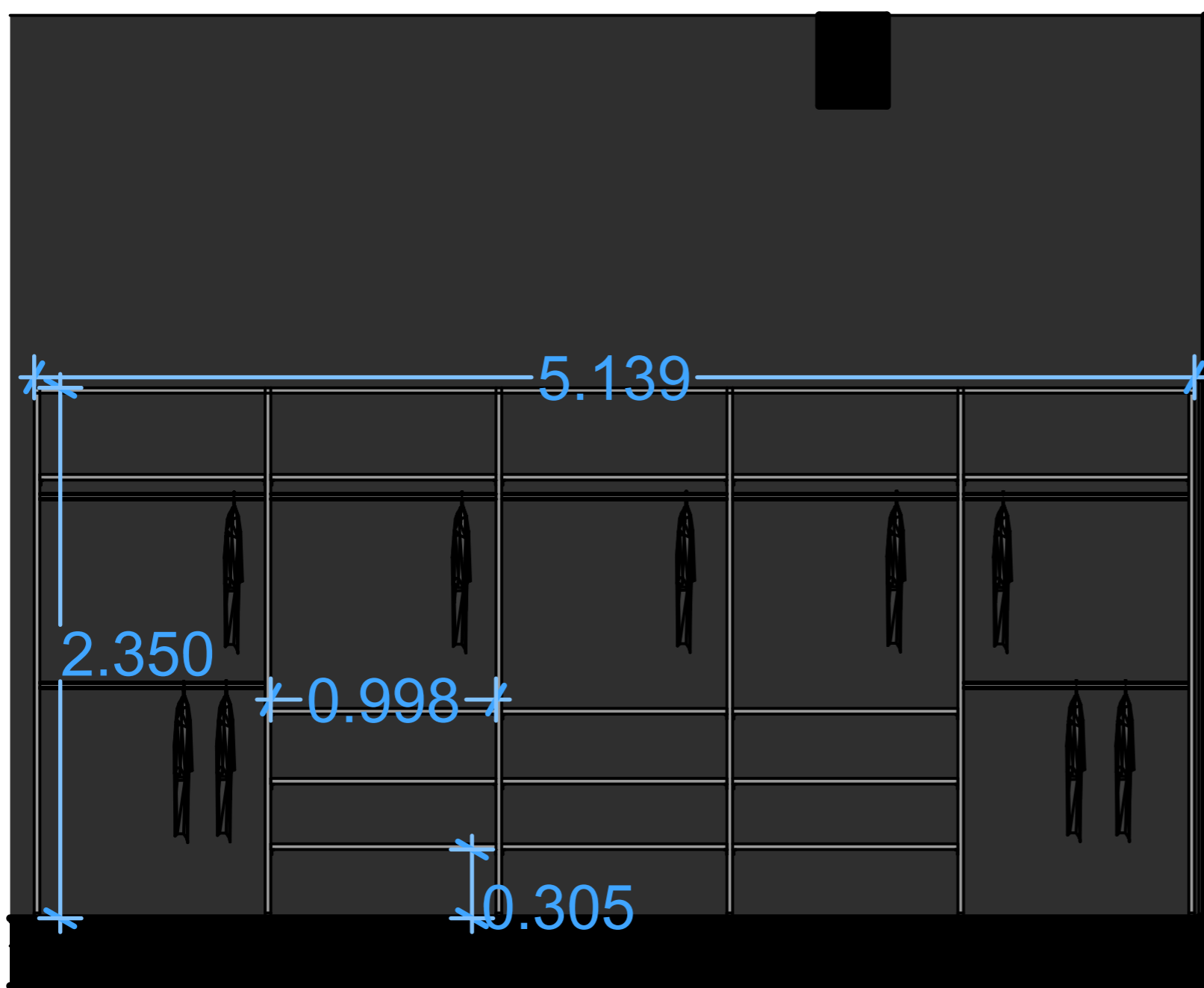
Dizajni I Shankut

Perpjesa

17 1:25

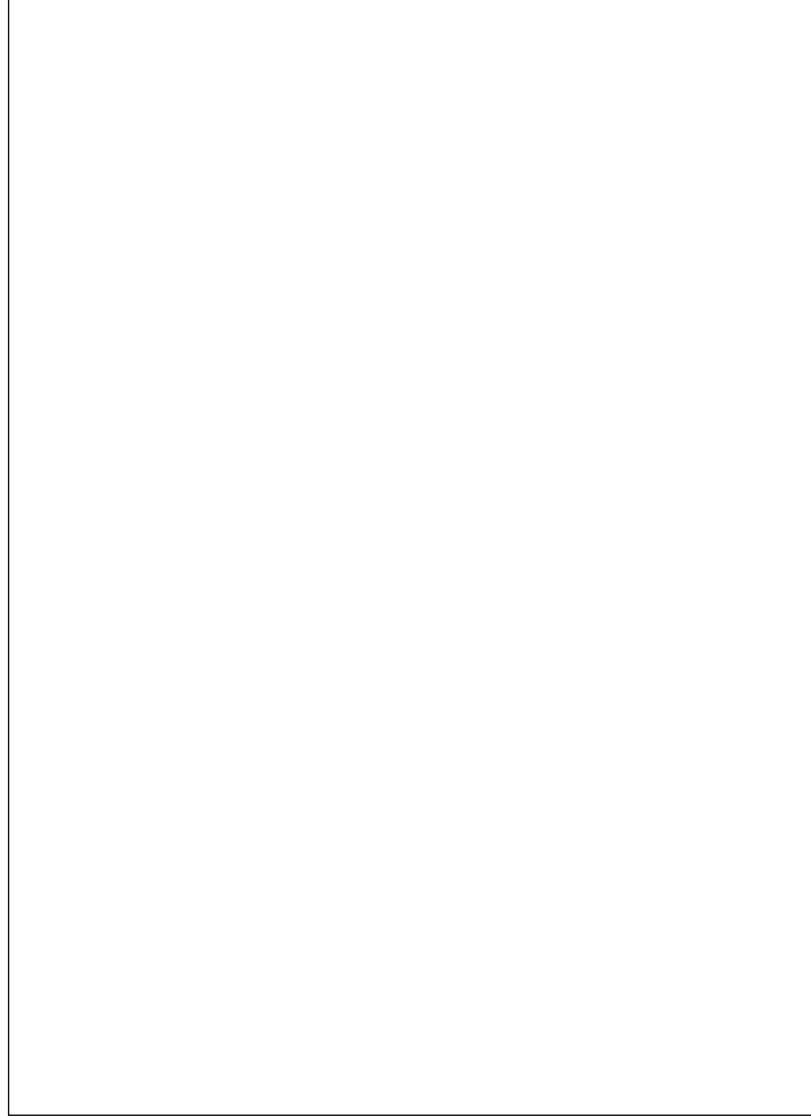
Fleta

17

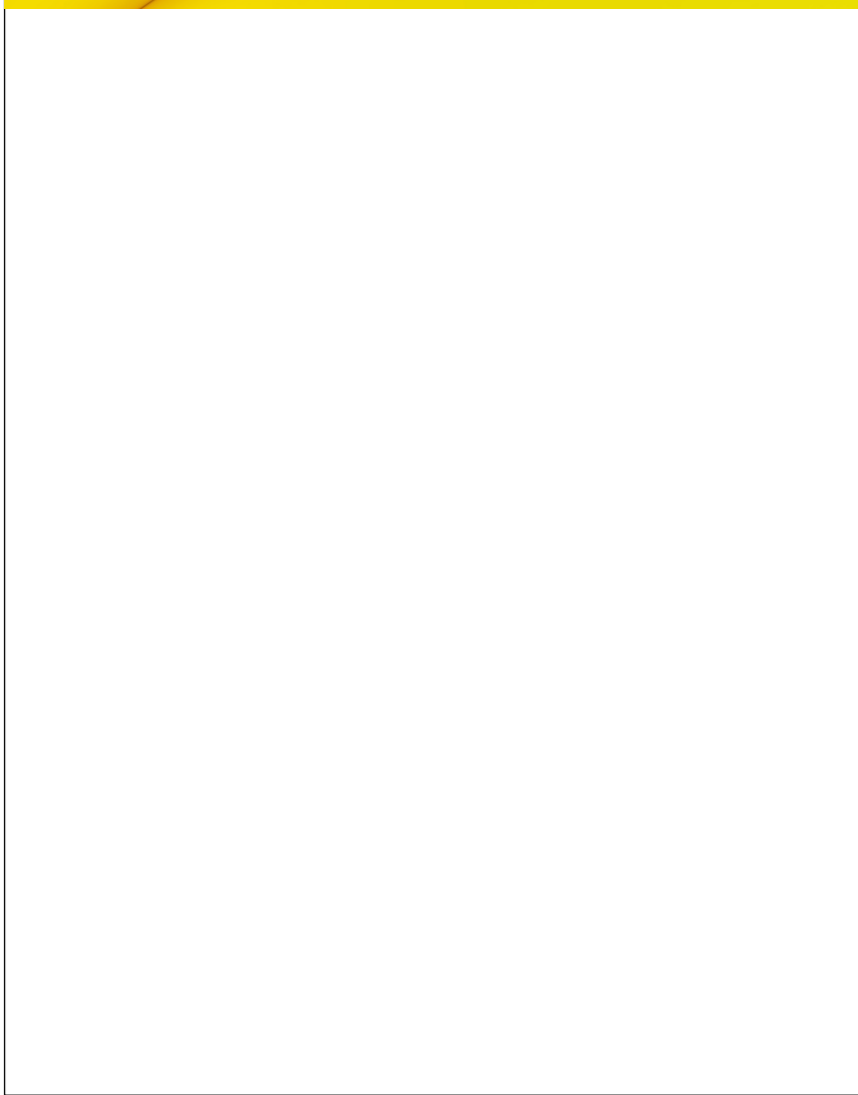


- Materizimi
- Alumin  
Kodi: #848789  
RGB: 132, 135, 137
  - Dru OSB  
Kodi: #966F33  
RGB: 150, 111, 51

Fieta	18	Perpjesa	1:25	Permbajtja e fletes	Dizajni I Raftëve	Studentet	Dukagjin Dedaqi, Endrit Latifi	DIZAJNI I ENTERIERIT
							Profesorët	



Fieta	Perpiesa	Permbajtja e fletes	Imazhe Atmosferike	Studentet	Dukagjin Dedaqi, Endrit Latifi	DIZAJNI I ENTERIERIT
				Profesoret	Ajhan Bajmaku, Blend Dema	
19						



Fieta	Perpiesa	Permbajta e fletes	Imazhe Atmosferike	Studentet	DIZAJNI I ENTERIERIT	
					Dukagjin Dedaqi, Endrit Latifi	Ajhan Bajmaku, Blend Dema
20				Profesoret		





22

Fleta

Perpjesa

Permbajtja e fletes

Imazhe Atmosferike

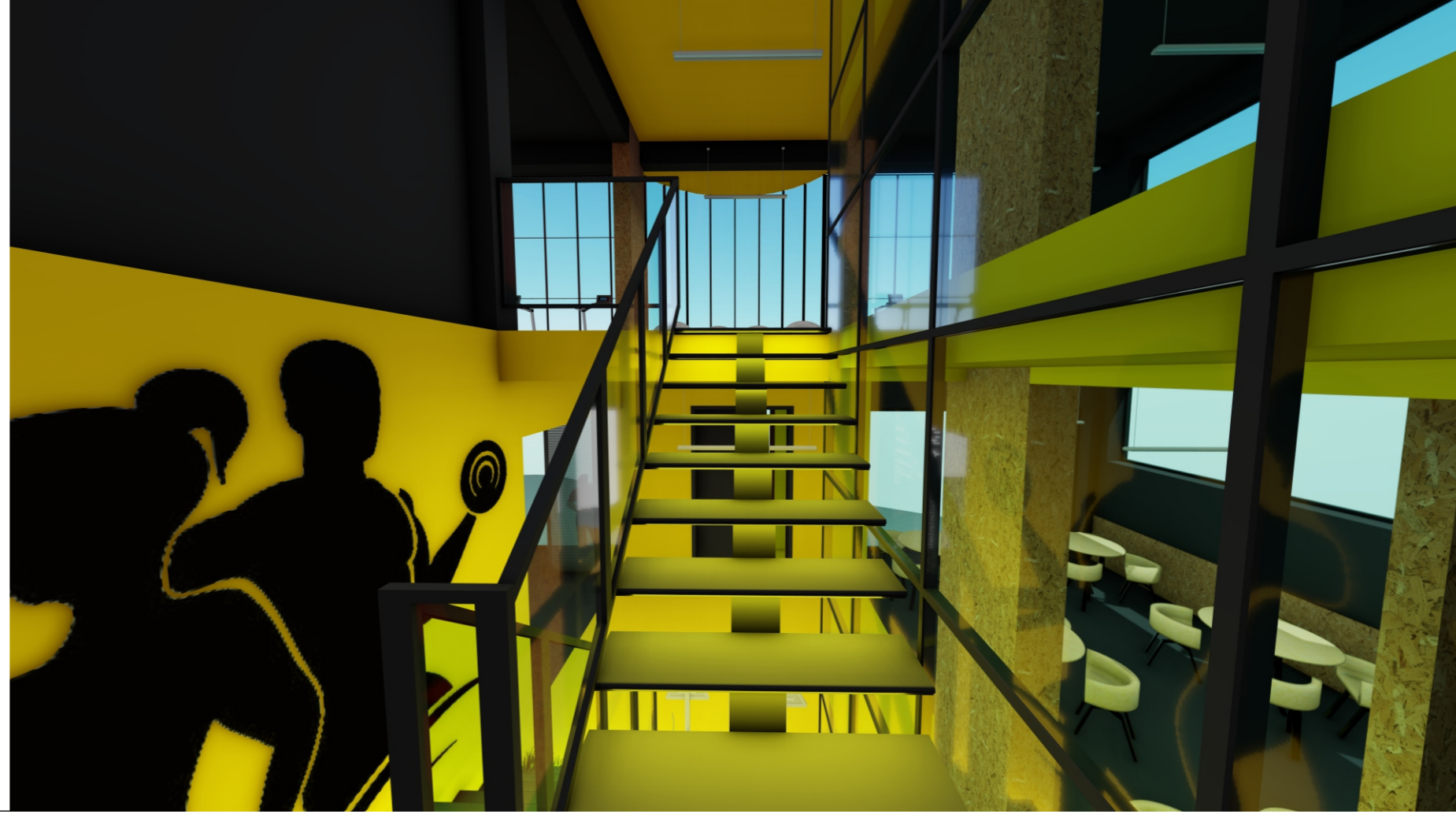
Studentet

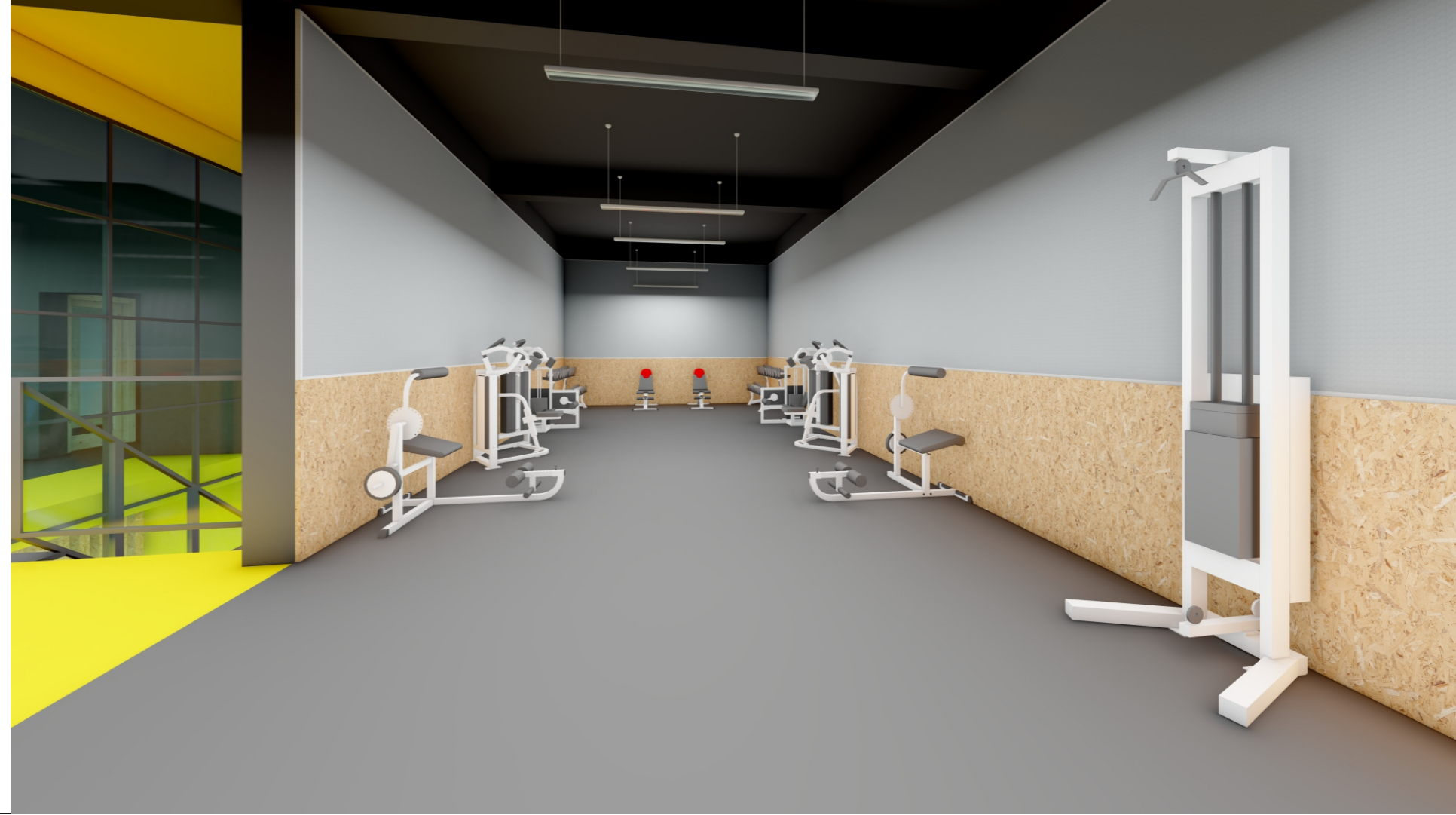
Profesoret

Dukagjin Dedaqi, Endrit Latifi

Ajhan Bajmaku, Blend Dema

DIZAJNI  
ENTERIERIT





Fleta

Perpjesa

Permbajtja e fletes

24

Imazhe Atmosferike

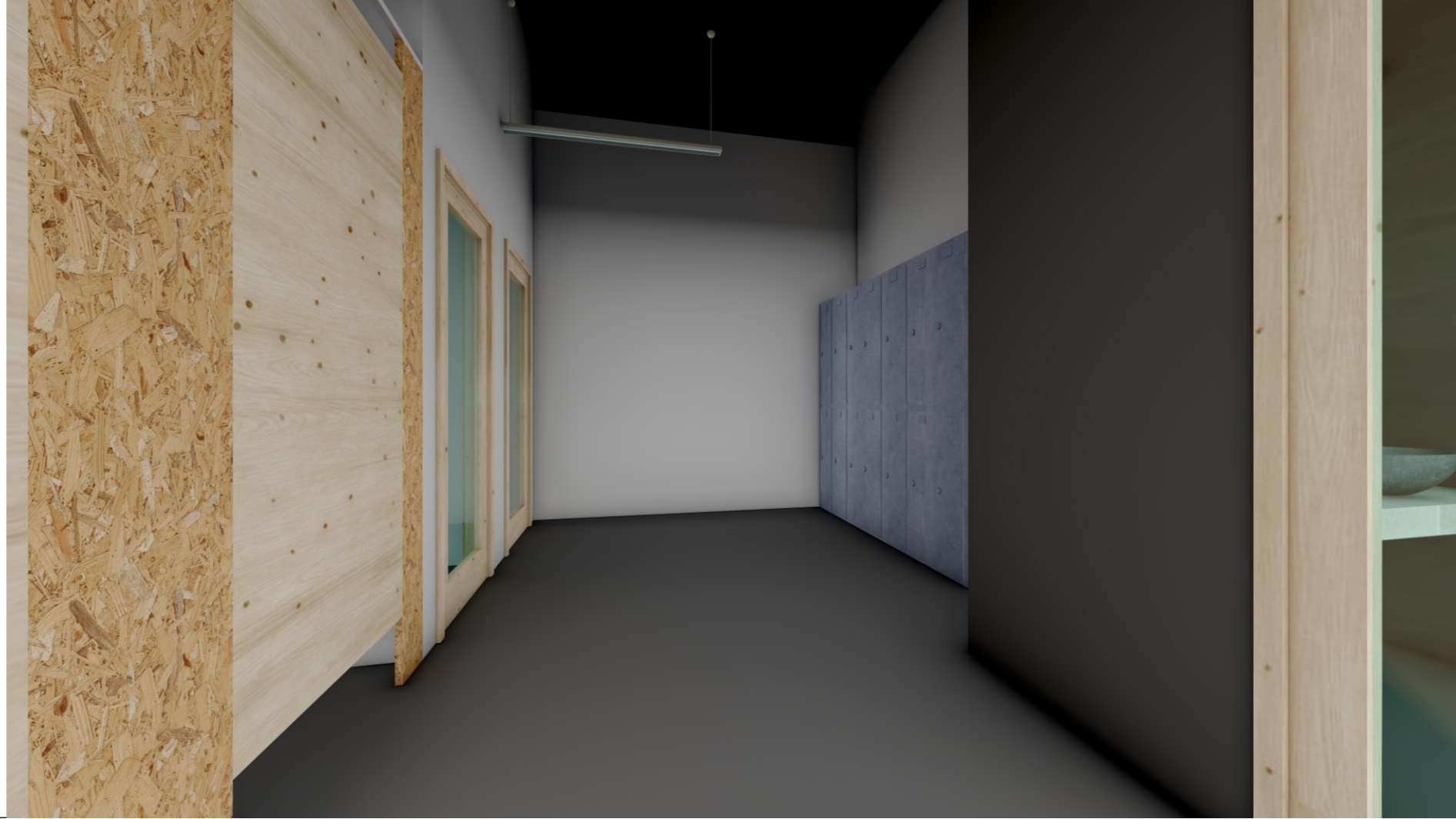
Studentet

Profesorët

Dukagjin Dedaqi, Endrit Latifi

Ajhan Bajmaku, Blend Dema

DIZAJNI  
ENTERIERIT



Fleta  
**25**

Perpjesa

Permbajtja e fletes

**Imazhe Atmosferike**

Studentet

Profesorët

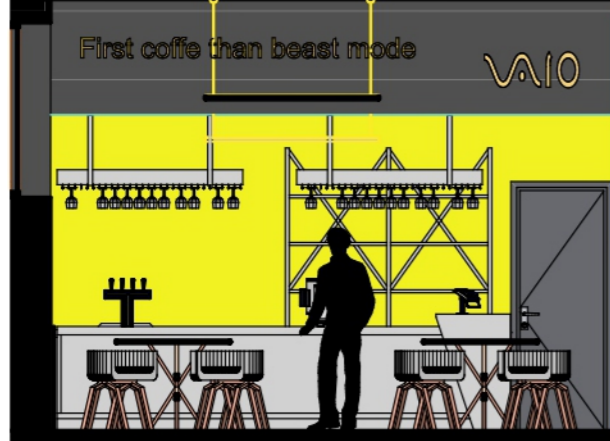
Dukagjin Dedaqi, Endrit Latifi

Ajhan Bajmaku, Blend Dema

**DIZAJNI I  
ENTERIERIT**



Fieta	Perpiesa	Permbajija e fletes	Imazhe Atmosferike	Studentet	Dukagjin Dedaqi, Endrit Latifi	DIZAJNI I ENTERIERIT
				Profesoret	Ajhan Bajmaku, Blend Dema	
26						



Sipas mendimit tone dhe se cka kishim ndryshuar nese kishim pasur me shume kohe eshte se kishim bere disa ndryshime ne pjesen mbrapa shankut do e kishim ndryshuar materialin do e kishim bere me dru OSB, do e kishim ndryshuar pakez fasaden e jashtme kemi pasur ca probleme me renderimin ne paraqitjen e pasqyrave andaj do kishim shikuar mundesi te tjera per renderim, pershkak te financave do I kishim lene shkallet solide dhe nuk do I kishim ndryshuar por neve na ka ndikuar ne dizajnin e pjeses se brendshme, tek pjesa e fitnesit do te I kishim ndare zonat me pjese te gjelbrimit.

Flota	Perpiesa	Permbajtja e fletes	Studentet	DIZAJNI	
				Dukagjin Dedaqi, Endrit Latifi	ENTERIERIT
28		Kritike	Profesoret	Ajhan Bajmaku, Blend Dema	