



CYPRUS INTERNATIONAL UNIVERSITY

**ARCH502~
GRADUATE STUDIO II**

**Slovak University of Technology in Bratislava
Campus Solution**

**Gürpınar Olay KÖKAT 22008906
Zehra Nur AYAN ÖVER 22008485**

**Instructor:
Asst. Prof. Dr. Ehsan REZA**

DYNAMISM OF WAVE

**SUSPENDED
DESIGN**

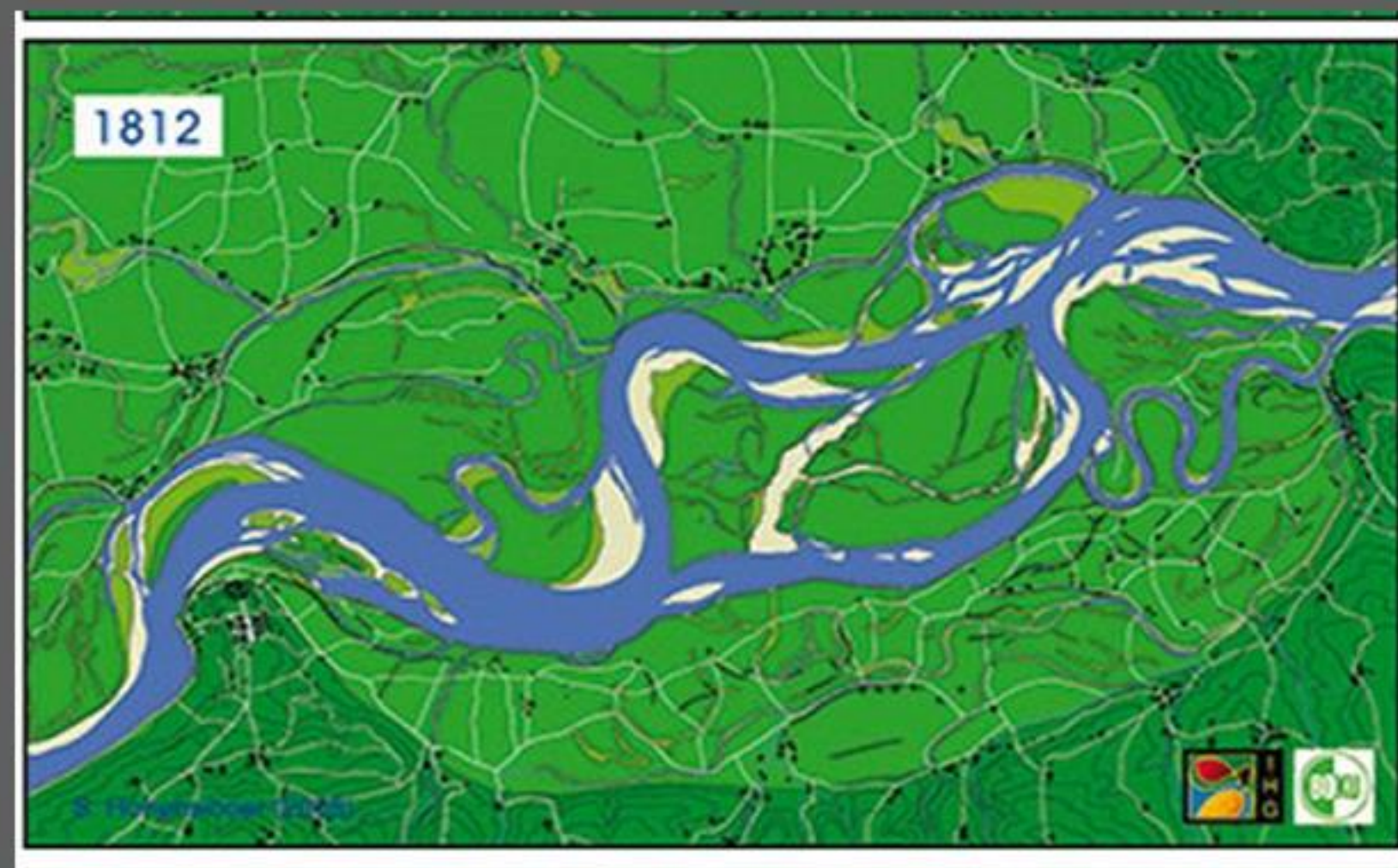
RAMP

COMPOSITE PANEL

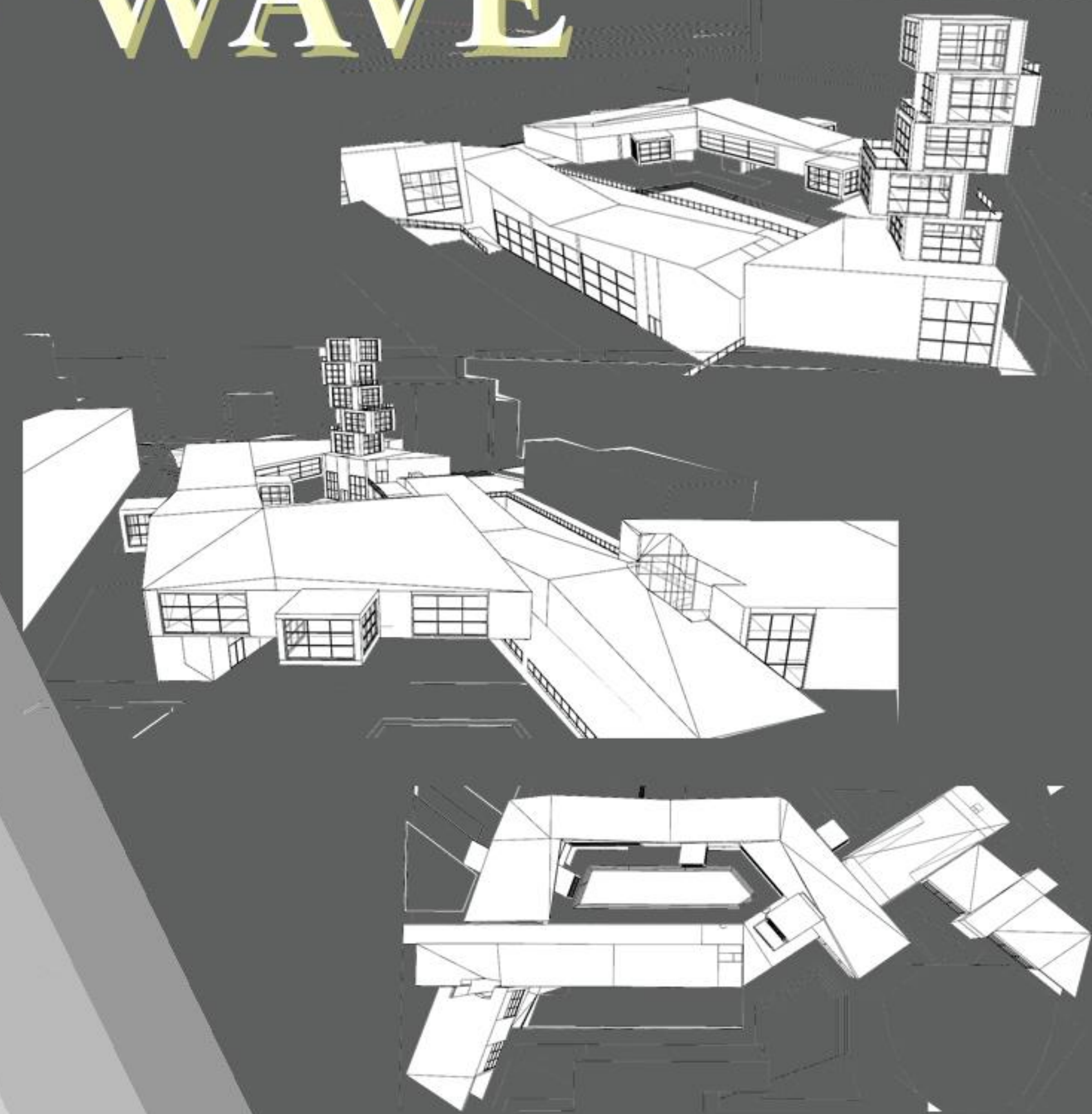
INNER COURTYARD

LEVEL DIFFERENCES

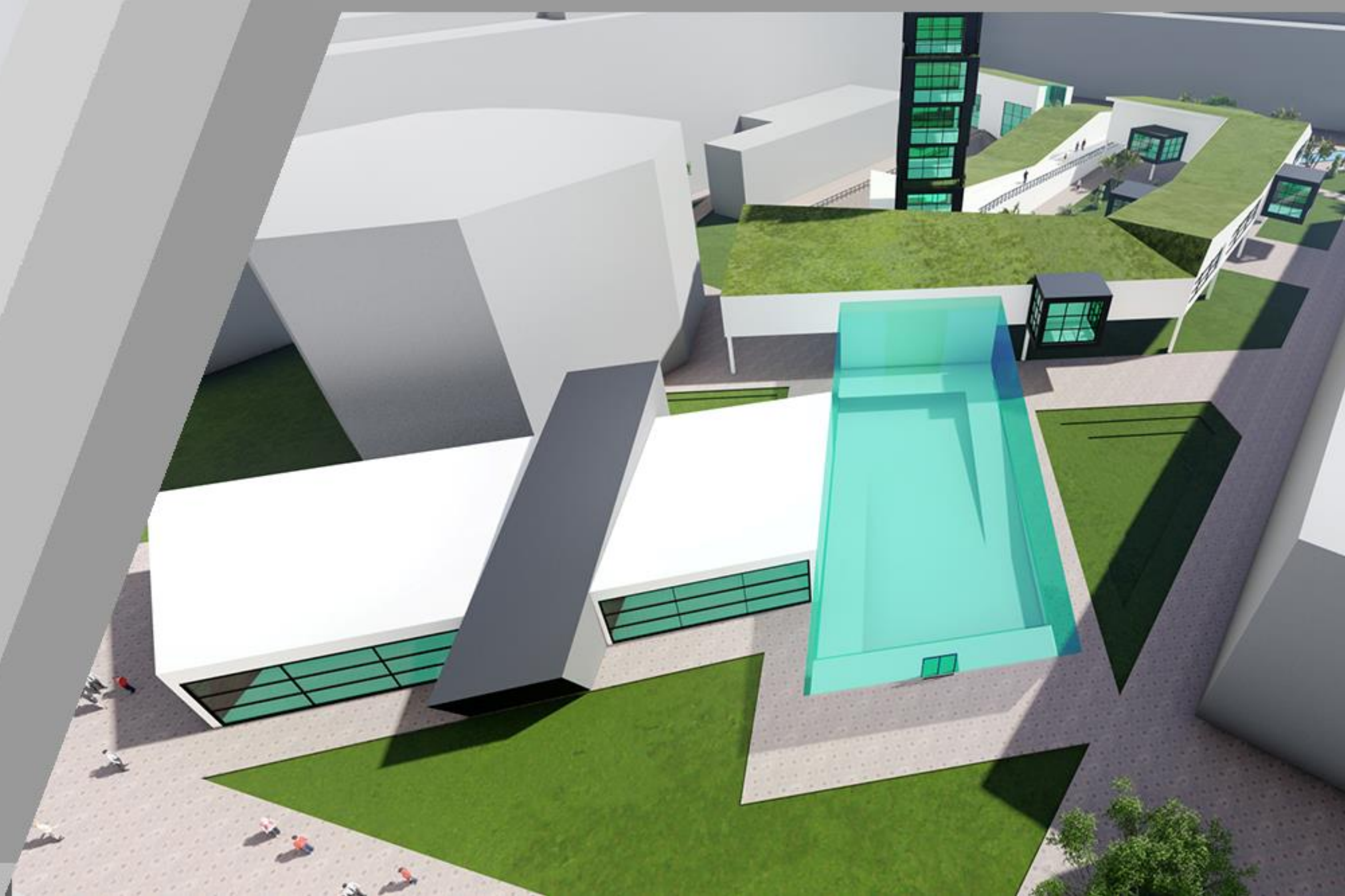
GREEN ROOF



Danube river, which contributes to the tourism of the city of Bratislava, passes through 10 countries and many cities, and is also Europe's second largest river. It is divided into many branches in terms of its characteristics and these branches are transferred to the main body of the river by wandering again and an integrity is achieved. It is in an area that contains many cultures, is active and has circulation.



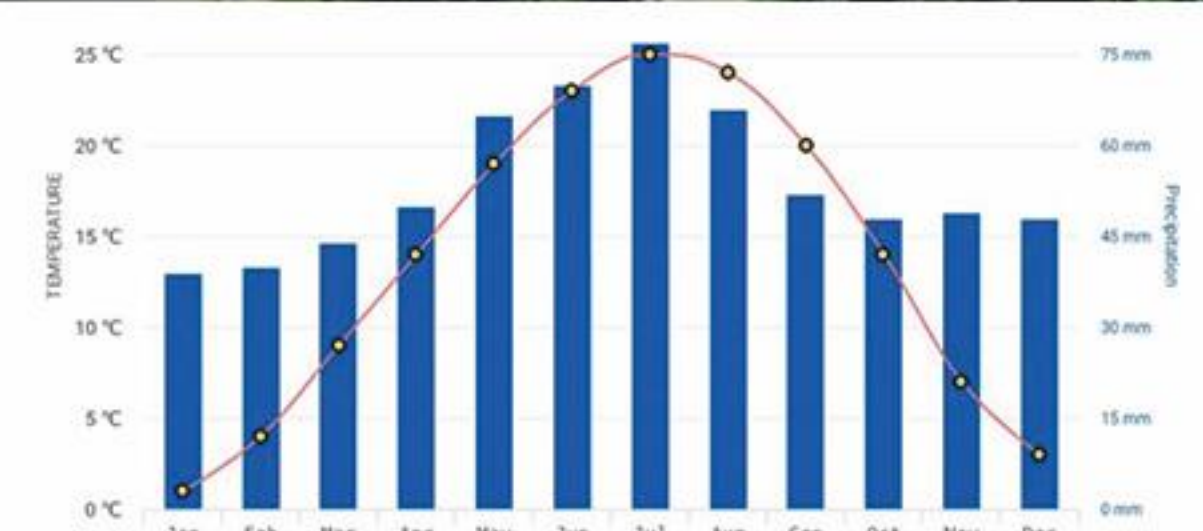
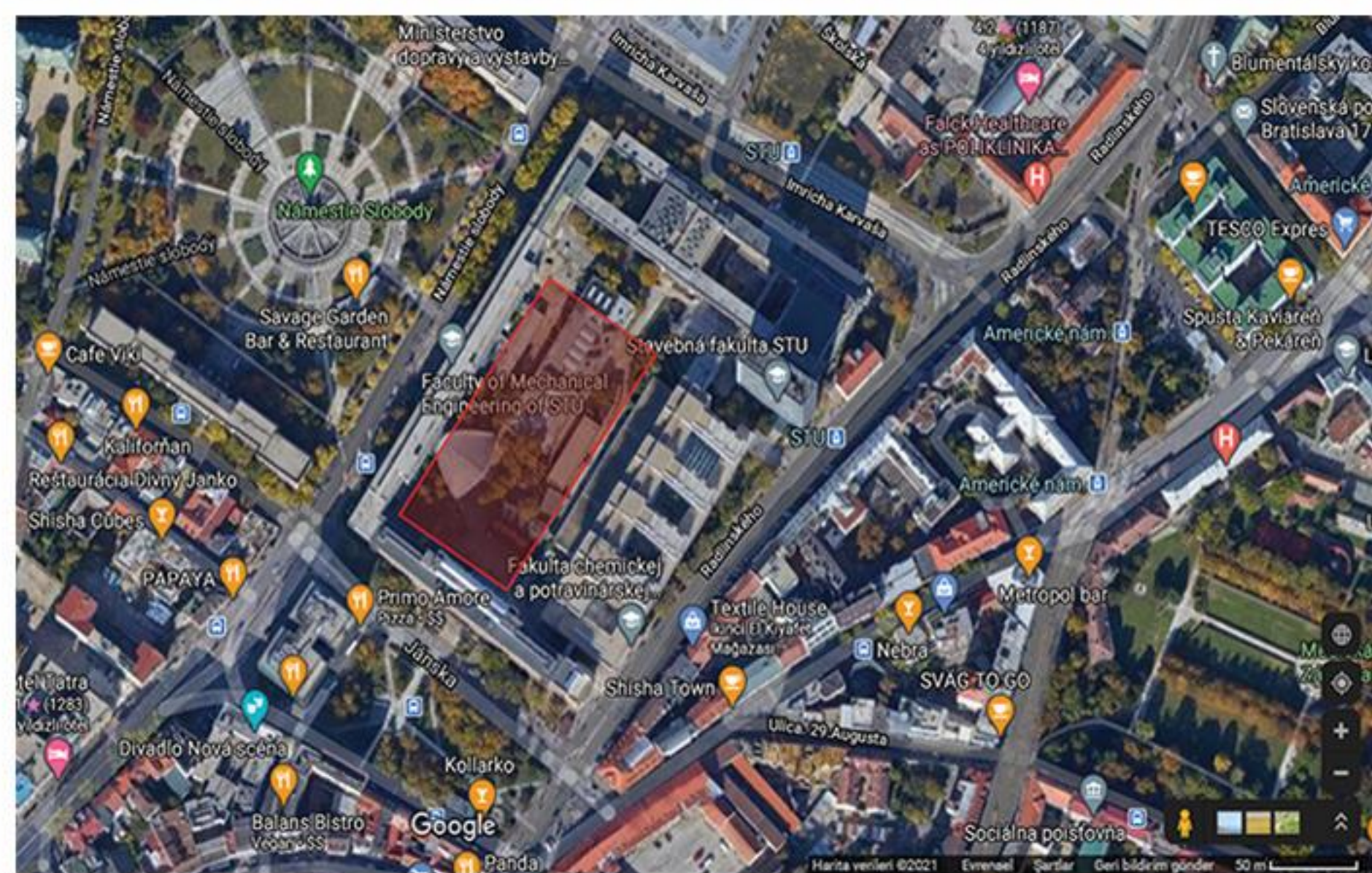
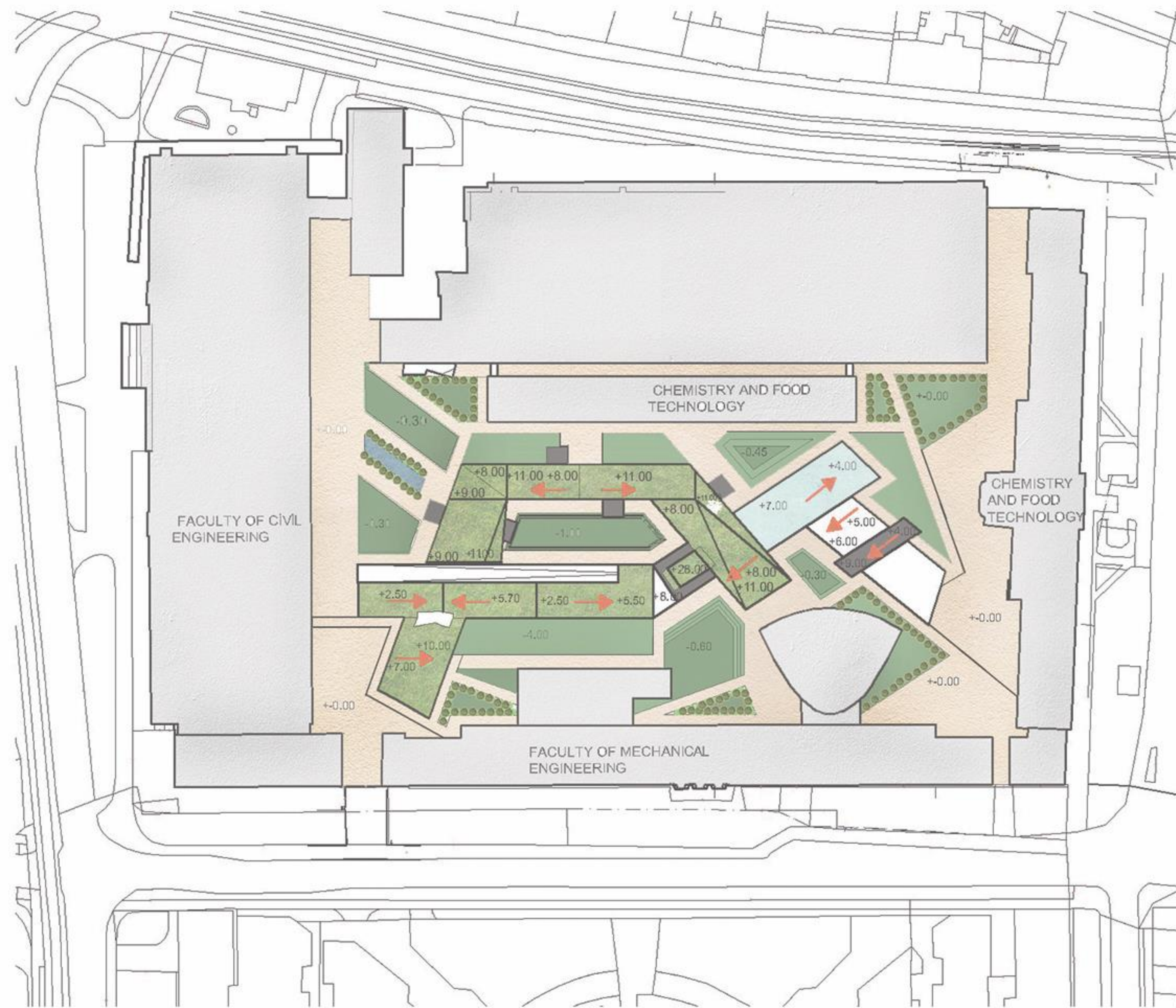
- CIRCULATION BETWEEN UNITS
- TRANSPARENCY FOR PUBLIC
- DYNAMISM OF THE LAND
- FLUDITY BETWEEN CULTURES



SITE ANALYSIS

PROGRAM

- Innovative research Center
- Presentation Center
- Library
- Study Rooms
- Multipurpose Space
- Exhibition area
- Cafe and restaurant
- Rectorate



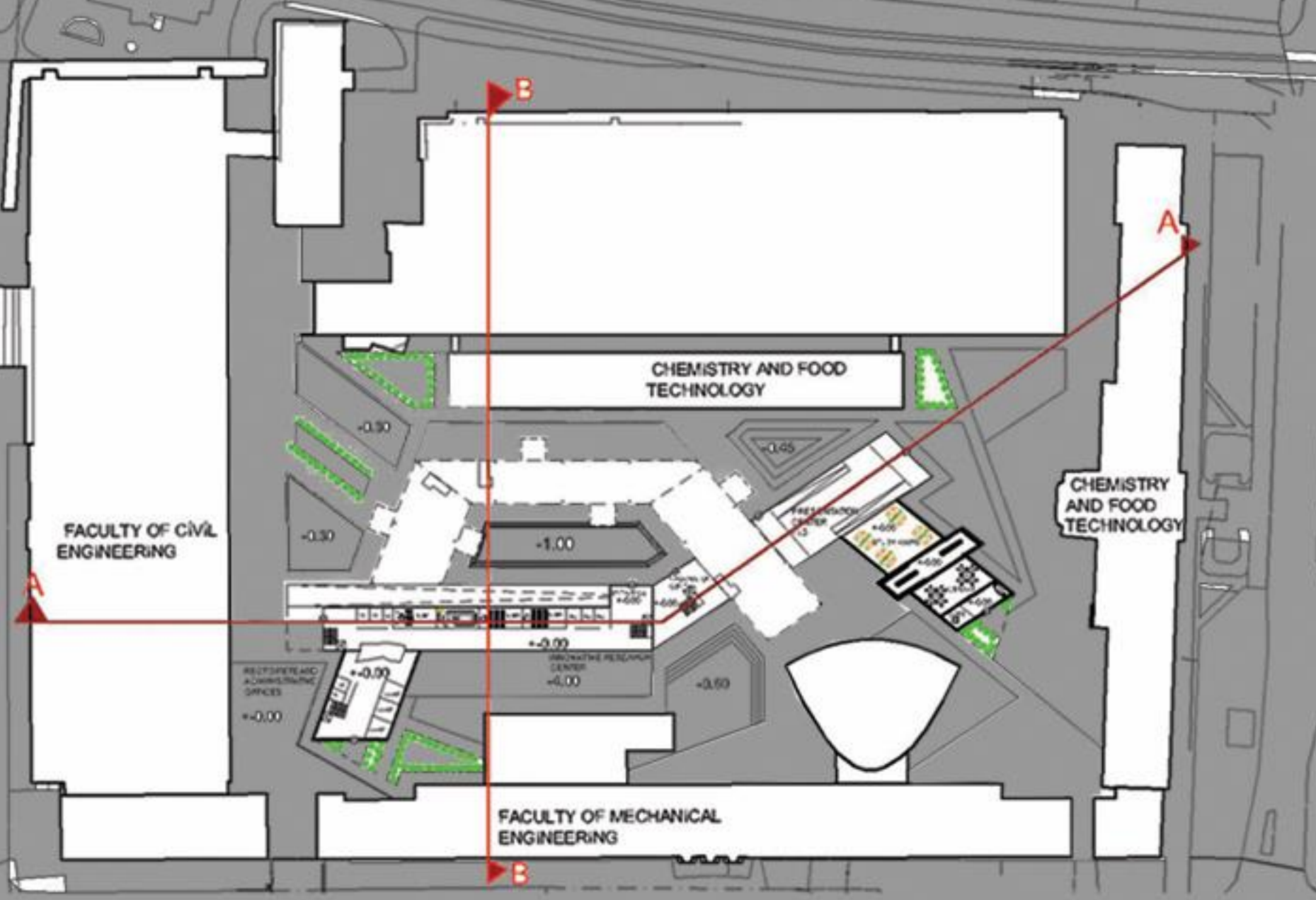
- S**
- It's near Freedom Square
 - It's an economically strong city
 - The faculty is close to the city center and attractions
 - There are bus and tram stops on all three sides of the faculty.
 - There are no transport problems
 - There are many restaurants near the faculty

- W**
- Since the design area is inside the faculty of courtyard, it will not be seen from the outside and may not attract the expected attention.

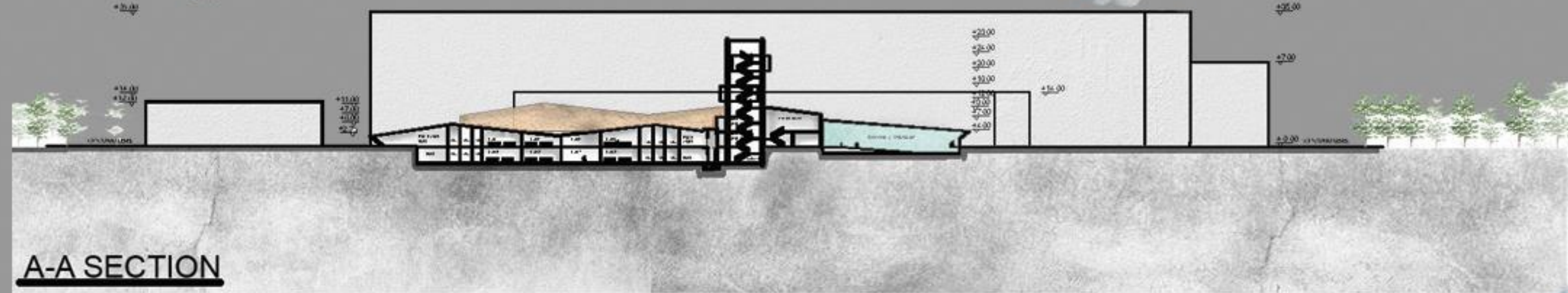
- O**
- There are lots of green spaces and trees in the courtyard of the faculty and around the faculty.
 - Courtyard is large so there is a lot area for design.

- T**
- The city of Bratislava gets a lot of rain, so this could affect the design.
 - Materials of faculty buildings are single variety
 - Circulation area is narrow by different entrances.

PLANS AND SECTIONS



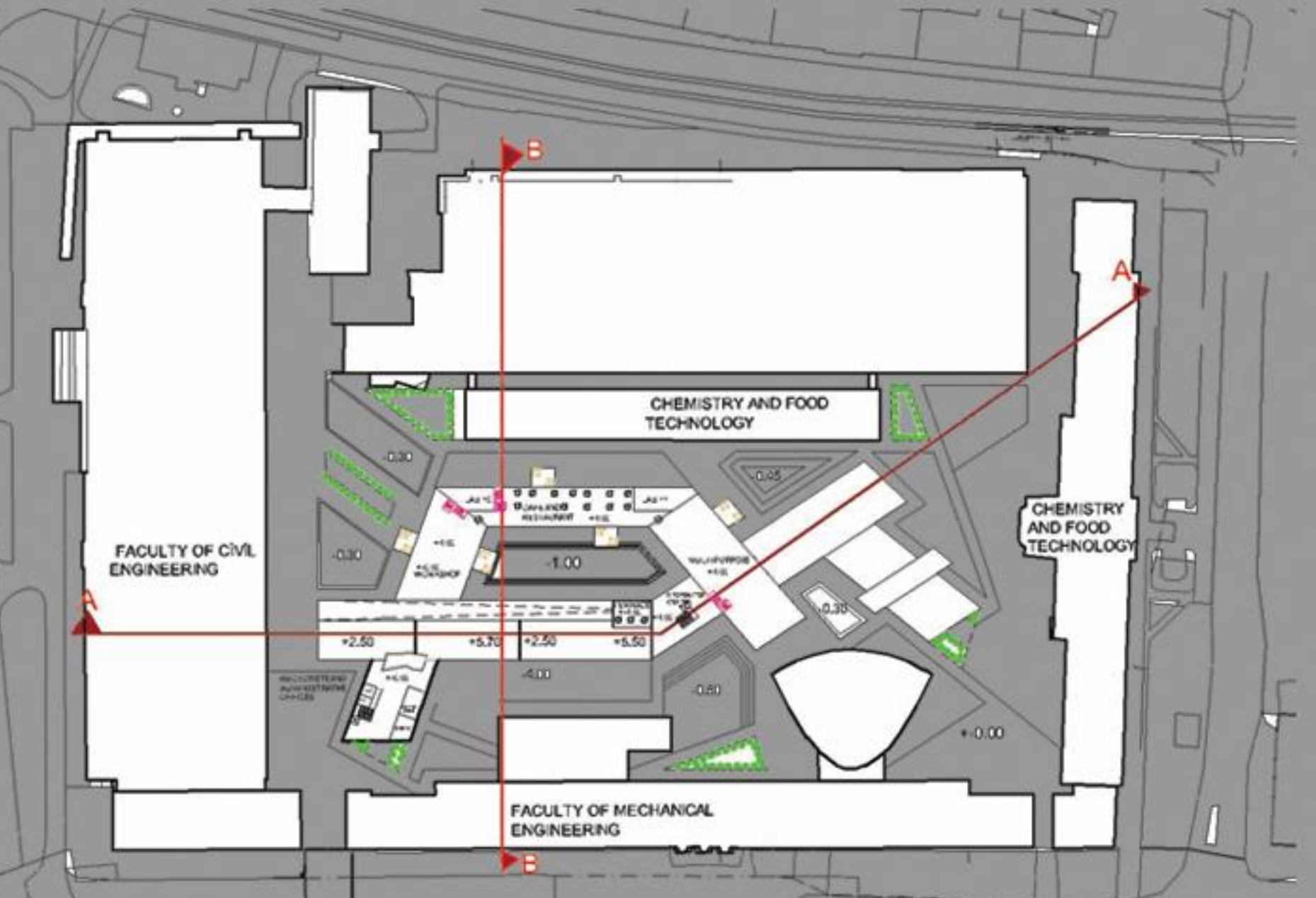
GROUND FLOOR



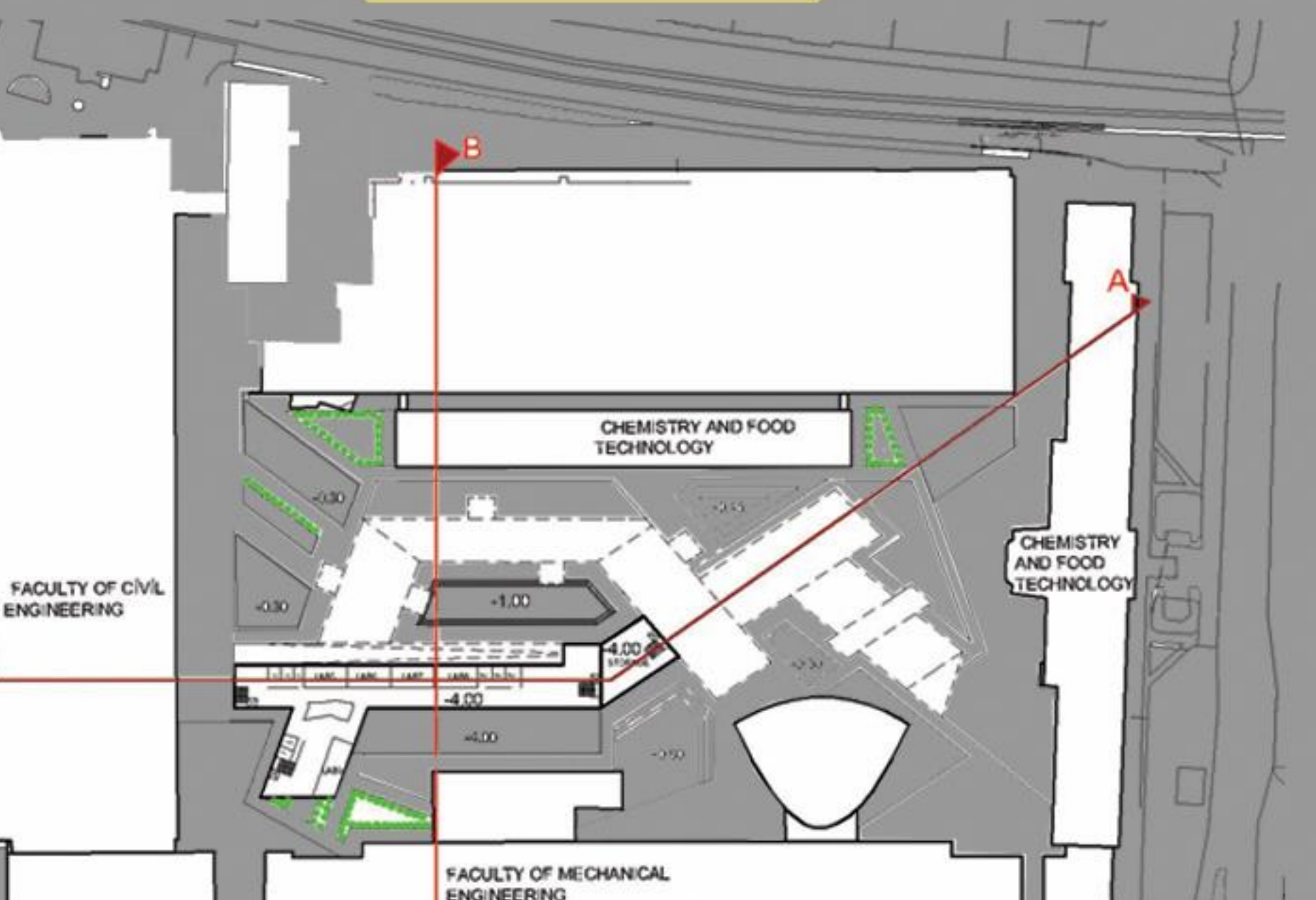
A-A SECTION



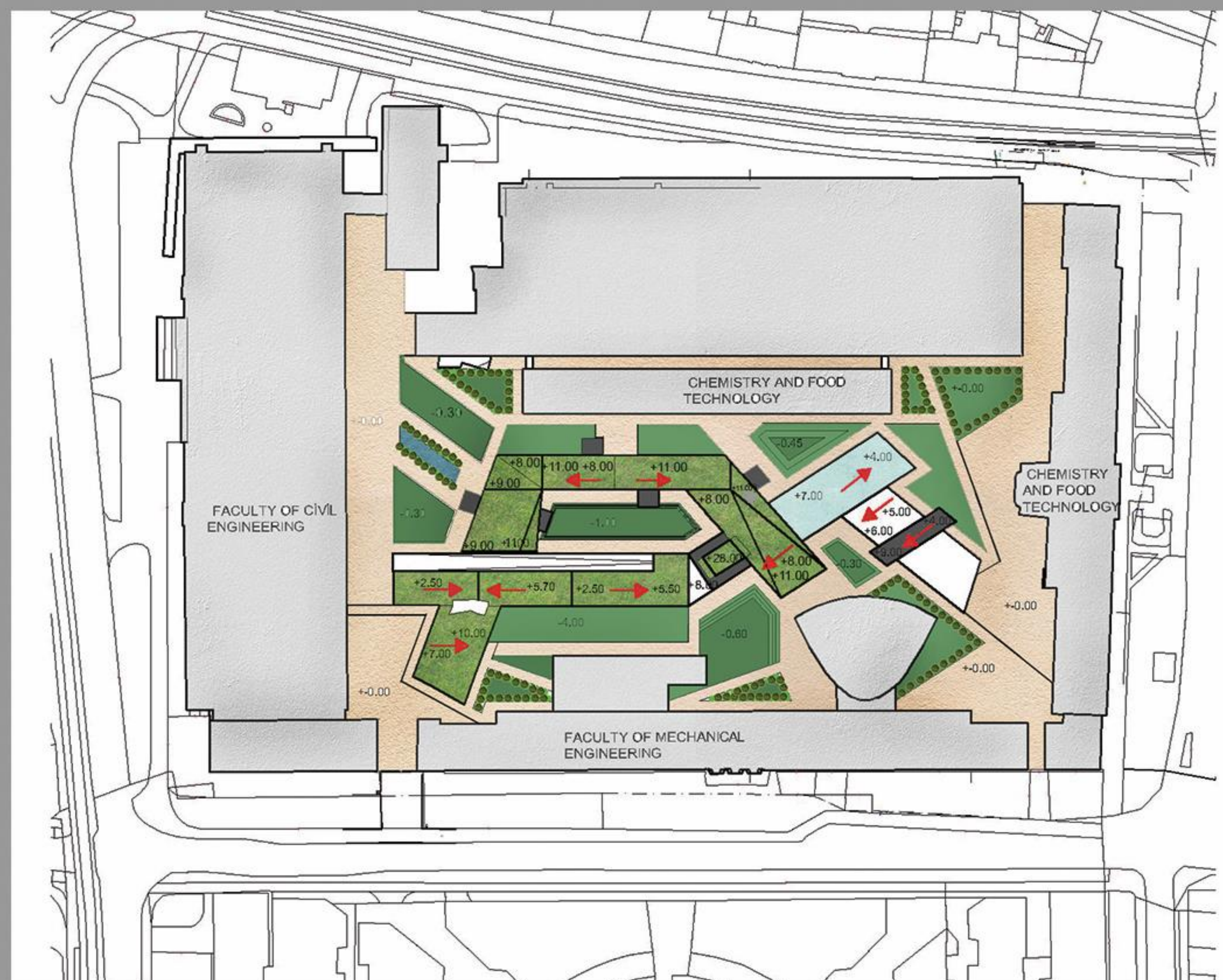
B-B SECTION



FIRST FLOOR



BASEMENT FLOOR



SITE PLAN



ELEVATIONS AND 3D



NORTH ELEVATIONS



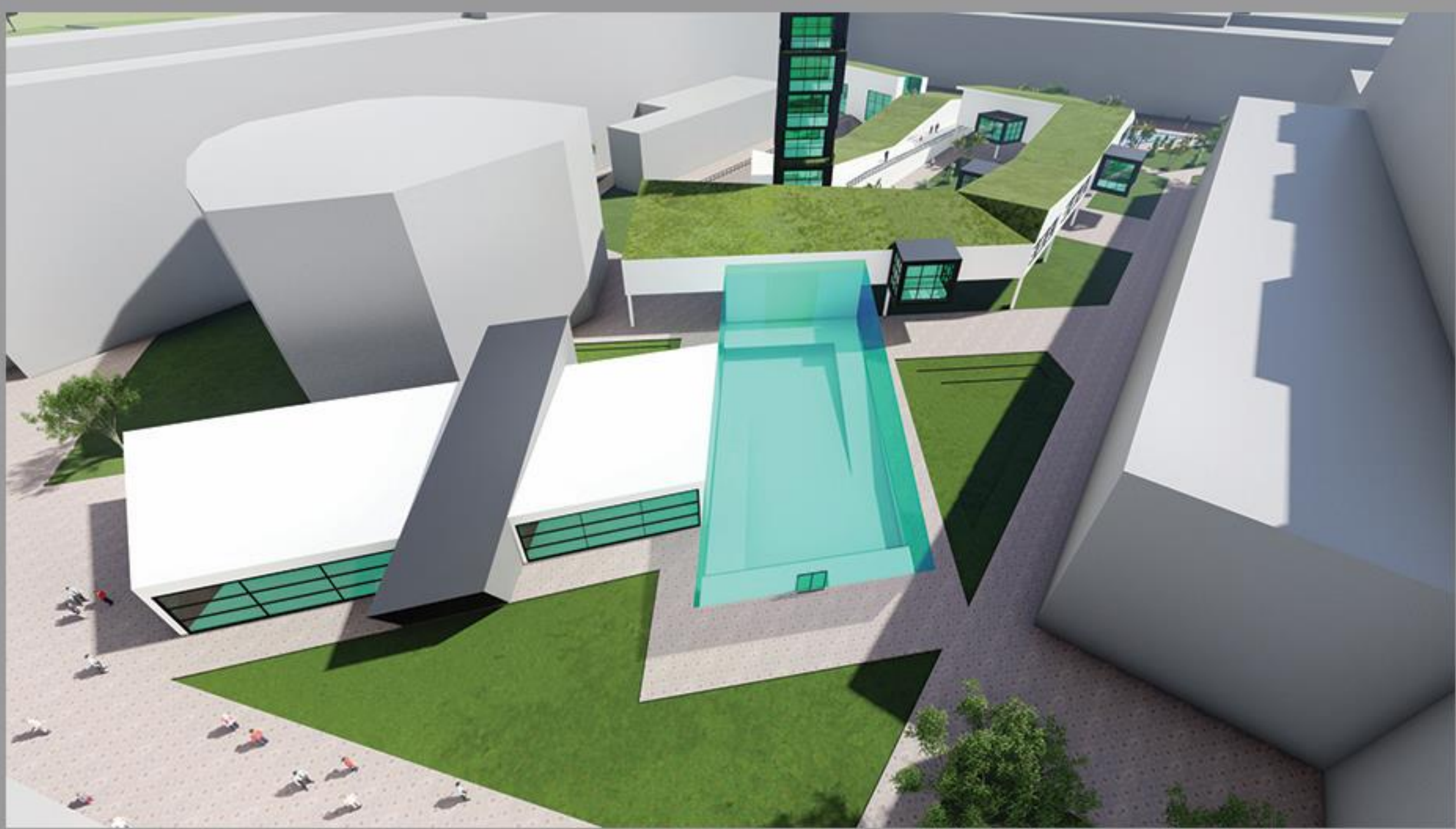
SOUTH ELEVATIONS



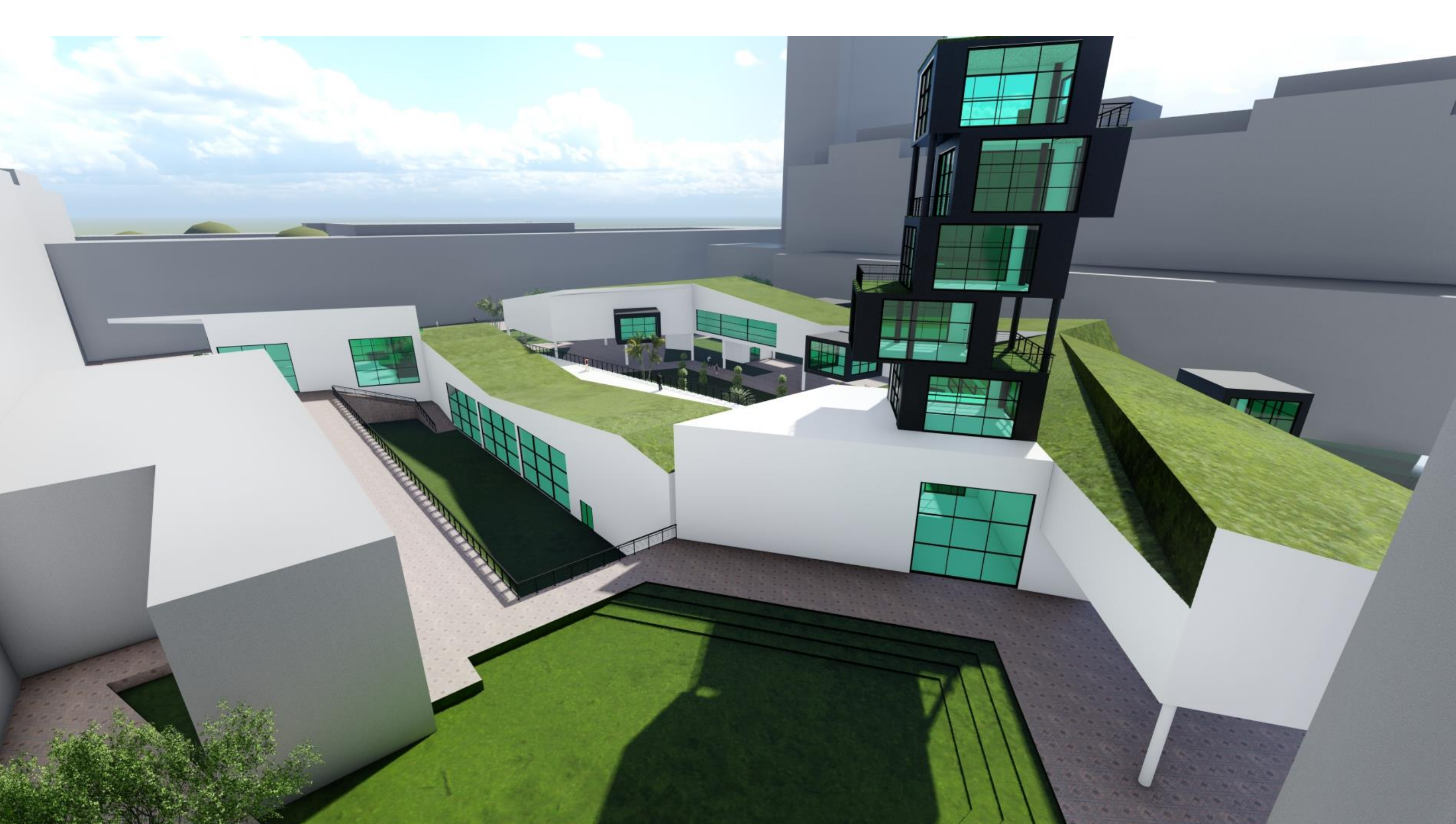
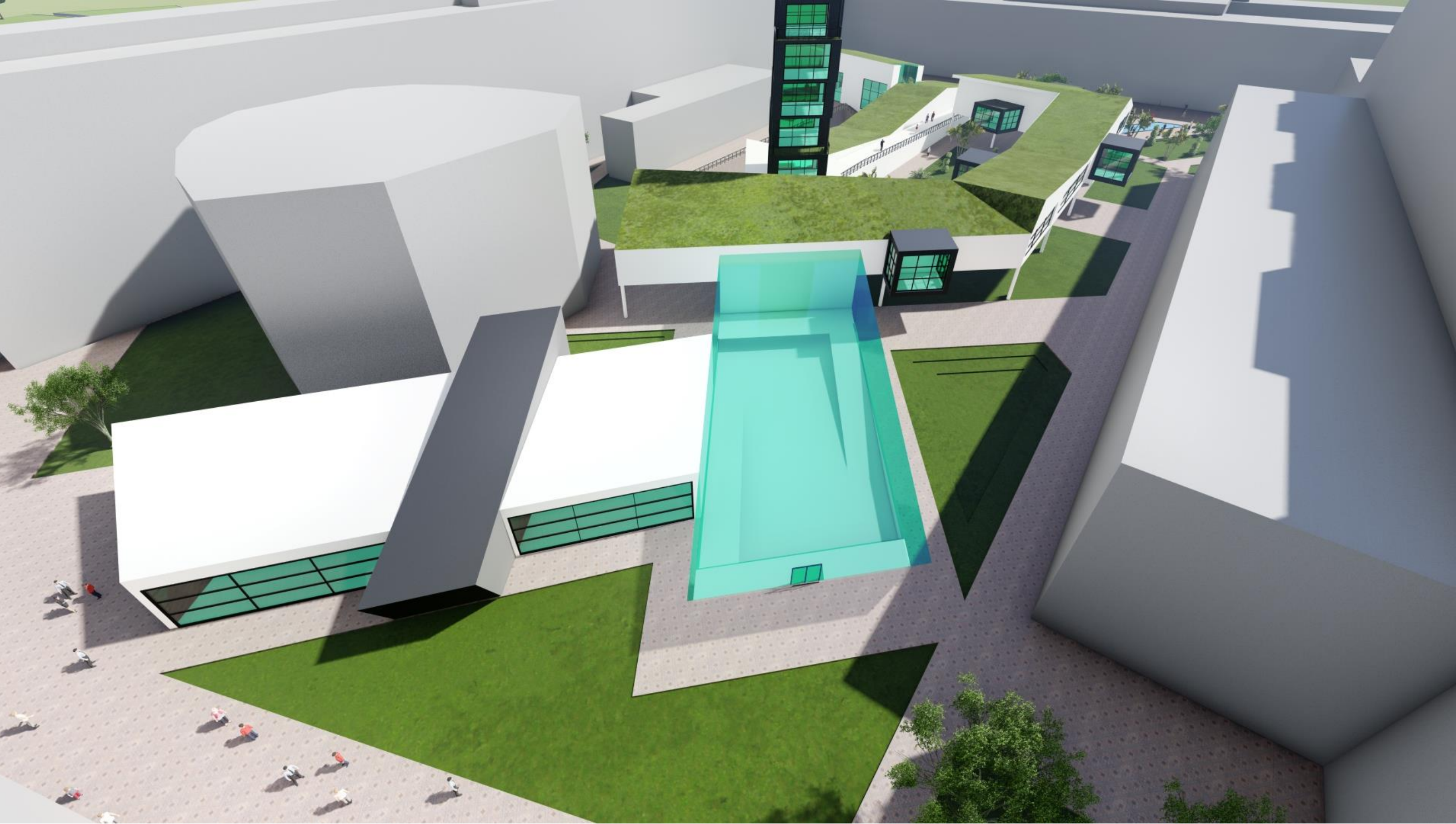
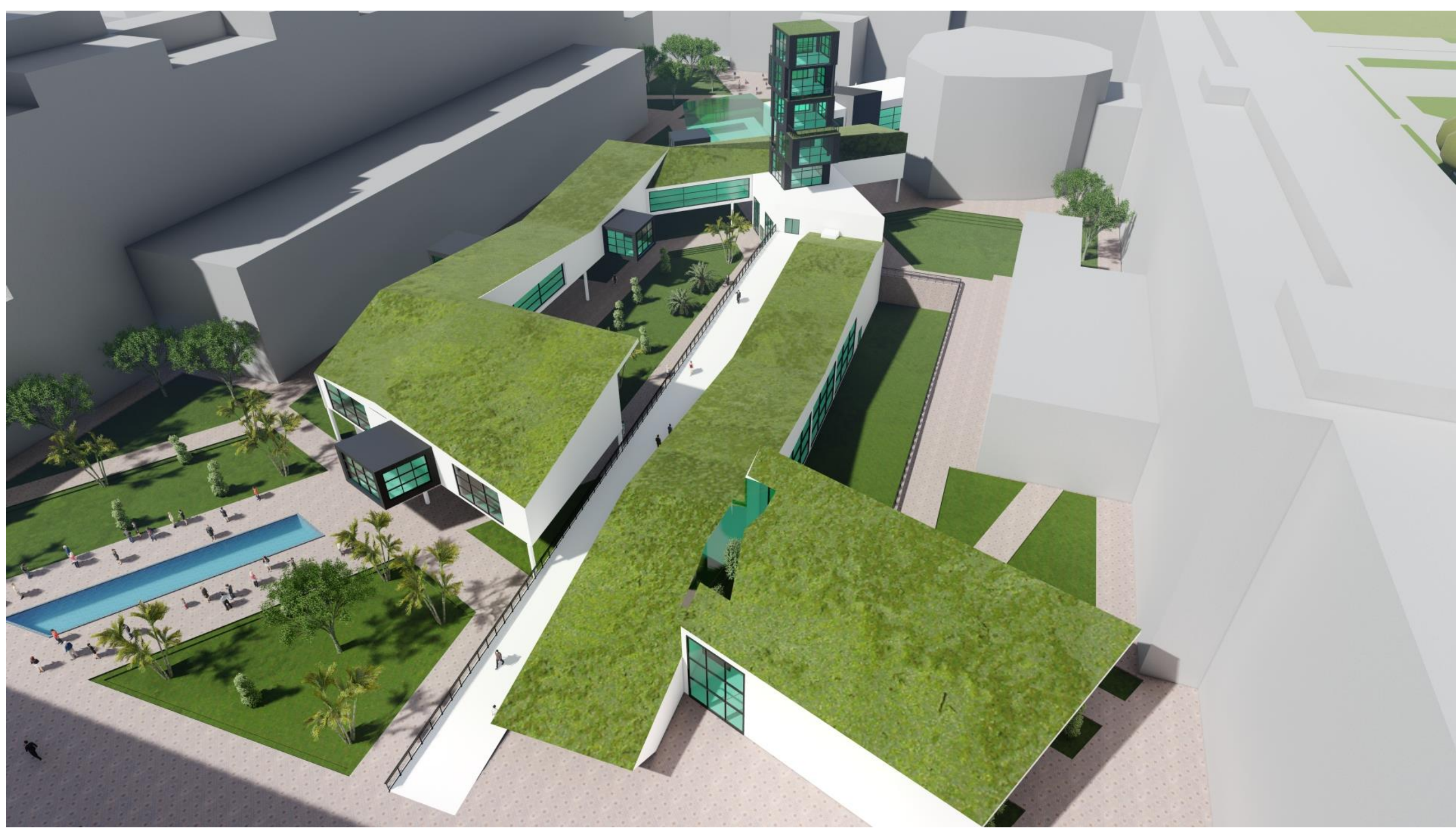
WEST ELEVATIONS

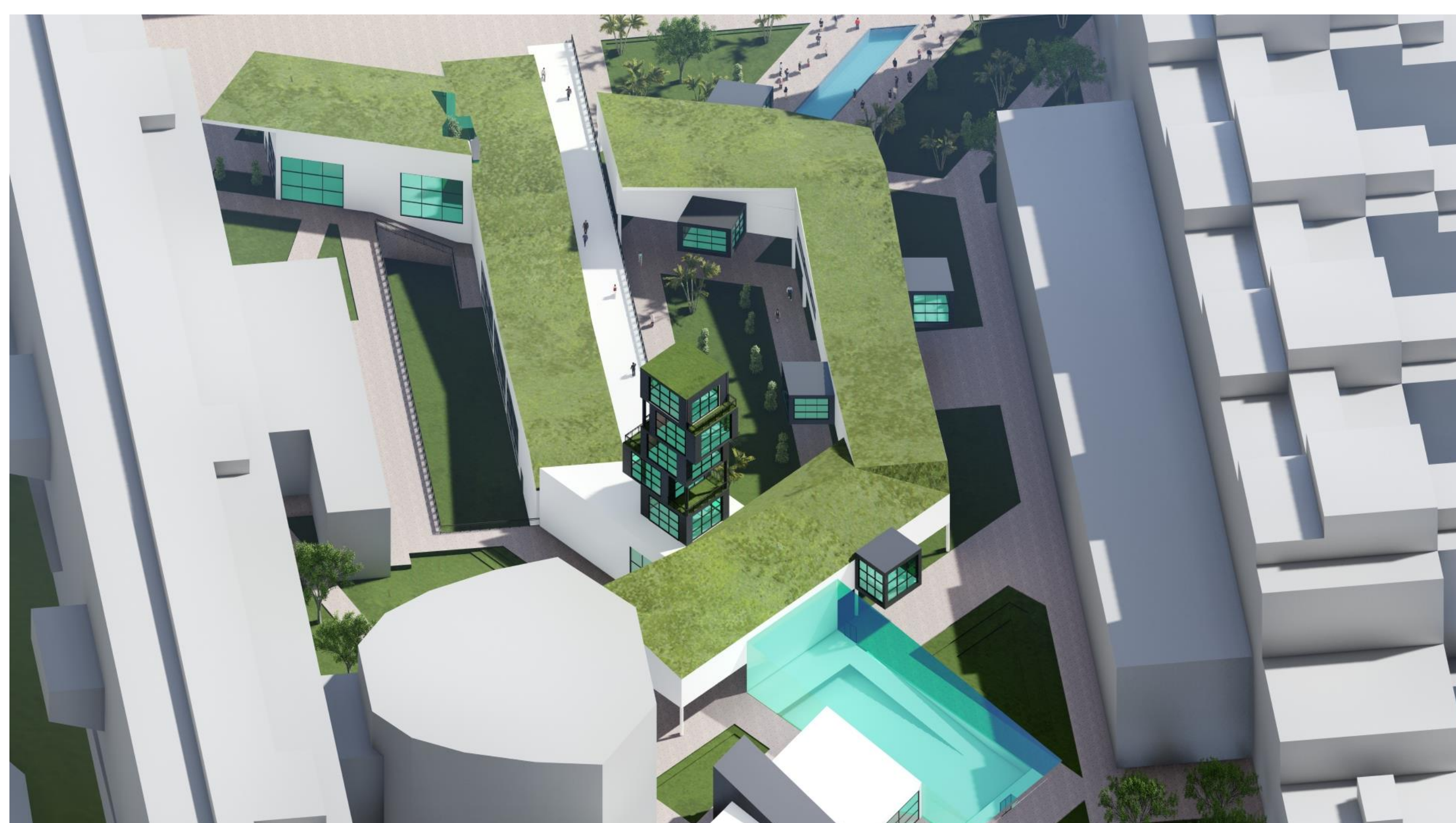
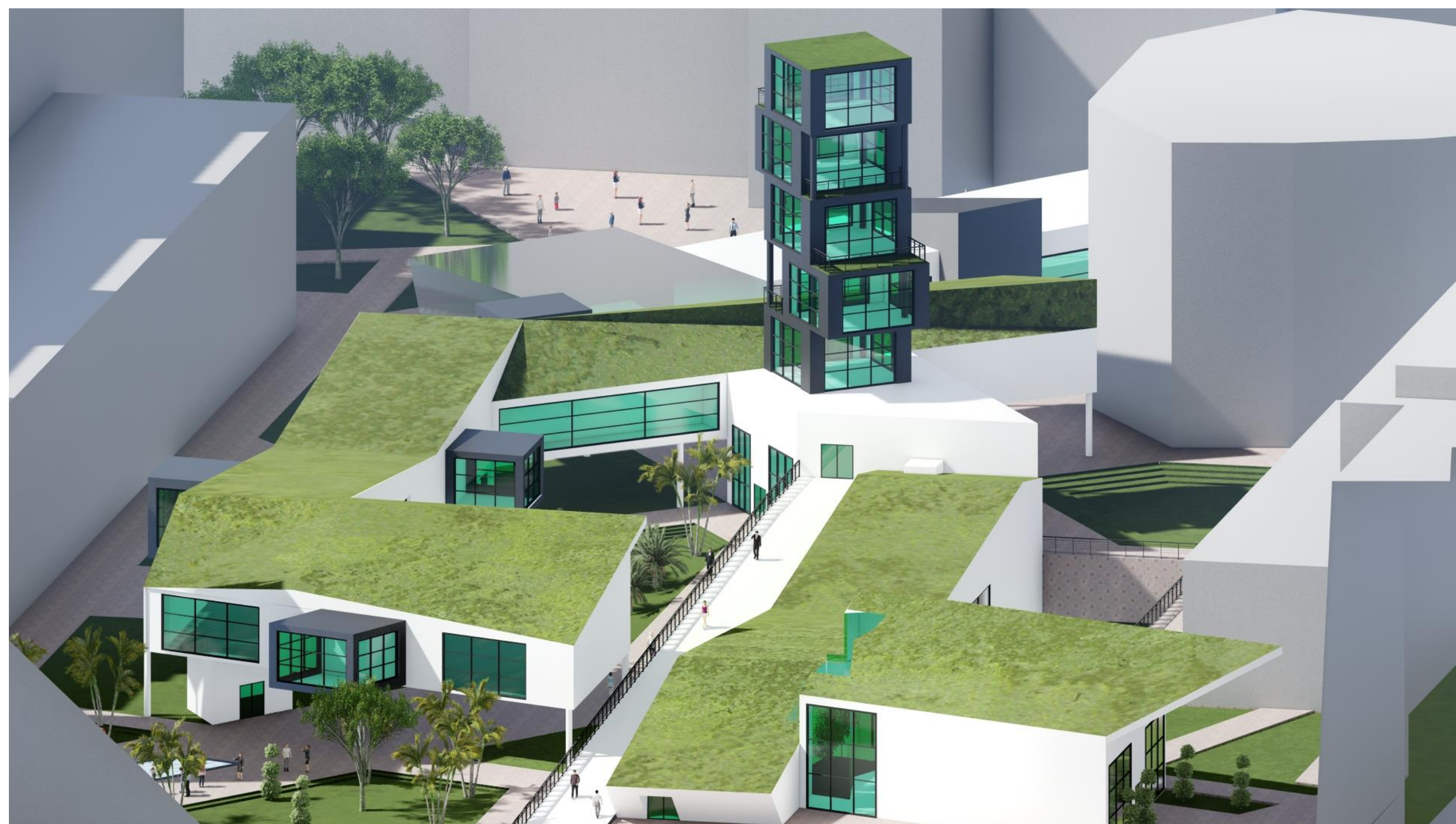


EAST ELEVATIONS

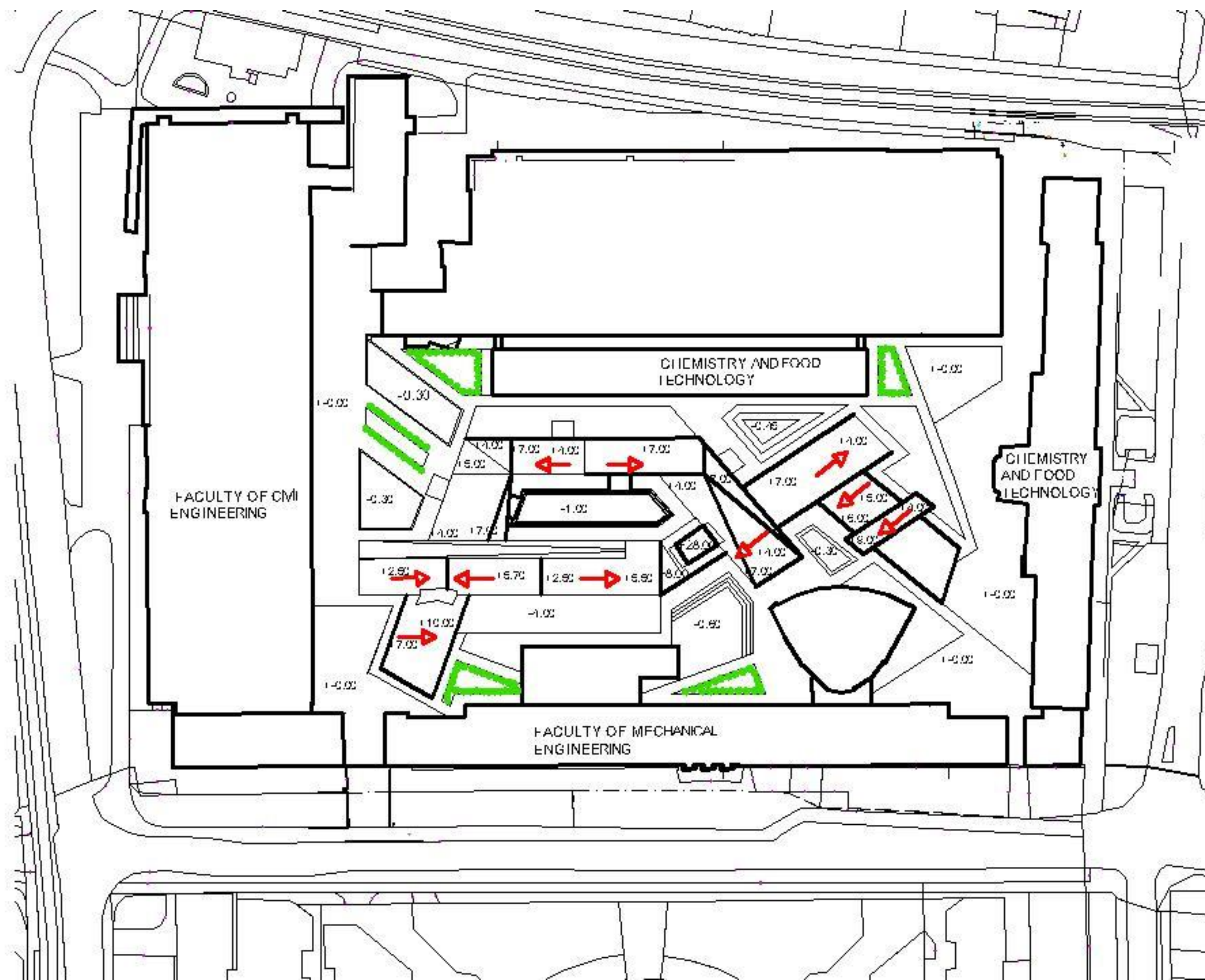
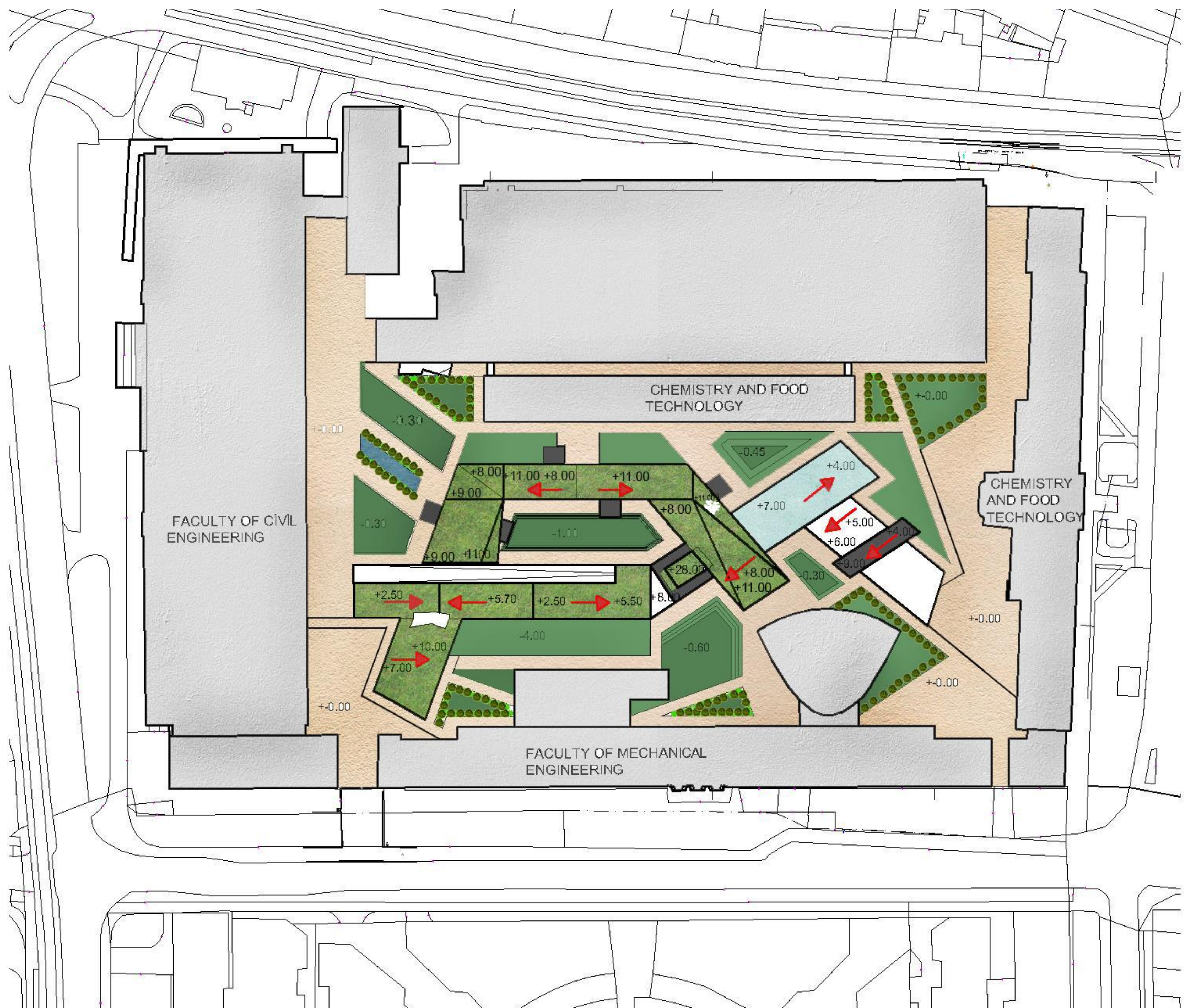


3D PHOTOS

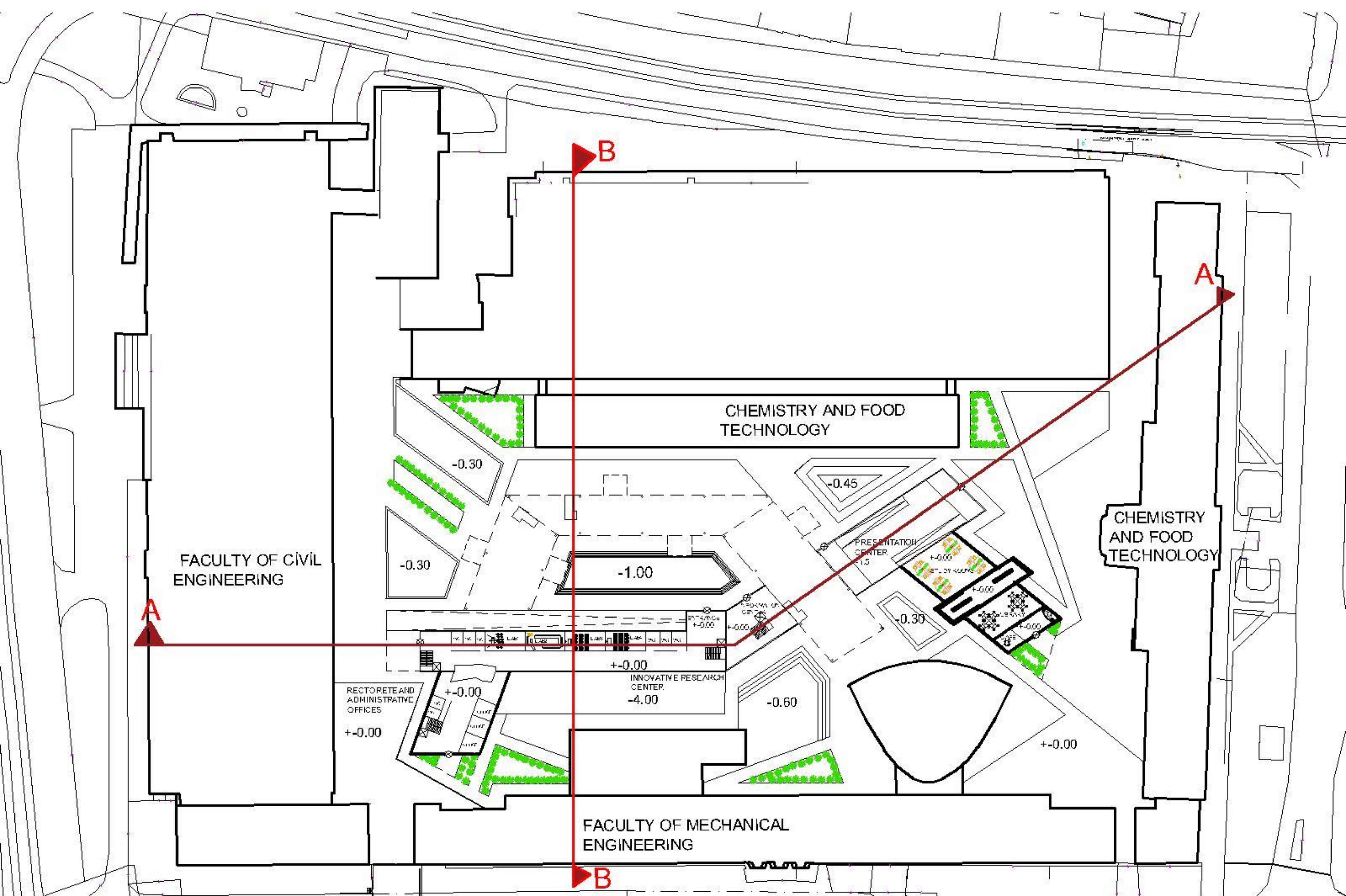




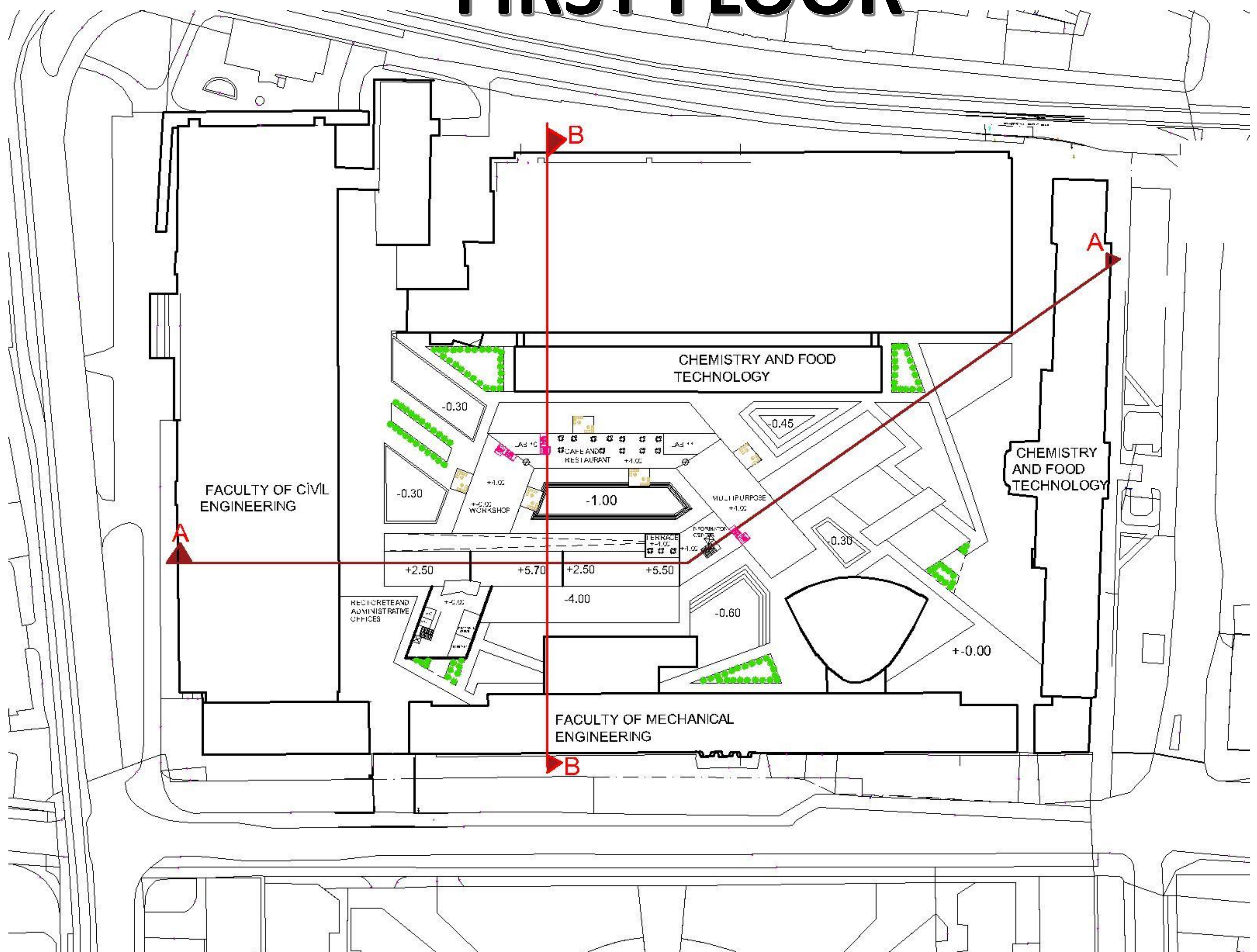
SITE PLAN



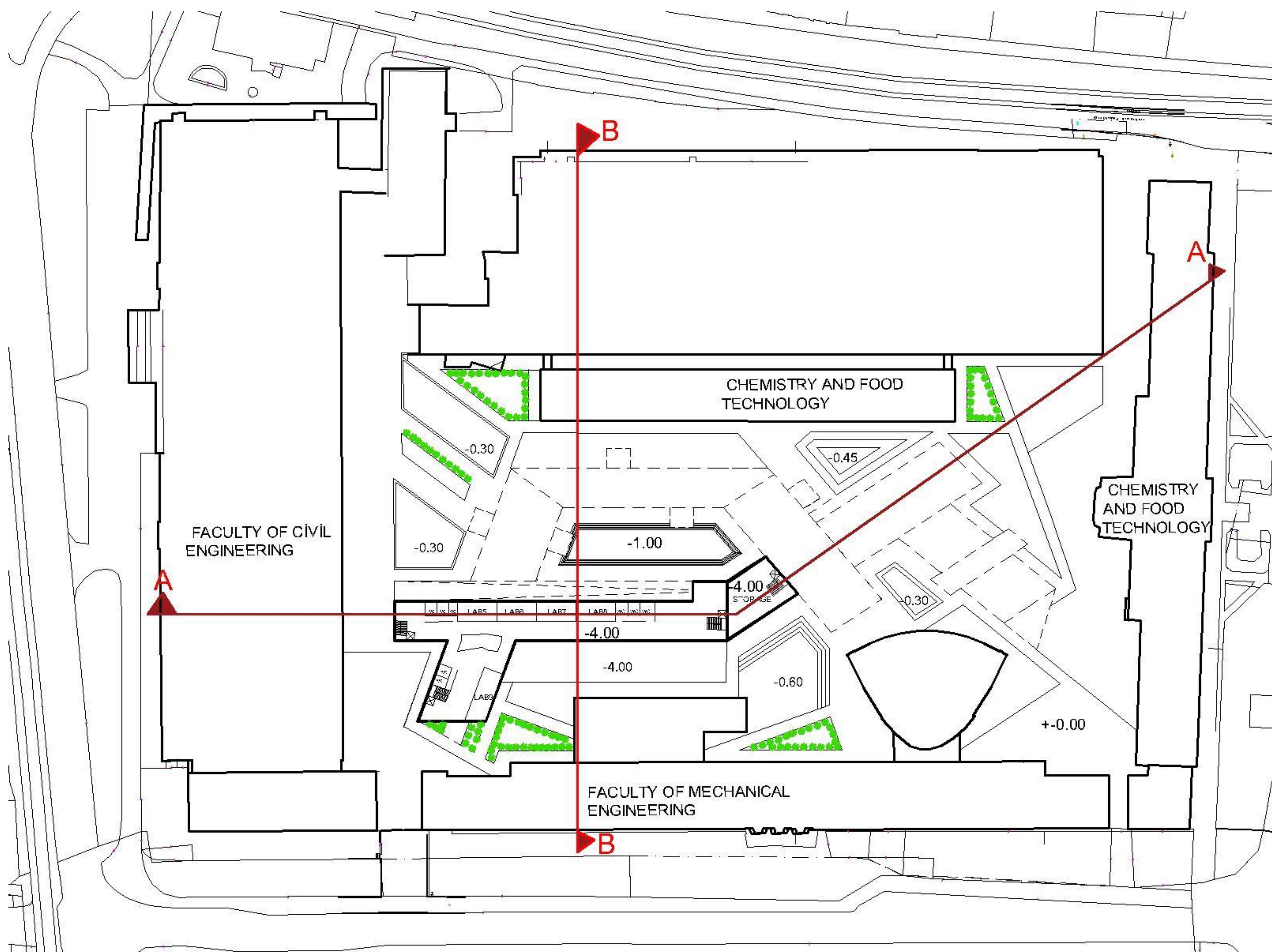
GROUND FLOOR



FIRST FLOOR



BASEMENT FLOOR



SECTIONS

