

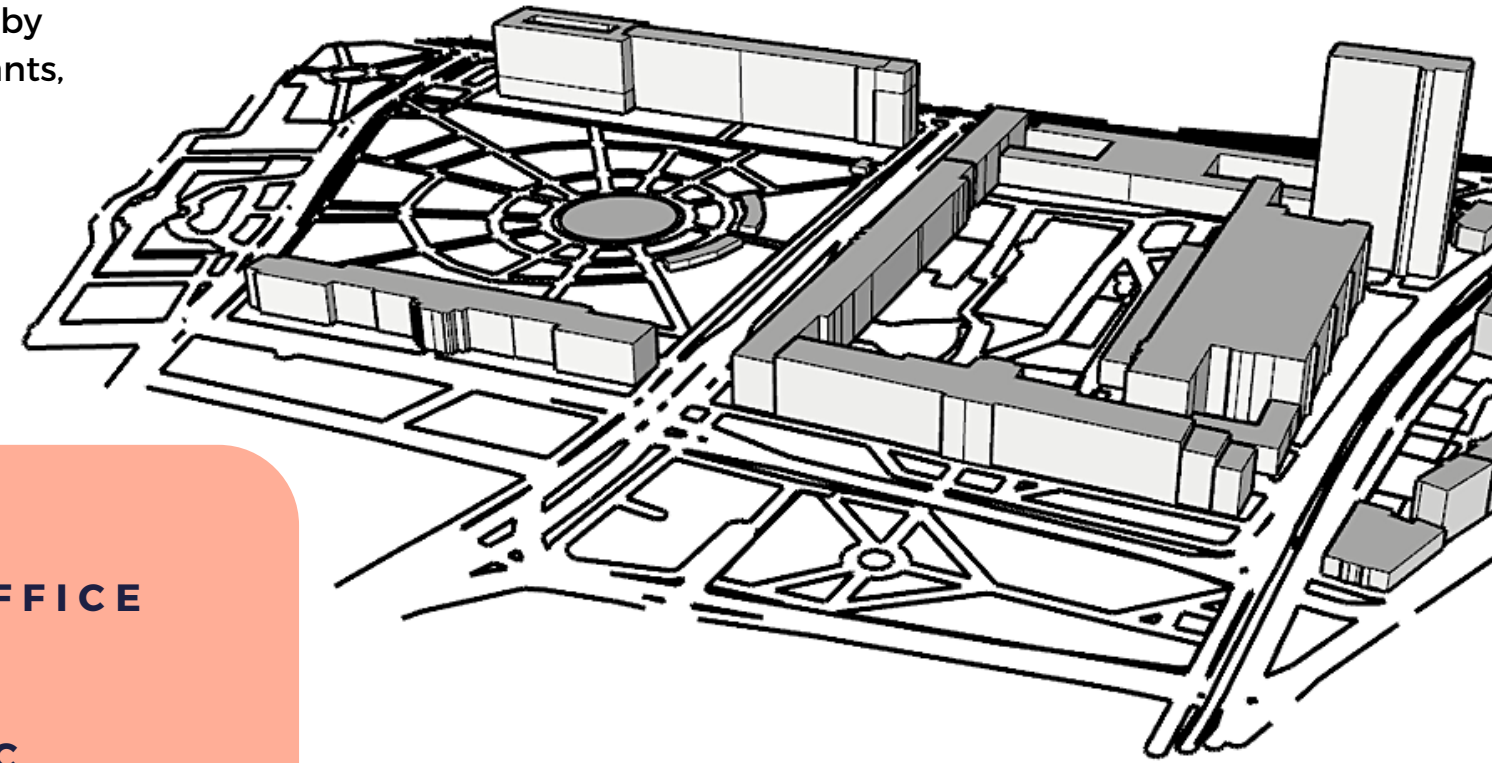
UNIFYING CENTER

STU BRATISLAVA

JENNIFER VALERIE-0206031910005

STU is a place for lectures which provides 7 main faculties, the land is surrounded by public facilities (parks, offices, restaurants, etc.)

Project : Conceptual design of the STU campus
 Location : Bratislava, Slovakia
 Dimensions : 112 m x 200 m
 Total Area : 22,400 m²



SPACE REQUIREMENT

PRESENTATION CENTER

RECTOR OFFICE

EXHIBITION & MULTIPURPOSE CENTER

STARUP CENTER & RESEARCH CENTER

LIBRARY & CLASSROOM

ADMINISTRATIVE OFFICE

WORKSHOP

LOBBY & PUBLIC FACILITY

TECHNICAL BACKGROUND

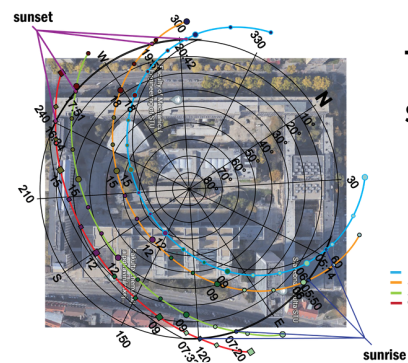
RESTAURAN / CAFE

COLOR SCHEME



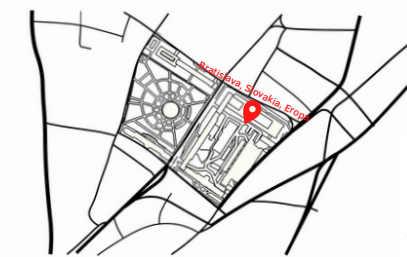
SITE INFORMATION

Sun Direction

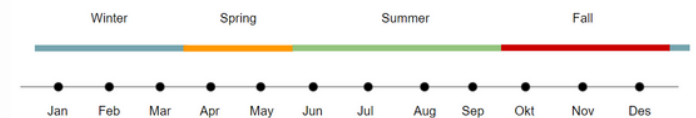


The sun rises in the southeast and sets in the west

Climate



Slovakia has a typical European climate where there are 4 seasons in certain months



Wind Direction



The wind moves from east to west with a maximum wind speed of 10 mph.

SITE VIEW



Slovakia Technical University



Faculty Chemical and Food Technology



Faculty Civil Engineering



Faculty Mechanical Engineering



Namestie Slobody

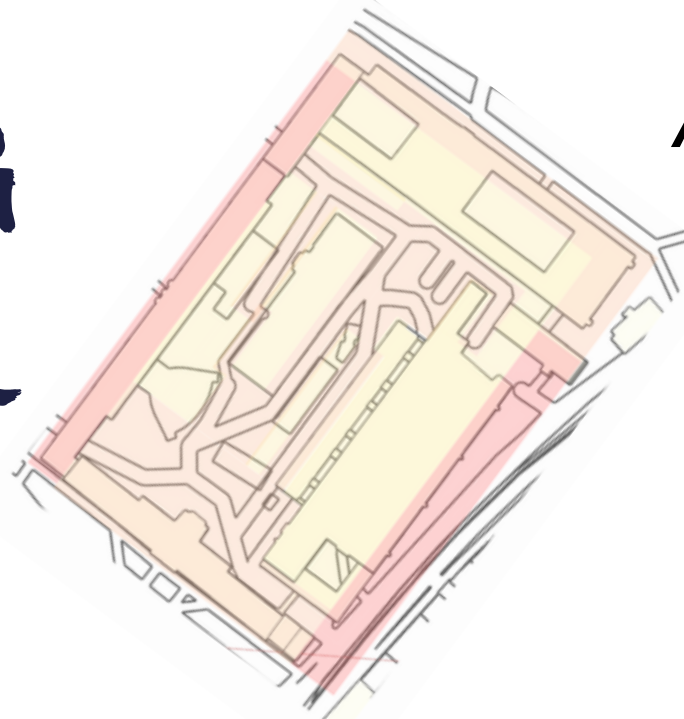


Faculty Chemical and Food Technology

UNIFYING CENTER

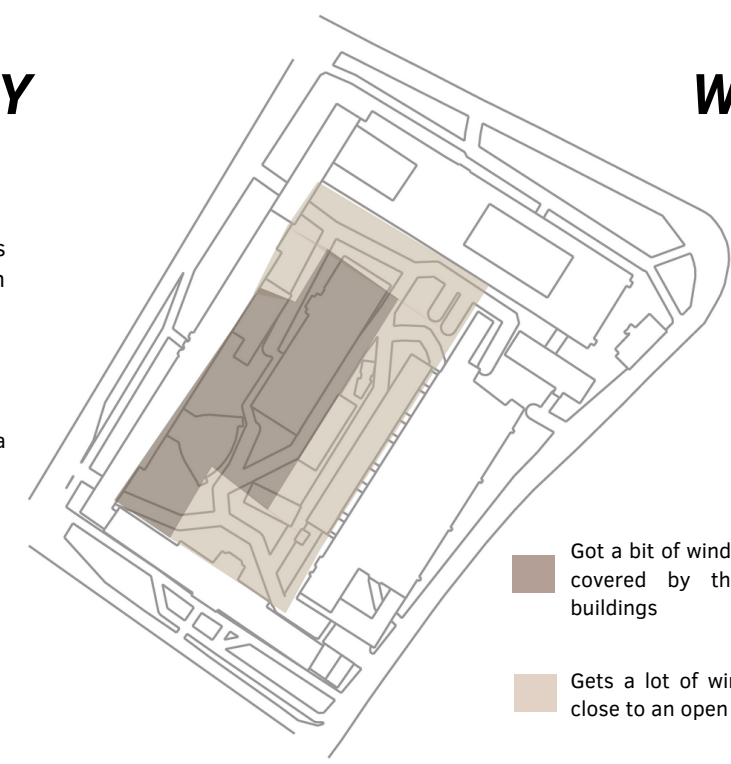
STU BRATISLAVA

SITE ANALYSIS



AIR QUALITY

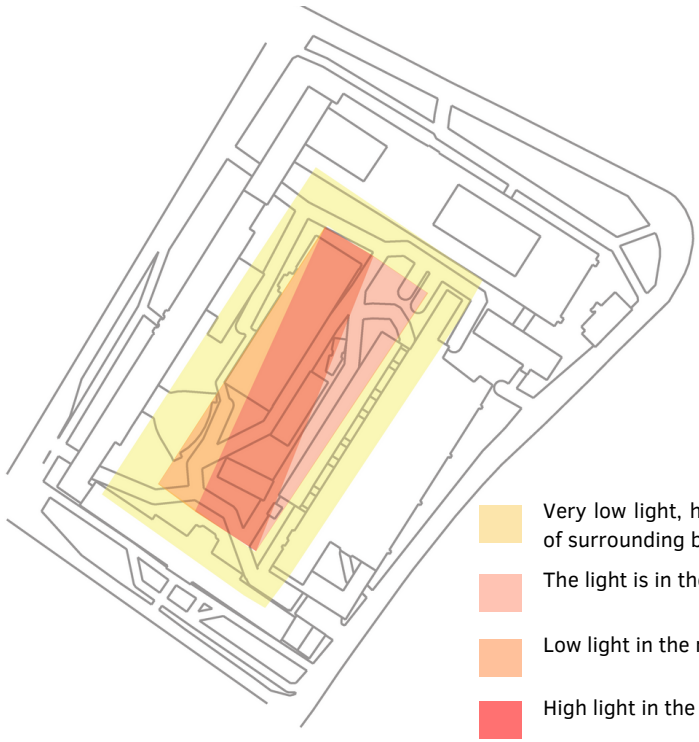
- UNHEALTHY**
Often passed by vehicles because it is close to the main road
- MODERATE**
Rarely passed because it is a campus road area



WIND

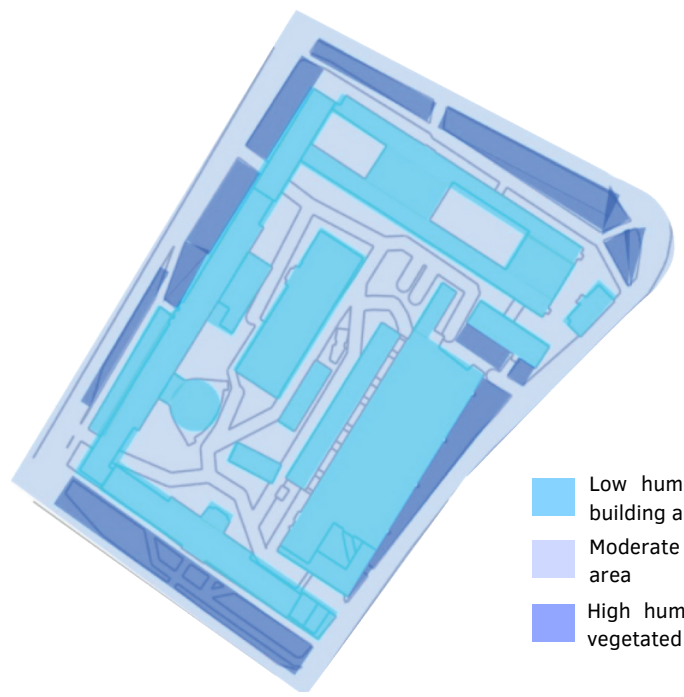
- Got a bit of wind because it was covered by the surrounding buildings
- Gets a lot of wind because it's close to an open area

NATURAL LIGHTING



- Very low light, hit by reflections of surrounding buildings
- The light is in the afternoon sun
- Low light in the morning sun
- High light in the afternoon sun

HUMIDITY



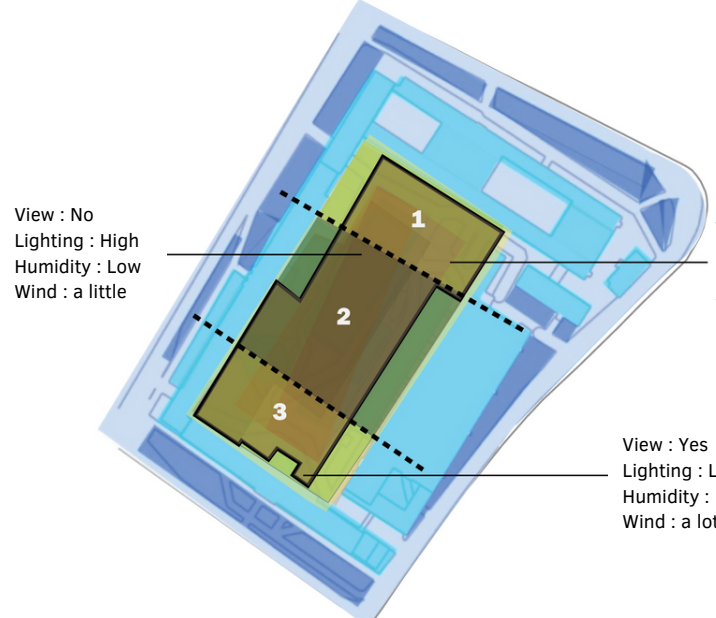
- Low humidity because it is a building area
- Moderate humidity in the road area
- High humidity because it is a vegetated area

VIEW



- Good view, still visible from the inside out or the outside in
- The view is not good, because it is blocked by the front and rear buildings

SUPERIMPOSE



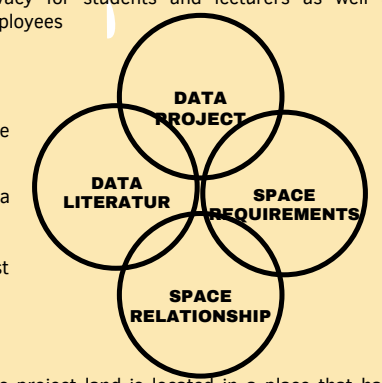
View : No
Lighting : High
Humidity : Low
Wind : a little

View : Yes
Lighting : Moderate
Humidity : Moderate
Wind : a lot

View : Yes
Lighting : Low
Humidity : Moderate
Wind : a lot

PROBLEM DEFINITION

- Includes rooms that have a function and are needed
- There is an underground basement under the building
- Designing an attractive campus center
- Apart from being a public place, there is a place of privacy for students and lecturers as well as other employees



- For underground basement set to be able to accommodate many vehicles.
- The sizes of the rooms already have a predetermined maximum size maximal
- The size of the room and so on must match the European size data ukuran

- Every room needs lighting and air quality that must be considered
- Arrangement of furniture and tools in an orderly and in accordance with the function and required
- Design a room that has an easy level of maintenance

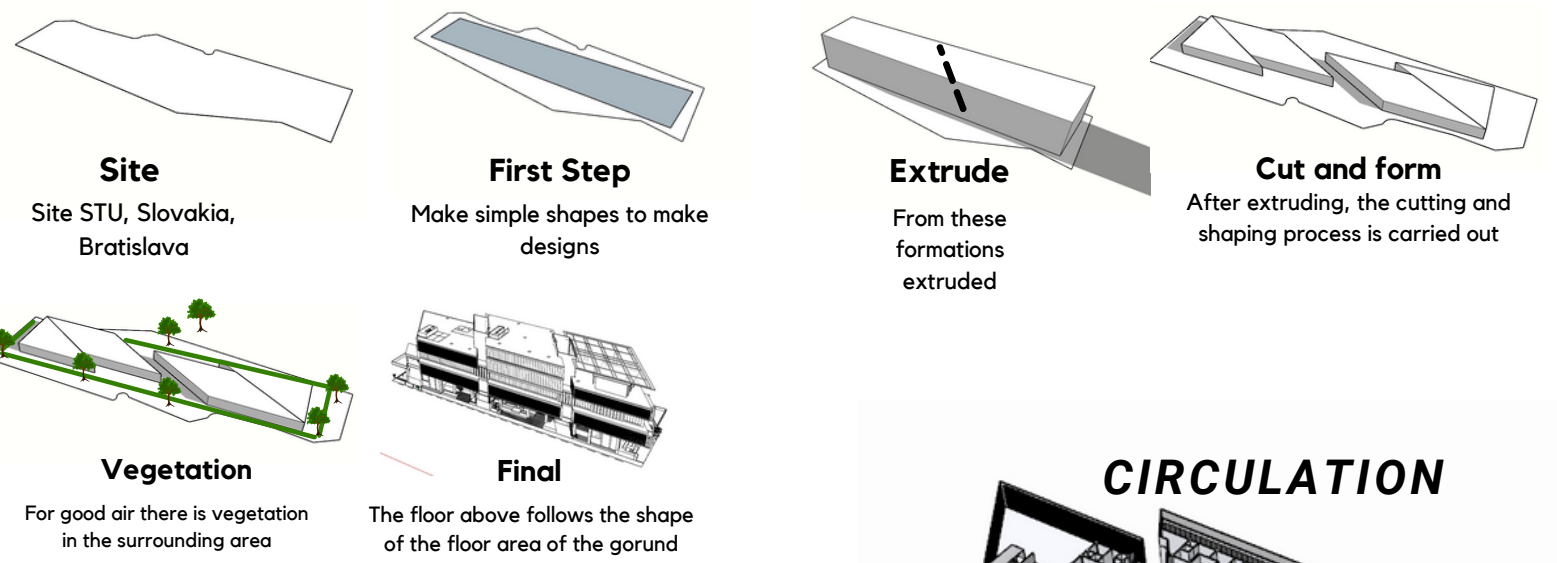
- This project land is located in a place that has a high public area.
- There are faculty buildings around the grounds
- For general areas, it is placed on the outside / on the floor that is easily accessible
- For rooms that should only be reached by insiders or non-publics, they should be placed on different floors for more privacy

MAIN PROBLEM

How to design a university or place of study with collaboration with the public and have good open space areas and can support a good teaching and learning process



SPACE & MASS



SUSTAINABLE DESIGN

Known as green building, sustainable design in buildings can improve a person's quality of life and has the advantage of being energy efficient

CONTEMPORER STYLE

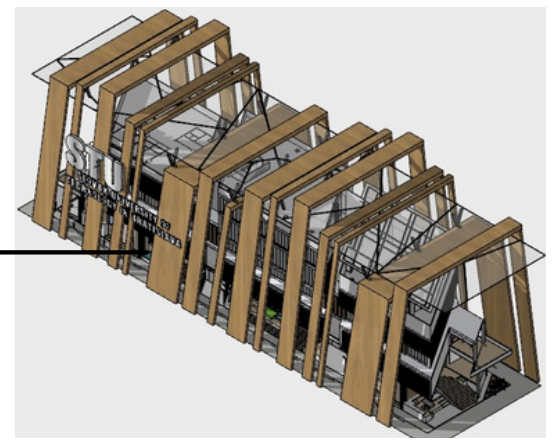
It is a contemporary building style and is a conventional style that will develop along with the development of the architectural world

CROSSPATHWAY

Is a concept that supports the separation of buildings from one building to another which is equipped with connecting lines



Having a high and low building cover symbolizes that there are differences in terms of ethnicity, culture, etc., still being able to learn together in one building

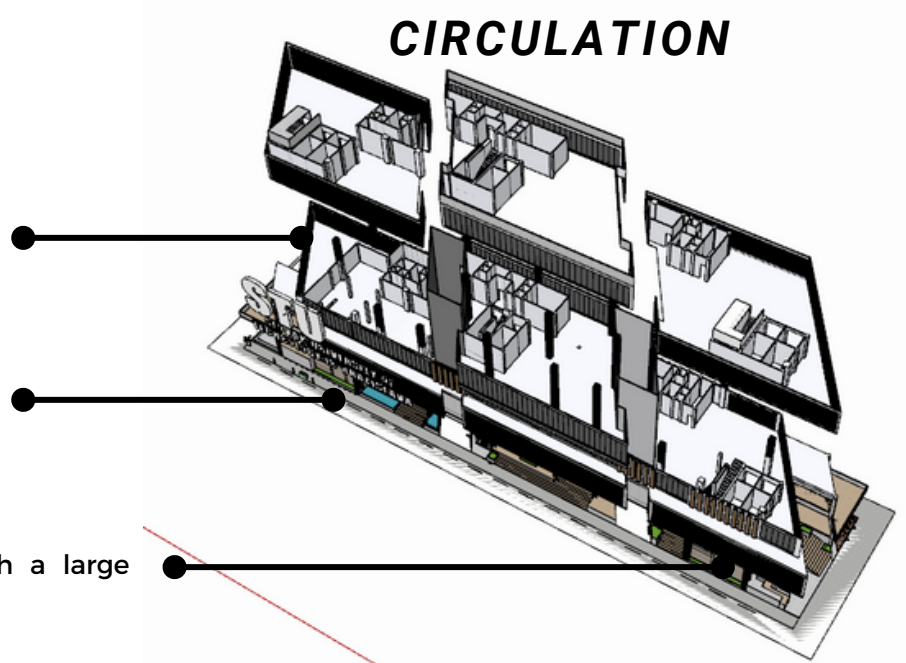


The cover, which is tilted at the feet, symbolizes that school life cannot run smoothly and vertically. Of course, there will be many waves that will be endured, so this cover symbolizes the courage to support a burden.

There is an Access facility that can be used to change floors

Each floor has a maximum arrangement of space to support good circulation in the building

Has many entrances equipped with a large lobby area





UNIFYING CENTER

STU BRATISLAVA

INTERIOR

BIOPHILIC DESIGN

The concept of biophilic design where this concept concerns nature and also living things, especially humans where this concept prioritizes the closeness of humans and nature in this modern era. In addition, to be more relaxed and healthy.

MINIMALIST DESIGN

Having a good arrangement of furniture but not dense, or it can be said that there is not much furniture in a room so that the room looks neat by minimizing ornaments and decorations

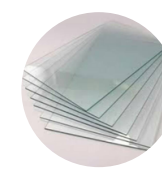
MATERIAL



ceramic
color white / granite /
marble



Solid Wood
Natural



Transparent
Glass



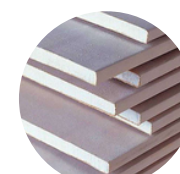
Vertical
Garden



Carpet
Tiles

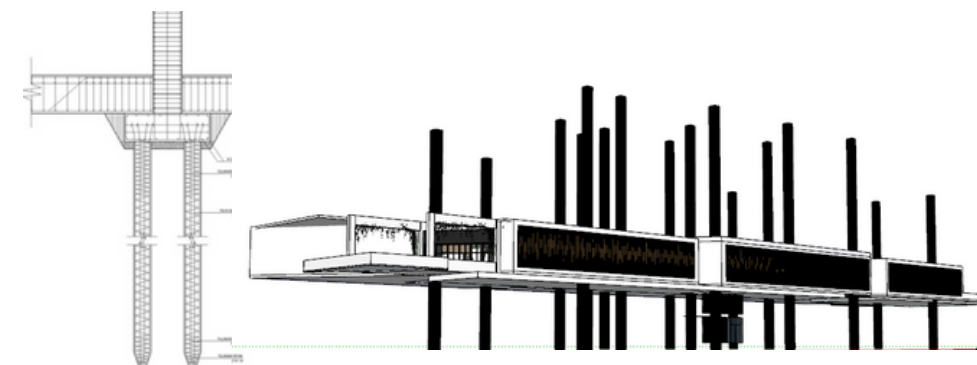


Concrete



Gypsum

BUILDING TECH

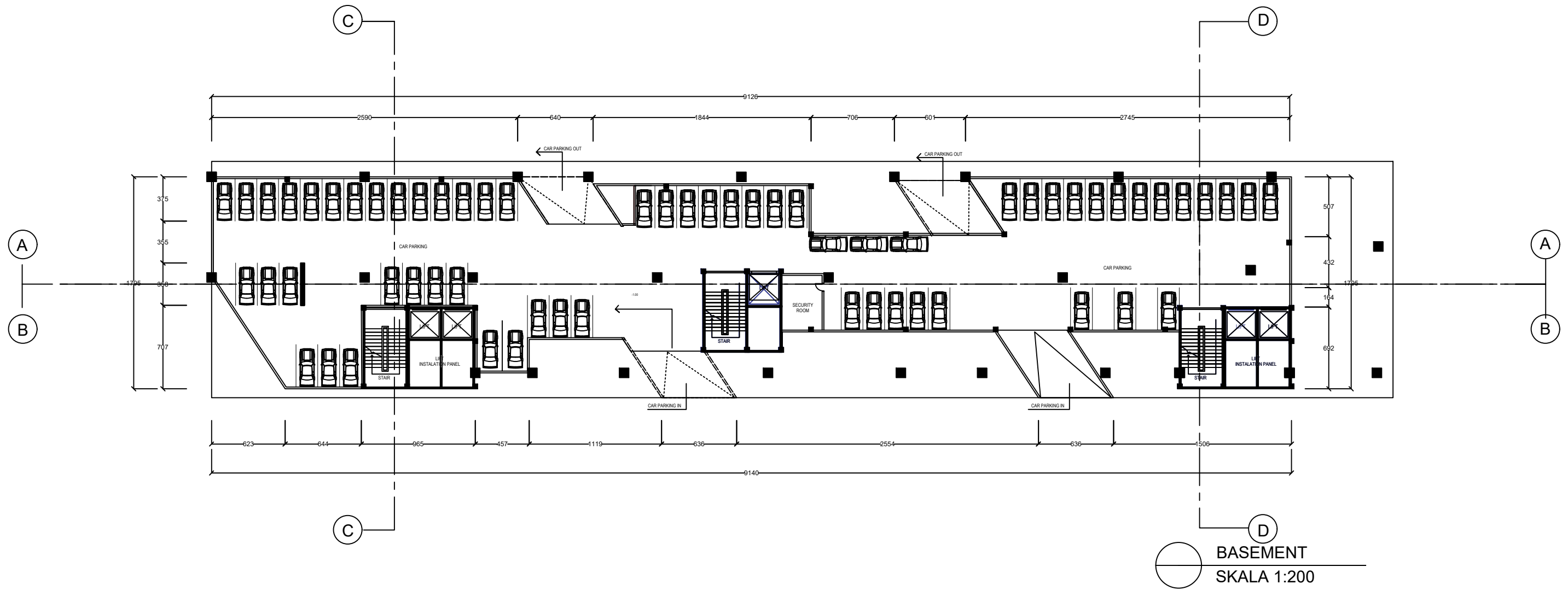


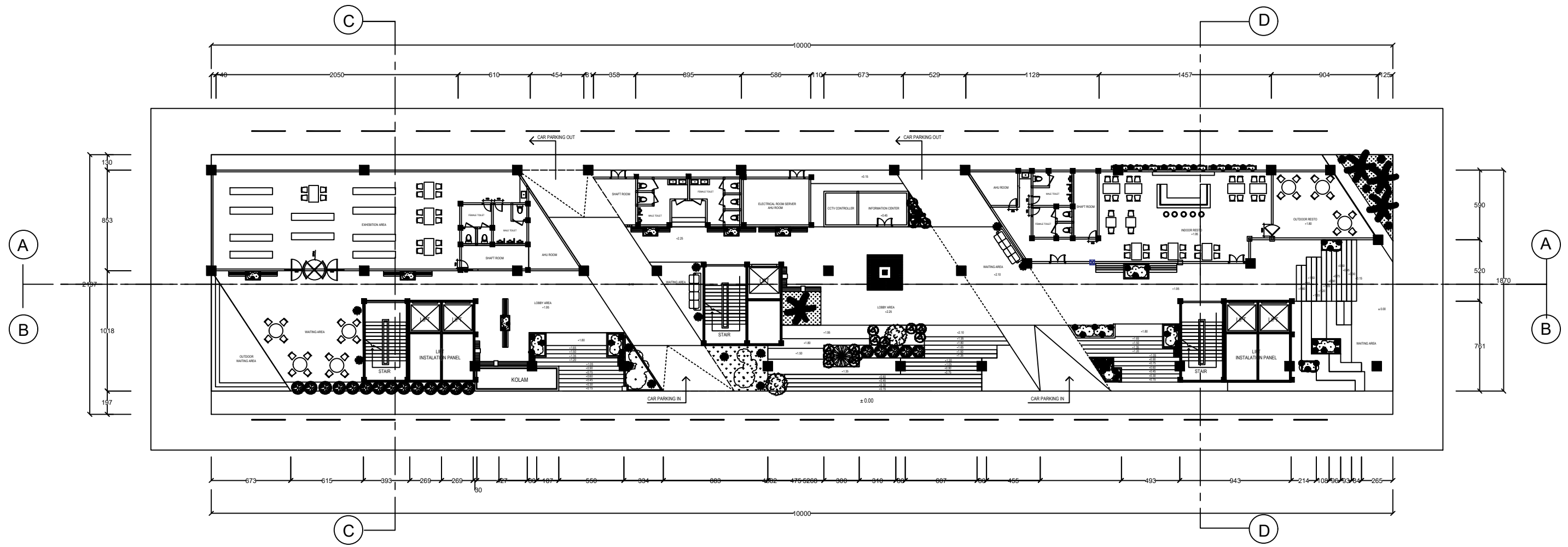
Using a Strauss pile foundation which is suitable for buildings of 3 floors and above, the main column structure or the main column



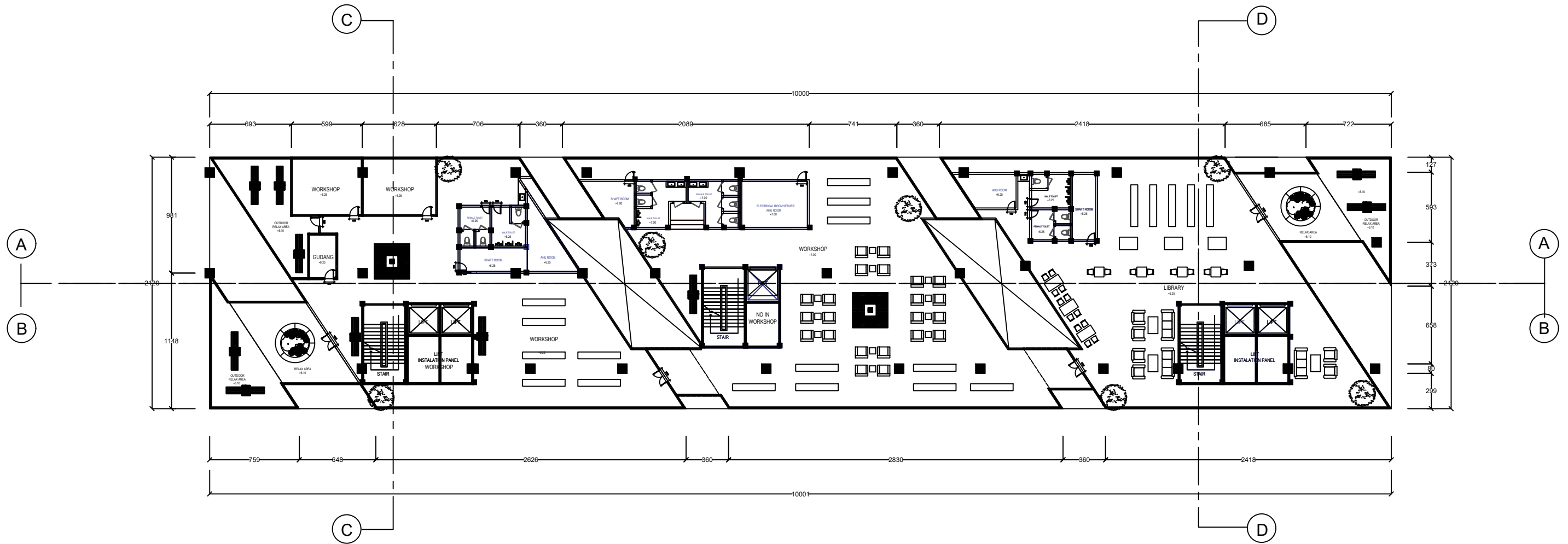
The facade uses solid wood and ACP with a distinctive wood motif



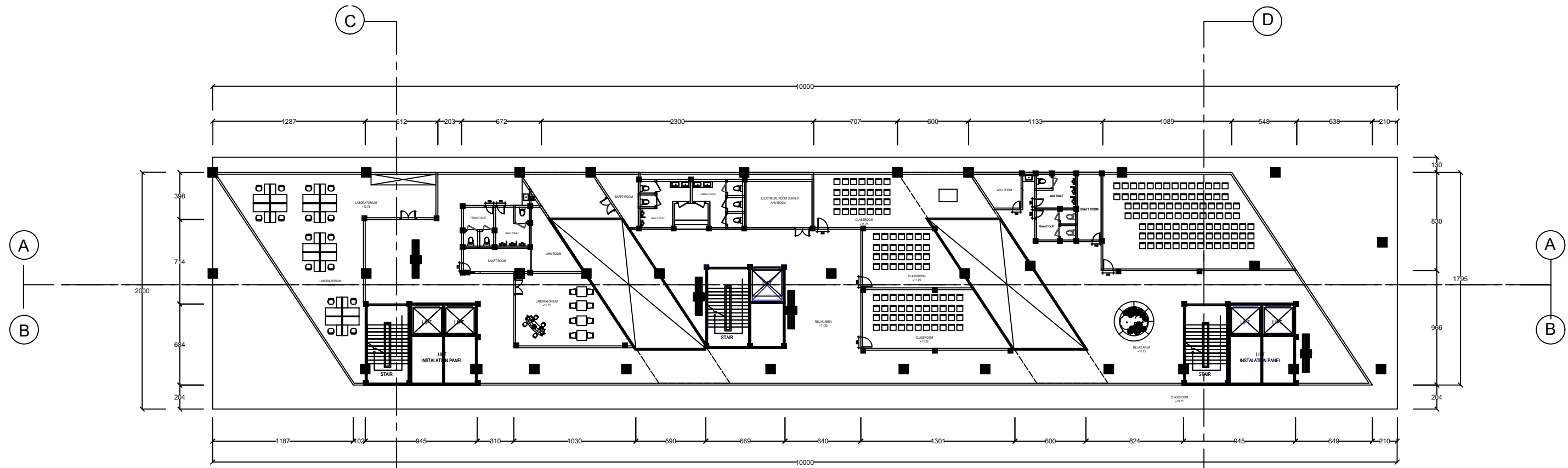




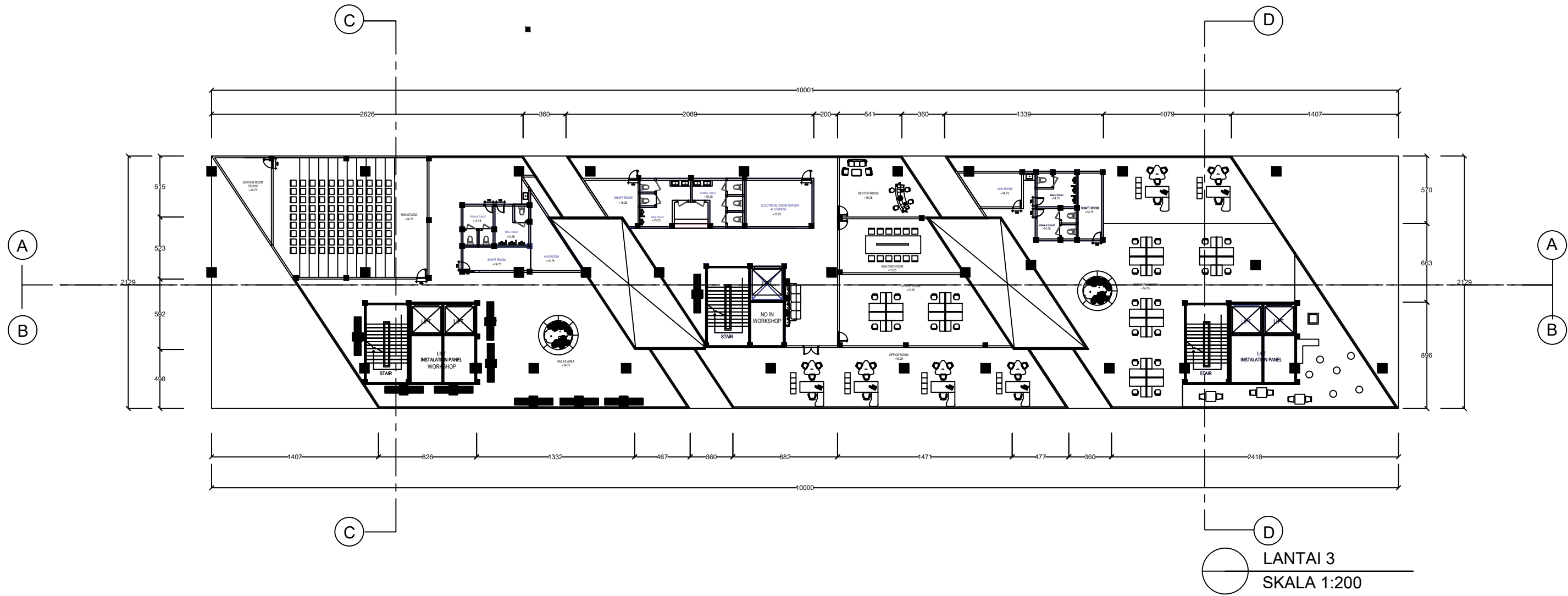
GROUND LEVEL
SKALA 1:200

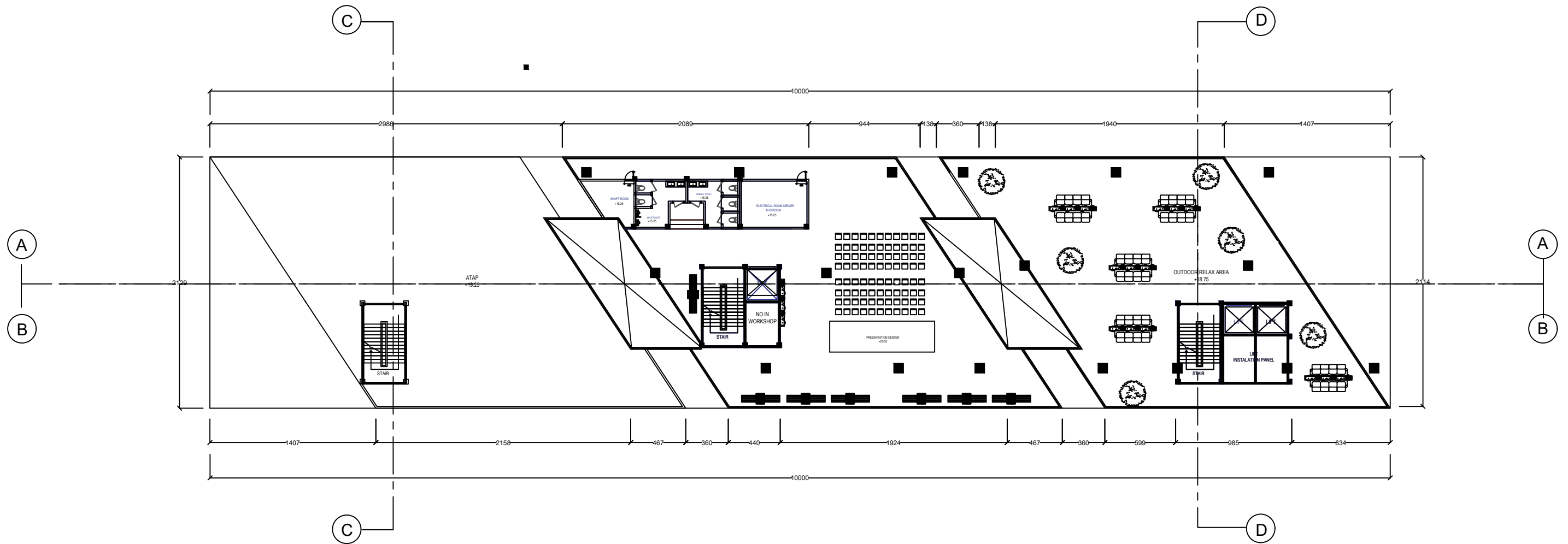


 LANTAI 1
 SKALA 1:200

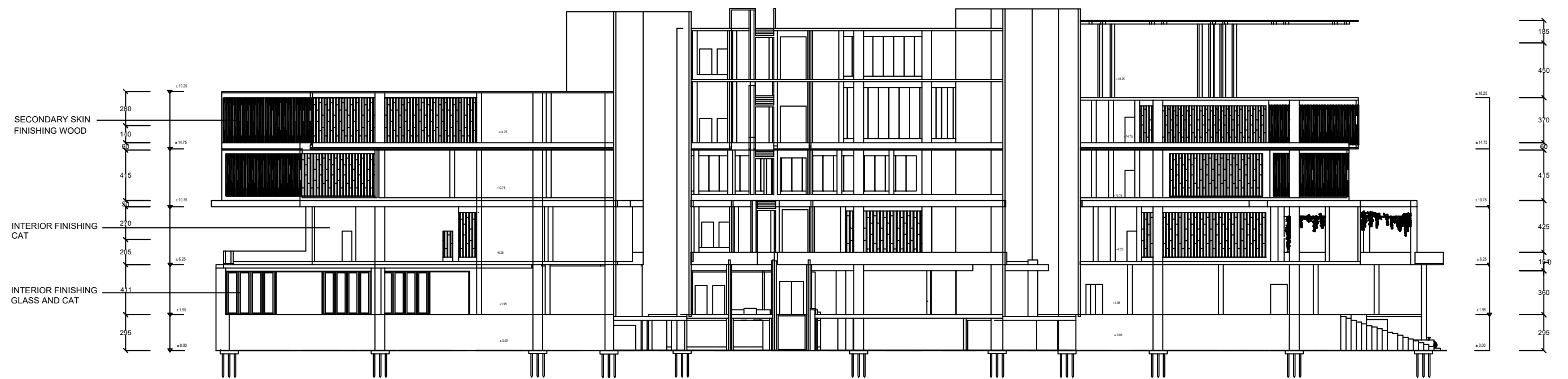


C
D
A
B
LANTAI 2
SKALA 1:200

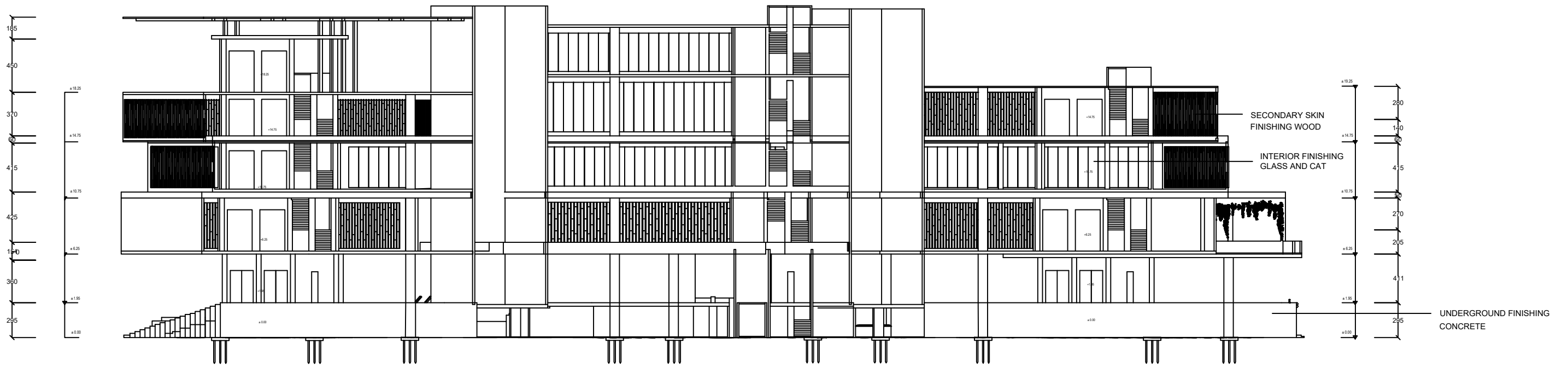


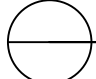


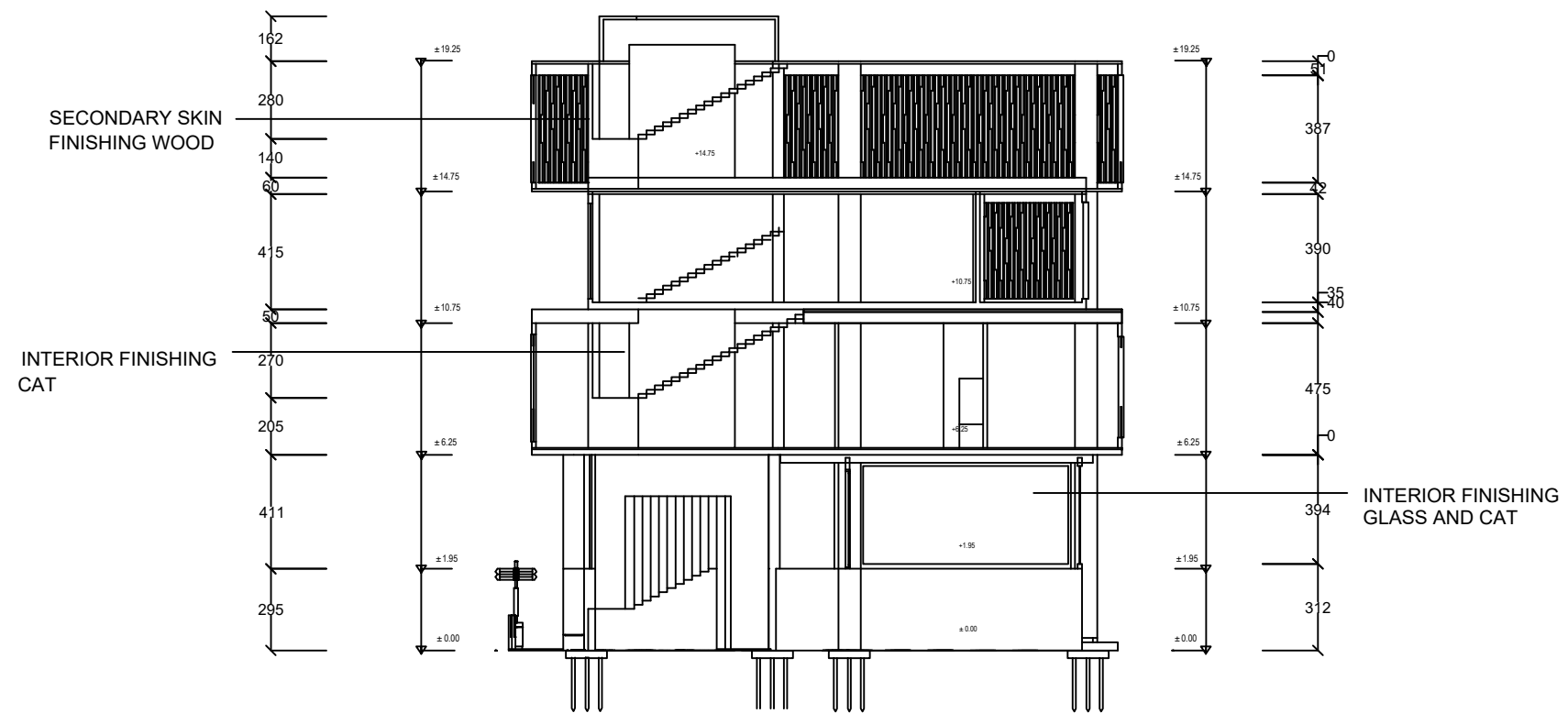
○ LANTAI 4
 SKALA 1:200



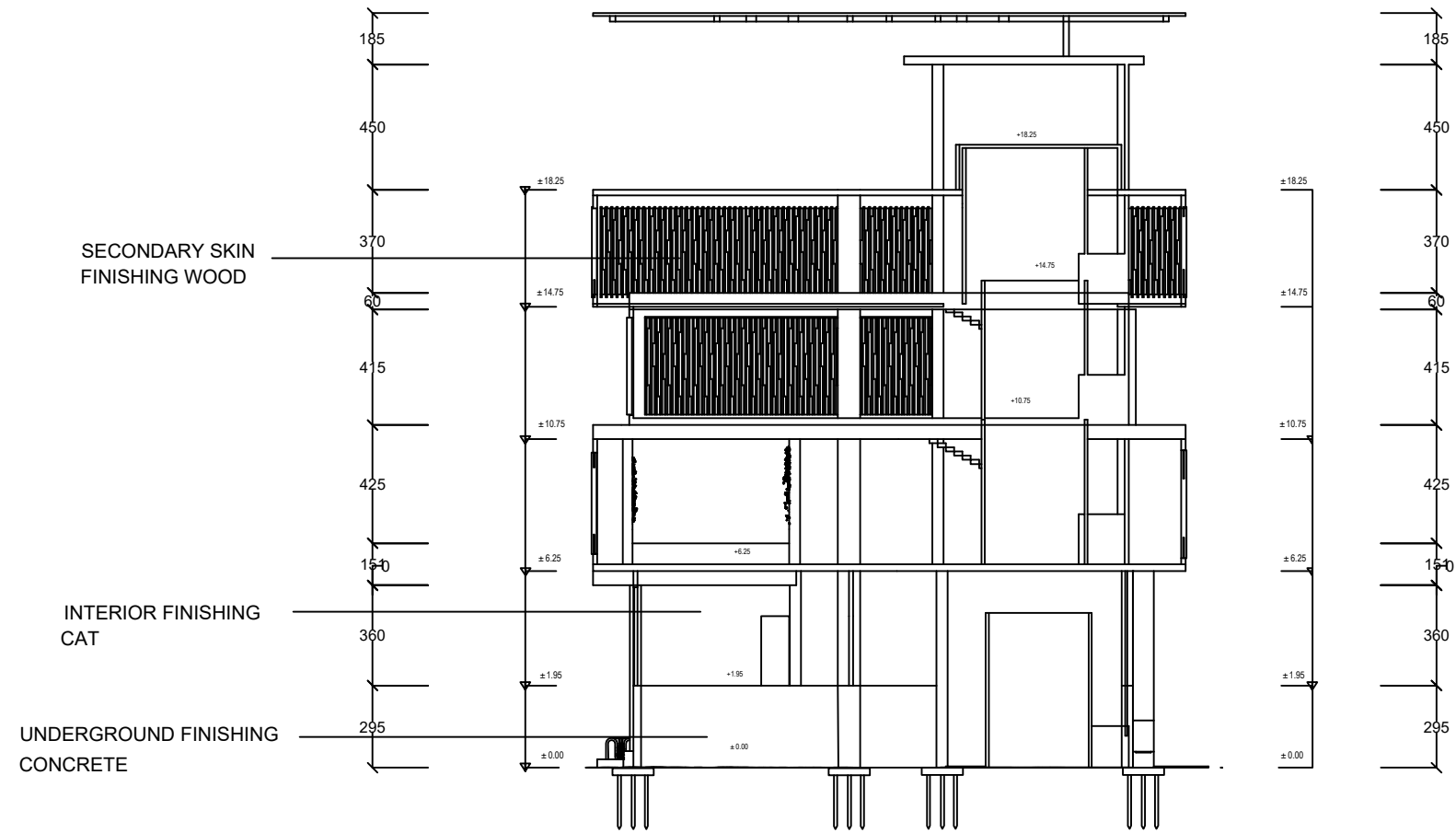
POTONGAN A-A
SKALA 1:200




 POTONGAN B-B
 SKALA 1:200



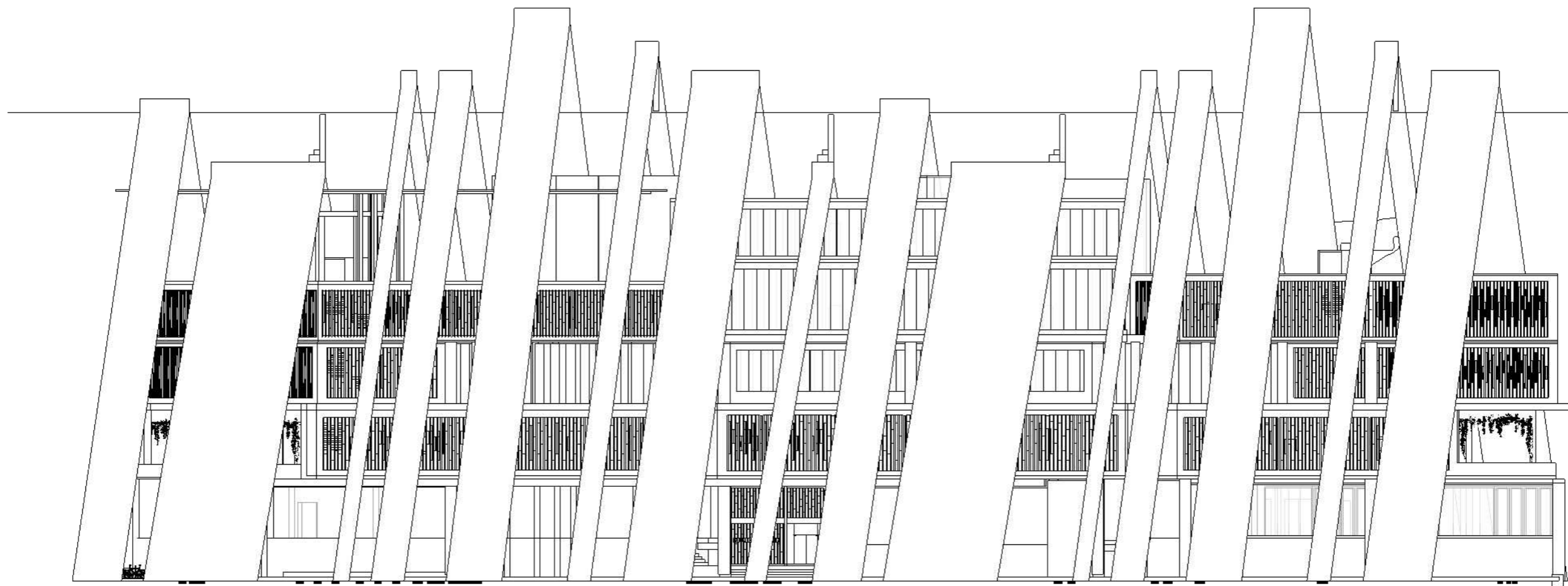

POTONGAN C-C
SKALA 1:200



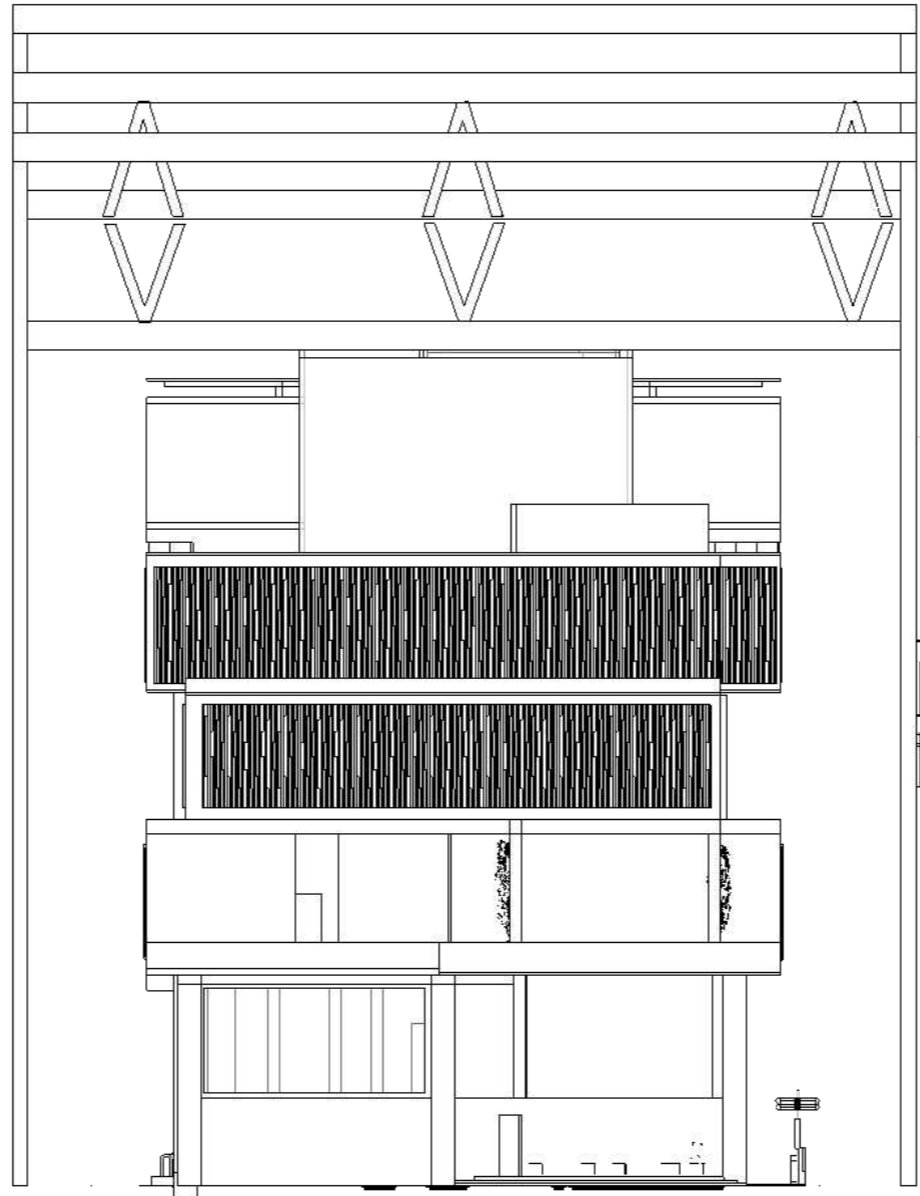

POTONGAN D-D
SKALA 1:200



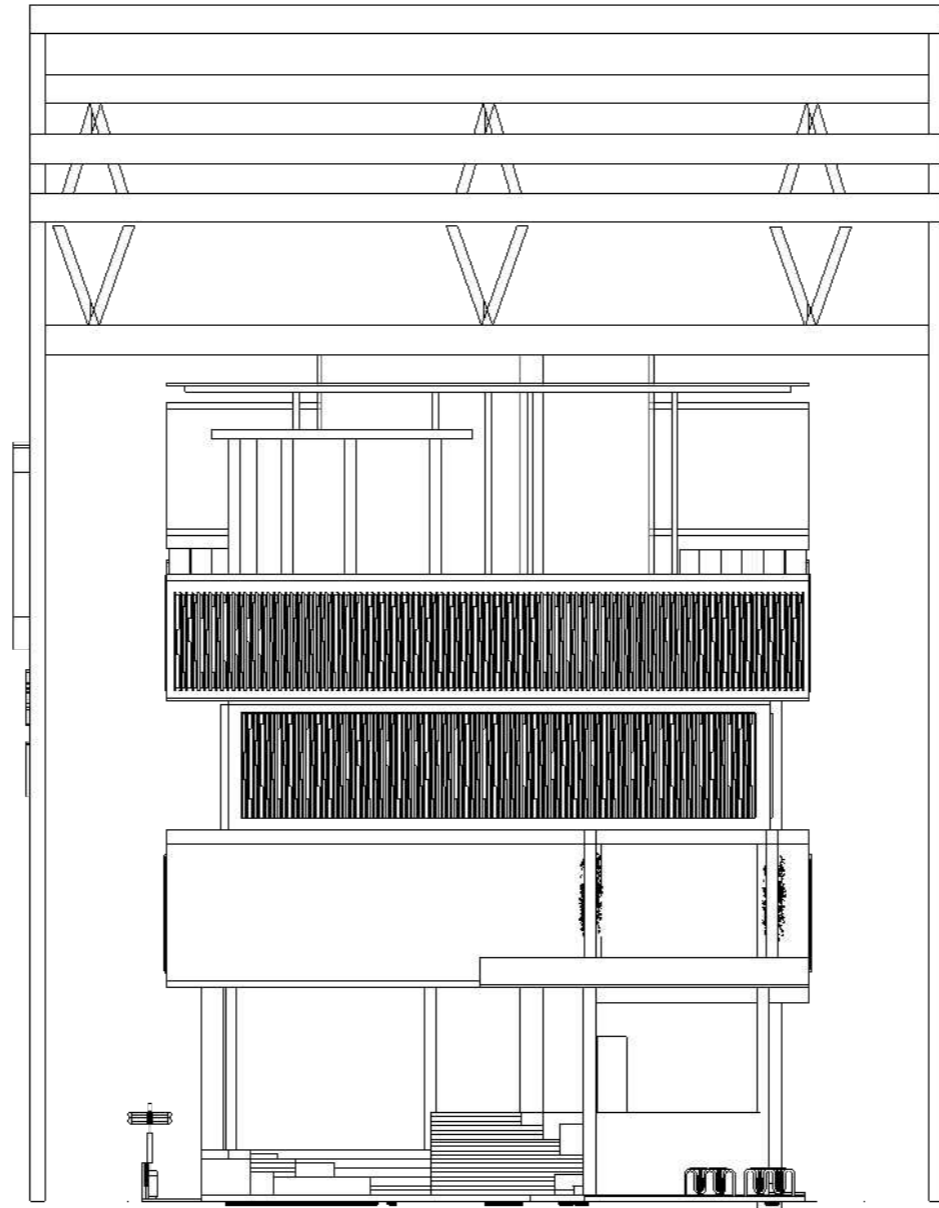
○ TAMPAK DEPAN
SKALA 1:200



○ TAMPAK BELAKANG
SKALA 1:200



○ TAMPAK KIRI
SKALA 1:200



○ TAMPAK KANAN
SKALA 1:200