



Michelle Angela • Yusuf Ariyanto S.T.,
M.Ars. • Ars. Marianne Tunggadewi
Juluk Dwiputri ST. M.Ars

THEME

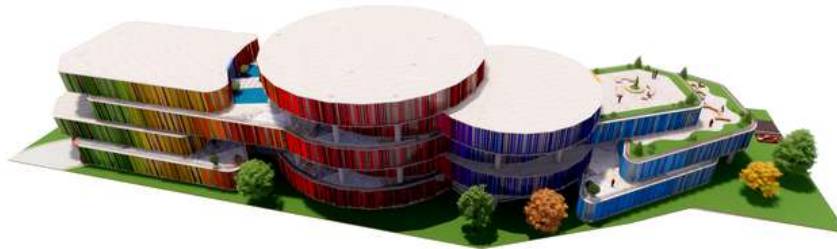
Commercial Space
with Sustainable
Design

MAKRO & MIKRO CONCEPT

Contemporary with
colorful approach

PROBLEM

"How can we
produce a uniquely
design building
which assimilates to
it's surrounding
environment, as a
center that improves
the overall academic
spirit for it's users
mid-pandemic?"



INFILL BUILDING

Contrast Approach: from
its color that is contrast
from its surrounding but
still have similarity in
shape with the existing
building of STU

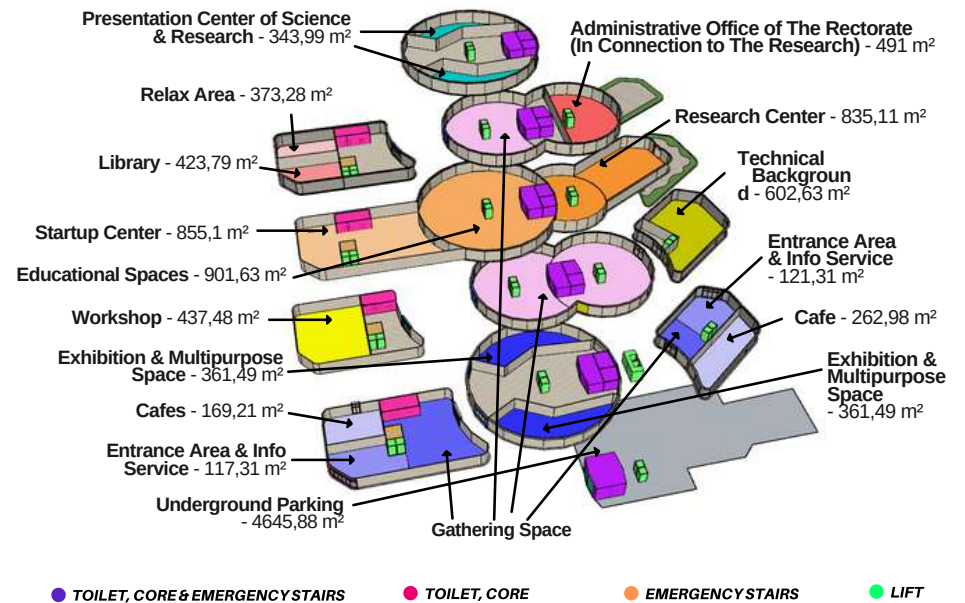
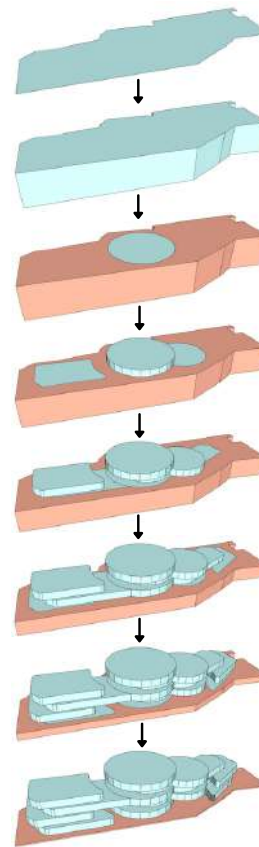
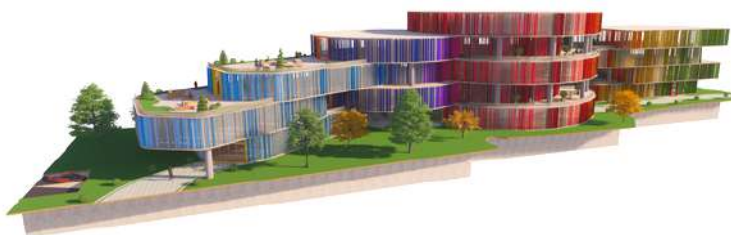
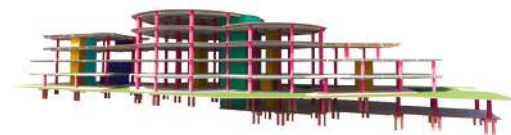
COLOR CONCEPT

Its attractive colors represent 7 faculties of STU
(green, yellow, orange, red, dark blue, light
blue, and gray). In hope that this building can
represent all of the 7 faculties. In addition, the
use of color makes the building stand out and
attract attention

CONSTRUCTION

Uses Bored Pile
foundation, Sloof,
Concrete Retaining Walls,
Concrete Floor Plate, Flat
Roof, Column width
700mm, Beam 40x80cm

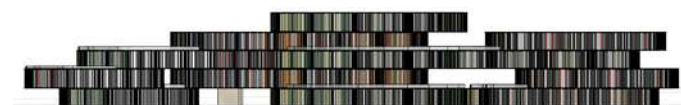
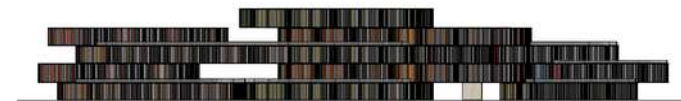
- COLUMN
- BEAM
- LIFT
- TOILET, CORE & EMERGENCY STAIRS
- BORED PILE FOUNDATION
- TOILET & CORE
- EMERGENCY STAIRS



ENCLOSURE

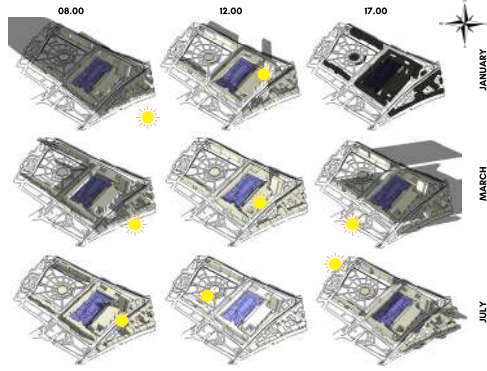
Uses hebel brick (cellular
lightweight concrete) and
low-E glass.

Uses glazed low-E glass
and recycled wood plank
1460x320x80mm for
second skin to cover
some private areas

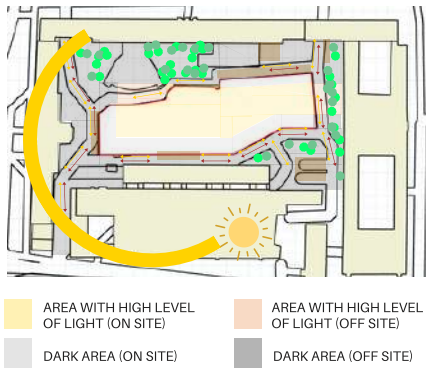




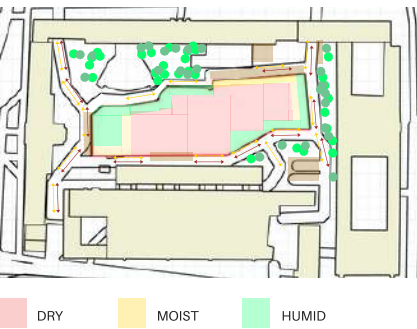
POSITIONS OF THE SUN



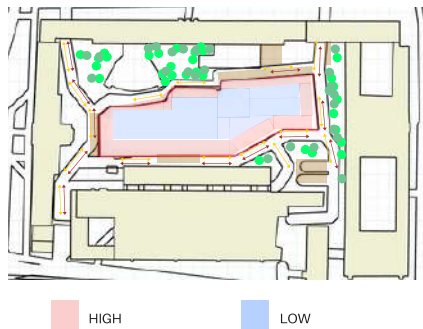
LIGHT



HUMIDITY



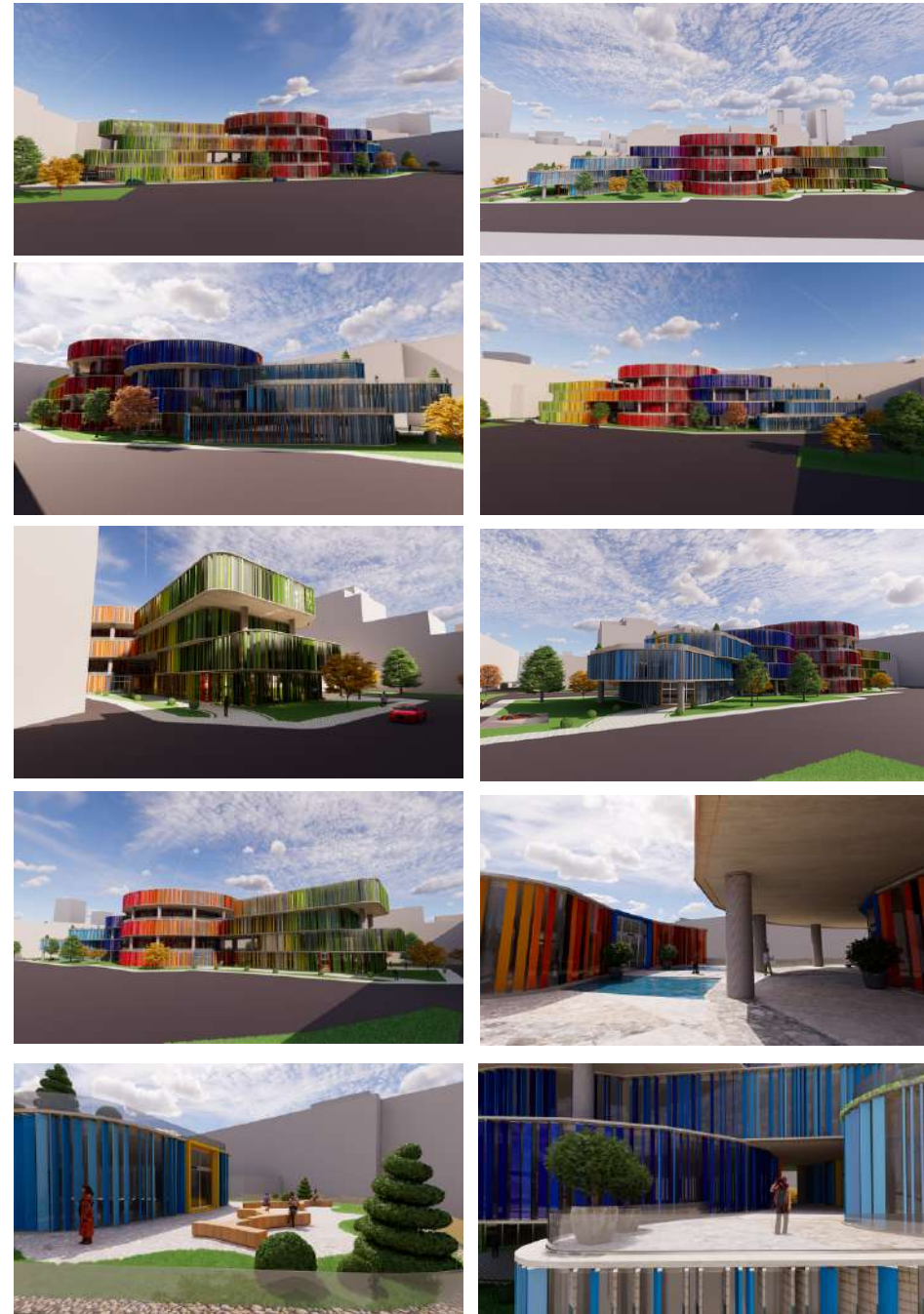
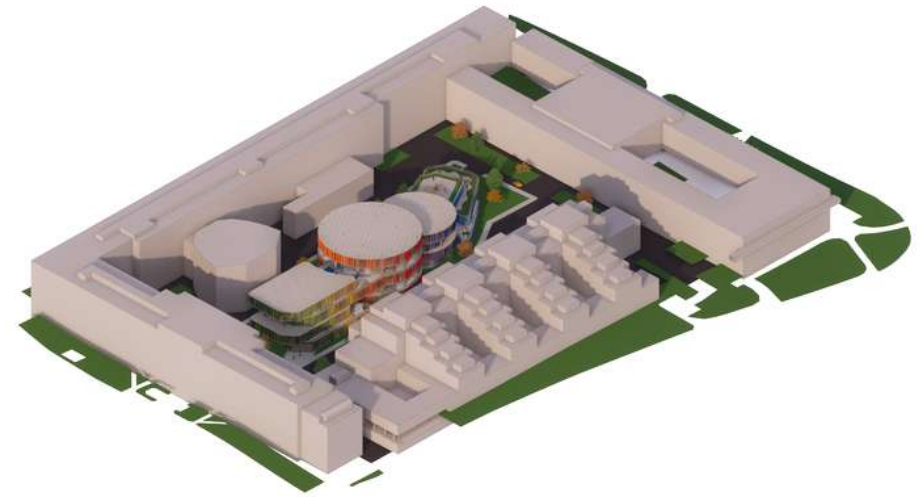
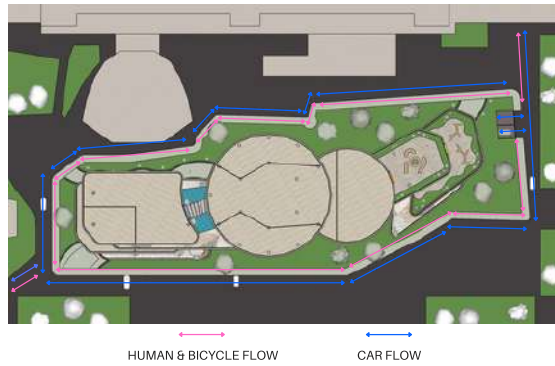
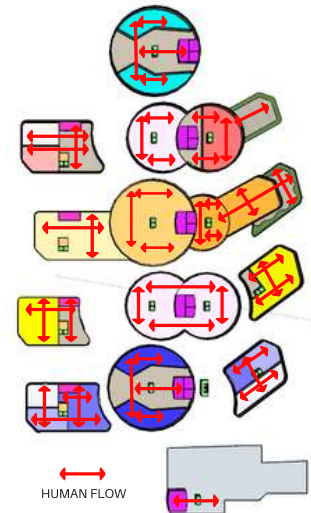
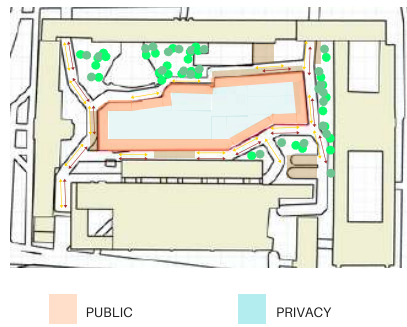
NOISE



AIR QUALITY



PRIVACY



CAFE



ENTRANCE AREA

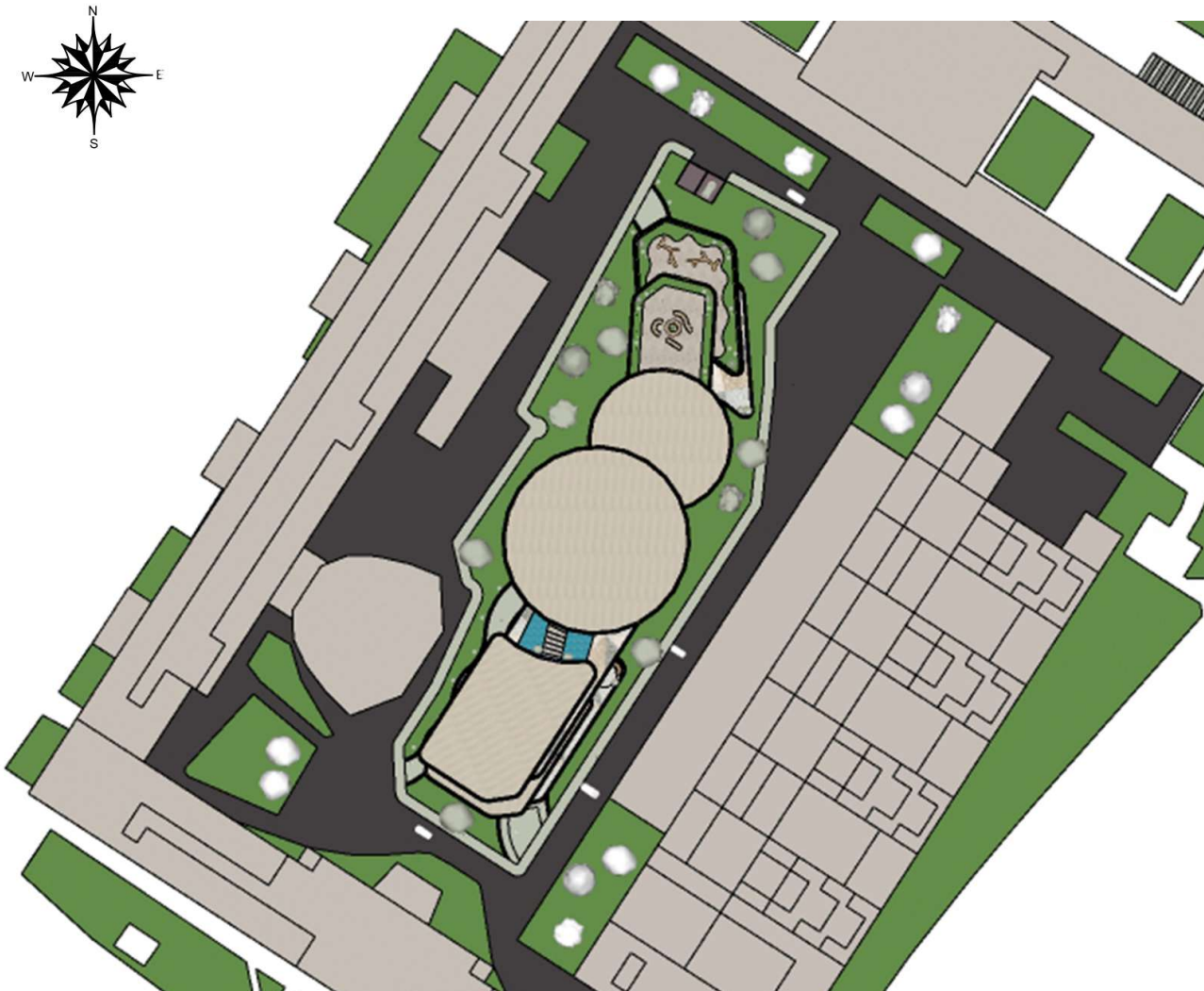


GATHERING SPACE

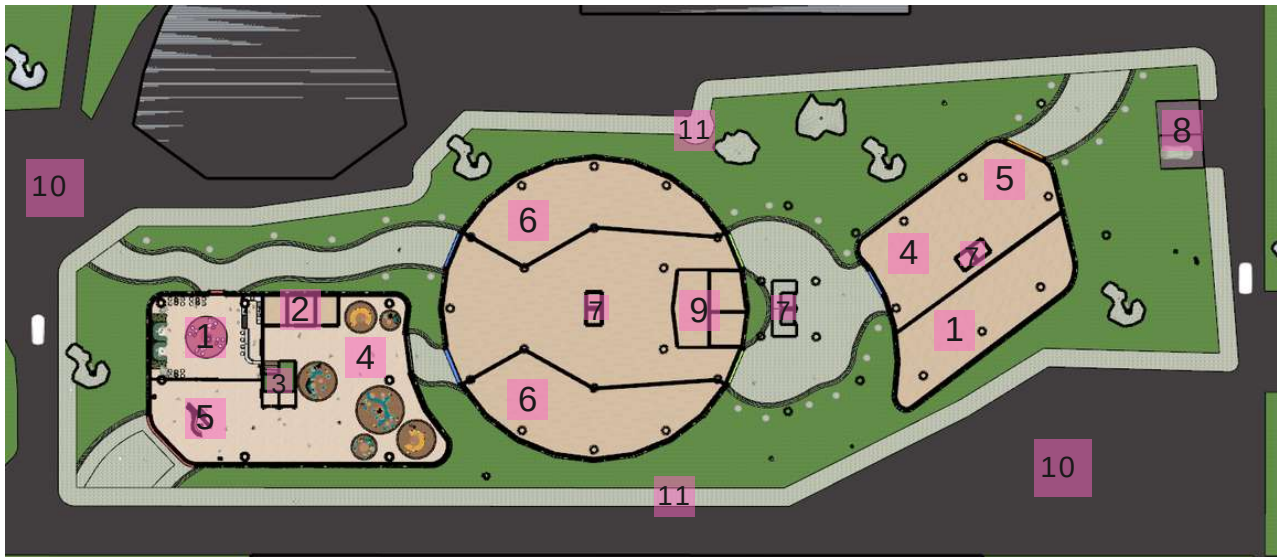


LIBRARY



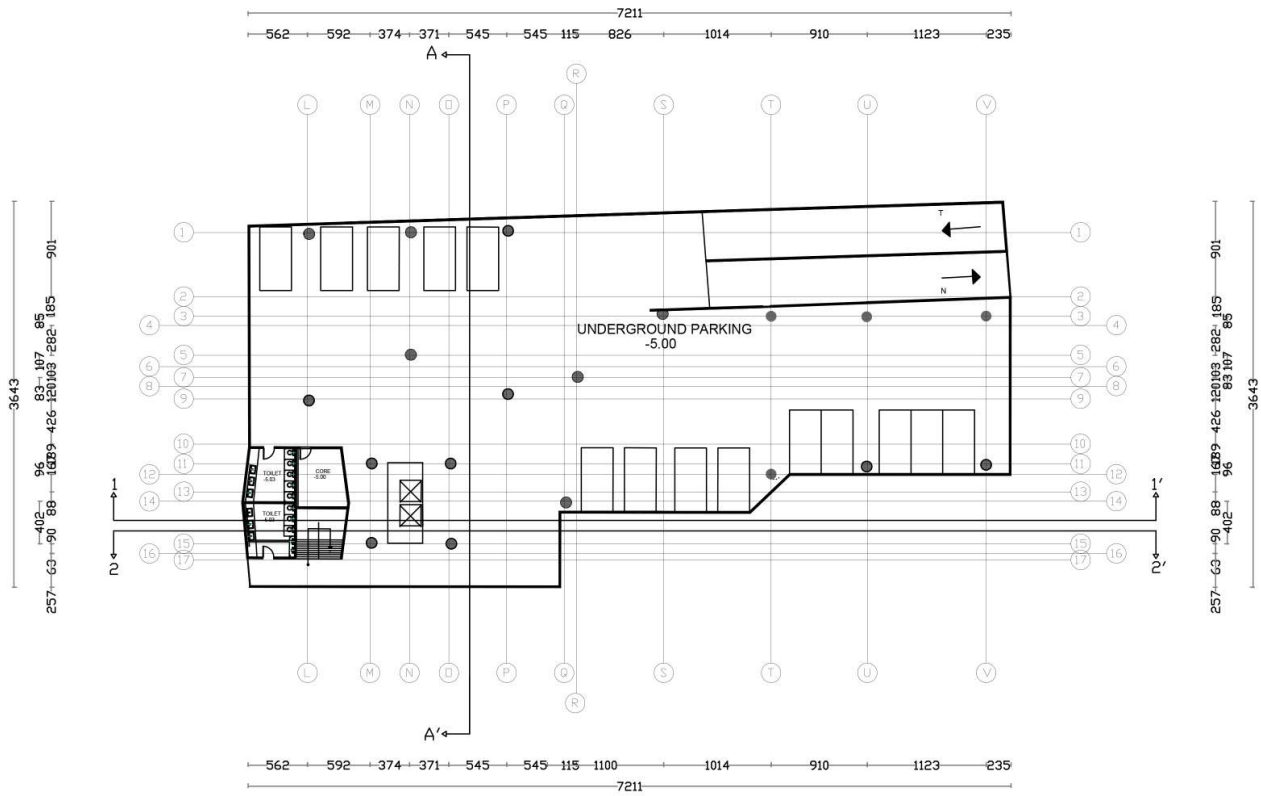



○ SITE PLAN
SKALA 1:1000

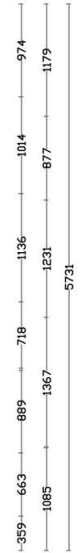
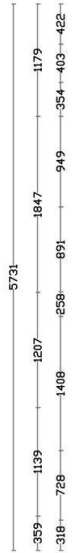
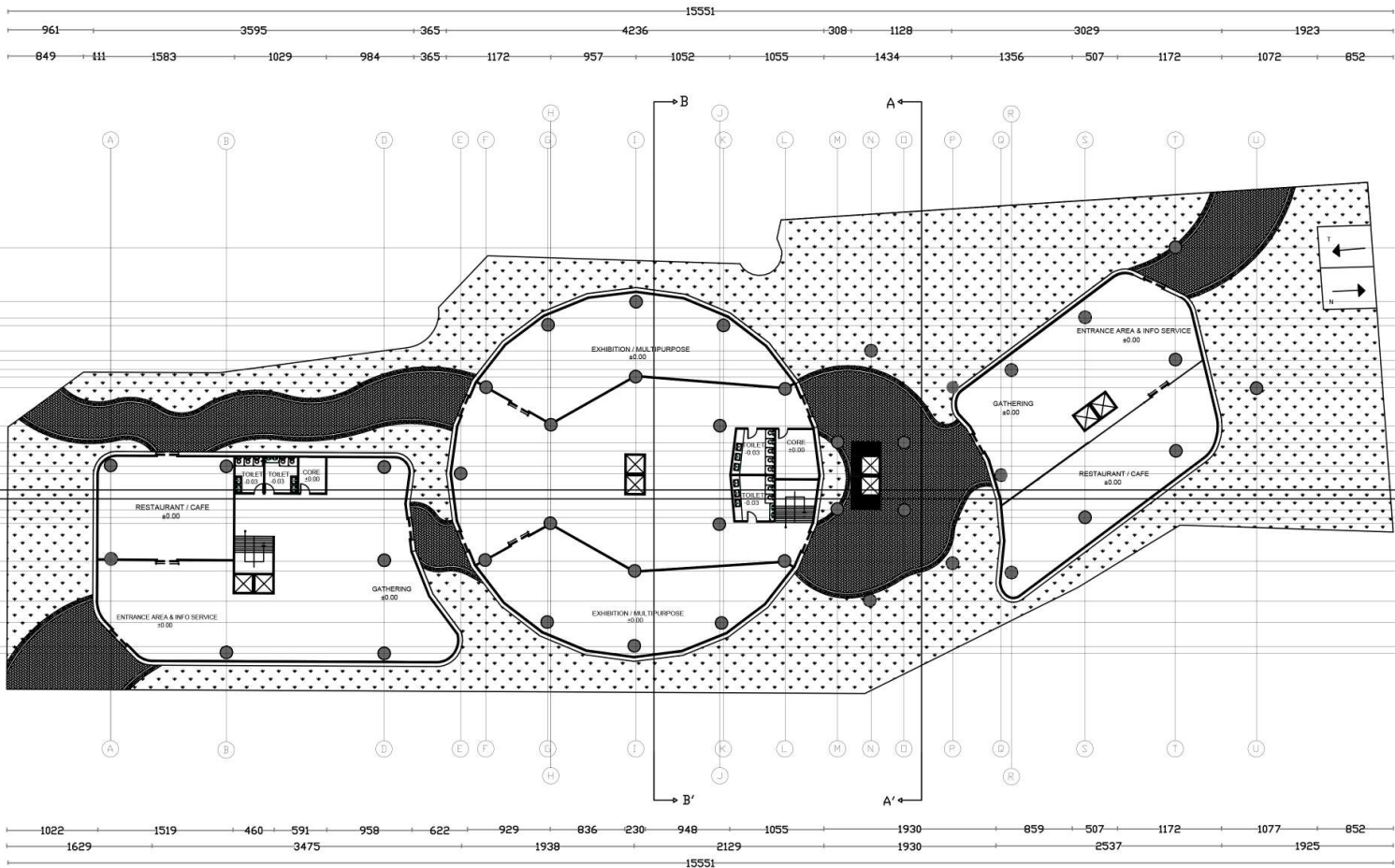


LAYOUT

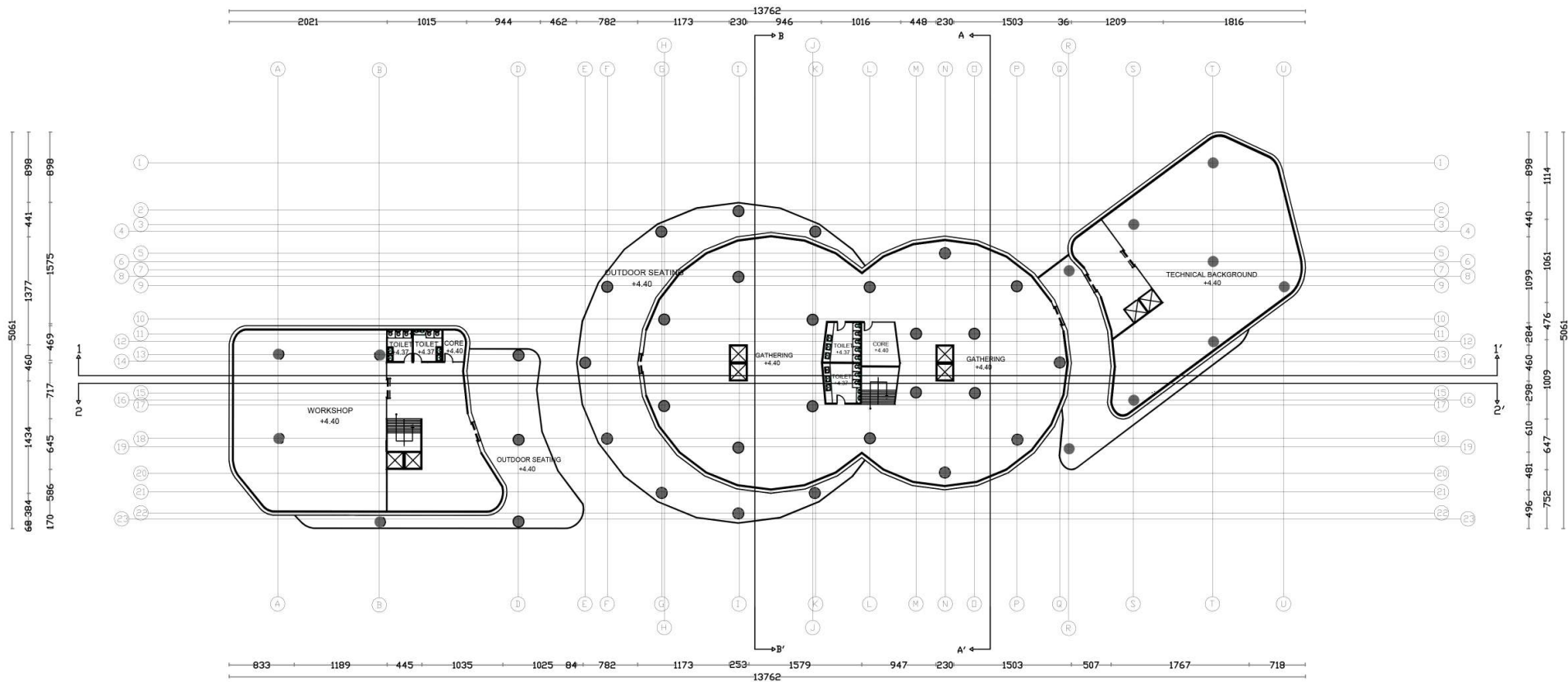
1. Restaurant/Cafe
2. Toilet & Core
3. Lift & Emergency Stairs
4. Gathering Space
5. Entrance Area & Info Service
6. Exhibition & Multipurpose
7. Lift
8. Underground Parking
9. Toilet, Core & Emergency Stairs
10. Circulation Path (Vehicular)
11. Circulation Path (Human & Bicycle)



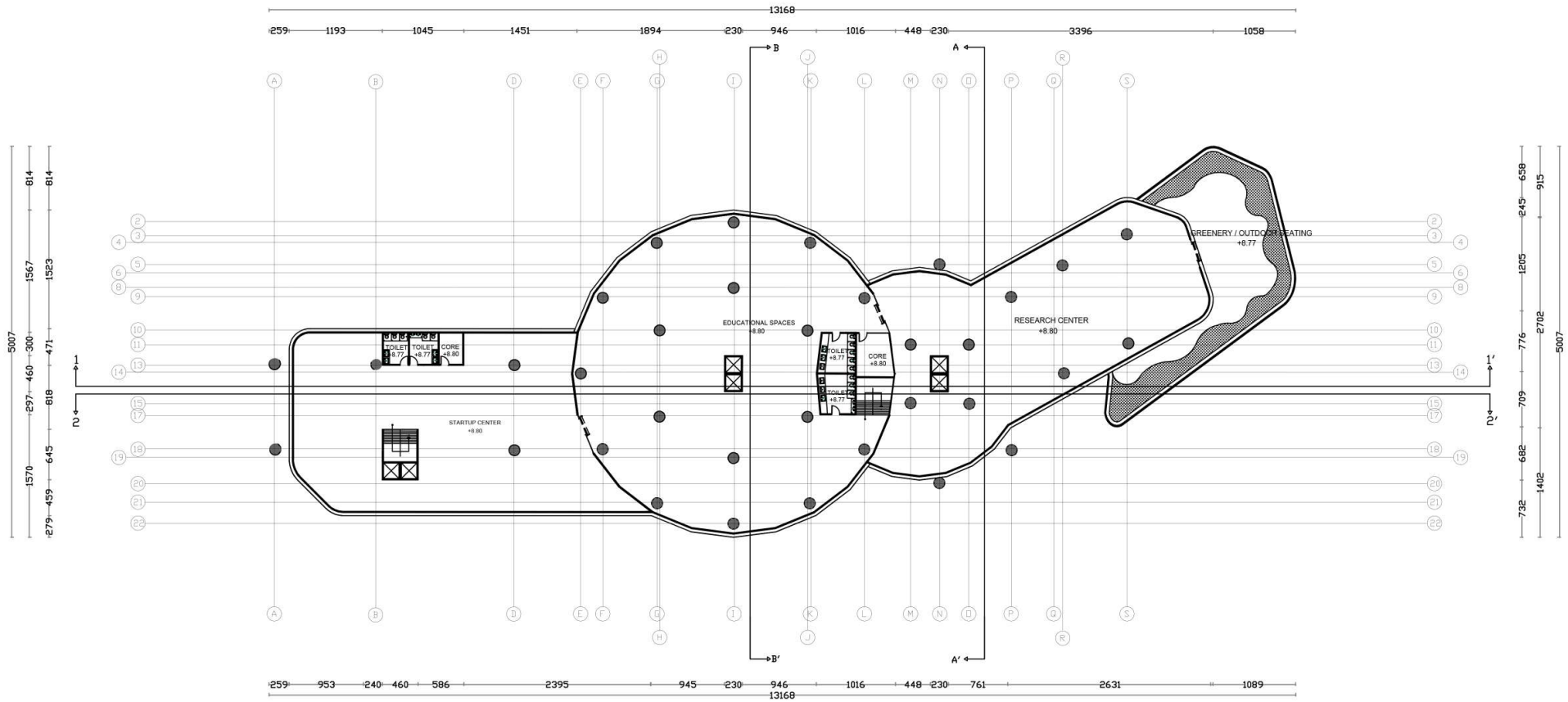

BASEMENT FLOOR PLAN
 SKALA 1:450



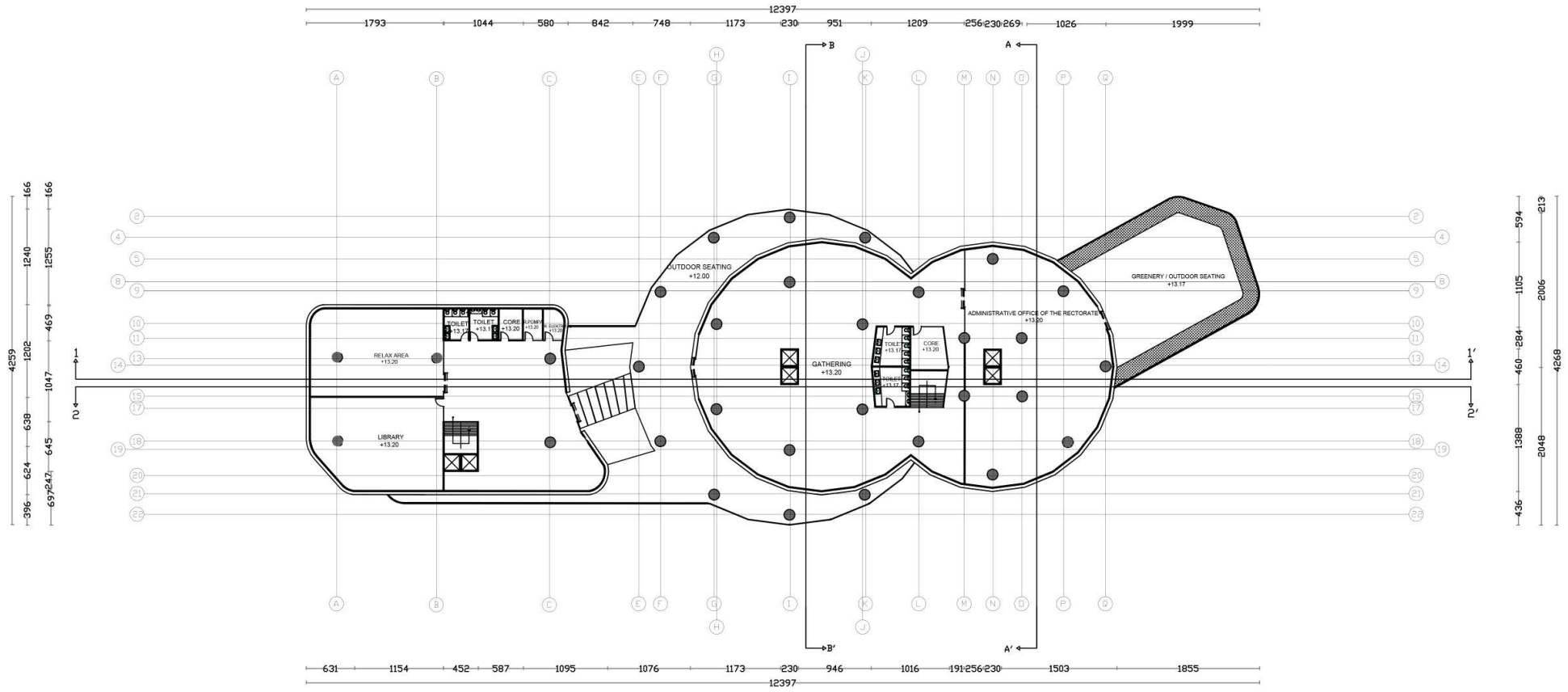
FLOOR PLAN 1
SKALA 1:500



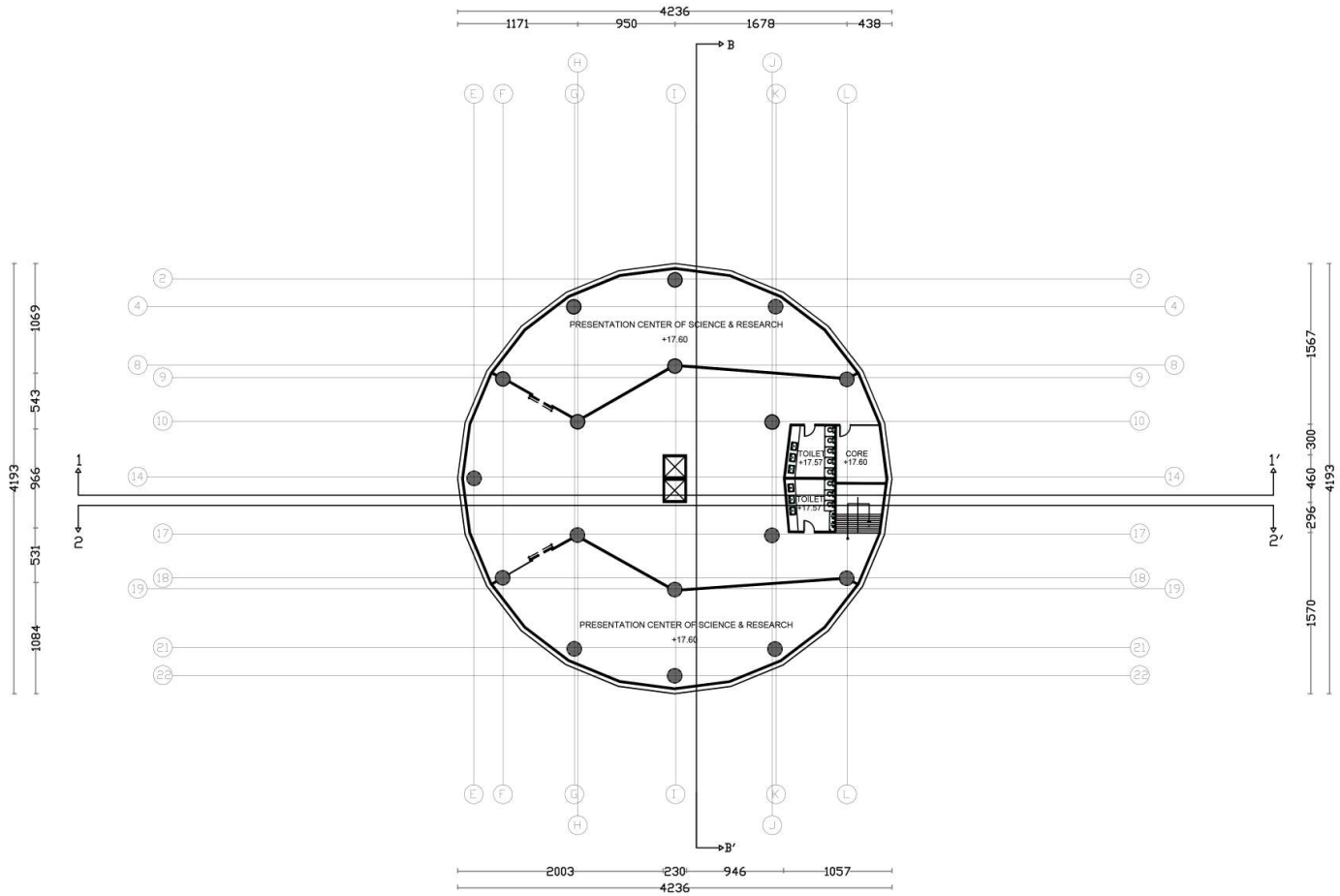
FLOOR PLAN 2
SKALA 1:500



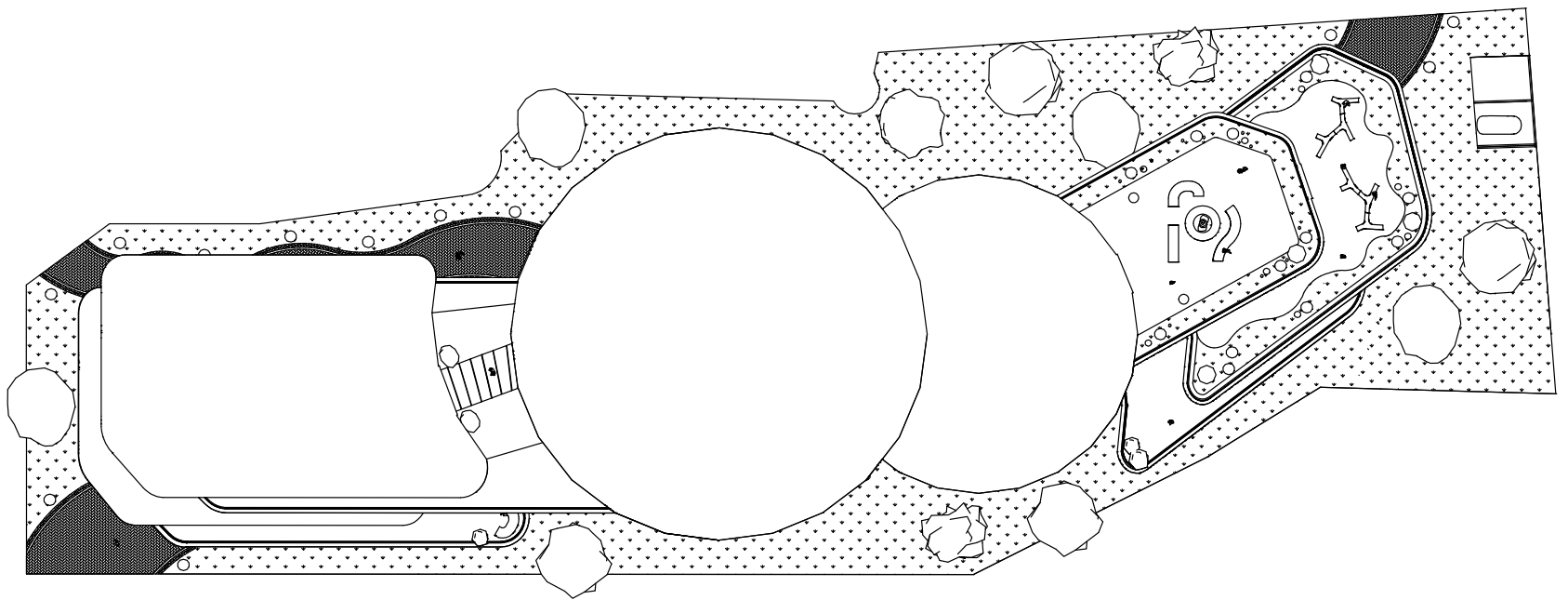
FLOOR PLAN 3
SKALA 1:500



FLOOR PLAN 4
SKALA 1:500



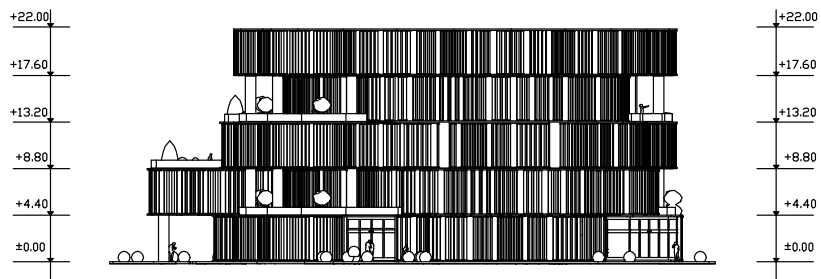
FLOOR PLAN 5
SKALA 1:450



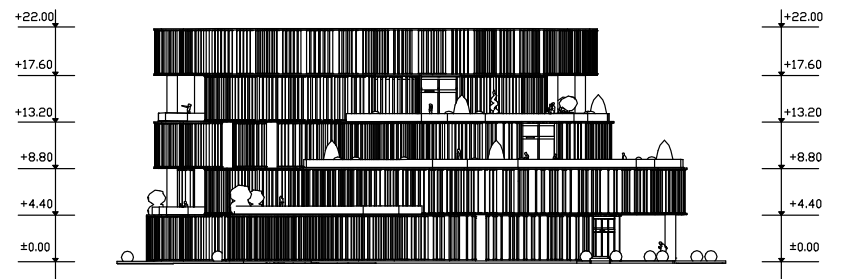
TOP VIEW
SKALA 1:450



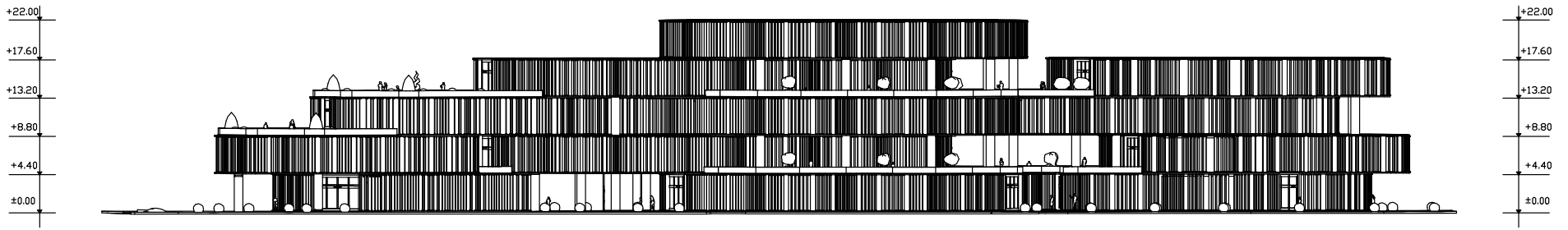
FRONT VIEW
SKALA 1:450



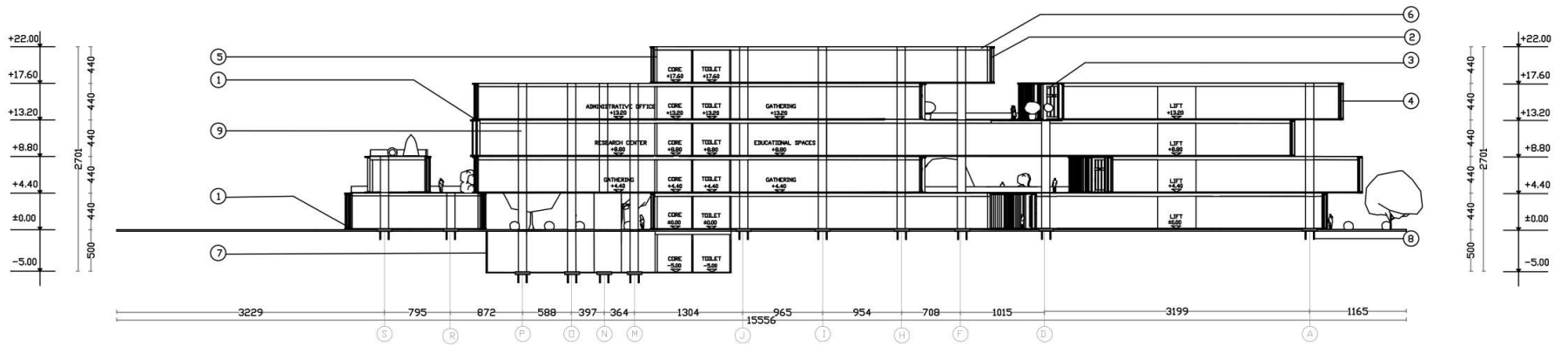
LEFT VIEW
SKALA 1:450



RIGHT VIEW
SKALA 1:450



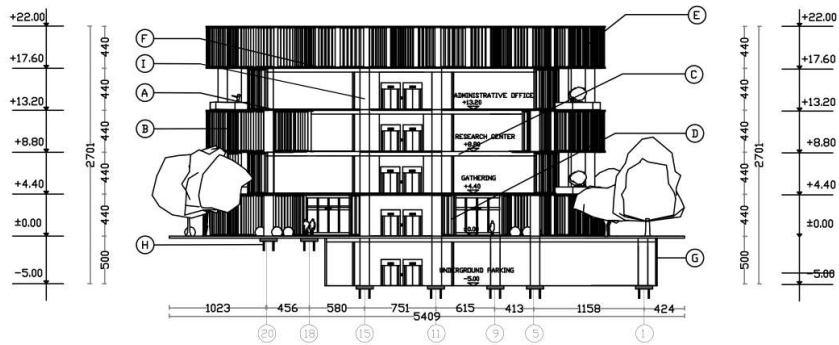
○ BACK VIEW
SKALA 1:450



SECTION 2-2'
SKALA 1:500

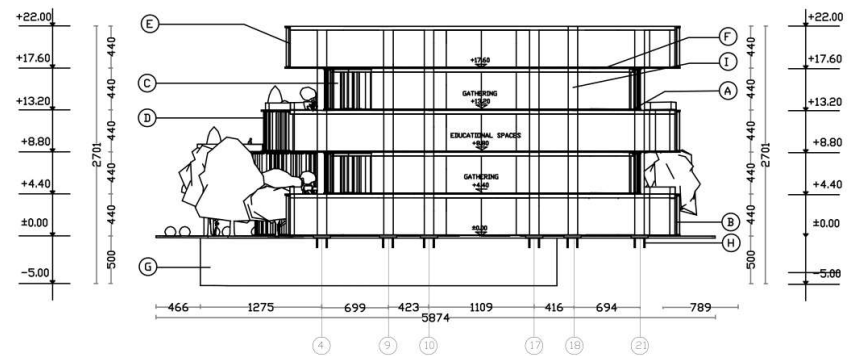
LEGENDA :

- | | | |
|--|---------------------------------|----------|
| ① CONCRETE FLOOR PLATE 150MM | ⑤ HEBEL BRICK | ⑨ COLUMN |
| ② RECYCLED WOOD PLANK
1460 X 320 X 80MM | ⑥ CONCRETE FLOOR PLATE 200MM | |
| ③ LOW-E GLASS | ⑦ CONCRETE RETAINING WALL 300MM | |
| ④ GLAZED LOW-E GLASS
1460 X 320 X 60MM | ⑧ PILE FOUNDATION | |



LEGENDA :

- | | | |
|--|-----------------------------------|------------|
| (A) CONCRETE FLOOR PLATE 150MM | (E) HEBEL BRICK | (I) COLUMN |
| (B) RECYCLED WOOD PLANK
1460 X 320 X 80MM | (F) CONCRETE FLOOR PLATE 200MM | |
| (C) LOW-E GLASS | (G) CONCRETE RETAINING WALL 300MM | |
| (D) GLAZED LOW-E GLASS
1460 X 320 X 80MM | (H) PILE FOUNDATION | |



LEGENDA :

- | | | |
|--|-----------------------------------|------------|
| (A) CONCRETE FLOOR PLATE 150MM | (E) HEBEL BRICK | (I) COLUMN |
| (B) RECYCLED WOOD PLANK
1460 X 320 X 80MM | (F) CONCRETE FLOOR PLATE 200MM | |
| (C) LOW-E GLASS | (G) CONCRETE RETAINING WALL 300MM | |
| (D) GLAZED LOW-E GLASS
1460 X 320 X 80MM | (H) PILE FOUNDATION | |