

### Project idea:

At present, the buildings of the STU faculties do not co-operate with each other and have an introverted relationship. My intention was to remove this fact and use the newly designed building as a tool for achieving a certain co-ownership of individual faculties. From this idea came the concept for itself mass of the building. The building is created by gradually stacking volumes of cubes. This creates matter that goes from complete disintegration to cohesive matter. The insulated parts are connected to the main mass by a footbridge at level 2.np. The material carries the thickness of the surrounding buildings and thus has an undisturbed effect in the given environment.

### Project description:

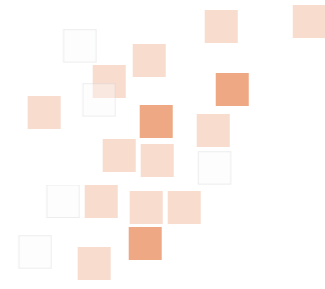
The building consists of two underground floors and five above ground. Underground floors mostly they carry the function of static transport but are supplemented by workshops and heavy laboratories. Laboratories are illuminated with two skylights. More isolated parts of the material are designed as spaces for rent - ideologically the café, print shop and the remaining spaces installed in the design serve as beginning studios. Main mass has exhibition space on the ground floor, followed by a dining room with a preparation room, a library with a study room, administration and a science and research presentation center on the top floor. The building has two atriums which can be used from the workshop premises.

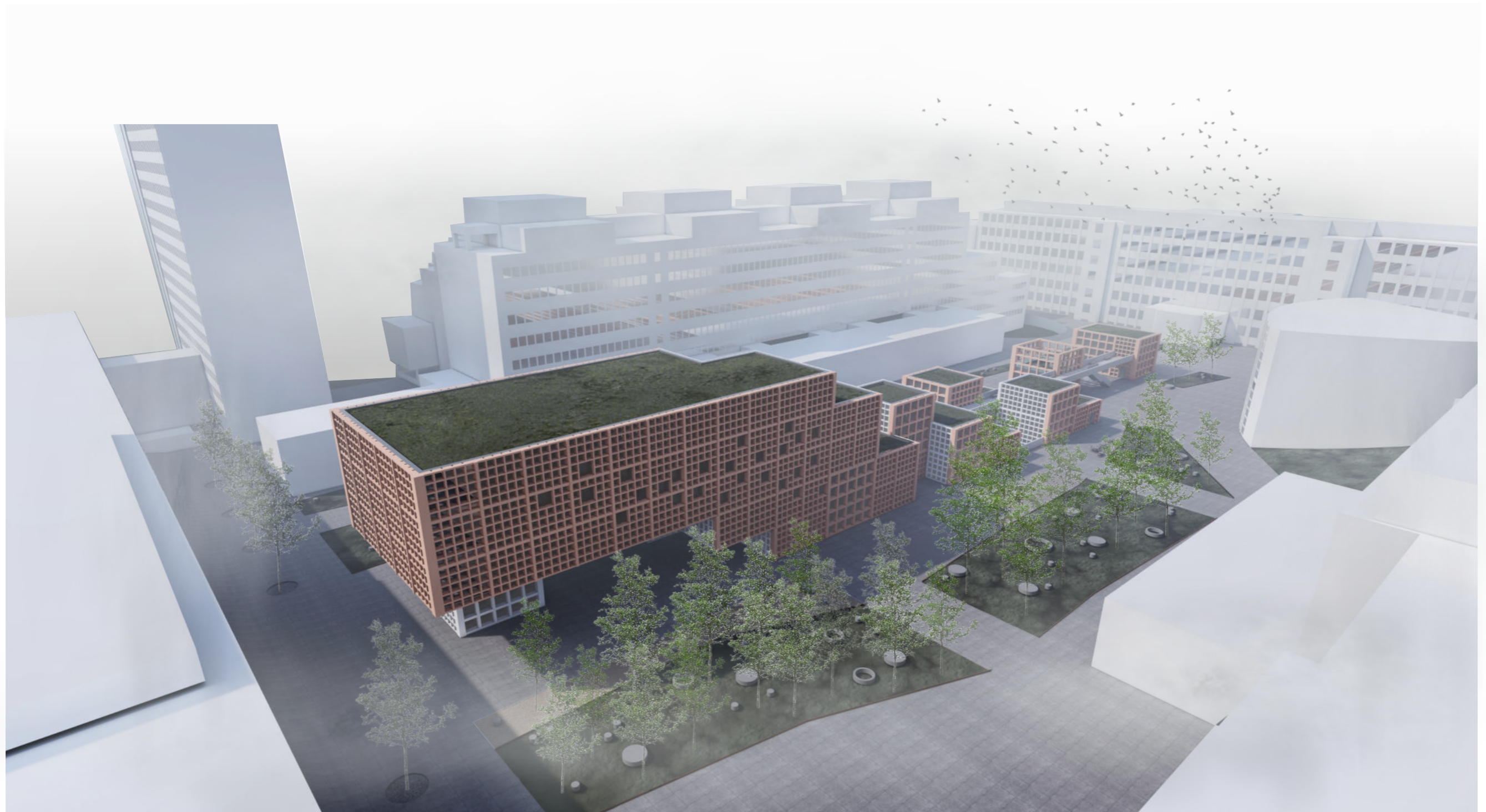
### Technical information:

The main supporting system is a reinforced concrete skeleton. The facades of the surrounding buildings in the courtyard were the inspiration for the creation of a new facade, which corresponds to the strict raster. The facade consists of square-shaped segments. Each segment is made up of fixed verticals parts and subsequently from adjustable horizontal parts to achieve indirect lighting in the riéri. Following the pattern of the surrounding facades, the load-bearing system of the building is finely indicated on the new facade and at the same time it is used the diversity of thicknesses of the parts of individual segments themselves. The façade has a two-tone denie. The main views are formed in a brick shade which contains a reference to the color design of the original facade from the rehabilitated laboratory building. This main color is complemented by non-contrasting white.

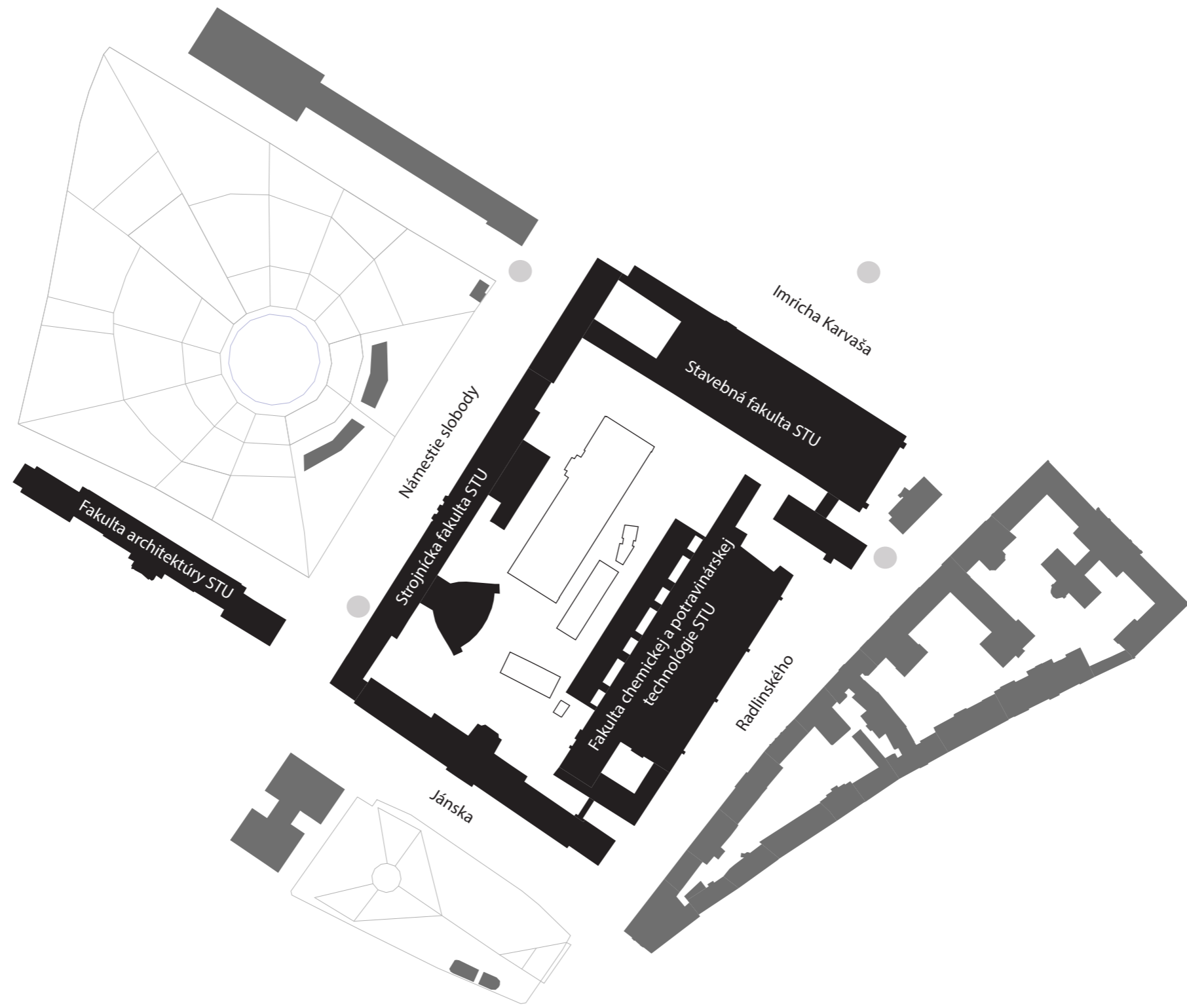
### Co-authors:

doc. Ing. arch. Branislav Puskar, PhD.



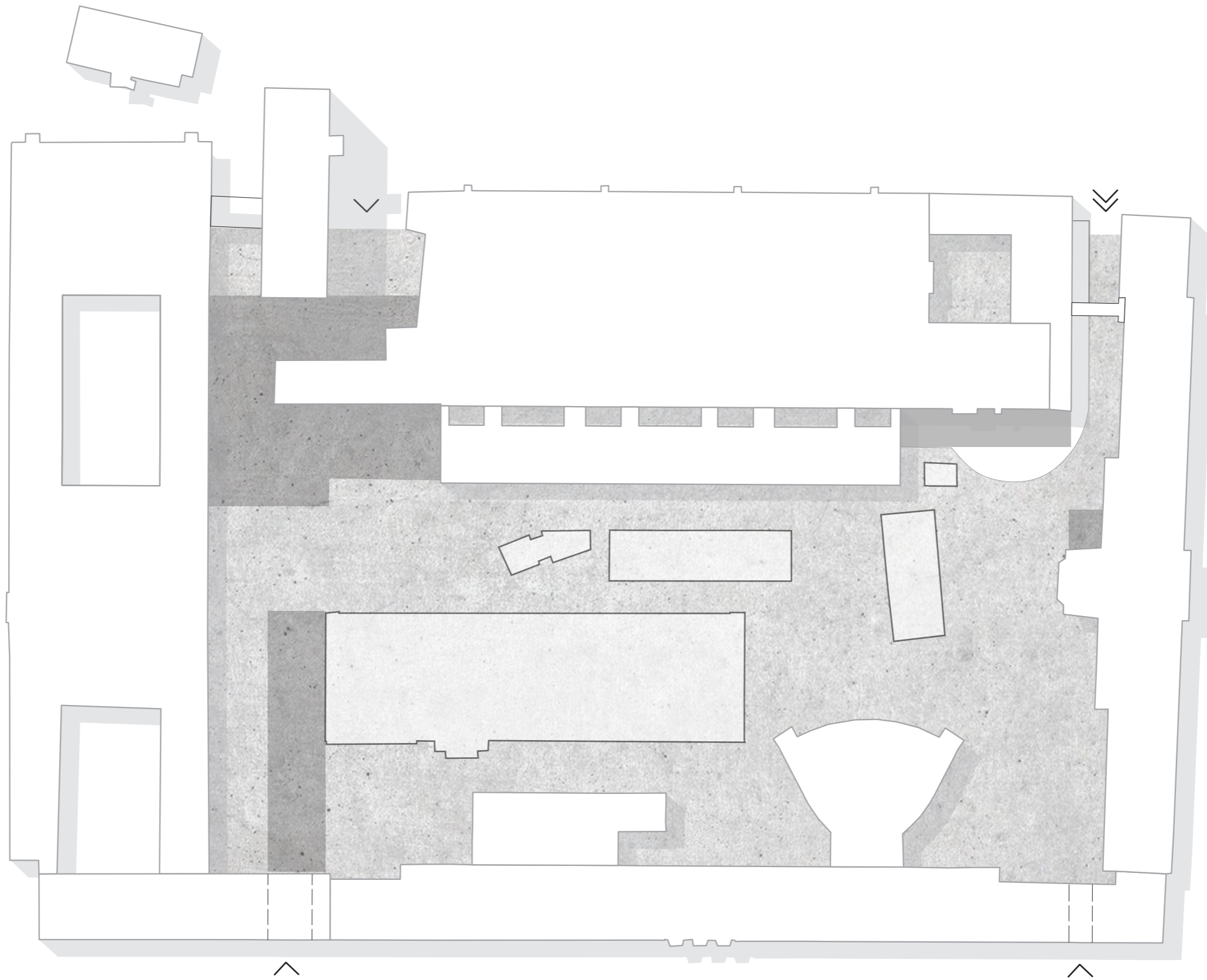








-  buildings STU
-  objects in the vicinity
-  sanitized objects in the design
-  public transport stops

m 1:2500 **BROADER RELATIONSHIP** 





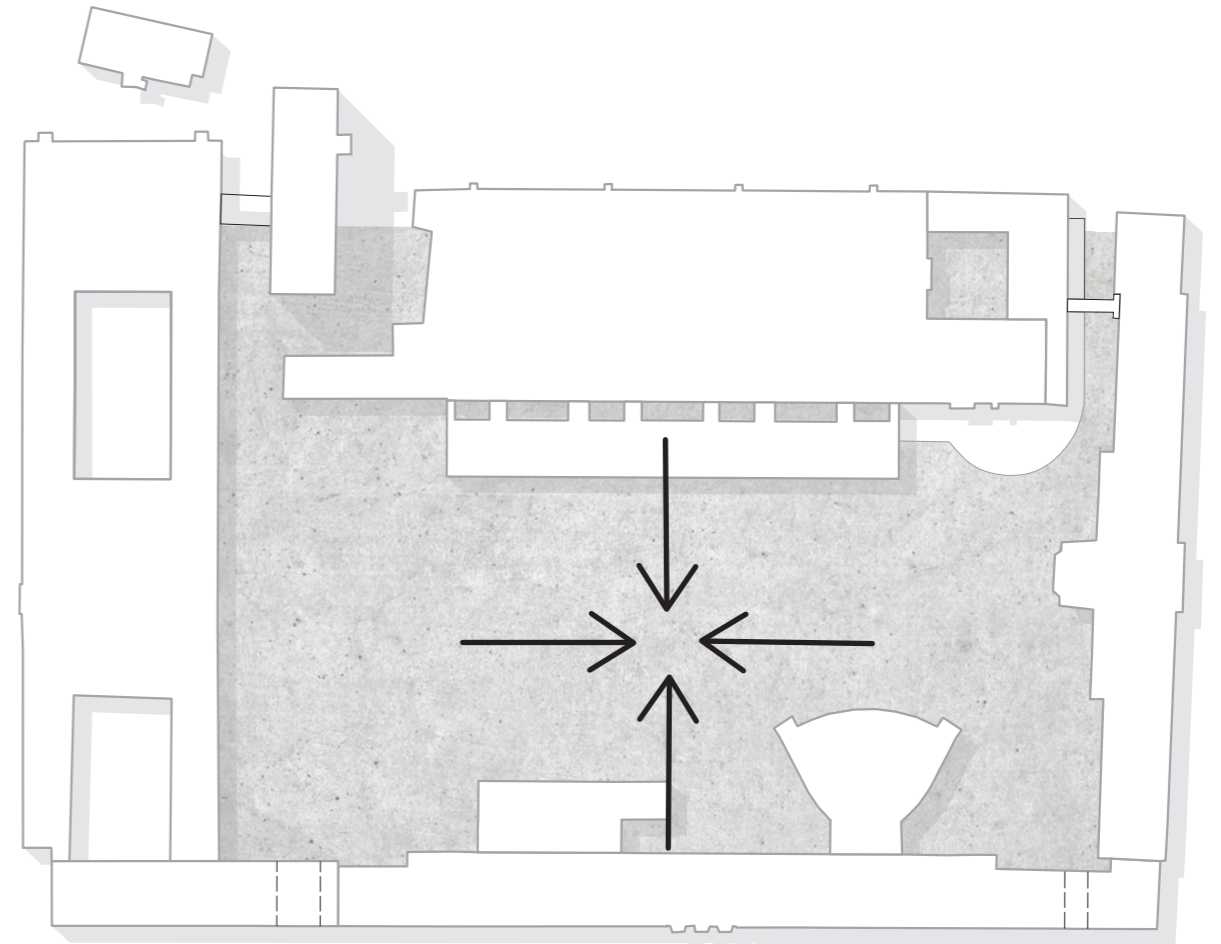
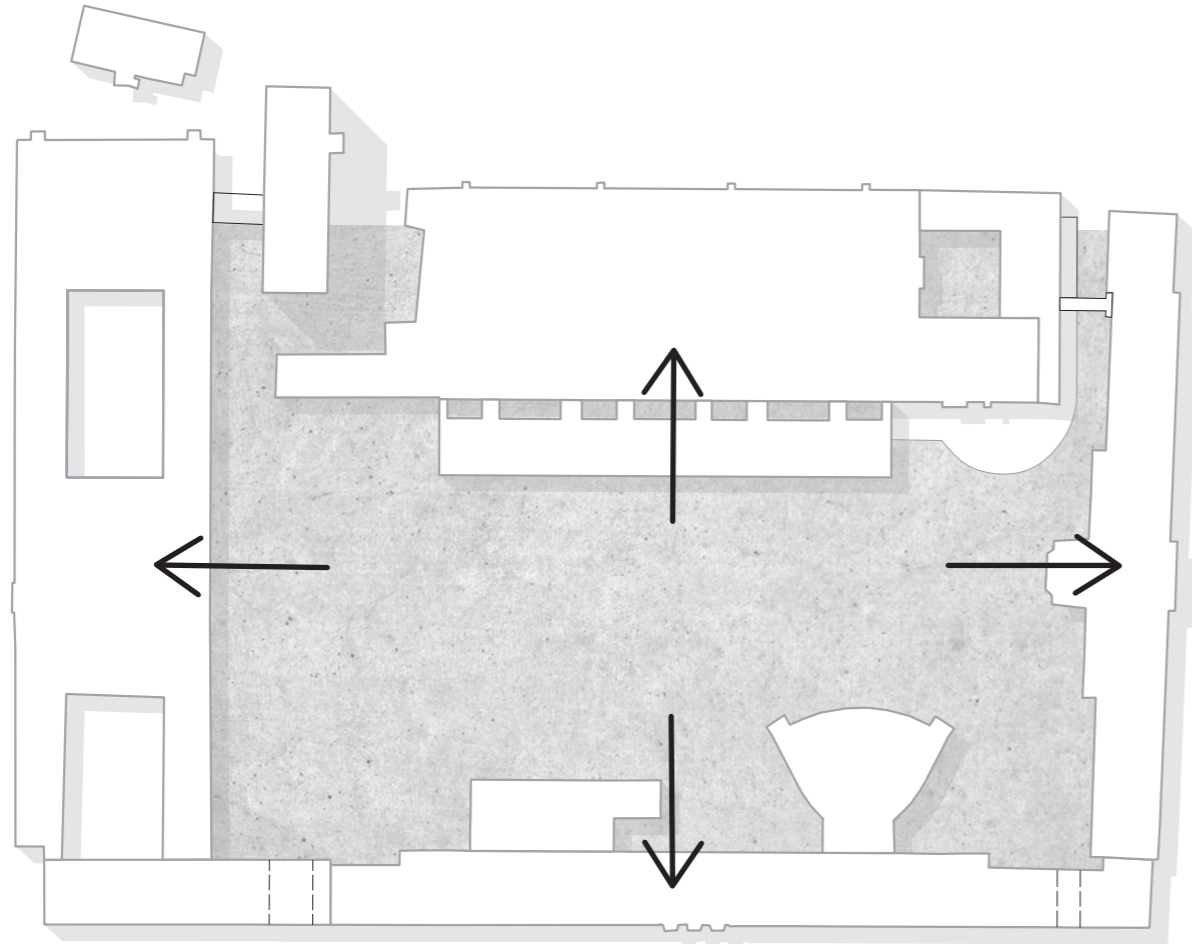
 entrance for cars  
 pedestrian entrance

m 1:1500

CURRENT STATUS



 sanitized objects  
 static traffic areas

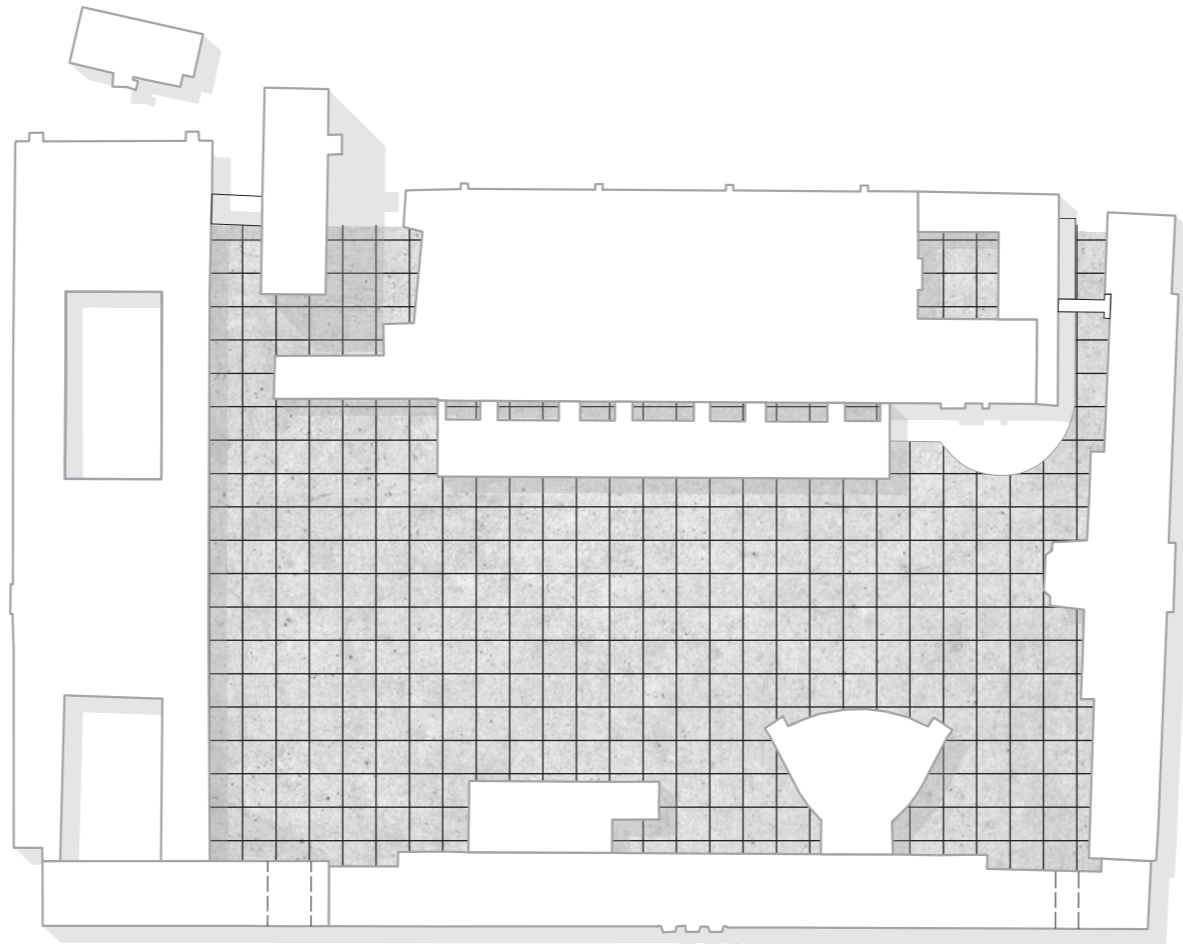
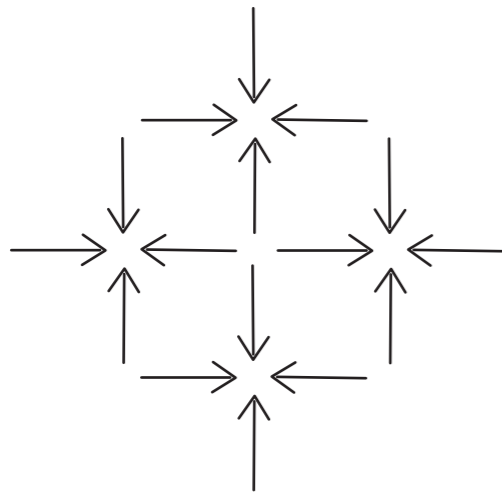


**CONNECTION**

faculties emit introverted signals without being interconnected,  
the new intention is to interconnect them also thanks to the new building.

CONCEPT



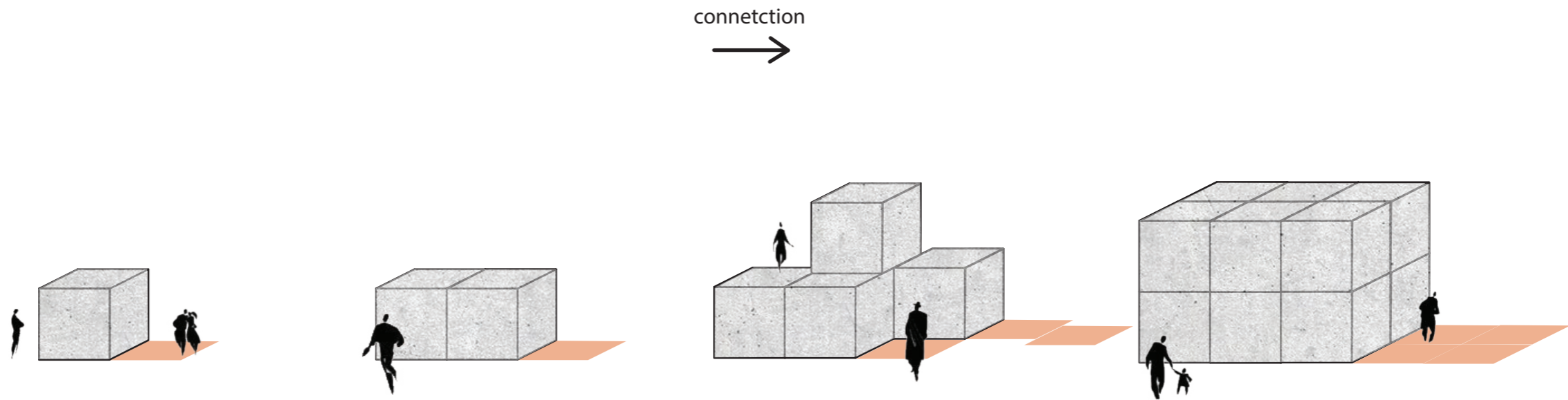


**CONNECTION**

net 8,1 x 8,1 m

CONCEPT





connetction



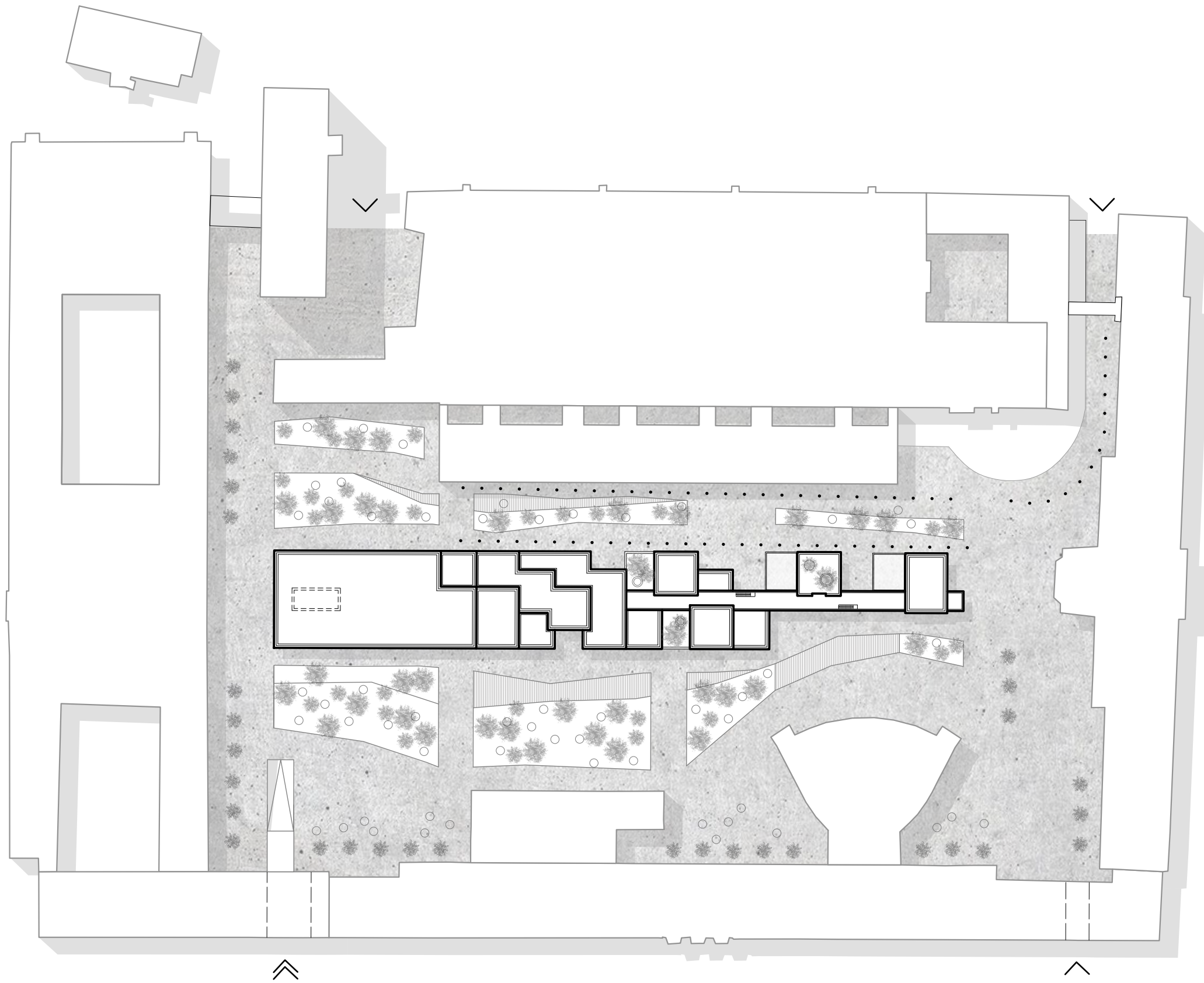
disintegration



**CONNECTION**

an effort to create a whole from individual pieces

CONCEPT



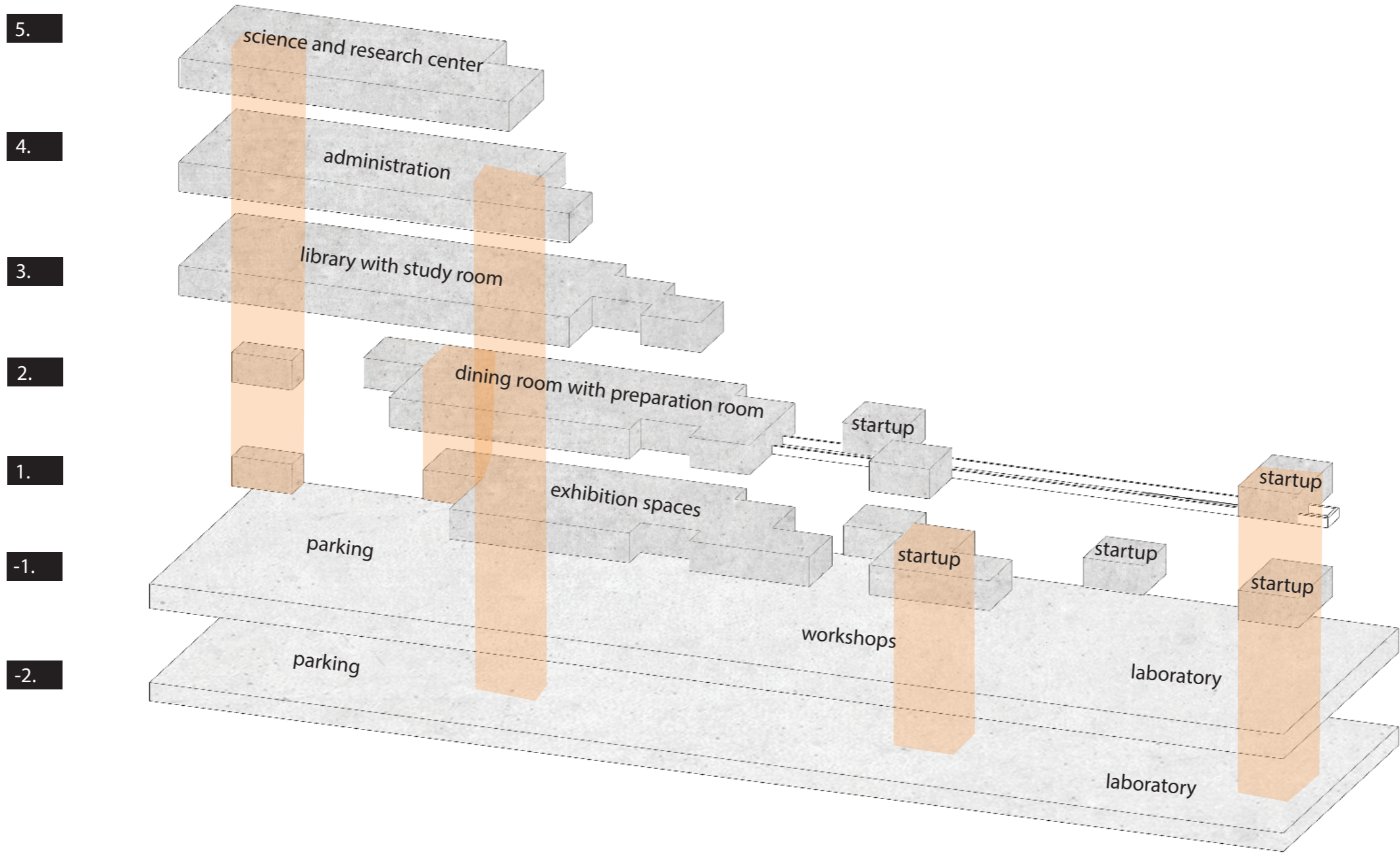
- ⤴ entrance for cars
- ⤵ pedestrian entrance
- • • moving sidewalk
- ☼ grown greenery

m 1:1000

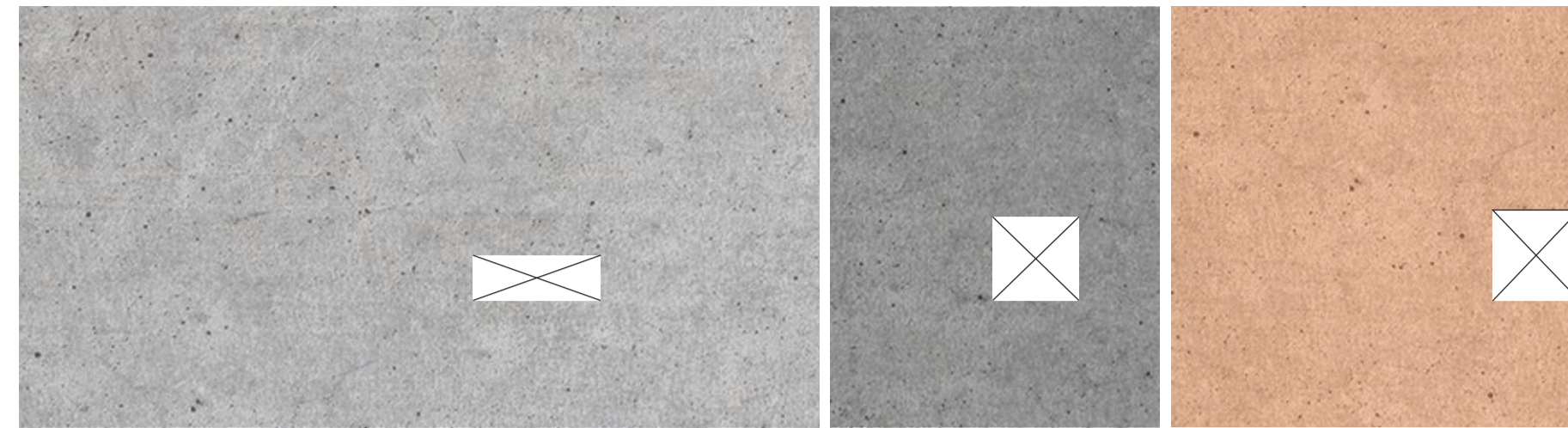
### SITUATION



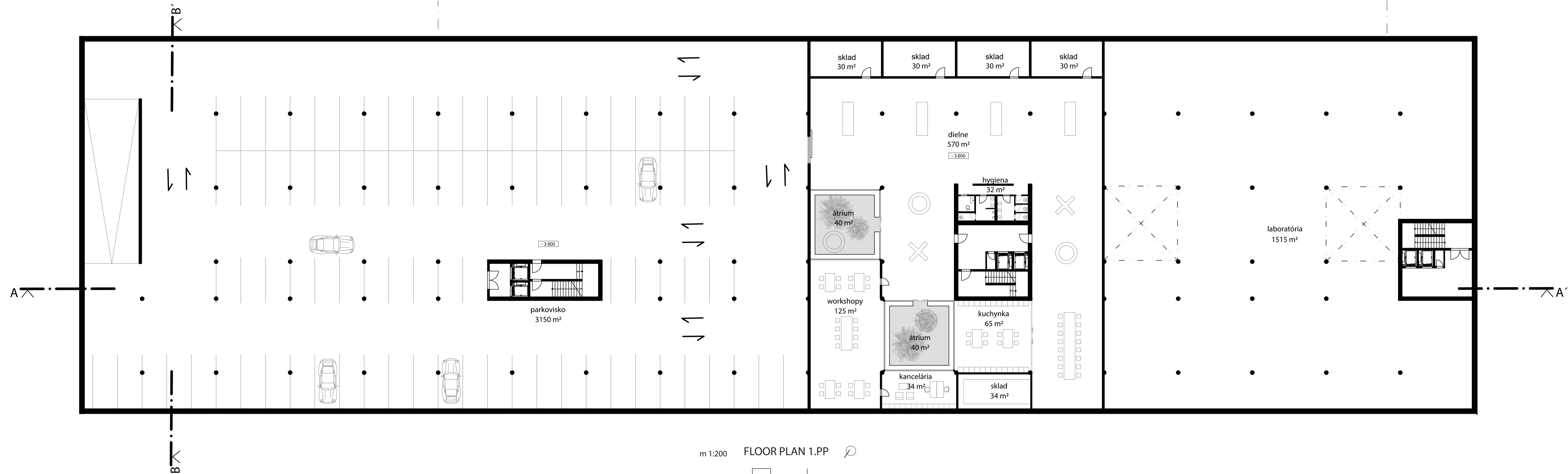
- solved object
- surrounding objects
- paved surfaces - concrete paving
- paved surfaces - wooden tiles
- lawns



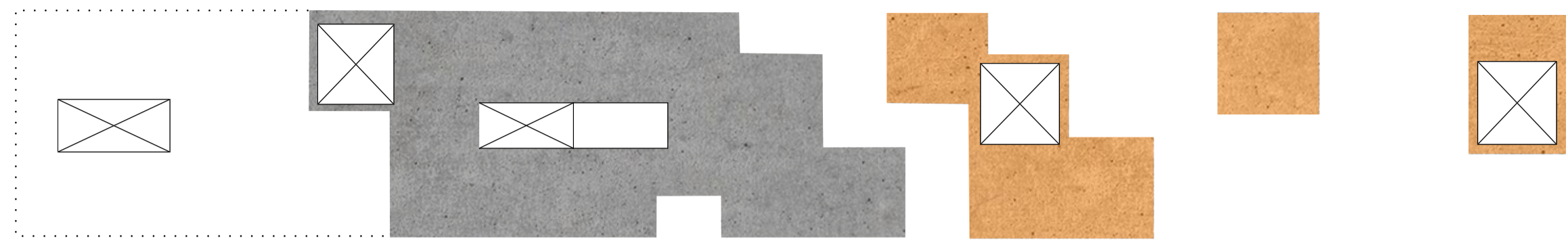
DISTRIBUTION OF FUNCTIONS



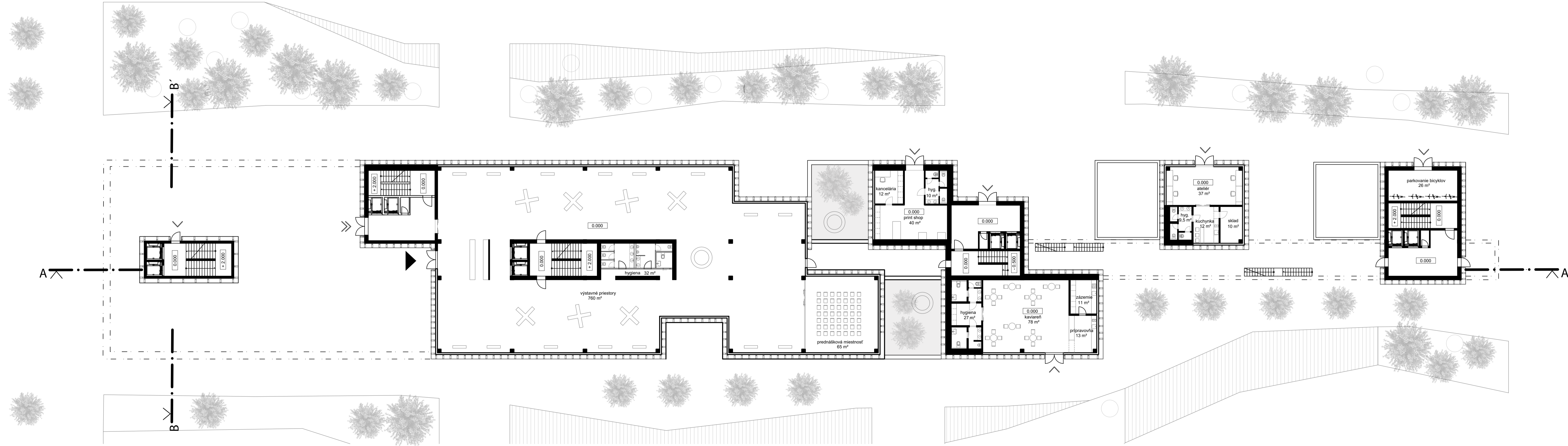
- parking - 87
- laboratory
- workshops



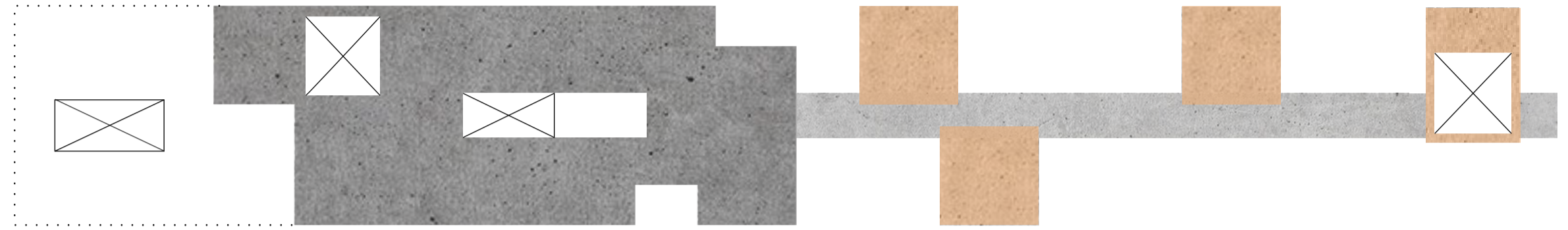
m 1:200 FLOOR PLAN 1.PP  
 0 2 6m



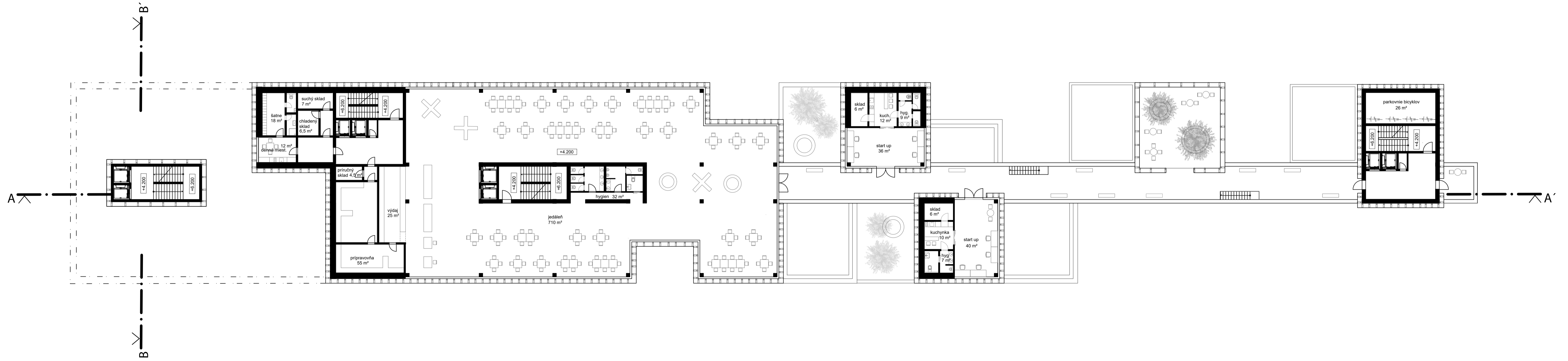
exhibition space  
 start up



m 1:200 FLOOR PLAN 1.NP  
 0 2 6m



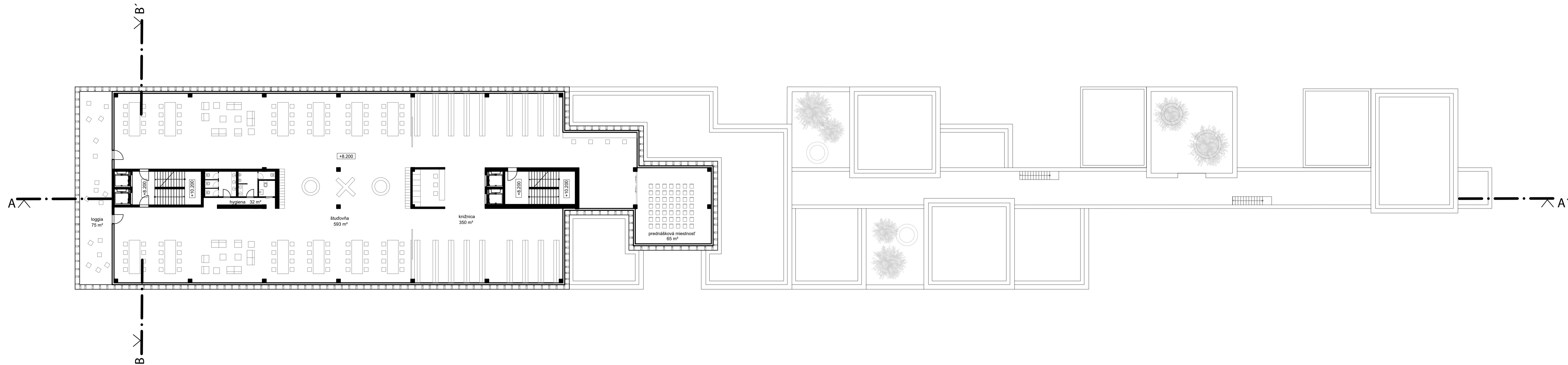
dining room  
 start up  
 footbridge



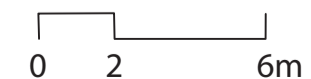
m 1:200 FLOOR PLAN 2.NP

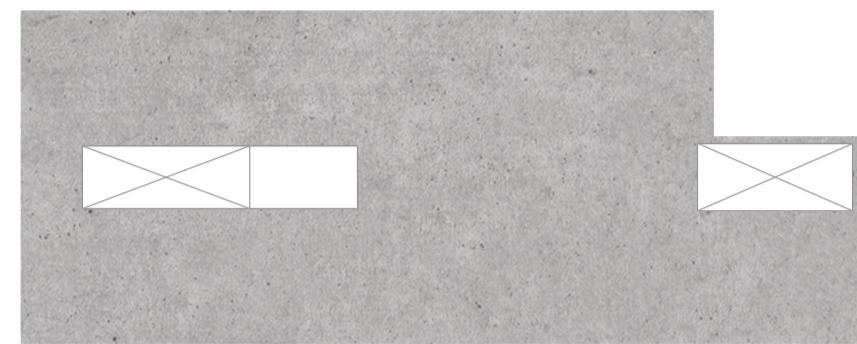


library with study room

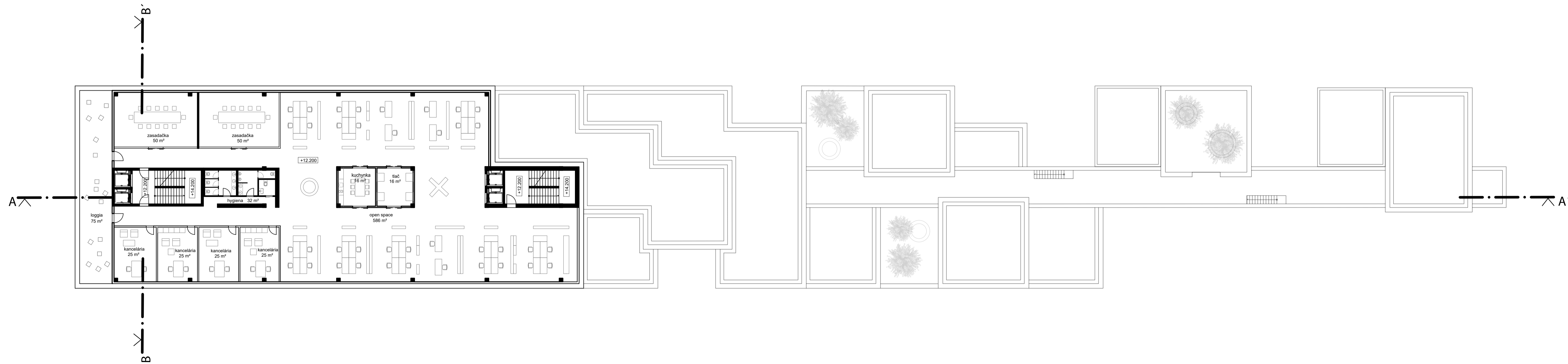


m 1:200 FLOOR PLAN 3.NP

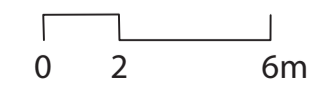


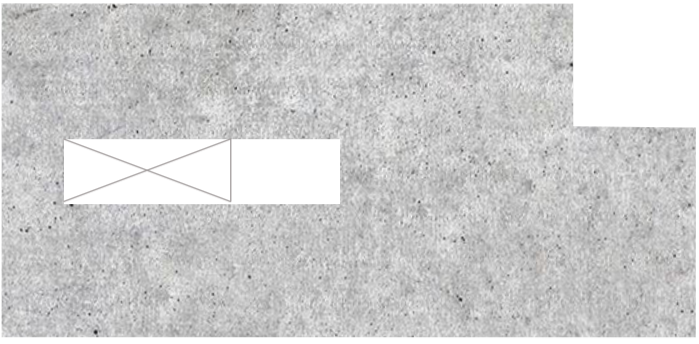


administration

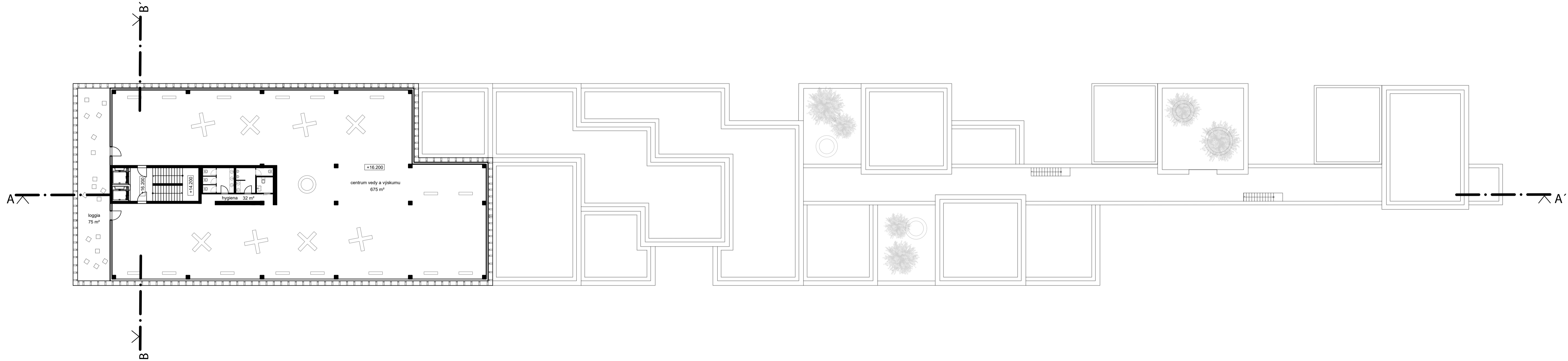


m 1:200 FLOOR PLAN 4.NP

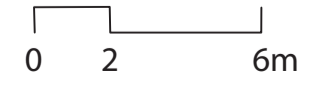


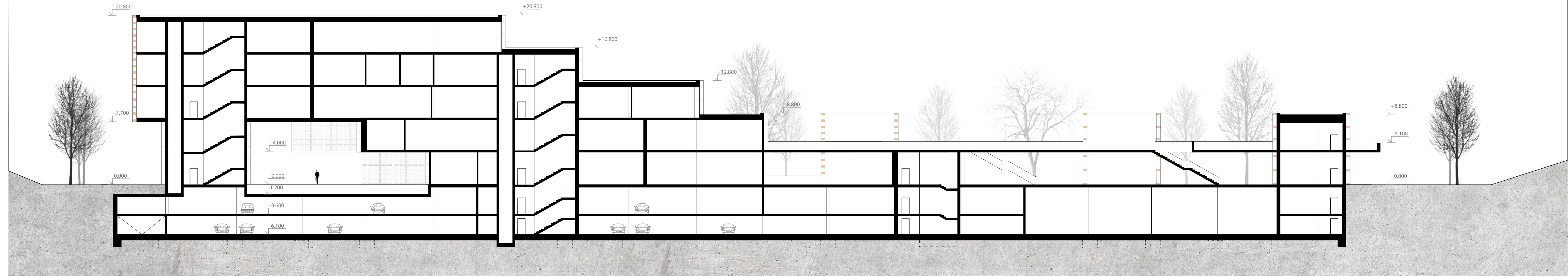


science and research presentation center

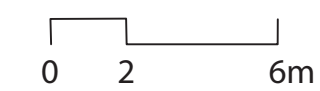


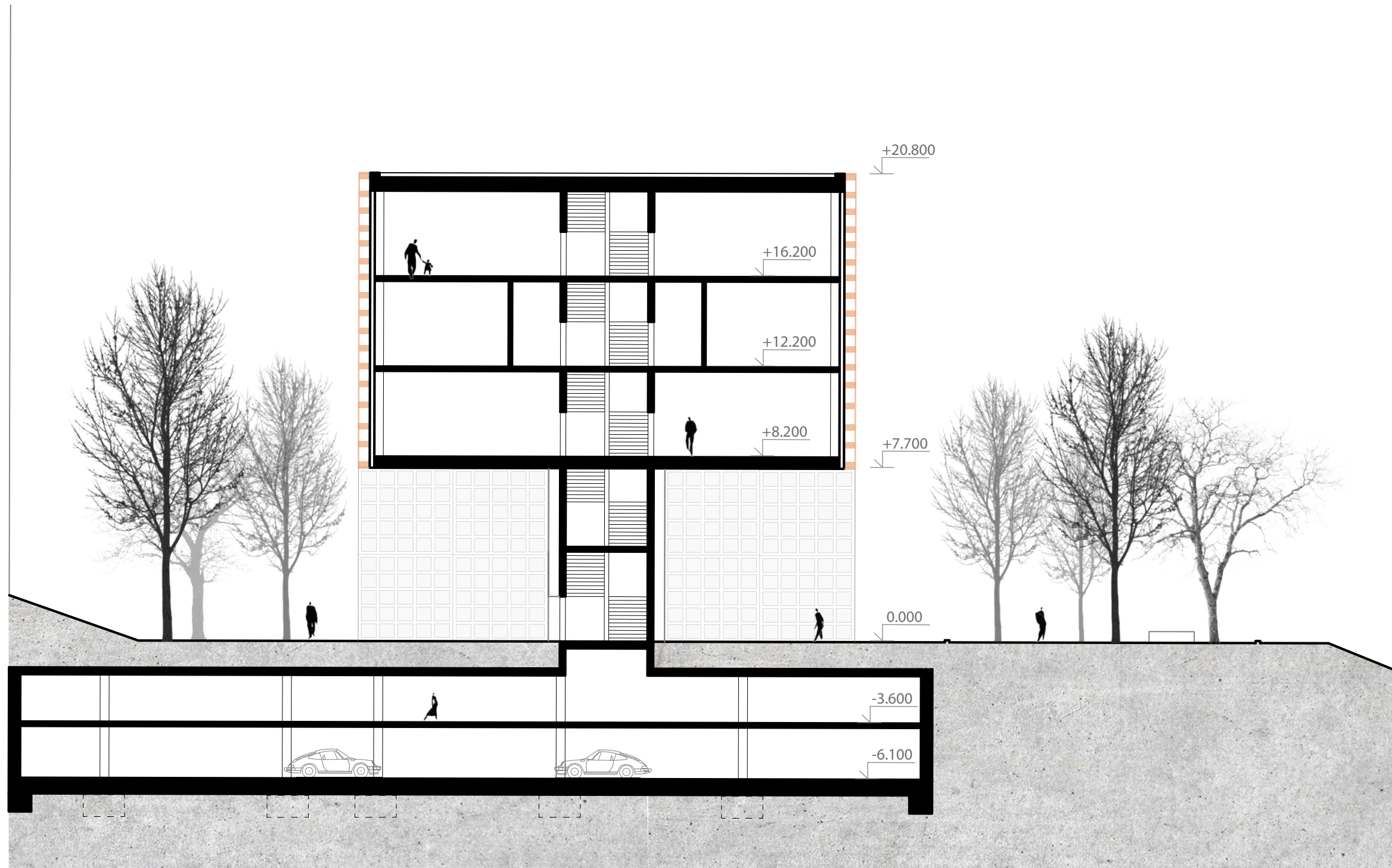
m 1:200 FLOOR PLAN 5.NP



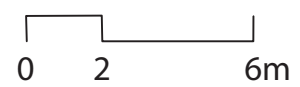


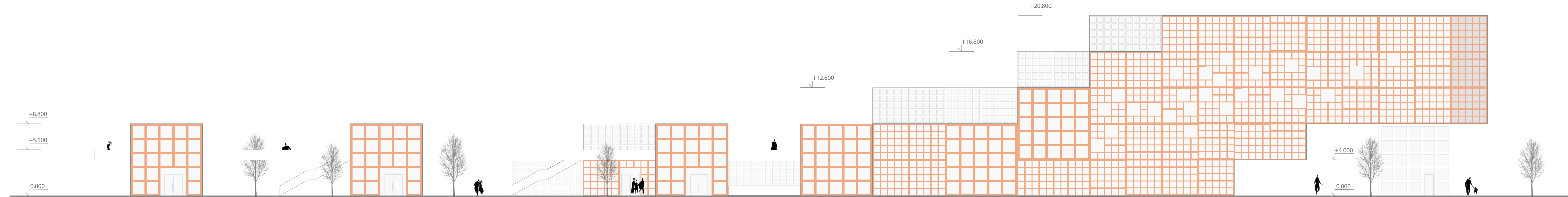
m 1:200 SECTION A - A'



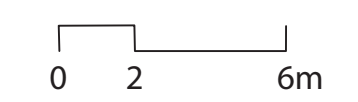


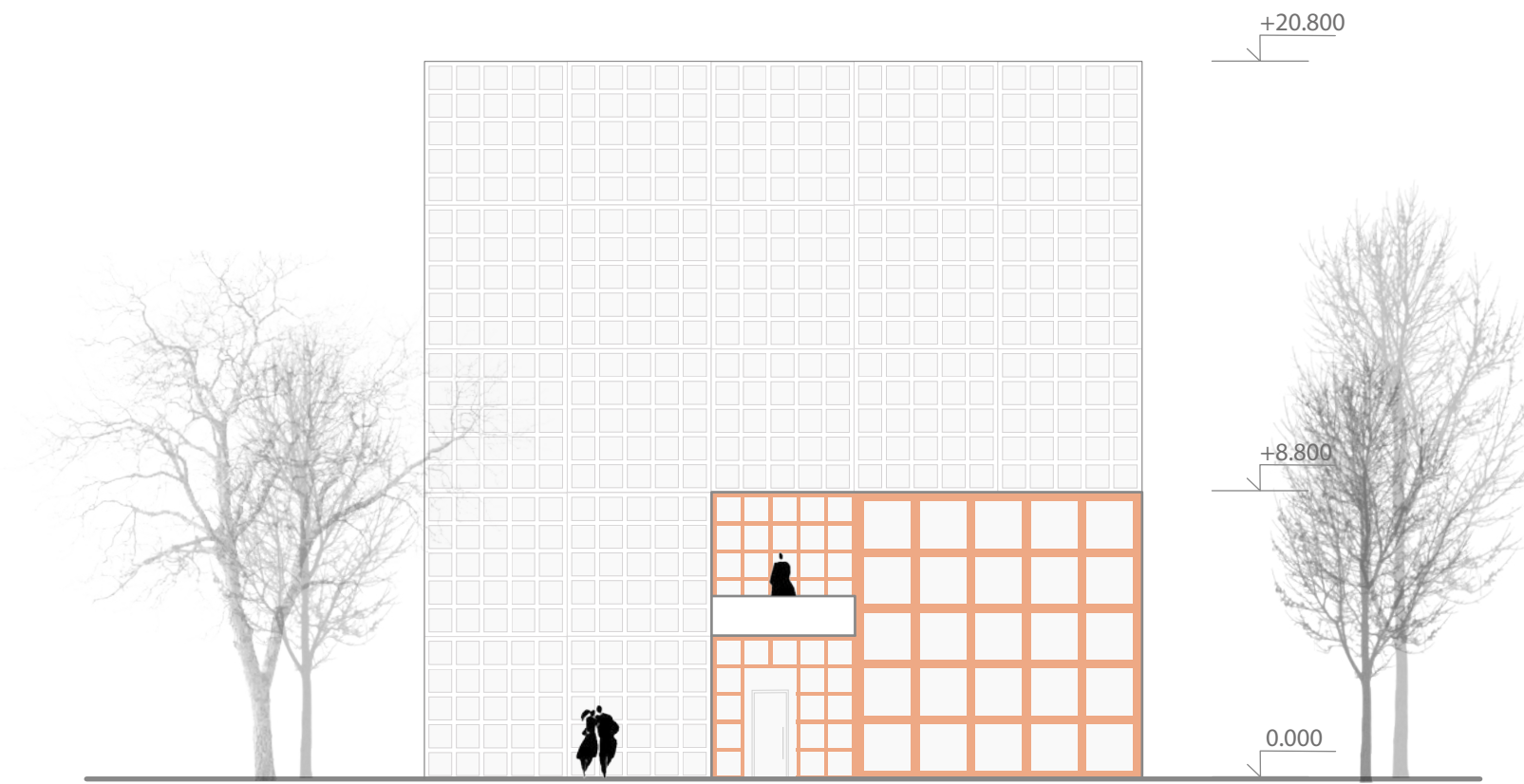
m 1:200 SECTION B - B'



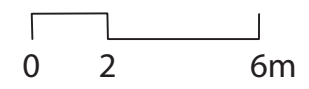


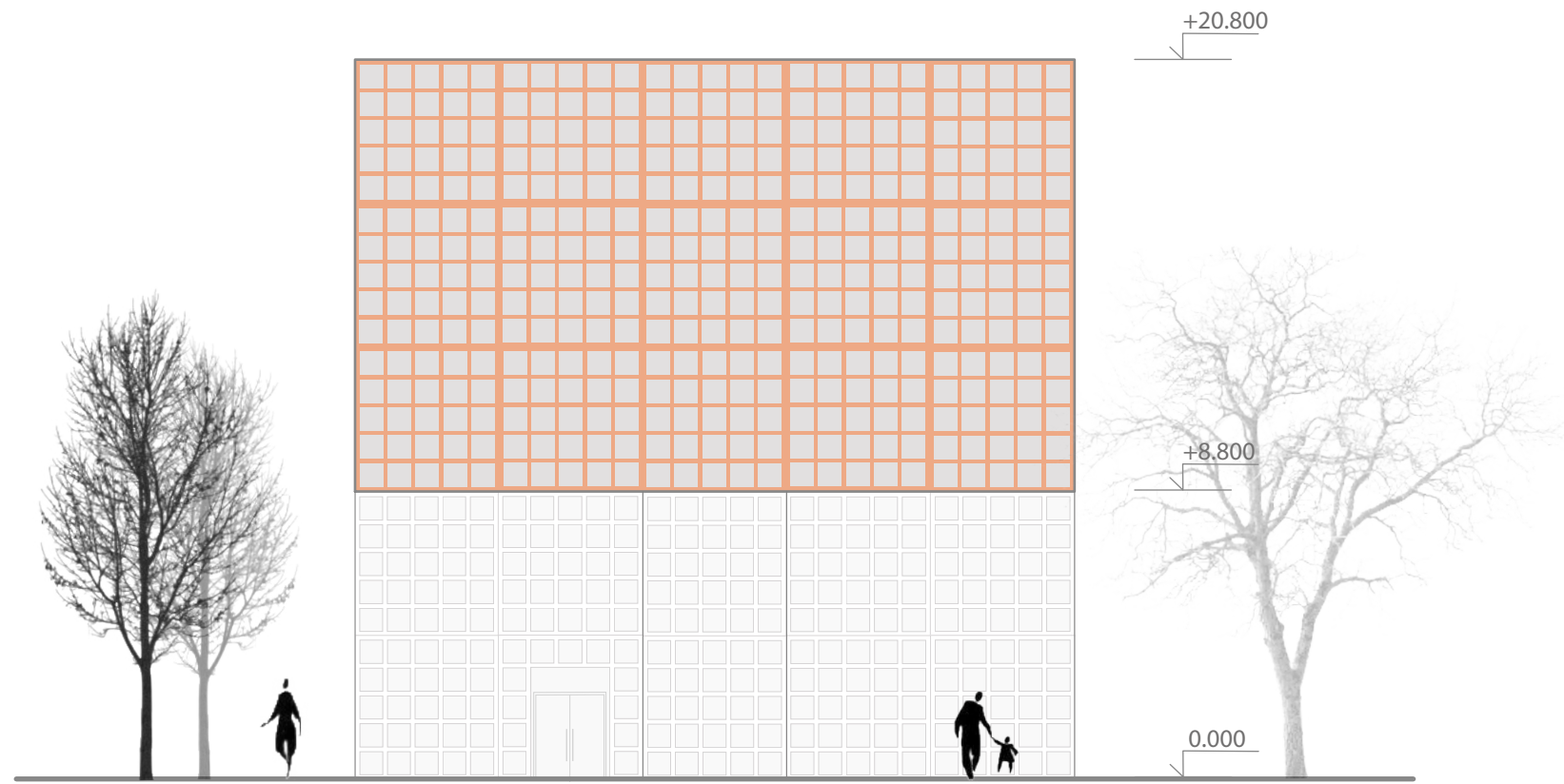
m 1:200 VIEW southeast



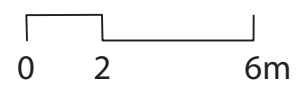


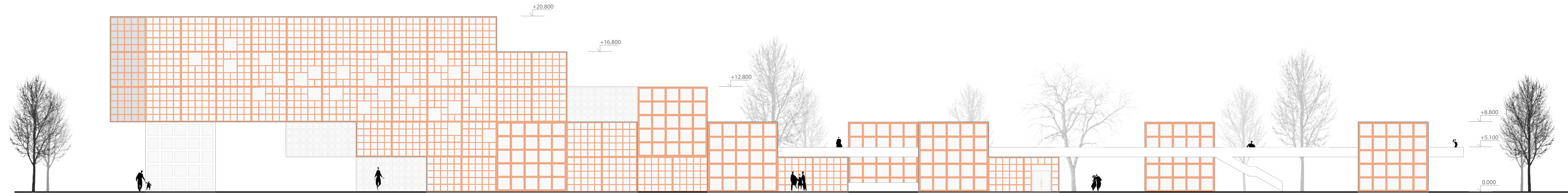
m 1:200 VIEW southwest



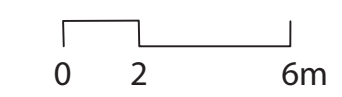


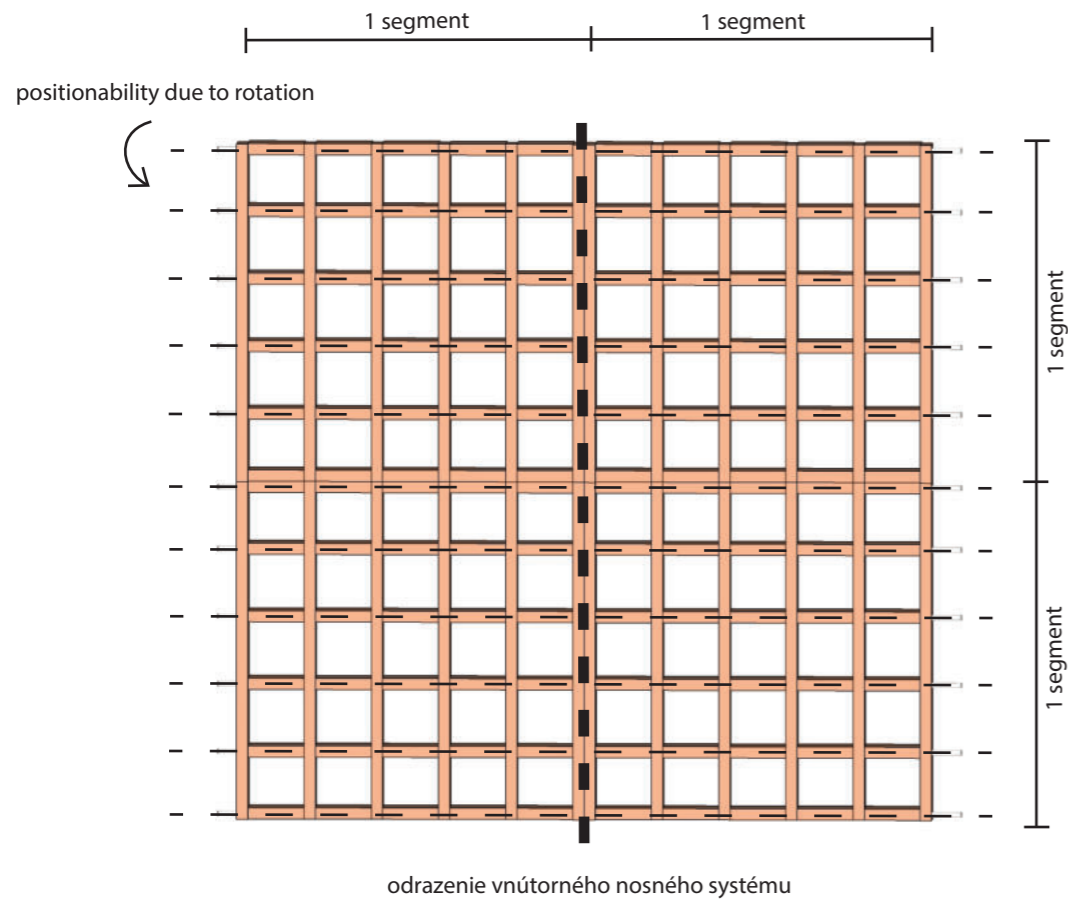
m 1:200 VIEW northeast



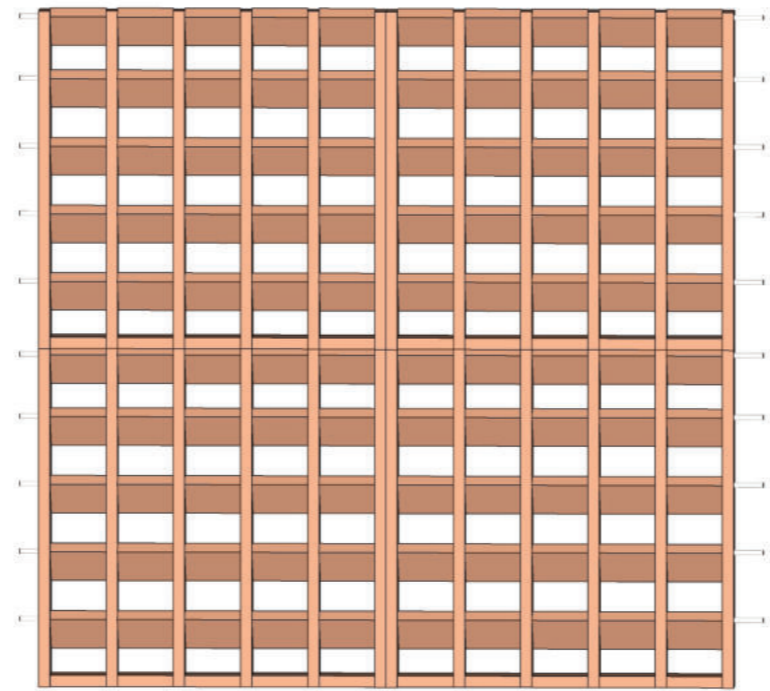


m 1:200 VIEW northwest

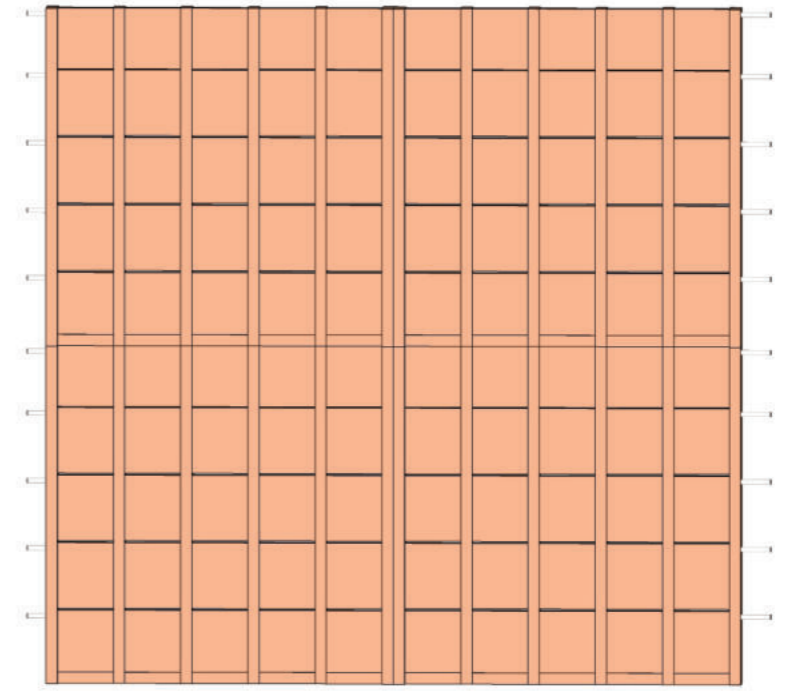




open mode



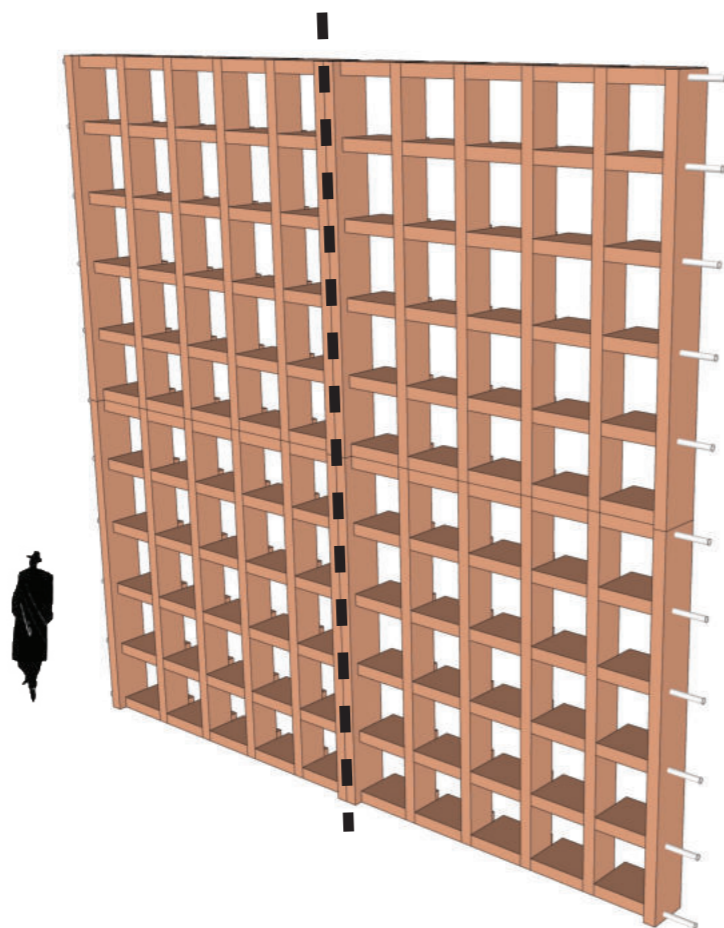
semi-closed mode



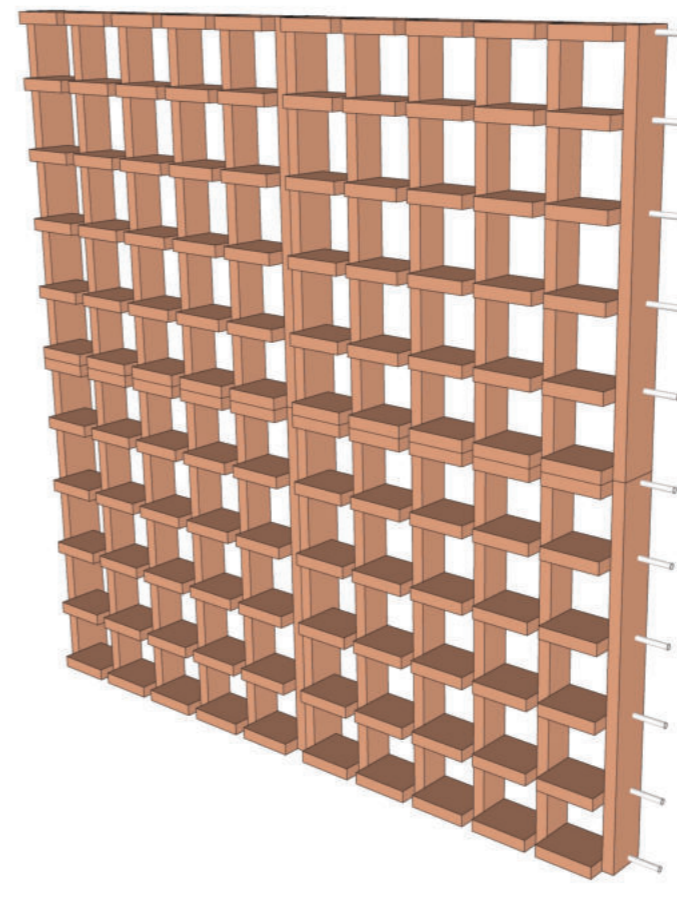
closed mode

FACADE CONCEPT

reflection of the internal support system  
= slightly raised vertical part



exterior view



view from the interior

Following the pattern of the surrounding facades, it is subtly marked on the new facade load-bearing system of the building and at the same time the diversity of thicknesses of the parts themselves is used individual segments. The facade has a two-tone design. The main views are formed in a brick shade which carries a reference to the color design of the original facade from the rehabilitated laboratory building. This main color is complemented by non-contrasting white.

## FACADE CONCEPT