

**INFO SERVICE AREA**





**INFO SERVICE AREA**



**INFO SERVICE AREA**

A high-angle, wide shot of a modern, multi-level atrium. The space is characterized by its clean, white architecture and curved balconies with glass railings. In the center, a circular meeting area is furnished with several black office chairs and a curved table with laptops. Below this, a large, vibrant green living wall is set within a wooden planter. In the background, a library with bookshelves is visible through an open-plan layout. The lighting is bright and even, highlighting the architectural details and the greenery.

**INFO SERVICE AREA**

# CAFÉ & LOUNGE





**CAFÉ & LOUNGE**



**2<sup>ND</sup> FLOOR**



**LIBRARY**



**LIBRARY**



**LIBRARY**

A modern library computer lab with white desks, black chairs, and large windows. The room features a curved wall of floor-to-ceiling windows on the right side, providing a view of the outdoors. The desks are arranged in rows, each equipped with a white Apple iMac computer, a keyboard, and a mouse. Black office chairs are positioned at the desks. In the background, there are bookshelves and a large white cylindrical pillar. The overall design is clean and minimalist.

**LIBRARY**



**MEETING ROOM**



**MEETING ROOM**



**CLASSROOM**

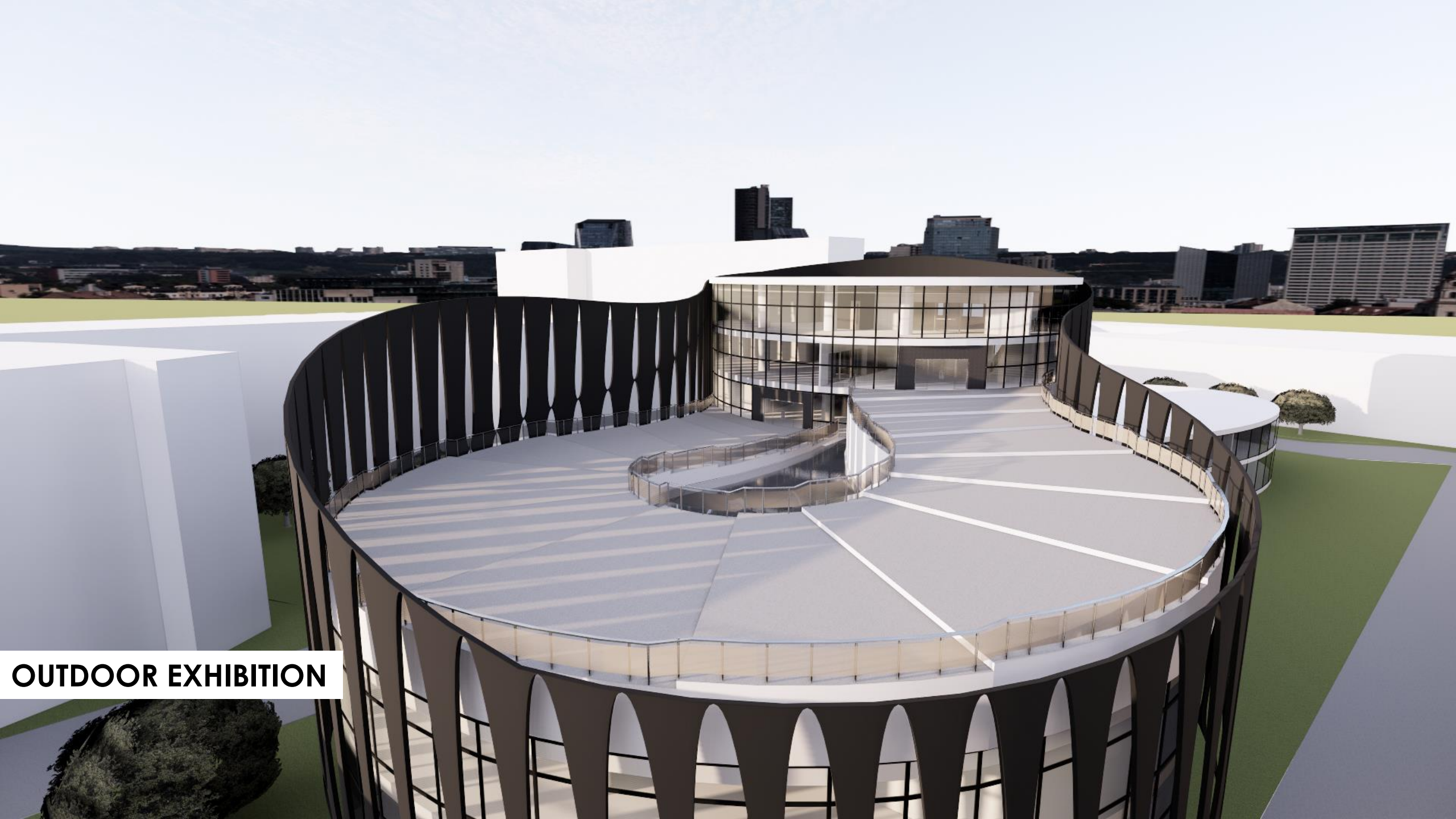


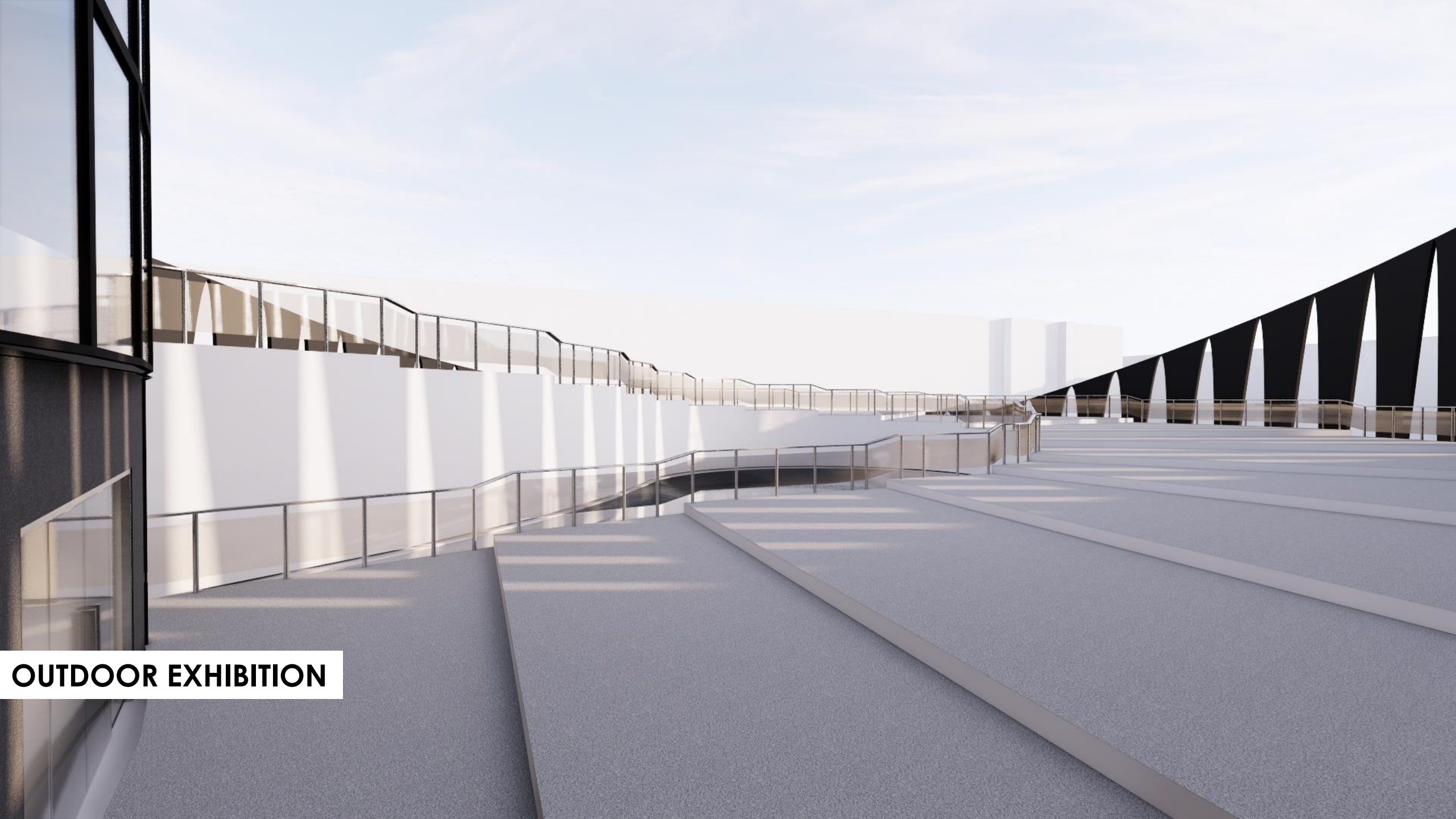
**CLASSROOM**



**WORKSHOP**

**OUTDOOR EXHIBITION**



An architectural rendering of an outdoor exhibition space. The scene features a wide, paved walkway on the left, bordered by a glass railing. To the right, there are several tiers of wide, light-colored concrete steps or seating. In the background, a long, white wall with a glass railing runs across the frame. To the right of this wall, a series of black, triangular structures are visible, possibly part of a larger architectural design. The sky is a clear, light blue with some wispy clouds. The overall atmosphere is bright and modern.

**OUTDOOR EXHIBITION**