

stu bratislava

information

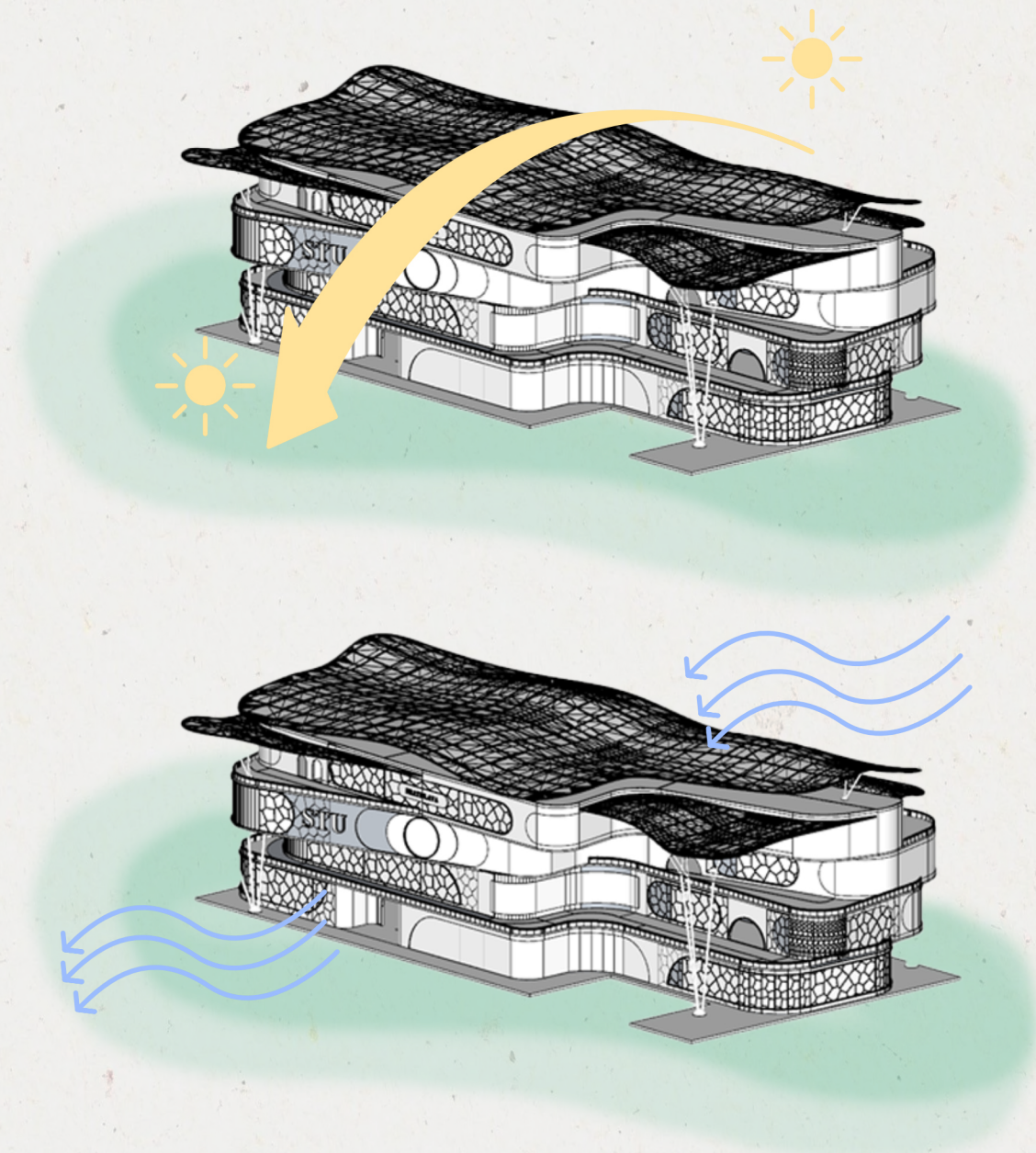
STU Bratislava is a University of Technology in Bratislava, Slovakia. It is often seen as the landmark of the city because it's located at the heart of the city and because of that the design must be aesthetically pleasing and not become a building noise to its surrounding City.

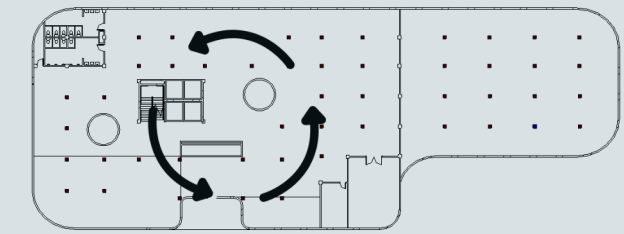
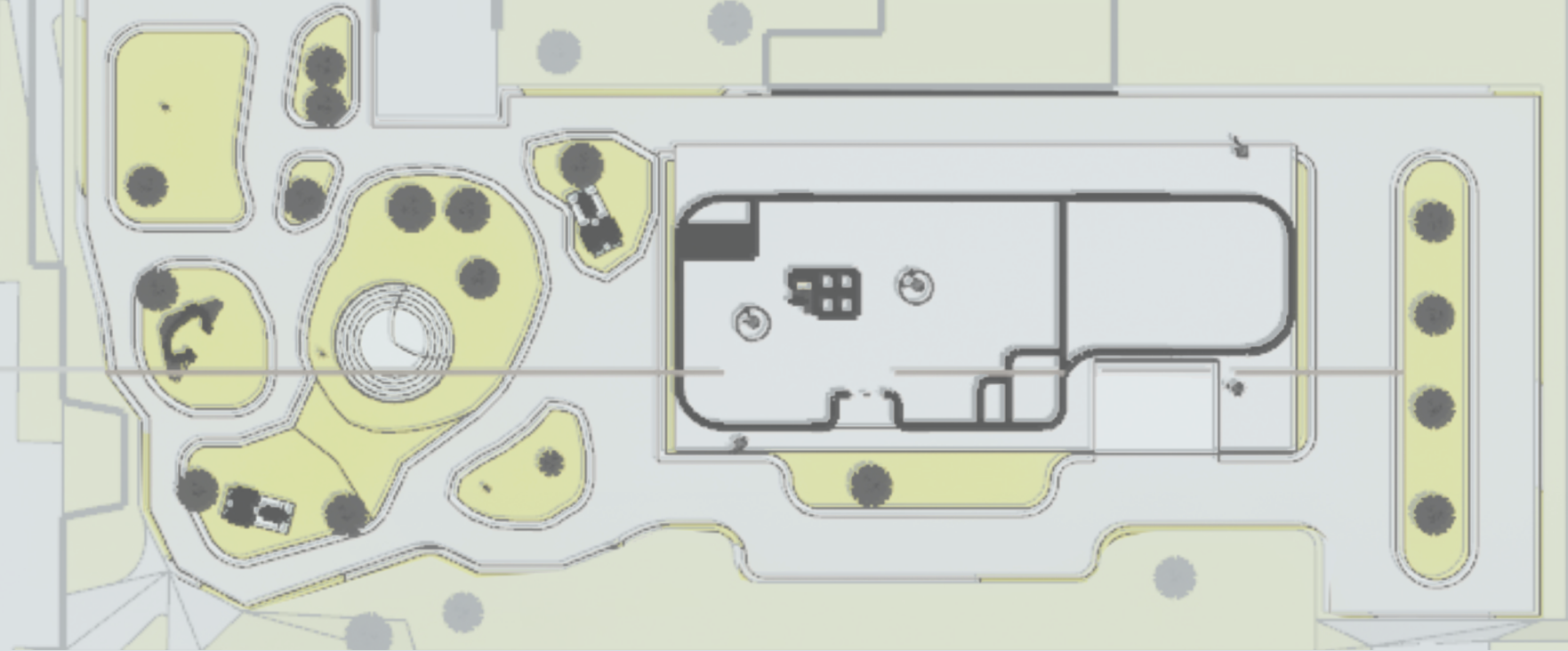
CLIMATE

According to the data achieved, Bratislava has the average temperature where it will reach 21°C on the warmest season and -1°C on the coldest seasons.

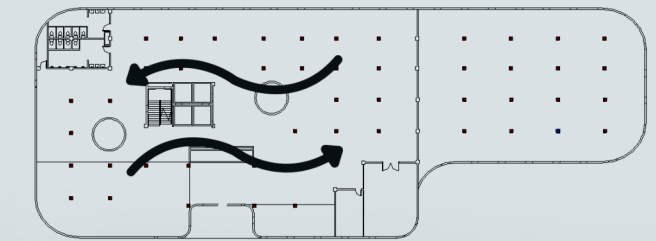
SUN AND WIND

We design the building to adopt to its surrounding such as the sun light path and wind path. The windows and opening of the building are mostly faced according to the sun and wind path to maximize its benefits.

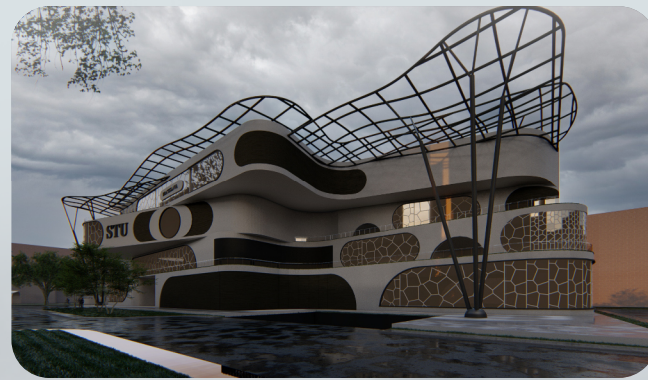




The concept centralized is picked because the university is built in the heart of Bratislava.



Paying attention to human interaction, we design one area to easily connect to other area to make human interaction easier

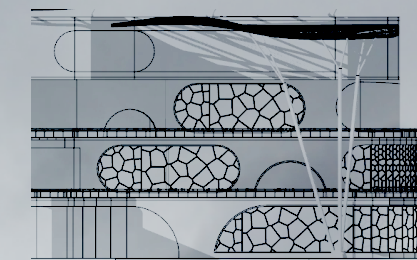


cen.re.know

CENTRAL · RELATION · KNOWLEDGE

Located at the heart of **Bratislava, Slovakia**, this university is designed with some concepts in mind such as centralized, connecting relations, and of course knowledge.

For the style and design of the building, we choose a more **contemporary** approach that are still **sustainable** for the environment that can be achieved using contemporary design style.



Knowledge is implemented in the pylon-structure that symbolized the tree of knowledge that will keep growing up and keep on learning



interior .concept

The interior space of the building have quite a clean and colorful ambience. This will not only brighten up the mood of those who are inside the building, but also develop a more creative thoughts.

The combination of whitescape interior and the colorful furniture insides will create an atmosphere with harmonise combination

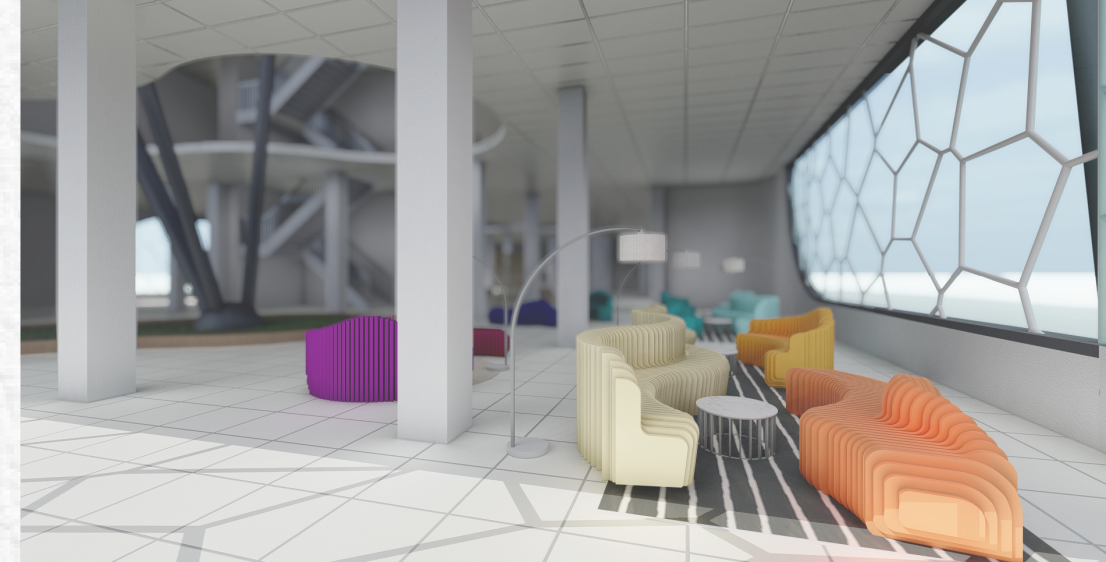
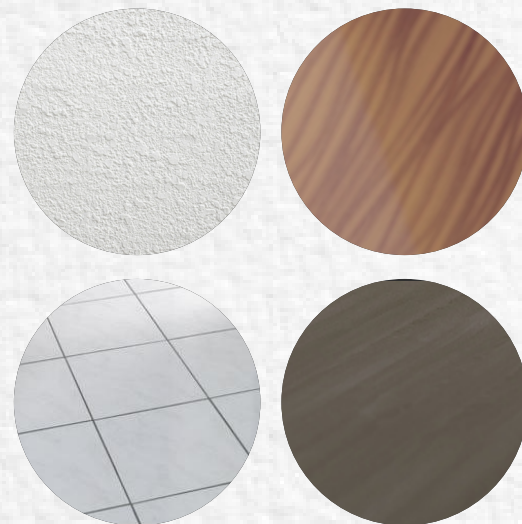
color palette.

We pick a couple of furniture with a pastel color pallete.



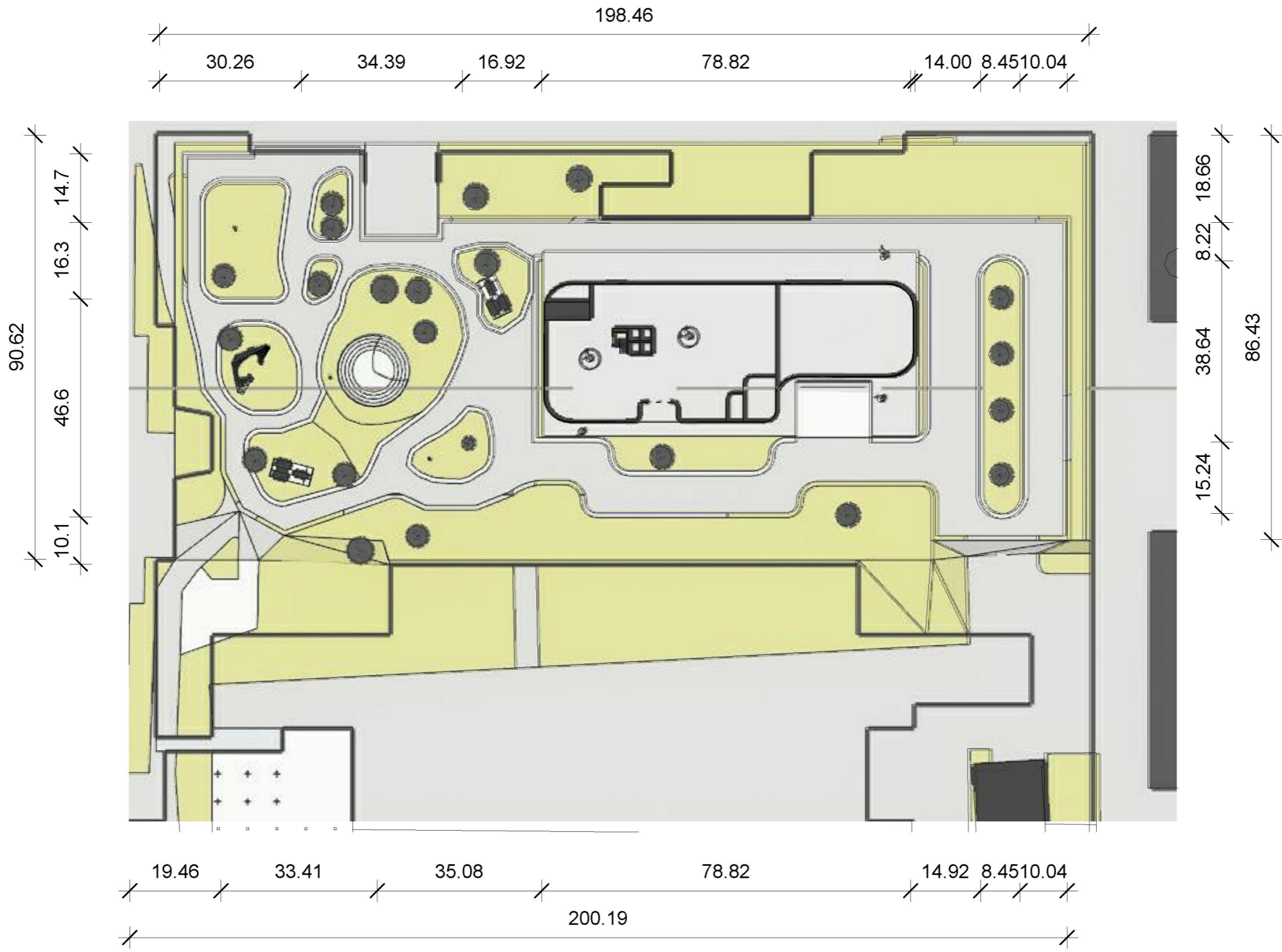
material choices.

Because the furnitures are already colorfull, we choose a softer material texture and color.

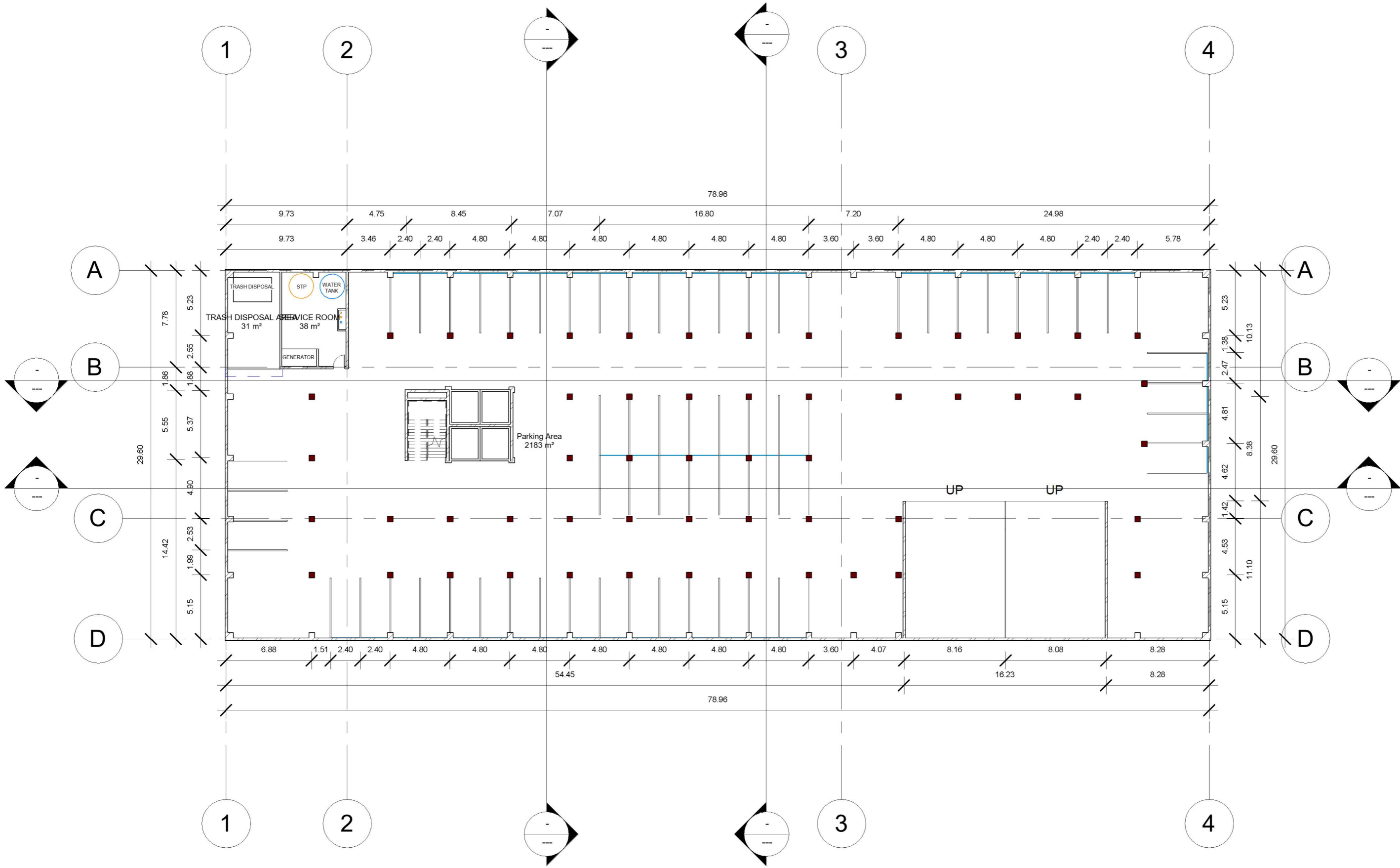




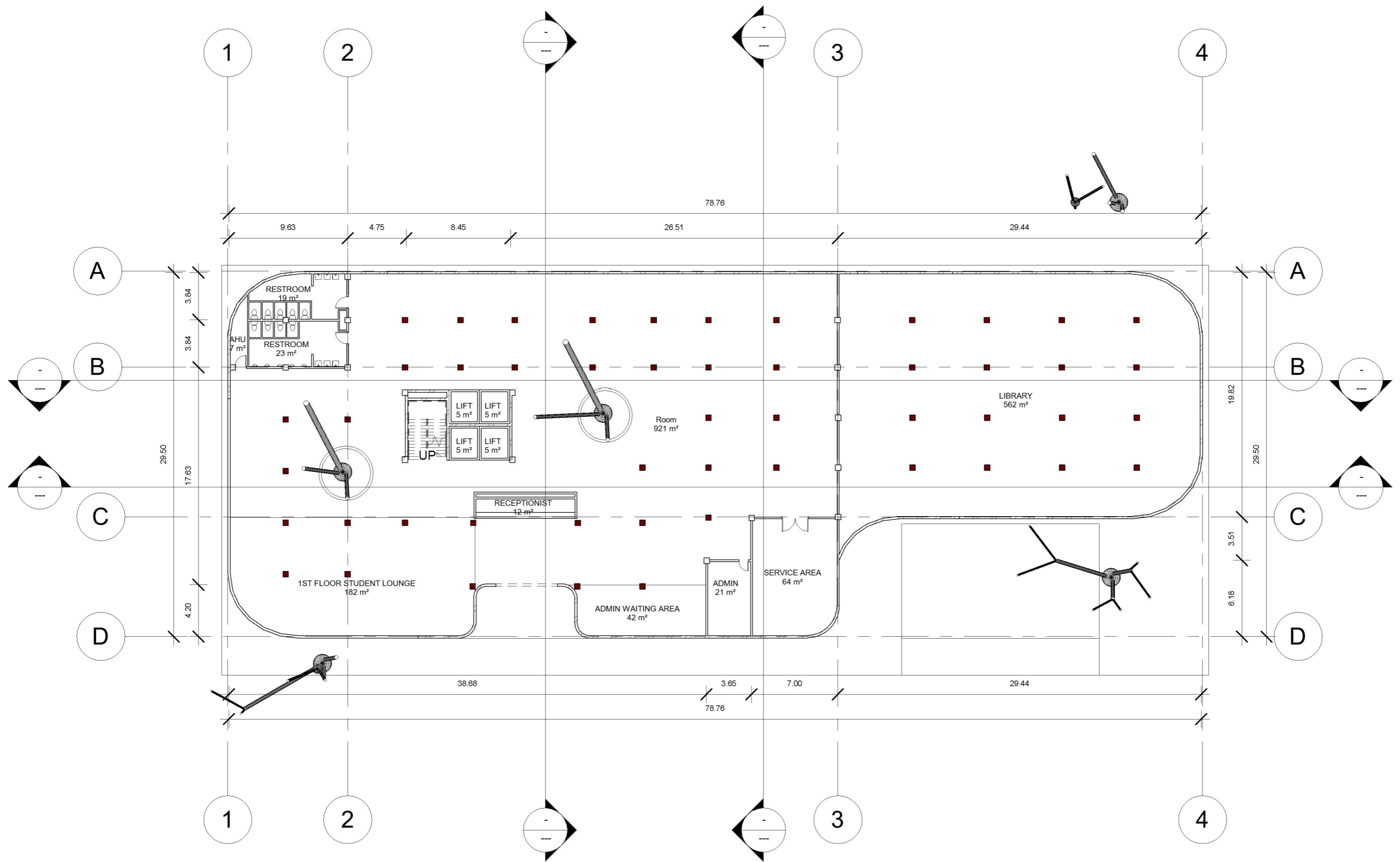
1 Siteplan
1 : 1000



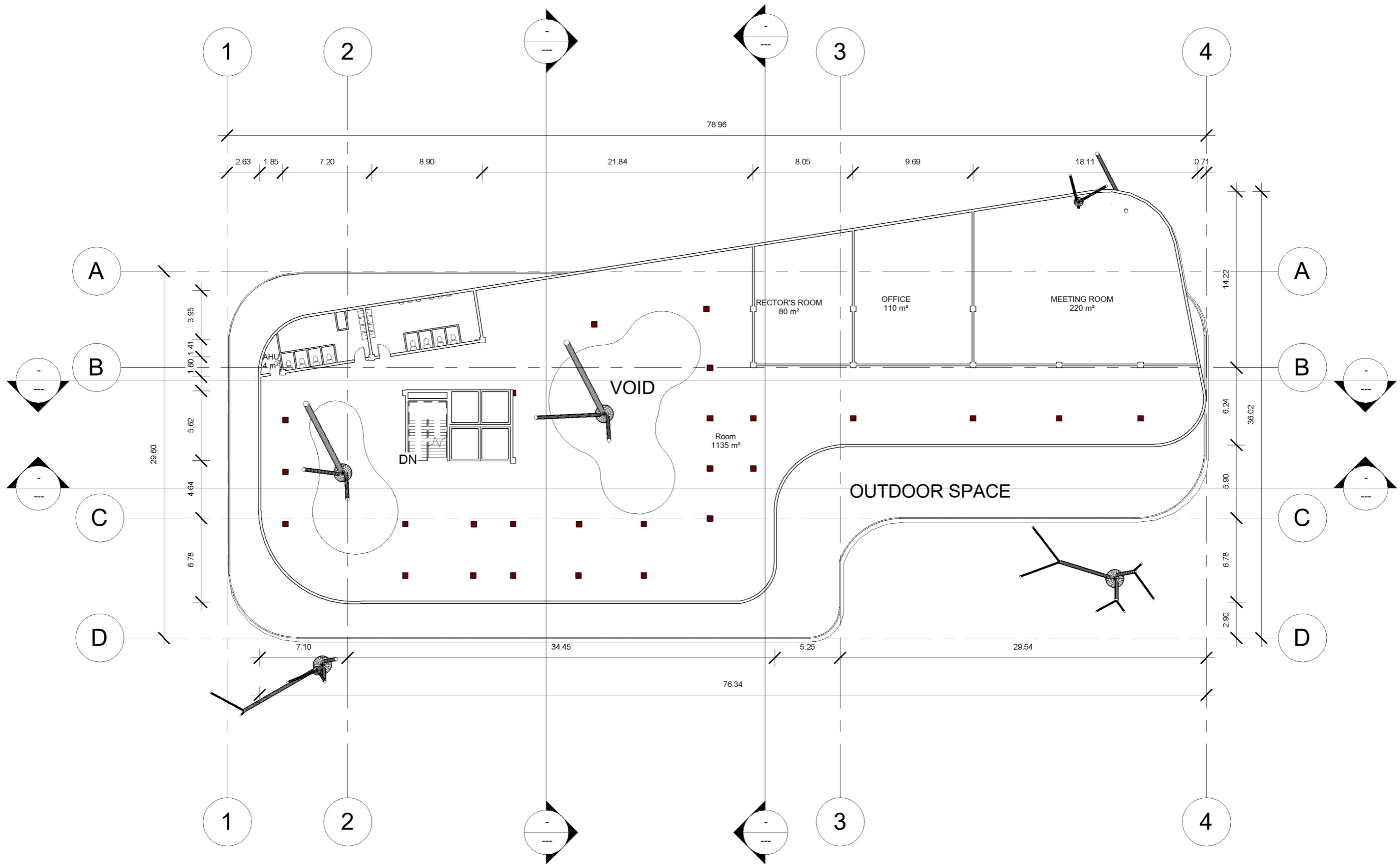
1 Layout
1 : 1000



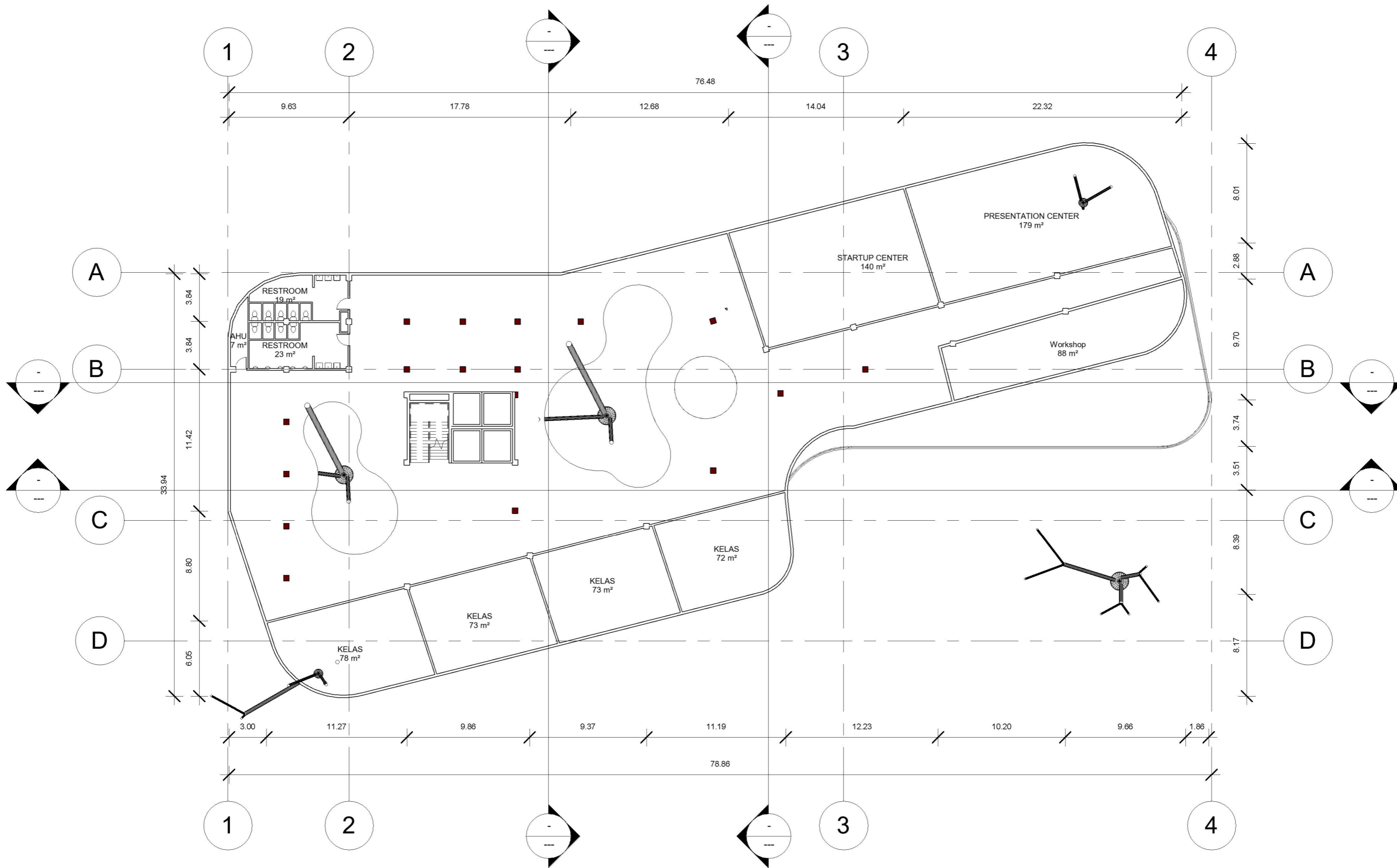
1 Floorplan Basement
1 : 300



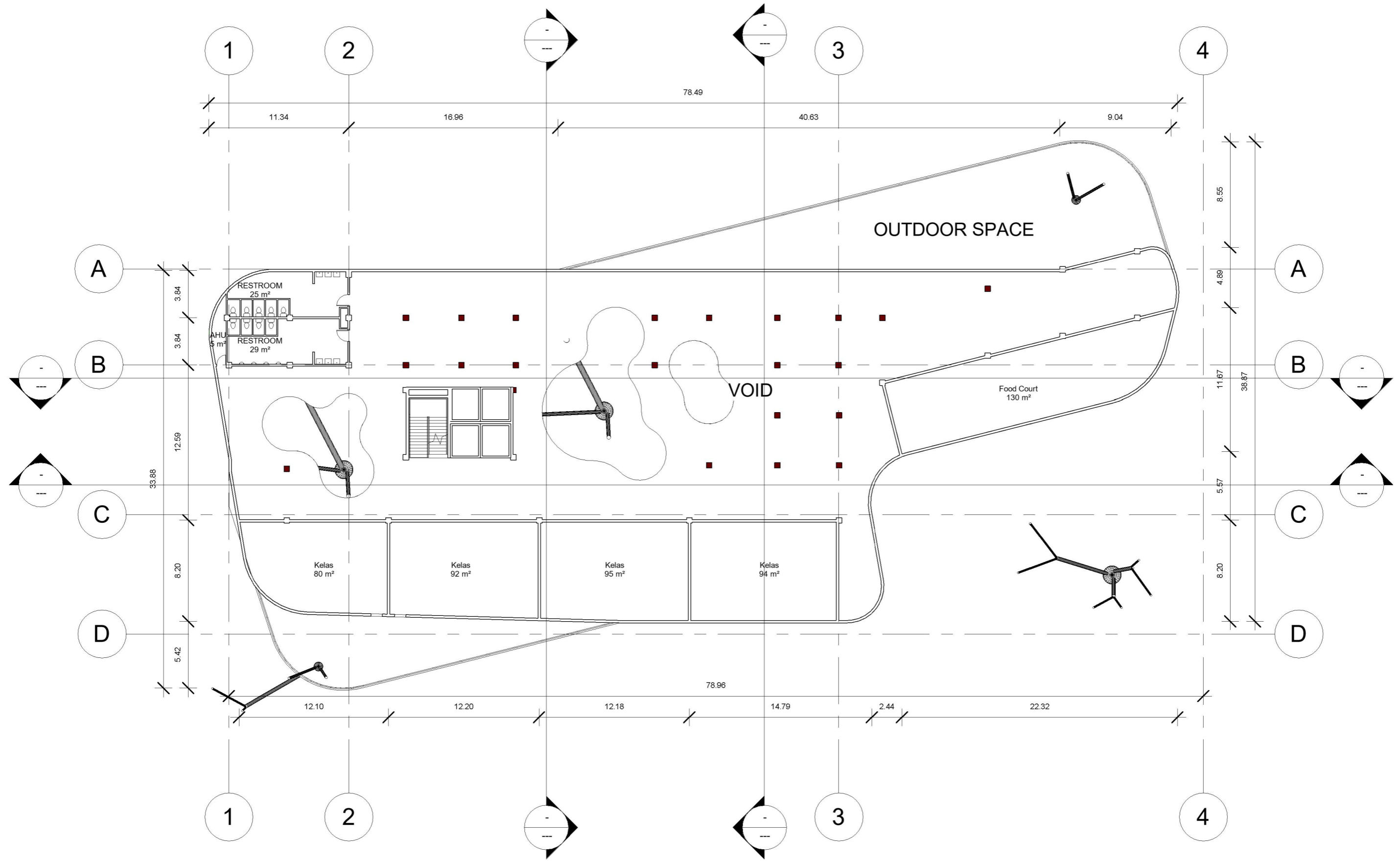
1 Floorplan Level 1
1 : 300



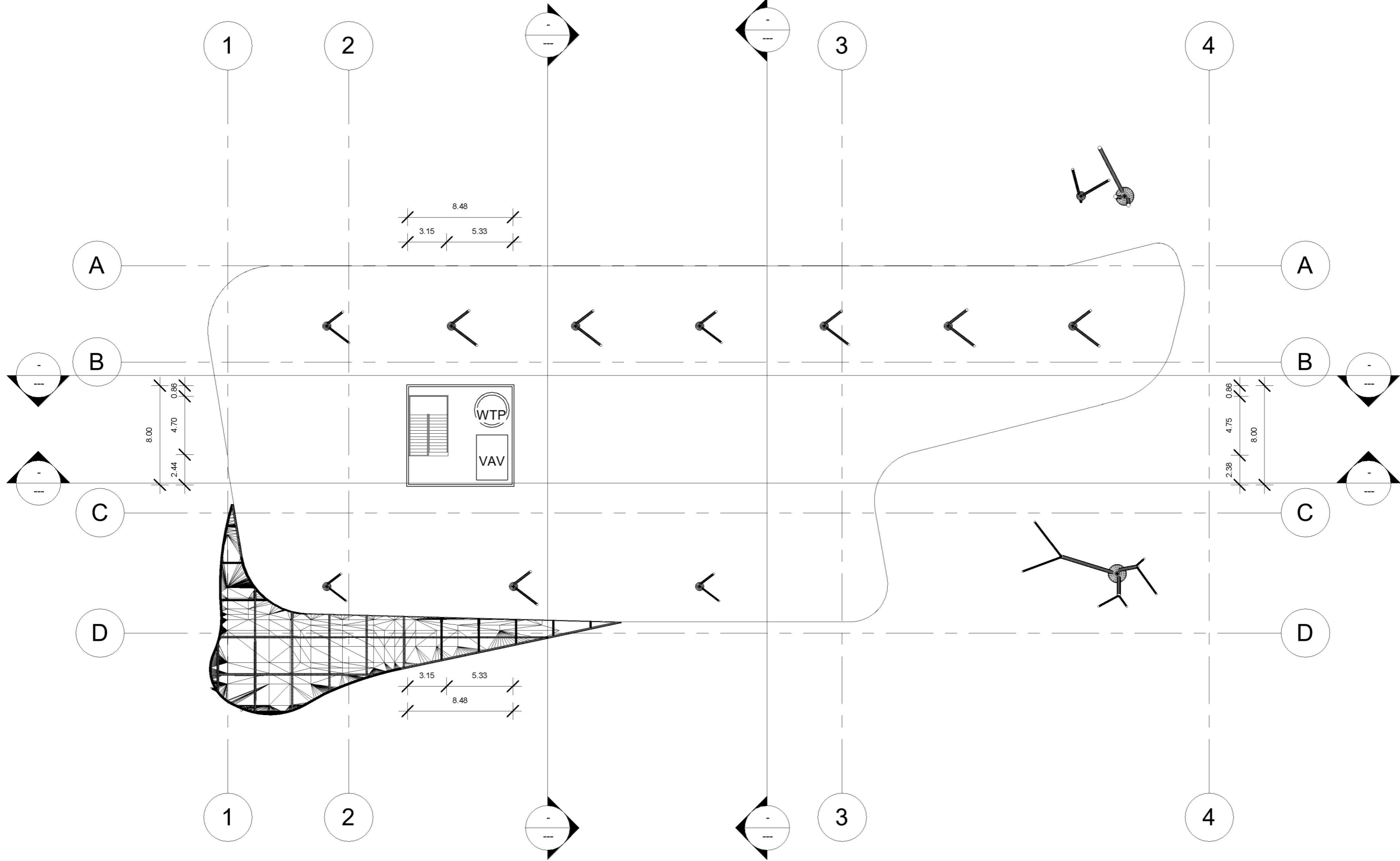
1 Floorplan Level 2
1 : 300



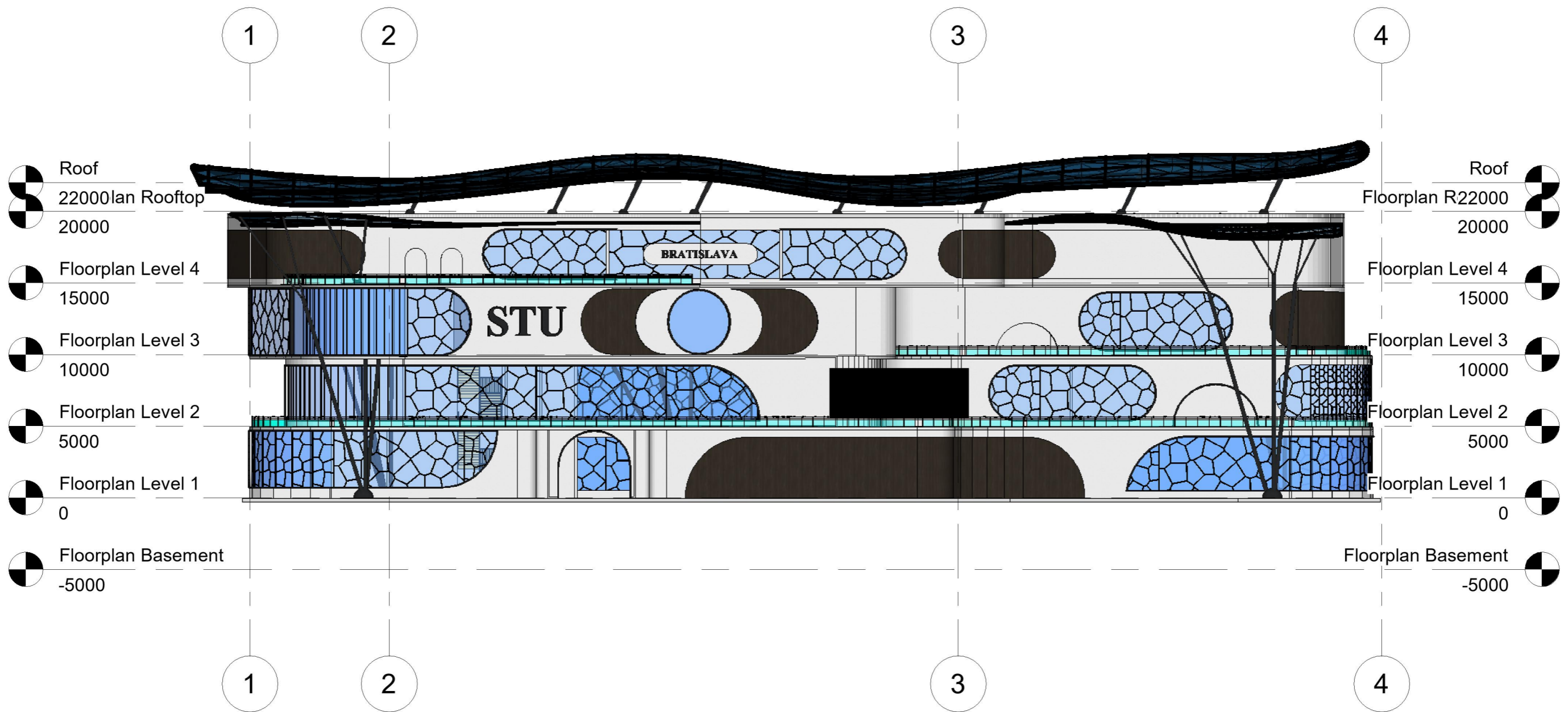
1 Floorplan Level 3
1 : 300



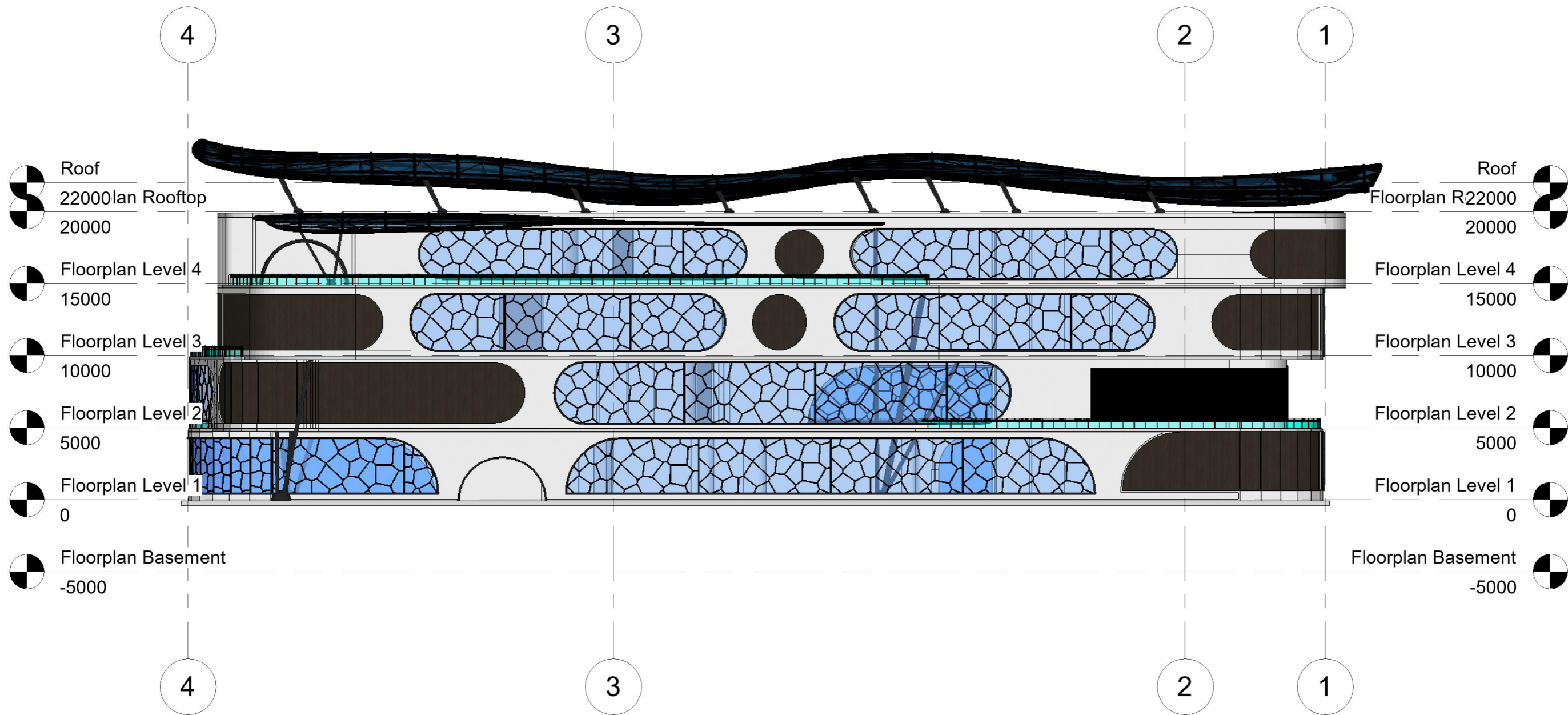
1 Floorplan Level 4
1 : 300



1 Floorplan Rooftop
1 : 300

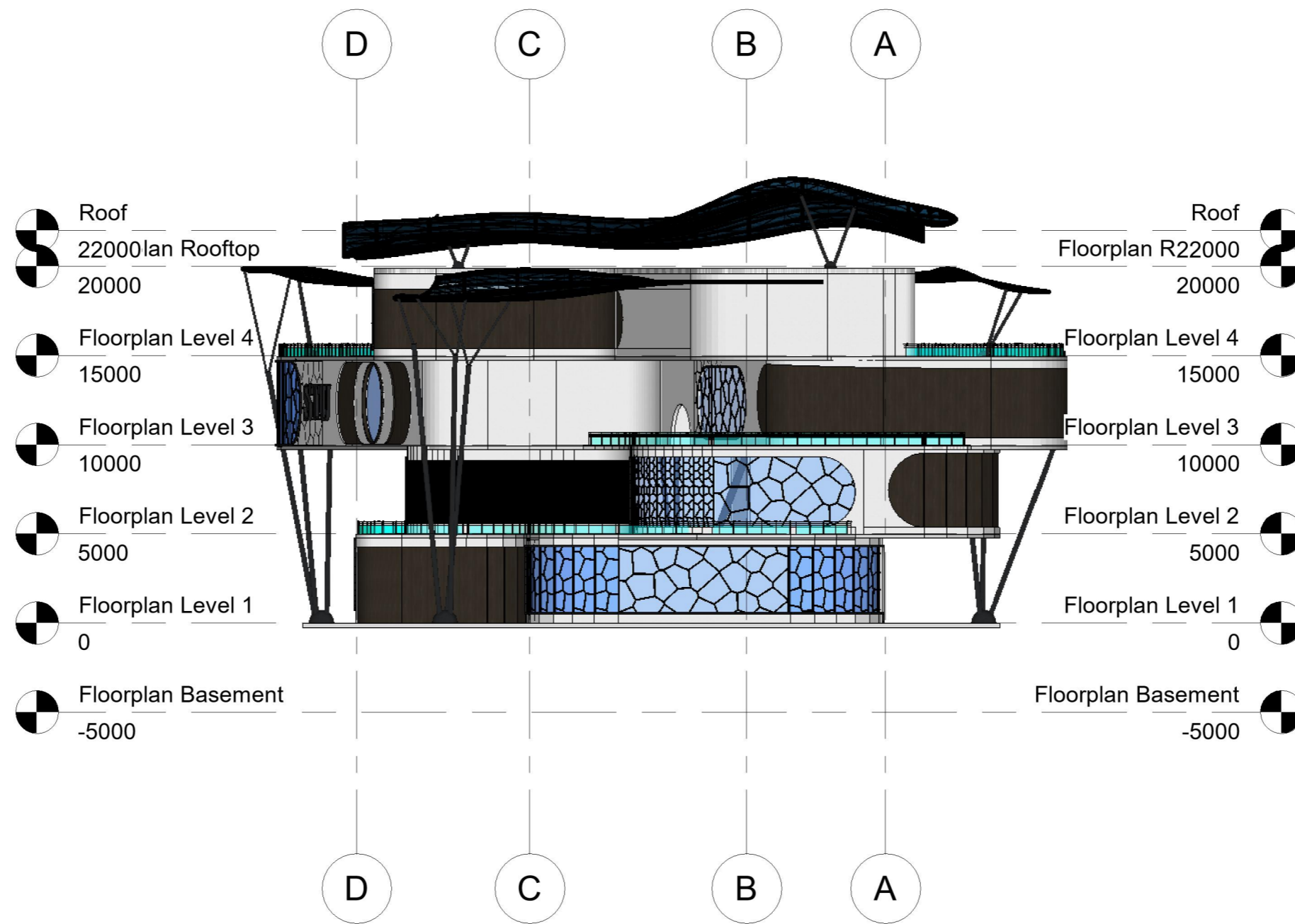


1 Front
1 : 300

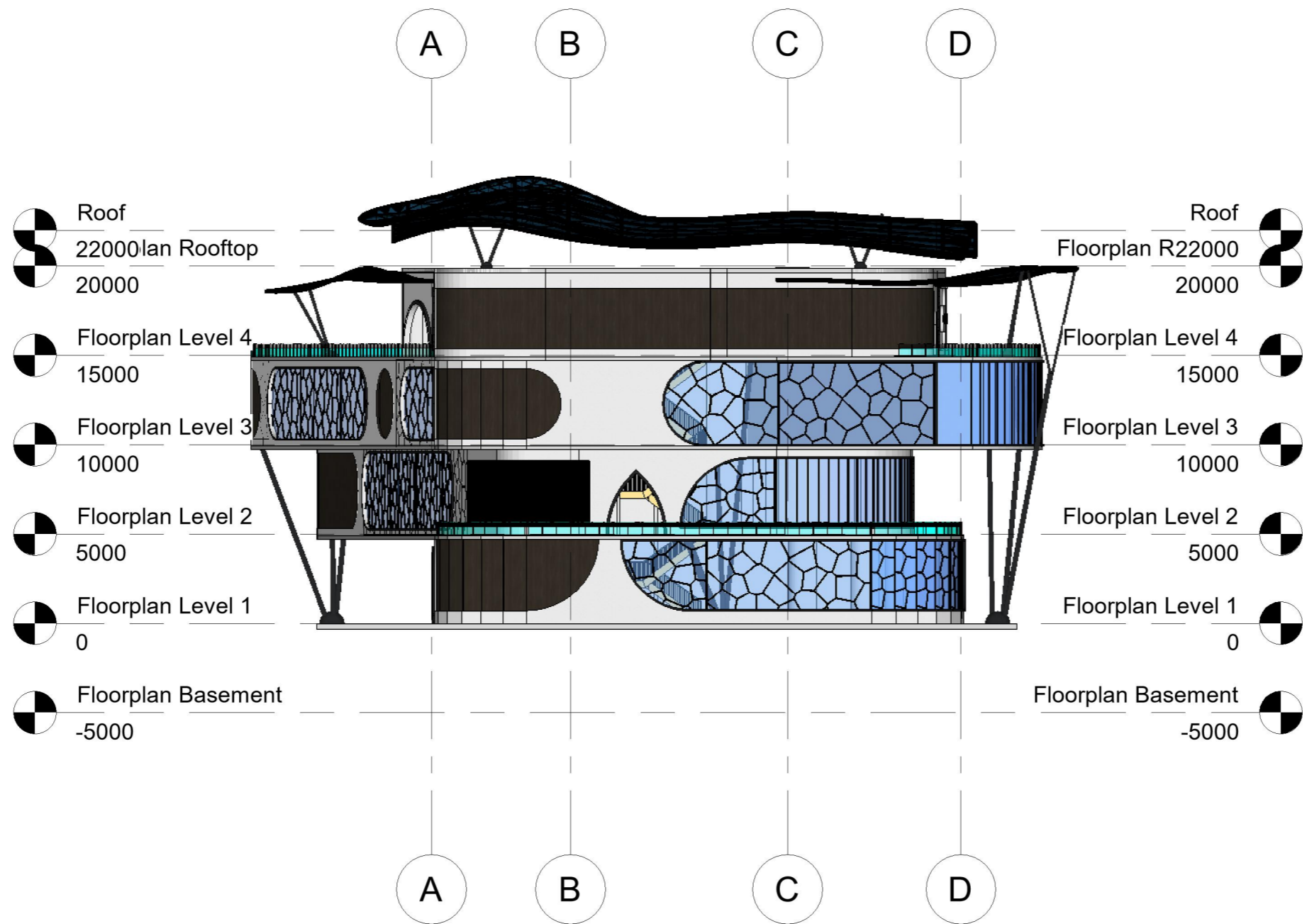


1 Back
1 : 300

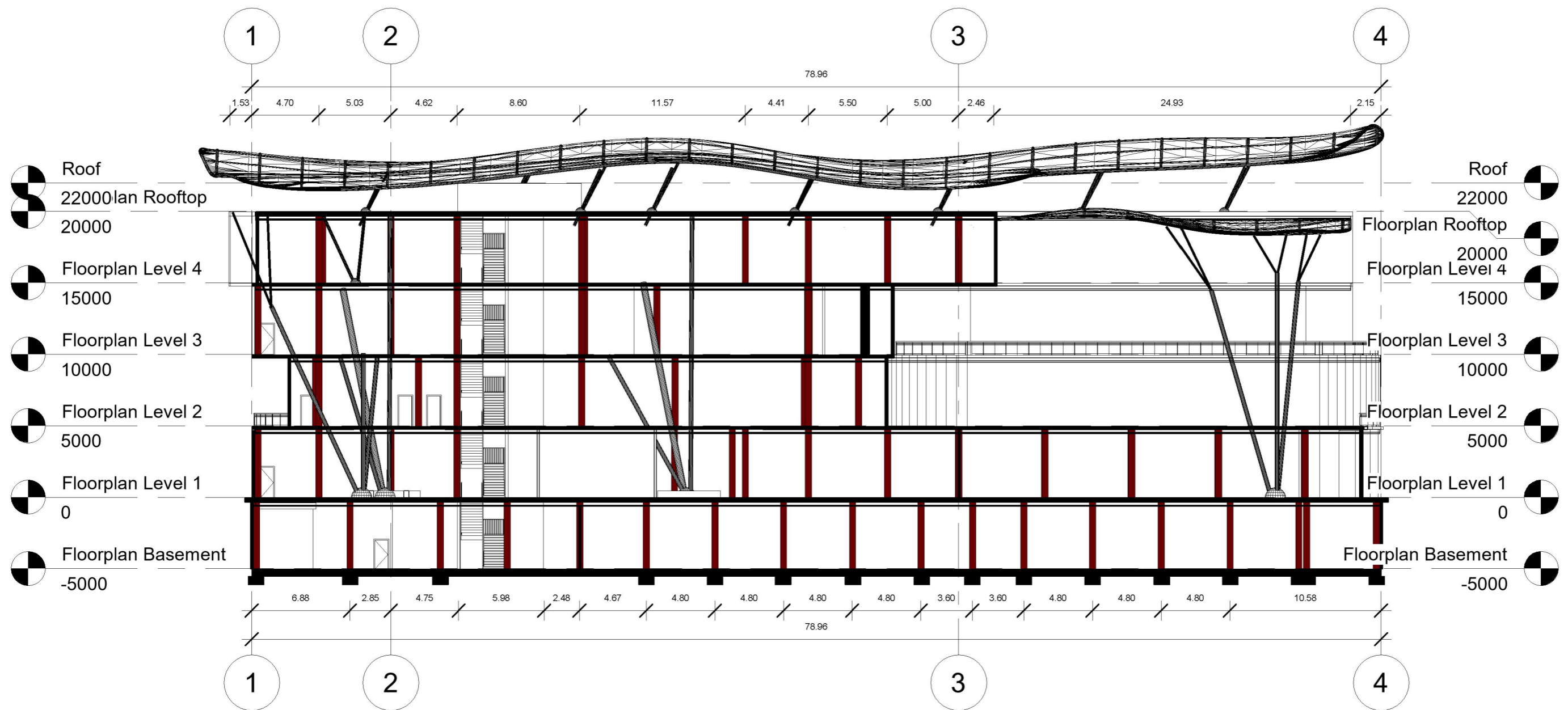
Elevation Back



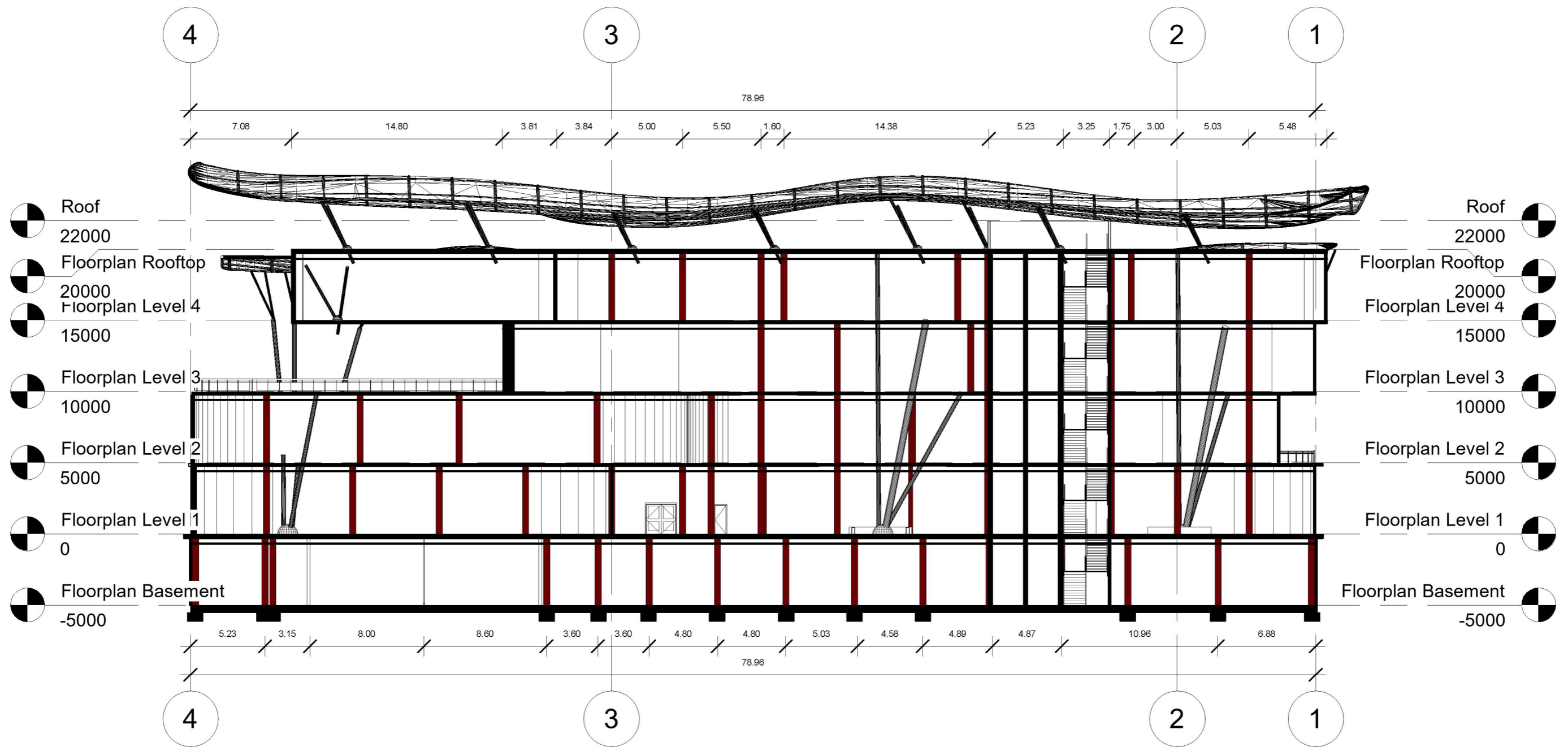
1 Side A
1 : 300



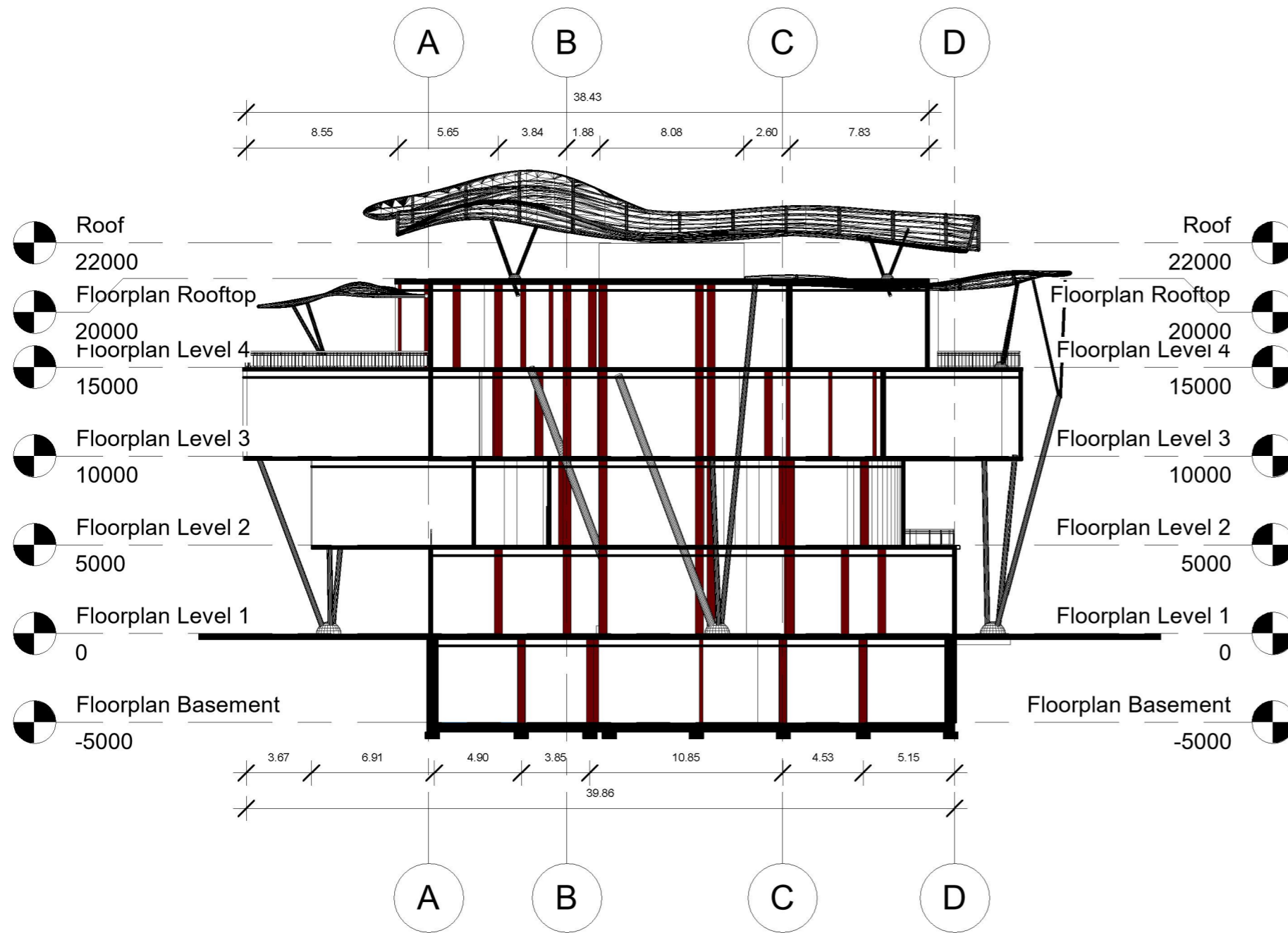
1 Side B
1 : 300



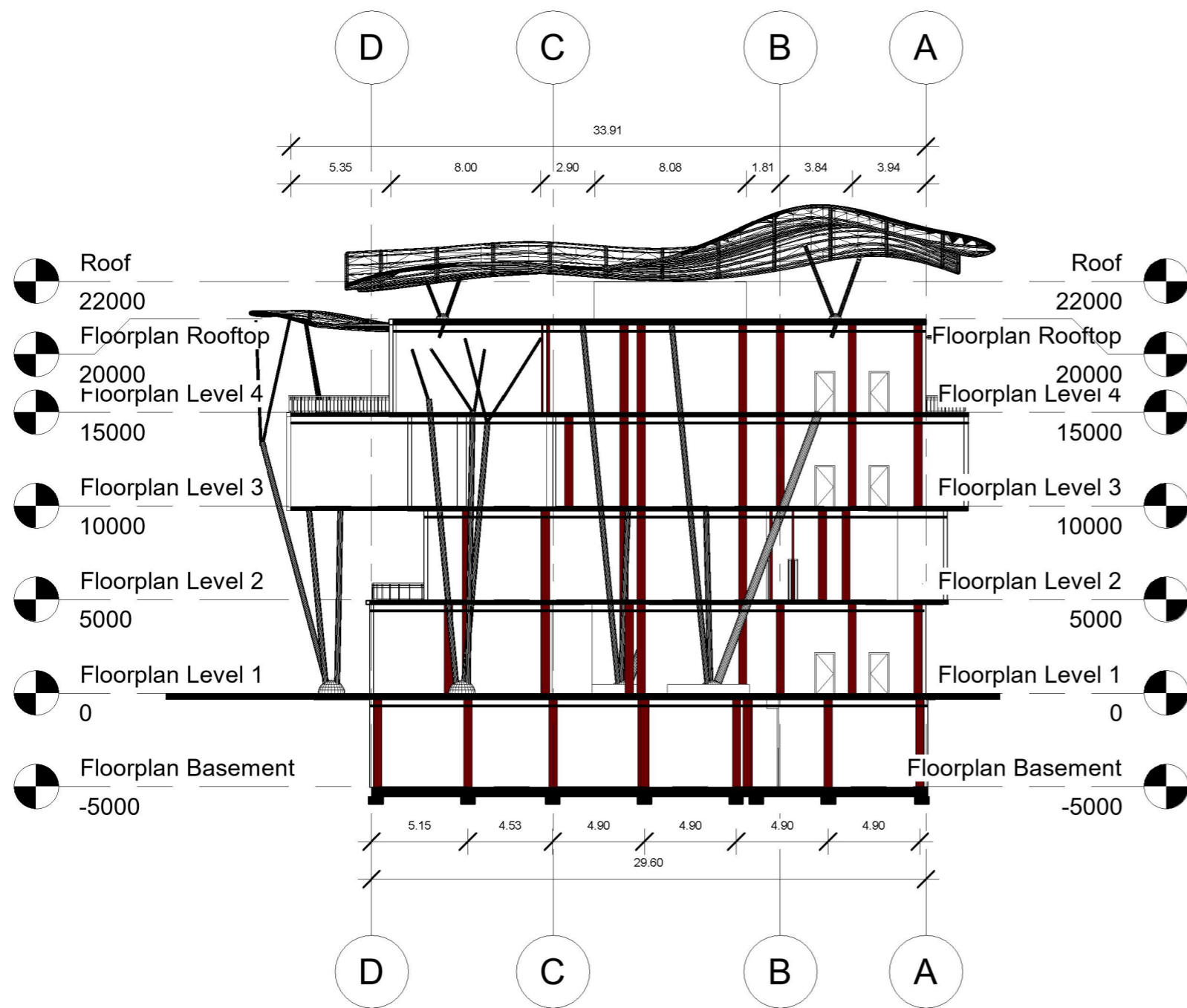
1 Section Front
1 : 300



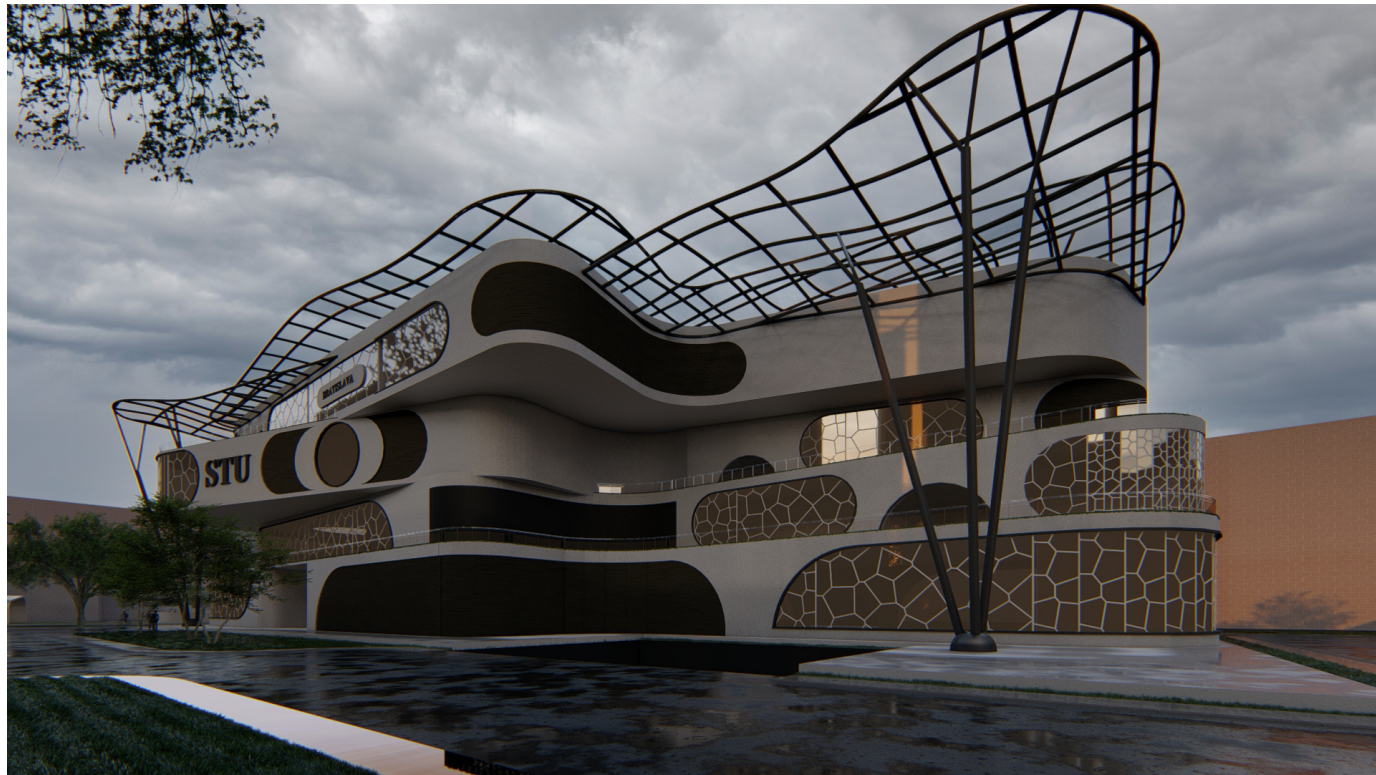
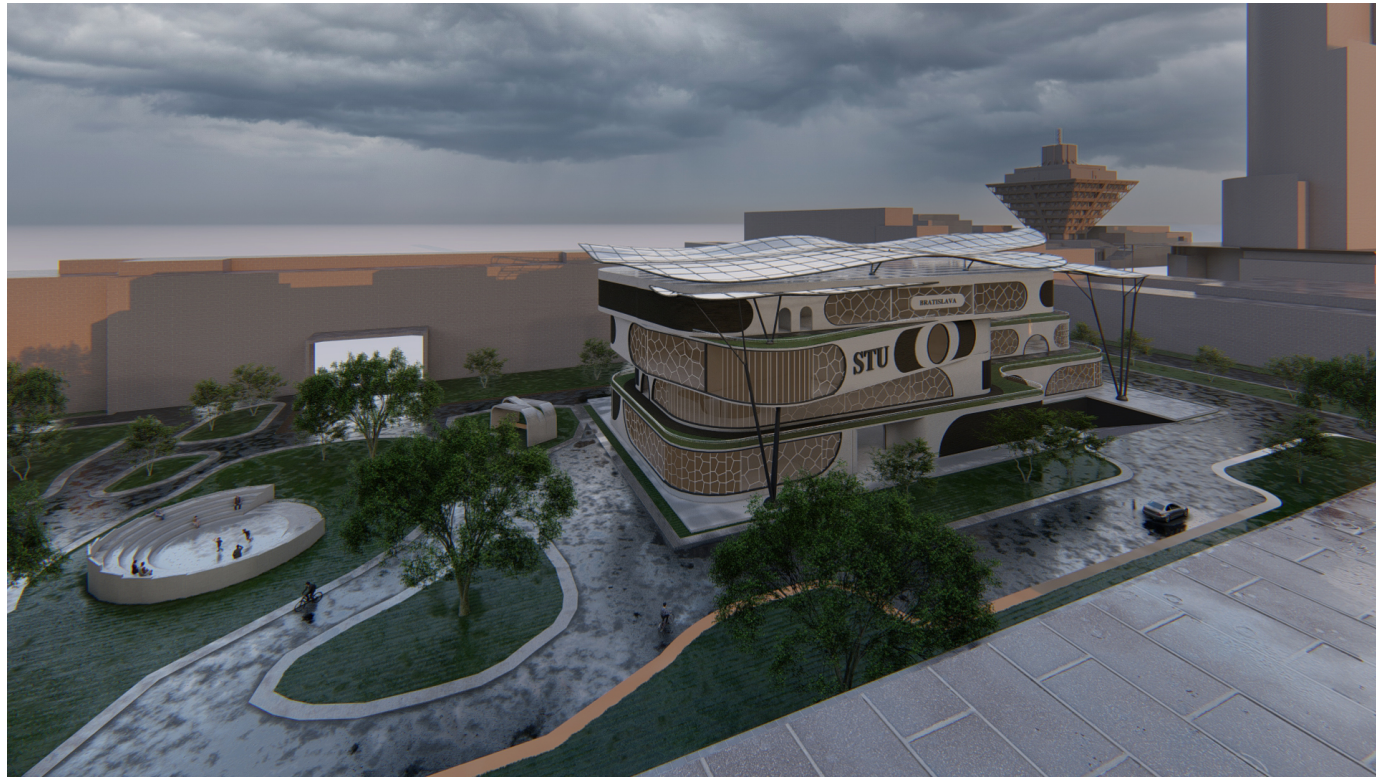
1 Section Back
1 : 300



1 Section Side B
1 : 300



2 Section Side A
1 : 300



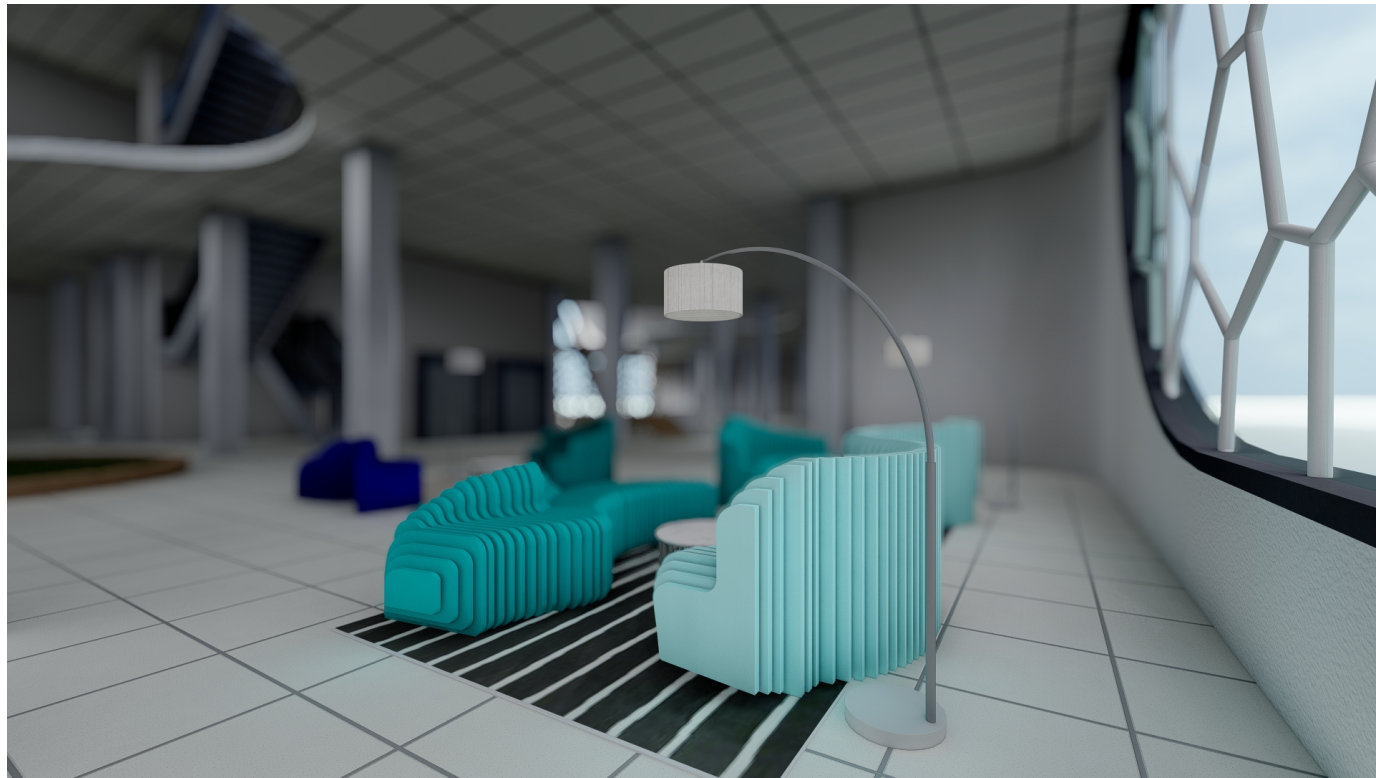
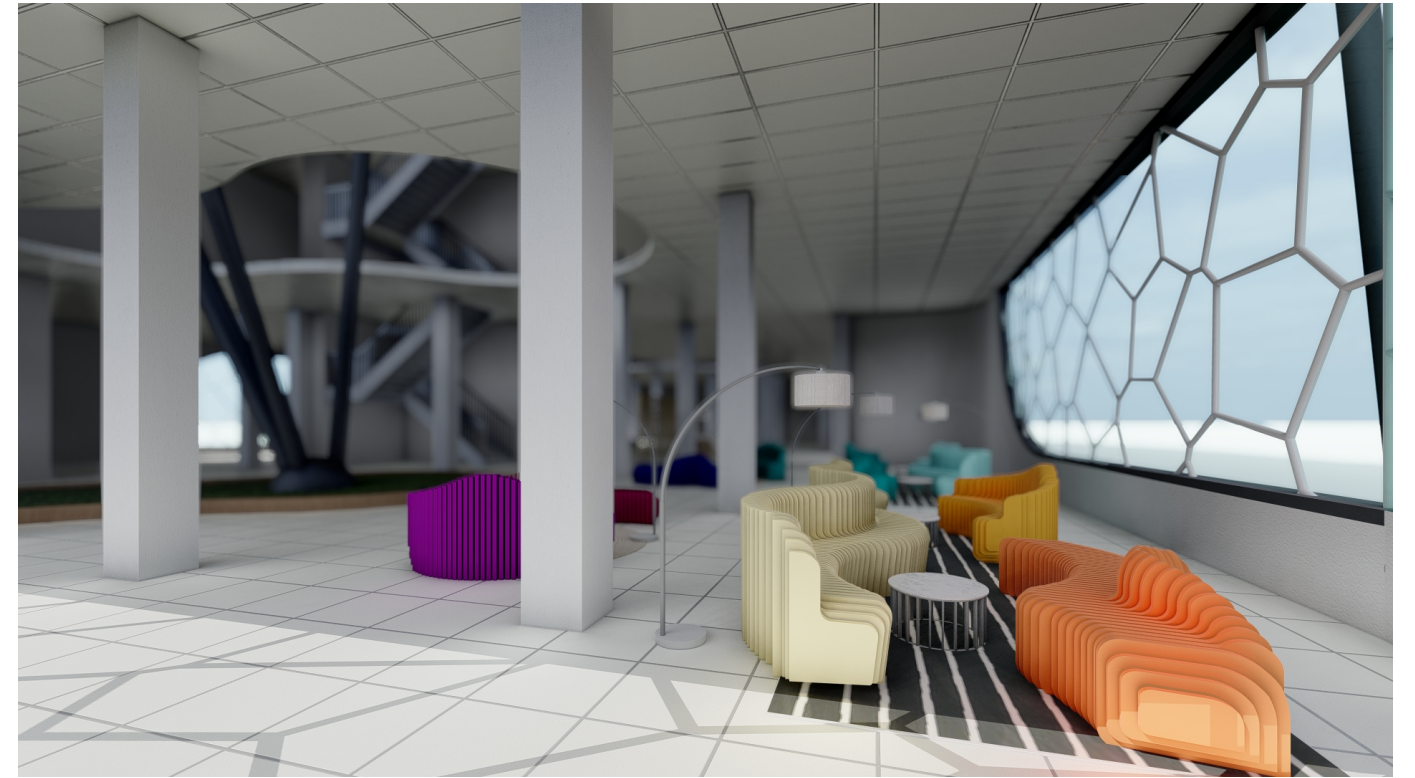
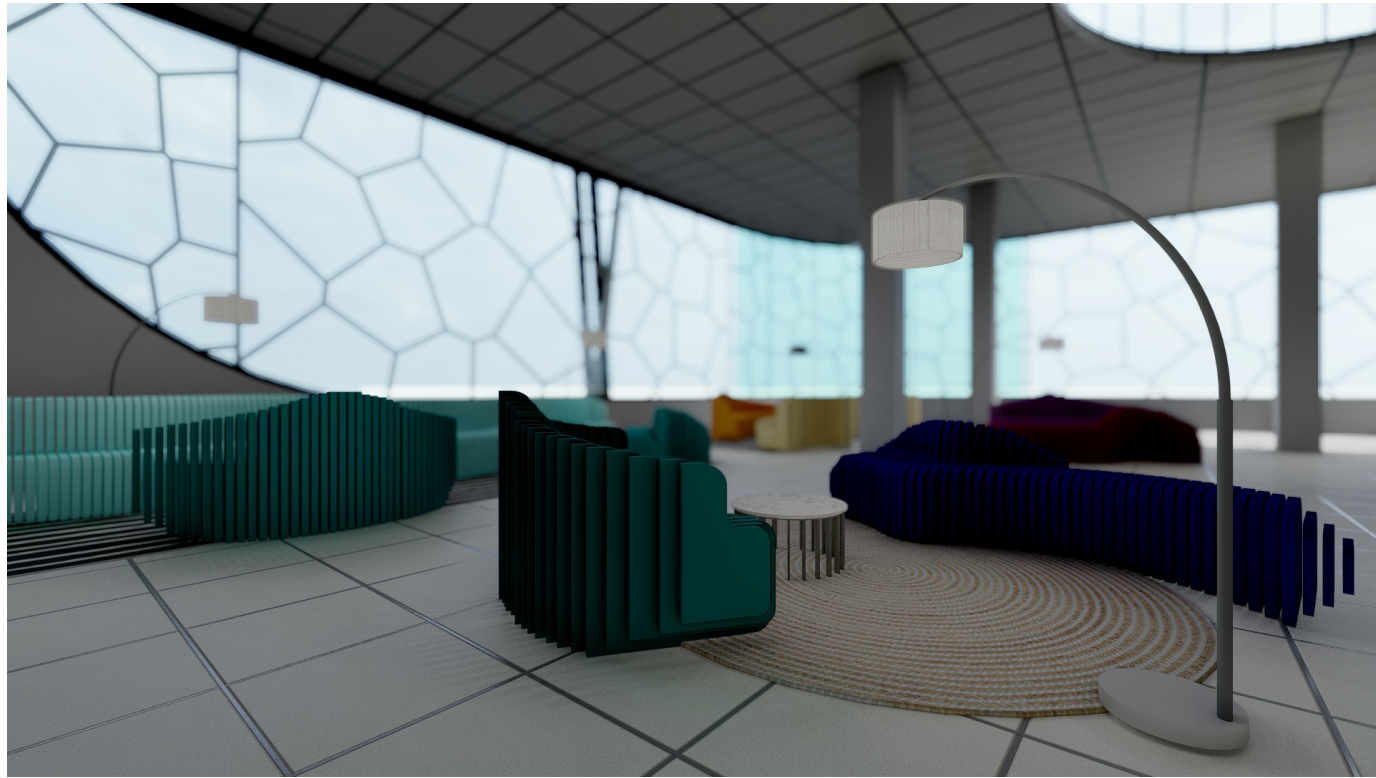
PERSPECTIVE | EXTERIOR



PERSPECTIVE | INTERIOR LIBRARY



PERSPECTIVE | INTERIOR CLASSROOM



PERSPECTIVE | INTERIOR LOUNGE



PERSPECTIVE | INTERIOR MEETING ROOM