



# TRA- VERSE

THROUGH COLORS

STU Center  
Bratislava  
Project

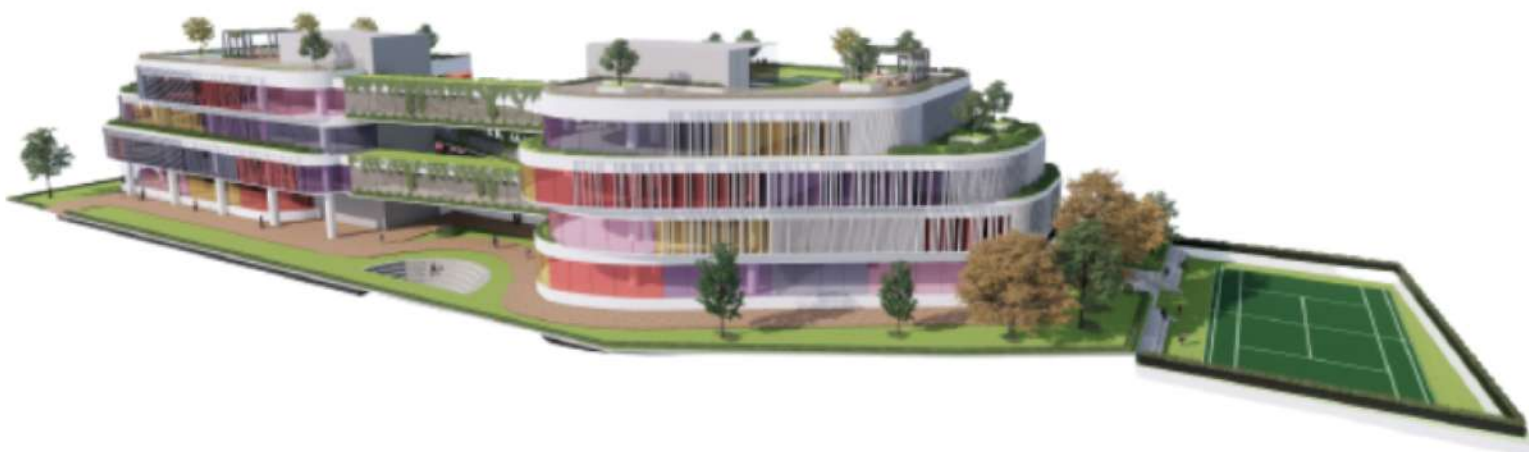


## Author & Co-Authors

Ariella Alandra Lomantojo

Yusuf Ariyanto S.T., M.Ars.

Ars. Marianne Tunggadewi Juluk Dwiputri ST. M.Ars.



## Problem

How to design a University Center that is open to professional and academic collaboration, also facilitate public presence, as an important urban space that is modern aside from how Slovakia is known as their traditionalism

## Theme

EDUCATIONAL COMMERCIAL SPACE WITH  
SUSTAINABLE APPROACH

## Macro Concept

ADAPTIVE CONTEMPORARY DESIGN WITH  
COLORFUL APPROACH

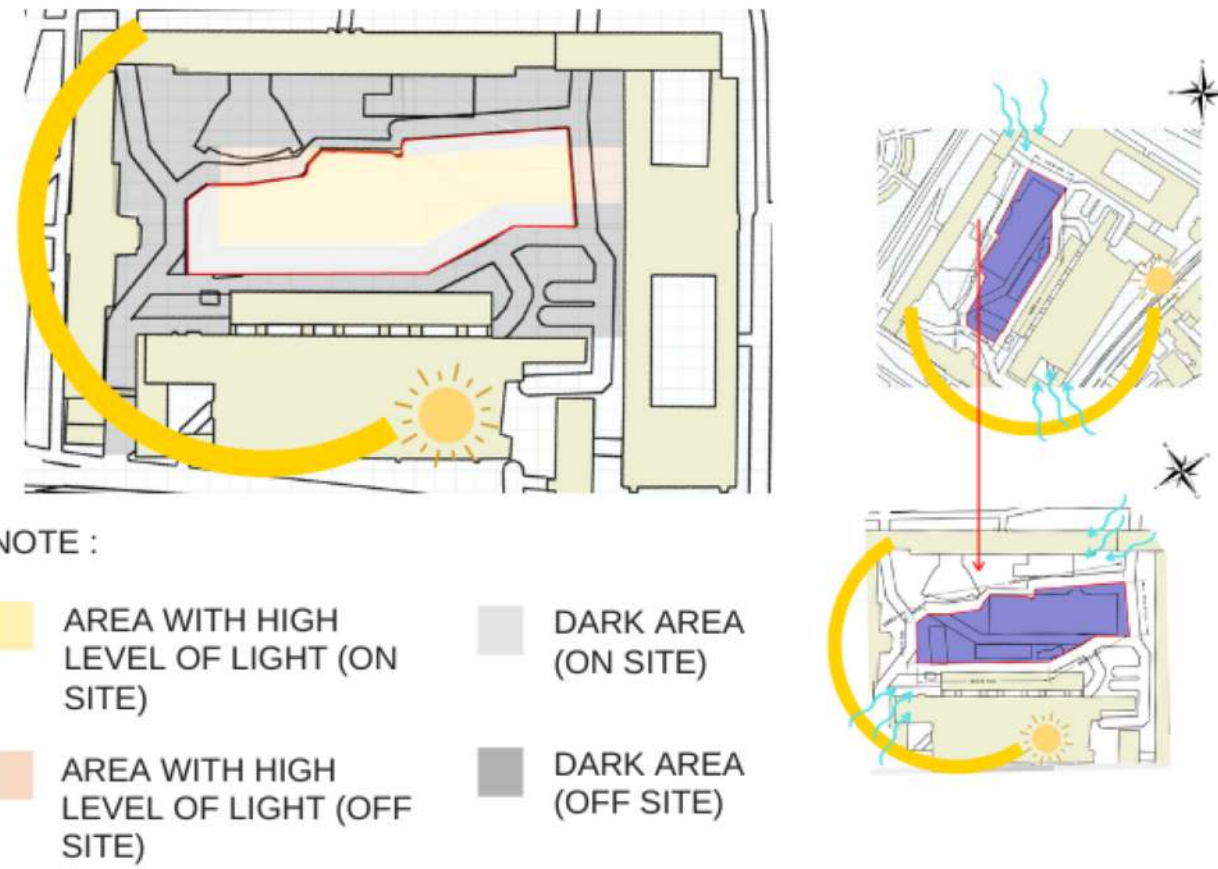
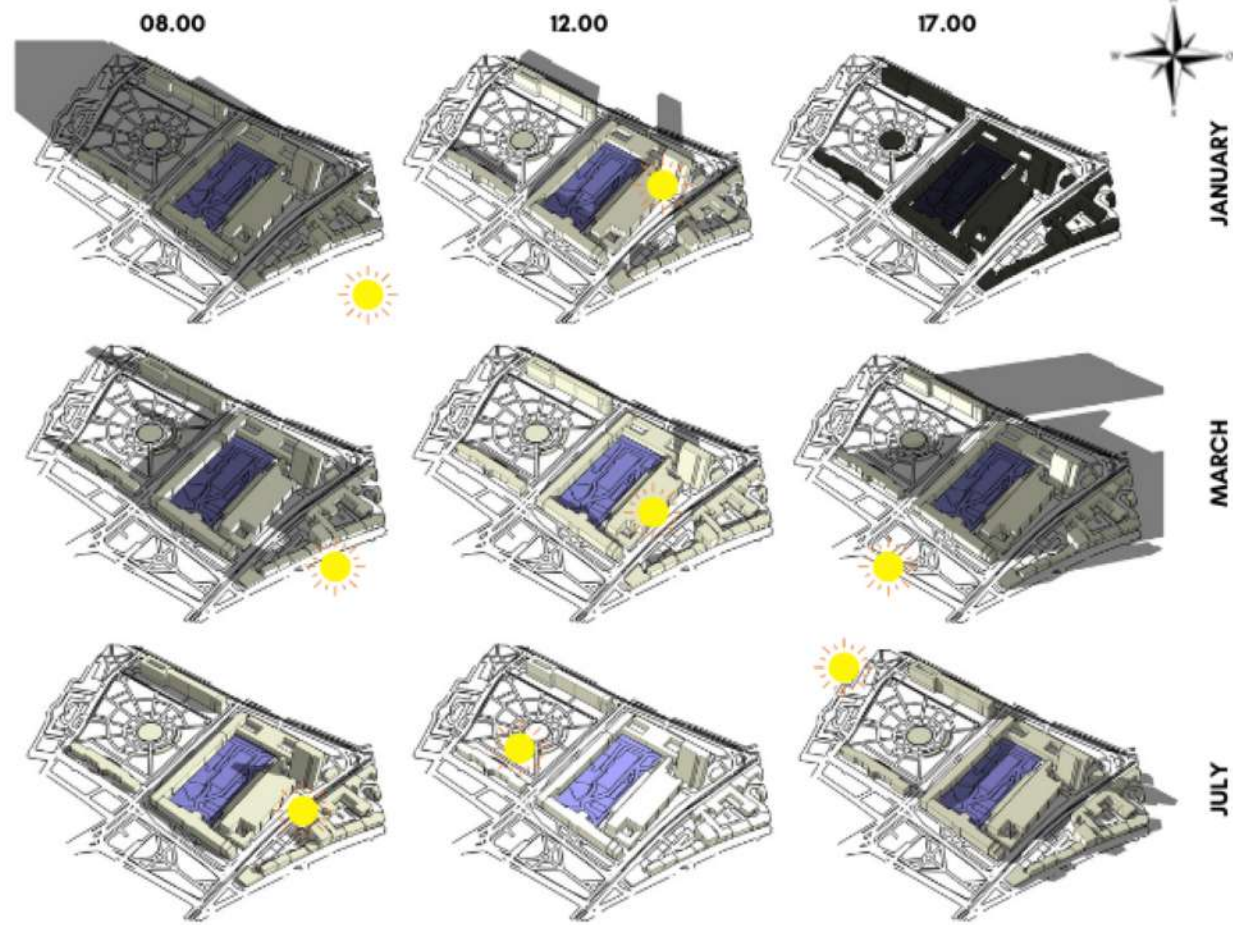
## Micro Concept

CONTEMPORARY WITH HUMAN BEHAVIOR



# SITE ANALYSIS

## LIGHT



## AIR QUALITY



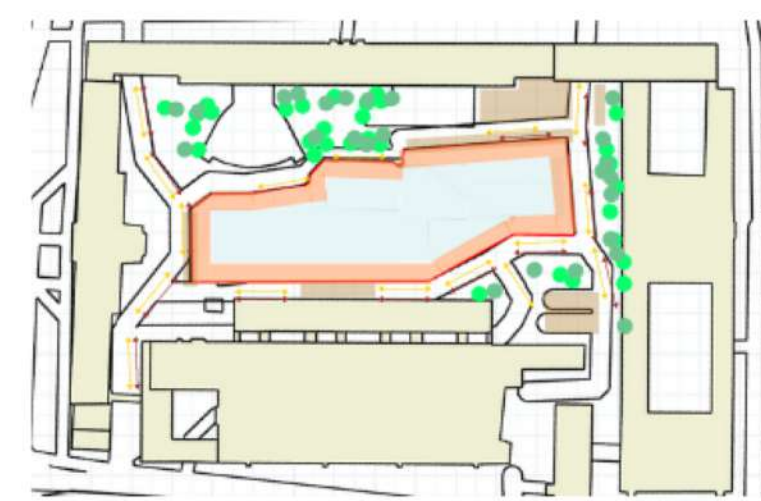
## HUMIDITY



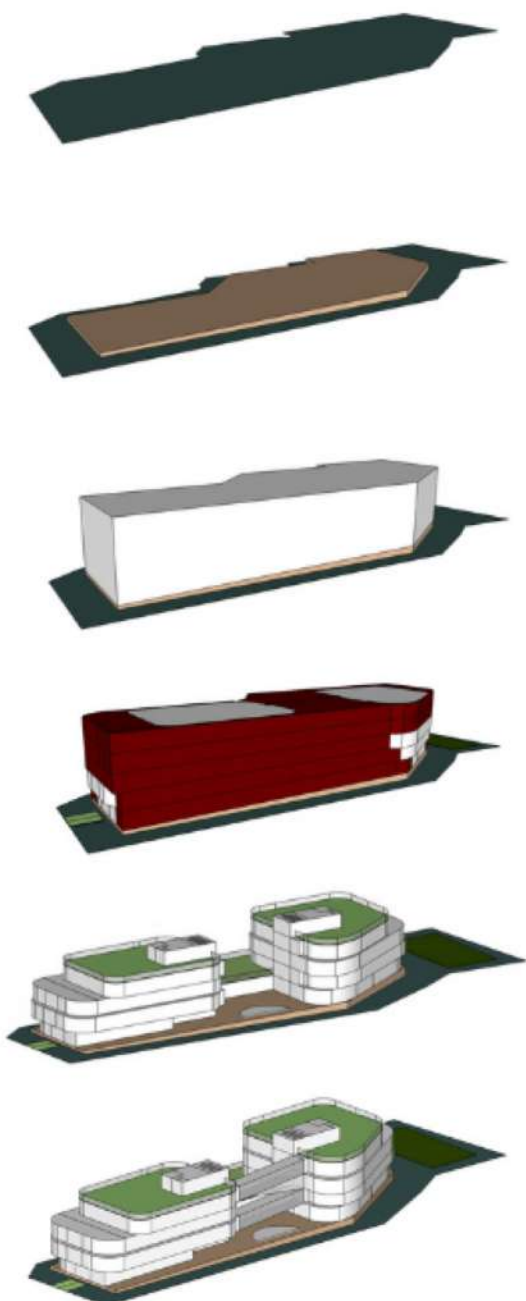
## NOISE



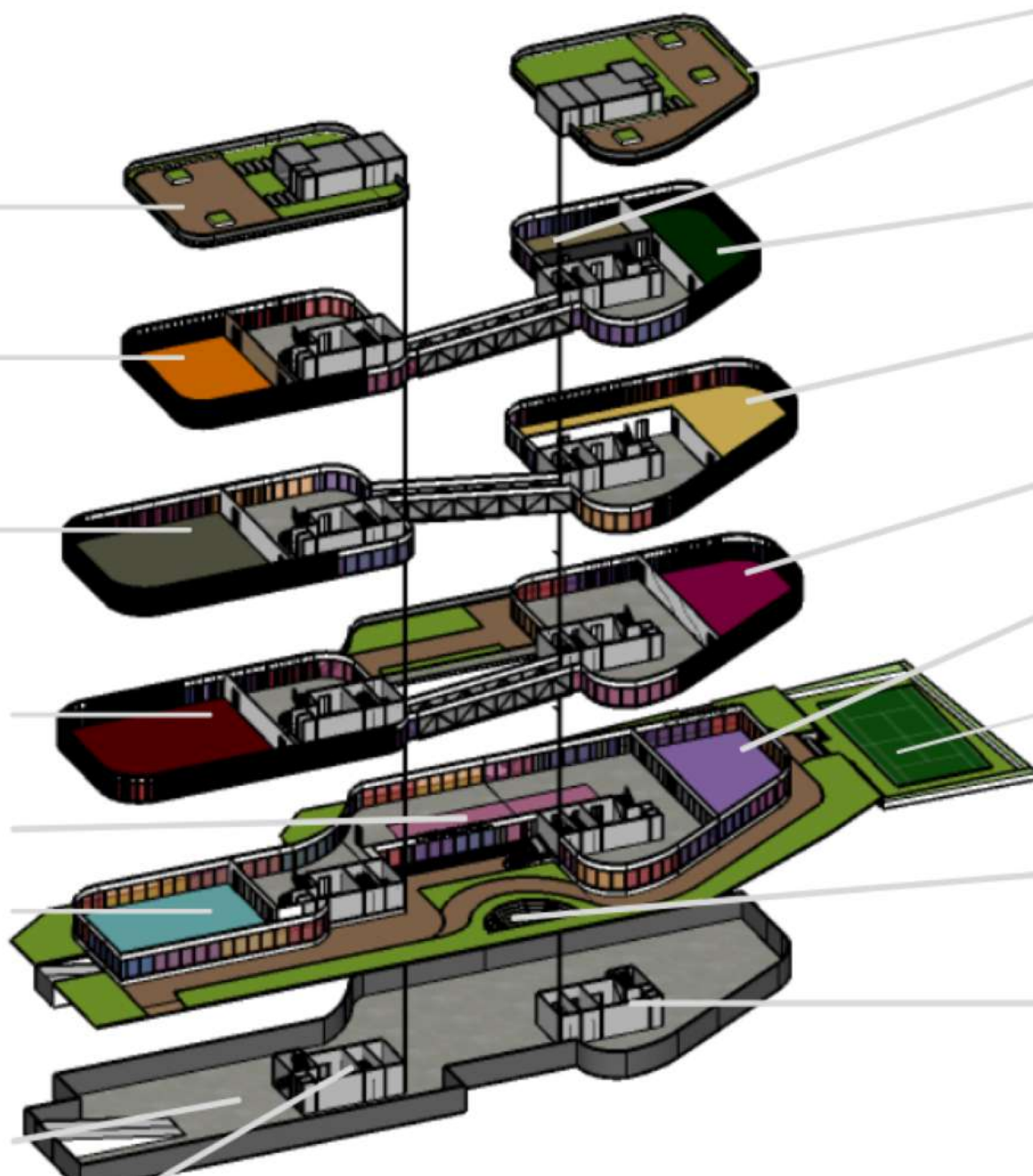
## PRIVACY



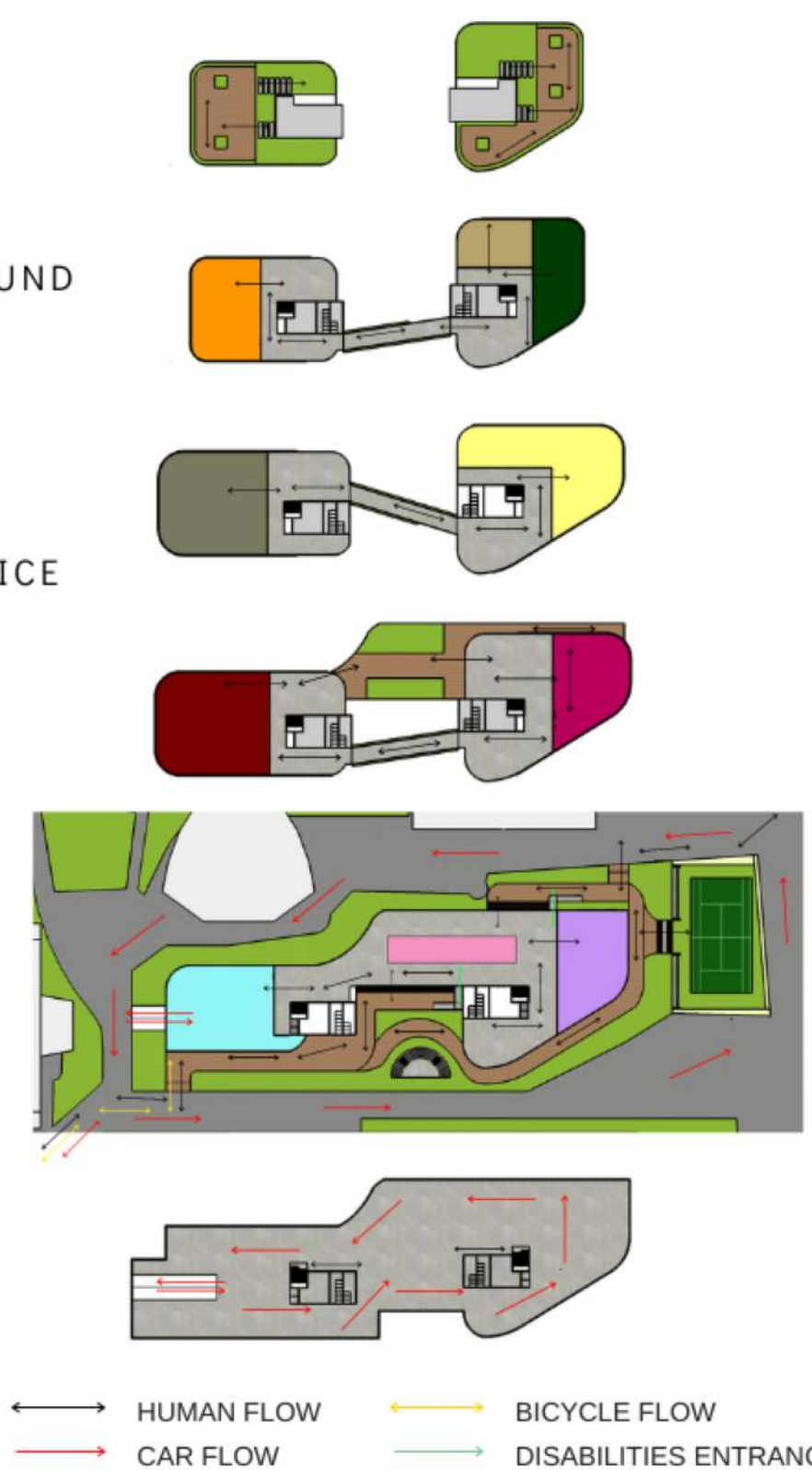
# SPACE & MASS, CIRCULATION



- ROOF GARDEN 759,53 m<sup>2</sup>
- LIBRARY/STUDY ROOM 418,47 m<sup>2</sup>
- PRESENTATION CENTER 646,33 m<sup>2</sup>
- RESEARCH CENTER 683,98 m<sup>2</sup>
- ENTRANCE/INFO 200 m<sup>2</sup>
- EXHIBITION/MULTIPURPOSE 572,33 m<sup>2</sup>
- UNDERGROUND PARKING 3200,28 m<sup>2</sup>
- CORE 128 m<sup>2</sup>



- ROOF GARDEN 839,77 m<sup>2</sup>
- WORKSHOP 214,7 m<sup>2</sup>
- TECHNICAL BACKGROUND 327,52 m<sup>2</sup>
- STARTUP CENTER 616,76 m<sup>2</sup>
- ADMINISTRATIVE OFFICE 425,54 m<sup>2</sup>
- CAFE/RESTAURANT 434,19 m<sup>2</sup>
- SPORT GROUND 420 m<sup>2</sup>
- AMPHITHEATRE 82,75 m<sup>2</sup>
- CORE 128 m<sup>2</sup>



# TRVERSE

## THROUGH COLORS

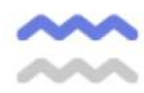
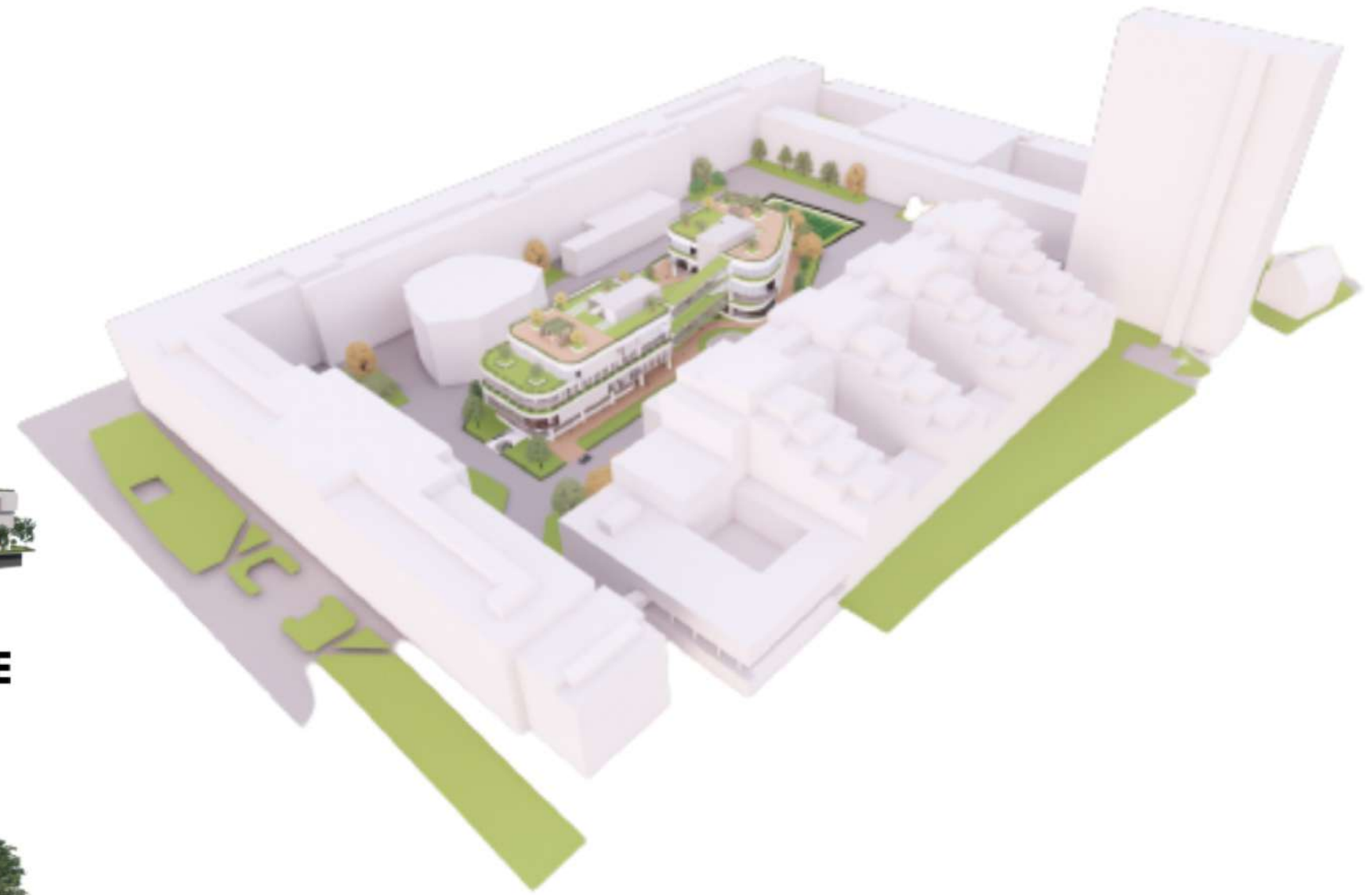
EDUCATIONAL COMMERCIAL SPACE WITH SUSTAINABLE AND ADAPTIVE COLORFUL-CONTEMPORARY APPROACH



FRONT PERSPECTIVE



BACK PERSPECTIVE



### It's Form ;

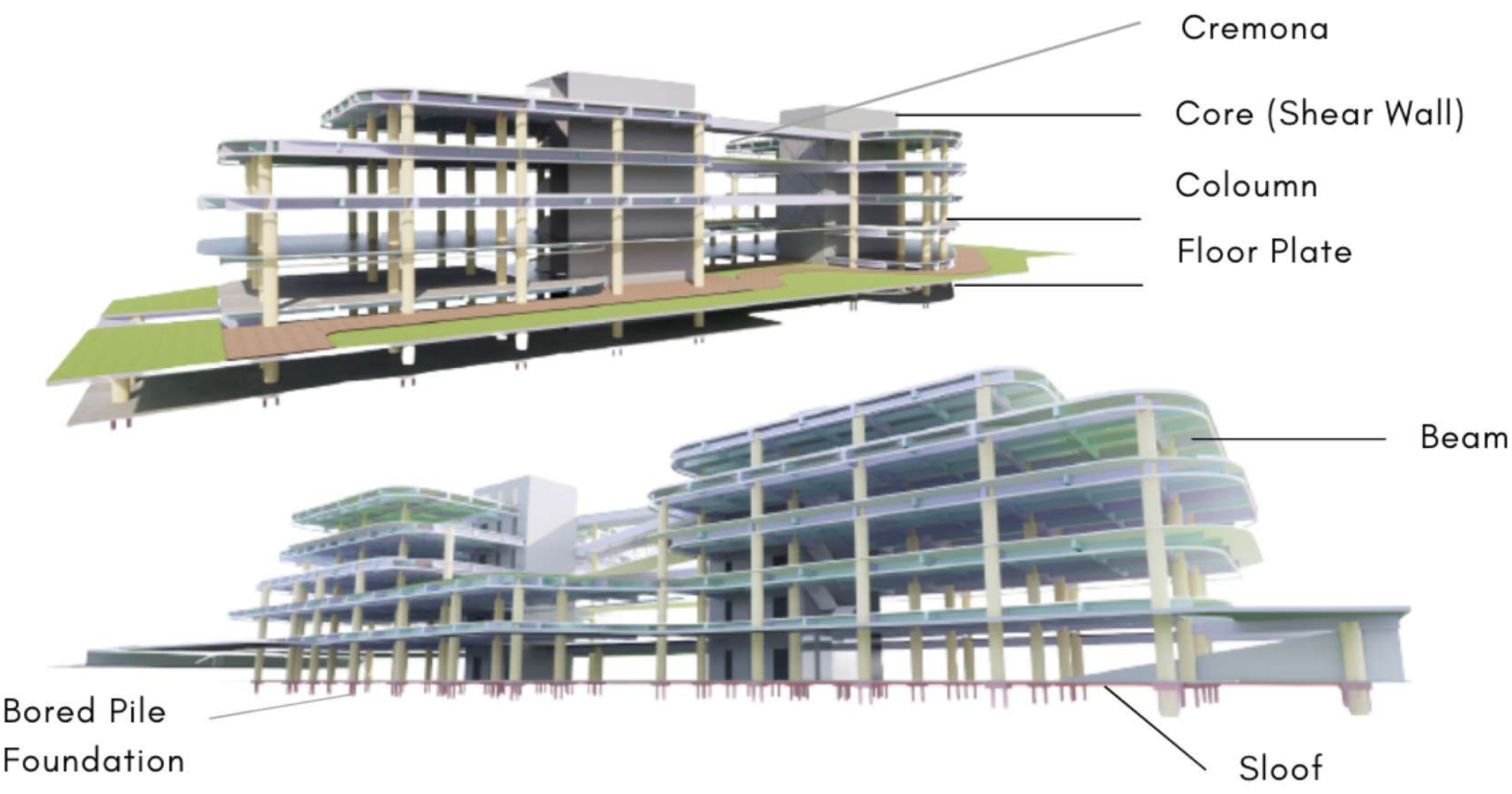
The use of curved lines with dynamic shapes, sizes, and pattern comes from adaptation of existing STU buildings which have rectangular shape and differences in building height and patterns. The bridge between two buildings completes the idea of iconic building inside the STU Faculties' area. (Adaptive, Contemporary, Representative & Iconic).



### It's Colors ;

Comes from adaptation of STU's logo color which is Magenta, then graded into several similar colors through glazed low e glass. (Colorful & Iconic). The bridge between two buildings uses low e glass that represents intellect, knowledge, & wisdom. This bridge and its' color represents collaboration between STU and public. (Commercial Space, Representative & Iconic)





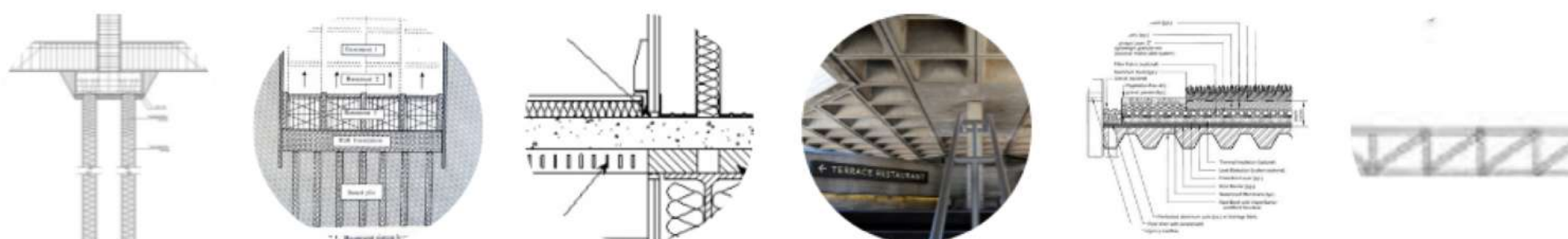
### It's Materials ;

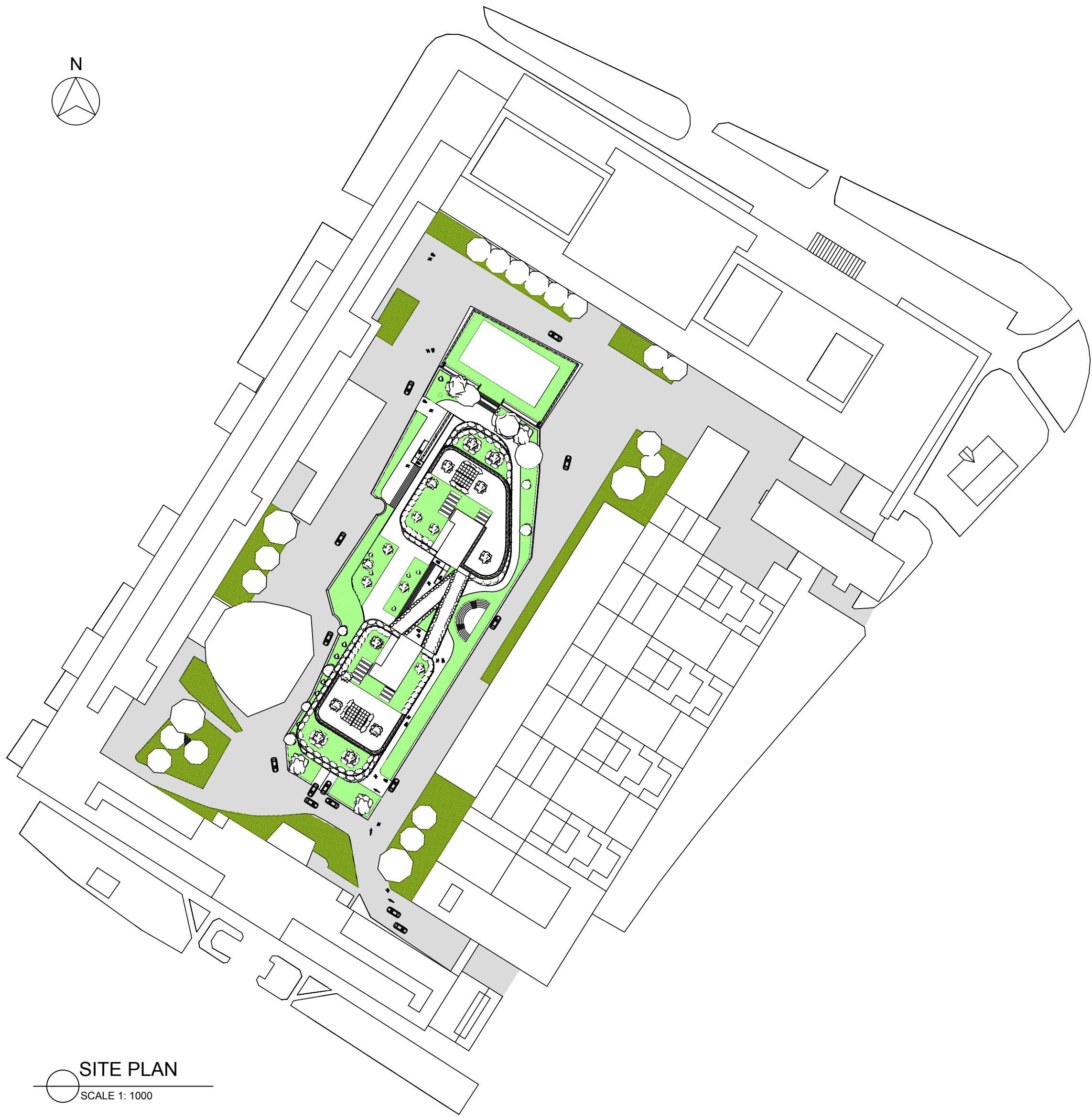
Uses Recycled Hard-Wood Boards as a secondary skin to cover some private rooms, Glazed Low-E Glass that surrounds the building, Concrete, & Hebel Brick to support it's Sustainability. (Contemporer & Sustainable).



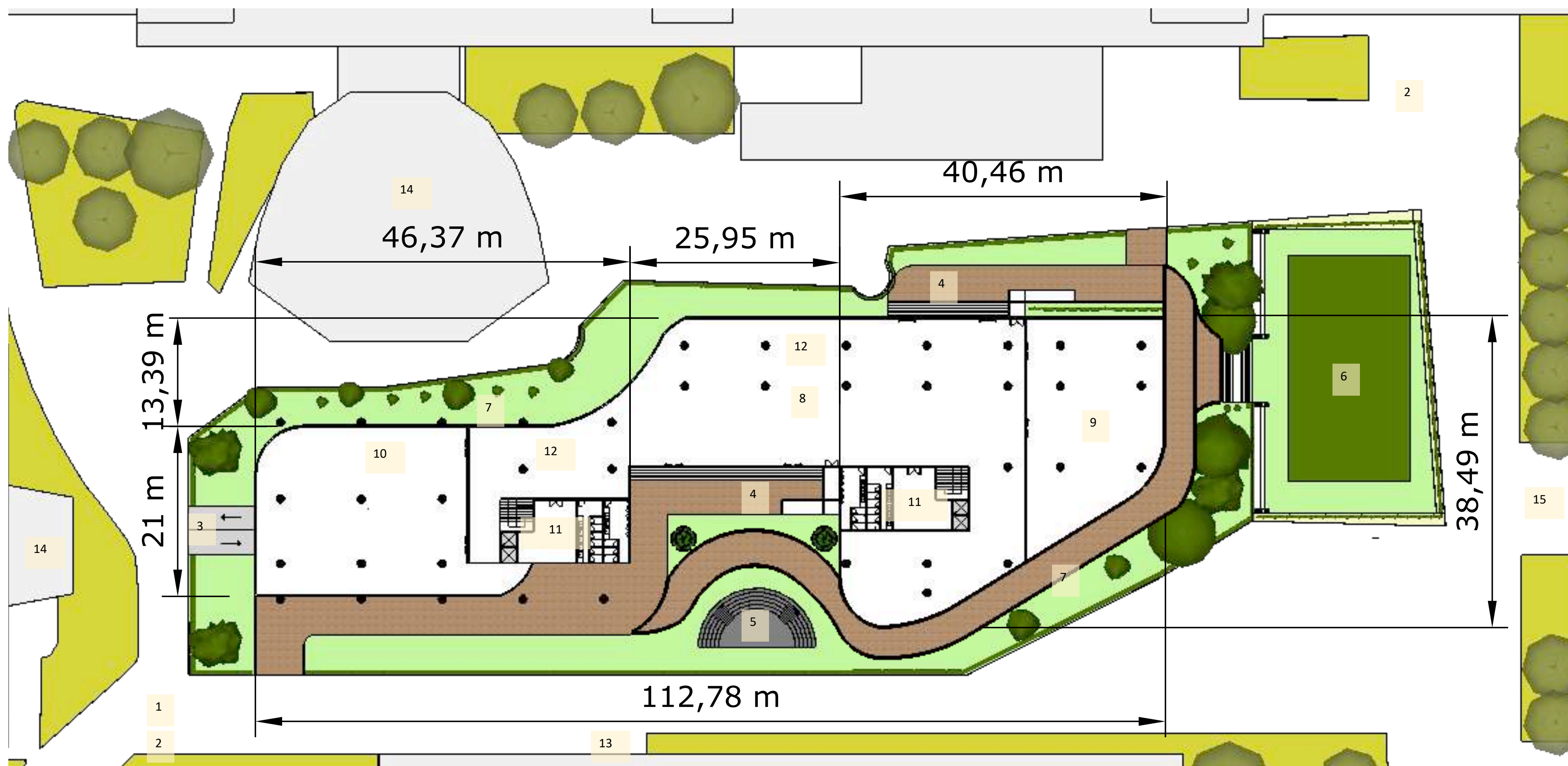
### It's Construction ;


Uses Bored Pile foundation, Sloof, Concrete Retaining Walls, Coloumn, Beam, Concrete Floor Plate, Waffle Slab, Flat Roof, Green Roof, Cremona





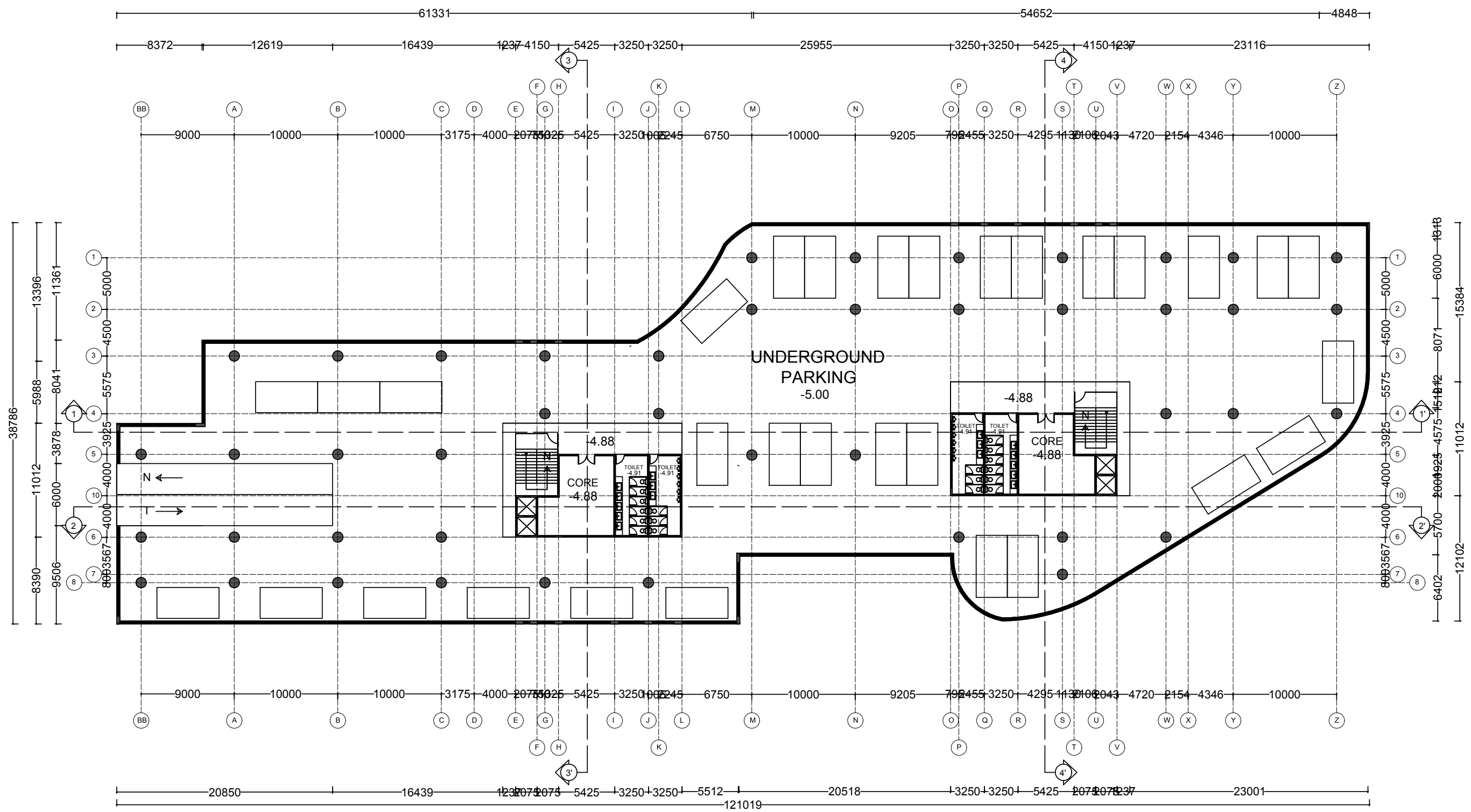
SITE PLAN  
SCALE 1: 1000

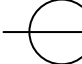


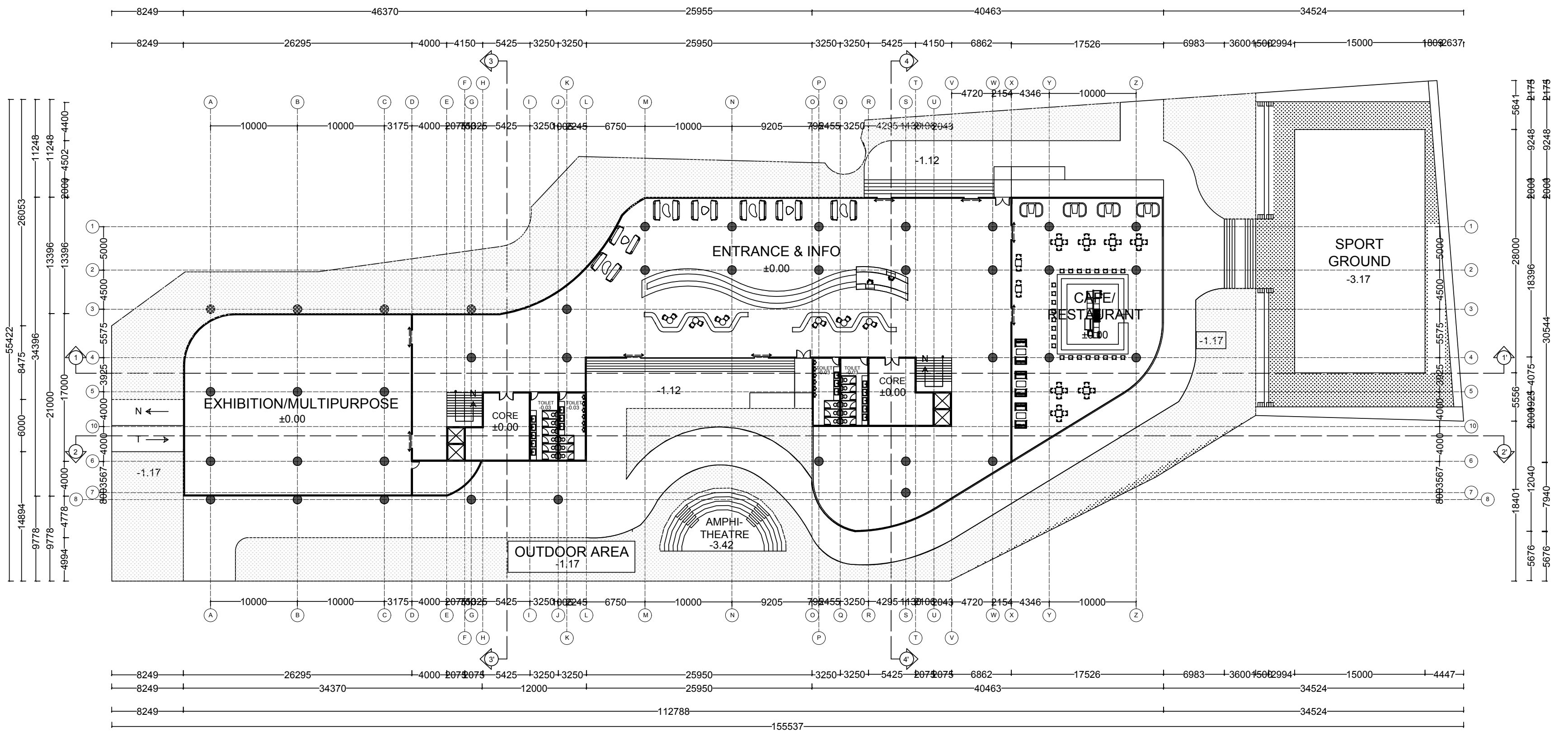
 LAYOUT PLAN  
 SCALE 1 : 350

LEGEND

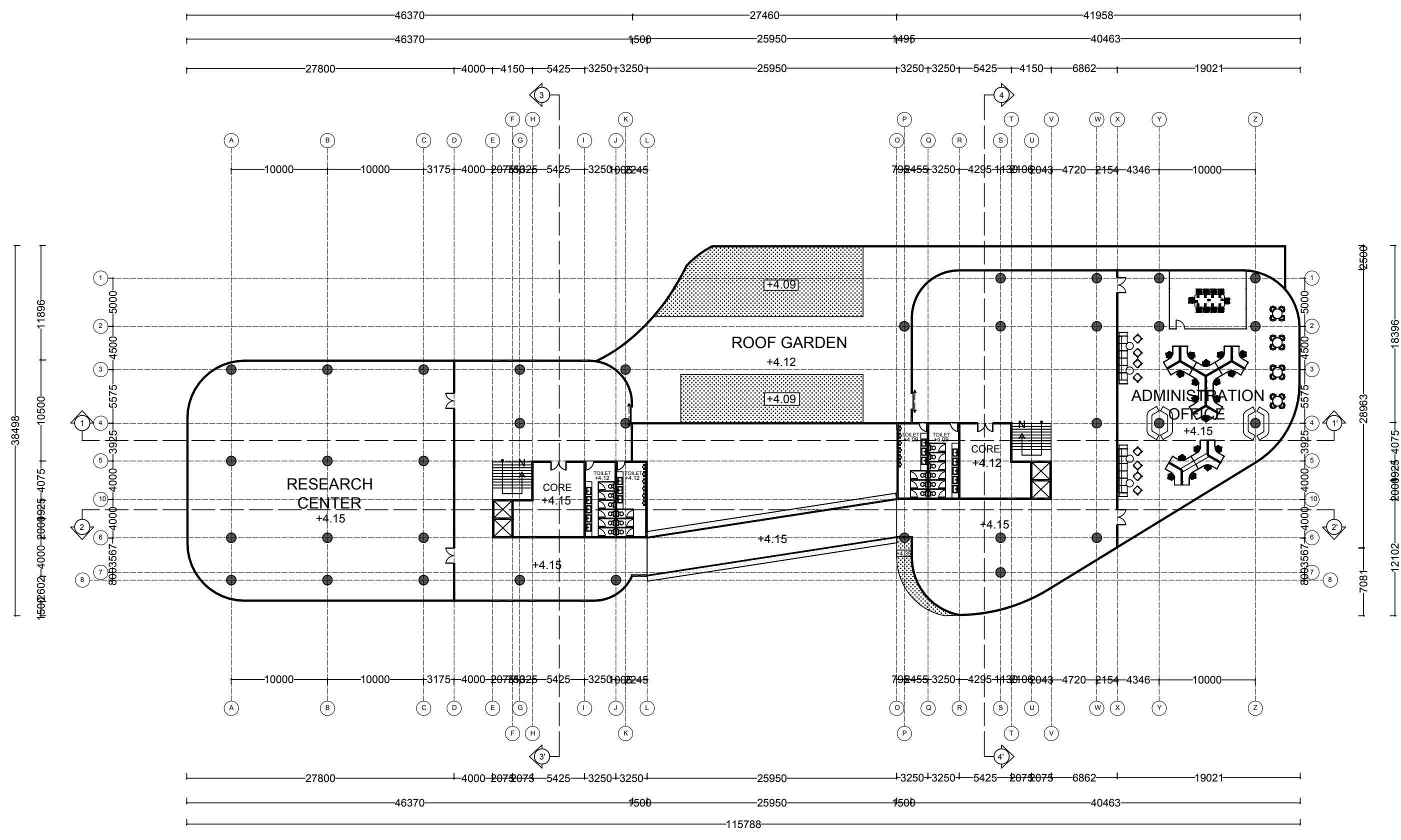
- |   |  |
|---|--|
| 1 : Car Entrance to Site                | 11 : Core (Toilet, Lift, Stairs, Janitor)    |
| 2 : Human Entrance to Site              | 12 : Formal/Informal, Gathering Area         |
| 3 : Car Entrance to Underground Parking | 13 : Faculty of Chemical and Food Technology |
| 4 : Human Entrance to STU Center        | 14 : Faculty of Mechanical Engineering       |
| 5 : Amphitheatre, Outdoor Area          | 15 : Faculty of Civil Engineering            |
| 6 : Sport Ground, Outdoor Area          |  |
| 7 : Garden, Outdoor Area                |  |
| 8 : Entrance & Info                     |  |
| 9 : Café/Restaurant                     |  |
| 10 : Exhibition/Multipurpose            |  |



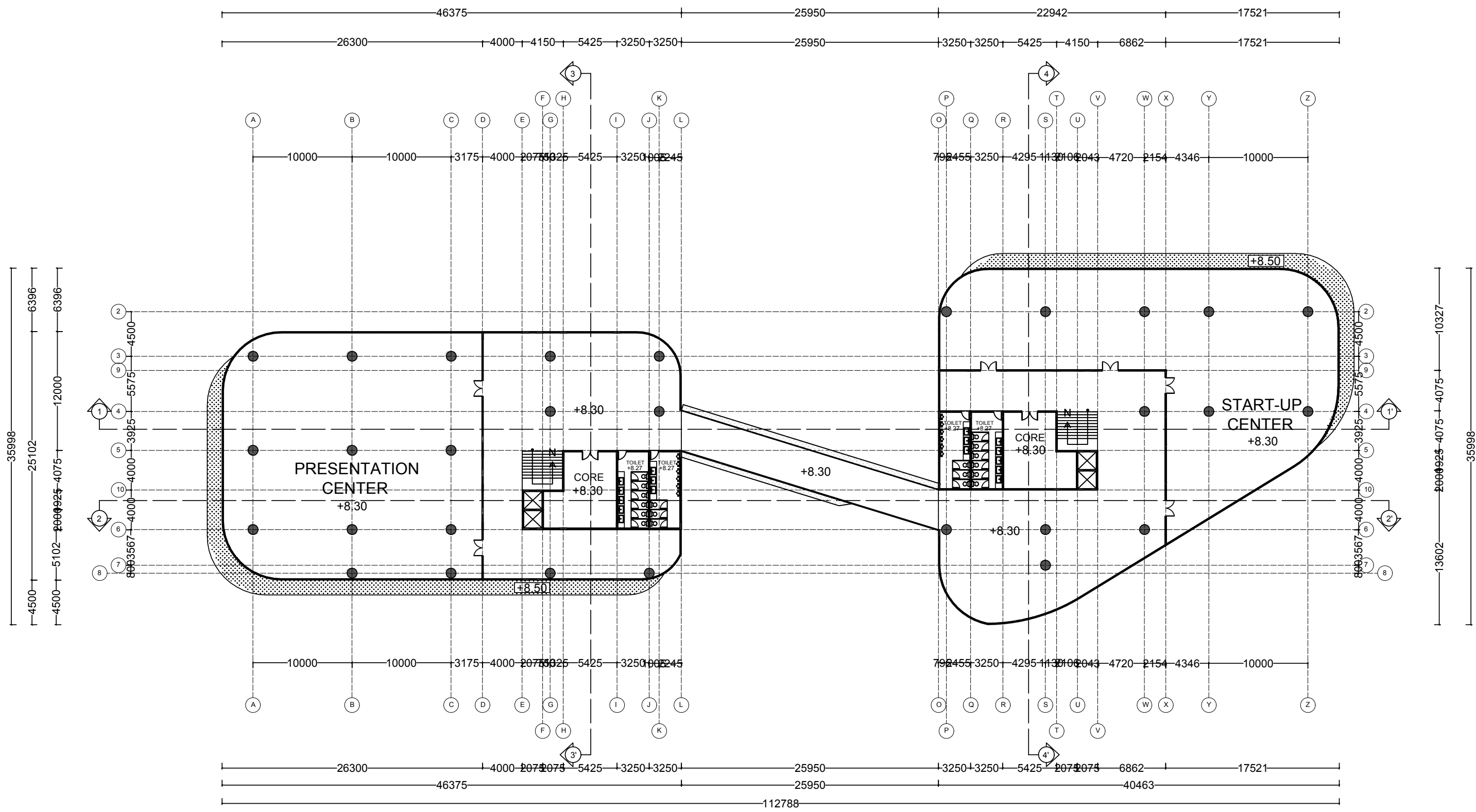

**BASEMENT FLOORPLAN**  
 SCALE 1: 350



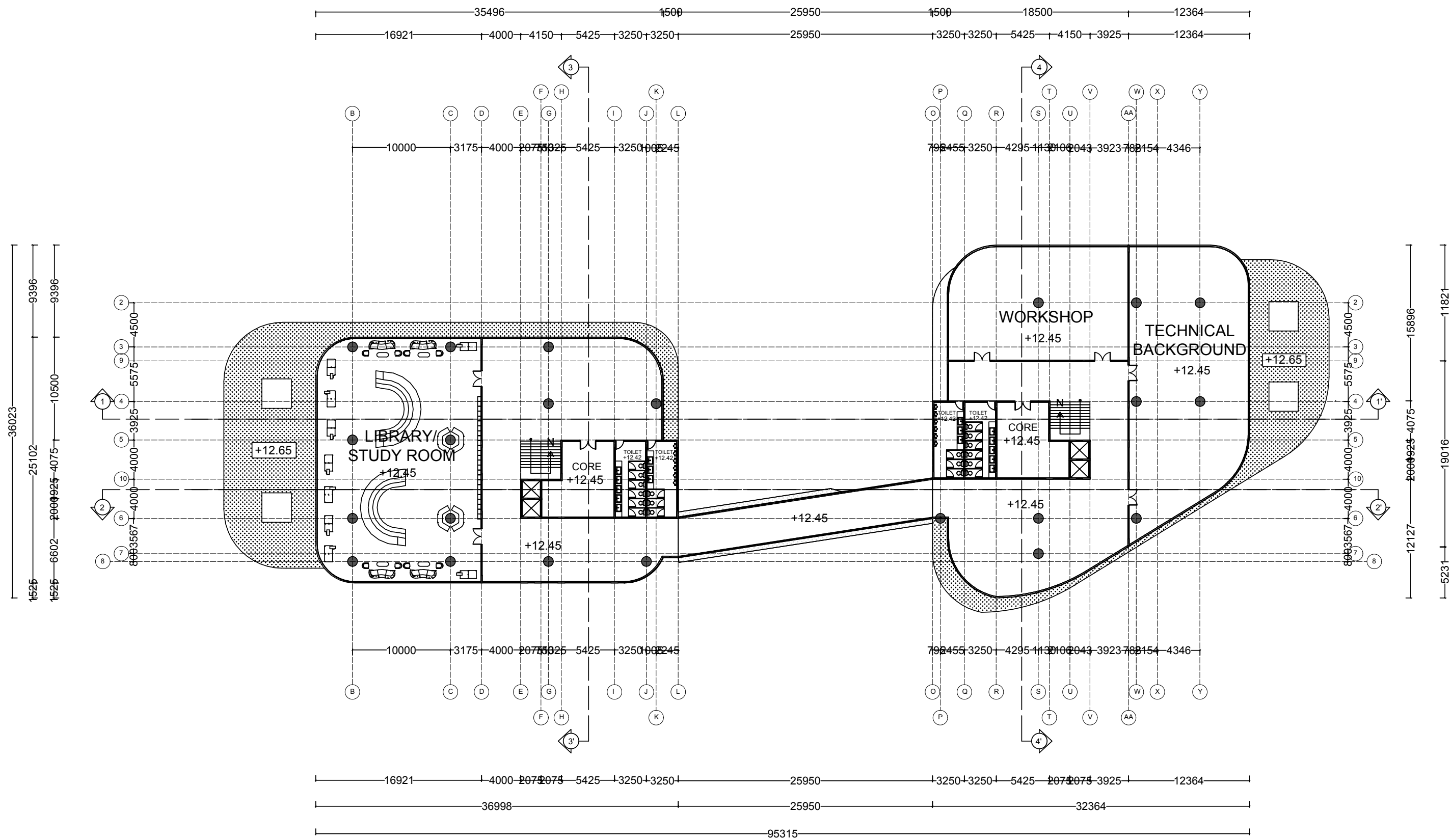
FLOORPLAN LEVEL 1  
SCALE 1: 350



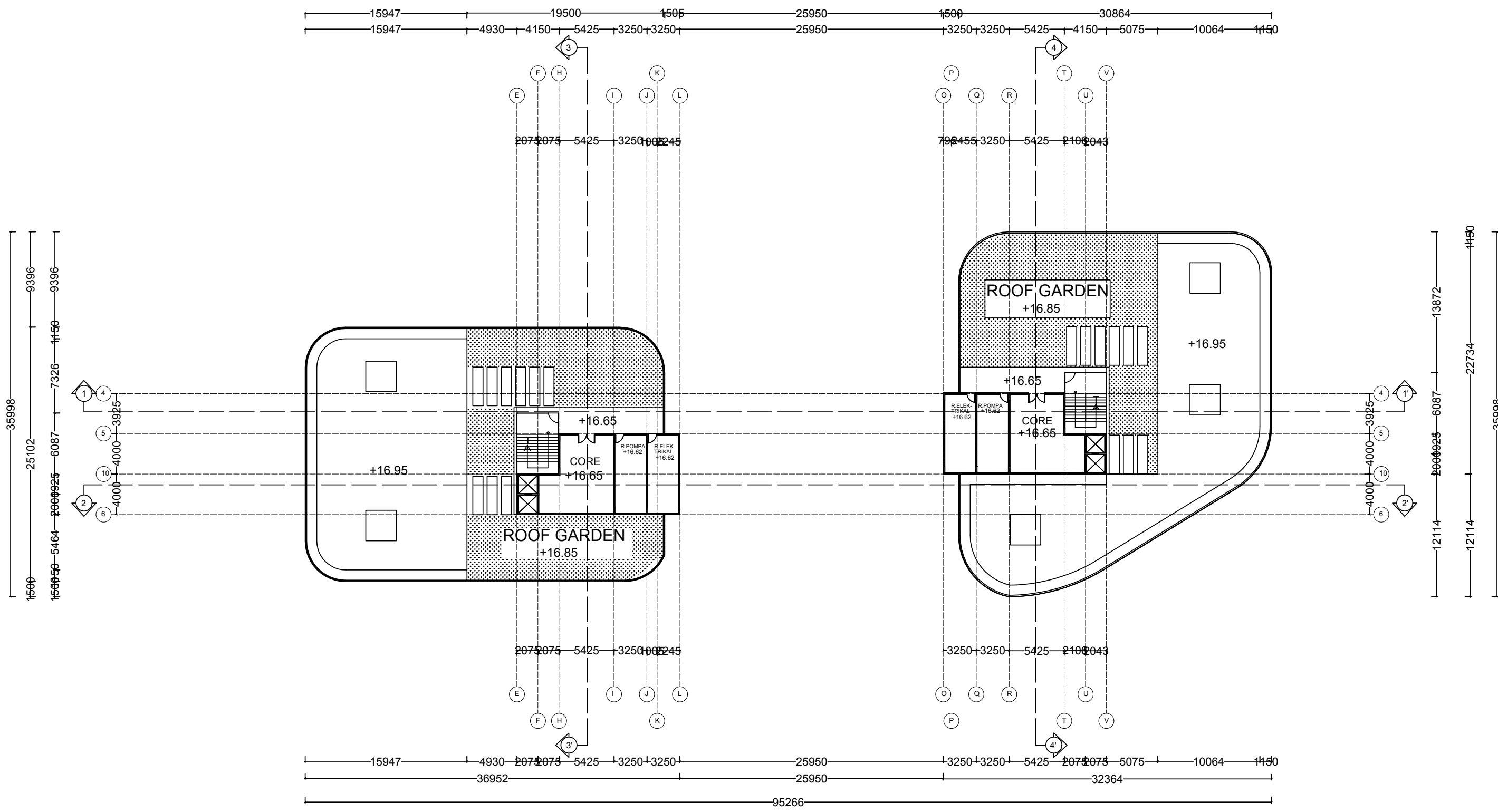
FLOORPLAN LEVEL 2  
SCALE 1: 350



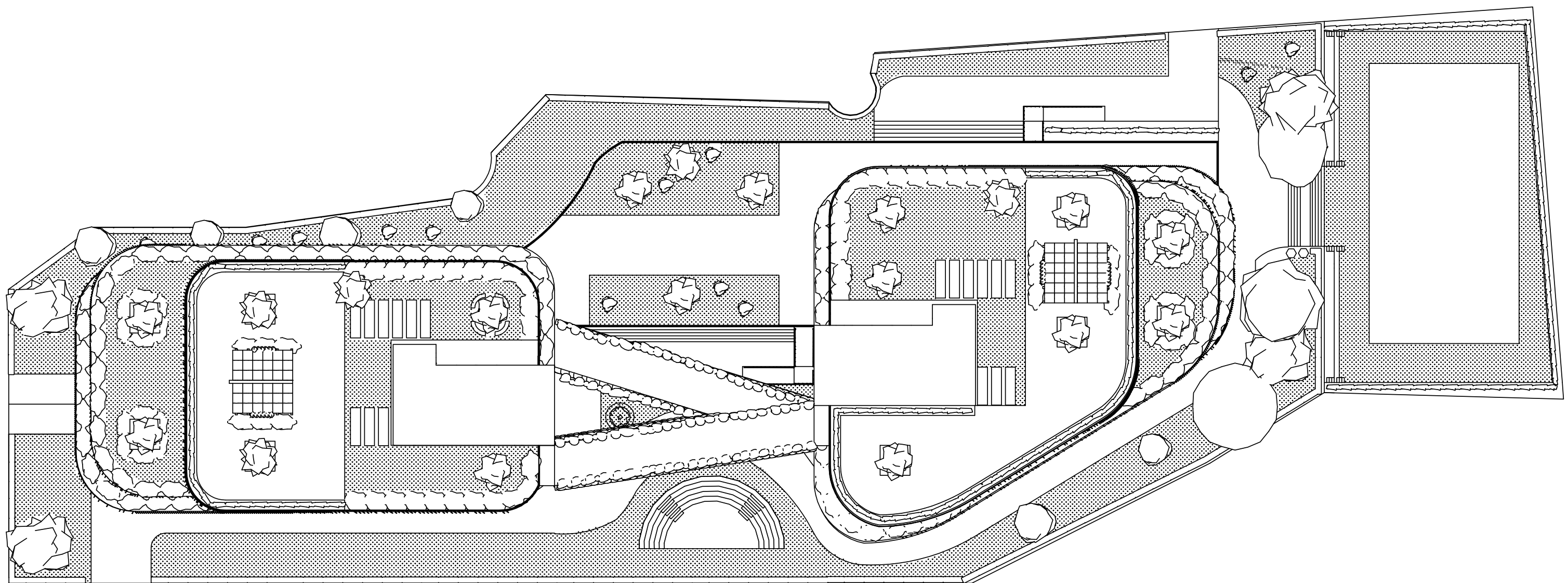
**FLOORPLAN LEVEL 3**  
SCALE 1: 350



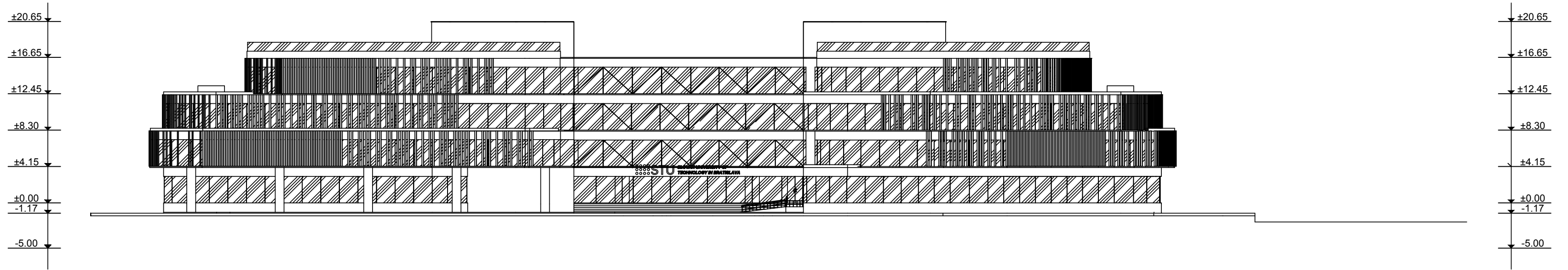
FLOORPLAN LEVEL 4  
SCALE 1: 350



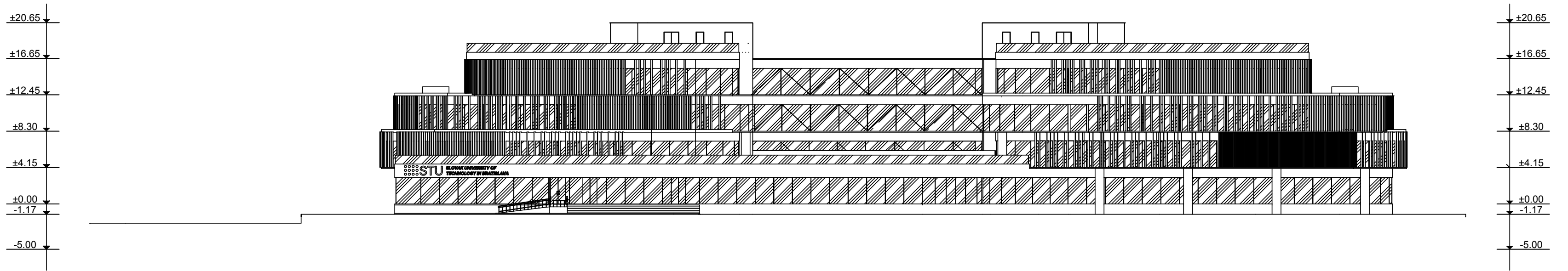

**ROOF FLOORPLAN**  
 SCALE 1: 350



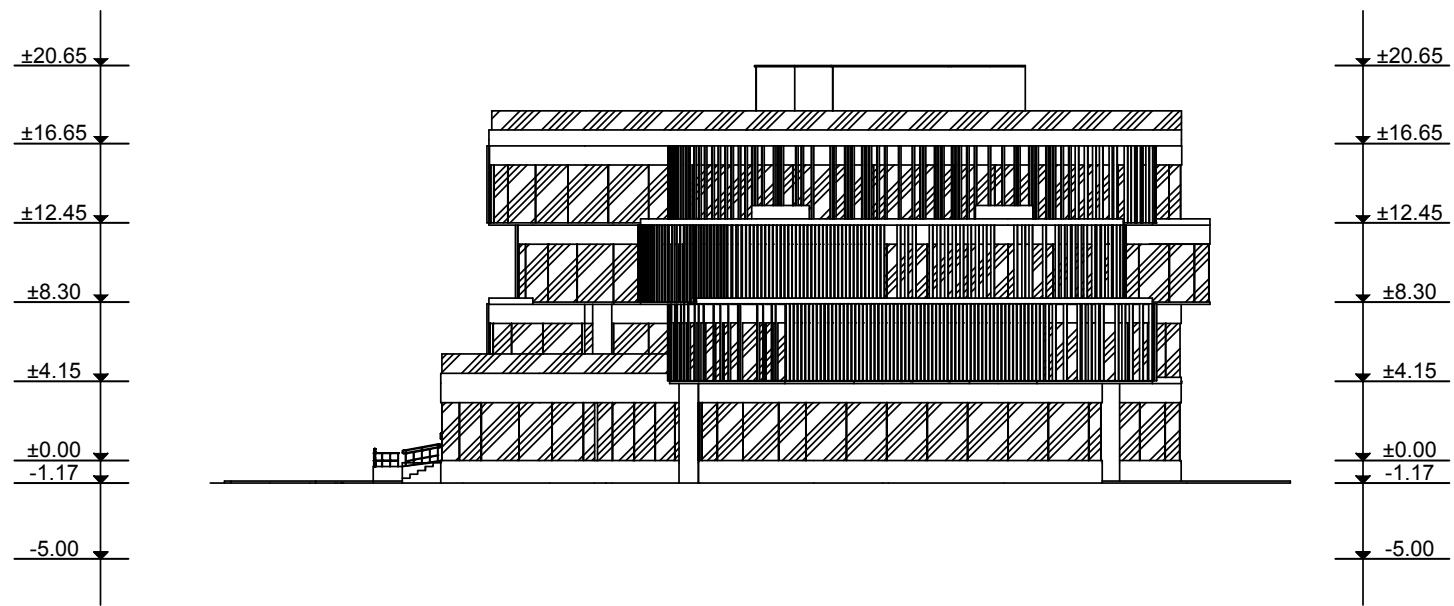
TOP VIEW  
SCALE 1: 350



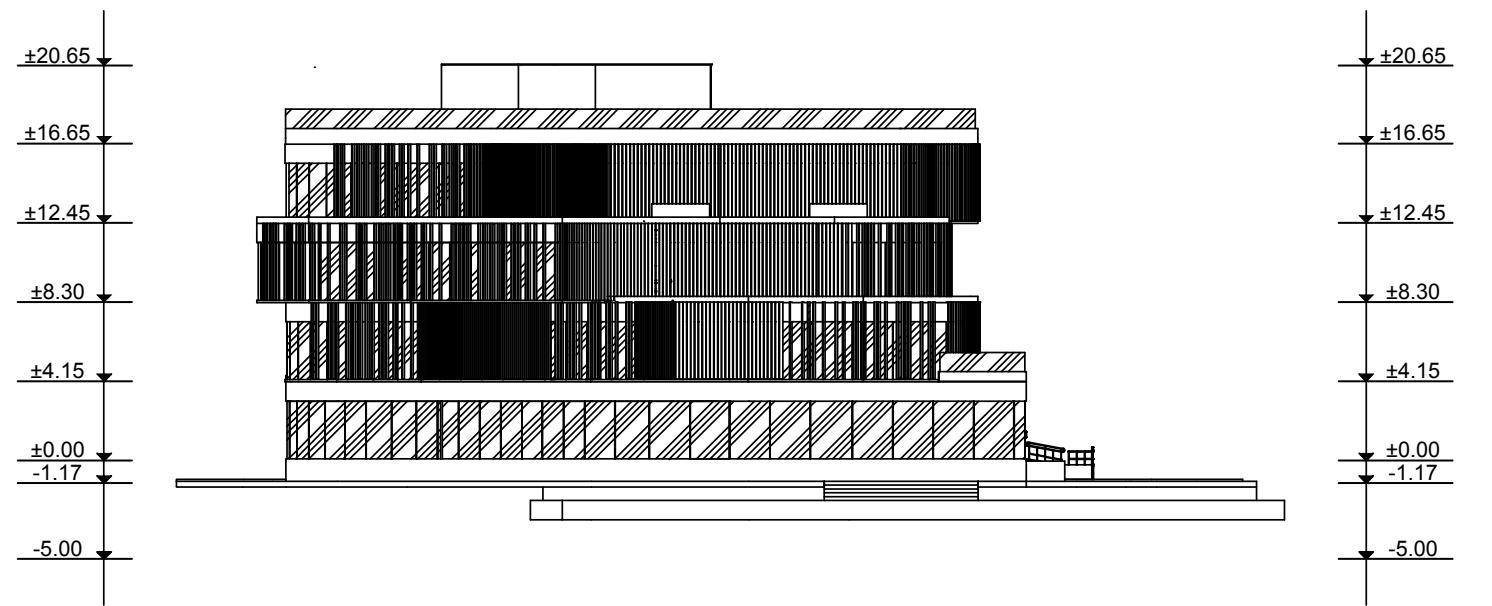
FRONT ELEVATION  
SCALE 1:350



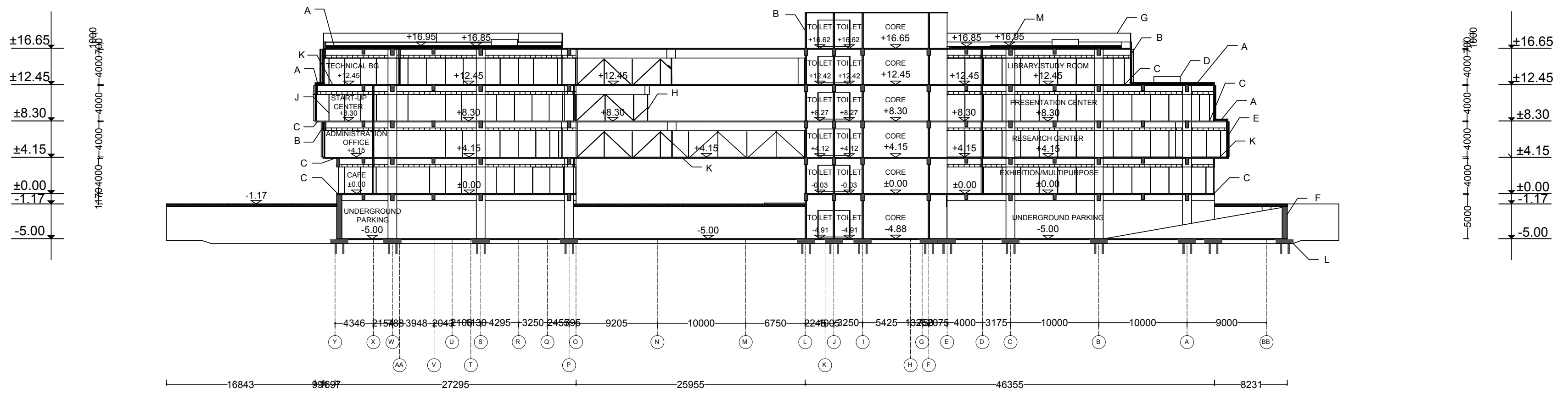
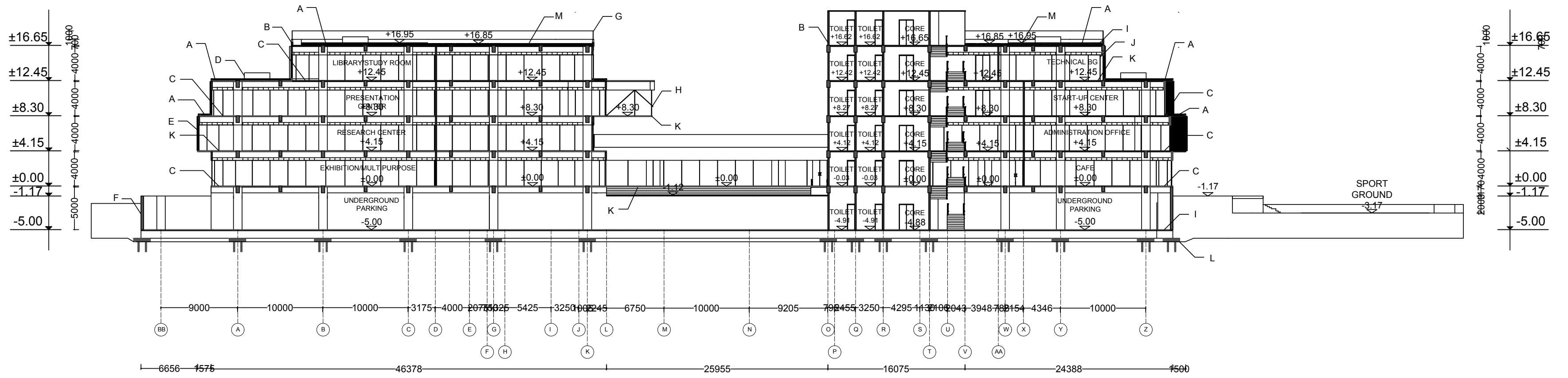
BACK ELEVATION  
SCALE 1:350

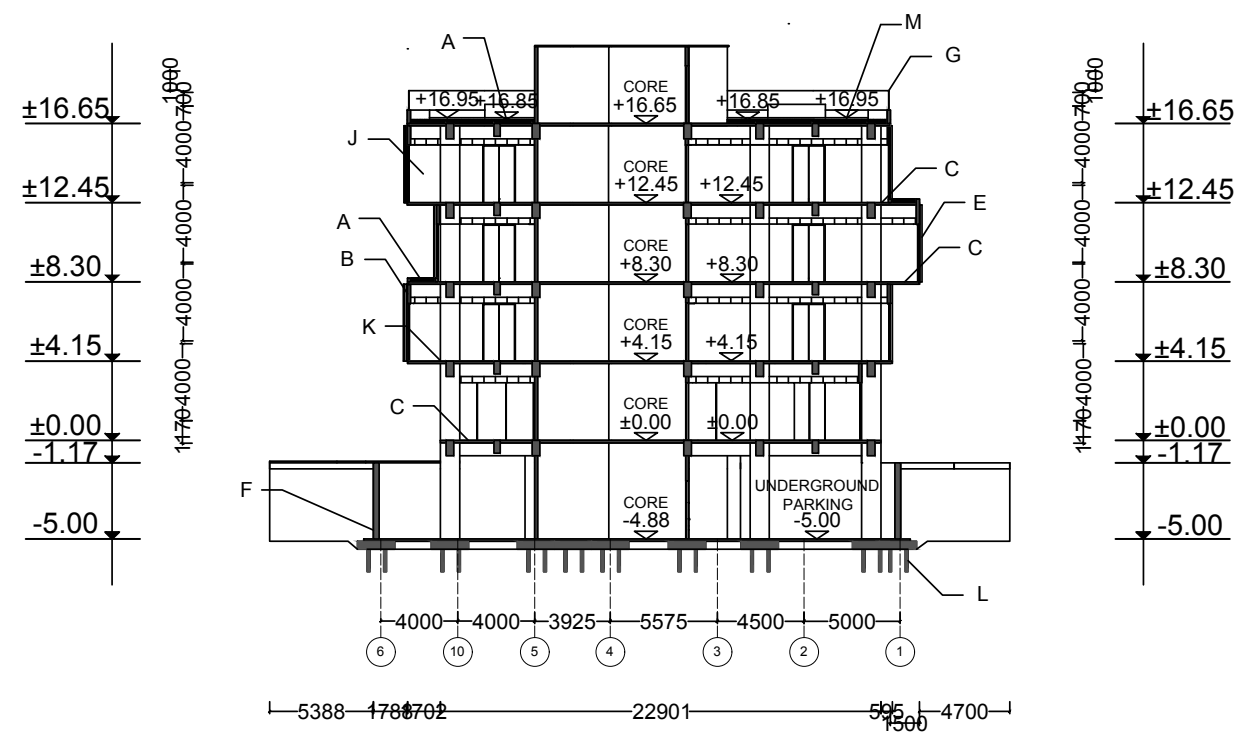


RIGHT ELEVATION  
SCALE 1: 350



LEFT ELEVATION  
SCALE 1: 350

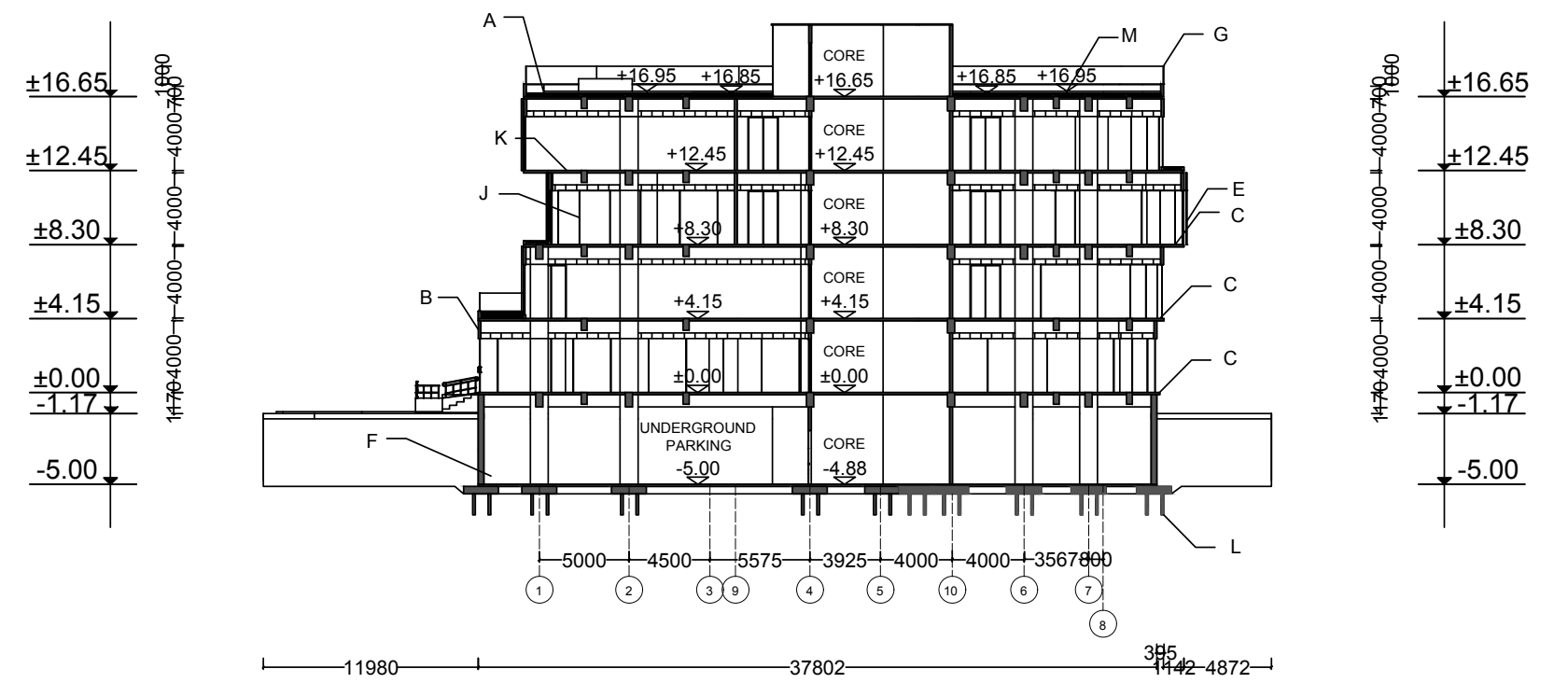




SECTION 3-3'  
SCALE 1: 350

LEGEND :

- |   |                                  |
|---|----------------------------------|
| A ROOF GARDEN'S SOIL LAYER 200 MM                                     | H CREMONA                        |
| B HEBEL BRICK   | I CONCRETE FLOOR PLATE 200 MM    |
| C CONCRETE FLOOR PLATE 150 MM   | J GLAZED LOW E GLASS 12 MM       |
| D BOX PLANTER   | K WAFFLE SLAB FLOOR PLATE 150 MM |
| E RECYCLED HARDWOOD BOARD 4000 X 200 X 30 MM<br>FIN. LIGHT GREY PAINT | L PILE FOUNDATION                |
| F CONCRETE RETAINING WALL 300 MM                                      | M WOODEN DECK                    |
| G TEMPERED GLASS 12 MM  |                                  |

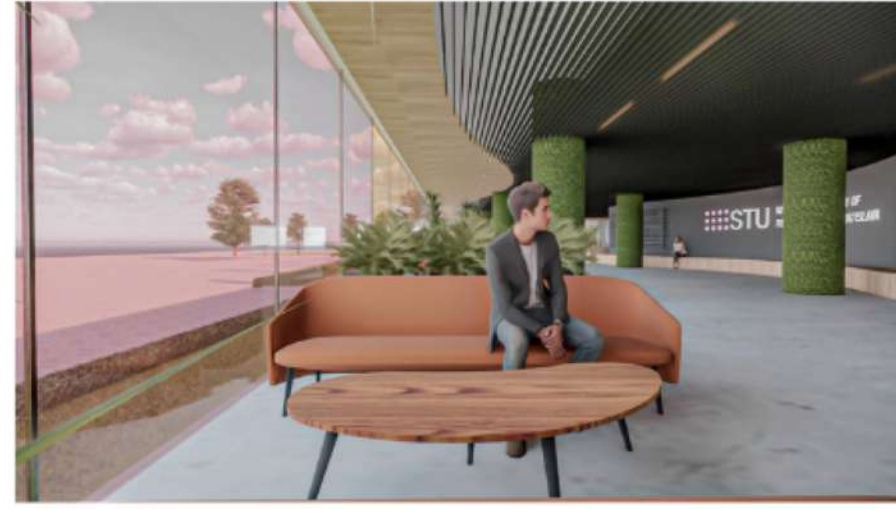


SECTION 4-4'  
SCALE 1: 350

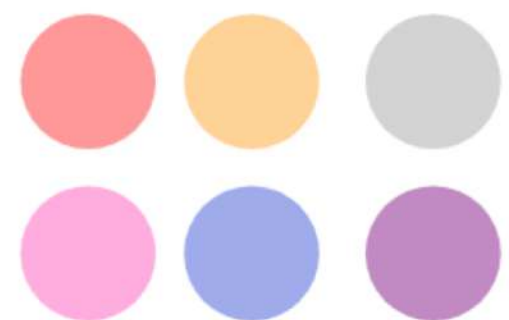
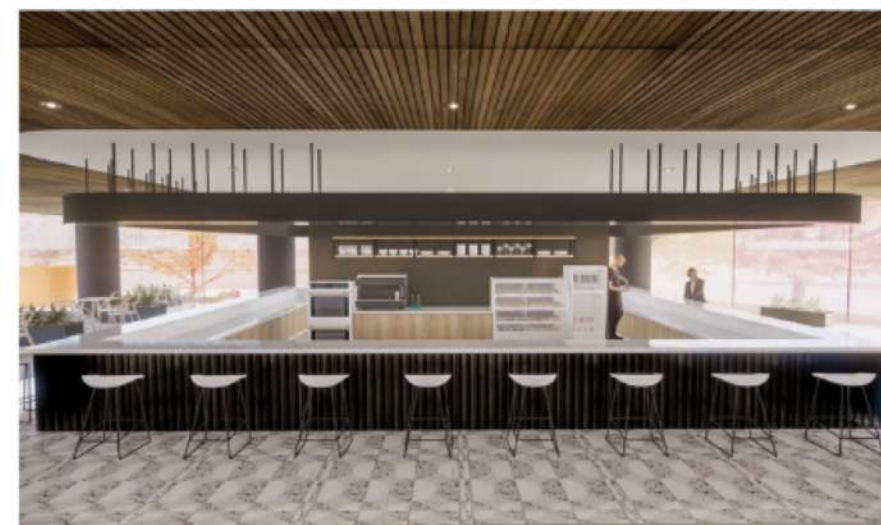
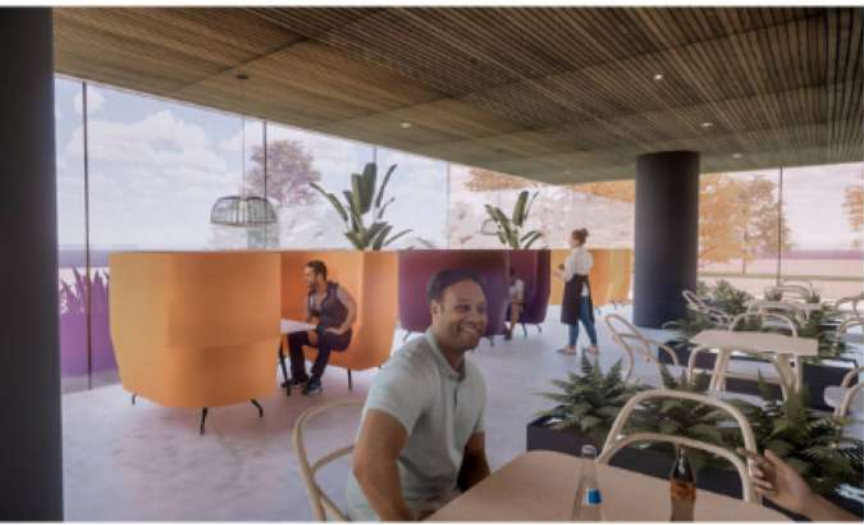
LEGEND :

- |   |                                  |
|---|----------------------------------|
| A ROOF GARDEN'S SOIL LAYER 200 MM                                     | H CREMONA                        |
| B HEBEL BRICK   | I CONCRETE FLOOR PLATE 200 MM    |
| C CONCRETE FLOOR PLATE 150 MM   | J GLAZED LOW E GLASS 12 MM       |
| D BOX PLANTER   | K WAFFLE SLAB FLOOR PLATE 150 MM |
| E RECYCLED HARDWOOD BOARD 4000 X 200 X 30 MM<br>FIN. LIGHT GREY PAINT | L PILE FOUNDATION                |
| F CONCRETE RETAINING WALL 300 MM                                      | M WOODEN DECK                    |
| G TEMPERED GLASS 12 MM  |                                  |

ENTRANCE (LEVEL 1)



CAFE (LEVEL 1)



# TRAVERSE THROUGH COLORS

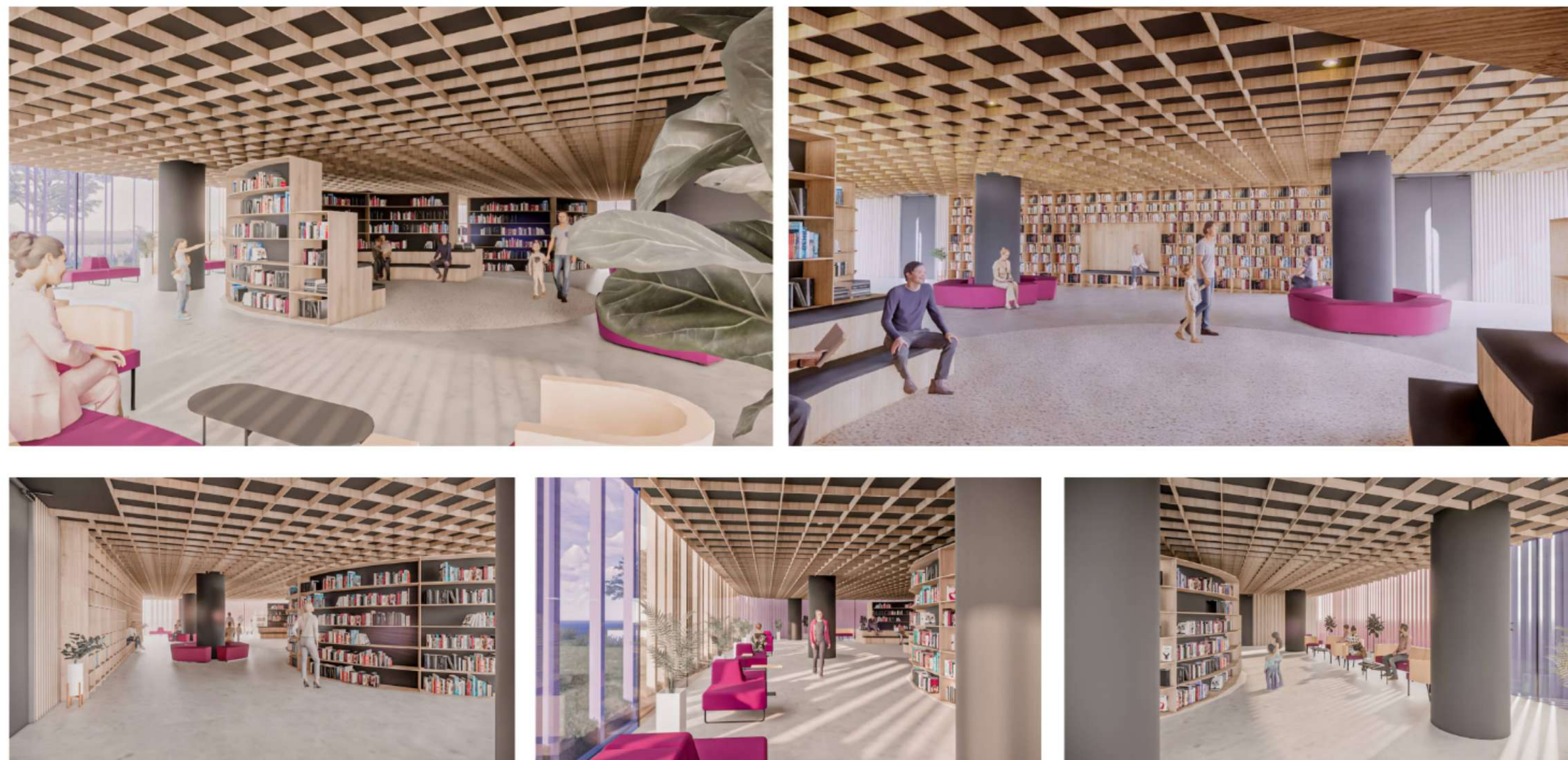
*CONTEMPORARY WITH HUMAN BEHAVIOR*

adjusting contemporary elements according to spatial functions with similarities in form and color.

ADMINISTRATION OFFICE (LEVEL 2)



LIBRARY (LEVEL 4)



# TRAVERSE THROUGH COLORS

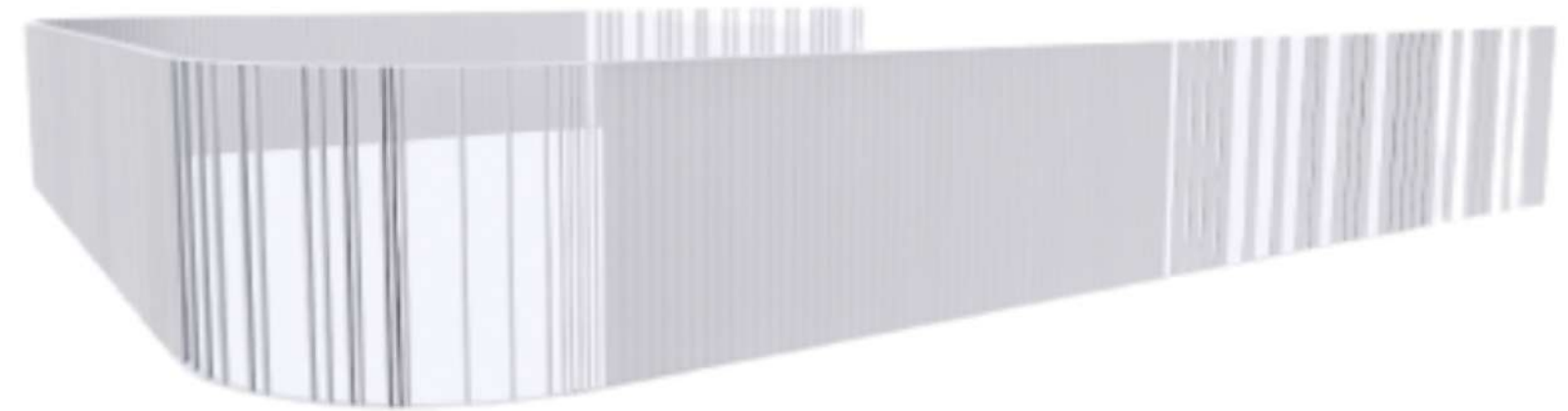
*CONTEMPORARY WITH HUMAN BEHAVIOR*

adjusting contemporary elements according to spatial functions with similarities in form and color.

 **TRAVERSE**  
**THROUGH COLORS**

**EDUCATIONAL COMMERCIAL SPACE WITH SUSTAINABLE AND ADAPTIVE COLORFUL-CONTEMPORARY APPROACH**

- SUSTAINABLE SECOND SKIN MADE OF RECYCLED WOOD BOARD WITH GREY PAINT FINISHING & IRON PLATE



**CONTEMPORARY WITH HUMAN BEHAVIOR**

- DOOR DESIGN WITH NEUTRAL COLOR AND CURVED LINES WITH CONSIDERATION OF HUMAN BEHAVIOR DURING PANDEMIC TIMES (THE USE OF FOOT DOOR OPENER & DOOR CLOSER)

