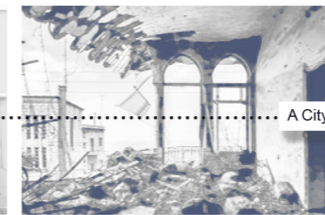
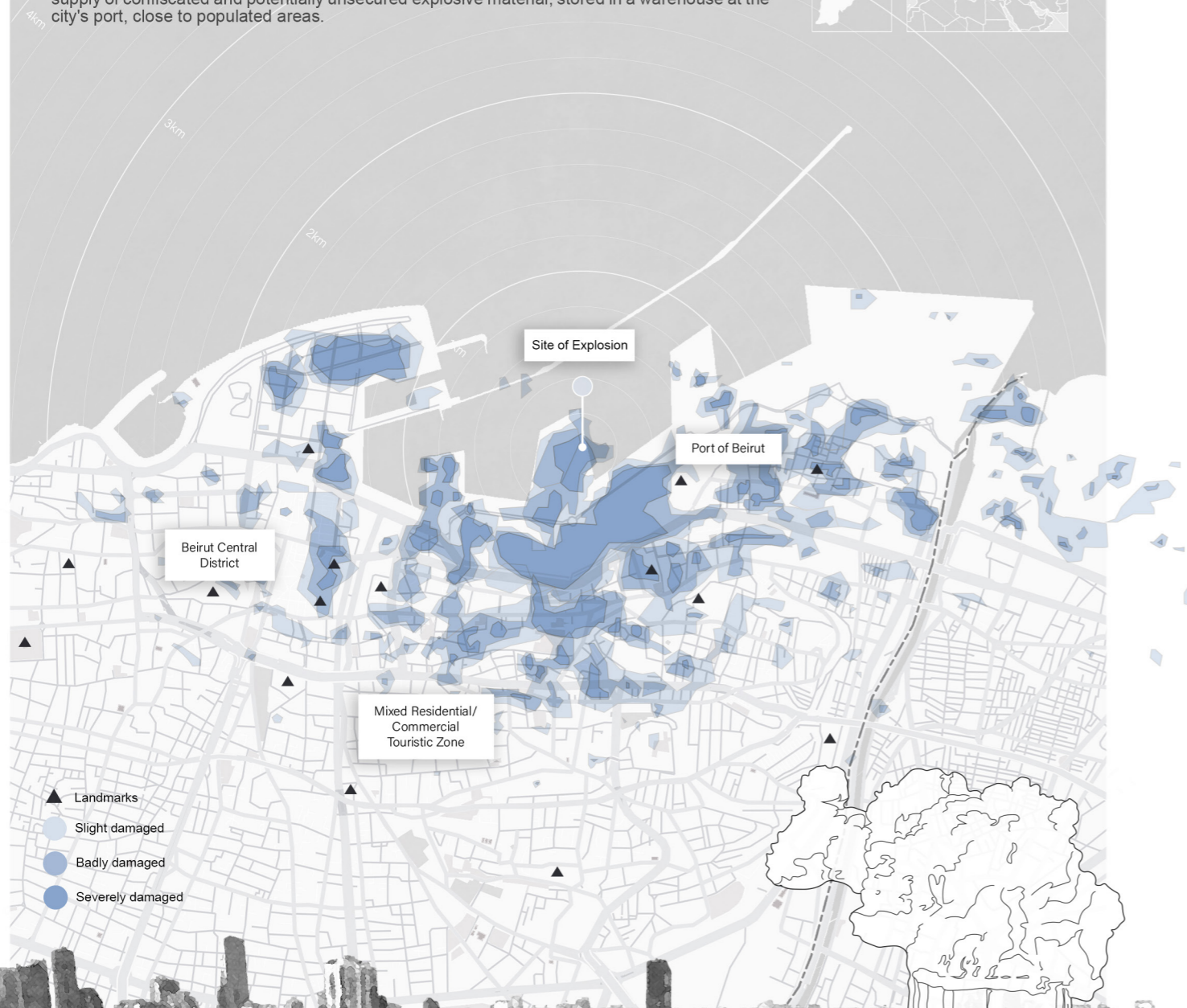
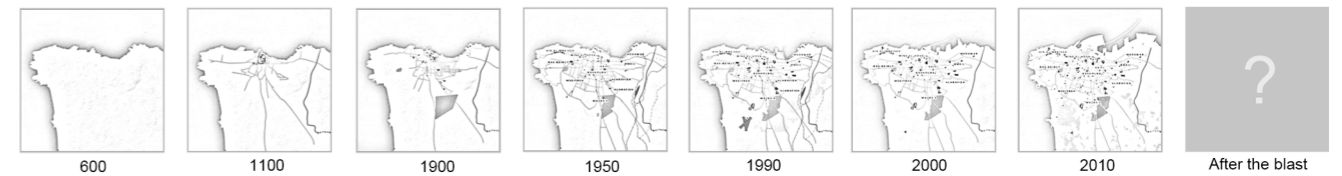


BEIRUT BLAST. Aug 04, 2020. Beirut, Lebanon.

A massive explosion rocked the Lebanese capital of Beirut at 6:07 p.m. local time Tuesday evening, leaving at least 135 dead and thousands injured. The blast has been linked to a large supply of confiscated and potentially unsecured explosive material, stored in a warehouse at the city's port, close to populated areas.



Historical maps of Beirut



Beirut is the capital and largest city of Lebanon, which is one of the oldest cities in the world, having been inhabited for more than 5,000 years. The civilization of this city began with the seaport. According to the historical maps, Beirut has kept expanding radially from the north coast since Phoenician period. Relying on the maritime trade and traffic, Beirut has developed for thousand years - it is the port of Beirut which has provided it with a vitality stimulus.

However, the huge explosion in 2020 has made this base point become chaotic. The long-standing trauma has cast a helpless gray on Beirut, and a large number of original residents even moved out of Lebanon under the stimulation of this blast. In media reports, "nightmare" is used to describe the reconstruction of the port. How should Beirut rehab after the explosion? What the city currently needs may not only be a new functional place, but a new starting point that can inject vitality into the city...that is, how to bring the "hope" that people expect?