

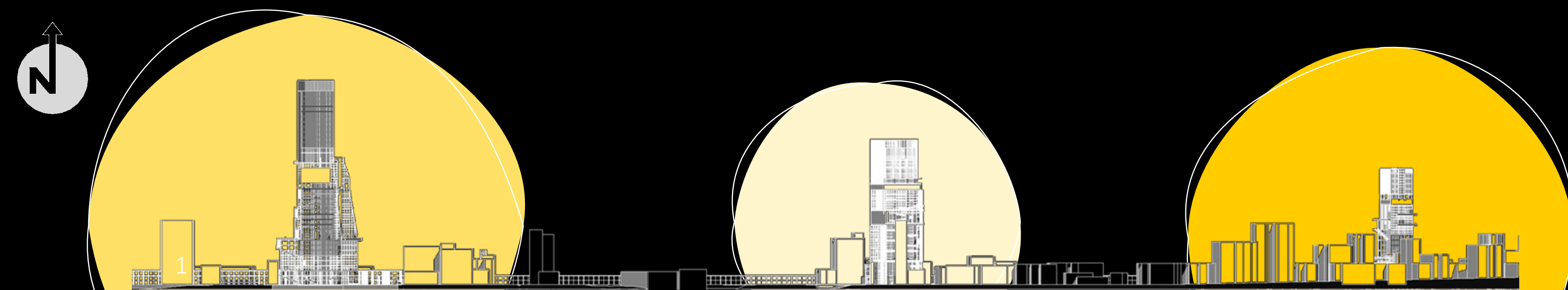
NEO BEIRUT

Work/Live/Play

An Innovative Urban Response: Neo Beirut

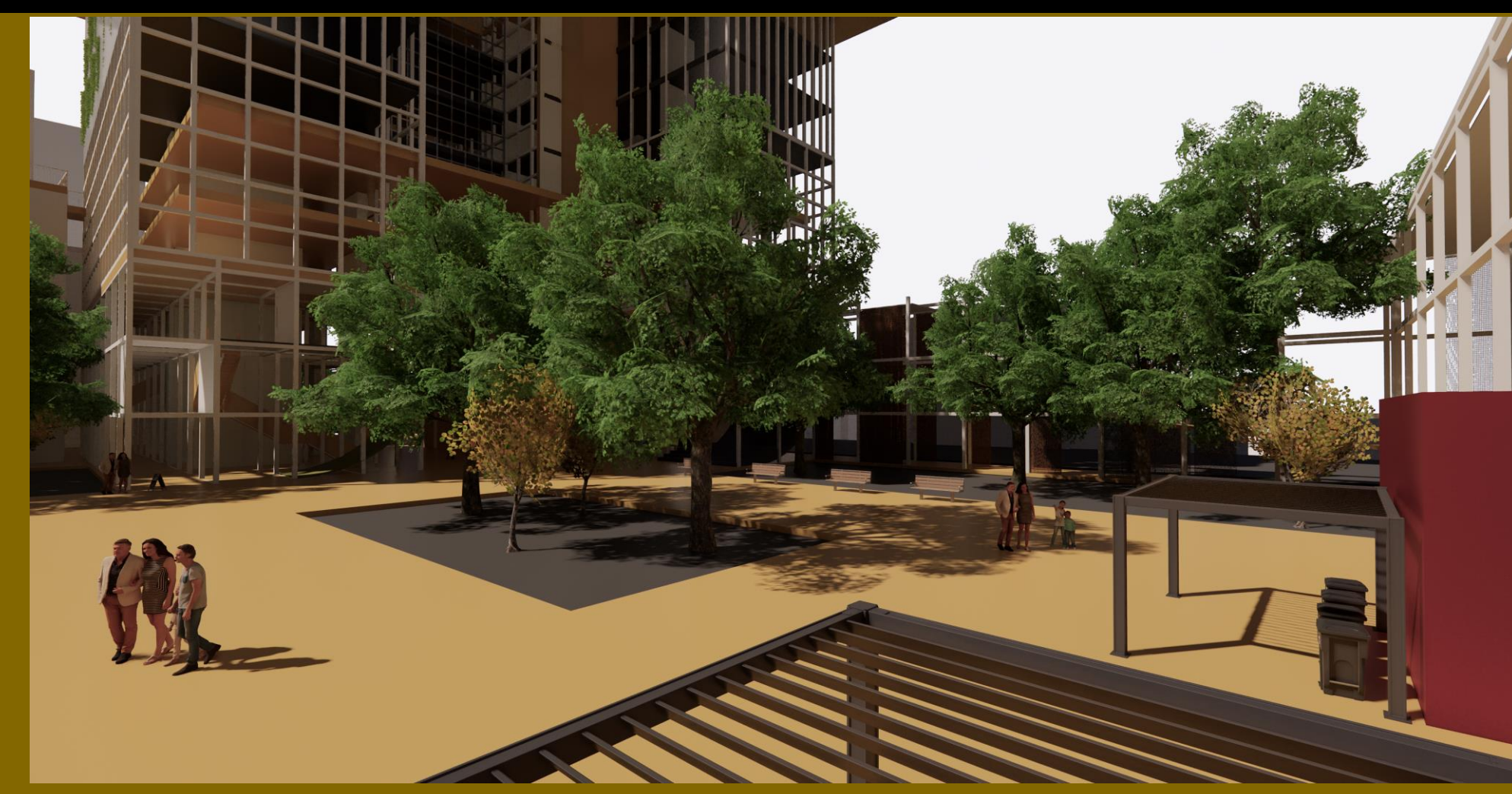
Neo Beirut: Rehabilitating the neighborhood of Gemmayzeh into a contemporary **ECO-DISTRICT** by sustainable interventions and placemaking/bottom-up approaches to the urban fabric. Studying the neighborhood as the key component for *resilient city building* or the establishment of a resilient city-system.

Challenge

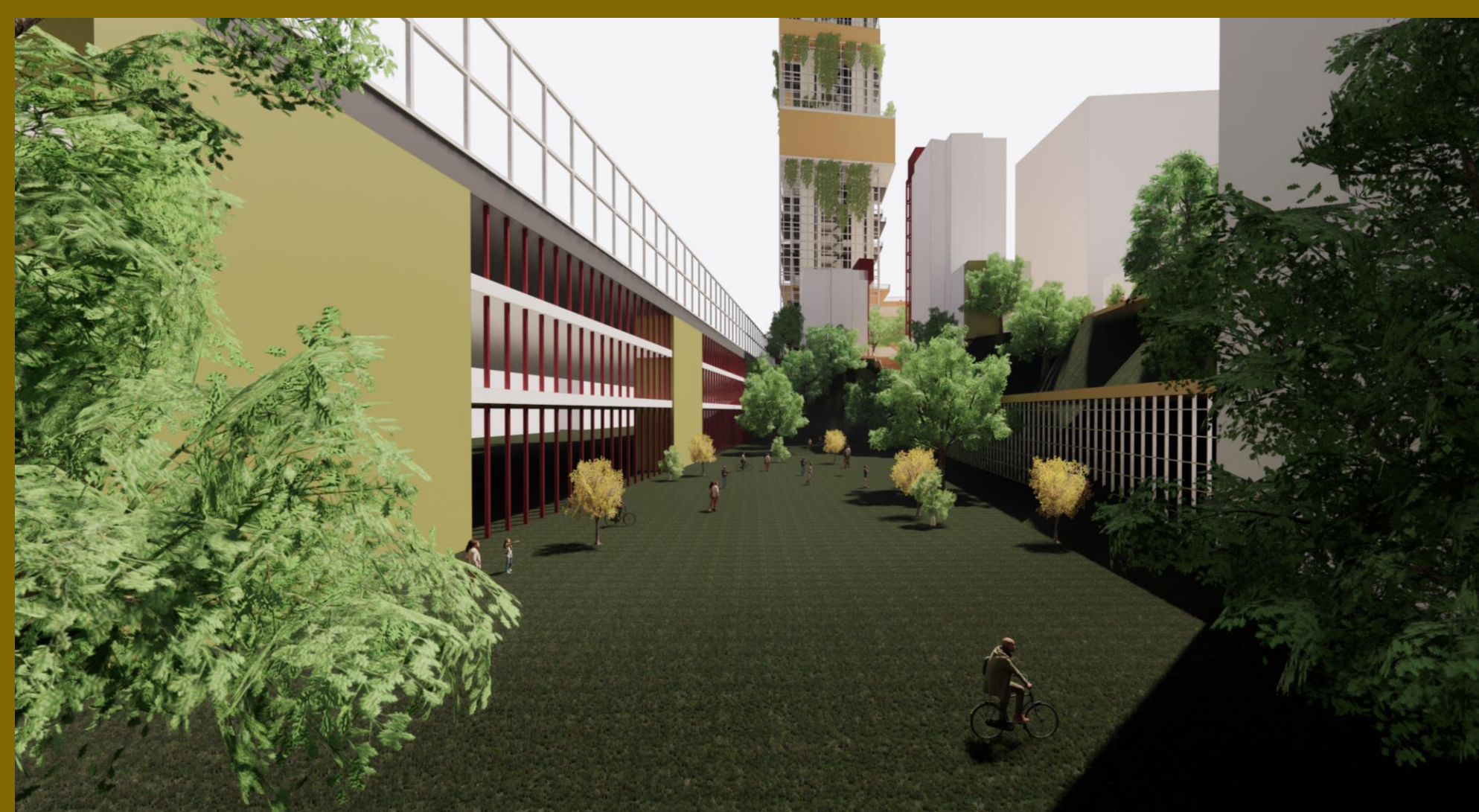


The challenge involves restructuring and rebuilding a solid and resilient public realm conceived for workaday commercial activities to now serve 24/7 urban lifestyles with a high level of livability.

1 Using the nearby parking lot of Quasar tower as a new plaza for **STREET WASTE COLLECTION AND AS A RECYCLING NODE**, to collect the waste of the neighborhood, and then send them to the Charles El Helou Recycling plant.



2 Using the central plot located across the Charles el Helou station as a focal point for the **GROUND-LEVEL INTERVENTIONS** and the Charles El Helou Station as **WASTE MANAGEMENT PLOT** & creation of cyclical job opportunities.



3 Using the plot near the Church of Saint Antoine and la cote tower, and create **A PUBLIC PARK** in this strategic location, aiming to **MAXIMIZE THE CONNECTION** between the project and the community by offering a safe zone for pedestrians

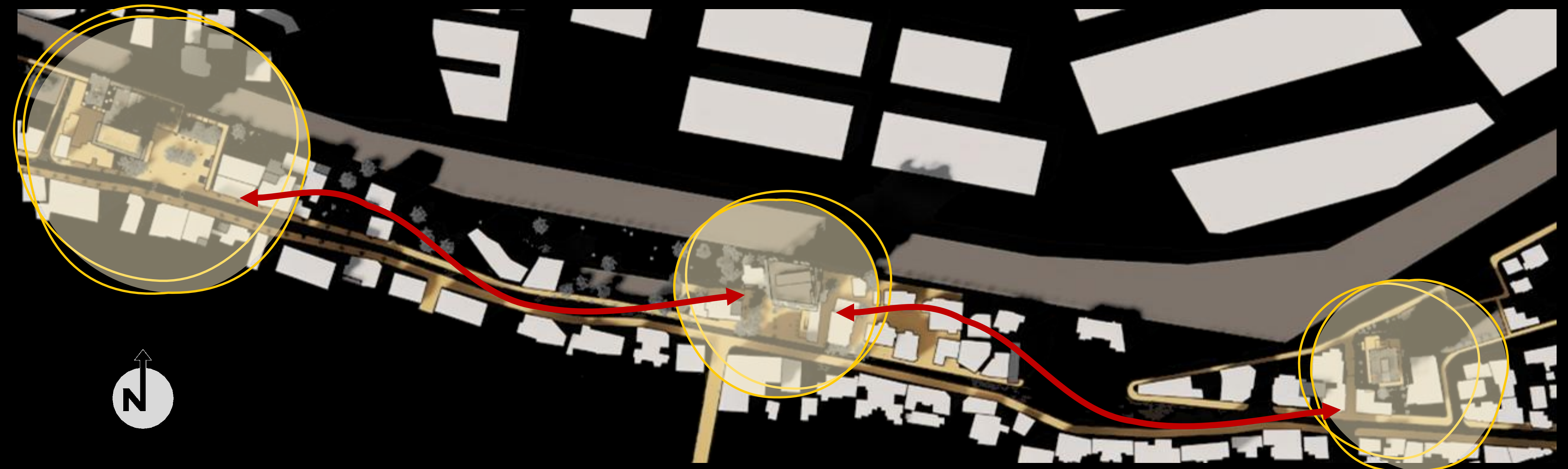


Small scale interventions for the **GREATER GOOD**

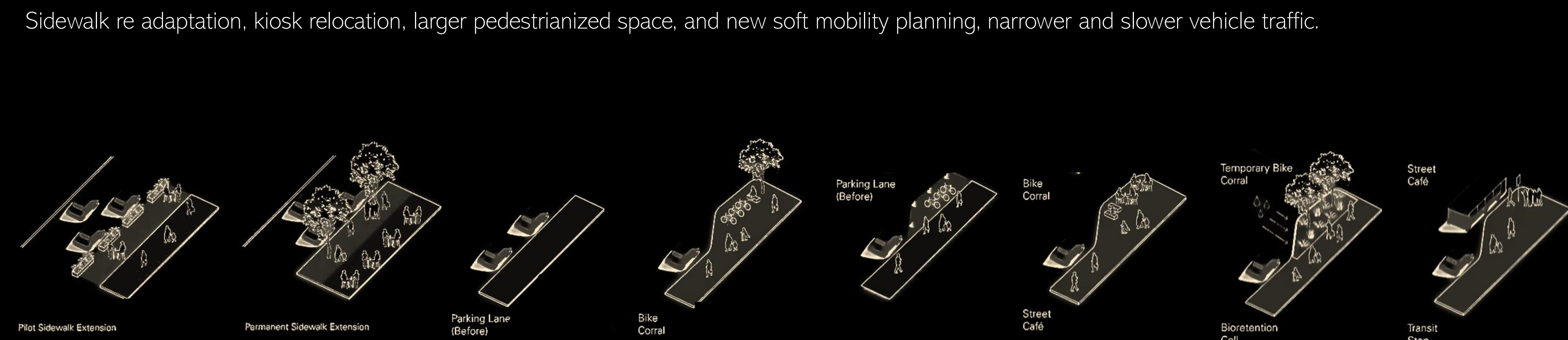
Follow the **YELLOW** ; From the ground up, creating a suspended street by means of a recognizable signaling system.

At the ground level, a public passageway/new street crosses through the exploded centers of the towers, leading to a designed place (from a space to a place).

VISUAL CODING



PHYSICAL CODING



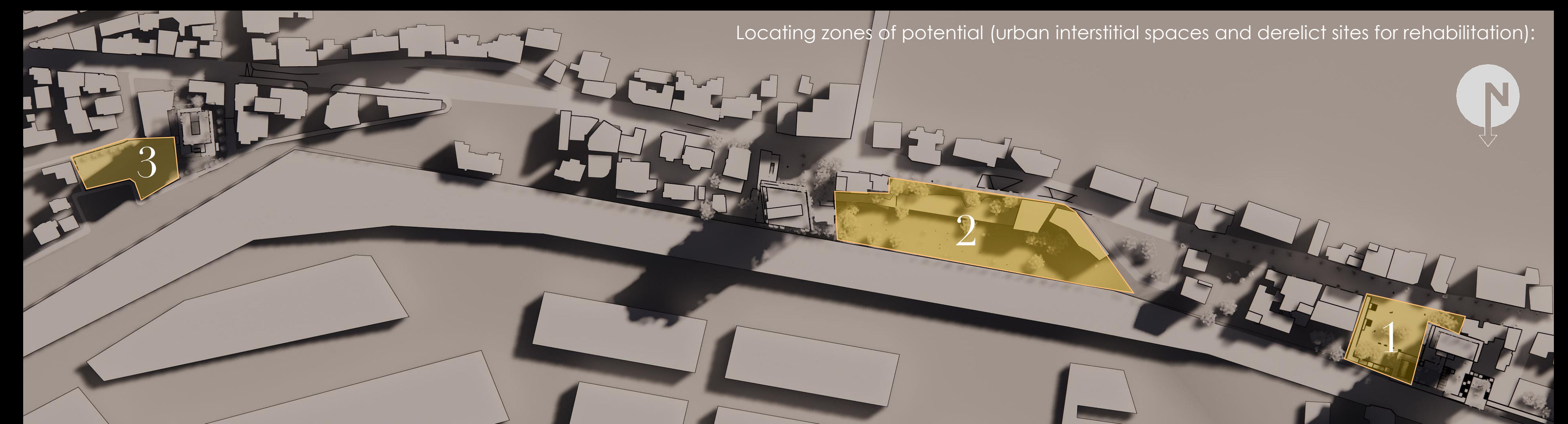
MOTOR INTERVENTIONS: ANCHORED IN SUSTAINABILITY

Sustainable



The 'ex-novo' interventions would be a waste to energy plant system applicable to the clusters in the neighborhood, and a grid system containing kiosks and an aquaponics farm that act as the connector body of the entire proposal, both for the public spaces and for the programs of the various buildings, which are also related to the public pedestrian route, finally giving an answer to the problem of mobility. Additionally,

Potential



Locating zones of potential (urban interstitial spaces and derelict sites for rehabilitation):