



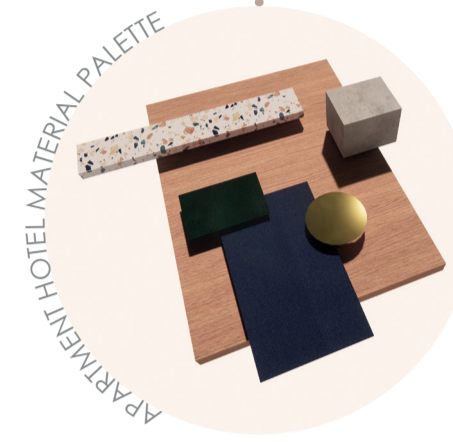
ZONING MAP



- EXHIBITION
- CAFÉ
- LIFT
- STAIRS
- RESTROOM
- VOID
- APARTMENT HOTEL
- SHARED KITCHEN
- HALLWAY

MATERIAL PALETTE

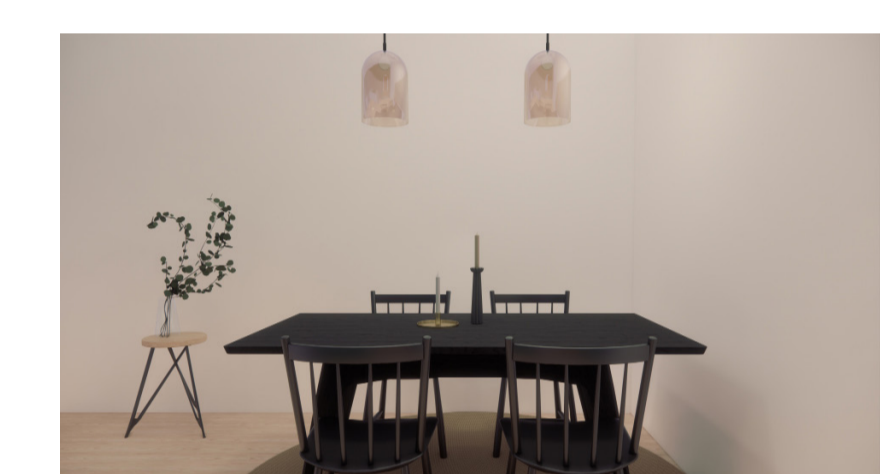
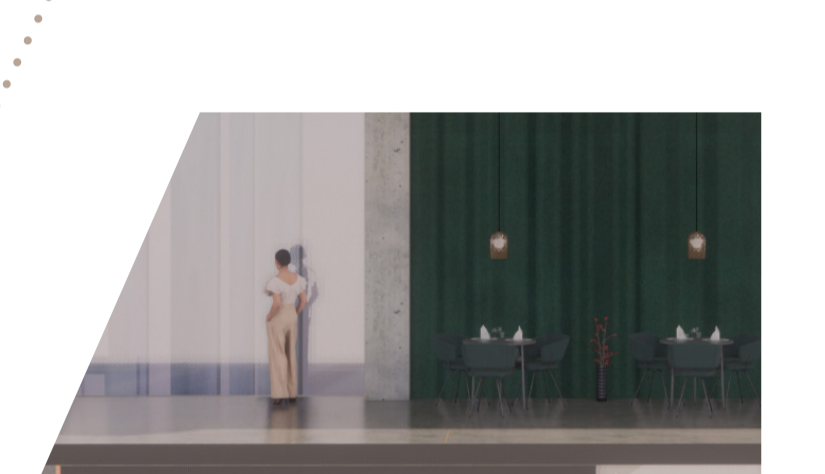
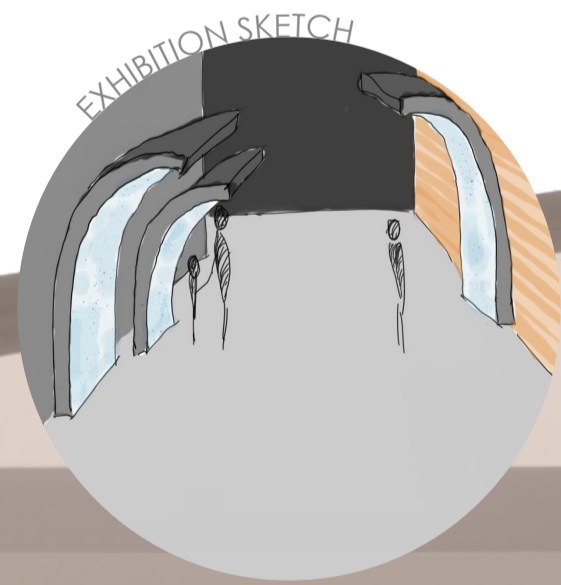
Materials present in the apartment hotel bedrooms are hardwood panels, concrete floors, gold fixtures, white terrazzo tiles, dark blue and dark green textiles.



FIRST FLOOR PROPOSED PLAN

When the visitors walk up the main staircase they will see an entrance for the apartment hotel to the left. The hotel has two double ensuite rooms and one single ensuite room on each floor and a shared kitchen. To the right of the main stairs is the fishing industry exhibition continued, a small café offering refreshments for 10-12 persons. There are toilets for visitors near the fire escape and the exhibition exit.

Section AA



EXHIBITION ENTRANCE

CAFÉ AREA

APARTMENT HOTEL

