

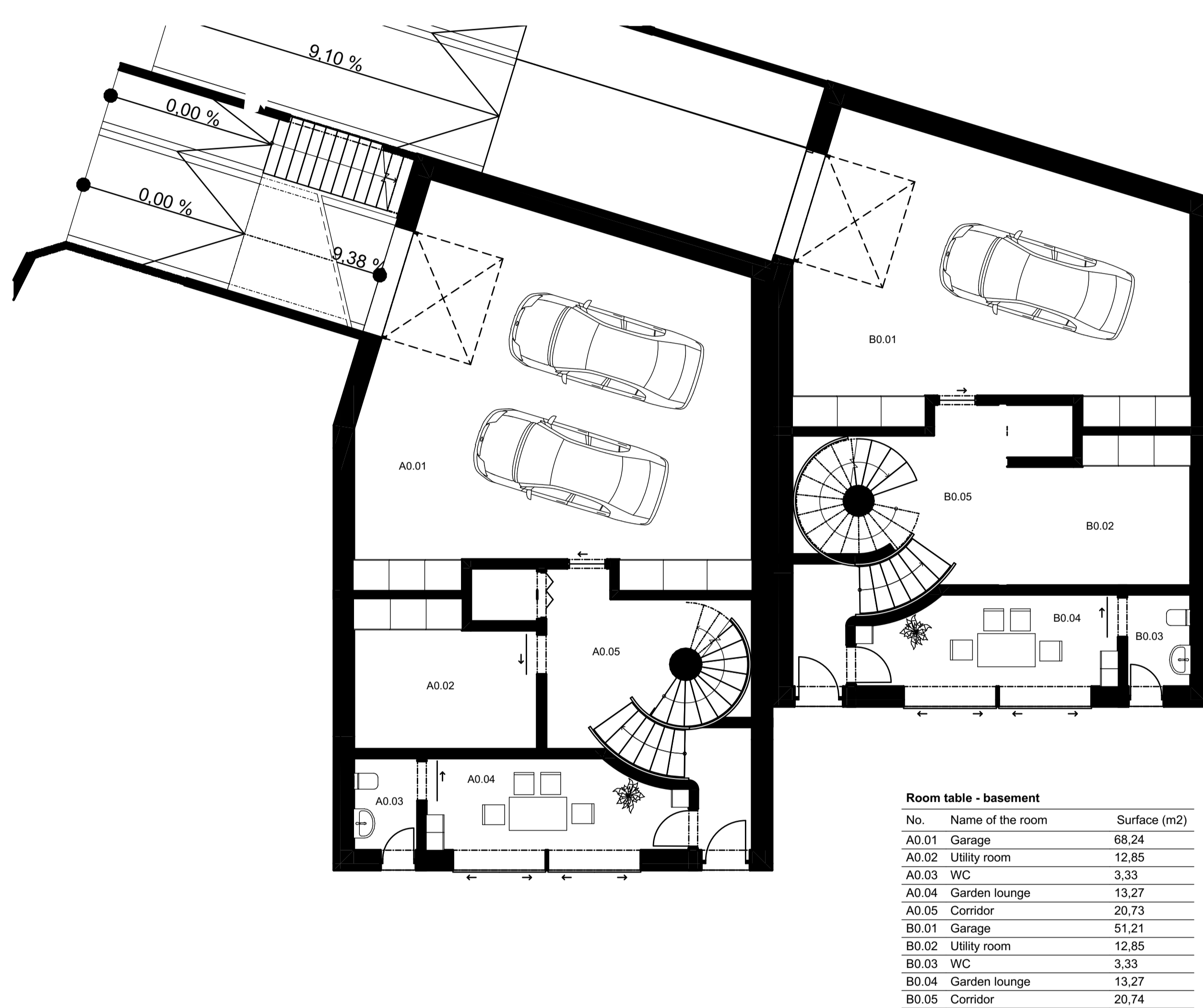
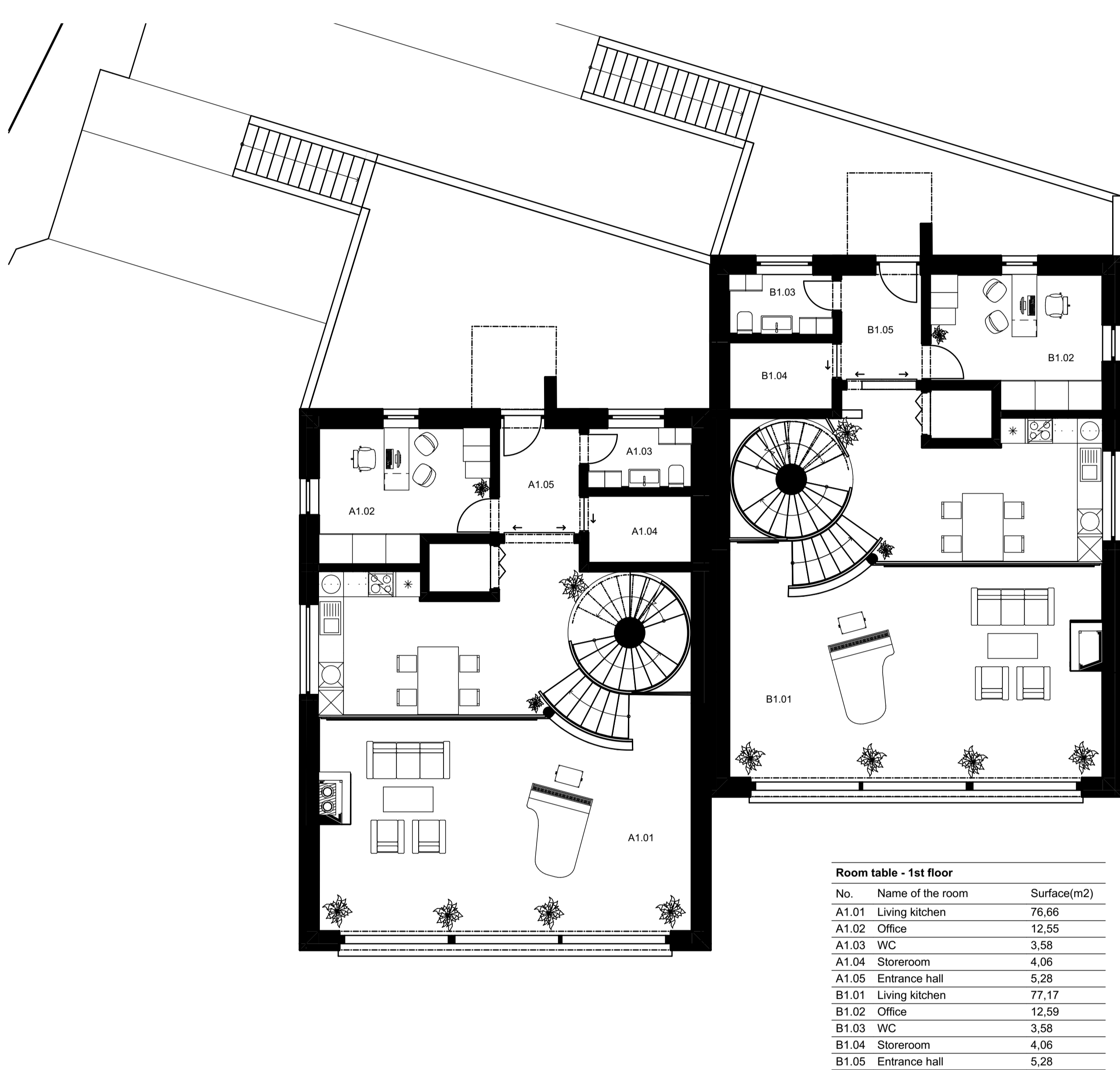


MARIO BARRA, II. YEAR BAK.  
WINTER TERM 2020/21, ATBS

VILLA VINEA

FACULTY OF ARCHITECTURE CTU IN PRAGUE  
STUDIO GIRSA, DEPARTMENT OF ARCHITECTURAL CONSERVATION

GROUND FLOOR PLAN M 1:150



VILLA VINEA is a multi-family residential building, inspired by the work and distinctive style of architect Adolf Loos, the 150th anniversary of whose birth we celebrated in 2020. Despite being a new construction, it creates harmony with the surrounding villas of Hapansauka, also on account of its being set back from the street line and of its rotated position.

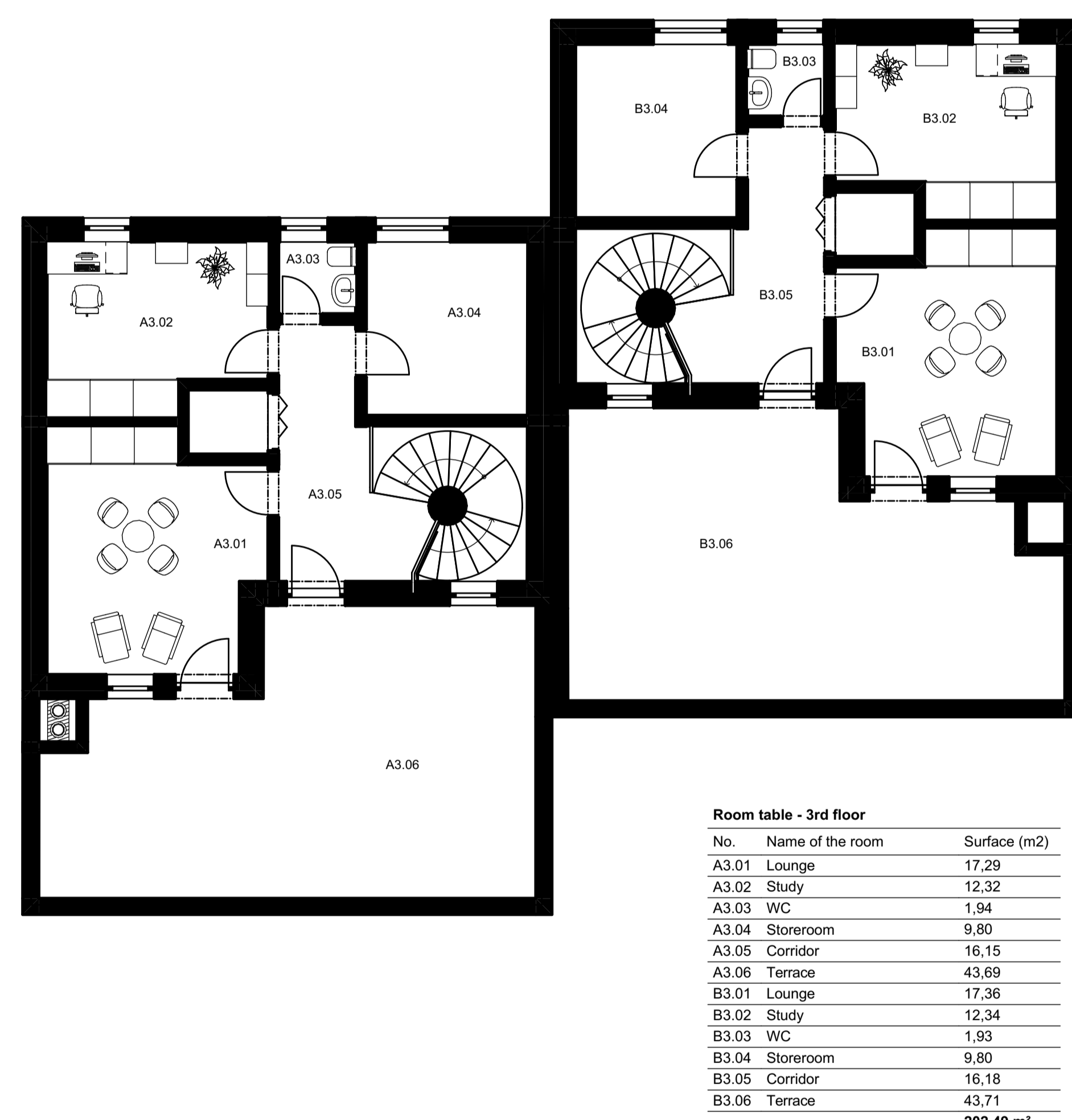
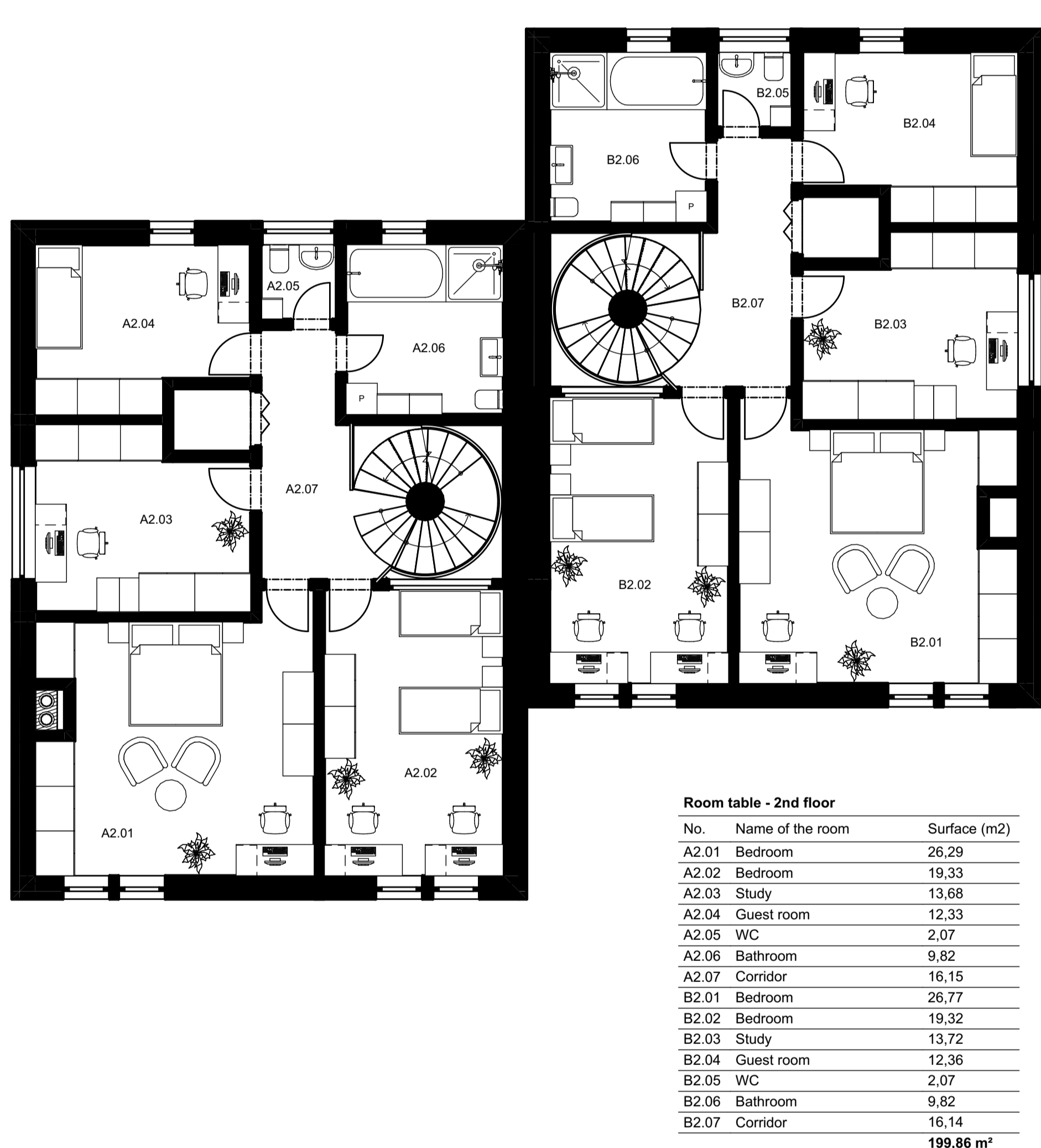
In designing this house, I worked with several important principles. The first one is the 'triumphant', a unique element in 20th-century architecture (1st floor). The other is the building's orientation of 27° on its plot, thanks to which the building communicates with Prague Castle from its living room or the spacious terrace on the 3rd floor. The facades are characterised by plain lines and an asymmetry, typical for the work of Loos, the accent is then added to the whole project by the displacement of the eastern building by 1 meter above the western building.

In the 1st floor there is mainly a technological part and garages, the southern part then serves as a recreational zone for summer sitting, with large glass doors. The possibility of outdoor seating in bad weather allows the structure to be suspended on the higher floors of the building.

The 1st floor is the main living area of the house, a large part of which consists of a kitchen connected to the living room with a fireplace, which is typical of Loos's designs. In the northern part of the floor there is an office with a toilet and a warehouse, which allows use for the business activities of the owner, separate from the residential areas. The vertical connection of the whole house allows a spiral staircase in the middle of the house, for immobile people there is an elevator in the northern part allowing movement from the garage to the terrace.

Upstairs are two bedrooms, guest room, study, and a bathroom. French windows in the south façade allow residents a view of Prague, the sanitary facilities together with the guest room were situated on the north side, the study to the west.

The top floor serves primarily as a recreational part, for which there is a terrace on the south side and a lounge directly connected to it, on the north there is a quiet, separate study.



FLOOR PLAN 2ND FLOOR M 1:150

FLOOR PLAN 3RD FLOOR M 1:150

VIEWS M 1:150

