

The Living Community



Masterplan. 1:500

Plot size:
18500 sq. m

Total floor area:
3000 sq. m.

Plot ratio:
18%

Number of dwellings:
36 housing units

Dwellings per hectare:
19,5

Type of residents:
Social mix

Typology:
Terraced houses

Energy class.
Low energy class



Cluster isometric

Photovoltaics

The *Living Community* is characterized by very distinct roofs that define each individual dwelling. The roofs allow for optimal conditions for photovoltaics as the northern rows of the cluster are in two and three stories and the southern rows are only in one story. Therefore, the dwellings do not shade for each other but provide great opportunities to harvest as much sun as possible.

The photovoltaics is a means for the community to reach zero energy standards, and each cluster produces just around 47.900 kWh of energy per year (calculated with the tools Ladybug and Grasshopper) which corresponds to the total energy production of nearly 148.300 kWh per year for the whole community.

Masterplan

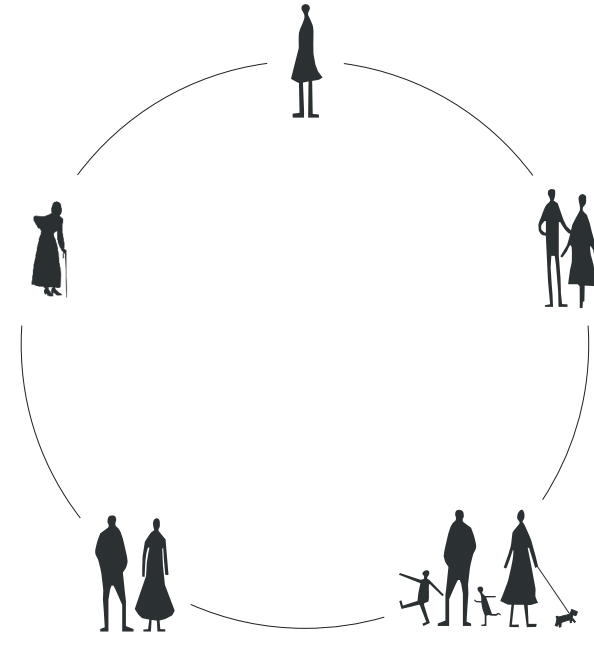
The *Living Community* is located in the outskirts of Arden surrounded by forest, agriculture and fresh air and forms the foundation of a new sustainable community. The community focuses on providing variety and diversity both in nature and in social interactions and therefore consists of 36 dwellings divided into three clusters with nature all around. The dwellings in each cluster are placed close together to create a feeling of coherence and solidarity with the neighbours. The dense settlement creates the possibility for nature to spread through the site and in between the clusters. The green environment is an important factor in creating the identity of the community, this is where the settlers of The Living Community find their common interest, where they grow the dreams of a new tomorrow.

In continuing the creation of the framework for an inclusive and diverse neighbourhood, each cluster consists of dwellings of respectively 60, 80 and 109 sq. m. to oblige the need for different settlers; single, couples and families, young and elderly. In addition, each cluster also comprises an outdoor square and a common house that together forms possibilities for a variety of different interactions between the neighbours.

The three common houses together form a common square, a center for the community, a more public space that with a path connects to an amphitheatre that allows for both community and public gatherings and events. The path leads through the agricultural fields and past a hen house as well as a greenhouse that creates the possibility to produce and harvest vegetables all year long. The fields grow into more dense vegetation consisting of fruit trees and bushes with berries and marks the end of the northern part of the community.

As a contrast the southern part of the site is more open and wild, here space is made for tiny houses. They are placed in the periphery to enhance the feeling of being close to nature and of the grid. The community is connected by bigger and smaller pathways that allow for people to move around and through the site by foot or by bike. The community is more or less car-free as the parking spaces are scattered along the public road and the road with-in functions as a fire access road. This allows for a safe and slower paced space where kids can run around and enjoy life.

Circular community



Different housing units ensure a diverse community and oblige the need of different settlers during all stages of life. An elderly that has become single is able to move to a smaller housing unit and a couple that becomes partners can move to a bigger one. The different housing units make it possible for people to stay in the same community even though life changes.

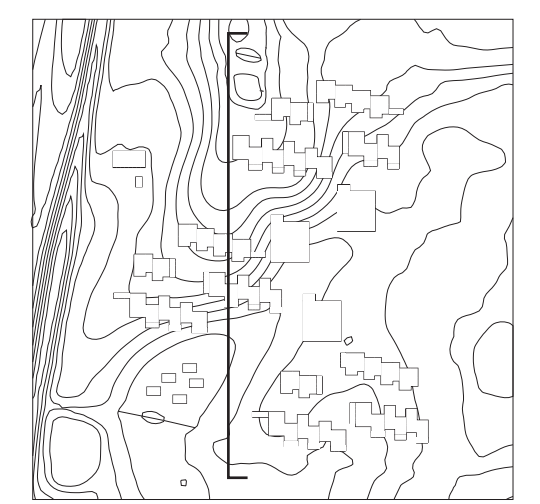
Cluster isometric

Every type of dwelling is represented in each cluster to obtain diversity. Each cluster consists of four 109 sq. m dwellings, four dwellings of approximately 80 sq. m, two in two stories and two in one story and four 60 sq. m. dwellings where one is suitable for wheelchair users. Hereby both young and old can gather, meet and profit from each other.

The dwellings of the clusters are gathered in rows pushed back and forth to create private outdoor spaces for every dwelling. The pushed back entrance spaces create a semi-private feeling and here the settlers can inhabit and create their own environment. The placement of the dwellings creates a variety of spaces and atmospheres in the cluster, as bigger and smaller distances between the dwellings, are created. In the centre of the cluster, a common square is created. Here the cluster can gather for informal events and children can play together. Bicycle sheds and play areas for the children define smaller rooms for the settlers to gather within the clusters. The bike sheds are placed inside the cluster in close connection to the dwellings to encourage travelling by bike instead of a car.

Community section

The section illustrates how the topography changes throughout the site and shapes the amphitheatre in the northern part of the site. Moreover, the connection and spatial contrast within and between the clusters is visible, as the dwellings in each cluster create a small-scale space between them for the neighbours to gather, which leaves room for open areas on the other side for nature to grow. This principle ensures that every dwelling has a strong visual connection to the surrounding nature.



Community section. 1:200

Public fields

The agricultural fields are placed near the dwellings starting from the common houses ending in the northern part of the site. The common greenhouse placed beside the fields creates another environment for vegetables to grow. The fields are maintained by the settlers and the produced vegetables are used for common dinners in the common houses.

