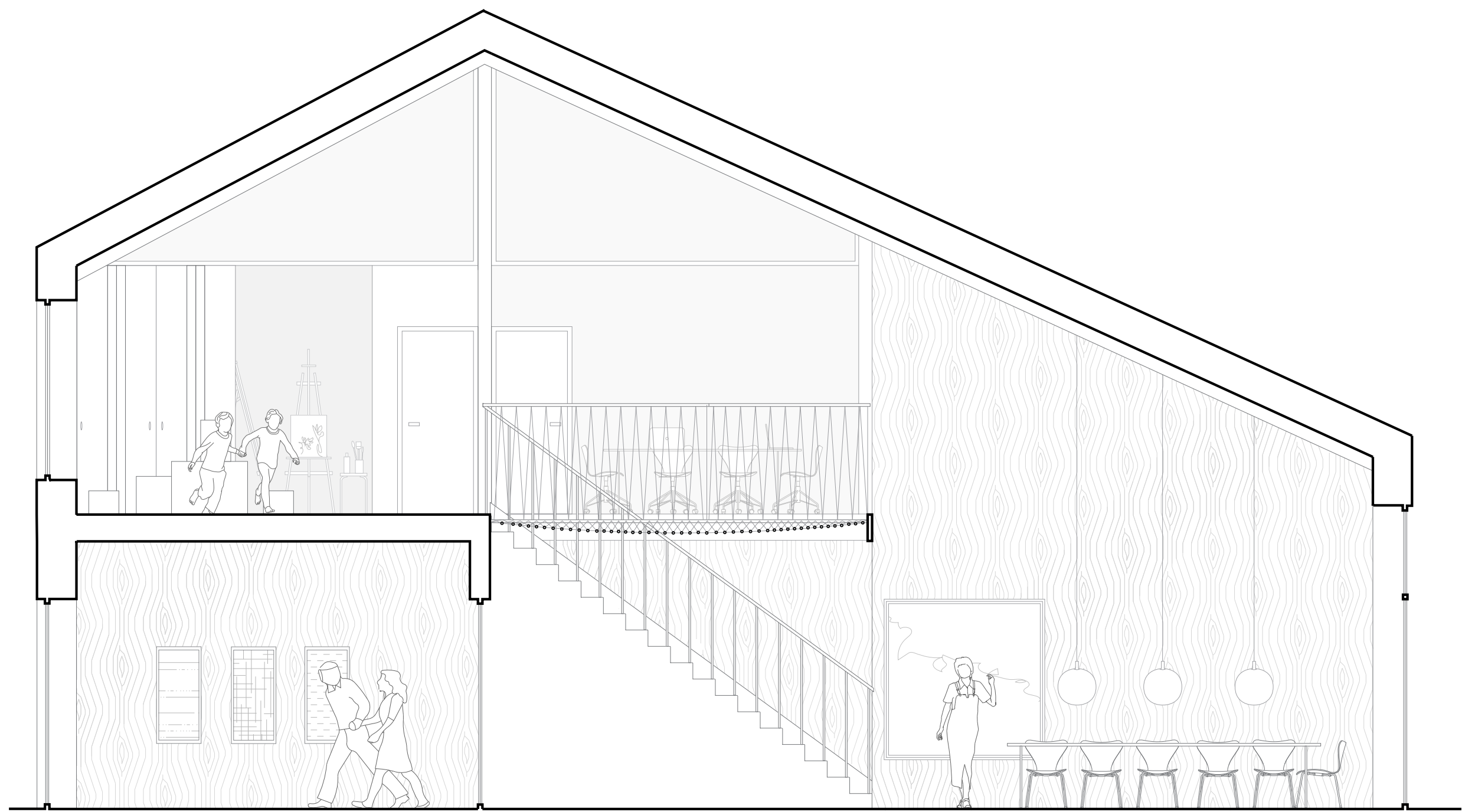


Common House. Groundfloor plan. 1:100

- 1 Cafe / Dining area: 71 m²
- 2 Staircase: 25 m²
- 3 Closet: 6 m²
- 4 Toilet: 3 m²
- 5 Handicap toilet: 5 m²
- 6 Technic room: 4 m²
- 7 Cleaning / Laundry: 11 m²
- 8 Kitchen: 17 m²
- 9 General kitchen: 8 m²
- 10 Product delivery: 7 m²
- 11 Freezer: 4 m²
- 12 Cooler: 4 m²
- 13 Pantry: 4 m²
- 14 Laundry drying area.

Common House. First floor plan. 1:100

- 15 Playground / free zone: 24 m²
- 16 Playing net: 11 m²
- 17 Niche / Lounge: 8 m²
- 18 Workshop: 14 m²
- 19 Workshop: 17 m²
- 20 Office: 11 m²
- 21 Archive / self service: 9 m²
- 22 Corridor: 4 m²
- 23 Toilet: 3 m²
- 24 Toilet: 3 m²

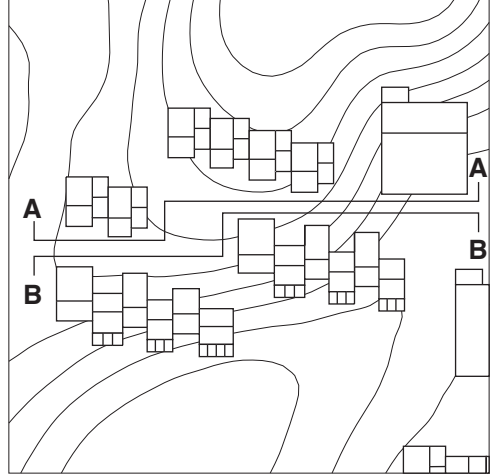


Common House. Section. 1:50

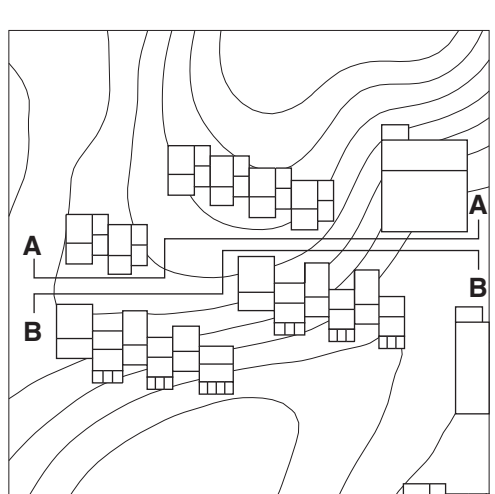
Common house

Several entrances allow for a functional flow between the clusters and the common functions in the common house. The south-facing dining area with space for approximately 40 people is placed in connection with the kitchen, and the double high room creates a connection between the two floors. The kitchen contains all required functions; storage rooms with varying temperature zones and a scullery for goods from the fields. The common house also contains a common laundry room with washing machines and tumble dryers in connection

with a covered outdoor space for drying cloth. The two floors are connected with centrally placed stairs with a slide for children and childish grown-ups. A playing net is spread across the staircase, a biophilic design principle that introduces risk, in connection with a free zone that can be utilized for a playground or used as a space for yoga or any other activity. Three rooms can be utilized for workshops and creative space or for office rooms and as they are equipped with sliding walls, it provides flexibility to increase the size of the rooms.



Cluster facade. Elevation South. AA. 1:100



Cluster facade. Elevation North. BB. 1:100

Cluster section

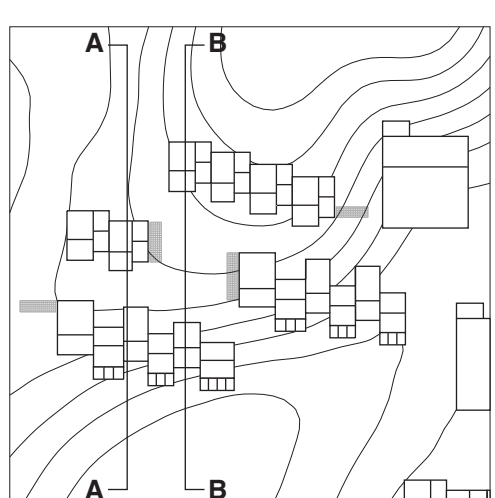
The differences in size of the space between the dwellings encourage different social interaction. The more narrow streets encourage informal meetings as well as nice private spaces outside the dwellings. The common square in the middle of the cluster creates an open space where everyone will meet and gather.

The dwellings towards the north in two and three storeys have a semi-covered terrace towards the cluster where it is possible to enjoy the southern sun in the summer. The terraces are partly shielded by a fence, to ensure the privacy of the settlers while still being in contact with the community. The southern placed dwellings have a private terrace overlooking the fields towards the south.

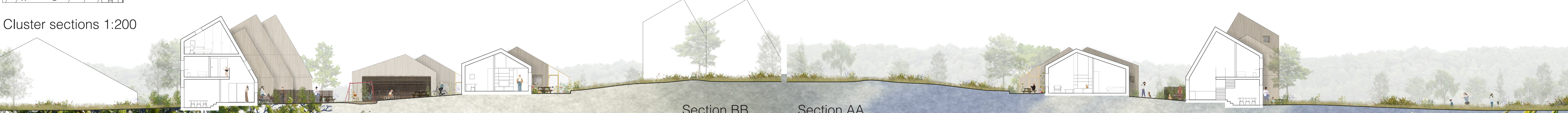
Cluster facades

The diverse shape of the dwellings creates a dynamic space between them. In the entrance, the wood cladding is turned horizontal to mark it and the settlers can personalize the expression of their dwelling by choosing the colour of the front door themselves. Windows are placed carefully in the facades of the dwellings to ensure privacy and daylight.

The outer expression and shape of the common house blend in with the dwellings in the community. The south-facing glazed doors create a gentle transition between inside and outside.



Cluster sections 1:200



Cluster section

The Common Square is the heart of *The Living Community*. When entering *The Living Community* through the Common square the experience starts. The area is big enough to gather the whole community and visitors. This is where you meet residents from the other clusters and maybe outside visitors, which makes this the most public area in the community. The Common Square connects the shared functions, for example, the agricultural fields and the amphitheatre, to the three clusters.

