

Floor plans 109 and 80 sq. m

The 109 sq. m dwelling is created to fit any kind of family.

The dwelling is divided into three stories and entered from the south. In the entrance, there is an integrated closet for storage of coats and shoes. The kitchen is towards the south with a door and a big window facing the outdoor terrace creating a close connection to the cluster. The kitchen is placed in a double high room, connecting the first-floor to the rest of the dwelling. This makes the different floors of the dwelling seem closer connected and it is possible to obtain a visual and vocal connection. The dining area and living room is placed three steps down towards the north with a view to the open fields. On the second-floor two kids' rooms and a bathroom is placed. By placing the kids' room on the second-floor their daily plays become a part of the common areas and parents and children will have a higher level of coherence during the day. The third-floor is intended as the parents' section of the dwelling. The eastern wall is utilized for closets and a small working table making it possible to work focused from home without interruptions. An east-facing window allows for the morning sun in the bedroom, and the settlers can watch the sky from the bed through a skylight in the roof.

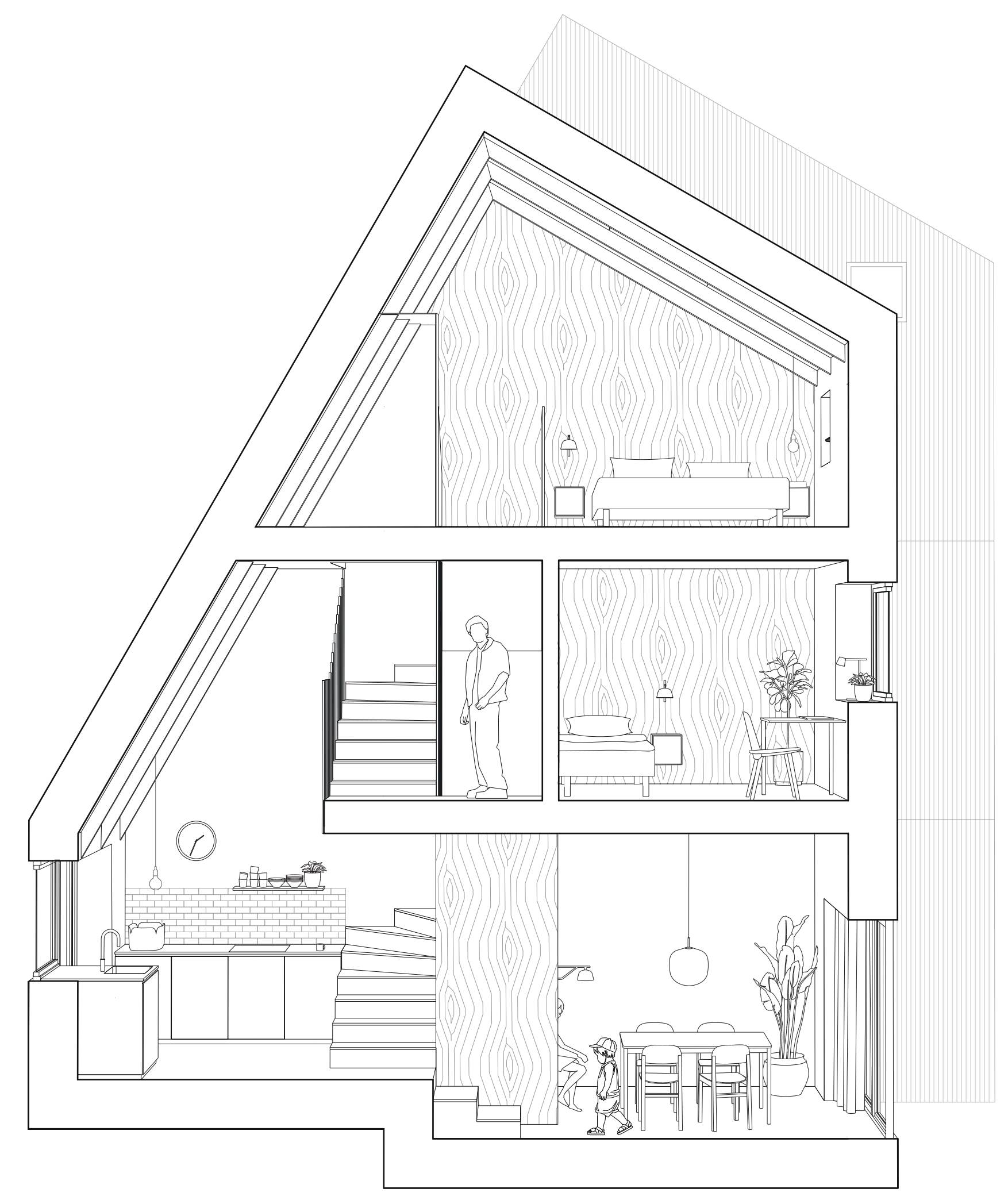
The 80 sq. m dwelling is created to fit the couple who needs a bit more space or the couple with one child.

The dwelling is created with the same principles as the 109 sq. m dwelling but in two floors.

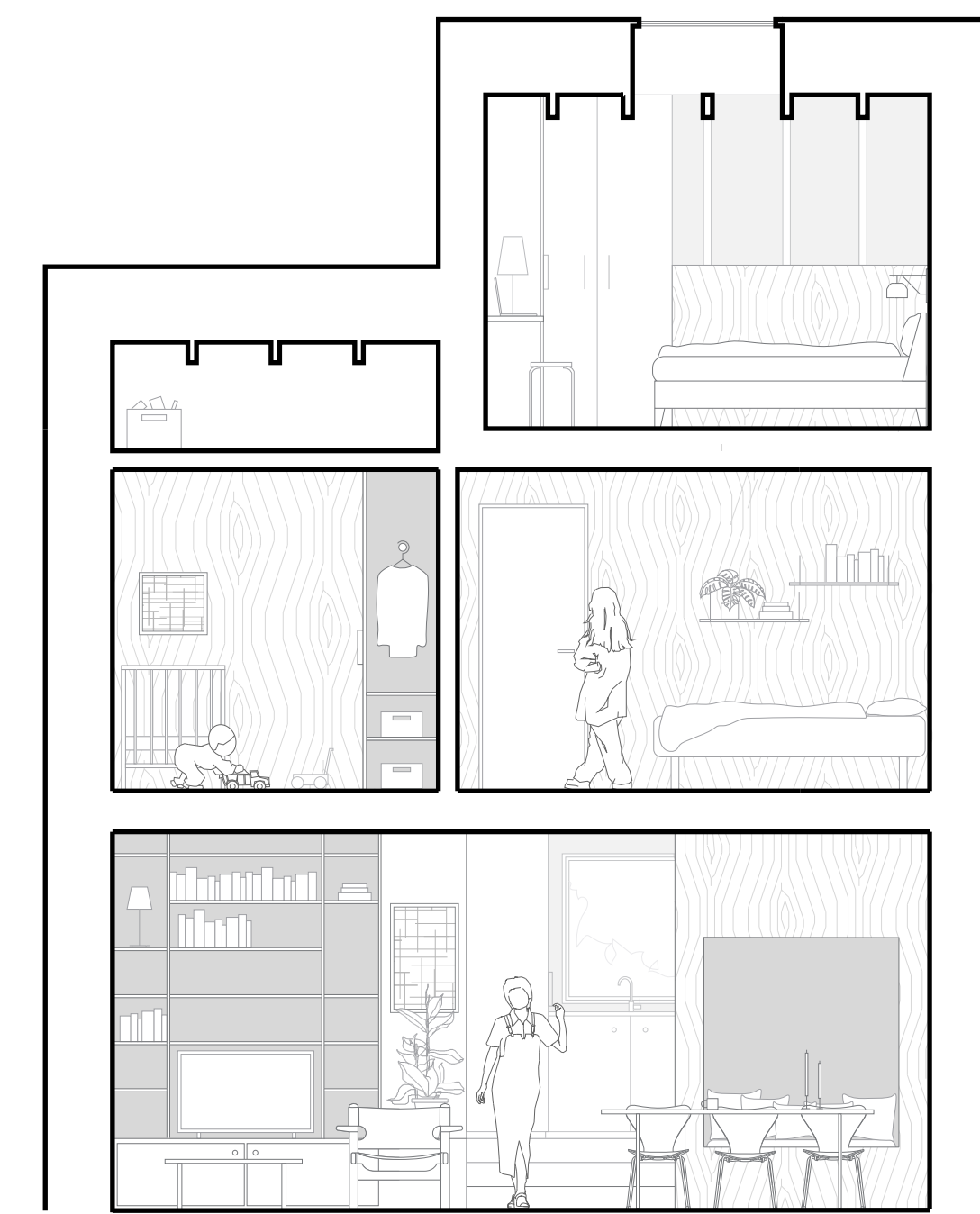
Sections 109 sq. m

The southern roof carefully executed to harvest energy from the sun gives the dwelling an unic identity. The interior space is influenced by the roof and it creates a double-height room connecting two stories in the dwelling. On the ground floor three steps divide the kitchen and the dining area which enhances the different atmospheres of the spaces.

On the ground floor a built in bookcase creates a cosy corner for watching TV and gathering with the family. The other corner of the living room contains a dining area with a built in niche under the staircase. On the second floor two rooms are placed, one with a loft above to utilise the space underneath the ceiling.



Section AA. 109 sq. m unit. 1:50



Section BB. 109 sq. m unit. 1:50

Floor plans 109 sq. m

1 Living room/dining:	22,6 m ²
2 Kitchen:	12,2 m ²
3 Entrance:	3 m ²
4 Toilet:	2,2 m ²
5 Bathroom:	5,2 m ²
6 Landing:	3 m ²
7 Room 1:	10,2 m ²
8 Room 2:	8,7 m ²
9 Bedroom:	12 m ²

Floor plans 80 sq. m

	20,5 m ²
	10
	3 m ²
	2,2 m ²
	5,2 m ²
	3 m ²
	7,7 m ²
	8 m ²
	-

