

Preparing tuti for tomorrow

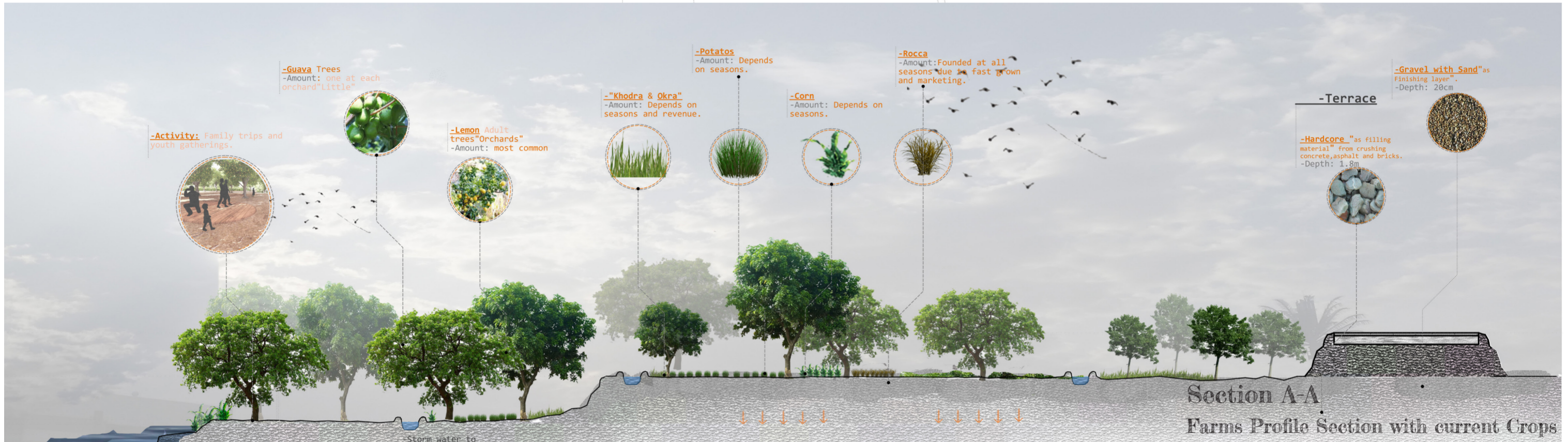
with

# Tuti Farms Revival



## Project Notions:

- 1-The site represents the visual connection between both tuti and omdurman.
- 2-Potential of distribution of entertainment area throughout Tuti.
- 3-White Nile's slow current may allow river taxi station and sailing club instead than the one that demolished because of erosion on the eastern side.
- 4-This area is considered as the green eye of tuti island with potentials to become landmark due to the strategic location and having the sunut project under construction right across the river.
- 5-As most owners of that agricultural farms either leave it with no care or invest in other purpose.



**1. farms / streams remaining**  
productive farms and irrigation system are kept the same and integrated with the design.



**2. maintain a clean natural environment**  
no cars are allowed on site to support the concept of walkability. there is point for renting bikes or cabriolets for non walkers.



**3. income enrichment**  
Farm markets and animal sheds where all farmers products can be sold.



**4. Glass houses**  
helps in growing plants year around.



**5. Botanical garden**  
to develop plant collections for display, education, research and enjoyment.



**6. tuti for tutians**  
facilities like the social club and the hall are reserved for tutians in respect of their close society.

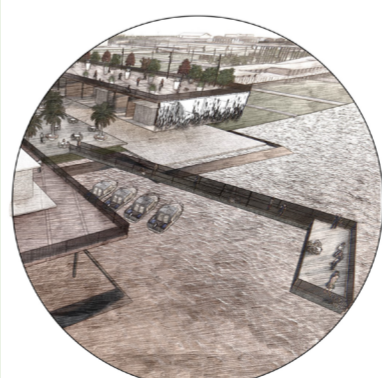
**7. Bring Night Activities**  
restaurants, chalets, playgrounds, multi purpose hall, tutians club are all facilities that can be used at night.



**8. a place for different age groups**  
special playgrounds and places for children, youth, old people and all family members.

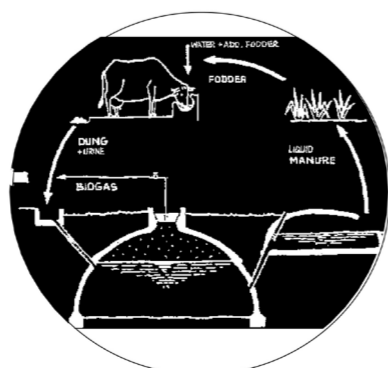


**9. Plaza**  
a gathering point where people can do different activities and events.

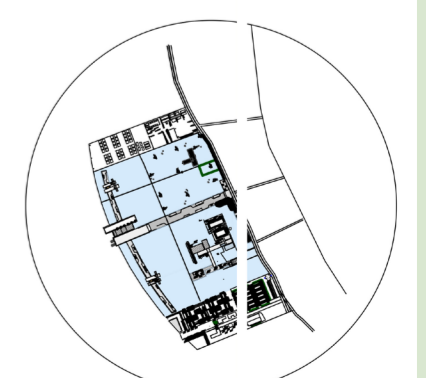


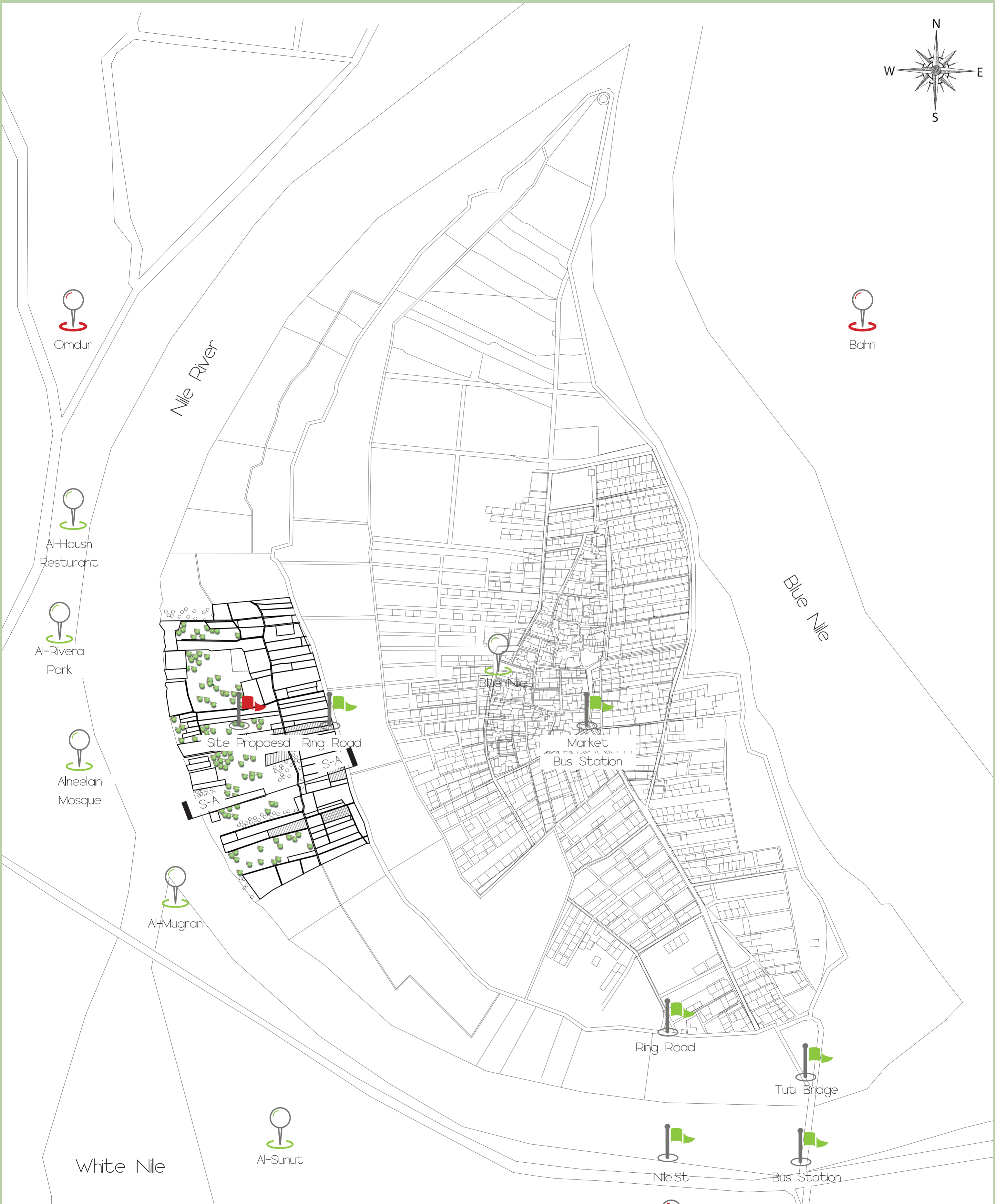
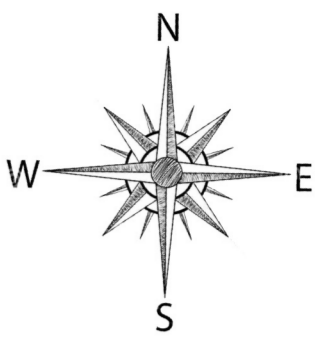
**10. water taxi station and sailing club**  
a station to link tuti with Omdurman and also a club to practice rowing.

**11. Biogas station**  
animals dung can be used in energy production.



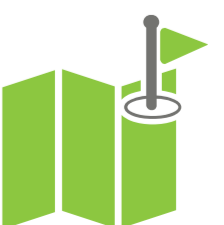
**12. Let water in**  
using retaining wall system and refilling built zones can let the water in the site in controlled way during flood season.

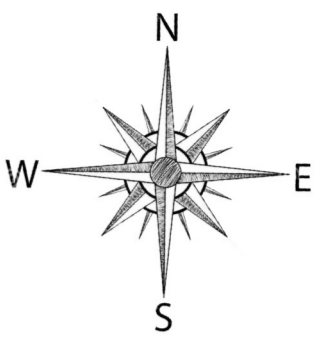




## Site Location And Analysis:

- Site Location: Africa, Sudan, Khartoum state, Tuti island - Nile river
- Project Area Proposed: 375000m<sup>2</sup>
- Accessibility through narrow ring road of 5 to 7m width-which is unpaved road to retain floods during fall
- Pathways within the site could only be through feet or carriages
- No water supply or electricity within the site

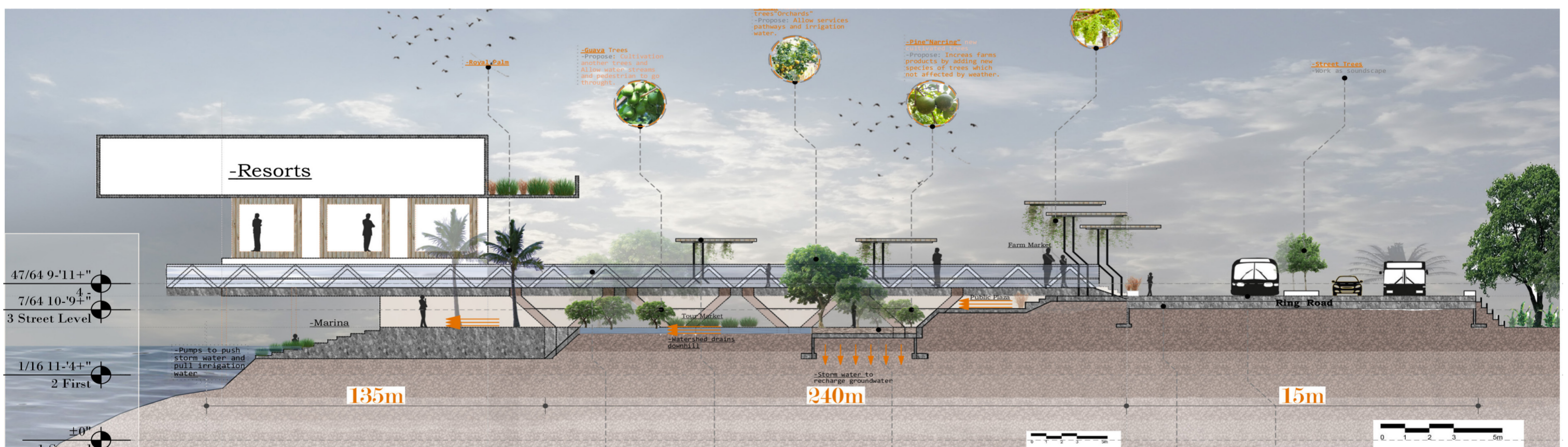




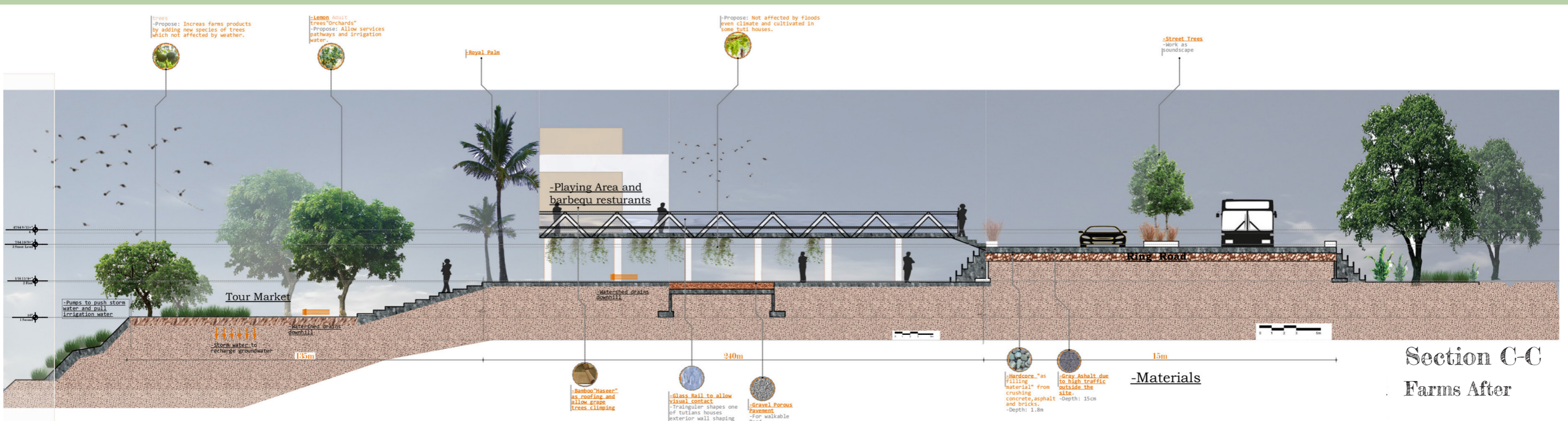
- 1-Social Club
- 2-Outdoor Parking Lots
- 3-Resorts
- 4-Playgrounds
- 5-Farm Market
- 6-Plaza
- 7-Chalets
- 8-Service Areas
- 9-Biogas Station
- 10-Animals Barns

## Master Plan

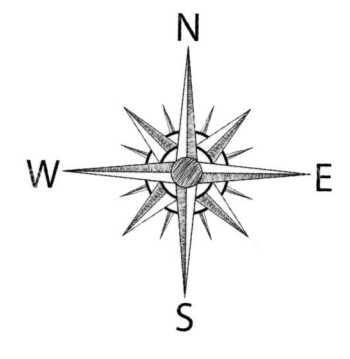
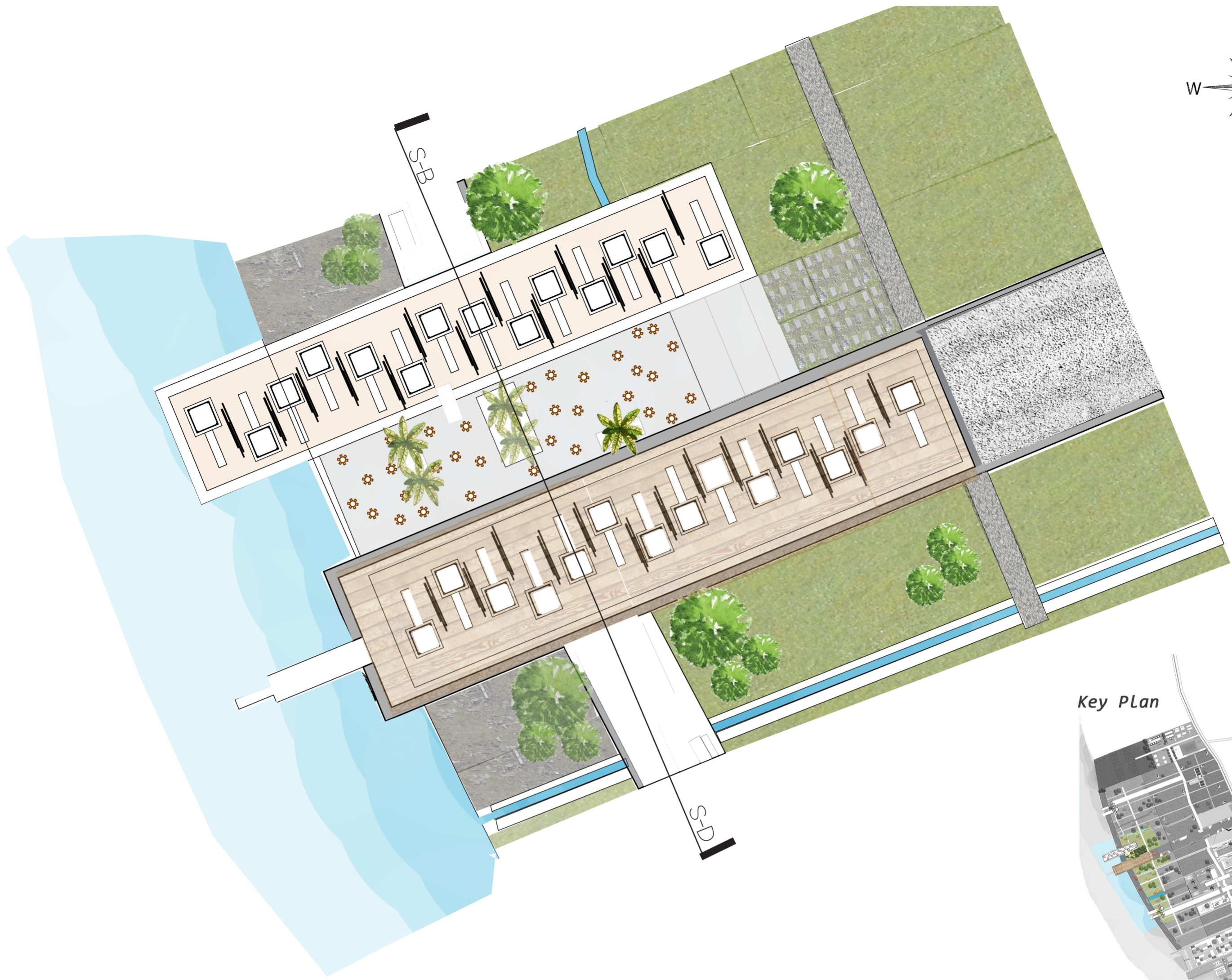
Farms with proposed activities and facilities



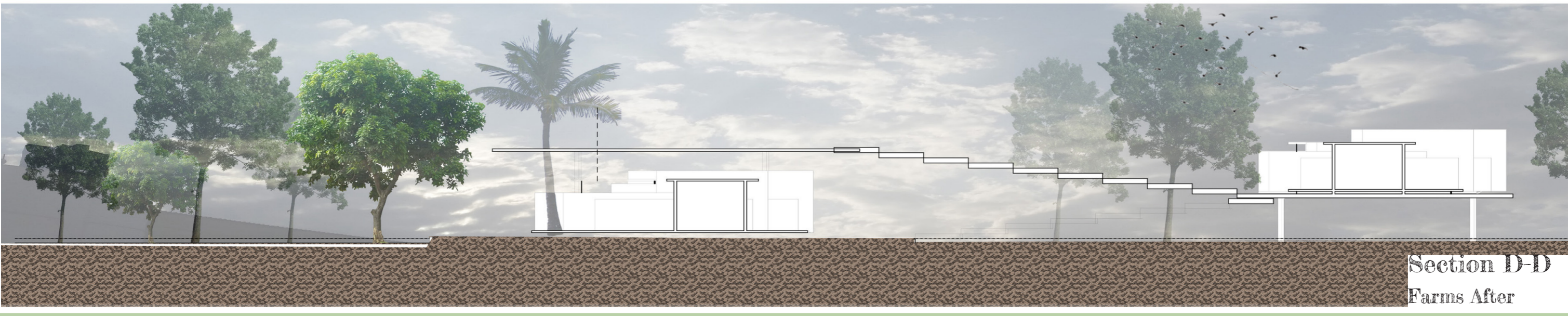
- Materials Section B-B Farms After**
- Glass Ball to allow visual contact
- Bamboo "Master" as roofing and allow escape trees climbing
- Gravel Porous Pavement for walkable road
- Hardcore "as filling material" from crushing concrete, asphalt and bricks. -Depth: 1.8m
- Grey Asphalt due to high traffic outside the site. -Depth: 15cm



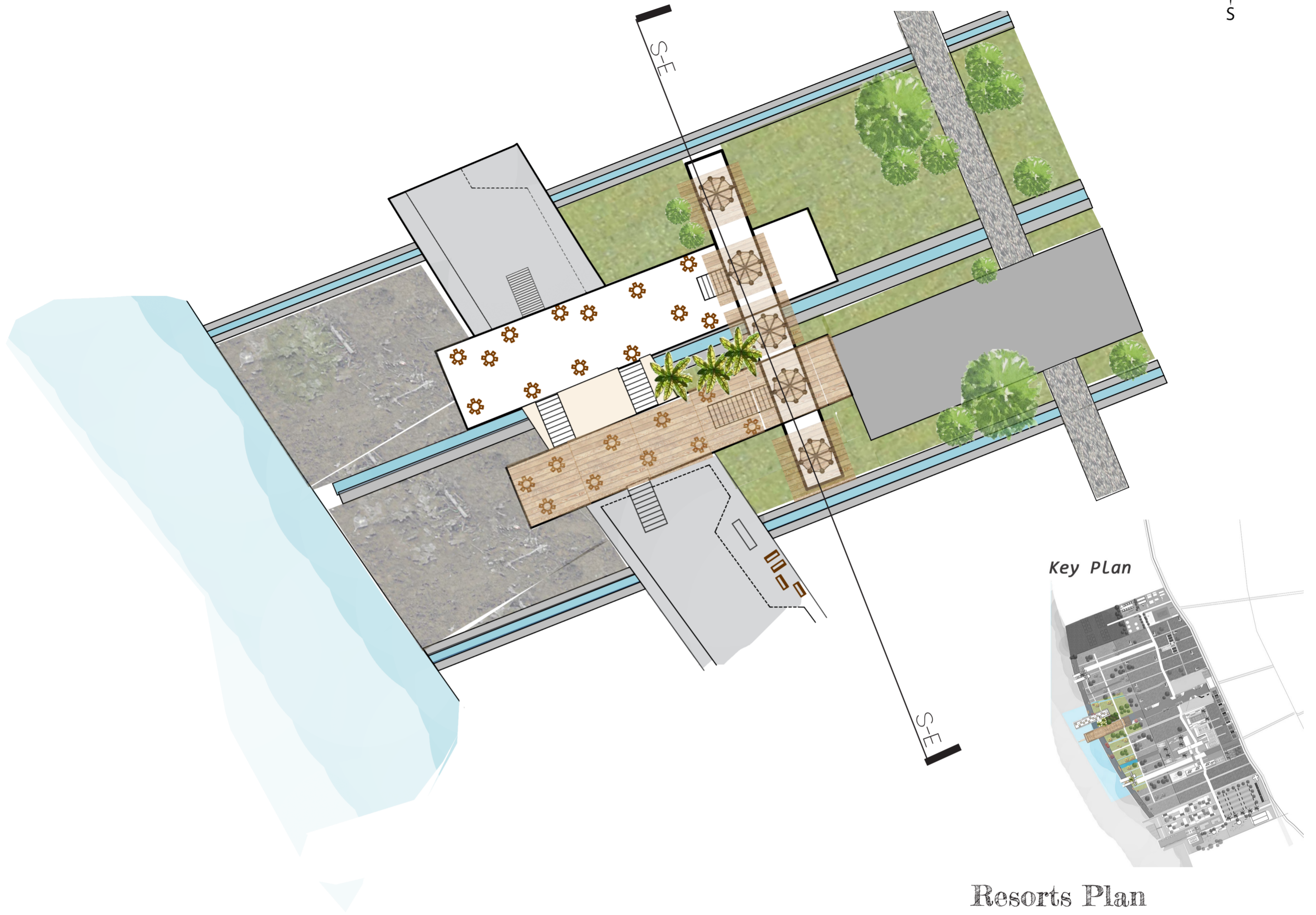
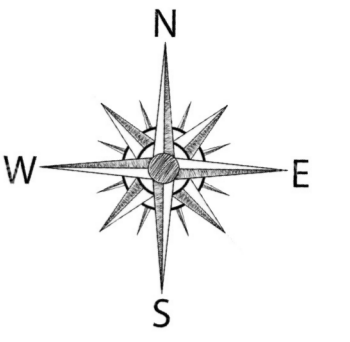
- Materials Section C-C Farms After**
- Bamboo "Master" as roofing and allow escape trees climbing
- Glass Ball to allow visual contact
- Gravel Porous Pavement for walkable road
- Hardcore "as filling material" from crushing concrete, asphalt and bricks. -Depth: 1.8m
- Grey Asphalt due to high traffic outside the site. -Depth: 15cm



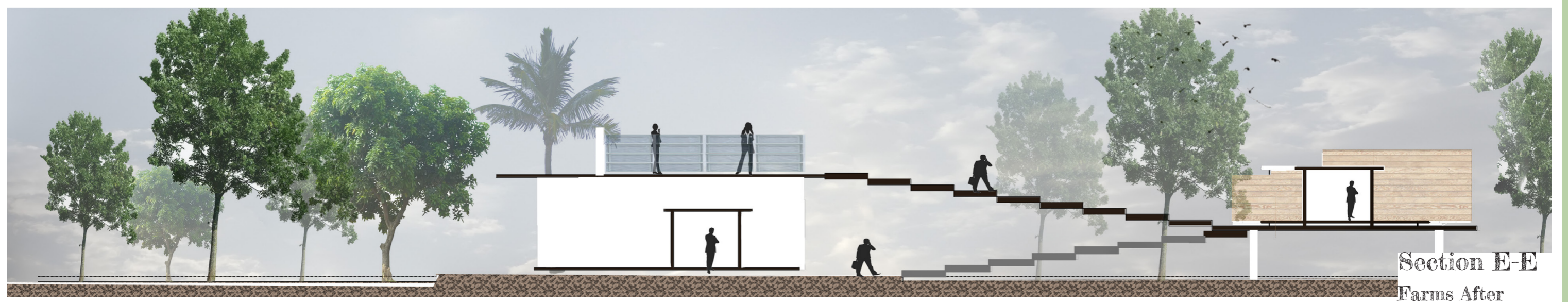
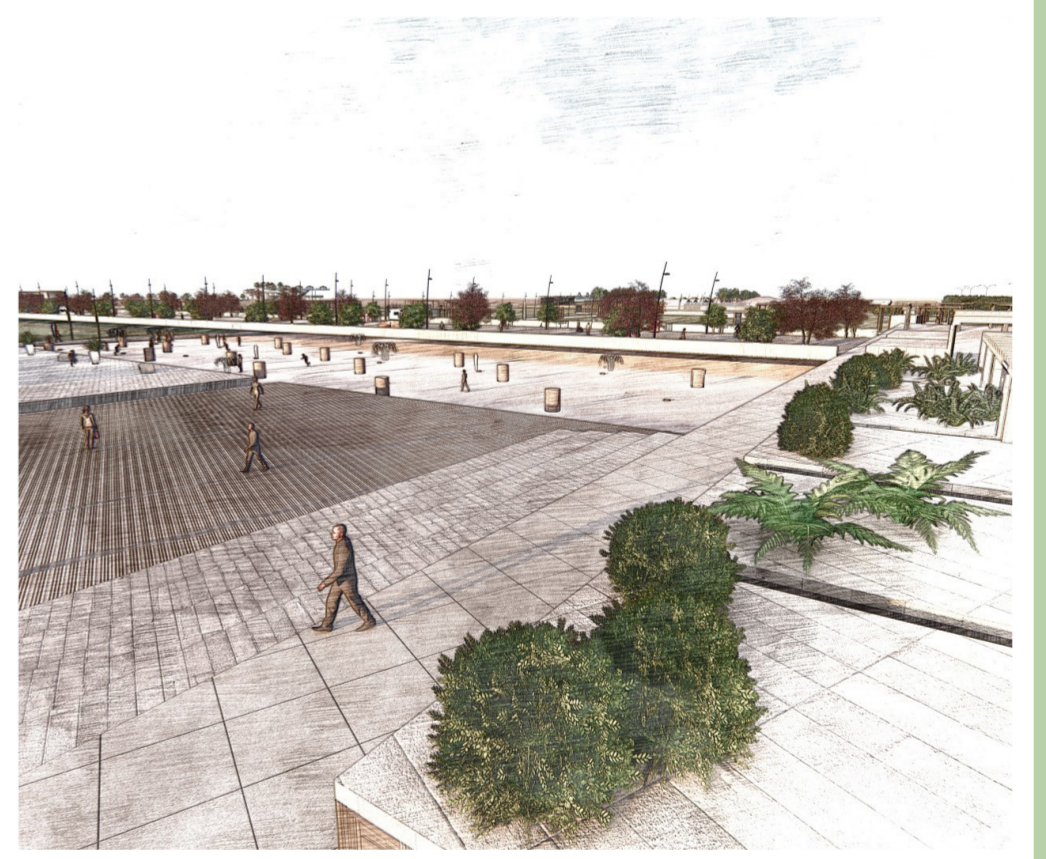
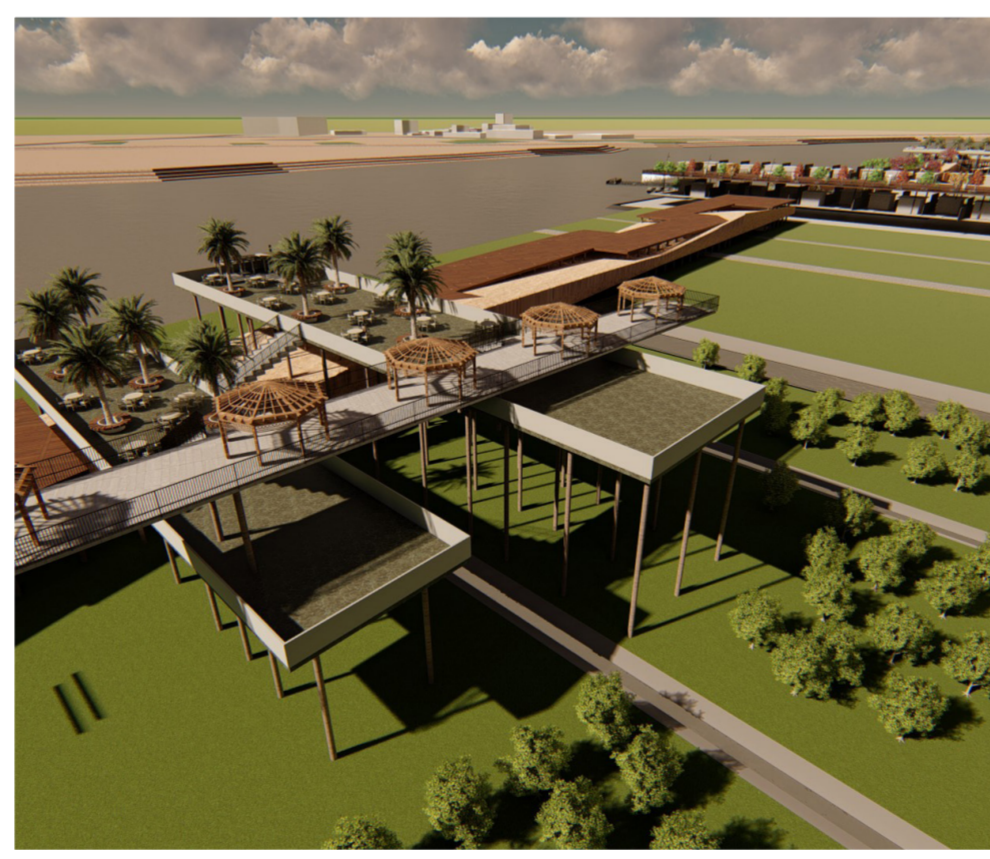
**Chalets Plan**  
 Located at the end of the raised road "Bridge"

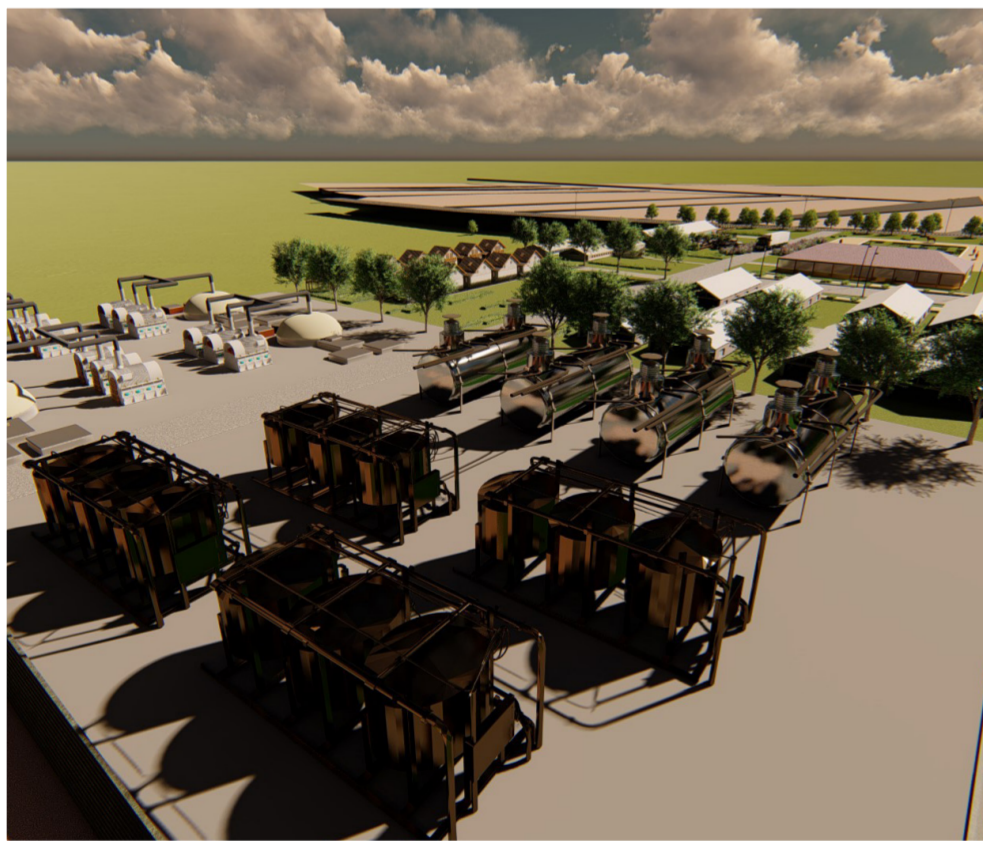
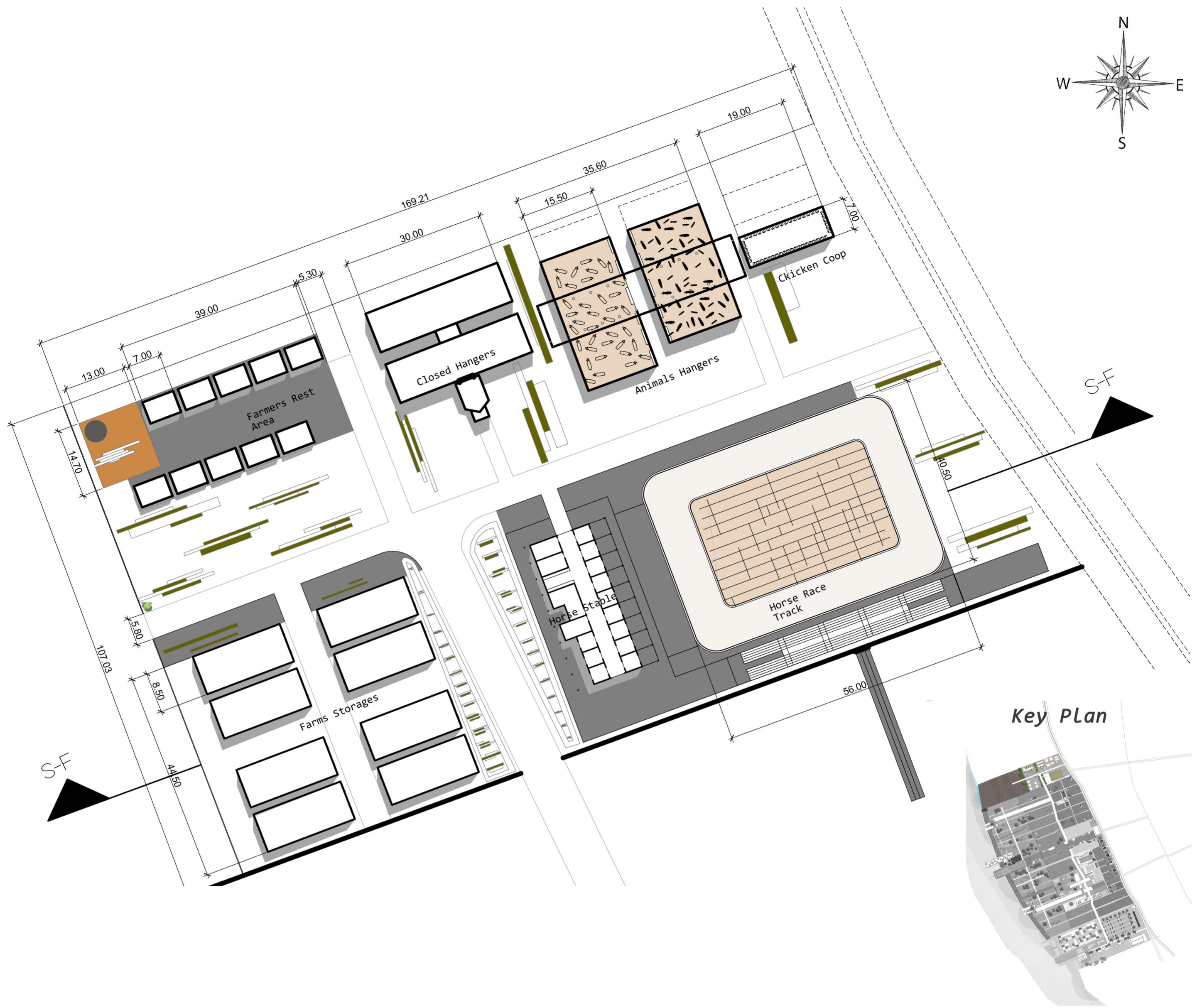
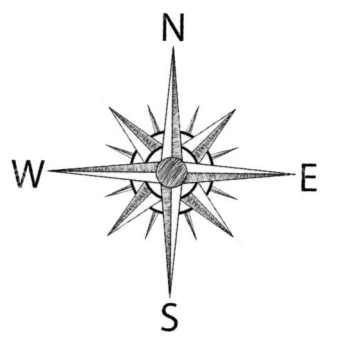


**Section D-D**  
 Farms After

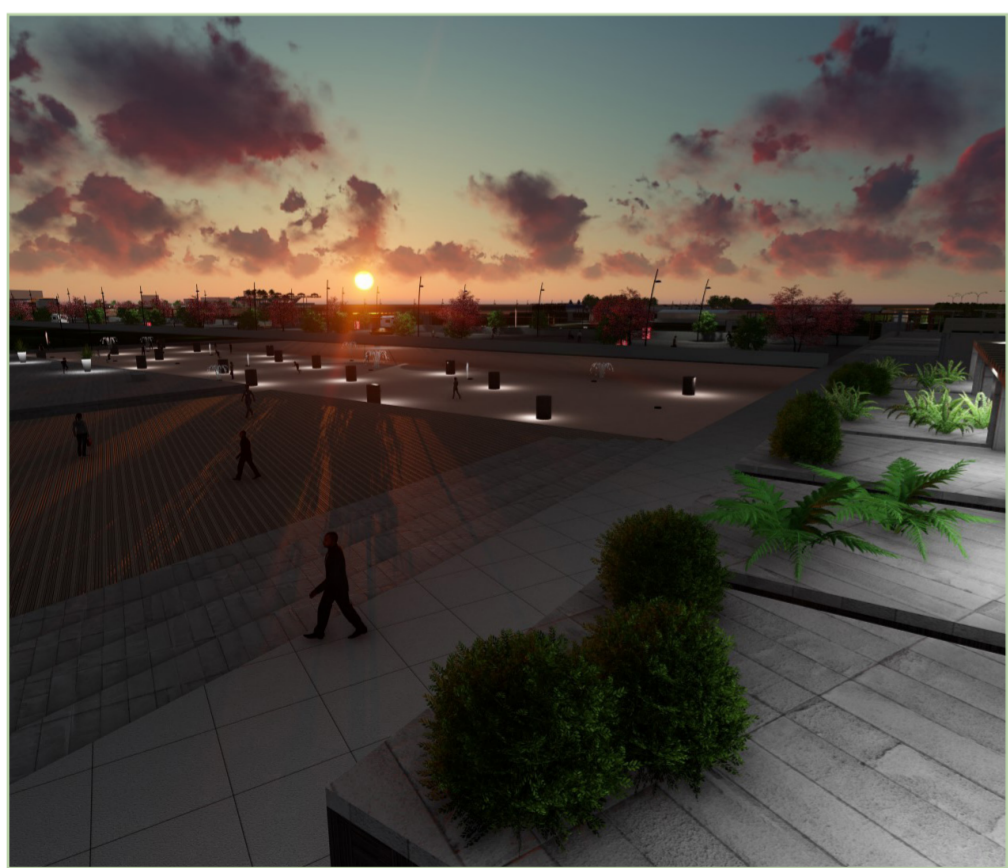


**Resorts Plan**  
Located randomly among farms  
and botanical gardens





Section F-F  
Services Area After

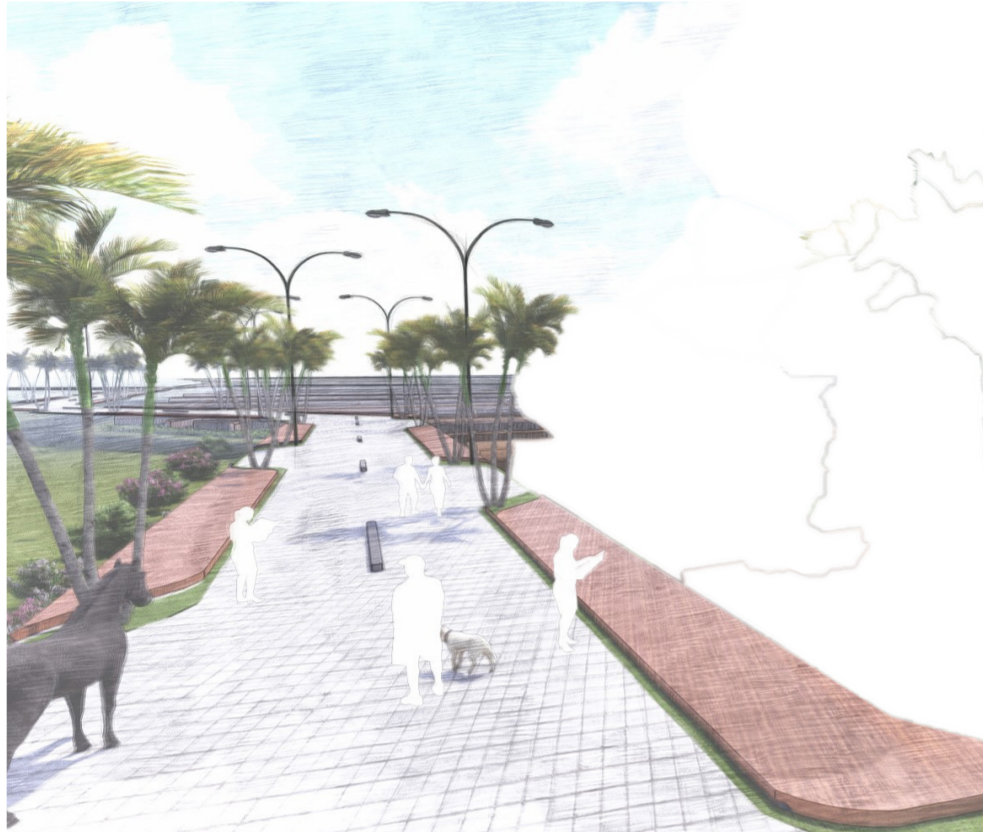


# Tuti Roads Design

Our concept was based on roads redefined by adding different activities and elevating some of the spontaneous streets to avoid flooding and provide visual connectivity

## -Main Pedestarian Road :-

- Paving Material : Cement Sand Interlock
- Width : 9meters with dropoffs and seats
- Access : Bicycles, Pedestrian pathways, carriages
- Furniture: Lights , Green beds, Trees'Royal palm'
- Activities: Cafes, Bookshops



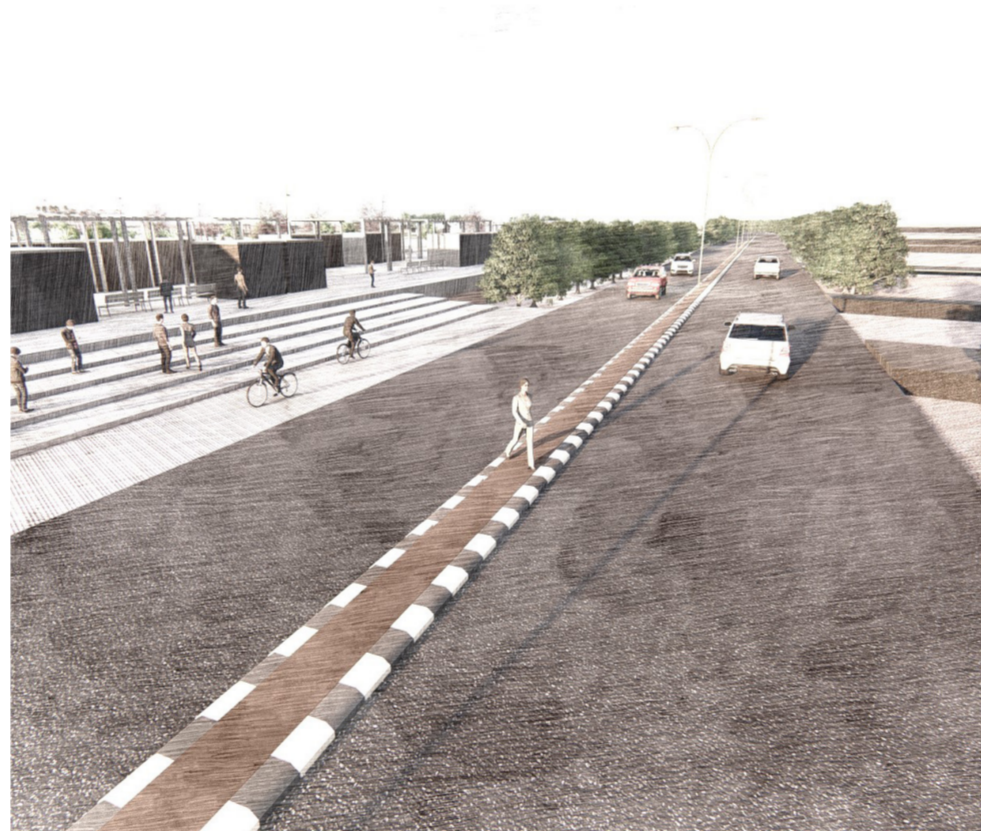
## -Main Pedestarian Road :-

- Paving Material : Cement Sand Interlock
- Width : 9meters with dropoffs and seats
- Access : Bicycles, Pedestrian pathways, carriages
- Furniture: Lights , Green beds, Trees'Royal palm'
- Activities: Cafes, Bookshops



## -Main Pedestarian Road :-

- Paving Material : Cement Sand Interlock
- Width : 9meters with dropoffs and seats
- Access : Bicycles, Pedestrian pathways, carriages
- Furniture: Lights , Green beds, Trees'Royal palm'
- Activities: Cafes, Bookshops



UNIVERSITY OF KHARTOUM  
FACULTY OF ARCHITECTURE  
FOURTH YEAR

URBAN DESIGN  
DEVELOPED STAGE

WATER FRONT AREA  
GROUP-9

Concept: Farms Revival



Group Members:

- Anfal Abuther
- Alaa bdalaziz
- Eman Ibrahim Ahmed
- Reemaz Hassan
- Sara Abdalrahman
- Fatima Abdalmoneim
- Sarya Al-Fatih
- Waad Alaa