

PROCESS DIAGRAM (HOUSE)

IN ADDITION TO THE DIFFERENT STATISTICS OF CASUALTIES AFTER THE ACCIDENT THAT WE FACE, WE MUST APPROACH THE STRATEGY OF DIVIDING THE SPACE BASED ON DEMAND AND NEED WITH A REALISTIC VIEW OF THE INJURIES.

TWO PLAN MODELS HAVE BEEN DESIGNED FOR THIS EVENT, WHICH HAVE BEEN DEFINED AS TWO SPACES FOR THE FAMILY BASED ON THE CASUALTIES AFTER THE EARTHQUAKE.

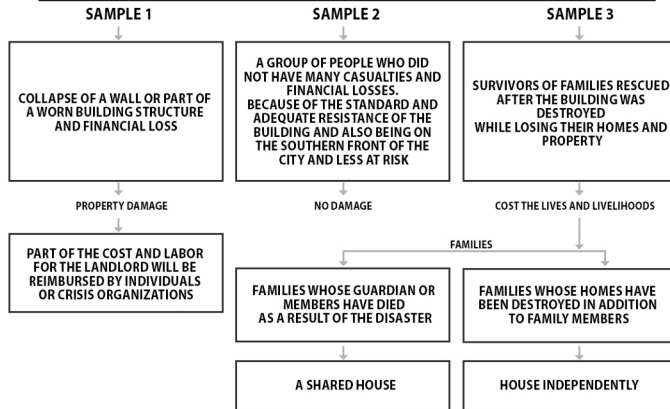
↓
OUR APPROACH TO THIS ISSUE IS TO PAY ATTENTION TO ALL THE ELEMENTS AND VOLUMES THAT EXIST ON THE SITE THAT CAN BE USED TO THE FULLEST WITH A NEW CONSISTENT IDEA THAT WILL ALSO IMPROVE THE WORK IN TERMS OF TIME.



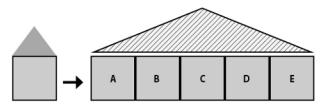
↓
DUE TO THE HIGH DEMAND FOR HOUSING AND SHELTER, IT IS NOT POSSIBLE TO CREATE A COMPLETE AND SEPARATE UNIT FOR EACH FAMILY FROM THE SITE AREA, SO IN ORDER TO SHELTER MORE PEOPLE, IT IS NECESSARY TO SHARE A NUMBER OF SPACES, WHICH THIS ISSUE CAN SOMEHOW PROVIDE COMMUNICATION AND INTERACTION BETWEEN HUMANS.

| PEOPLE |

DIVISION OF PEOPLE AFTER THE EARTHQUAKE

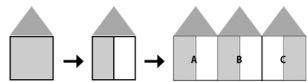


A-1 HOUSE:
SHARING MEANS A SET OF JOINT ACTIVITIES SUCH AS A WALKWAY AND KITCHEN AND THE PLACEMENT OF RESIDENTIAL ROOMS IN TWO PARTS UNDER A COMMON ROOF



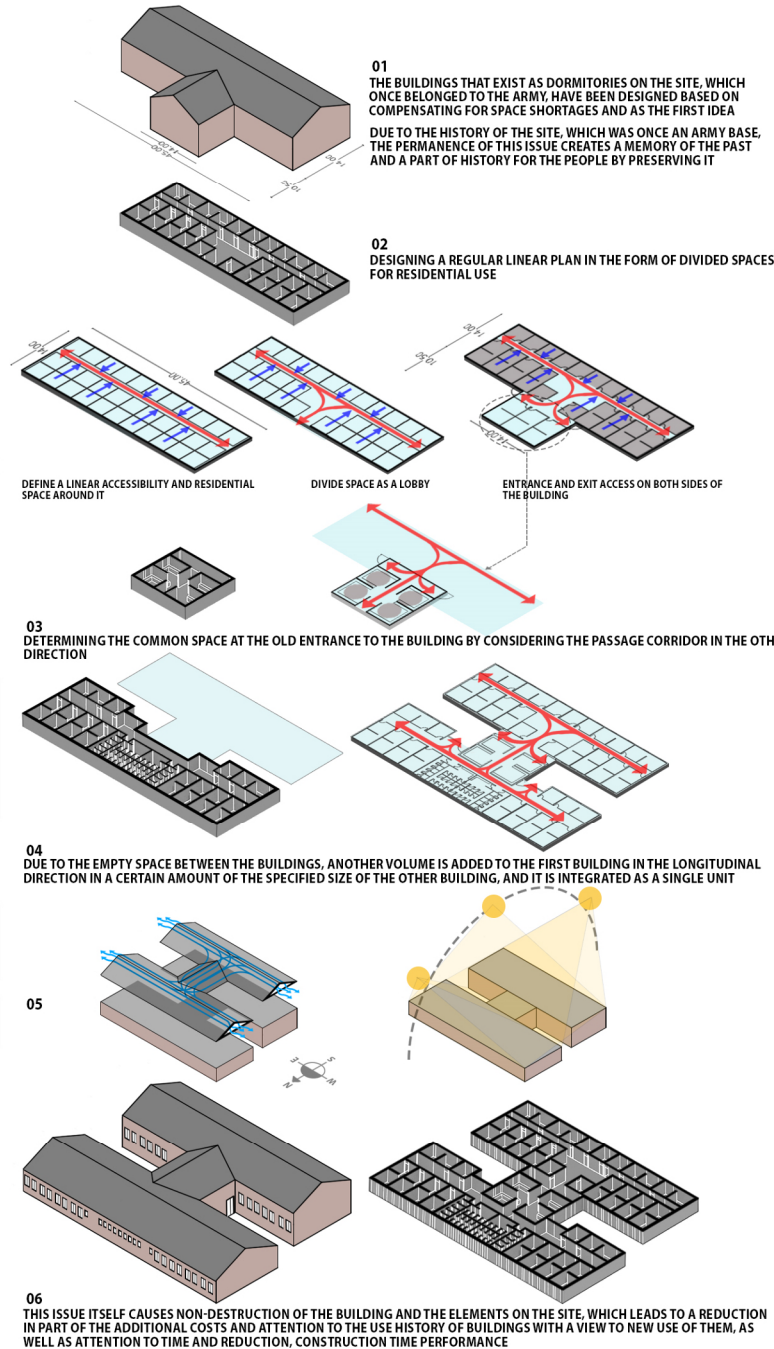
THE BUILDING THAT EXISTED IN THE SITE AND WE REDESIGN IT

A-2 HOUSE:
PLACEMENT OF A SET OF RESIDENTIAL ROOMS WITH SEPARATE CEILINGS AND THE DEFINITION OF INDEPENDENCE TO THE EXTENT OF CONTROL OVER THE SPACE, AS WELL AS THE PLACEMENT OF THIS COMPLEX TOGETHER AND THE FORMATION OF AN INDEPENDENT UNIT WITH A COMMON CENTRAL COURTYARD



THE BUILDING THAT WE BUILD AND DESIGN

A-1 HOUSE



A-2 HOUSE

