

Students Performance Criteria (SPCs for NAAB)

A2 DESIGN THINKING SKILLS

A4 TECHNICAL DOCUMENTATION

A5 INVESTIGATIVE SKILLS

A8 ORDERING SYSTEMS SKILLS
STRUCTURAL DESIGN

A9 HISTORICAL TRADITIONS AND GLOBAL CULTURE

B2 ACCESSIBILITY

B3 SUSTAINABILITY

B4 SITE DESIGN

B5 LIFE SAFETY

B8 ENVIRONMENTAL SYSTEMS

Conceptual Design Thinking Process

A5 Investigative Skills

Summary of the Observation and Analysis

Beirut a METROPOLITAN CITY is facing many problems nowadays affecting its socio-economic situation in many of its neighborhood.

We can easily note :

- The Gentrification Issue throughout the past 2 decades
- The huge **EXPLOSION** of the 4th of August 2020

Resulting as a start in

Displacing the residents and most importantly tenants from their flats

Empty Neighborhood

Working in Mar Mikhael = Tenants Staying in Mar Mikhael = *Back to Life*

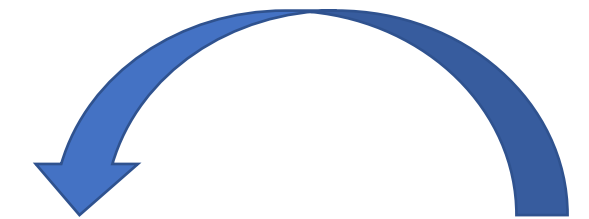
Economic intervention



positively affect the **Social Fabric**

Intervention is based on these **3 pillars**

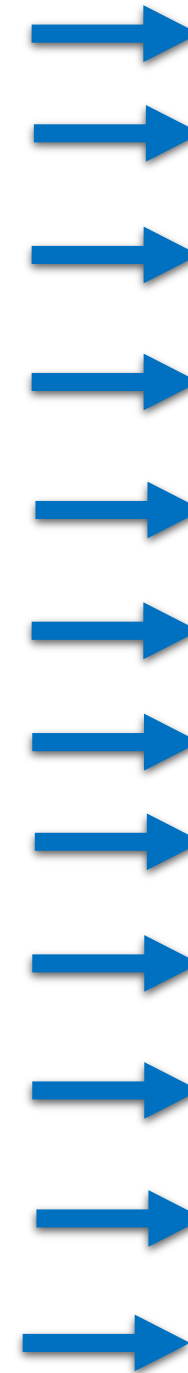
Inclusive engineering and Architectural workshops



ART- Entertainment



Commerce-
Economy



SO We'll be seeking **Resilience** through a **City Gate**

After Observing Mar Mikhael's borders, we notice the **importance of its Eastern entrance, as the Portal to the Great Beirut.**

This notice lead us to think of a **proposition helpful** for Mar Mikhael as well as to all of of Beirut.



The Site chose itself

Mapping

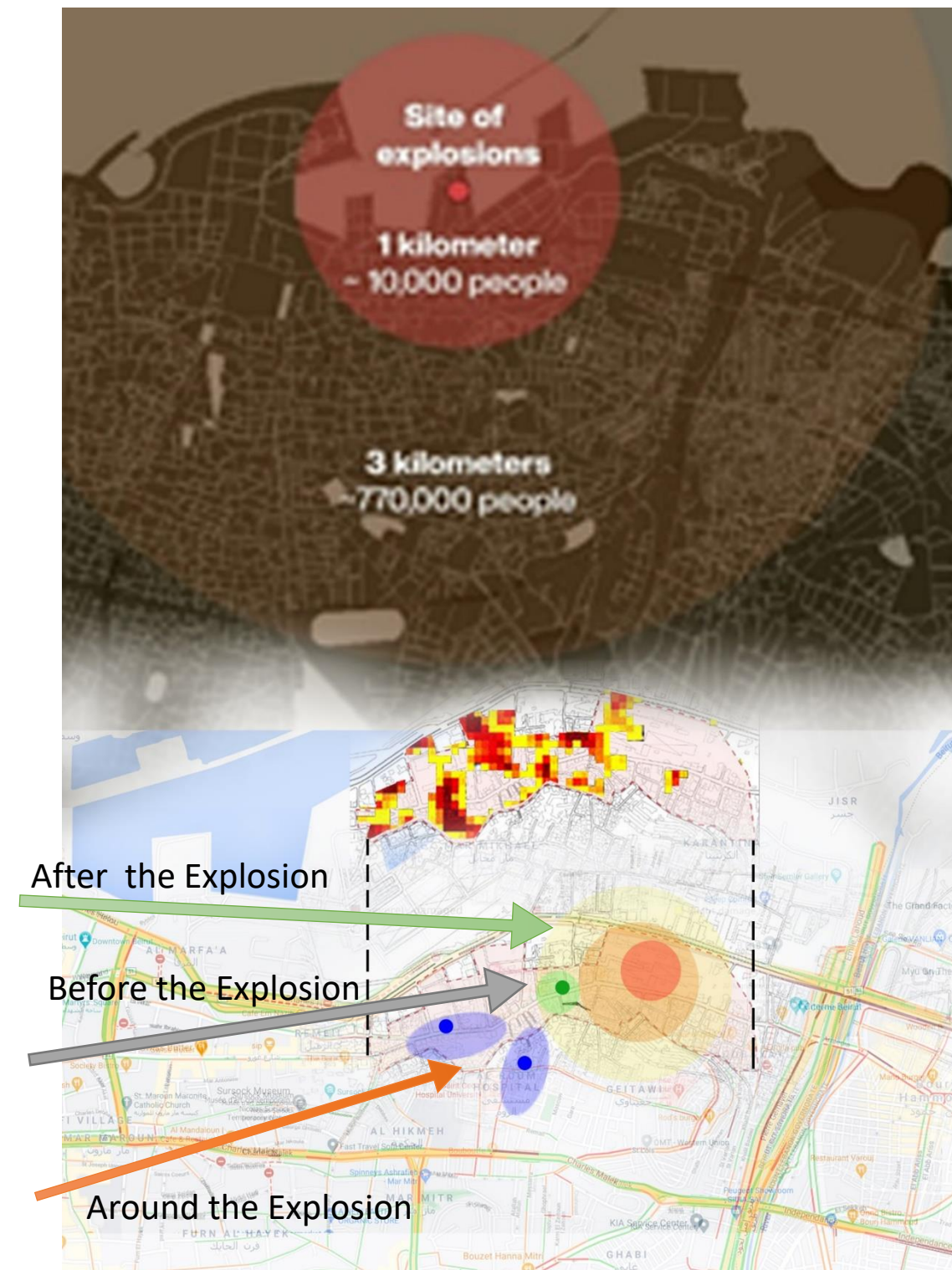
This Neighborhood has knew different types of **Activity Hubs** (Souk El Tayeb- Nation Station- NGO's tents)

Cycles of Recovery

The Explosion lead to the creation of two important **Mini Generators** with no specific timeframe but with a well thought of spatial implementation.

Our Proposition was inspired by these mechanisms , evolving organically (in space and time)

Precising a site, **we will be generating a super pole , an Urban Metropolitan Hub** that will be enduced by constant design, and observation



Program

Primary Functions 1550m²

SOUK 1550m²

1- a) Food:

- 5 Chicken Shops
- 5 Meat Shops
- 5 Spices Shops
- 5 Fruits & Vegetables Shops
- 5 Seeds Shops
- 5 Sea Food Shops
- 5 Dairy Products Shops

b) Arts and Crafts:

- 5 Soap Shops
 - 5 Provisions Shops
 - 1 Pottery Shop
 - 2 Clothing Shops
 - 1 Florist
 - Gallerie Mobilier
- #### 2- Workshops:
- 1 Soap Workshop
 - 1 Pottery Workshop
 - 1 Glass Workshop
 - 3 Clothing Workshops
 - 1 Painting Workshop
 - 1 Furniture Workshop

Secondary Functions 4125m²

3-Design

- **Salles séminaires**
 - 3 salles 200m²/1
 - 1 salle 100m²
- **Ateliers**
 - 1 Atelier 25m²
 - 1 Atelier 37.5m²
 - 1 Atelier 75m²
 - 1 Atelier 90m²

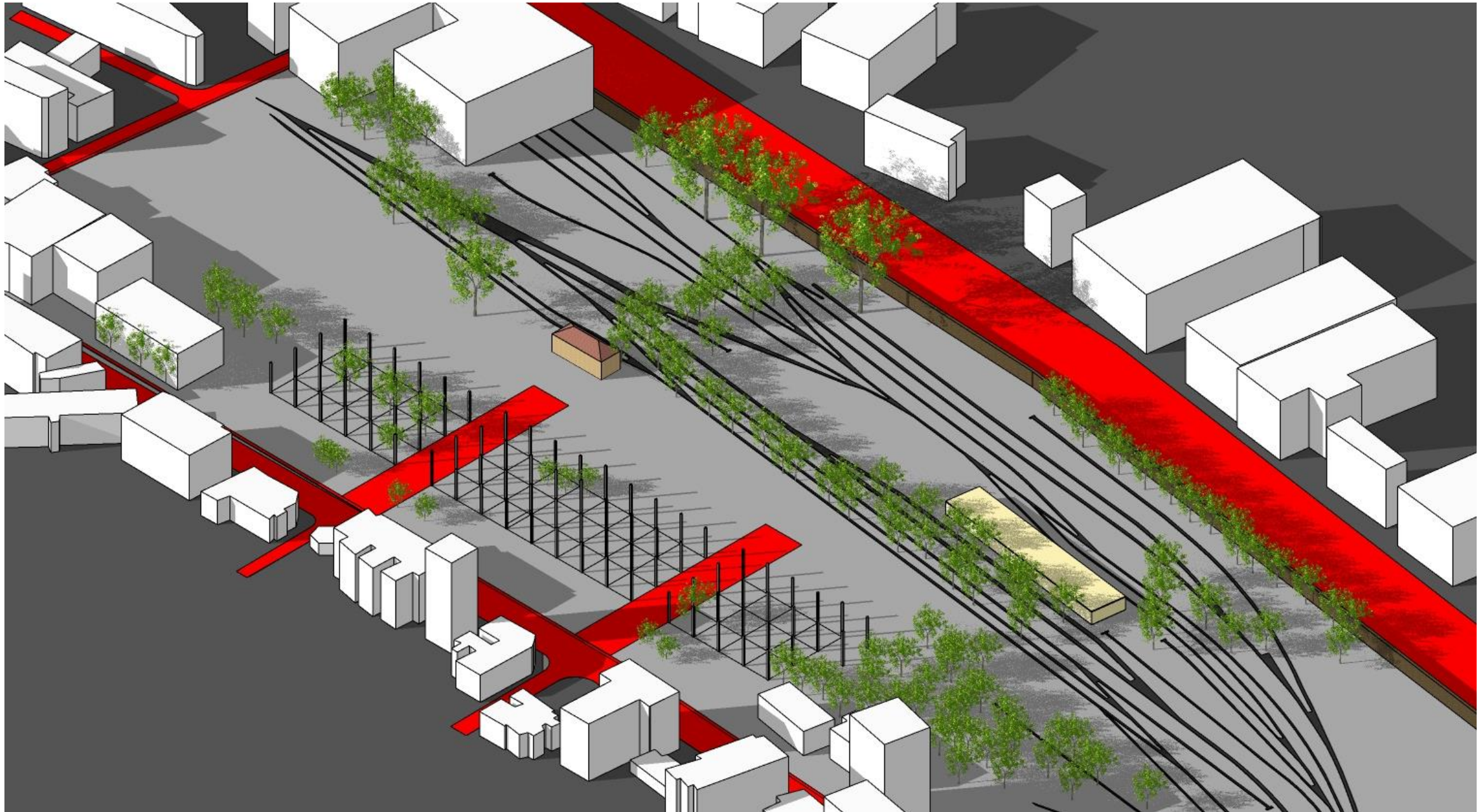
4- 5 Restaurants 600m²/1

5- 10 Pubs: -4 Pubs 100m² /1
-6 Pubs 50 m² /1

6- Parc and Green Spaces

Conceptual Design Thinking Process

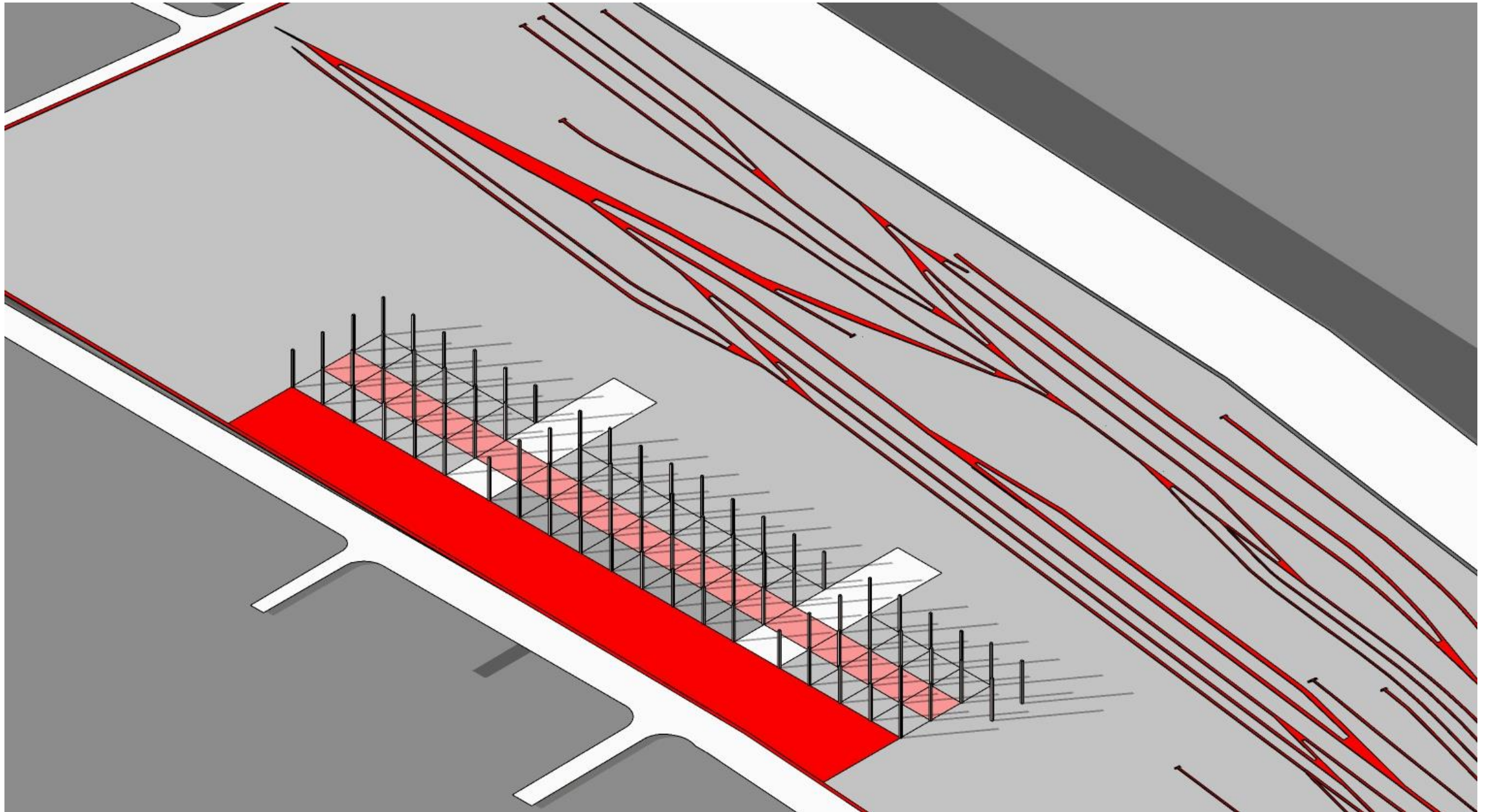
B4 Site Design



Site Respecting existent Urban Borders of the land.

2 Axis Linking the Urban Fabric to the Project

Grid's Purpose Organizing the Needs in a Strategical way



Red Band Main Plaza, **Urban Gathering**

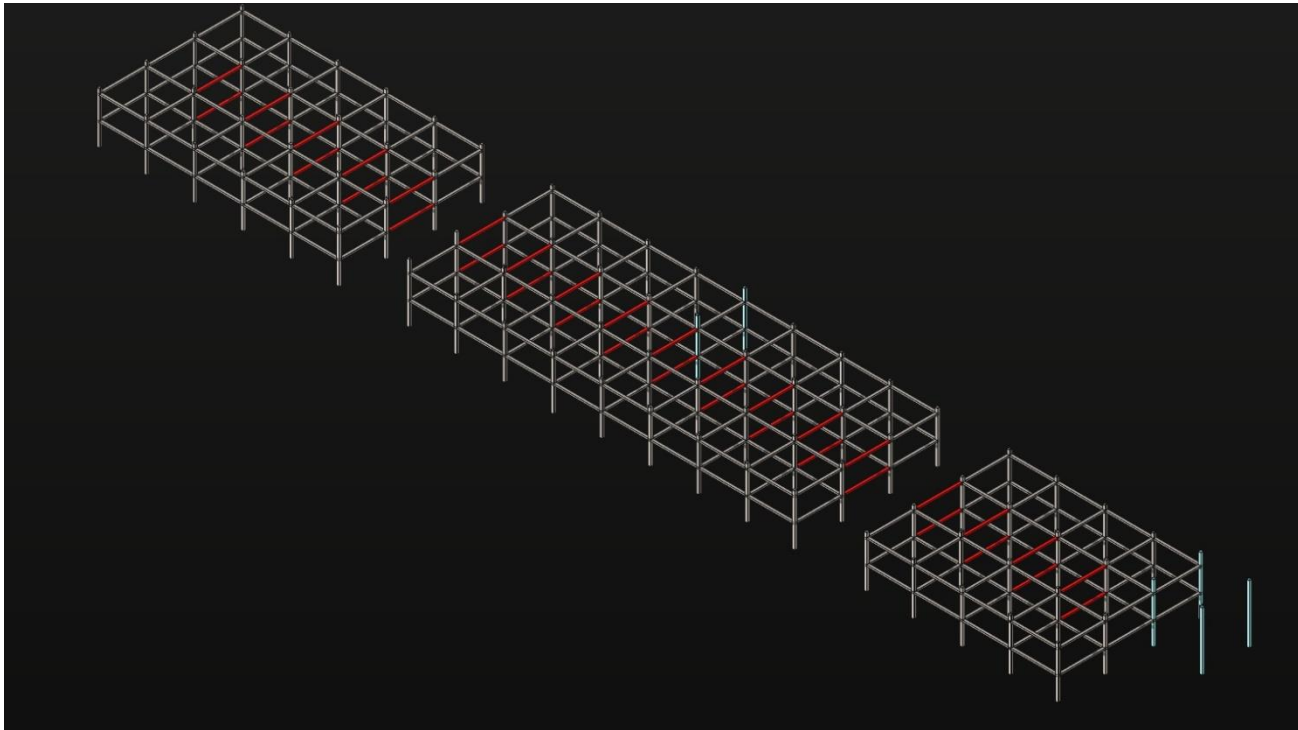
Light Red Band Main **Circulation Plaza** inside of the **Pump Of Options** (*project*)

Regular Structural Steel Grid Platform for adaptability

Conceptual Design Thinking Process

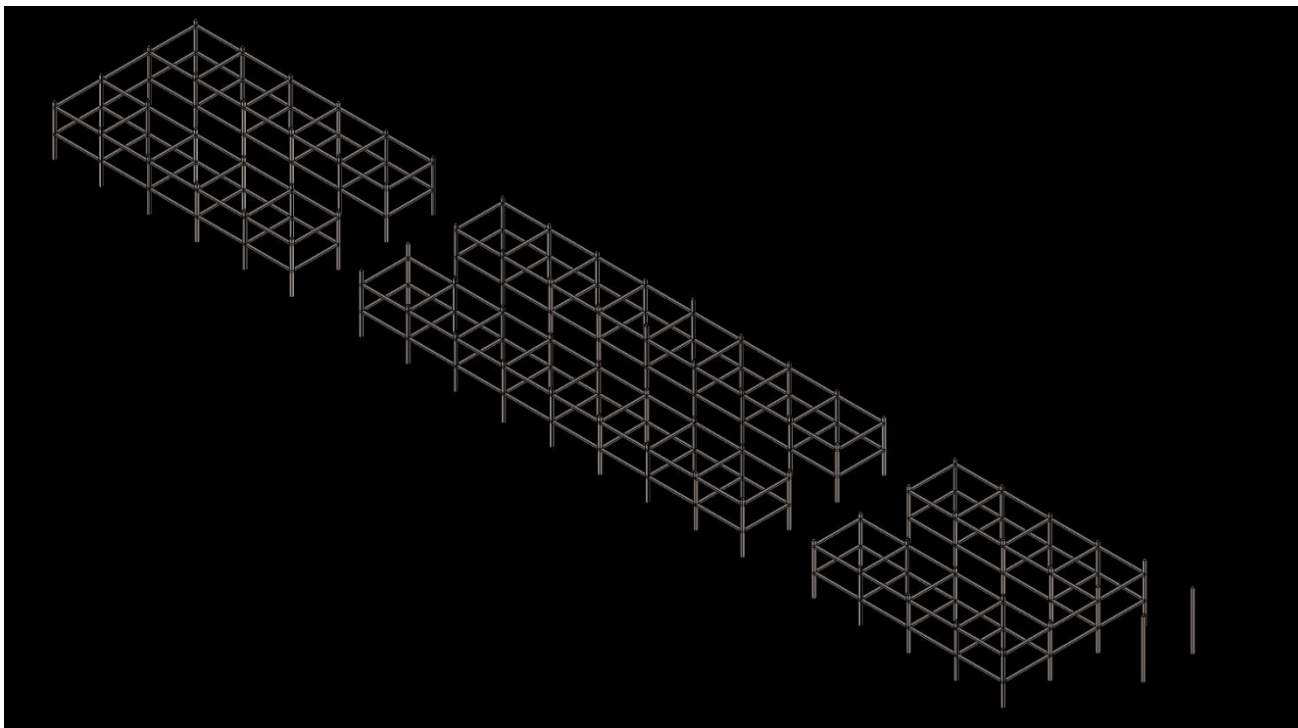
A8 Ordering Systems Skills

B3 Structural Systems

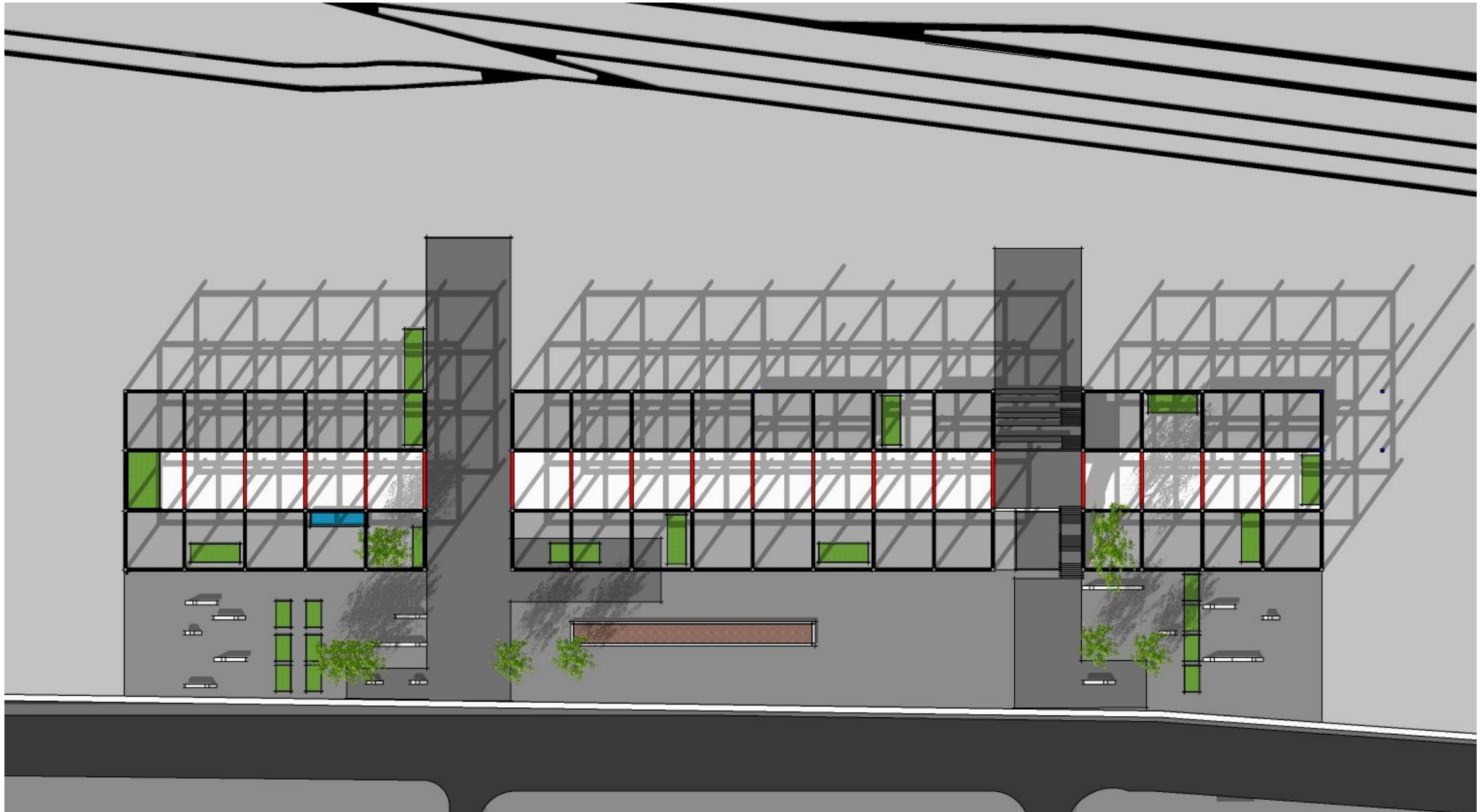


Red elements deleted for the sake of serving the Concept.

Blue Elements: Stretched elements for the volume design.



Structural System **adopted** in the project (*in relevance to the previously mentioned axis*)

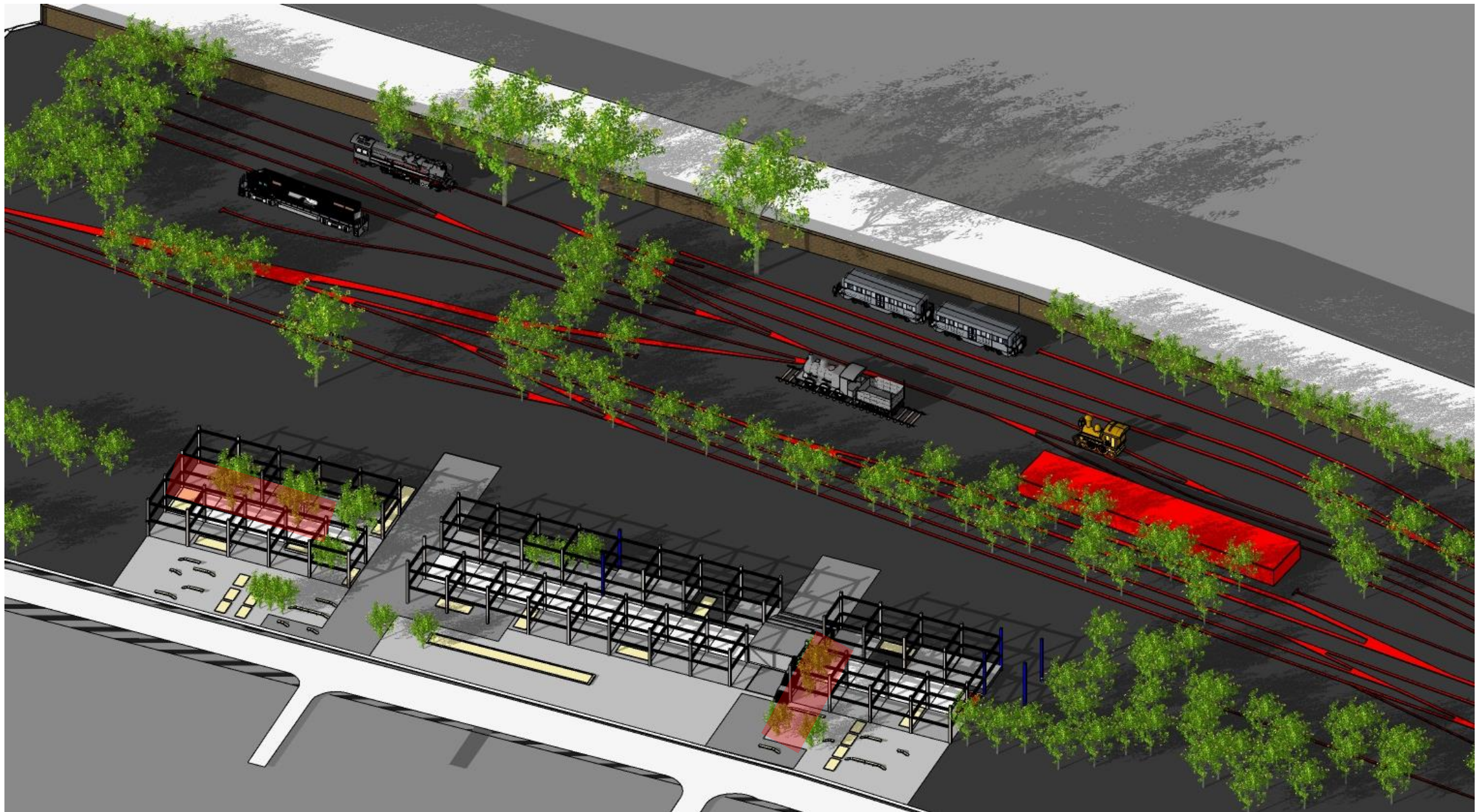


Red elements deleted for the sake of serving the Concept.

Blue Elements: Stretched elements for the volume design.

Intersection Axis and Plaza are articulated in a creative and smart way, enhancing the attractiveness of the Site.

Everyone is welcomed in here!



Integration

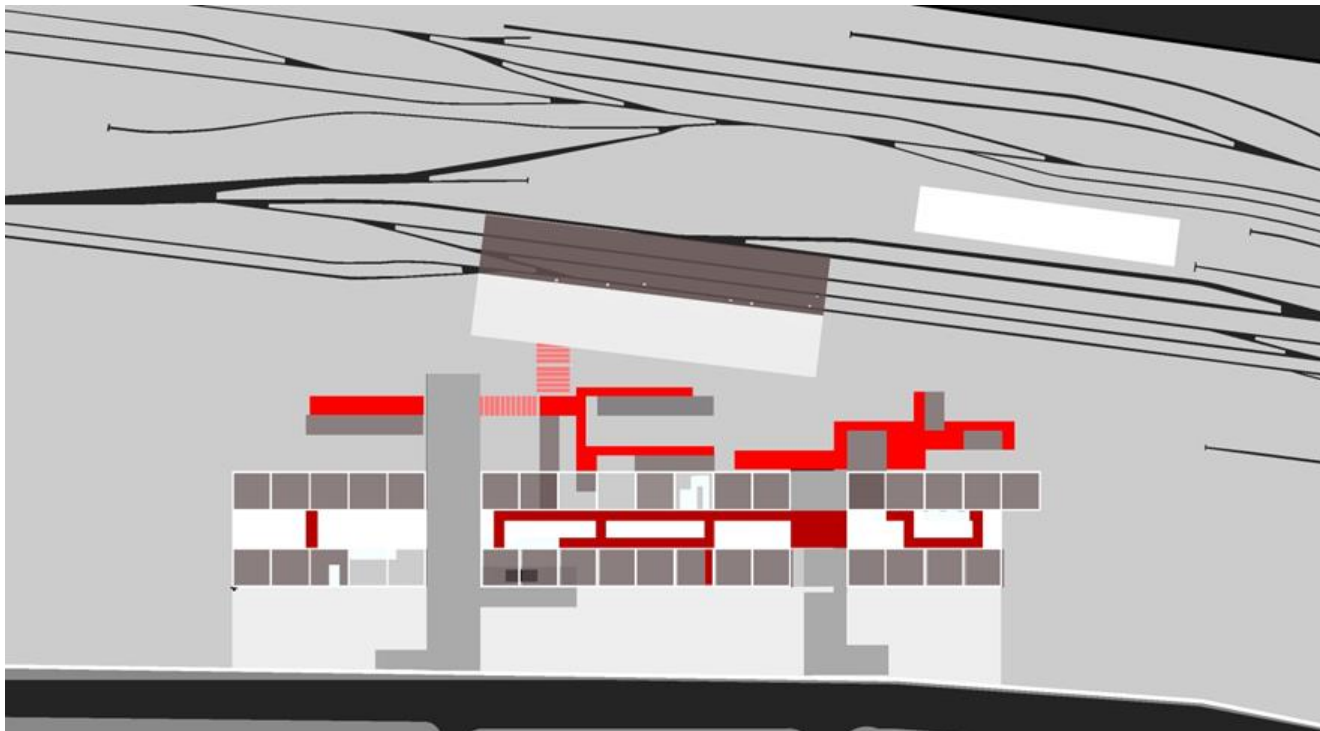
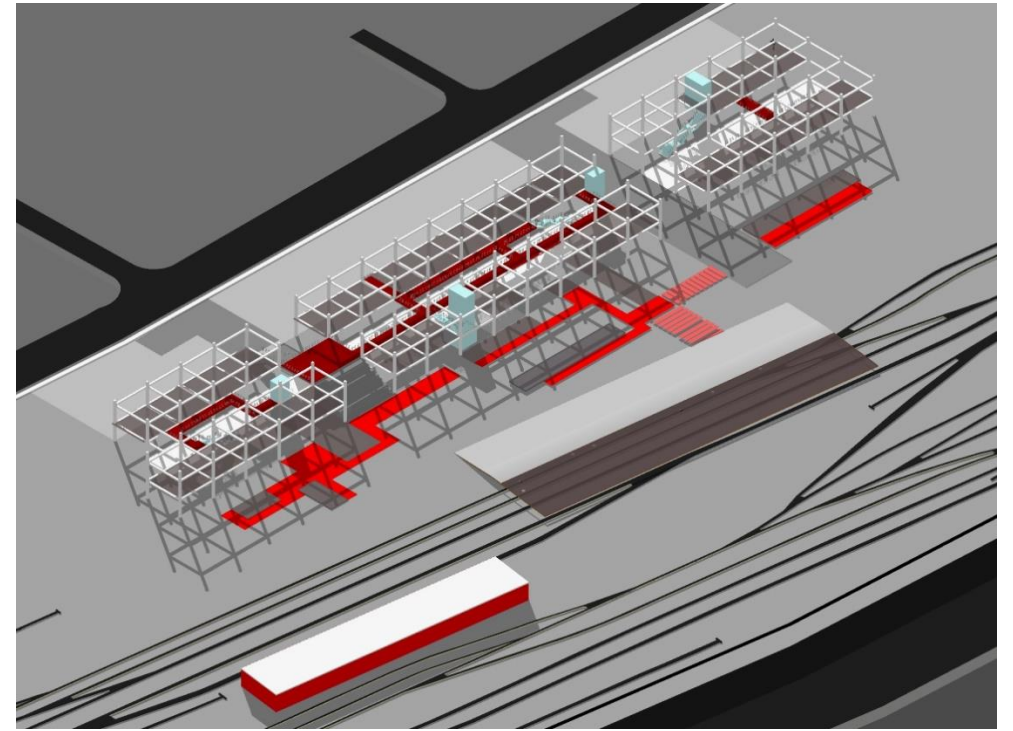
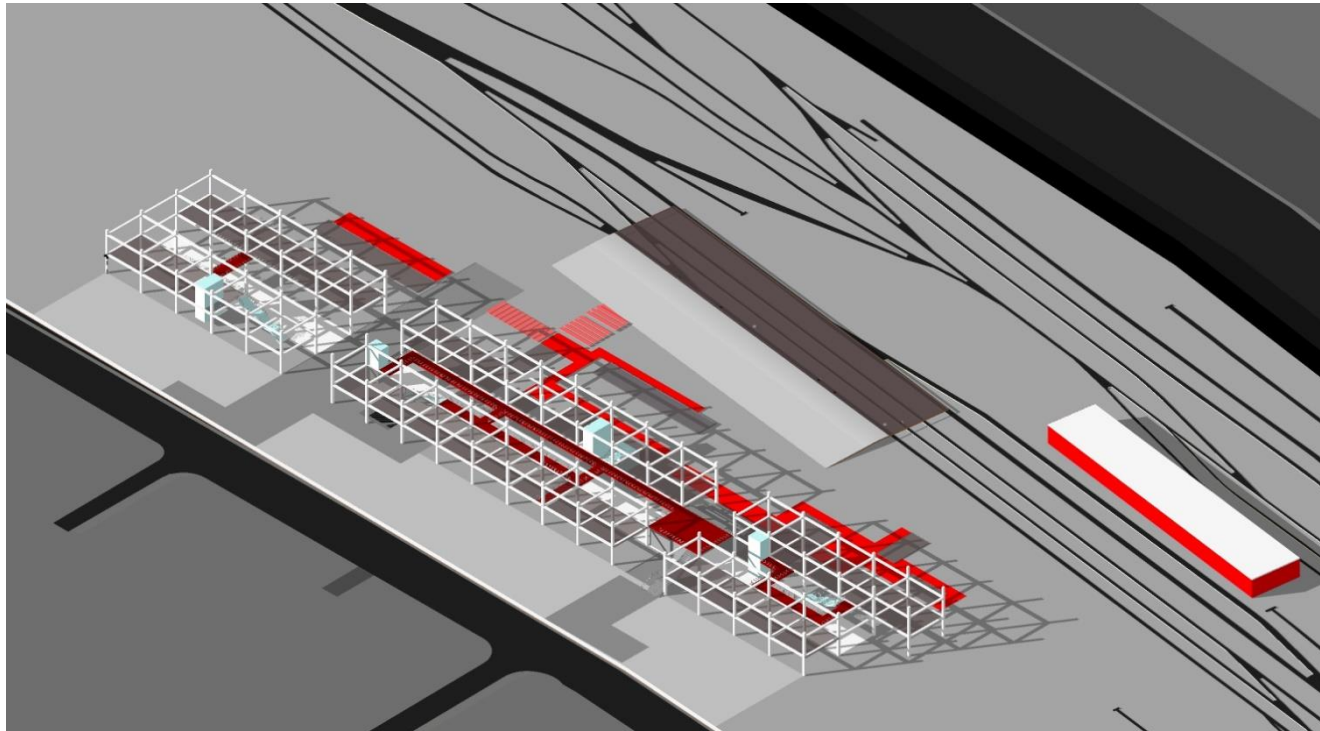
Existing Trees are integrated in the project , along the main circulation axis, and in between the function blocs.

The **Railway** is left "intact" **BUT** is used in developing the concept.

Reconverting the **Hangar** into a Wood Workshop.

Conceptual Design Thinking Process

B2 Accessibility

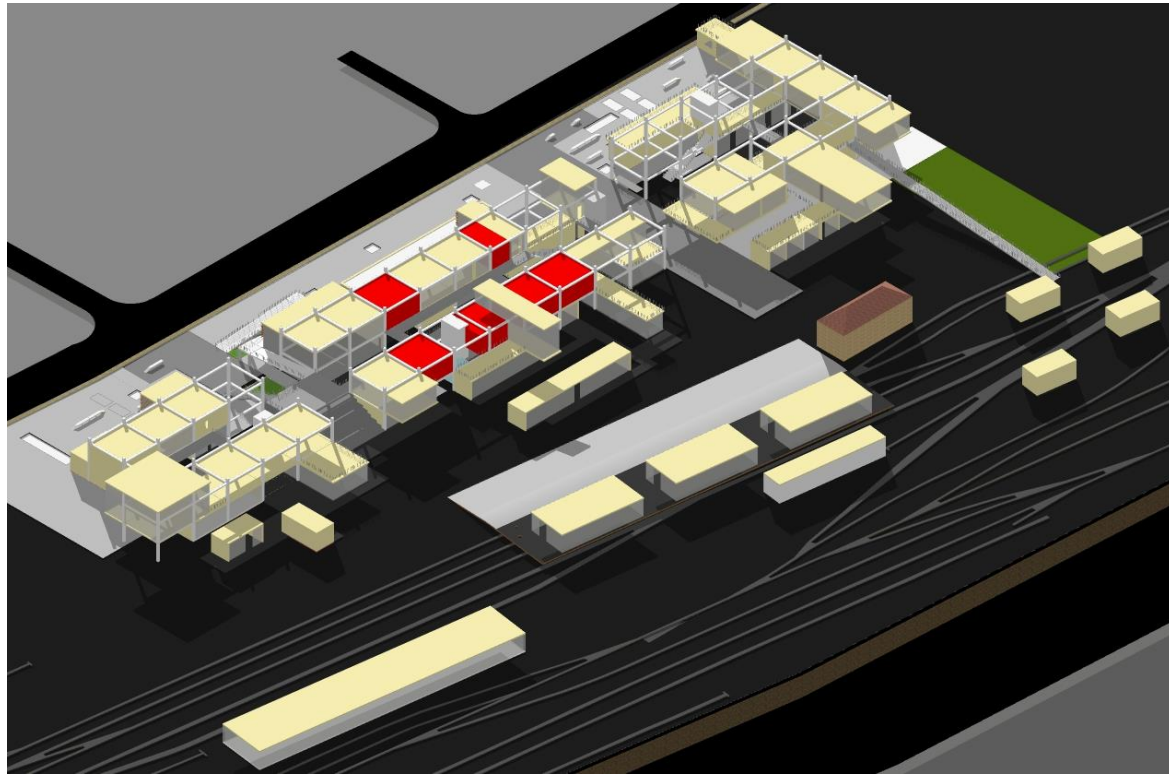


Dynamic circulation paths from the 2 axis towards the dispersed blocs in the park

Minimum needed circulation paths inside the atrium on the first level.

Conceptual Design Thinking Process

A2 Design Thinking Skills



Flexibility of the System

Having embedded the beams and columns , there's a chance to **Add** or subtract **Volumes** regarding the future Needs of the Population (more/less commercial shops- more/less artisanal Studios)

Conceptual Design Thinking Process

A8 Structural Systems

B8 Environmental Systems

Volumetric Cover in PTFE sheets :



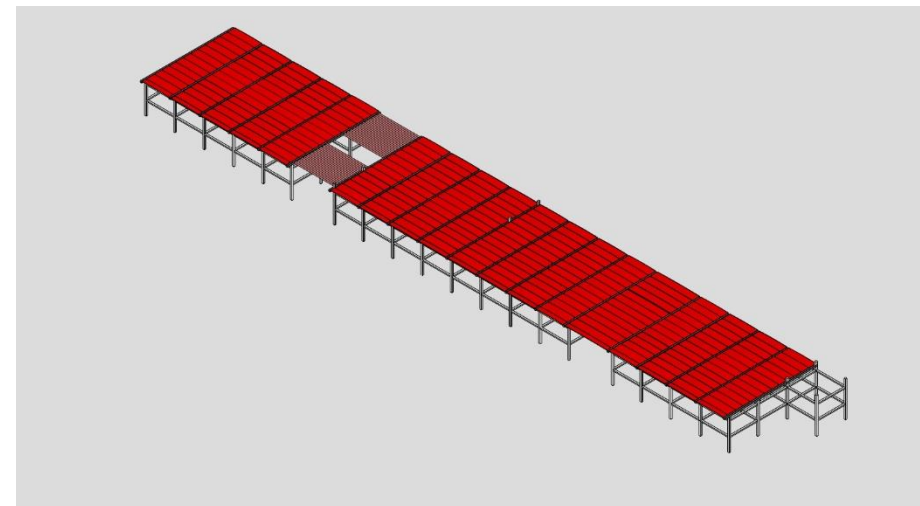
Structural and Environmental System

Light Weight = Minimum Load Charge on the whole Structure.

1.2 x 9.6 m sheets articulated on arched steel beams with **water evacuating U-Shaped tubes**.

High endurance to Traction

Water and elevated/low **Heat** Resistance – **Ultraviolet rays** **Resistance**



Volumetric Cover in PTFE sheets :

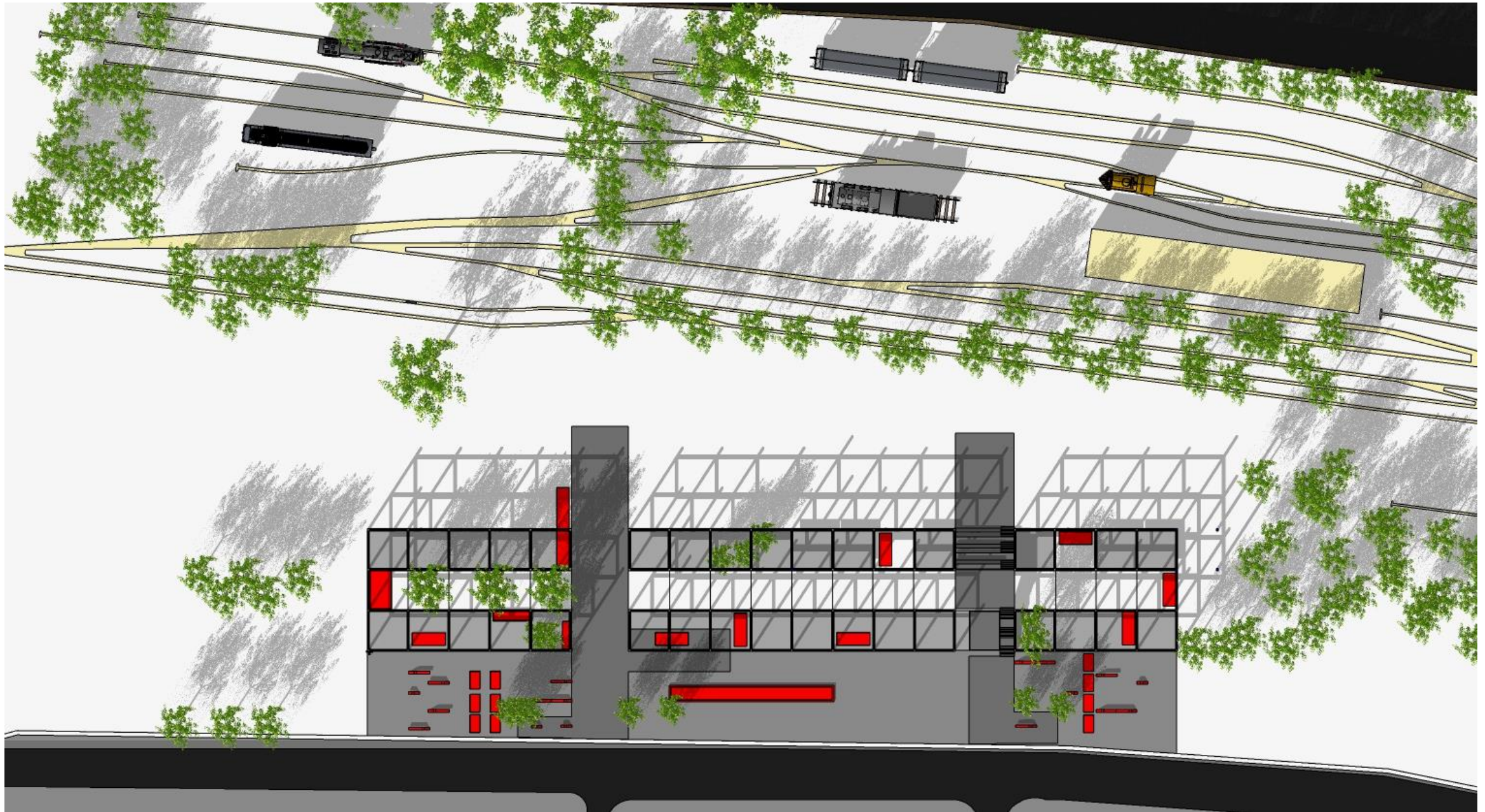


Design Capacity

Luminosity – Transparency – Translucid – Design

Friendly and Welcoming mood underneath it

Dynamic mood during night time with internal lighting in the blocs.

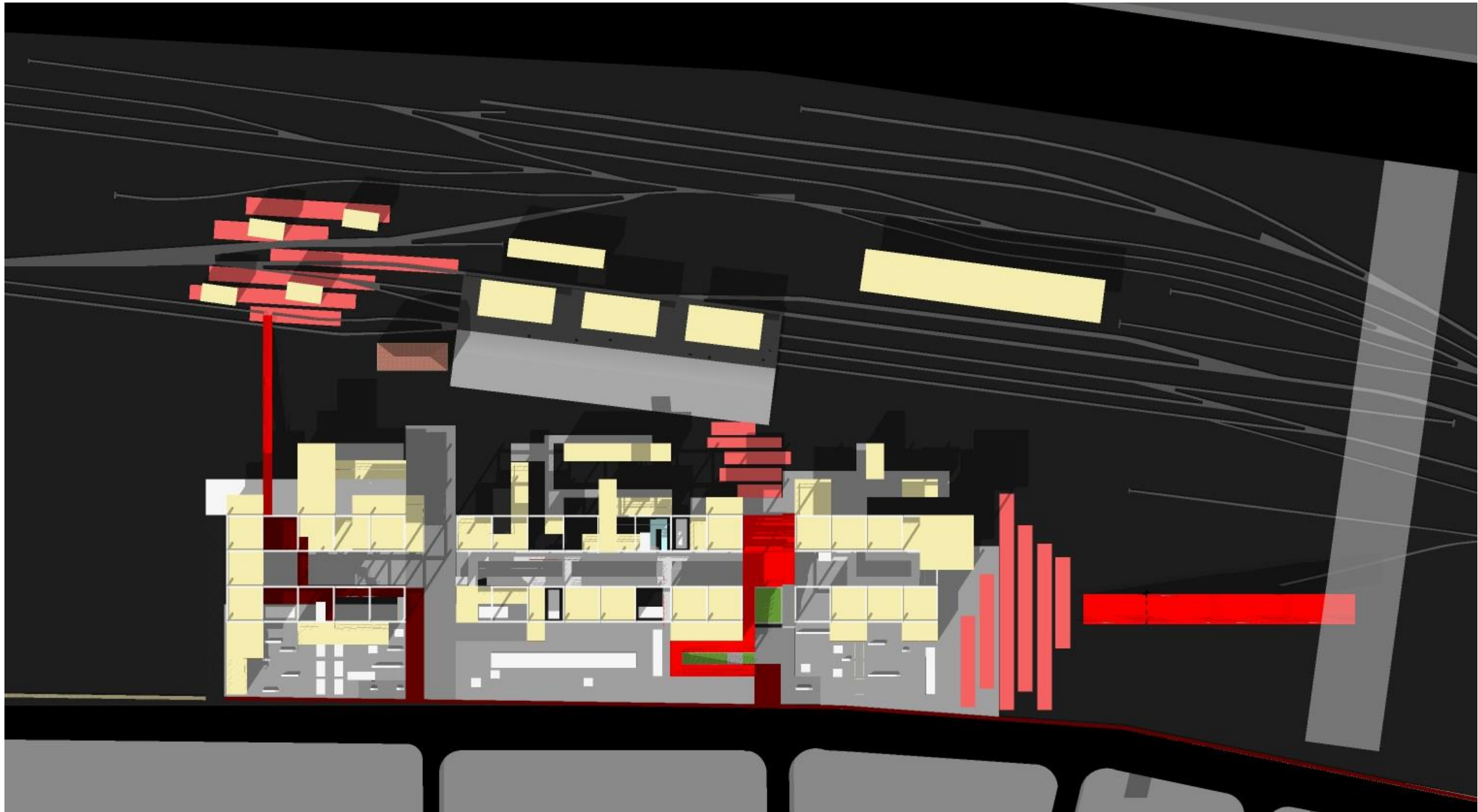


Integration

Urban Landscape and Furniture are articulated on the Ground Floor upon the Gathering Plaza and in between the functions to be conceived.

Conceptual Design Thinking Process

B2 Accessibility



3 Public Ramps are used to facilitate the access of those in need to the whole project.

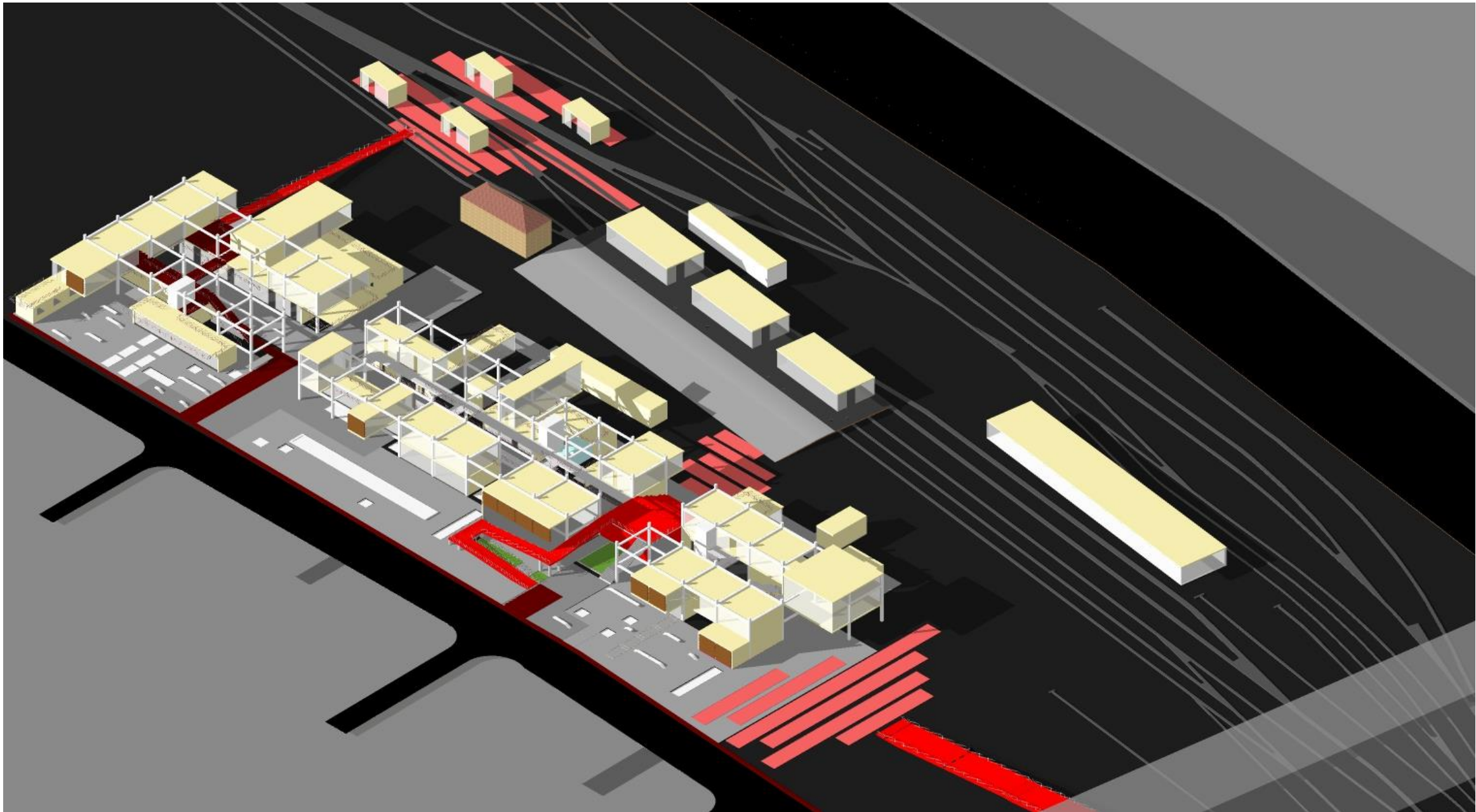
The **Right** one links the intervention shown in white to the Main Plaza, allowing an important group of people to join the Beirut's Pump of Options project.

The **Central** one allows everyone to access the first floor throughout Armenia Street Plaza

The **Left** one allows everyone in the Restaurant zone to access the Pubs Area rapidly.

Conceptual Design Thinking Process

A9 Historical Tradition and Global Culture



Circulation for animation:

The Ramp from the Main Plaza converge around the painting workshop to ensure maximum visual interaction **Art-Public-Nature** . It is followed by a **Gradin** used as a **Outdoor Open Theater for festive cultural and artistic events.**

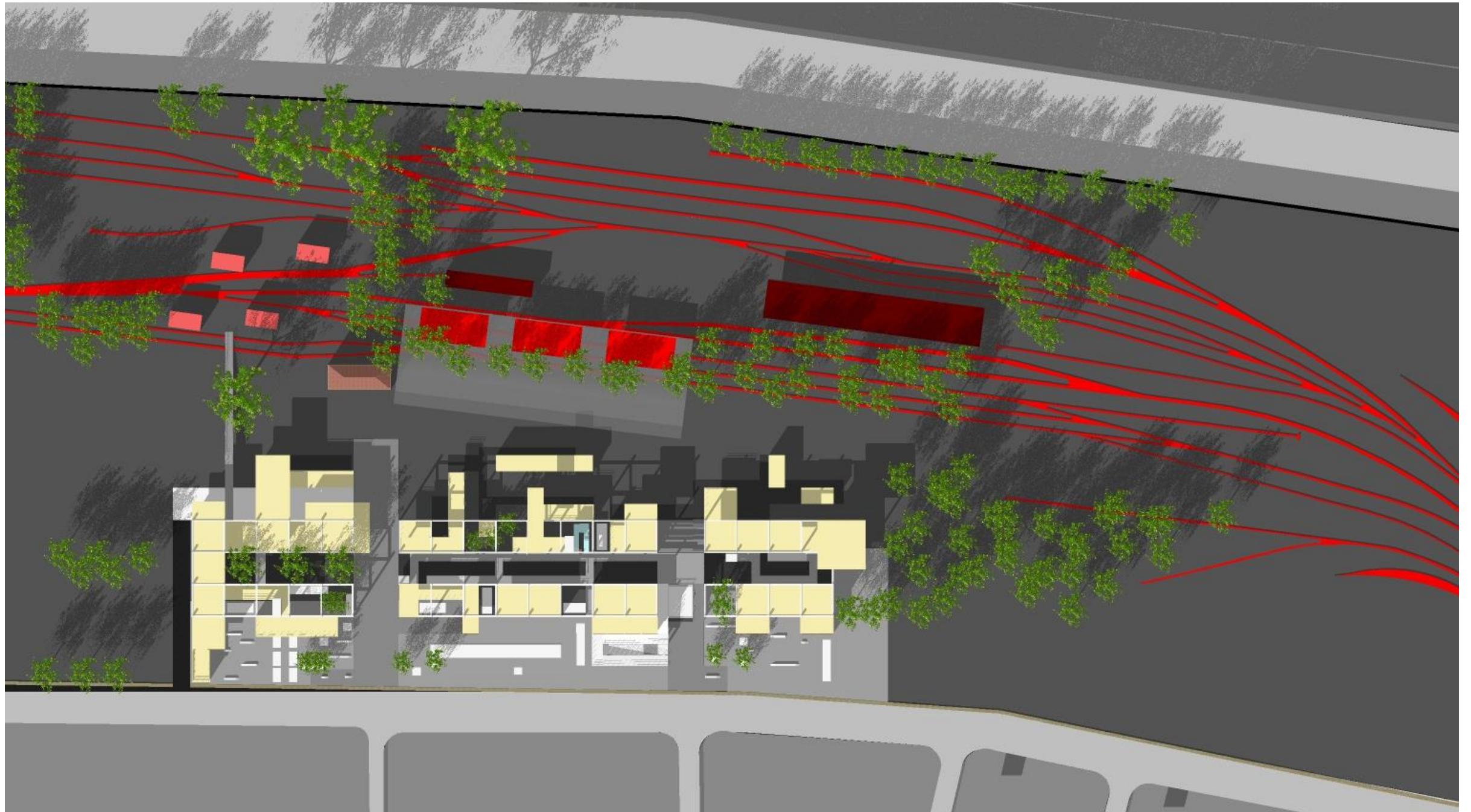
The flow of people coming from Gemayze is directed either towards the Pubs and public Park or towards the Furniture Workshop.



Promoting the artistic and handcraft Cultural Heritage of Mar Mikhael and Gemayze

throughout the **Furniture Workshop**, the Product of the central Art Hub.

They are inserted **Above** the **train Railway** on a platform Following their Path of the
Historic Figure



Location Facing the the central Art Hub (*central zone*)

The Pubs on the left are spread between the different rails upon the soil ground.