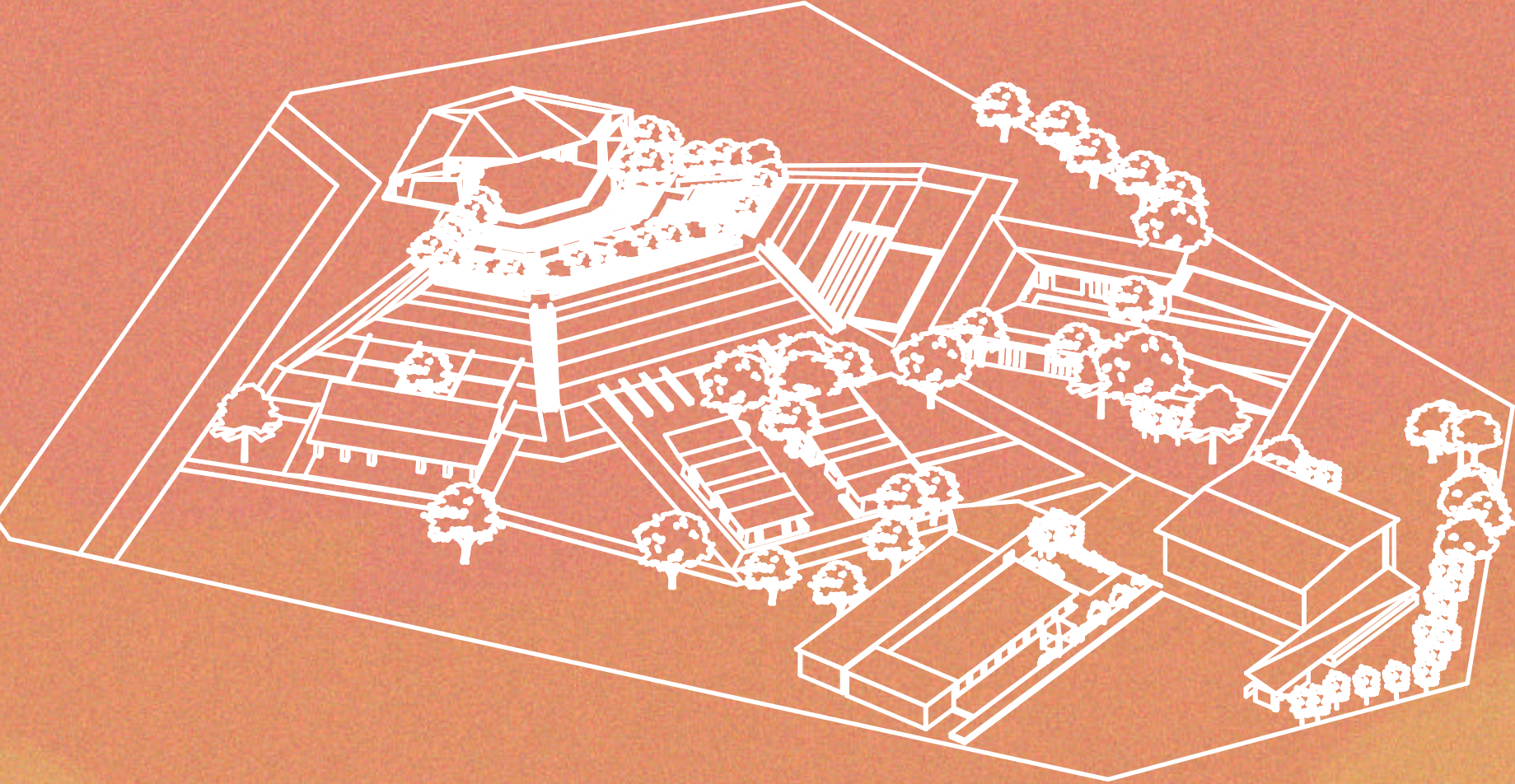


Talus as container and/or content

Theatre Populaire IDEA(L)
Rehabilitation of
Théâtre Populaire Désiré Bonogo



Project idea

Talus: An element taken from the place itself (talus), replicated and conditioned in various ways in order to fulfill different roles.

Container: The talus is conditioned to act as a container of the activities that take place in the various areas of the project.

Content: The talus also houses a series of natural elements (earth, water, vegetation) resulting in an integrated, protagonist element. As a result, it not only acts as container, it also performs the role of content.

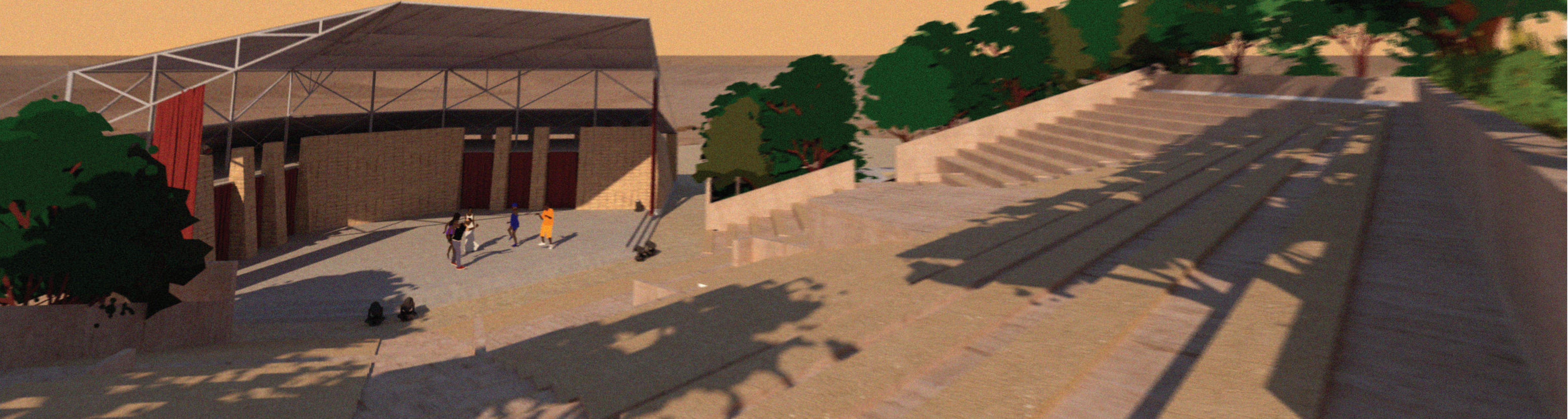
Project components

A. Amphitheater: talus as container and content.
The existing amphitheater is a talus that acts as container. The project thus assigns the additional role of content to the talus, using it to fulfill a series of required functions. As a result, the amphitheater is the project's starting point and unifier. This component is divided in three parts:
-Talus, stage & backstage

B. Permeable earth clusters.
Permeable earth pavilions that respond to the place's climate act as container (but not limiter) of the different activities that the project must support.

These pavilions are then organized and grouped in clusters:
-Work, show & labo

C. Support of collective dynamics.
Agricultural, recreational and ludic activities take place in the talus, central patio and the multidisciplinary educational space, generating a series of collective dynamics. It impulses the different kinds of vegetation, giving them a primary role.

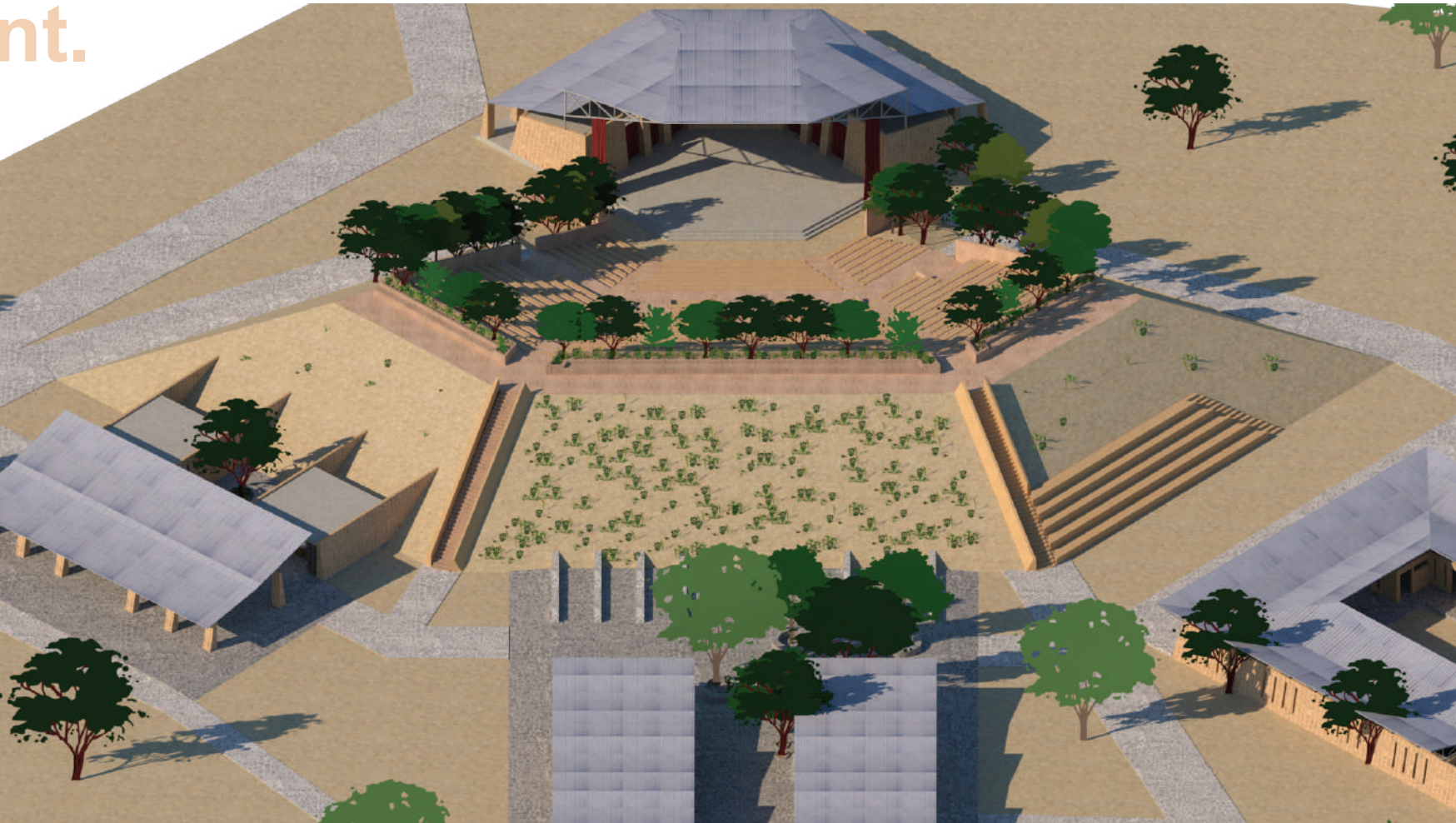


Amphitheater at sunset.

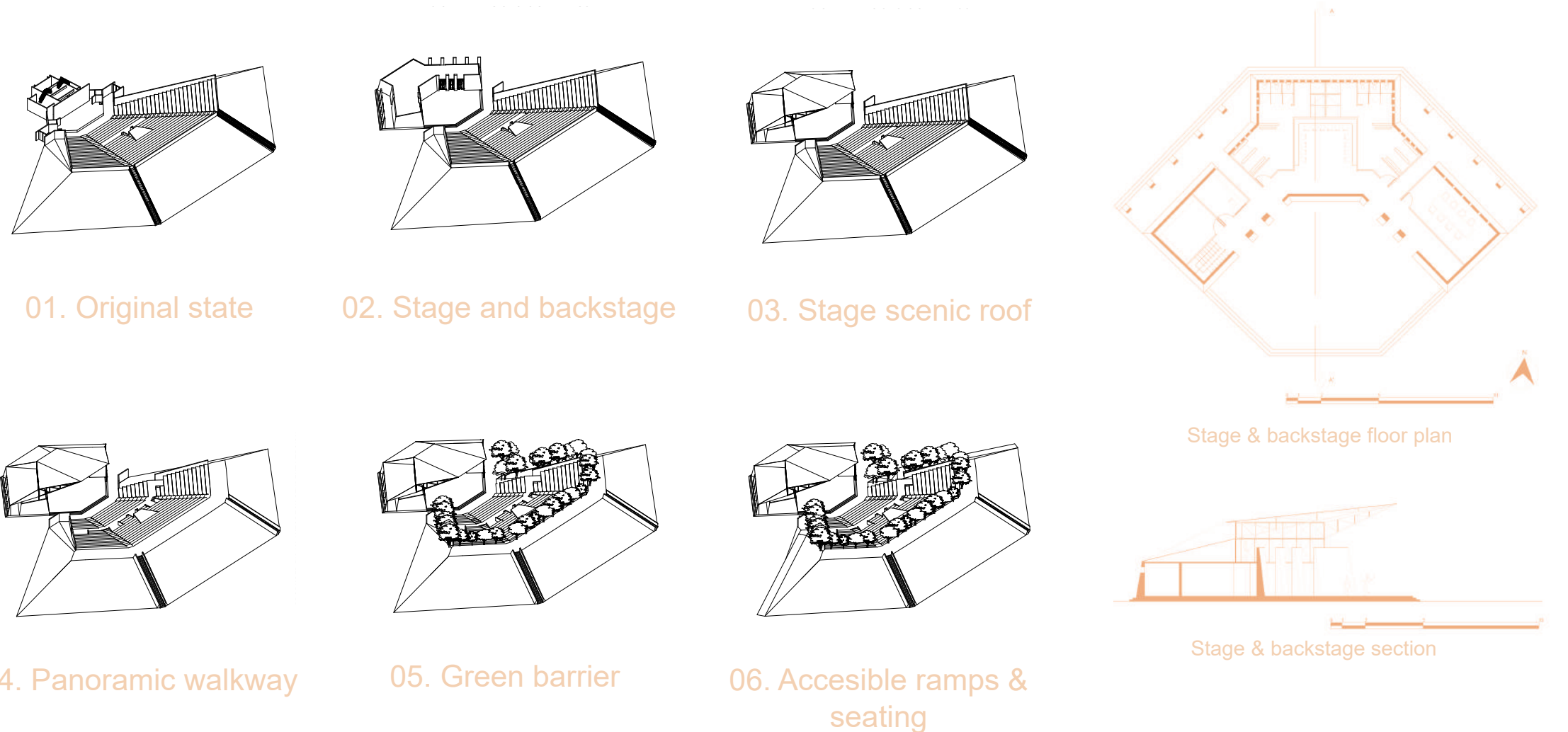
A. Amphitheater: talus as container and content.

Existing amphitheater
As it was mentioned before, the existing amphitheatre is formed mainly by a talus that acts as a container and the stage part. The talus contains the activities that take place in the amphitheater itself and supports bleachers with the capacity of 2,500 seats as well as a projection cabin. The stage area currently houses one meeting room, two dressing rooms for artists, two bathrooms, and the stage area. There is also an exterior building that has five offices and a ticket office.

Intervention description
The intervention consists of two parts: the talus and the stage area. The talus is given the additional role of content, articulating the presence of the three programmatic components (WORK, SHOW and LABO). Two new walkways are generated: one on the top of the talus and one in the middle of the seating area. The existing green elements' presence is strengthened by generating a green barrier that protects from the sun and exterior noise. As for the stage part, the required program is contained by a permeable earth cluster that replaces the old and enlarges the stage dimensions. Finally, a light roof is generated.



General view of the talus.

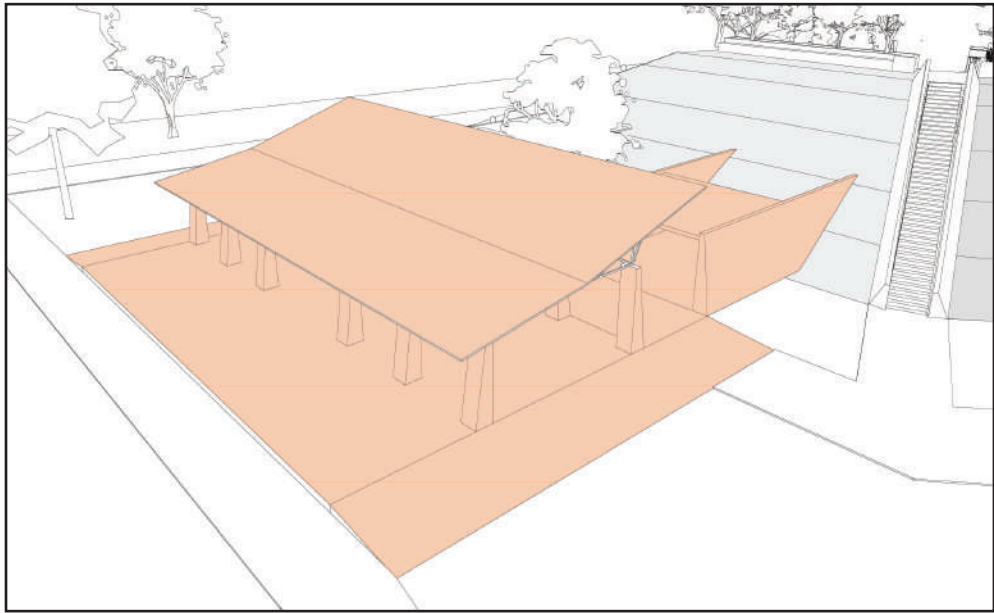


B. Permeable earth clusters.

WORK

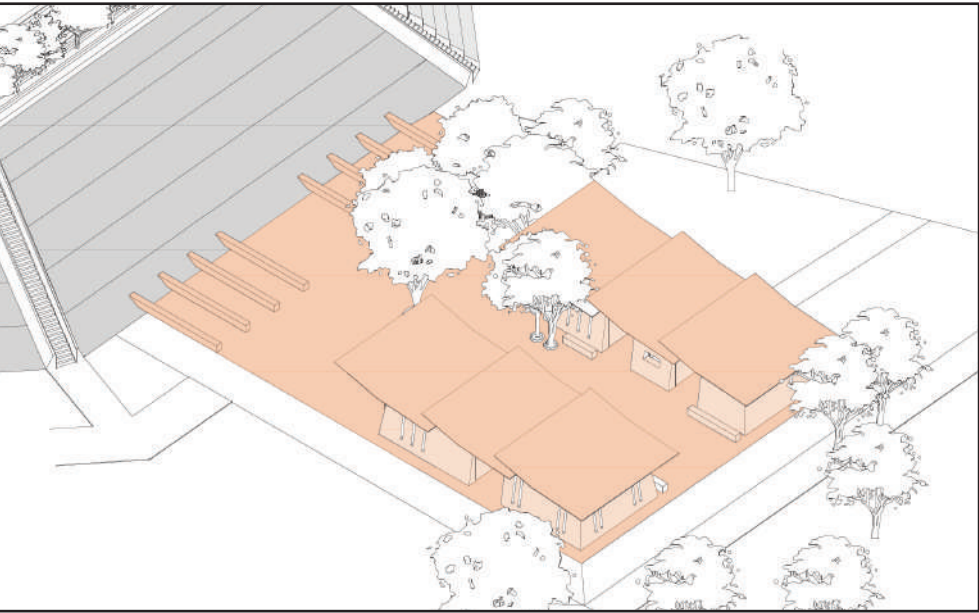
Two volumes are embedded in the existing talus, each containing different activities required in the program. Between these two volumes a void is generated which will be used as an open terrace.

As a third element, a permeable structure is generated parallel to the talus of the amphitheater, which houses different activities belonging to the scenography workshop.



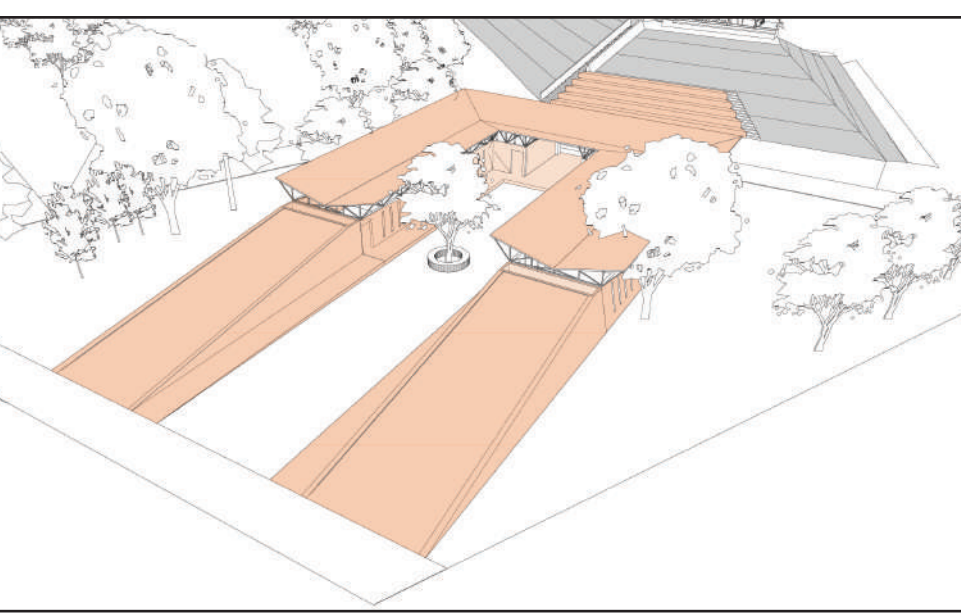
SHOW

Five volumes that together form two permeable earth clusters contain most of the Show program, binded together by a platform that encompasses the component. The space between them and the existing amphitheater talus generates a conviviality space that acts as the Amphitheater vestibule and distributor to the other components. A patio where temporary stalls can be placed freely is also generated in the middle.



LABO

The programs are arranged in a U-shaped volume generating a central courtyard. The lateral parts of the element are lengthened creating two productive Talus. Likewise, a multipurpose educational space was created with bleachers using the existing talus of the amphitheater for it.



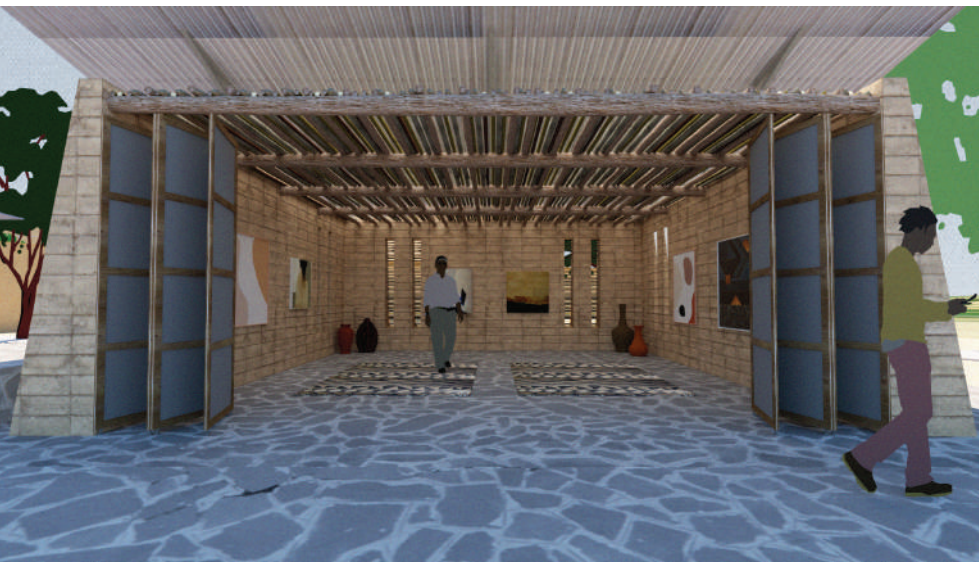
Workshop area.



Sewing workshop and open terrace.



Café, conviviality space.



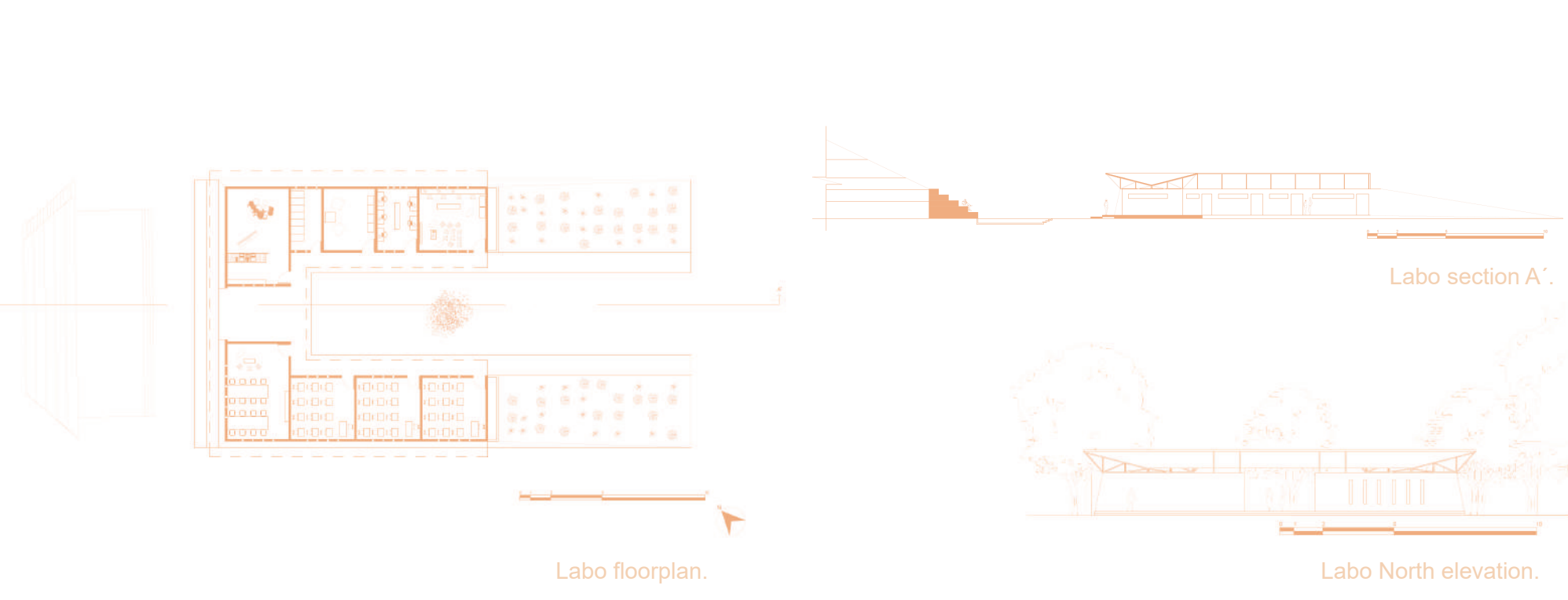
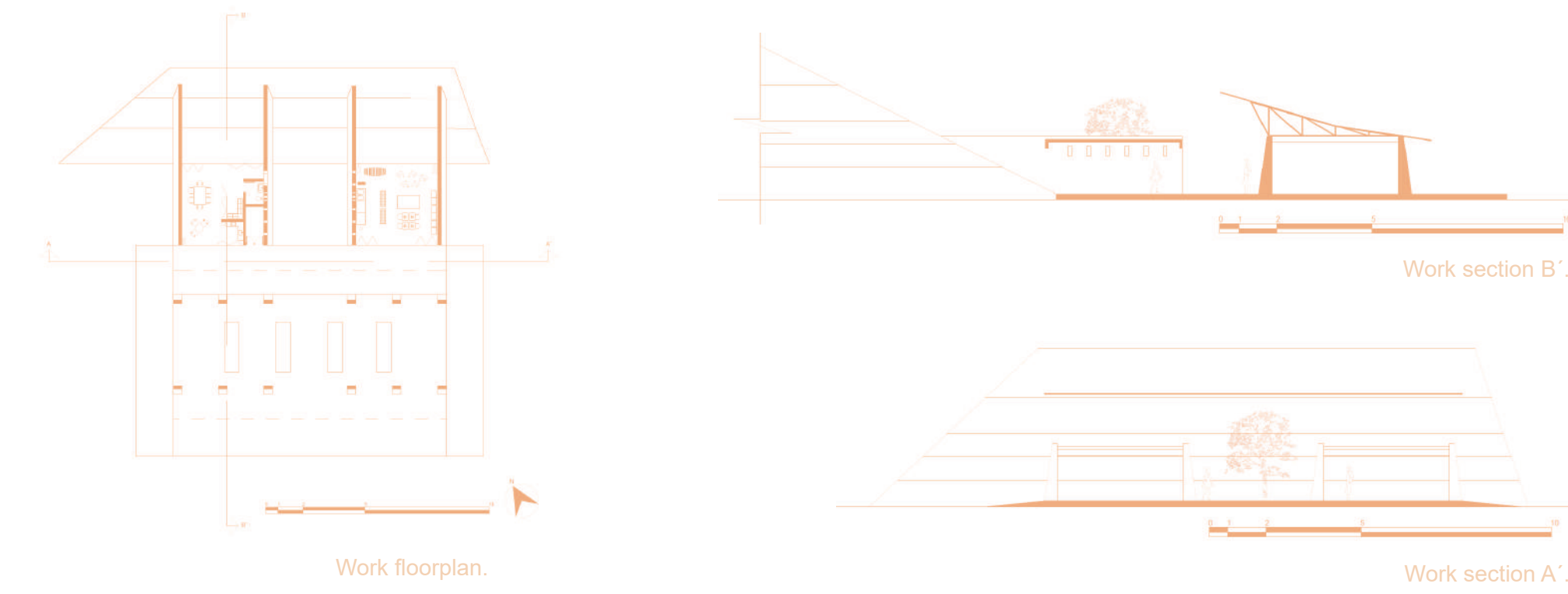
Gallery.



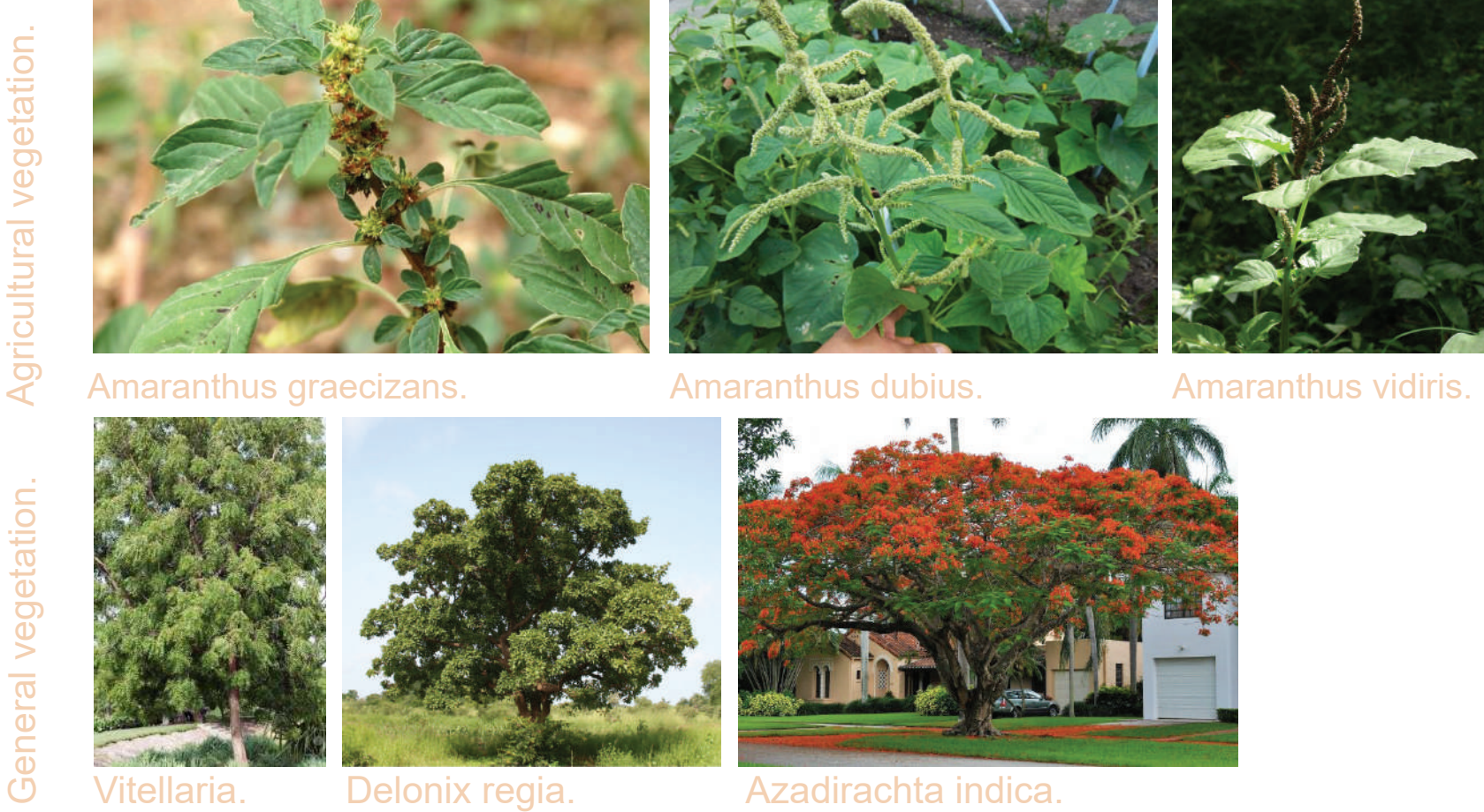
Labo patio.



Classroom.



C. Support of collective dynamics.



Agricultural, recreational and ludic activities take place in the talus, central patio and the multidisciplinary educational space, generating a series of collective dynamics. It impulses the different kinds of vegetation, giving them a primary role. Rainwater harvesting through the light roofs and a water dispenser on the top of the talus will allow the slow irrigation of the vegetation.

Materiality.



Technical information.

