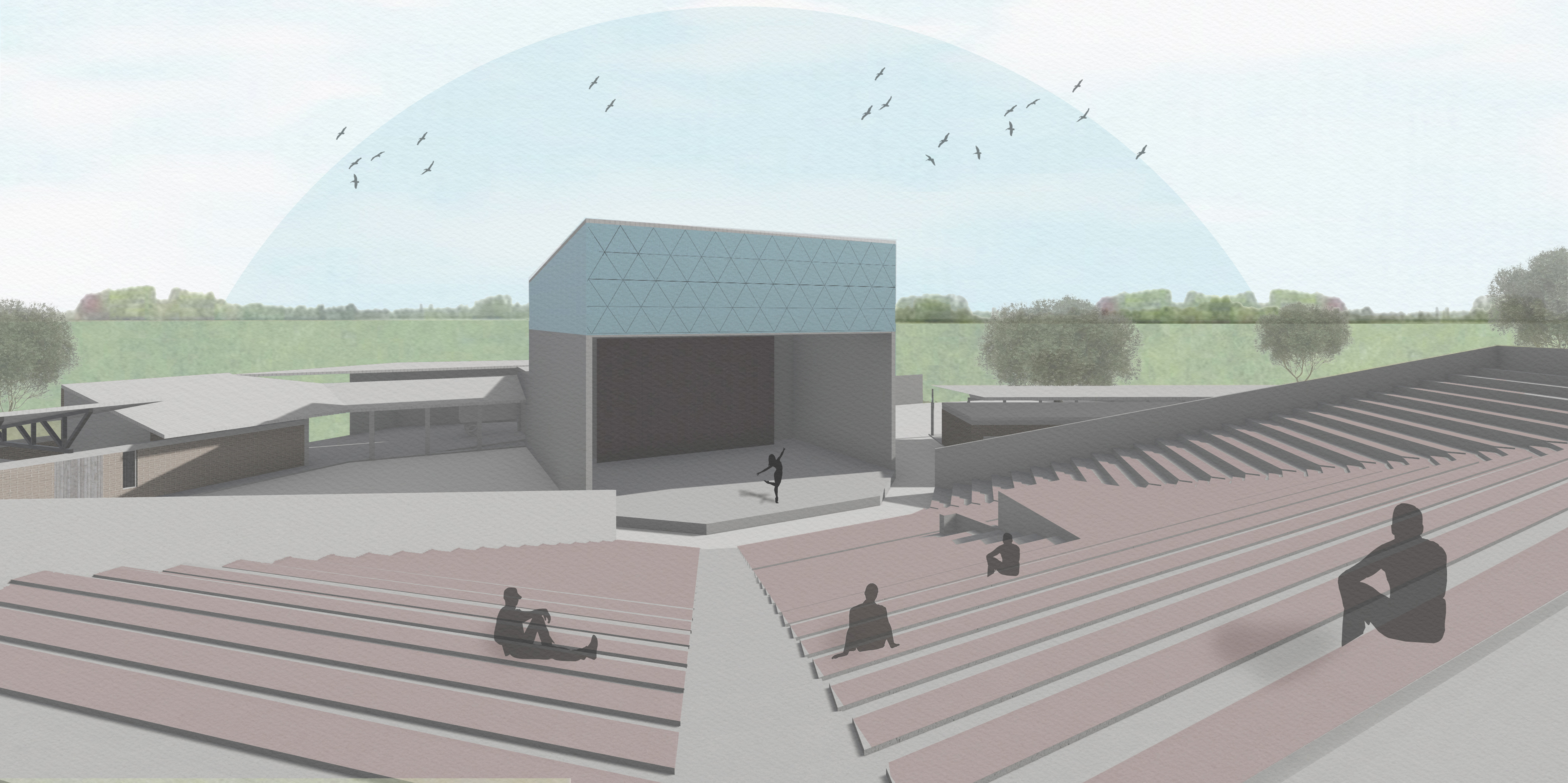


RÉHABILITATION OF THE THÉÂTRE POPULAIRE DÉSIRÉ BONOGO



Main Idea

The main idea of renovation cultural area was to share part of the land as public square meanwhile the second part relate to theater can stay private. Attitude forward renovation is about respecting most of the existing buildings and connecting south part with the amphitheater.

Description

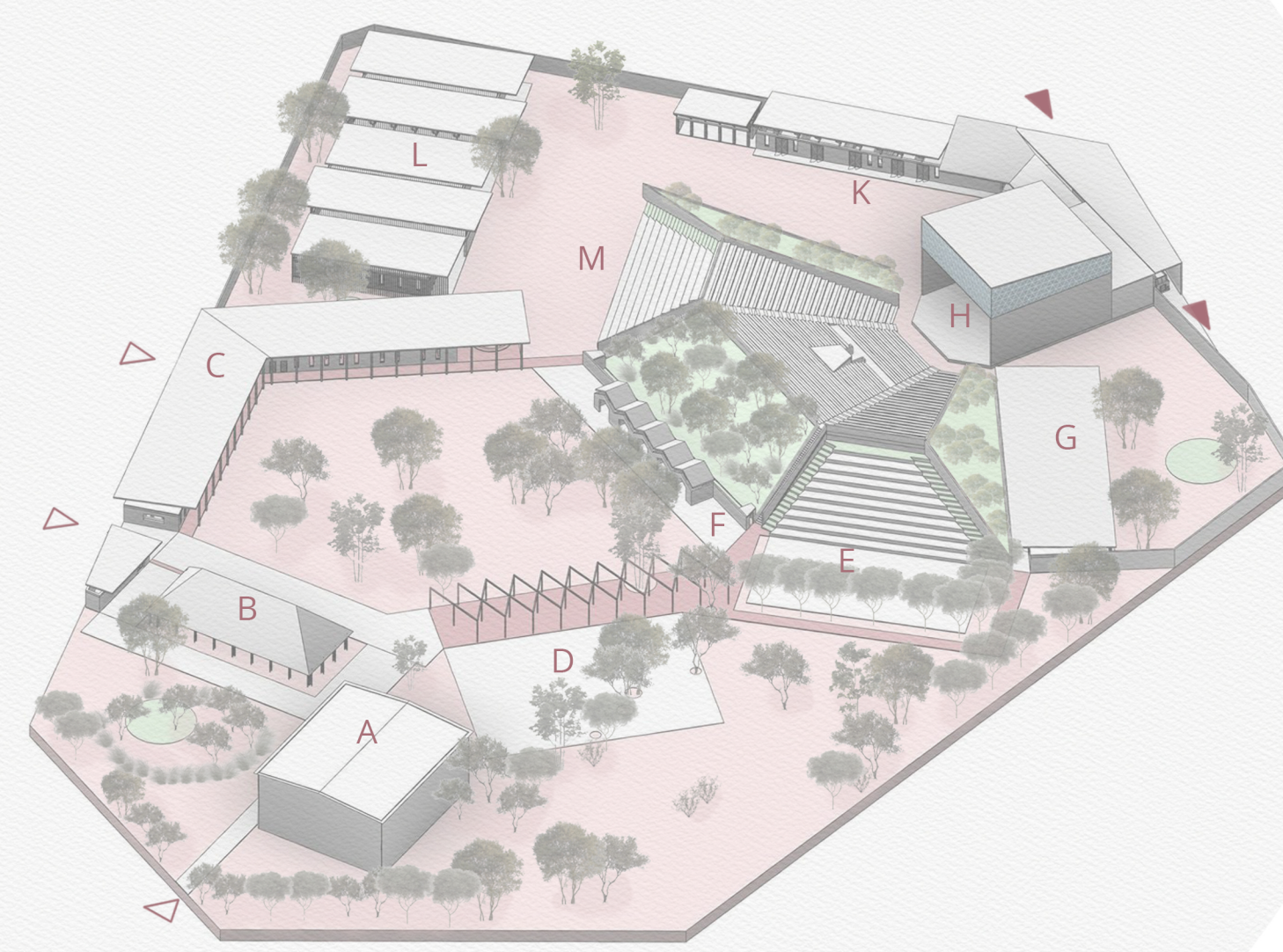
There are three entrances to the area, two from west and one from parking on the south. Through the entrance points visitors get to public open space, where is the original meeting place under the roof, new square and new dancing surface.

The original southern object is supposed to be accommodation. To the straw cover object is added little storage for furniture and the function stays same. The surrounding building around is demolished and the concrete slab is used as pavement, from which go two strengthened ways through the square to the theater. The square on west side is surrounded by building for public services and administration and building for multimedia rooms. The opposite side covered with wooden construction with textile and has access to dancing place. The square north side is closed by the theater and 5 tiny objects with pitched roofs, which are used as sale points during some event. On both sides from here are located stairs complete with covers for thicket checker. Then from left side of the auditorium people get to labo zone with private amphitheater. From right side is access only for actors to their object. The rest in total north part is the covered stage building completed by work zone from left side and garage from north side.

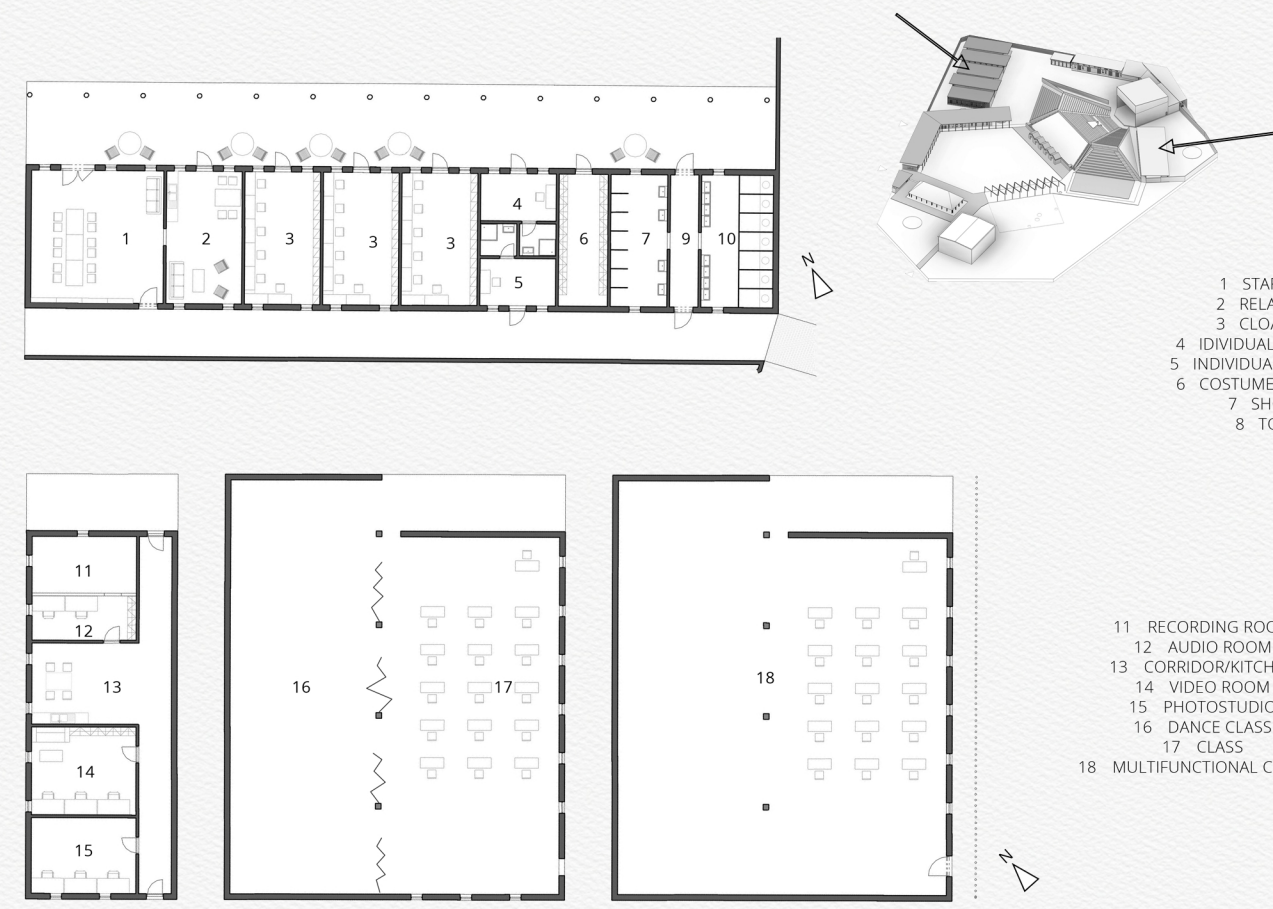
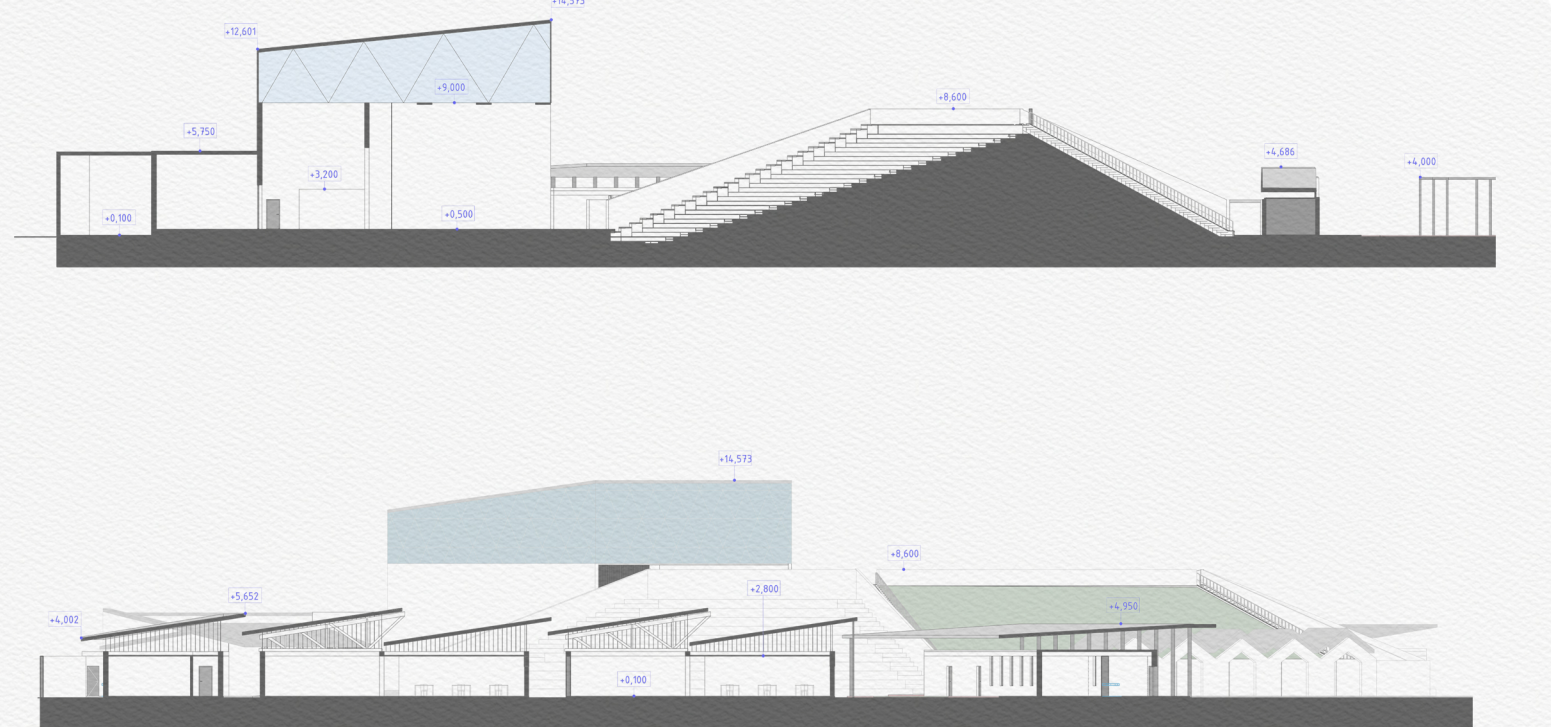
Technical Information

Constructions of new objected are according to local principals. Most of buildings are with brick walls finished by concrete rim. Then comes trusses which hold the roof metal sheet and create ventilated space. The higher walls (stage building, garage) are made of concrete decorated with symbols carved in the surface.

- A EXISTING BUILDING - USED FOR ACCOMMODATION
- B EXISTING CONSTRUCTION - USE AS MEETING PLACE
- C KIOSK, ADMINISTRATIVE
- D MEETING PLACE - PARTIES AND DANCE
- E SMALL AMPHITHEATRE
- F EXISTING BUILDING - USED AS SALE POINTS

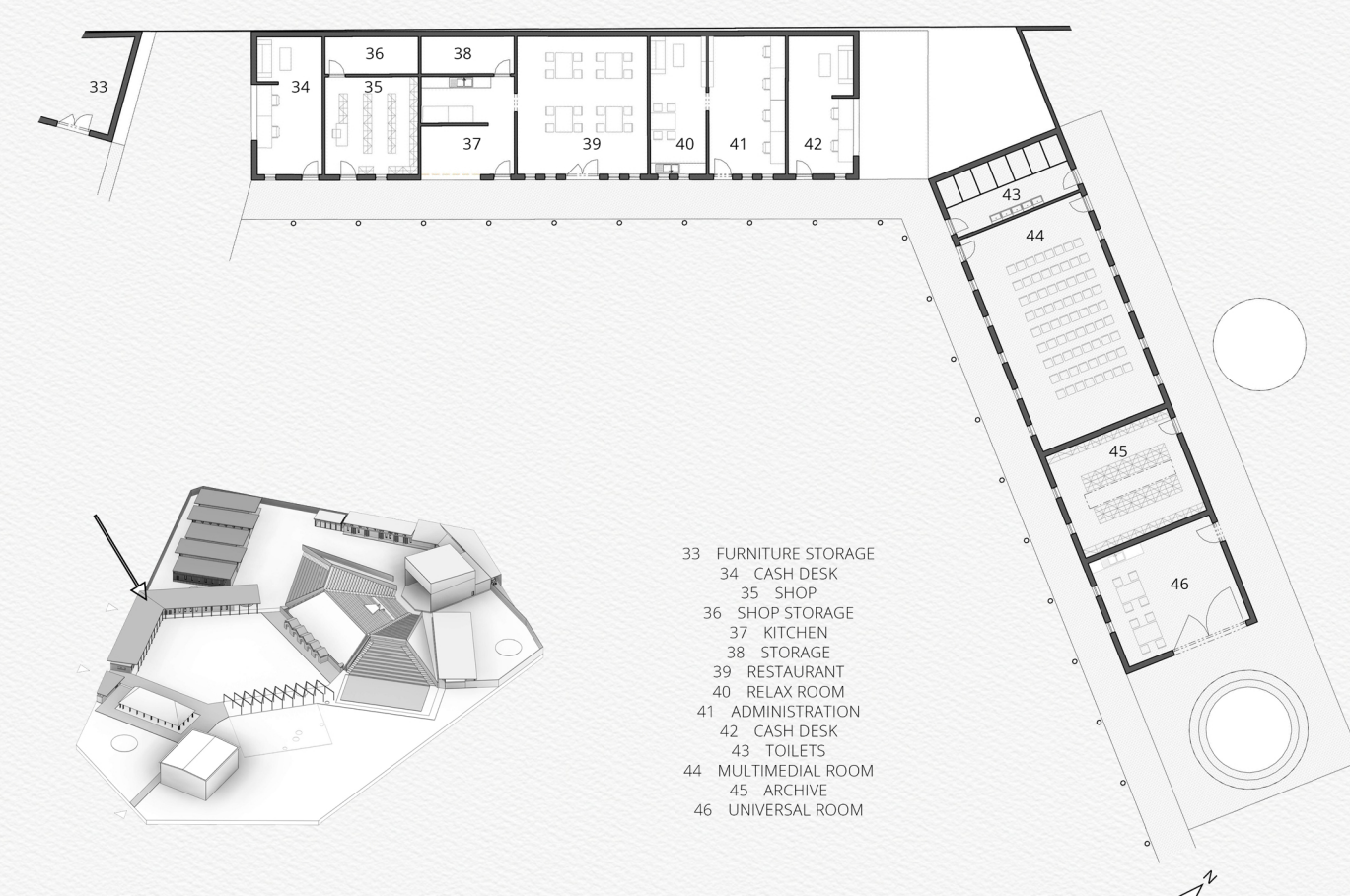


- G CLOAKROOMS FOR ACTORS
- H MAIN AMPHITHEATRE
- K TECHNICAL FIT-OUT, STORAGE
- L EDUCATION AND CLASSROOMS
- M EDU AMPHITHEATRE, STAIR SEATING



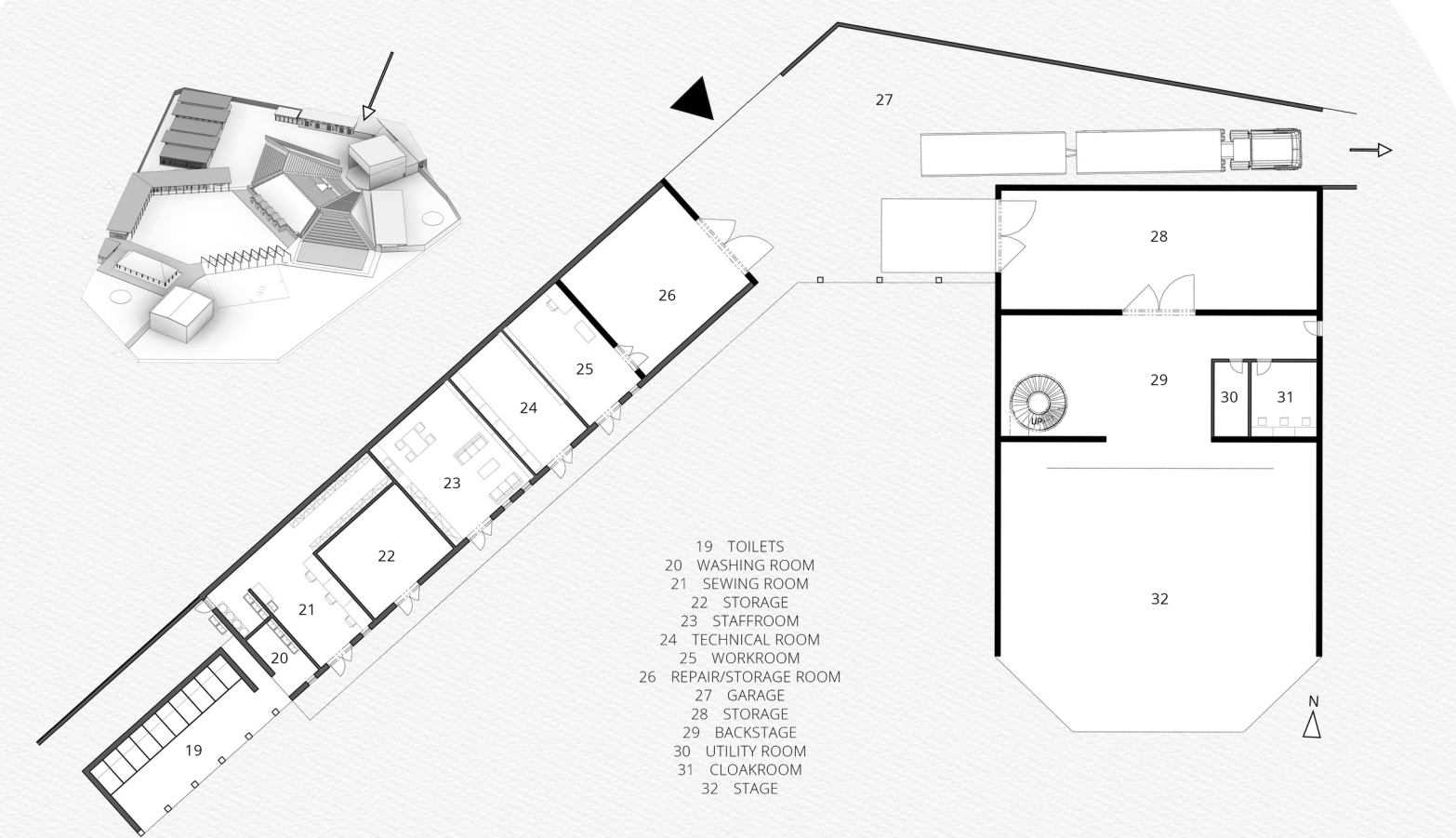
- 1. LOBBY
- 2. RELAX ROOM
- 3. CLOAKROOM
- 4. BOWLING CLOAKROOM
- 5. RECEPTION CLOAKROOM
- 6. COFFEE CLOAKROOM
- 7. TOILETS

PLAN 1:200



- 33. FURNITURE STORAGE
- 34. CASH DECK
- 35. SHOP
- 36. KITCHEN
- 37. KITCHEN
- 38. OFFICE
- 39. RESTAURANT
- 40. RESTAURANT
- 41. ADMINISTRATION
- 42. CASH DECK
- 43. TOILETS
- 44. MULTIMEDIA ROOM
- 45. OFFICE
- 46. UNIVERSAL ROOM

PLAN 1:200



- 18. TOILETS
- 19. WAITING ROOM
- 20. WAITING ROOM
- 21. STORAGE
- 22. STORAGE
- 23. STORAGE
- 24. TECHNICAL ROOM
- 25. WORKSHOP
- 26. RECEPTION ROOM
- 27. STORAGE
- 28. STORAGE
- 29. BRACKETS
- 30. OFFICE ROOM
- 31. CLOAKROOM
- 32. STAGE

PLAN 1:200

