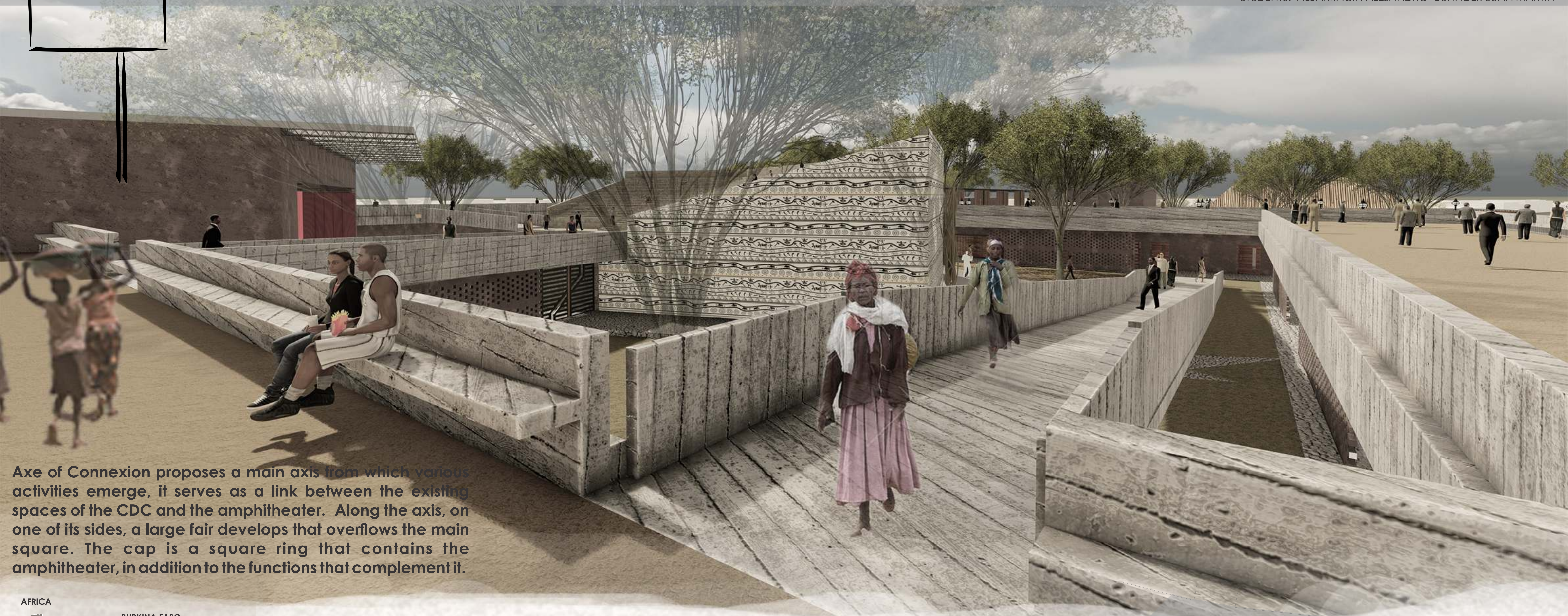


TALLER DE PROYECTO ARQUITECTÓNICO COMBES VII- AXE DE CONNEXION

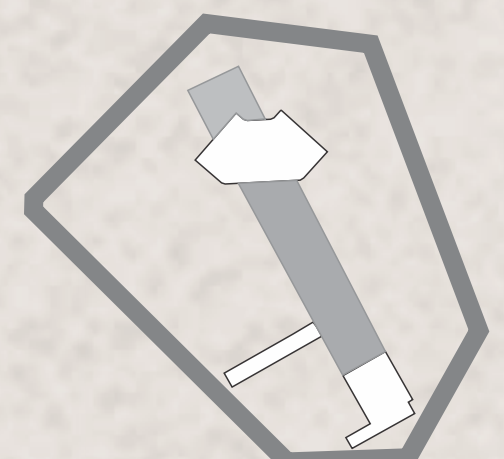
STUDENTS: ALBARRACIN ALEJANDRO- BUNADER JUAN MARTIN



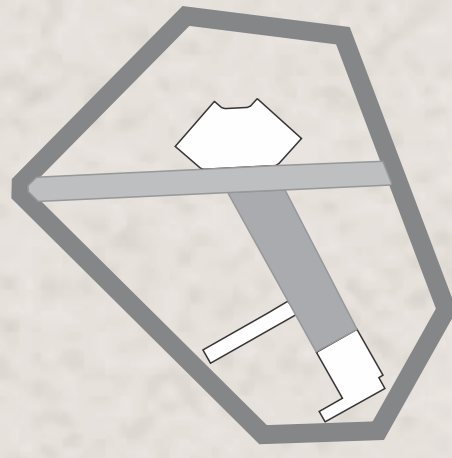
Axe of Connexion proposes a main axis from which various activities emerge, it serves as a link between the existing spaces of the CDC and the amphitheater. Along the axis, on one of its sides, a large fair develops that overflows the main square. The cap is a square ring that contains the amphitheater, in addition to the functions that complement it.



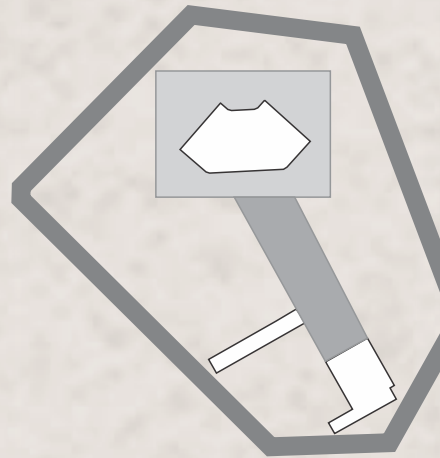
IDEA EVOLUTION



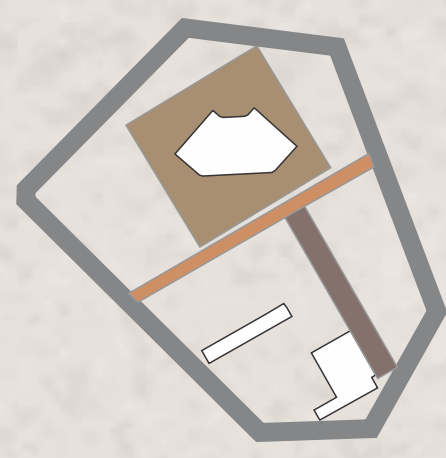
Longitudinal axis



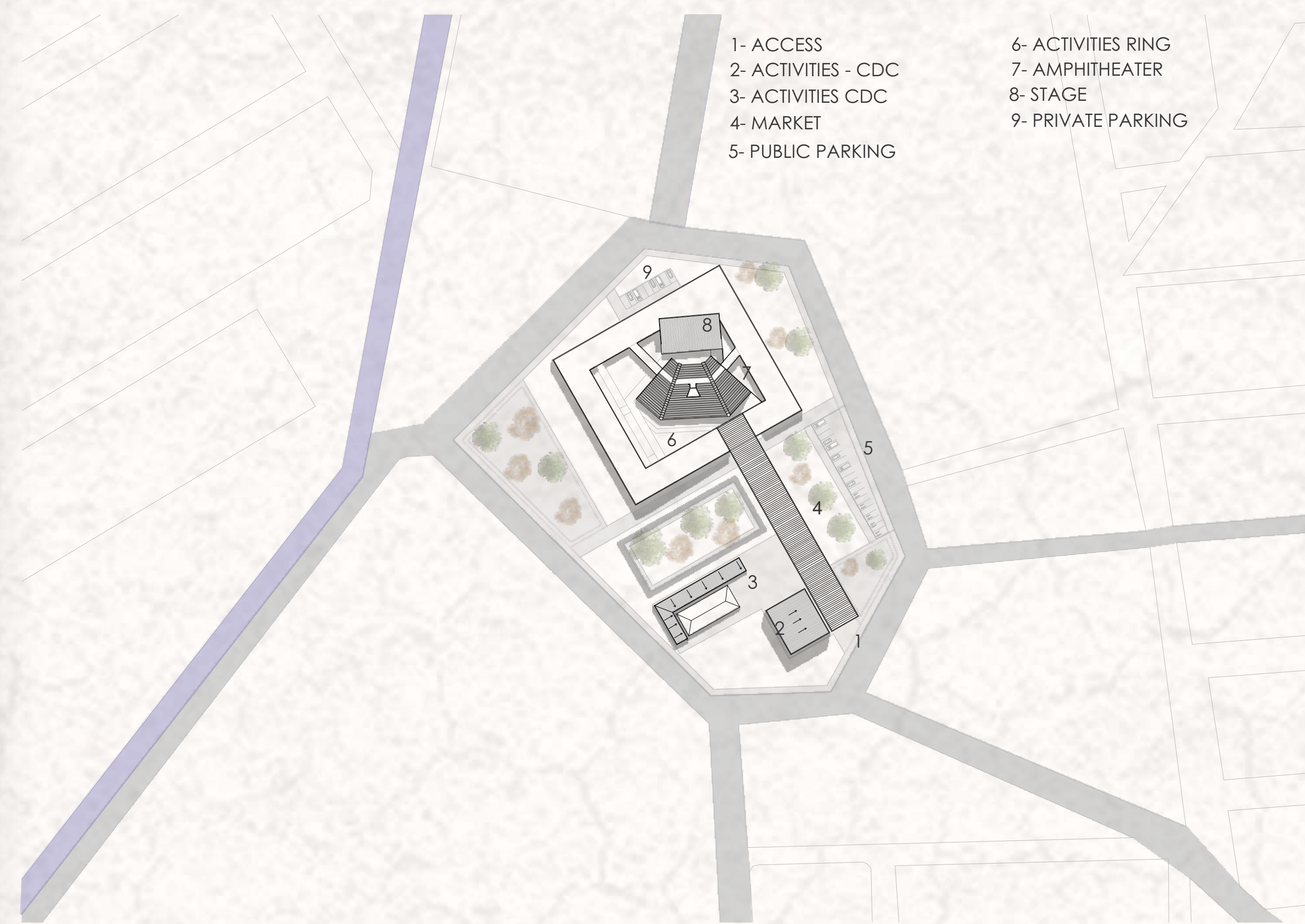
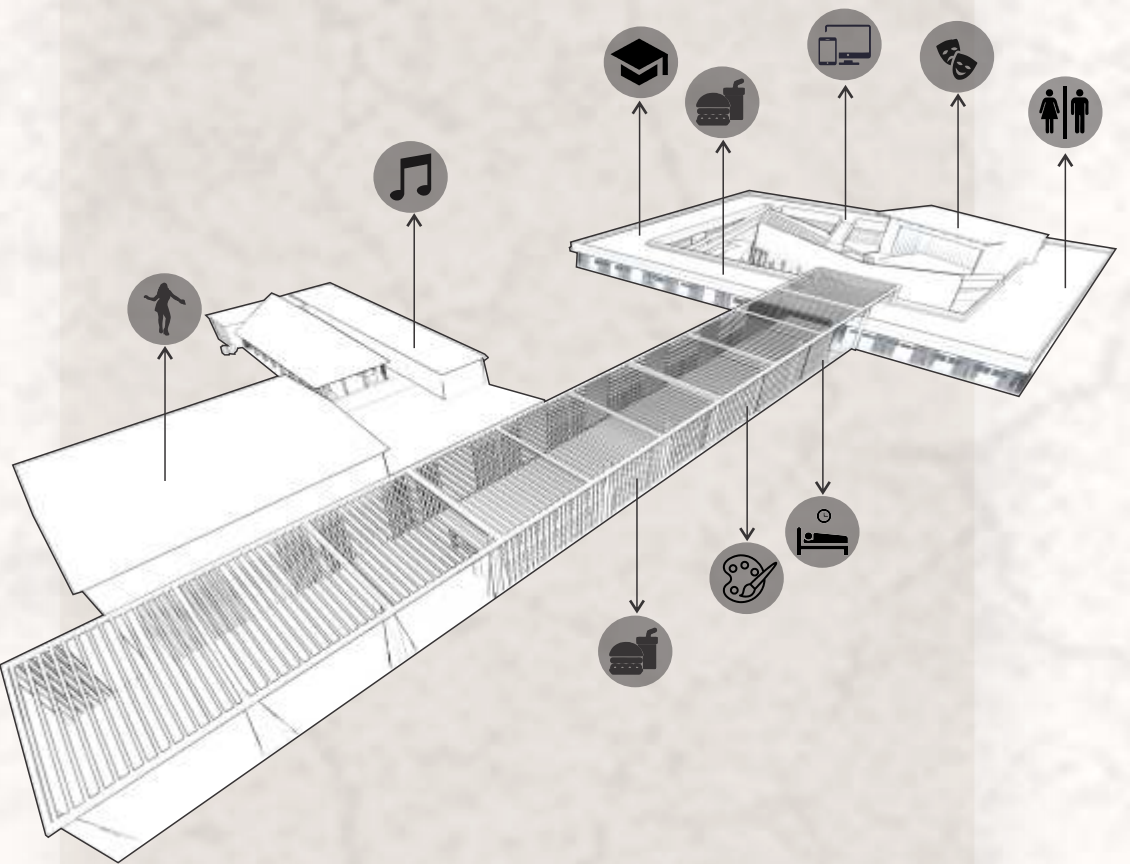
Longitudinal axis + transverse axis



Longitudinal axis + rotated ring



Longitudinal and transverse axis + activities ring



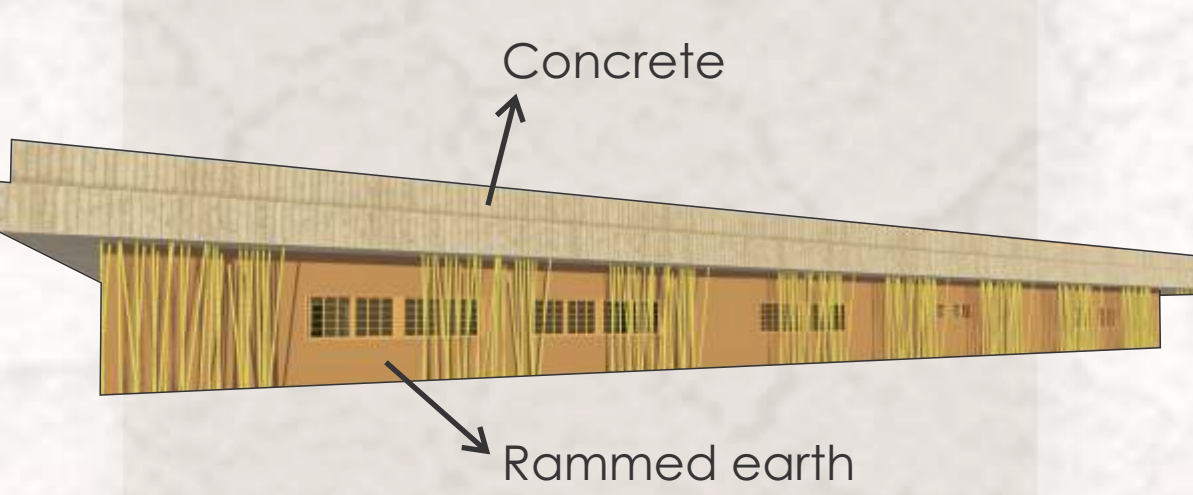
Section A-A



Section B-B



Section C-C



Concrete

Rammed earth

