

ACTIVATING A RUIN

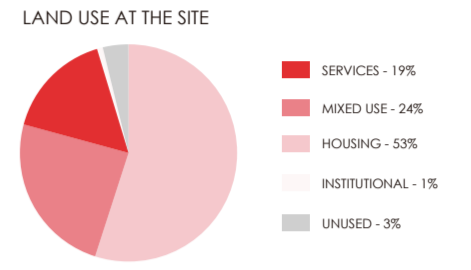
a mixed-use building in a historic site

The project is located in the neighborhood of Boa Vista, and is part of the historic center of city of the Recife, NE Brazil. The area is very diverse in regards to land uses, with a large flow of pedestrians and different means of transport. Due to its historical relevance to the city, it has important formal and informal historical landmarks that maintain its vitality. The building site combines two plots with contrasting rear setbacks, delimited by the Velha Street, Alegria Alley and the neighboring lot.

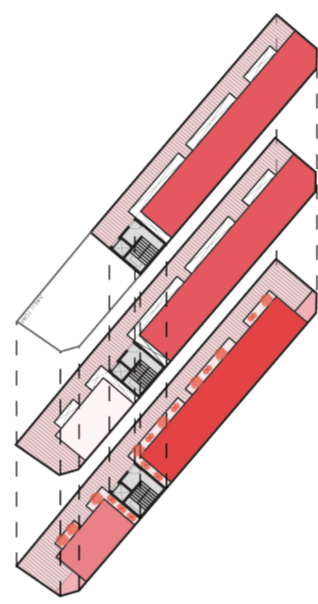
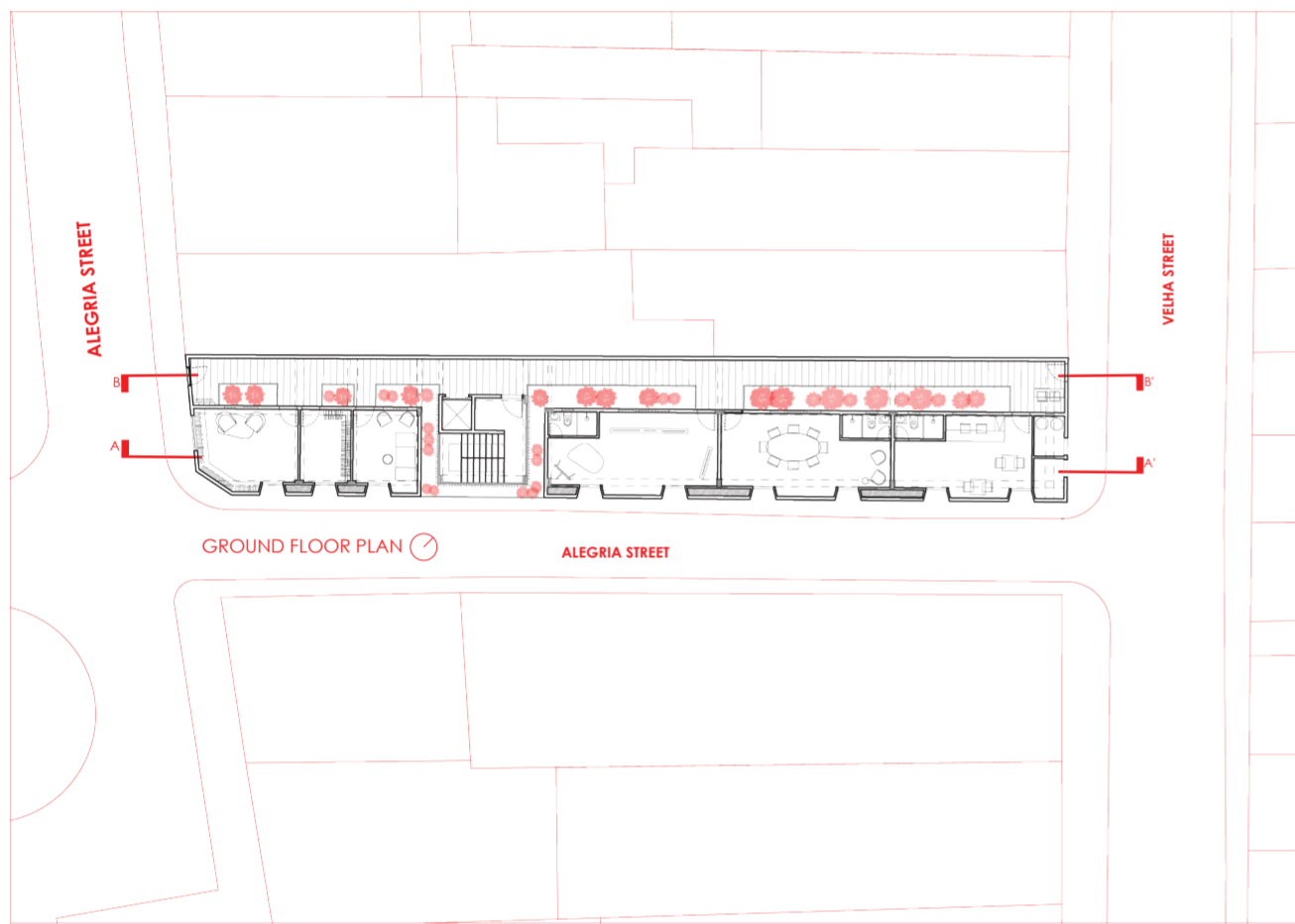
The proposal revitalizes and respects the pre-existing single-story ruin, proposing a new use for it, by expanding the building square footage to house new commercial spaces and residential studios, guaranteeing the flow of people and constant activity to the building.

Based on the concepts established by Andrade Junior (2006), we sought to establish relations of consonance and dissonance with the surroundings, which resulted in a contemporary architecture that integrates with the pre-existing landscape.

Consonance relations are present, therefore, in the definition of the building massing, resulting from the union of the two predominant typologies; in the overall building scale and density, in the rhythm of the façade openings and in the site plan. The only dissonant factor is the color and textures applied to the project, where we tried, through materiality, to clearly differentiate the pre-existence and the new building.



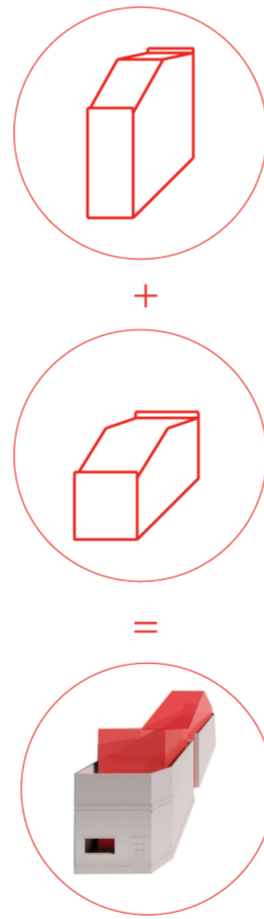
SE ELEVATION: BUILDING MASSING IS COMPOSED OF THREE VOLUMES FINISHED WITH WOOD SLATS



- LEGEND:
- COMMERCIAL SPACE
 - STUDIO APARTMENT
 - STORE SPACE
 - WET AREA
 - CORRIDOR
 - GREEN SPACE
 - TERRACE
 - STAIRS + ELEVATOR CORE



THE PROPOSAL IS A HYBRID OF TWO EXISTING BUILDING TYPOLOGIES



NE CORNER: EXISTING RUIN ON GROUND LEVEL WITH NEW VOLUME WITHIN

