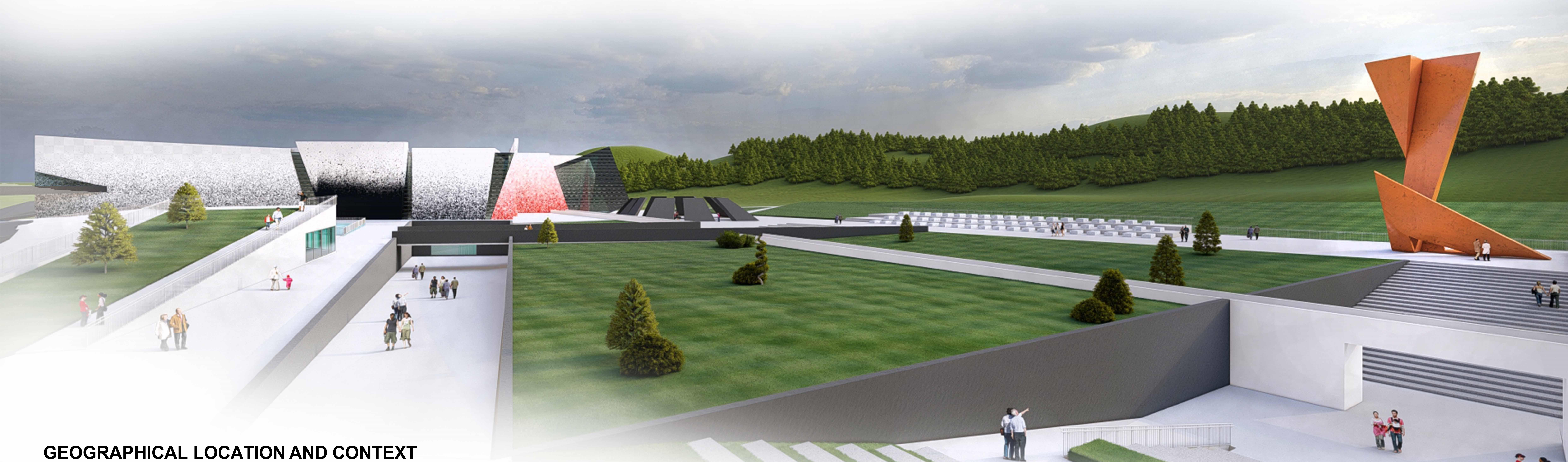




THE POETICS OF EXPRESSIVE FORMS AND SPACES – KOSOVO WAR MUSEUM AND MEMORIAL PARK AS PALIMPSEST OF HISTORICAL-MEMORIAL COMPLEX IN PREKAZ



GEOGRAPHICAL LOCATION AND CONTEXT



Europe/Kosovo



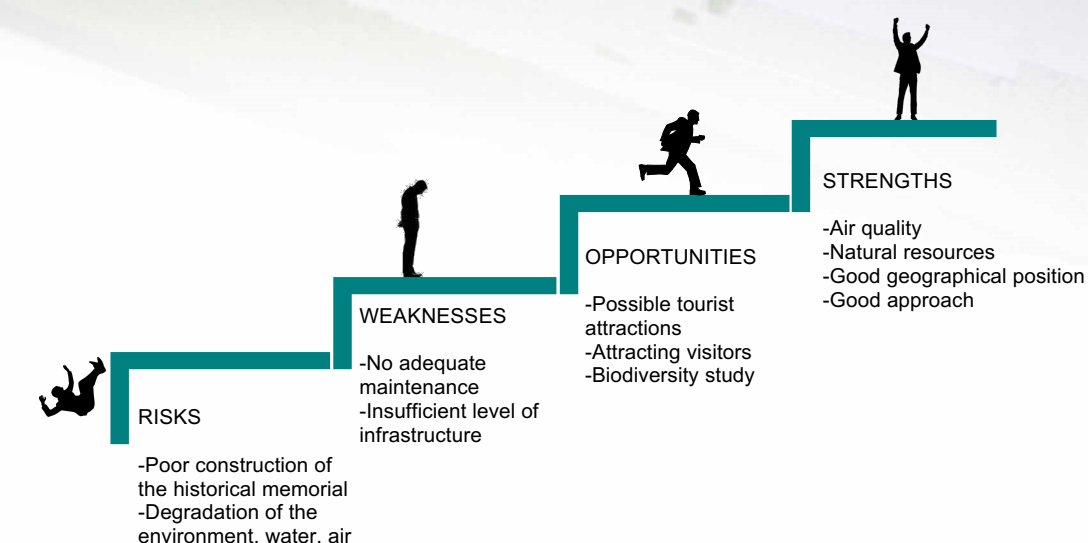
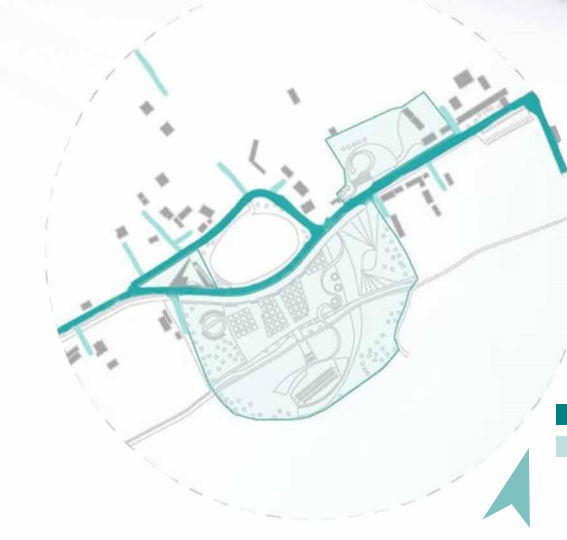
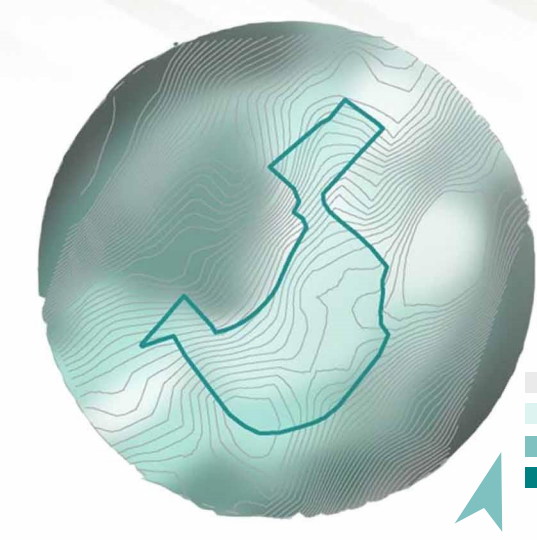
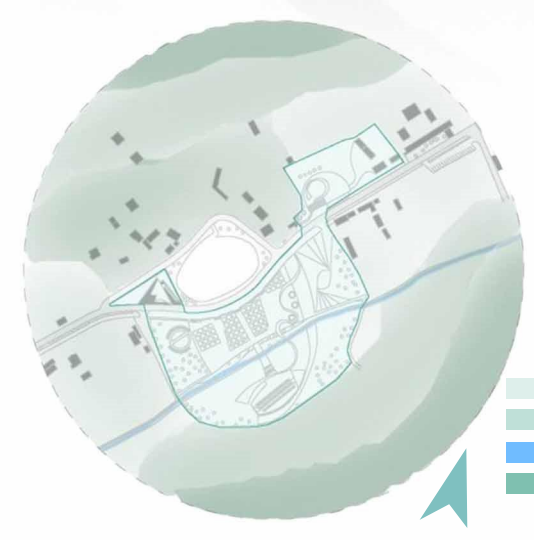
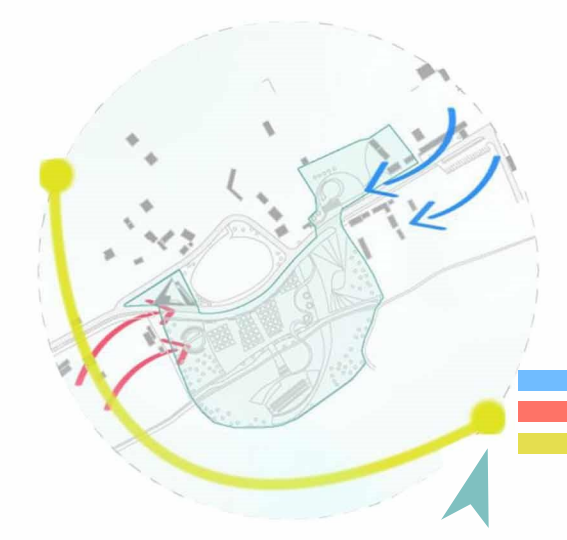
Skenderaj/Prekaz



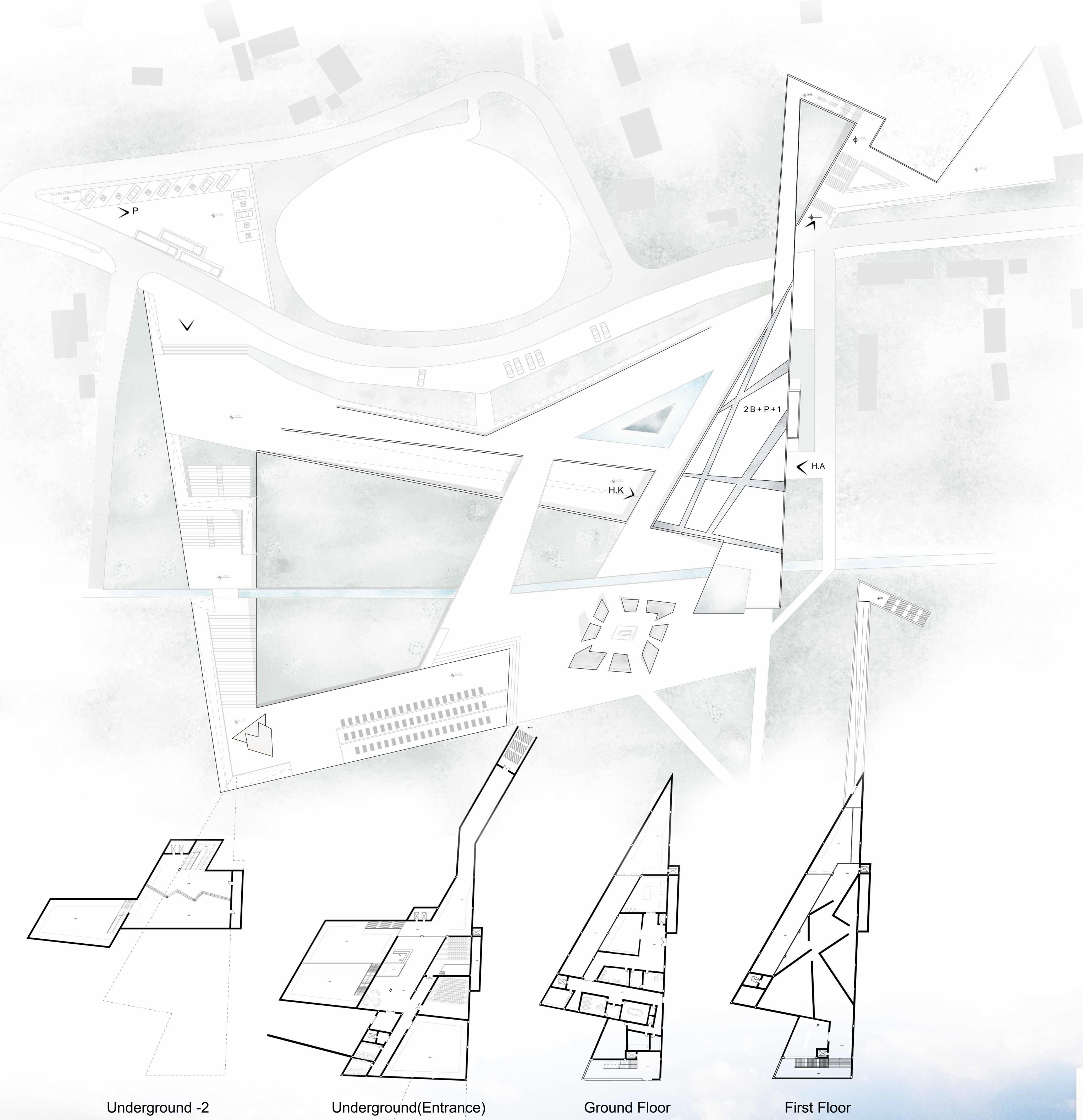
Infrastructure-pedestrians



Infrastructure



MASTERPLAN



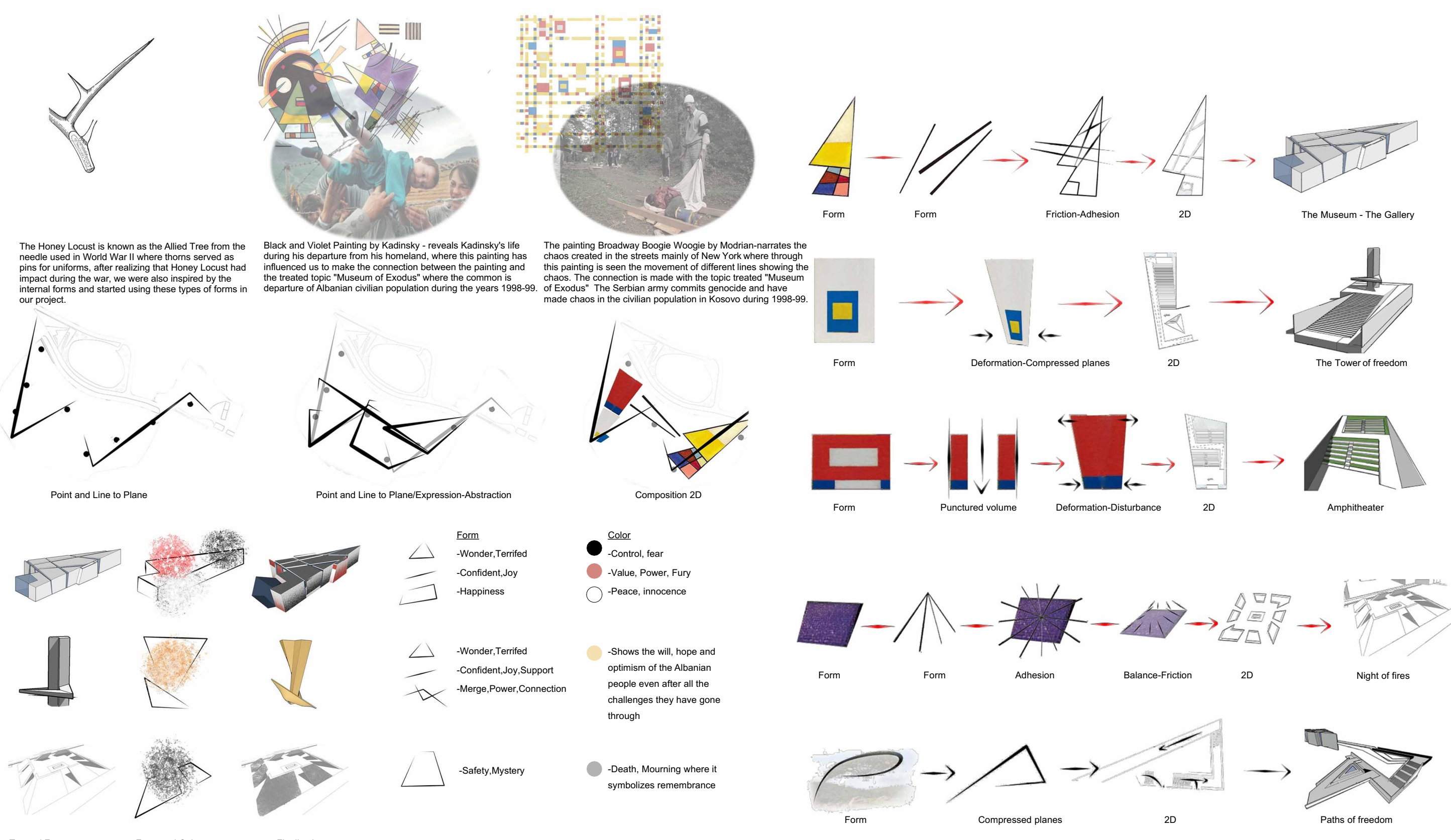
Underground -2

Underground(Entrance)

Ground Floor

First Floor

CONCEPT

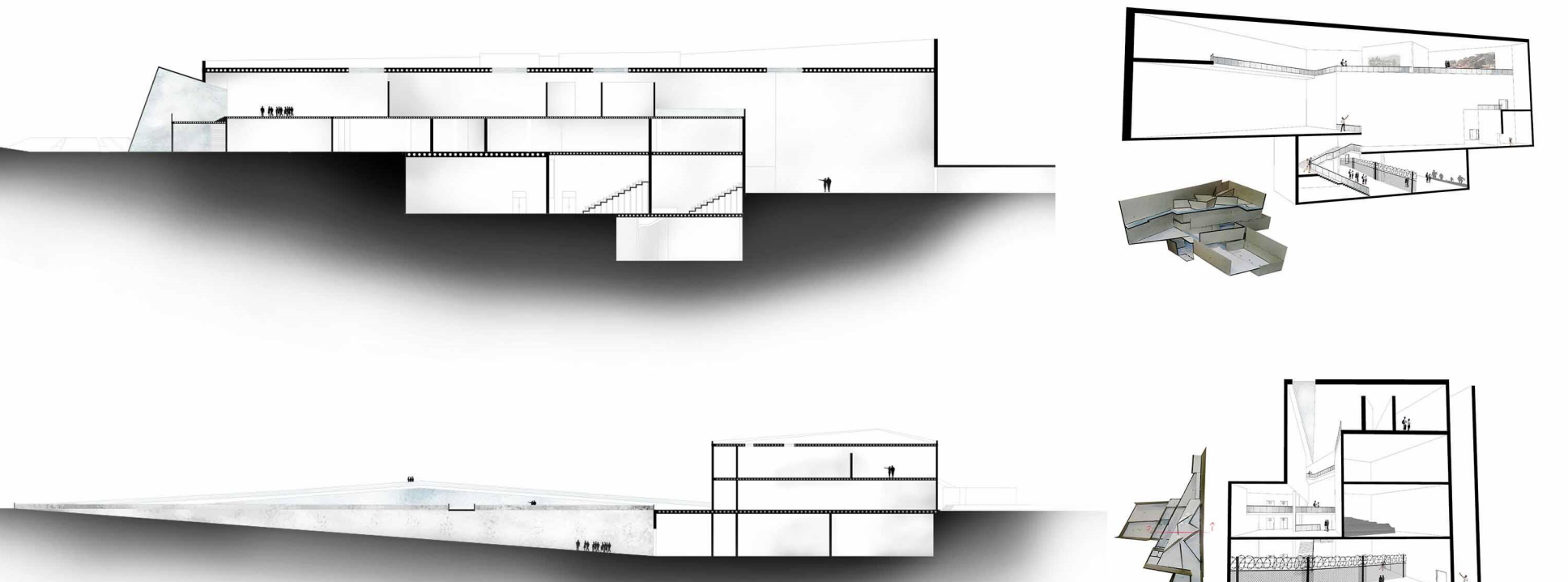


The Honey Laced is known as the Albat Tree from the needle used in World War II where it served as pins for uniforms after realizing that Honey Laced had impact during the war, we were also inspired by the internal forms and spaces using these types of forms in our project.

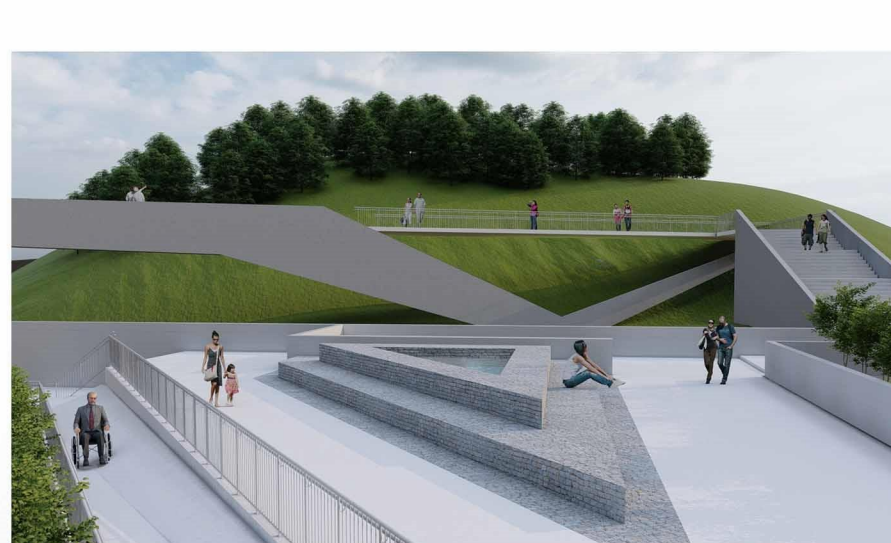
Black and White Painting by Kadir Toprakci - reveals Kadir's life during his departure from his homeland where the painting has influenced us to make the connection between the painting and the treated topic "Museum of Exodus" where the common is the departure of Albanian civilian population during the years 1998-99. The Serbian army controls genocide and have made chaos in the civilian population in Kosovo during 1998-99.

SECTION IN CONTEXT

SECTION IN PRESPECTIVE



Atmospheric Interior - Exhibition hall "HOPE"



Atmospheric External - "Paths of freedom"

TERRAZZO
Terrazzo is a composite material, cast in place or precast, which is used for floor and wall treatments. It consists of pieces of marble, quartz, granite, glass or any other suitable material, cast with a cement bond (or chemical bonding), polymer (for physical bonding), or a combination of both. Metal strips often divide sections, or changes in color or material into a pattern.

Triangle Stained Laminated Glass
Clear PVB laminated glass sheet thickness 4+ 0.76+4mm porcelain white frosted blue bronze Euro grey green dark grey glass

