

Idea

The aim idea of this work is to design the concept of a green corridor in the southern part of Bratislava, situated between districts of Jarovce and Rusovce. We focused on the restoration of landscape identity, but we are also completing the urban structure. This area has great potential because it is located near the Danube River and floodplain forests.

Concept - larger territory

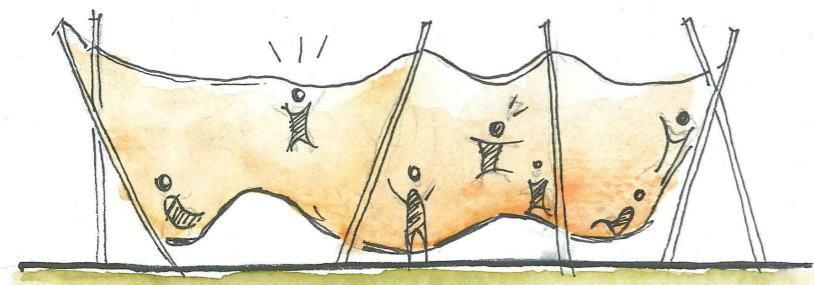
In a larger concept, we ideologically solved possible connections with Austria via Kopčianska Street towards Kittsee. The biggest intervention in the work is the design of the bypass arm of the Danube. Based on a "SWOT" analysis, we design a forest cemetery near reservation Bažantnica. In the design, we respect the uniqueness of the Sysľovské fields, and therefore several biocorridors pass through the territory, which interconnect the ecosystem.

Traffic concept

The traffic solution is based on the existing traffic skeleton. The new structure follows on from the planned Rusovce bypass and the railway line from Petržalka to Rajka (HU). We design a railway station at the beginning of the solved area. From this area, pedestrians have the opportunity to get to the sports and recreation area with a multifunctional stadium, a large swimming lake and civic amenities ideal for temporary housing. Public transport stops are designed for a walking distance of 300 - 500 m. Near the area is the Eurovelo cycle route 6 from Berg to Čuňovo.

Functional concept

In the design is the main residential function in family houses and small multi-storey apartment buildings. The creation of a new central space required a diverse range of commercial as well as non-commercial civic amenities (shops, hotels, schools, ...). Residents of the new structure also have recreational and sports activities at their disposal. The main building of the botanical garden includes greenhouses, shops, a cinema, a library and is directly connected to the scientific research center.



Composition concept

The main compositional axis is the object of the botanical garden with a green roof. The axis is finished on both sides with an accent in the form of a stadium and an aquarium building. The main compositional axis is followed by the public spaces. Civic amenities with housing is created in attractive courtyards that culminate in a small harbor on a green waterfront. The height dominants are connected with the main building of botanical garden and form the background for scientific, congress and administrative purposes.

Vegetation concept

The most attractive part of the area is an organic botanical garden. There are various themed gardens from local flora to subtropical plants located in greenhouses. We also design a mini botanical garden in the area, which is primarily intended for children. This mini botanical garden contains a game and educational part focused on fauna and flora. Part of the area is a large aquarium, where you can find freshwater and marine animals. The main building offers space for science, research and space for the nearby university campus. Behind the student campus there are large fields, orchards, meadows and fast-growing trees. It is possible to get across the highway via a footbridge and watch the drops in their natural environment.

