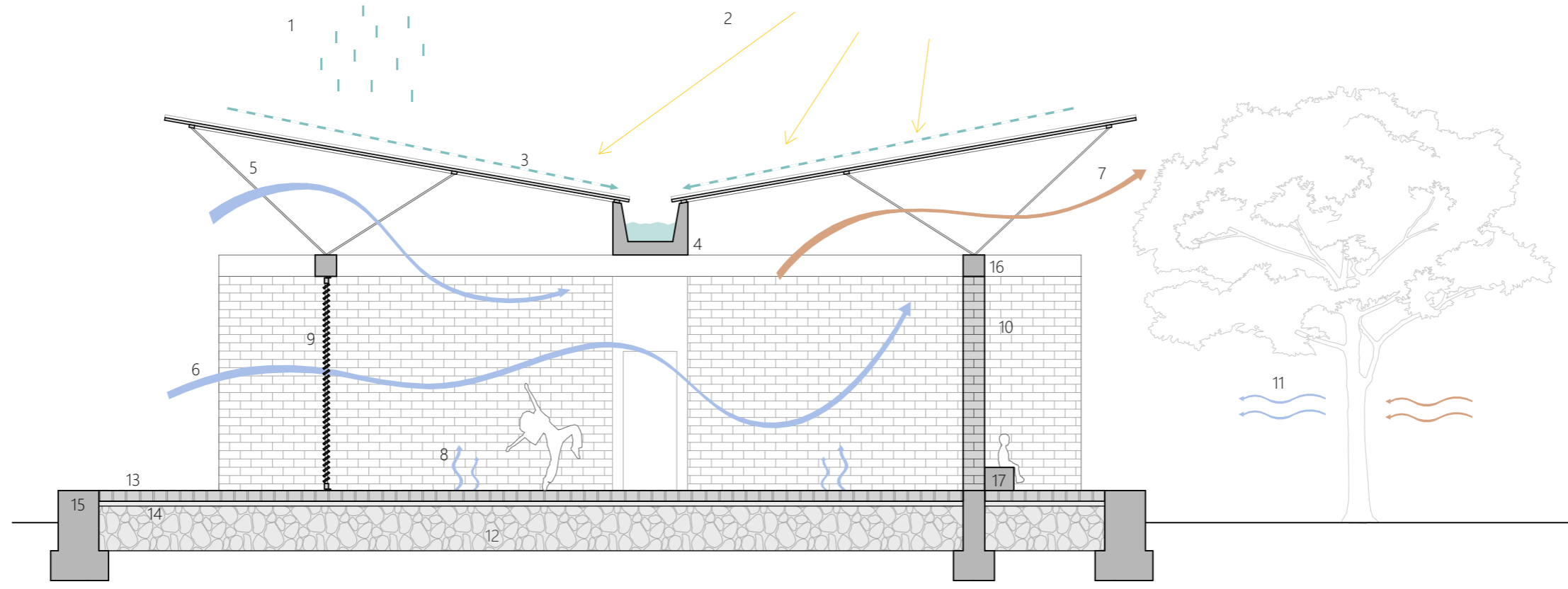


_ bioclimatic scheme



- | | | | | |
|-------------------|--|----------------------------------|--|--|
| 1. Rainwater | 5. Cold roof
roof membrane of corrugated metal
sheets, griders of welded reinforcing steel | 7. Heat dissipation | 11. Tree cooling | 15. Concrete pedestal
and continuous foundation |
| 2. Sunbeam | | 8. Cool off from de soil | 12. Clay and stone filling | 16. Ring beam reinforced concrete |
| 3. Water flow | 6. Wind passing through
- the roof
- the shutters door | 9. Wooden shutter doors | 13. Terrace covering in clay bricks | 17. Concrete bench |
| 4. Concrete drain | | 10. Clay walls made by community | 14. Compressed clay - traditionally stamped clay | |