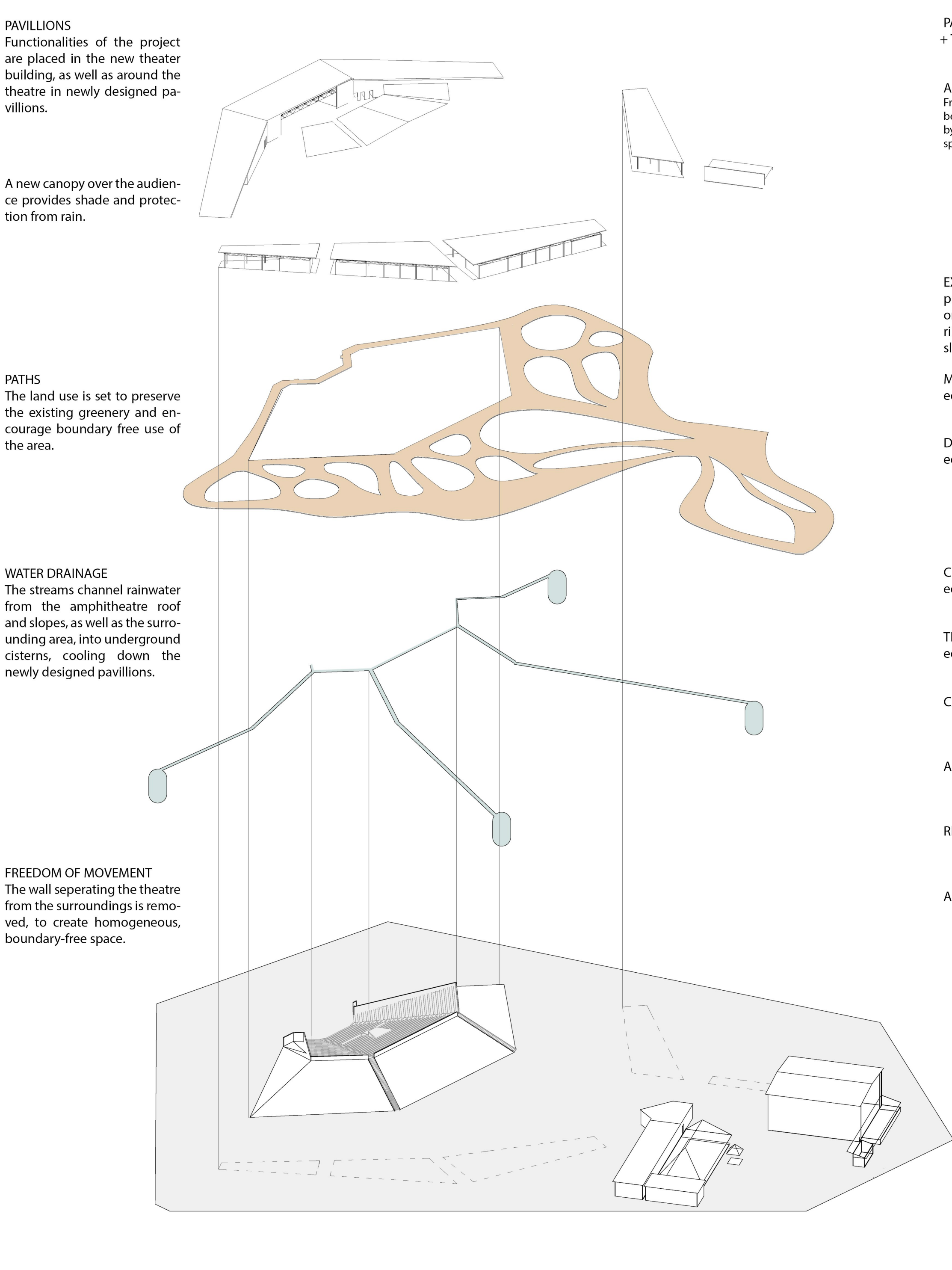


TWO FACES OF THE THEATRE

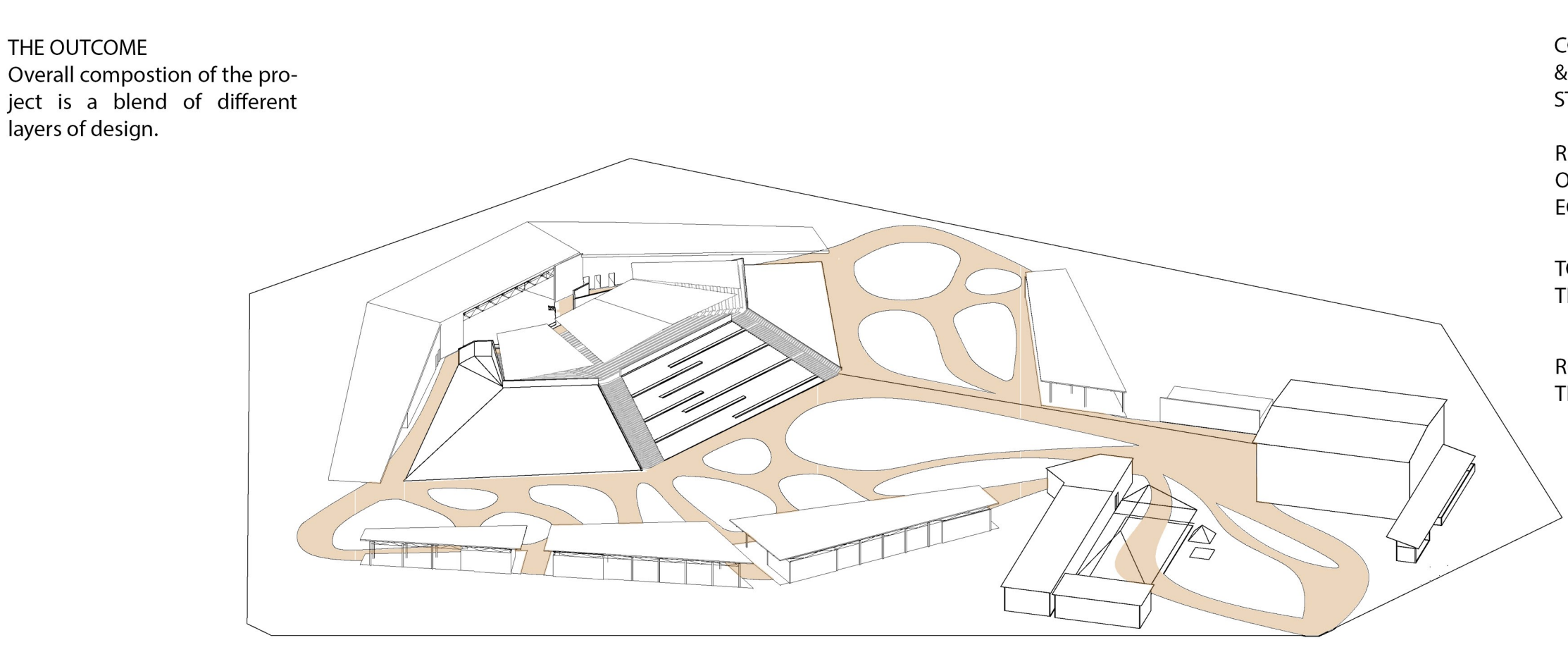
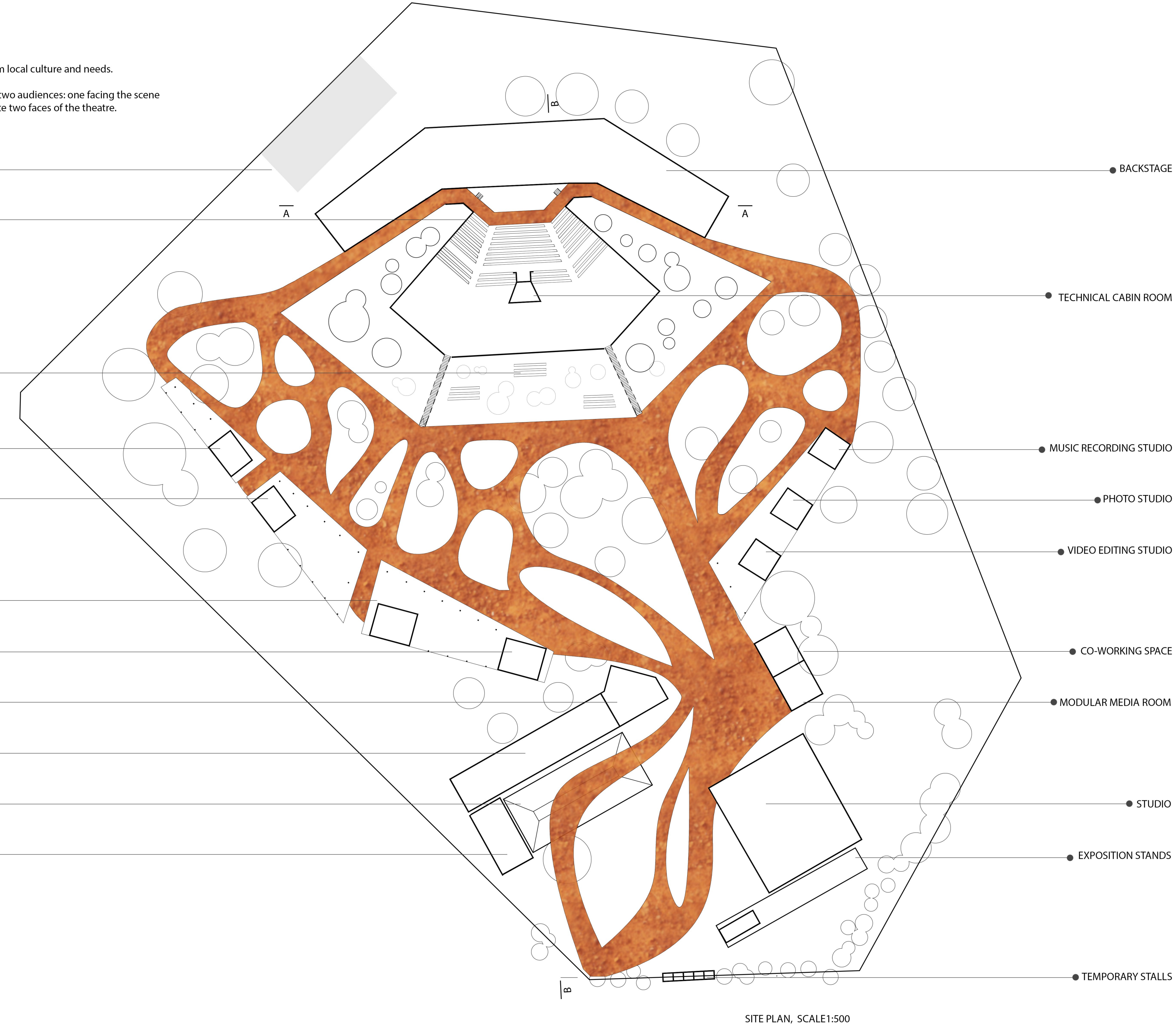
RÉHABILITATION OF THE THÉÂTRE POPULAIRE DÉSIRÉ BONOGO

The conceptual idea of the project is focused on the existing amphitheatre and its potential, originating from its geometrical and functional qualities, with the use of water, local materials and inspiration from local culture and needs.

Formed as a crescent elevation, the amphitheatre juxtaposes two slopes – the internal auditorium, as well as the external slopes, offering the view on the surroundings. Therefore, in practice, the building holds two audiences: one facing the scene on the interior, and the other offering a perspective on the surroundings. The idea of the project is to take advantage of the existing audience, as well as the potential of the hill overlooking the area – to create two faces of the theatre.



- **PARKING SPACE + TRUCK ACCESS**
- **ACCESS FOR DISABLED**
Front of the auditorium is designed to be accessible for people in wheelchairs by providing flat entrance and free space in front of the stage.
- **EXTERIOR AUDIENCE**
project contains seats and paths on the other side of the auditorium to take advantage of the slope on both its sides.
- **MUSIC**
educational space
- **DANCE**
educational space
- **CIRCUS AND PUPPETS**
educational space
- **THEATRE**
educational space
- **CANTEEN**
- **ACCOMMODATION**
- **REHEARSALS**
- **ADMINISTRATION**



- **CONSTRUCTION & STORAGE FOR STAGE SETS**
- **REPAIR & STORAGE OF TECHNICAL EQUIPMENT**
- **TOILETS FOR THE AUDIENCE**
- **ROOM FOR TECHNICIANS**

