

PROJECT IDEA

OBSERVING BURKINA FASO'S CAPITAL OUAGADOUGOU, THE FIRST THING THAT CATCHES YOUR EYE IS THE GRID OF RECTANGULAR, SIMPLE GEOMETRIC SHAPES. WHEN YOU LOOK DIRECTLY AT THE ARCHITECTURAL FORMS, YOU WILL SEE THAT THE BUILDINGS ARE ALSO SIMPLE, POOR, MONOTONOUS, IN SHADES OF SAND AND DESERT. THIS IS AN ENVIRONMENT WHERE YOUR THEATER COMPLEX IS LOCATED, WHICH SEEMS TO BE OUT OF CONTEXT AND DOESN'T HAS CONTACT WITH THE URBAN ENVIRONMENT.

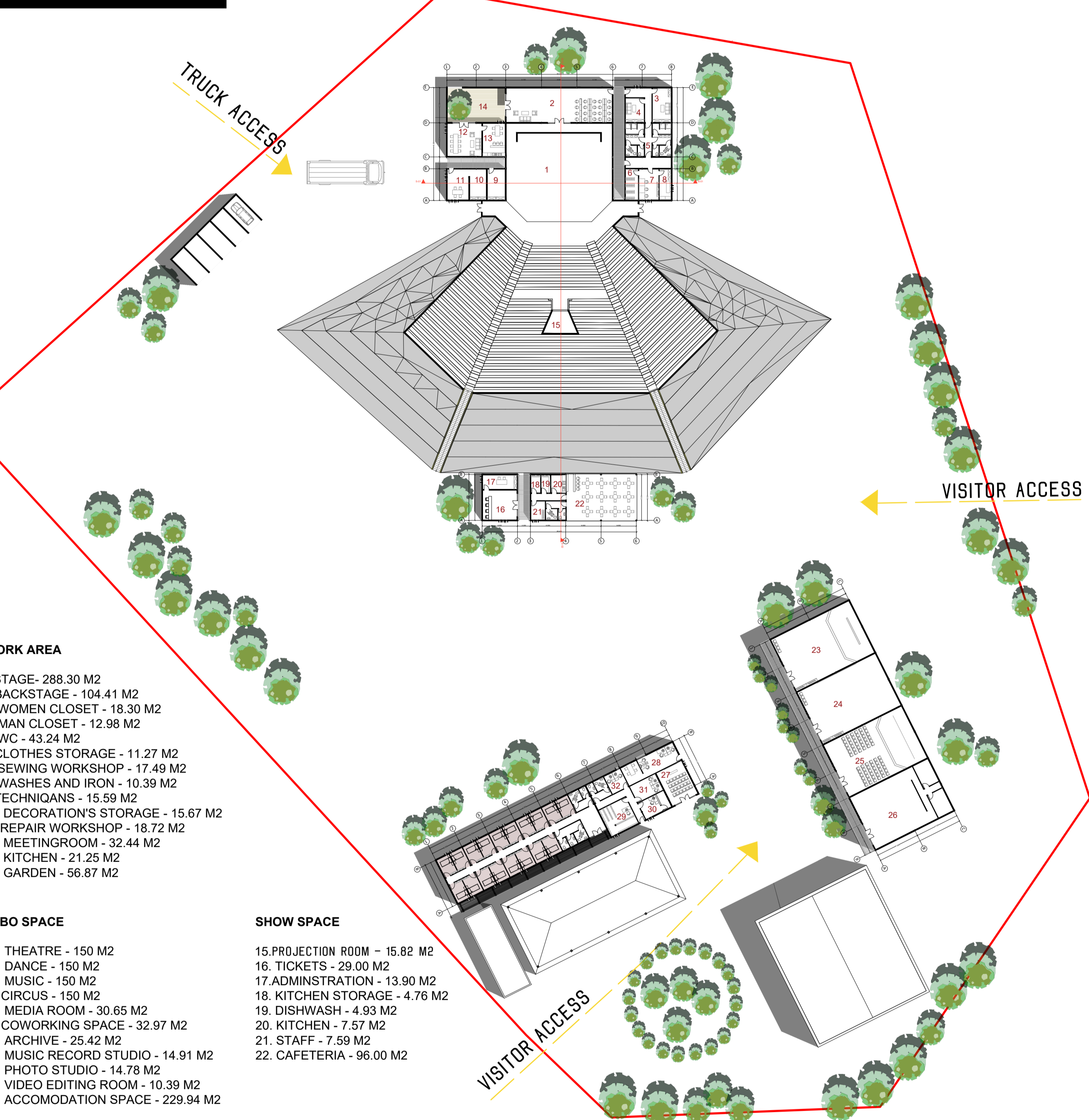
AFTER ANALYSE THE CURRENT SITUATION, I DECIDED THAT THE RENOVATED THEATER SHOULD HAVE NEW CONNECTIONS WITH THE EXISTING AREA. IT WILL HELP TO MAKE THEATER EASY TO ACCESS. IT IS ALSO IMPORTANT THAT THE THEATER AND THE CDC APPROACH TO EACH OTHER, BECAUSE THESE TWO COMPLEXES HAVE ALMOST THE SAME FUNCTIONS, THIS IS WHY NEW SPACES ARE INTEGRATED WITH BOTH.

AFTER CONSIDERING THE TYPICAL CLIMATIC CONDITIONS AND THE EXISTING ENVIRONMENT, I DECIDE TO MAKE THE ARCHITECTURE SIMPLE, WITH MINIMALISTIC SHAPES, SMALL OPENINGS, SUN SHADES, GREEN ROOF AND LOCAL MATERIALS, WHICH WILL FIT NEW BUILDINGS INTO THE CONTEXT HARMONIOUSLY AND MAINTAIN A DIFFERENT LOOK.

DESIGN SKETCHES



FLOOR PLAN 1:500



- WORK AREA**
- 1. STAGE - 288.30 M2
 - 2. BACKSTAGE - 104.41 M2
 - 3. WOMEN CLOSET - 18.30 M2
 - 4. MAN CLOSET - 12.98 M2
 - 5. WC - 43.24 M2
 - 6. CLOTHES STORAGE - 11.27 M2
 - 7. SEWING WORKSHOP - 17.49 M2
 - 8. WASHES AND IRON - 10.39 M2
 - 9. TECHNIQANS - 15.59 M2
 - 10. DECORATION'S STORAGE - 15.67 M2
 - 11. REPAIR WORKSHOP - 18.72 M2
 - 12. MEETINGROOM - 32.44 M2
 - 13. KITCHEN - 21.25 M2
 - 14. GARDEN - 56.87 M2

- LABO SPACE**
- 23. THEATRE - 150 M2
 - 24. DANCE - 150 M2
 - 25. MUSIC - 150 M2
 - 26. CIRCUS - 150 M2
 - 27. MEDIA ROOM - 30.65 M2
 - 28. COWORKING SPACE - 32.97 M2
 - 29. ARCHIVE - 25.42 M2
 - 29. MUSIC RECORD STUDIO - 14.91 M2
 - 30. PHOTO STUDIO - 14.78 M2
 - 31. VIDEO EDITING ROOM - 10.39 M2
 - 32. ACCOMODATION SPACE - 229.94 M2

- SHOW SPACE**
- 15. PROJECTION ROOM - 15.82 M2
 - 16. TICKETS - 29.00 M2
 - 17. ADMINISTRATION - 13.90 M2
 - 18. KITCHEN STORAGE - 4.76 M2
 - 19. DISHWASH - 4.93 M2
 - 20. KITCHEN - 7.57 M2
 - 21. STAFF - 7.59 M2
 - 22. CAFETERIA - 96.00 M2

3D VISUALISATIONS



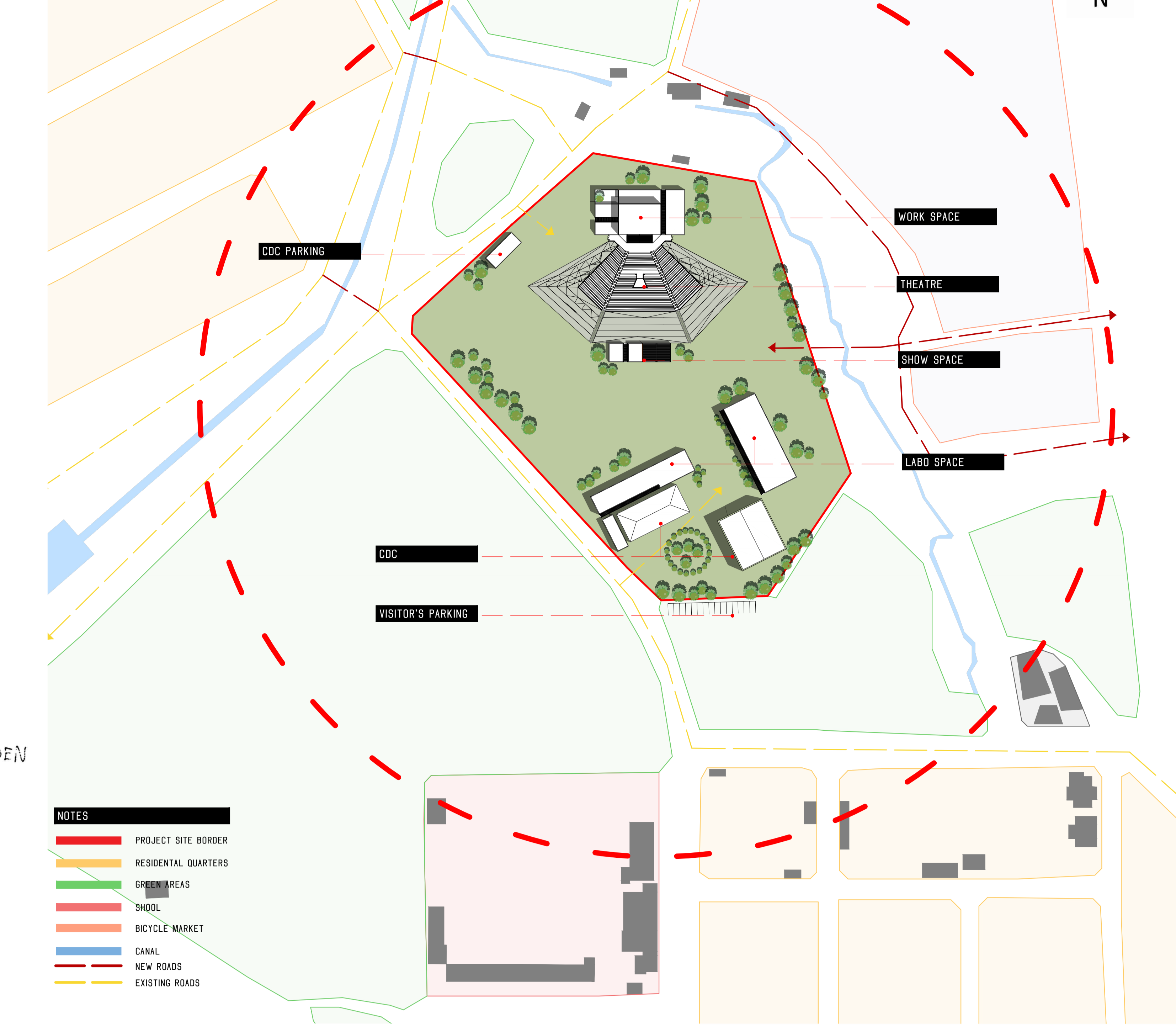
TECHNOIQAL INFORMATION

SOLID SHAPES AND A GREEN ROOF PROTECT THE BUILDING FROM OVERHEATING. THERE ARE ALSO SHADES NEAR THE BUILDINGS AND BETWEEN THEM TO PROTECT FROM THE SUN RAYS. THE WALLS OF THE BUILDINGS ARE MADE OF LOCAL BRICKS AND COVERED WITH WHITE CONCRETE. THERE ARE SUN SHADES ON THE WINDOWS TOO, THAT PROTECT INTERIOR FROM HEATING.

LOCATION

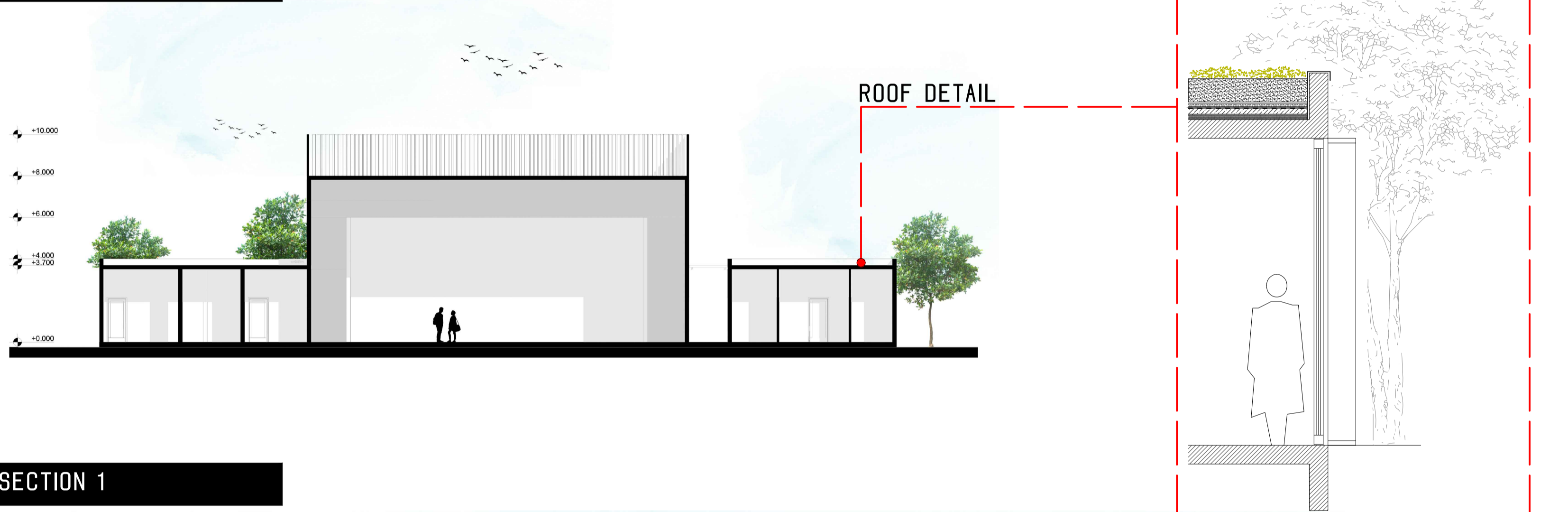


MASTERPLAN

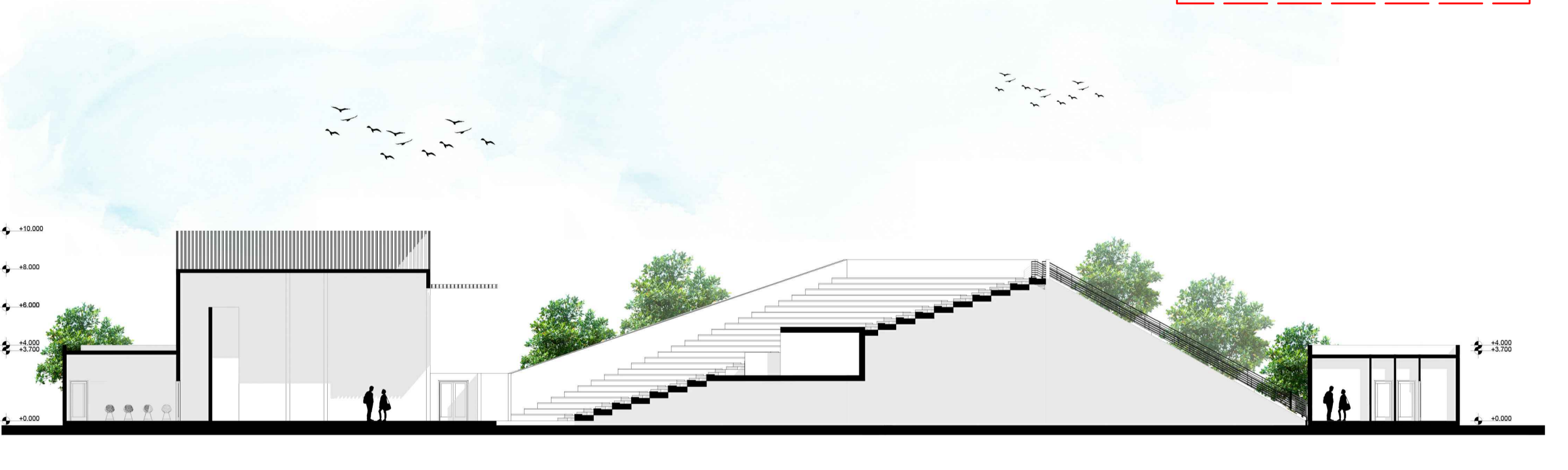


- NOTES**
- PROJECT SITE BORDER
 - RESIDENTIAL QUARTERS
 - GREEN AREAS
 - SHOOL
 - BICYCLE MARKET
 - CANAL
 - NEW ROADS
 - EXISTING ROADS

SECTION 1



SECTION 1



BUILDING MATERIALS

