

# THEATRE POPULAIRE DESIRE BONOGO OUAGADOUGOU- BURKINA FASO

## SITE LOCATION



THE LOCATION OF THE SITE IS AT OUAGADOUGOU, IN BURKINA FASO, WEST AFRICA, WHICH HAS A HOT AND HUMID TEMPERATURE. IT HAS AN AVERAGE TEMPERATURE BETWEEN 30°- 40°. THE CLIMATE IS HOT SEMI-ARID AND CLOSELY BORDERS WITH TROPICAL WET AND DRY.

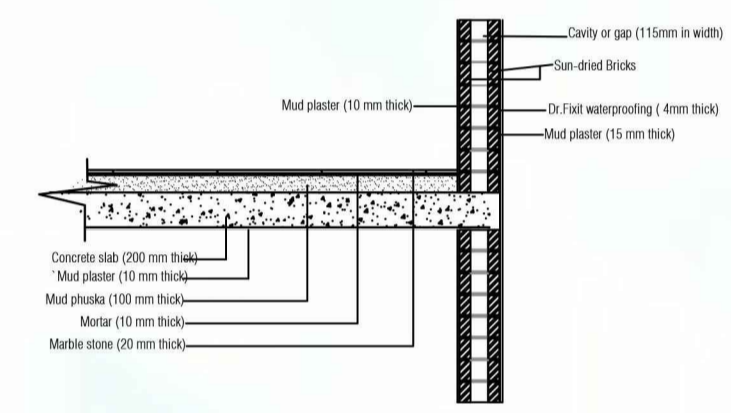
## SITE



THE CDC COMPLEX CONSISTS OF THE AMPHITHEATER THEATRE POPULAIRE DESIRE BONOGO, A THATCHED PAVILION FOR MEETINGS AND REPETITIONS OR SHOWS, AN ACCOMMODATION BLOCK WITH A CAPACITY OF 18 BEDS, A CANTINE, A SPACE FOR A GALLERY, AN OFFICE BLOCK FOR ADMINISTRATION AND MANAGEMENT TEAM, A PARKING, A VAST COURTYARD, GARDENS AND A GRAND STUDDO.

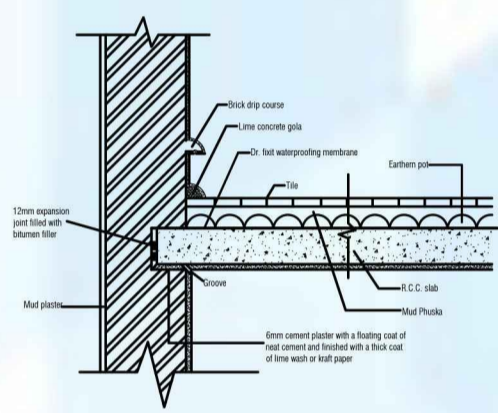
## CLIMATIC RESPONSIVE

### 1. USING RED TRAP BRICK BOND



STRENGTH OF WALL IS NOT COMPROMISED, IT REMAINS SAME AS TRADITIONAL MASONRY WALL. CAVITY INDUCED IN WALL PROVIDES BETTER THERMAL INSULATION, RESULTING IN COOLER INTERIORS DURING SUMMER AND WARMER INTERIORS DURING WINTER.

### 2. USING EARTHER POTS ON SLAB



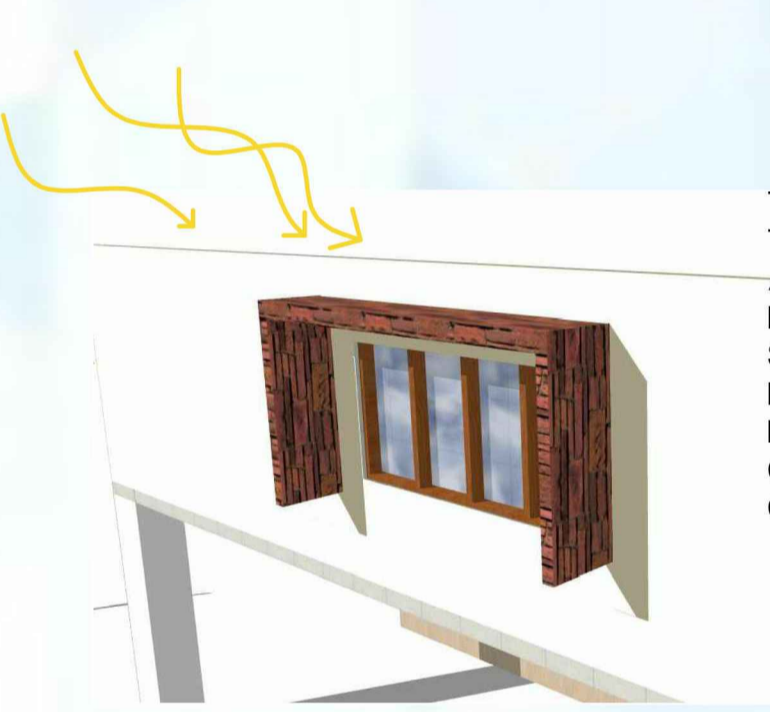
USING EARTHER POTS ON THE PRECAST SLAB ACT AS ROOF INSULATION AND INTERIOR DOESN'T GET WARMER.

### 3. CROSS VENTILATION USING BRICK JALI



JALIS ARE A GREEN TOOL CAN HELP YOU REDUCE THE ENERGY LOAD OF COOLING AND THE COSTS ASSOCIATED WITH IT. THE APERTURES IN THE JALI EFFICIENTLY LESSEN THE INGRESS OF HEAT IN THE DAYTIME. THEY ALSO BLOCK THE ENTRY OF DIRECT SUNLIGHT, MAKING FOR PLEASANT INTERIORS.

### 4. PASSIVE SOLAR CONCEPT BY USING SHADING DEVICE



THE PASSIVE SOLAR BUILDING SYSTEM HAS THE ADVANTAGE OF BLOCKING ALMOST 99.9% OF THE ULTRAVIOLET RADIATION ENERGY. PREVENTING THIS WOULD SAVE THE INTERIOR FABRICS AS WELL AS DECOR AND MAKE THEM LONG LASTING. SUMMER IS MADE COOLER AND COMFORTABLE - IT KEEPS THE INTERIOR COOL DURING THE HOT SEASON.

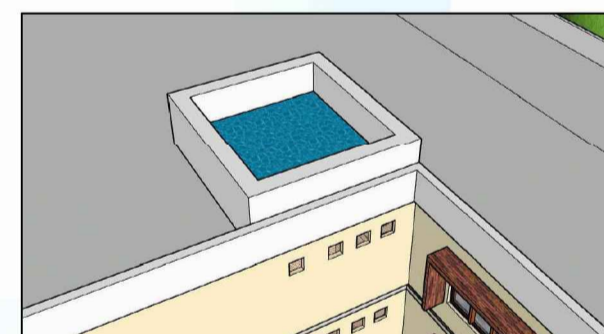
### 5. USING MUD AS PLASTER FOR INSULATION

THE USE OF MUD PLASTERS MAINTAINS THE BREATHING QUALITY OF THE WALL MADE OF NATURAL MATERIALS, ENHANCING THE THERMAL COMFORT BY KEEPING HABITABLE TEMPERATURES INSIDE.



BY USING BAMBOO AS A PIPE, THIS METHOD IS TAKING PLACE. BAMBOO PIPES ARE USED TO DIVERT PERENNIAL SPRINGS ON THE HILL TOPS TO THE LOWER REACHES BY GRAVITY. THE CHANNEL SECTIONS, MADE OF BAMBOO, DIVERT AND CONVEY WATER TO THE PLOT SITE WHERE IT IS DISTRIBUTED WITHOUT LEAKAGE INTO BRANCHES, AGAIN MADE AND LAID OUT WITH DIFFERENT FORMS OF BAMBOO PIPES.

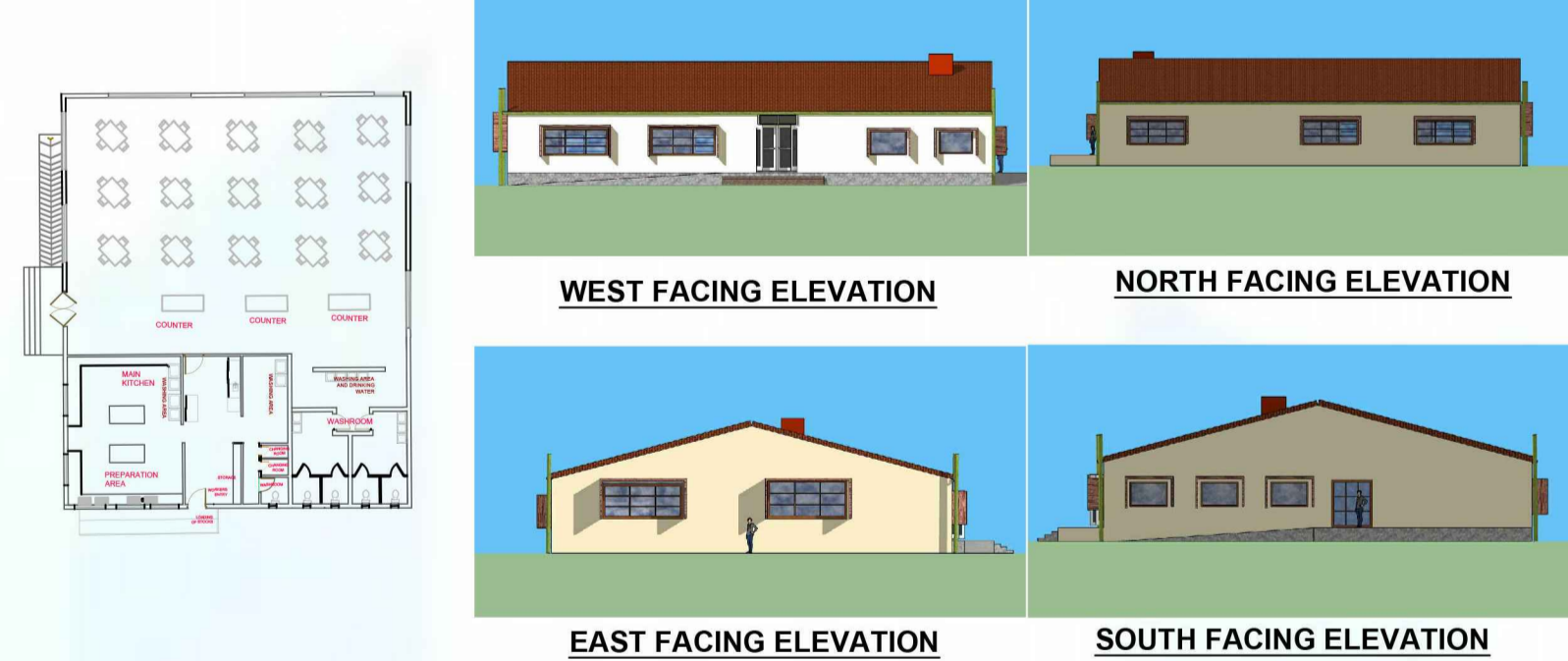
### 7. RAIN WATER HARVESTING



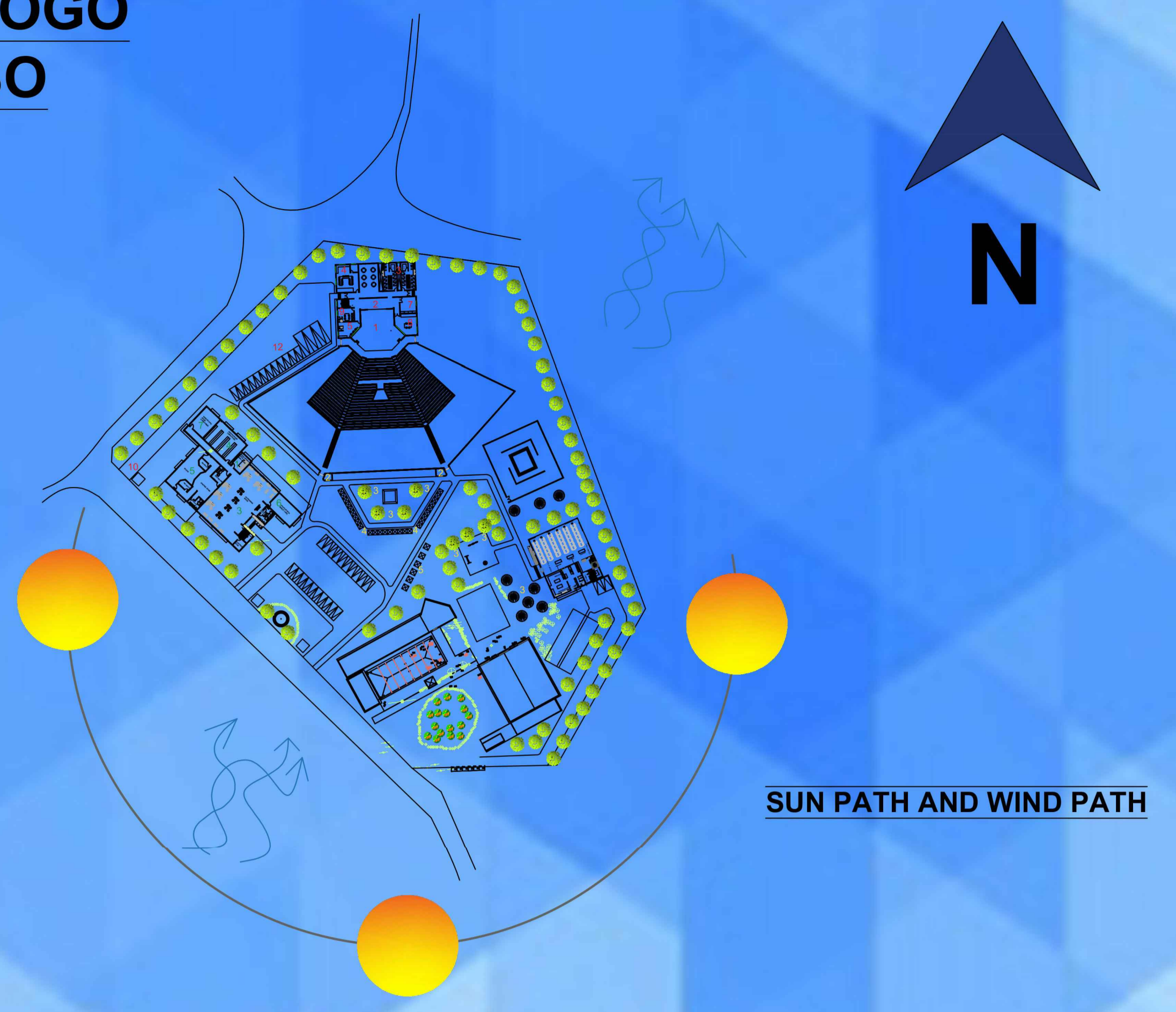
RAIN WATER HARVESTING IS ONE OF THE BEST WAY TO SAVE WATER AND USE IT FOR MANY OTHER PURPOSES. THROUGH THIS TANK, THE COLLECTED WATER IS TRANSFERRED INTO THE UNDERGROUND TANK AND THEN CAN BE USED WHENEVER NEEDED.

## RESTAURANT

## PLAN



## MATERIALS USED



## THE WORK AREA

1. THE STAGE (MINIMAL DIMENSIONS 15M DEEP AND 18M WIDE)
2. THE BACKSTAGE FOR 20 PERFORMERS
3. (DRESSING ROOMS, RESTROOMS, SHOWERS, MIRRORS)
4. A MEETING ROOM WITH A KITCHENETTE
5. A ROOM FOR TECHNICIANS
6. AN OPEN TERRACE WITH ACCESS TO THE OPEN AIR
7. A ROOM FOR CONSTRUCTION AND STORAGE FOR STAGE SETS
8. A ROOM AND WORKSHOP FOR REPAIR AND STORAGE OF TECHNICAL EQUIPMENT
9. A SEWING WORKSHOP
10. A TRUCK ACCESS
11. A TECHNICAL CABIN ROOM
12. GARAGE PARKING

## THE SHOW AREA

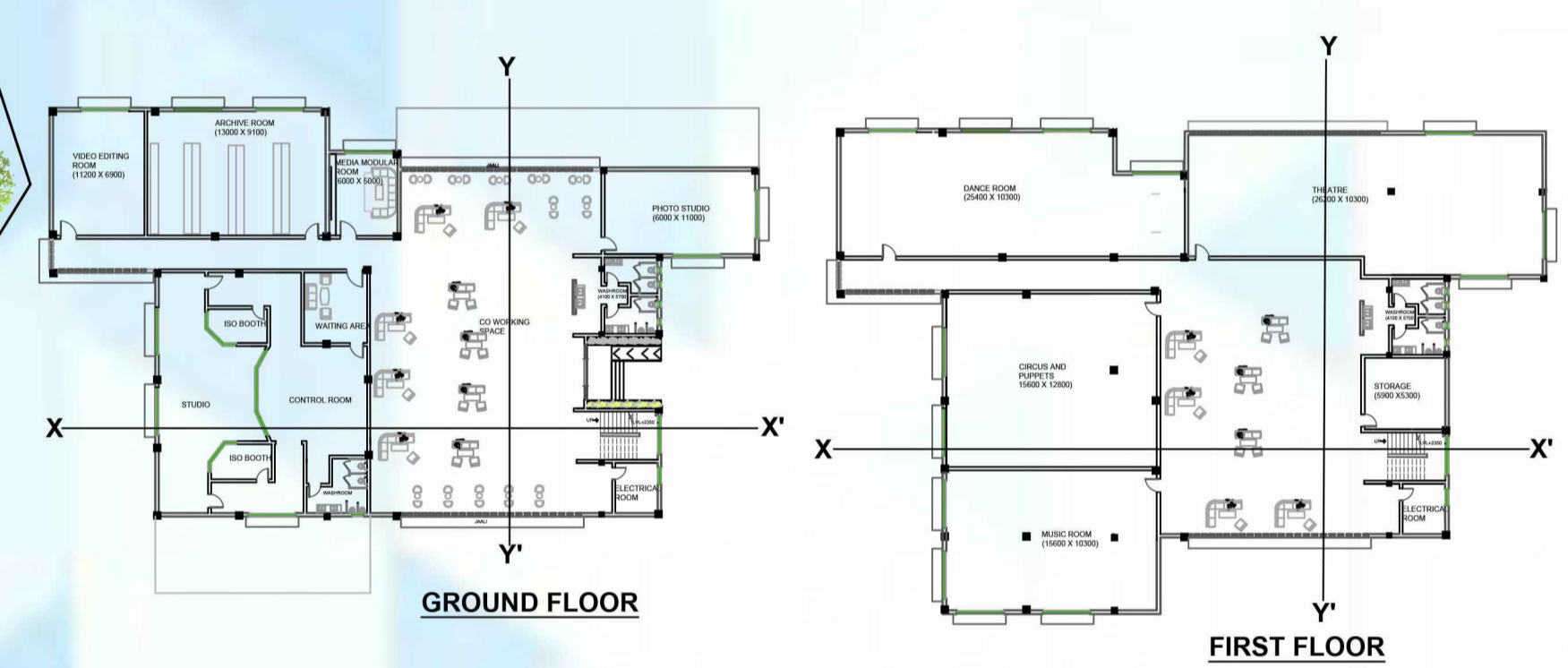
1. THE AUDITORIUM WITH EXISTING STAGE.
2. POINTS OF SALE FOR TICKETS.
3. SEATING AND A SPACE OF CONVIVIALITY
4. PLACE FOR TEMPORARY STALLS
5. ADVERTISING AND SIGNAGE
6. ART GALLERY

## THE LABO AREA

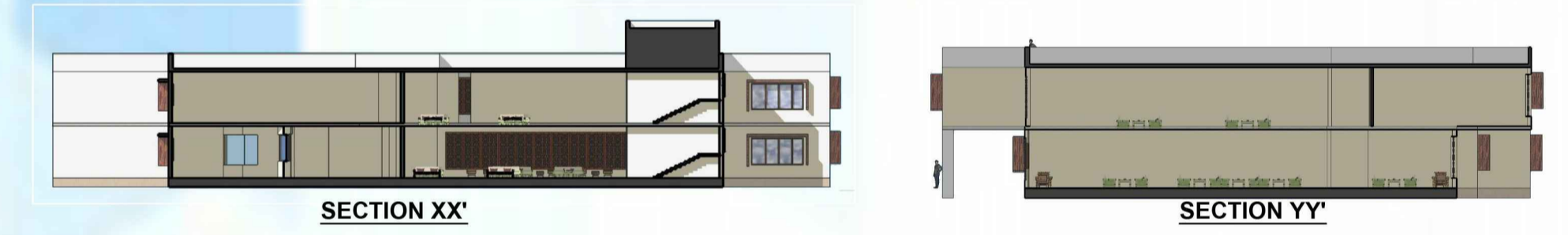
1. A MODULAR MEDIA ROOM
2. 4 EDUCATIONAL SPACES (150M2 MINIMUM) DEDICATED TO TEACHING DIFFERENT ARTISTIC DISCIPLINES (DANCE, THEATRE, MUSIC, CIRCUS, AND PUPPETS)
3. A CO-WORKING SPACE
4. AN ARCHIVE ROOM
5. A MUSIC RECORDING STUDIO
6. A STUDIO PHOTO STUDIO
7. A VIDEO EDITING ROOM

## LABO AREA

### FLOOR PLANS

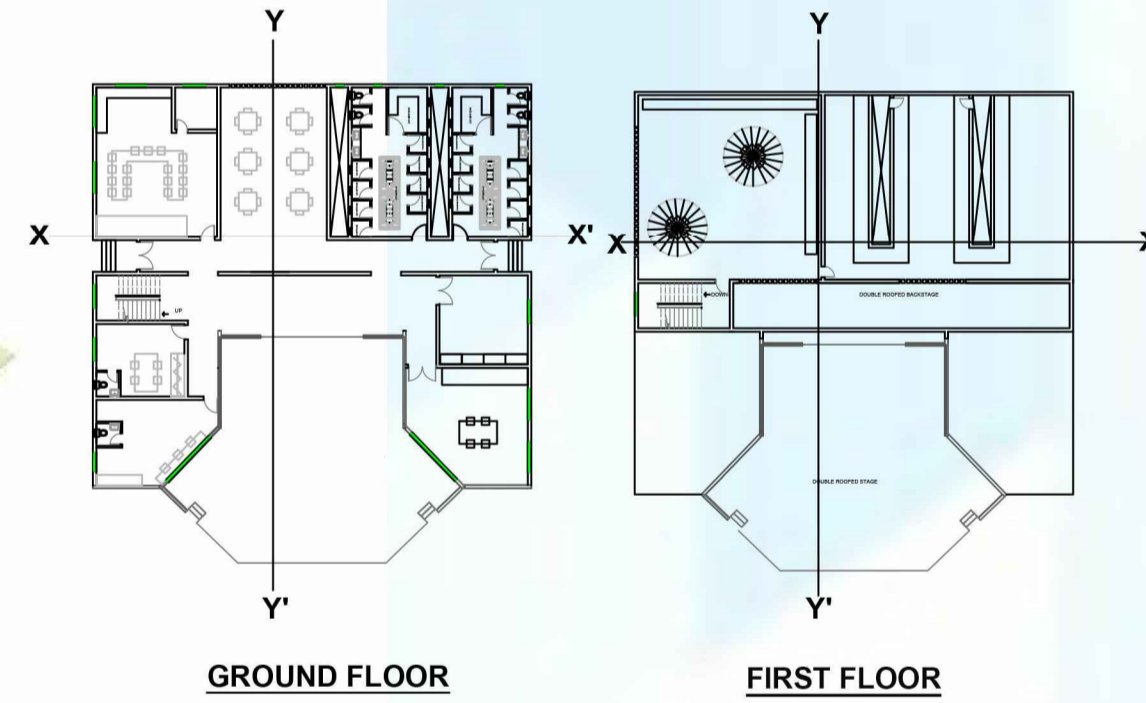


### SECTIONS

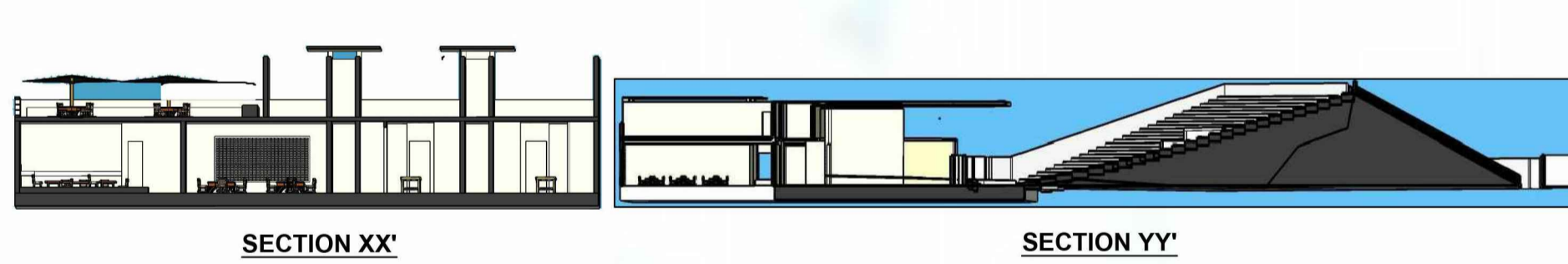


## WORK AREA

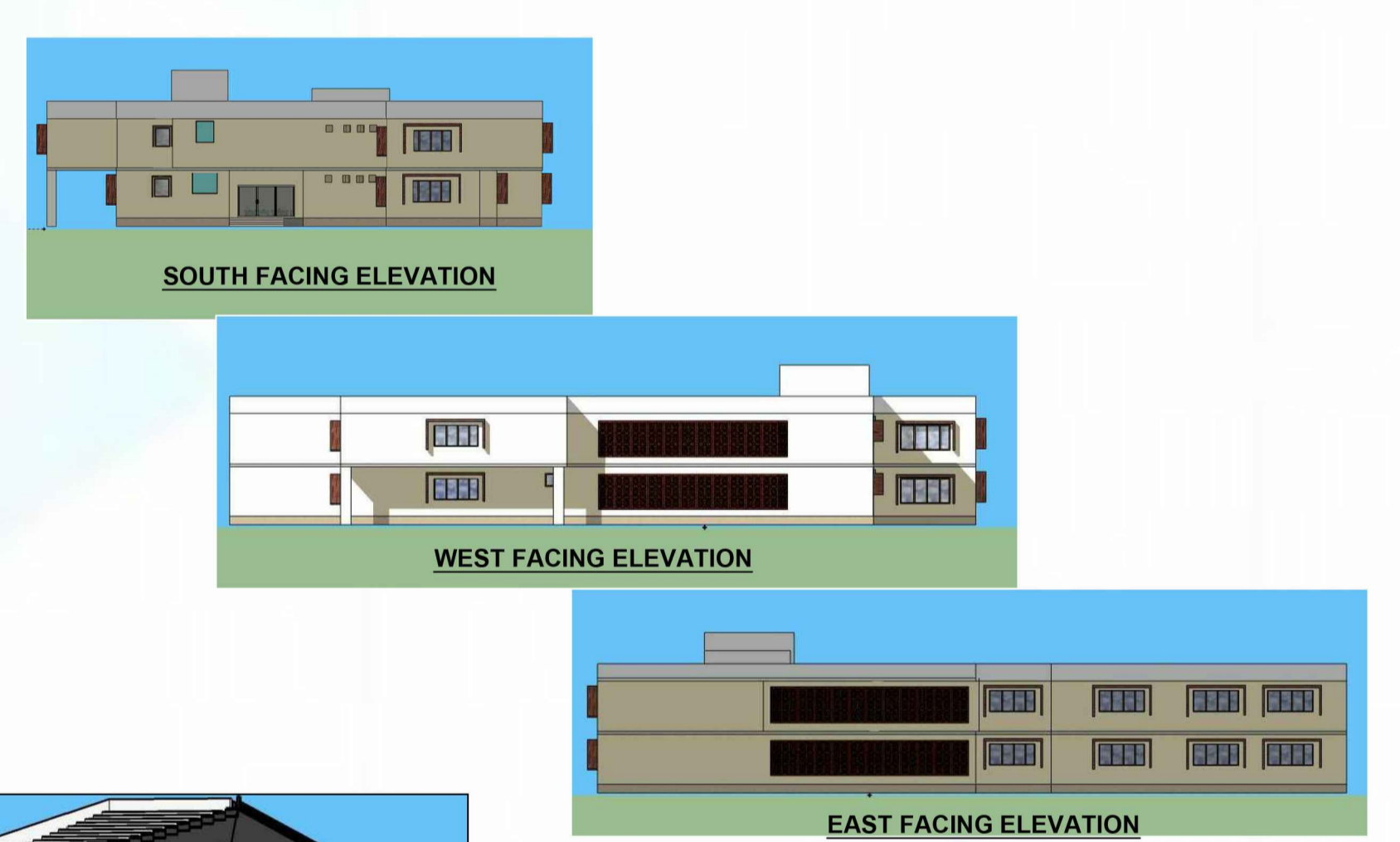
### FLOOR PLANS



### SECTIONS



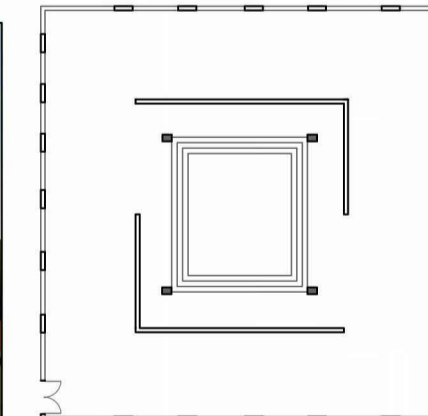
### ELEVATIONS



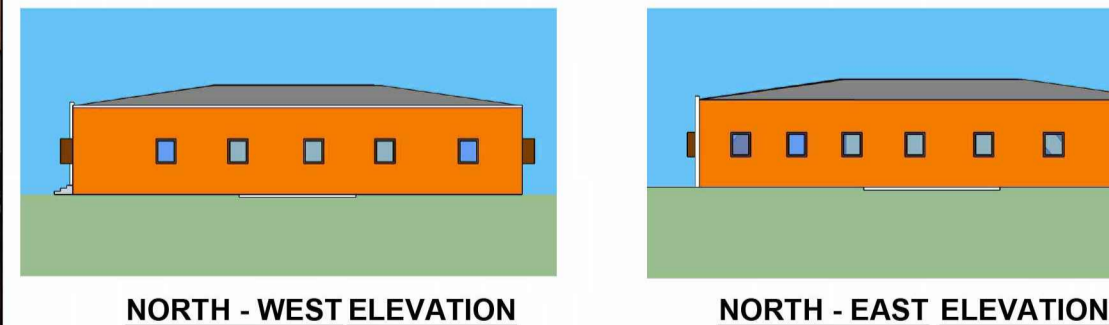
## SHOW AREA

### ART GALLERY

### PLAN

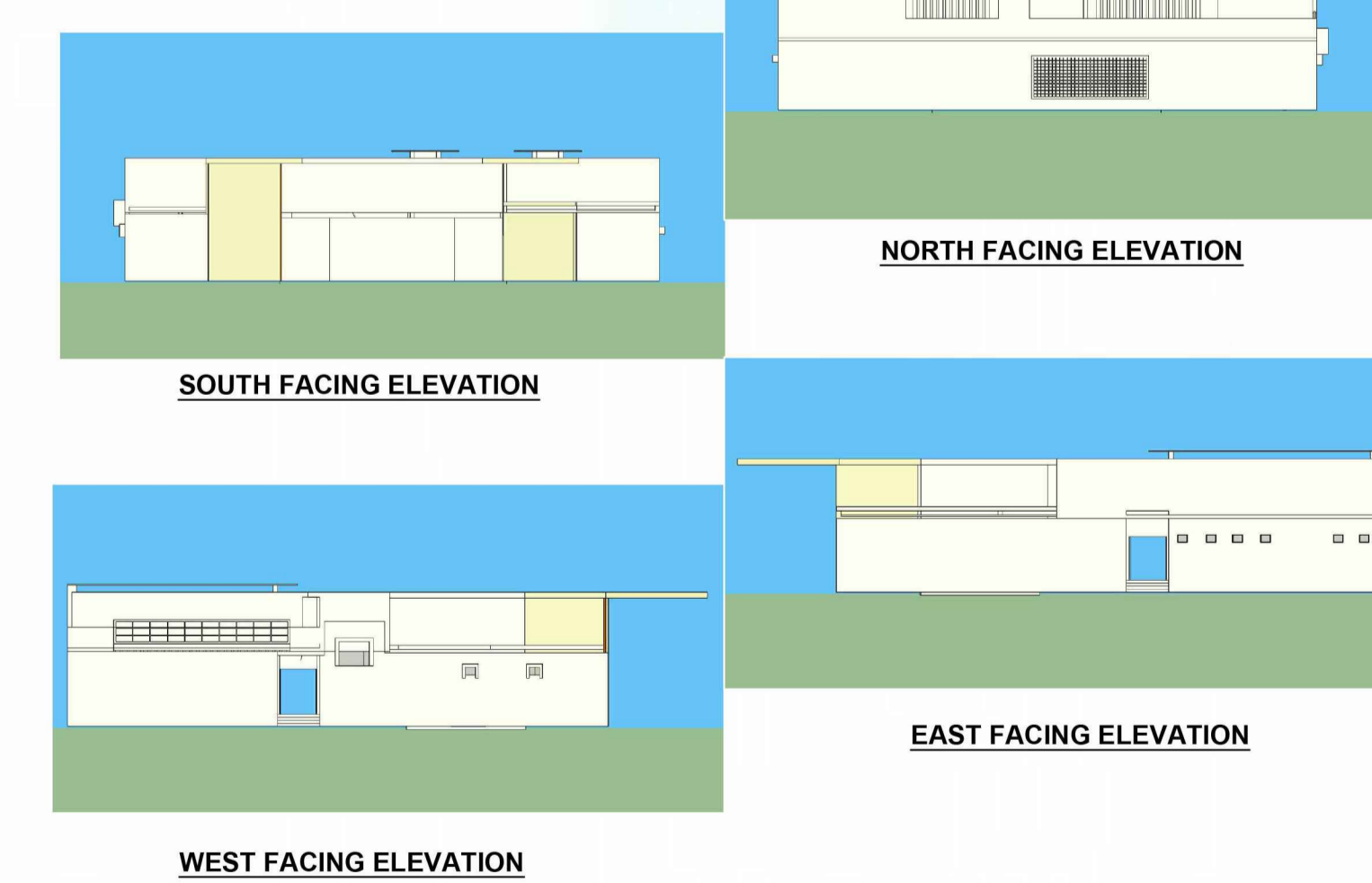


### ELEVATION



NORTH - WEST ELEVATION NORTH - EAST ELEVATION

### ELEVATIONS



WEST FACING ELEVATION

