

The background of the image is a grayscale micrograph showing a dense network of plant cells, likely from a root or stem. The cells are irregular in shape and form a complex, interconnected pattern. A dark, diagonal band runs across the center of the image, creating a sense of depth and highlighting the text.

**RAICES**

## INDEX

COVER PAGE	.....	1
INDEX	.....	2
COMPETITION	.....	3
MEMBERS, TEACHING TEAM	.....	4
PLACE OF INTERVENTION	.....	5
DESCRIPTIVE MEMORY	.....	6
DESCRIPTIVE MEMORY	.....	8
URBAN INTERVENTION	.....	7-11
PROJECT IDEA	.....	12-14
PROJECT DEVELOPMENT	.....	15-27

INSPIRELLI  
COMPETITION 2020

THEATRE POPULAIRE IDEA

TALLER COMBES VII- VIII  
GRUPO 27



CERVIÑO DOWLING  
IGNACIO



HAUTECOEUR  
JUAN MANUEL

DOCENTES A CARGO:

MANSUETO, MIGUEL  
MONTES DE OCA, AUGUSTO  
RODRIGUEZ ANIDO, PATRICIA

# UGANDUGUDU BURKINA-FASO



CONTINENTAL  
LOCATION



REGIONAL  
LOCATION



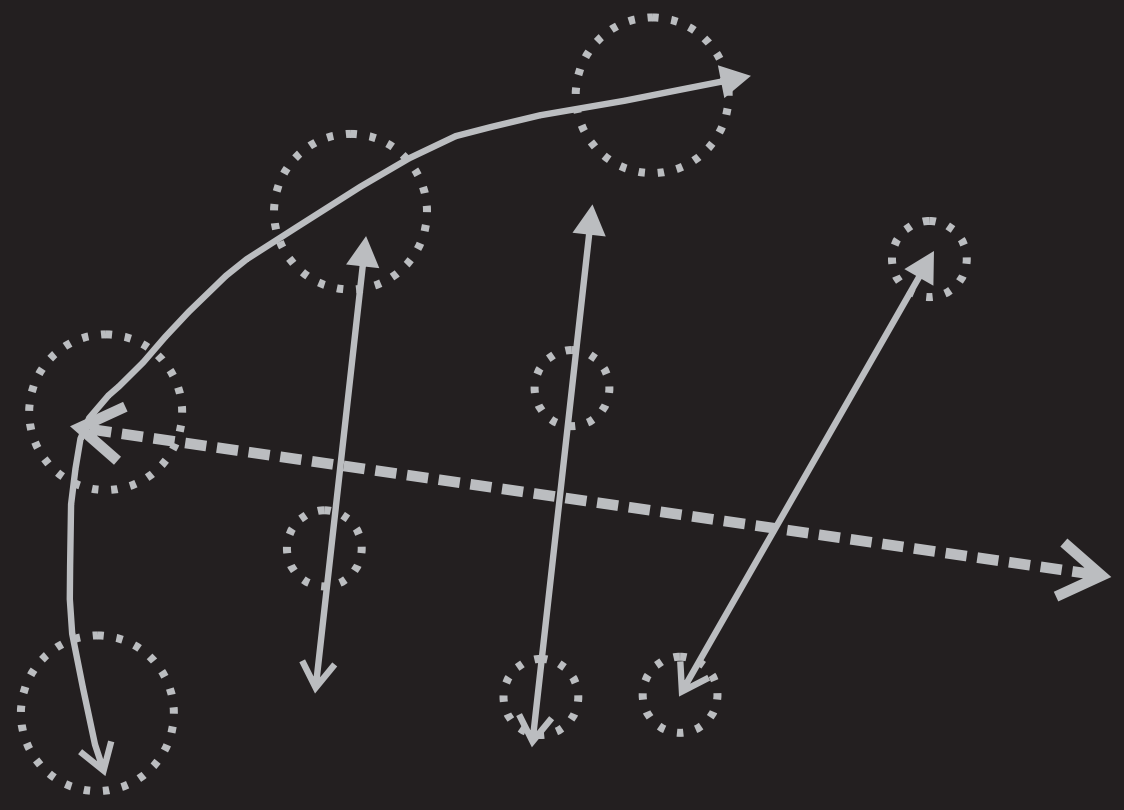
LOCATION  
CITY SCALE



ANALYSIS  
LOCATION

## DESCRIPTIVE MEMORY

A SOCIETY IS THE FAITHFUL REFLECTION OF ITS HISTORY, ITS CUSTOMS, AND ITS BELIEFS. IT IS ALWAYS IMPORTANT WHEN PROJECTING TOWARDS THE FUTURE TO HAVE PRESET THE KEY ASPECTS THAT MAKE A PEOPLE, THAT WILL ALLOW US TO IMPREGNATE IN OUR PROJECTS THE FUNDAMENTAL CHARACTERISTICS OF THE PLACE AND PLACE. FOR SOMETHING TO GROW WE MUST TAKE CARE OF ITS ROOTS.

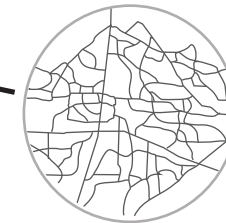


URBAN PROPOSAL

# URBAN INTERVENTION



- IMPORTANT BUILDINGS
- HOTEL NODE PROPOSAL
- ROADS OF CIRCULATION  
(THICKNESS ACCORDING TO  
IMPORTANCE)
- LINEAR PARK PROPOSAL
- ..... FLOOD PARK PROPOSAL
- ..... PROPOSAL  
EXCLUSIVE STREETS FOR  
BICIGENDAS



ORGANIC PLOT

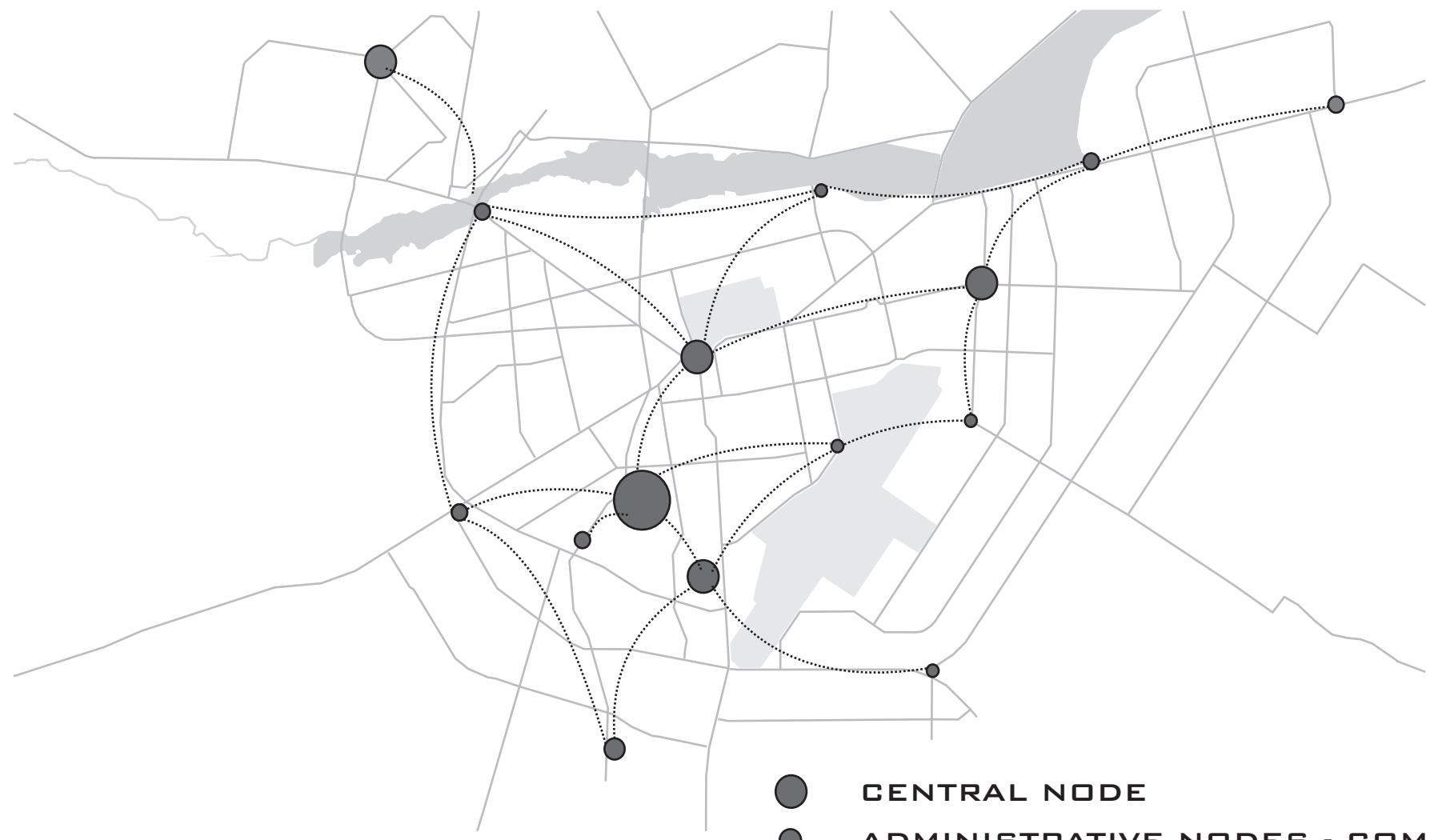


RADIAL SCREEN



PLOT  
ORTHOGONAL

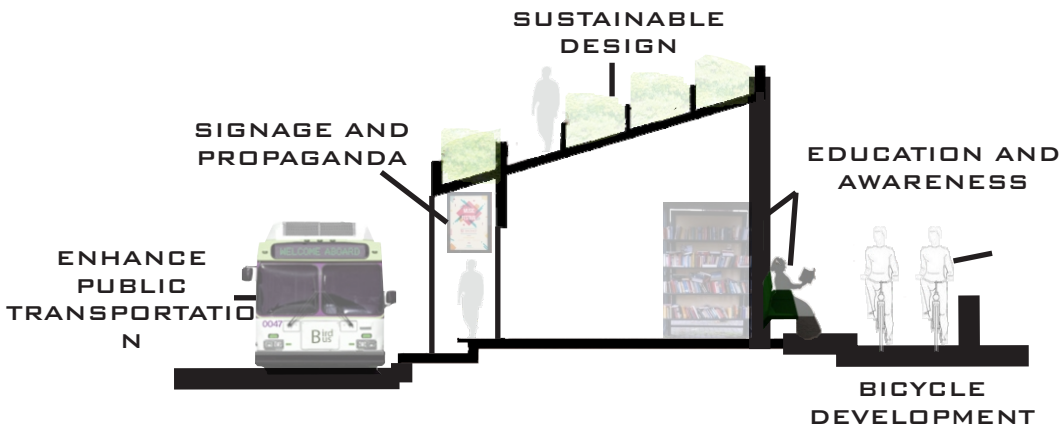
# URBAN INTERVENTION



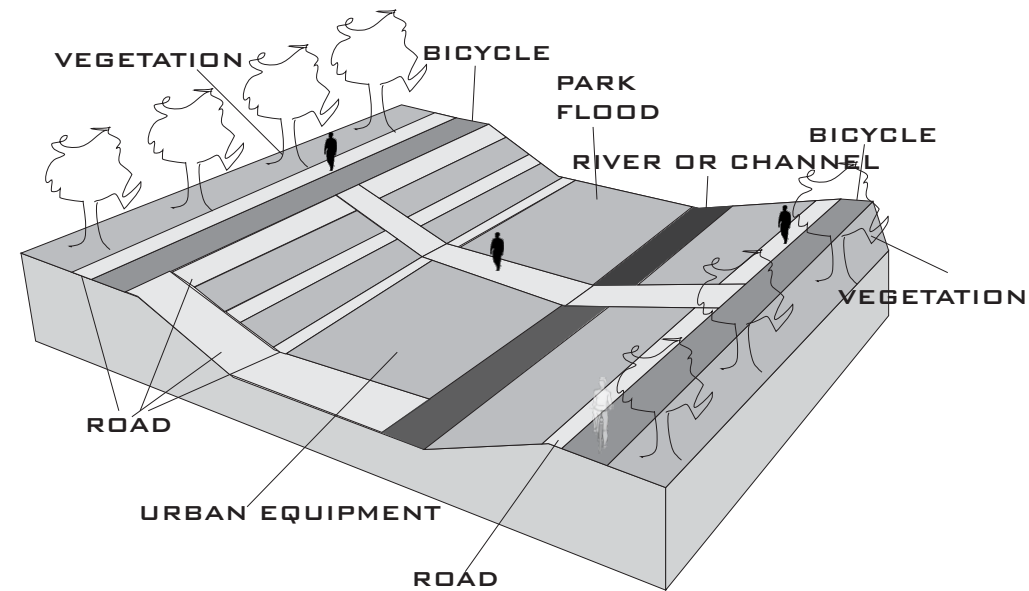
- CENTRAL NODE
- ADMINISTRATIVE NODES - COMMERCIAL
- SUSTAINABLE NODES- EDUCATIONAL

# URBAN INTERVENTION

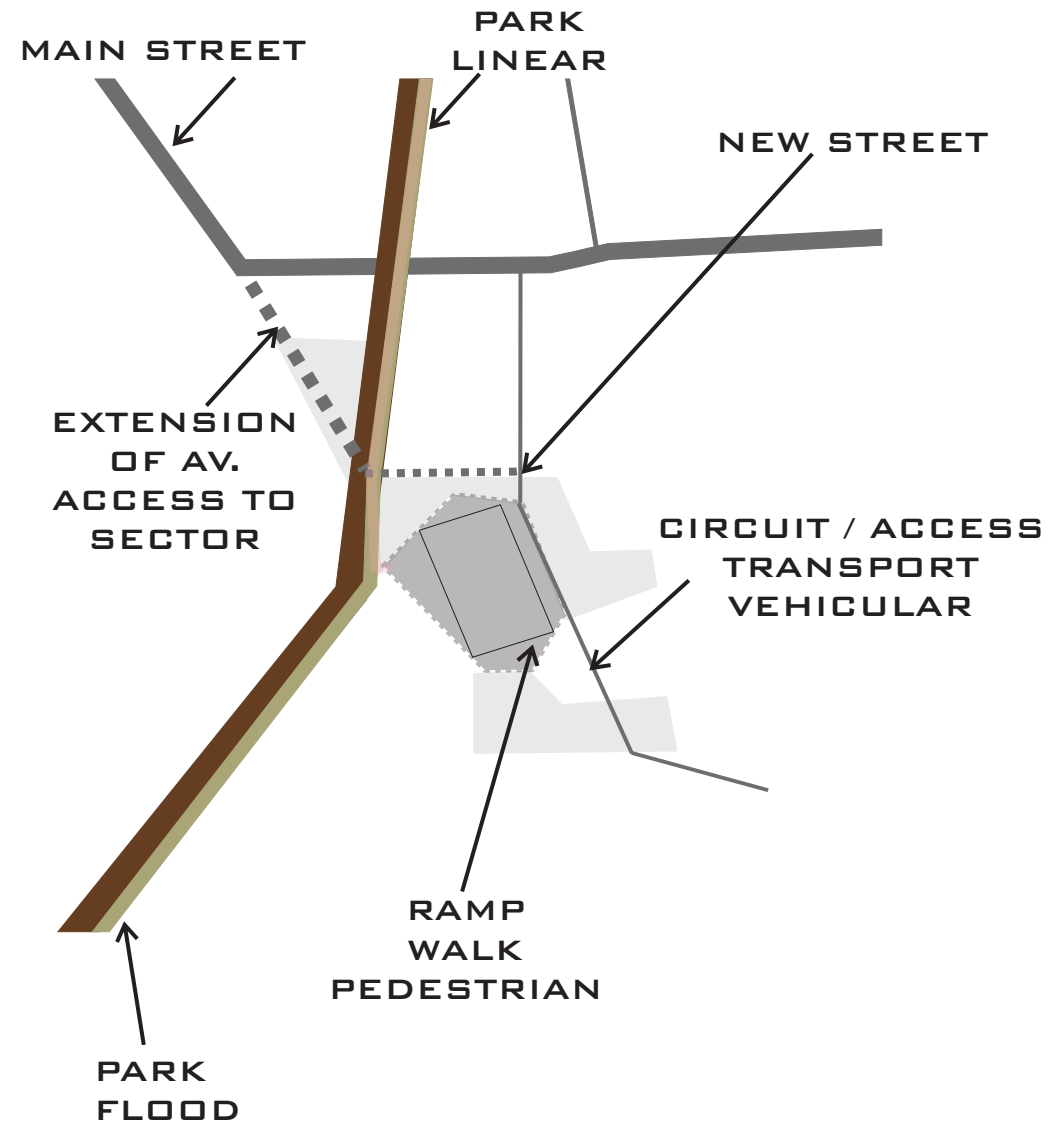
## NODES PARK PROPOSAL



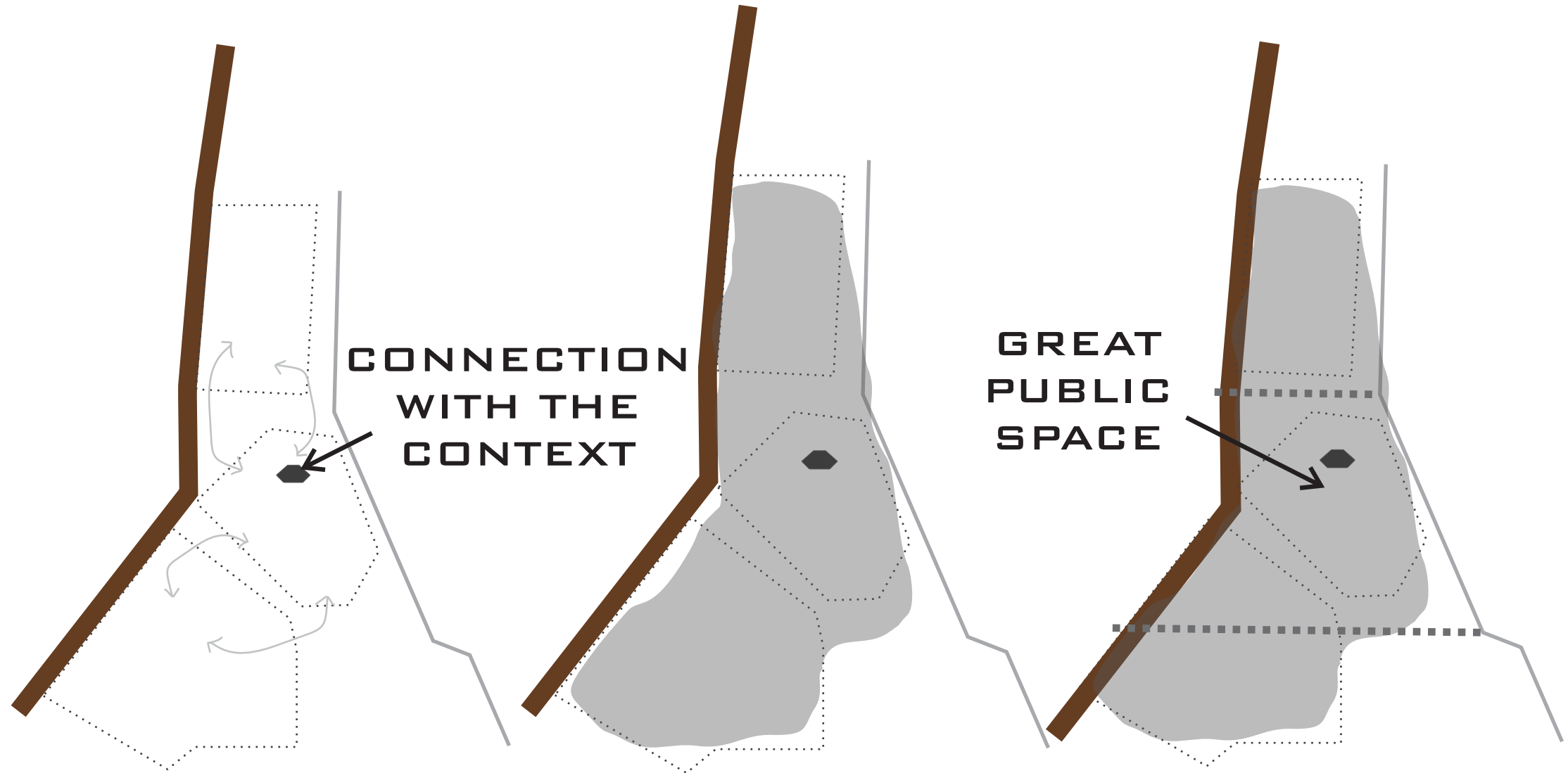
## FLOOD PARK PROPOSAL



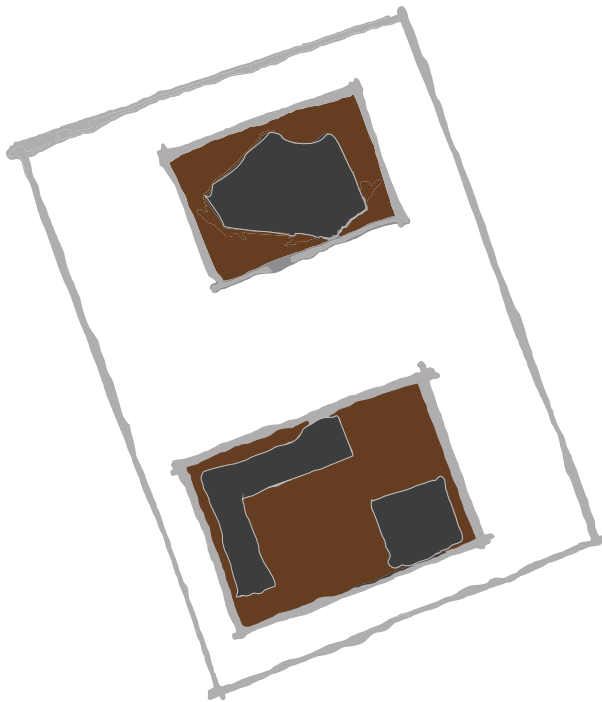
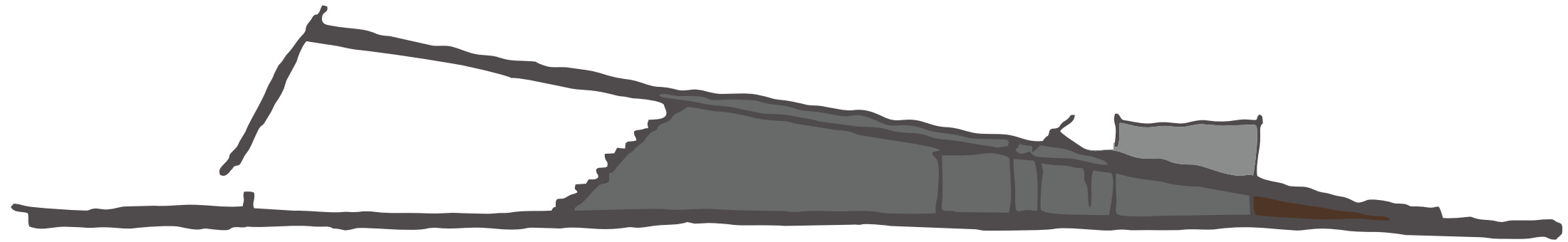
# BARRIAL INTERVENTION



PROJECT IDEA

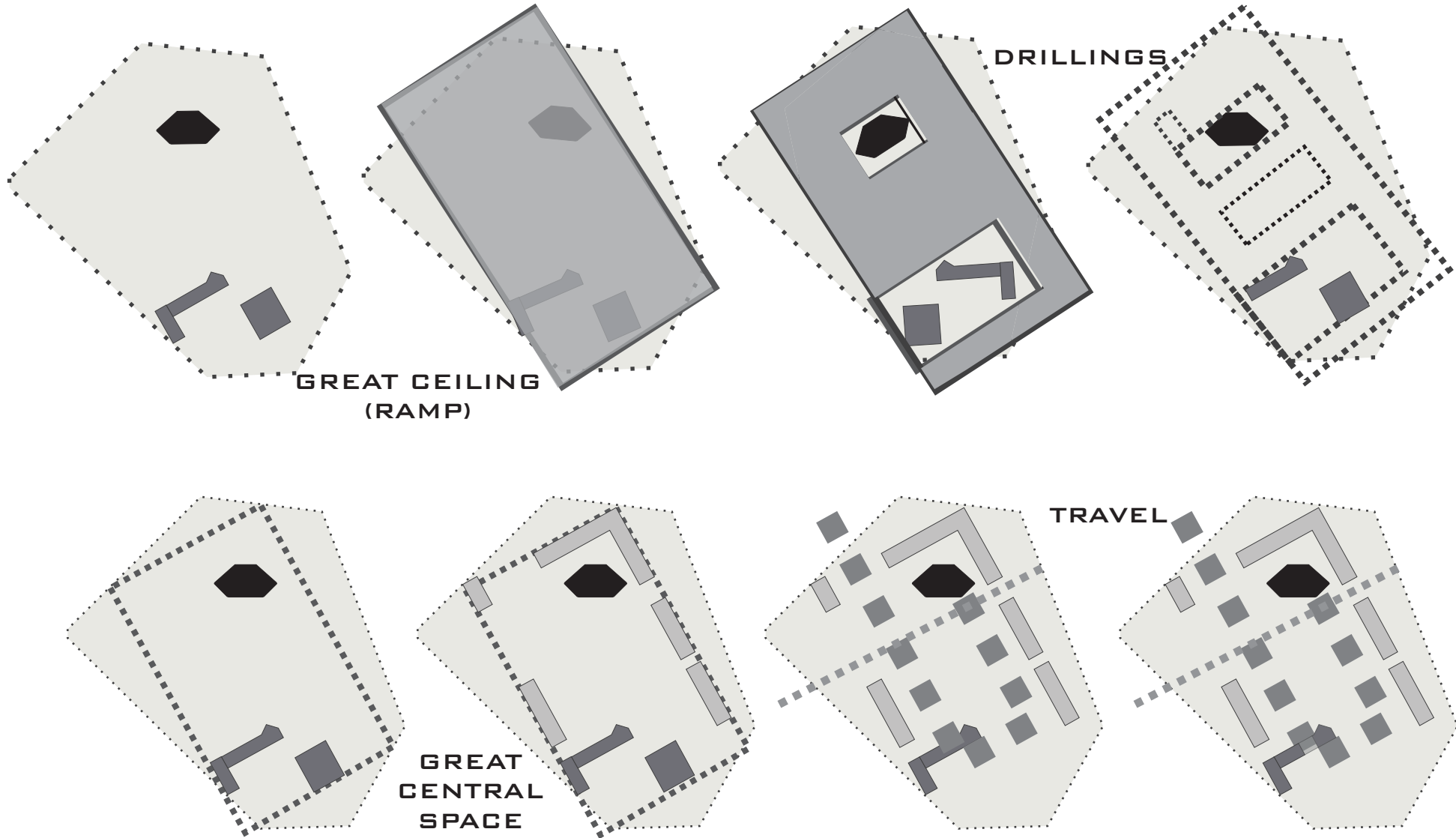


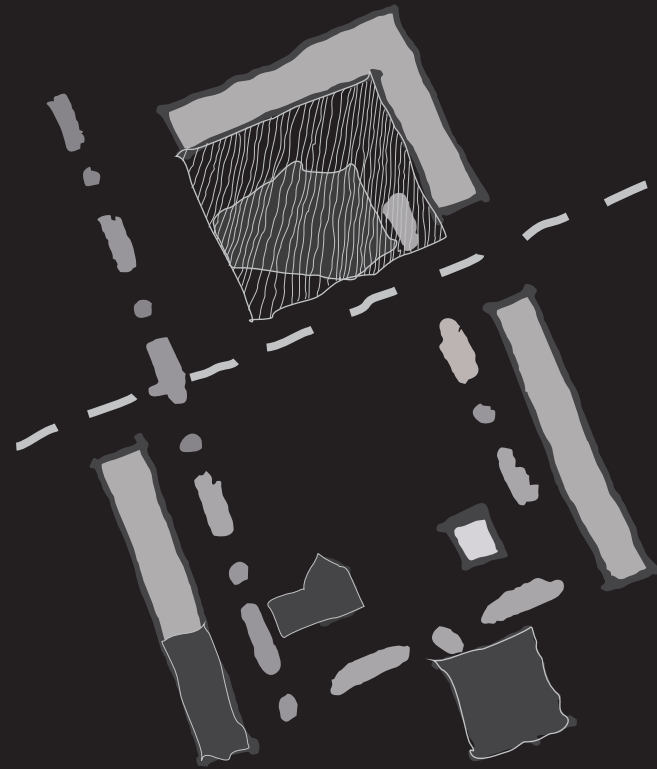
## PROJECT IDEA



USE OF A LARGE RAMP THAT WILL ALLOW US TO UNITE THE EXISTING BUILDINGS, MAKING THE UNIT COMPLETE. THIS RAMP OF CONCRETE CONCRETE, WILL RESPECT EXISTING BUILDINGS LEAVING HOLES, CLEARING OUR POSITION TO RESPECT THE HERITAGE THAT ALREADY EXISTS, RESPECTING THE ROOTS.

PROJECT IDEA





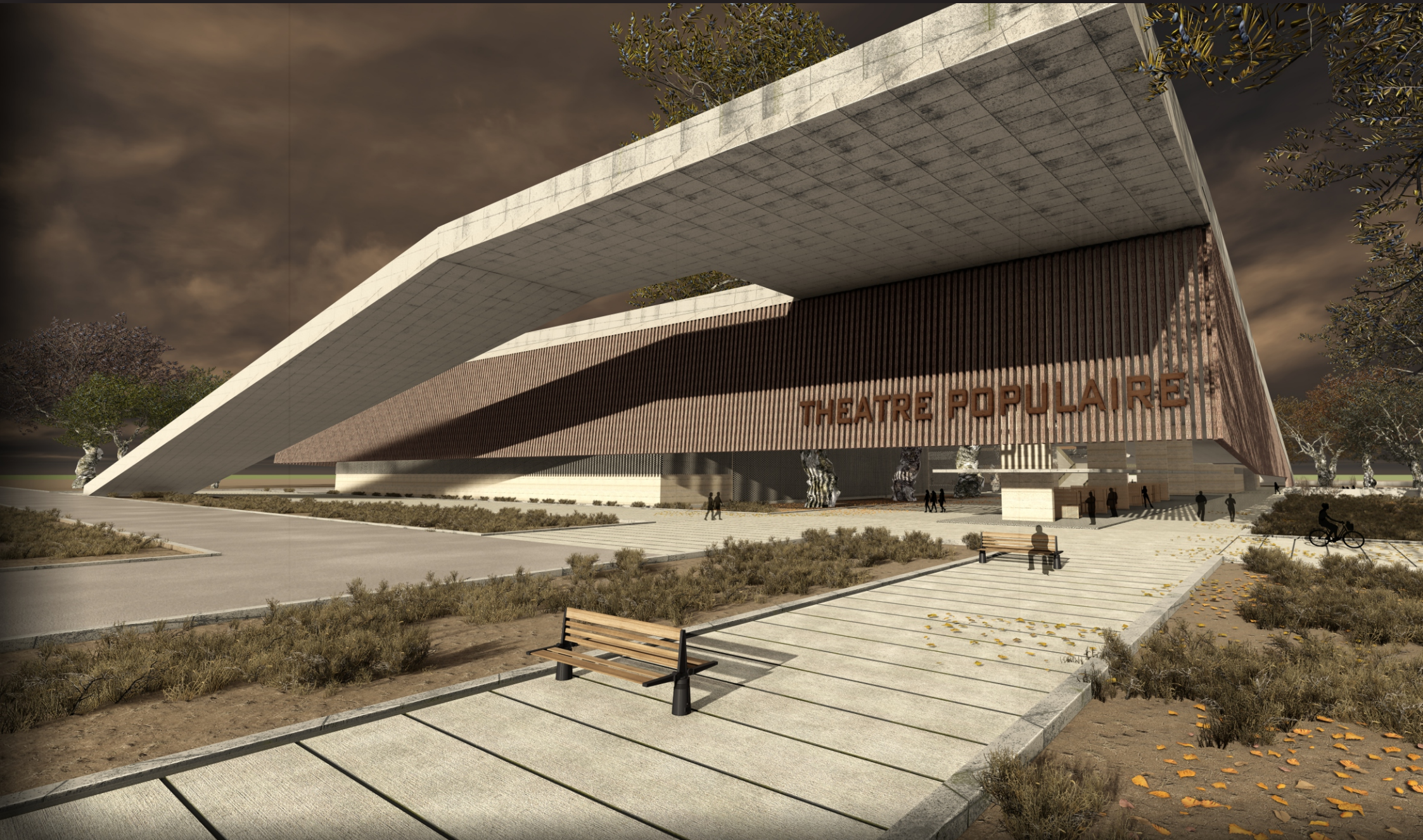
PLANIMETRY

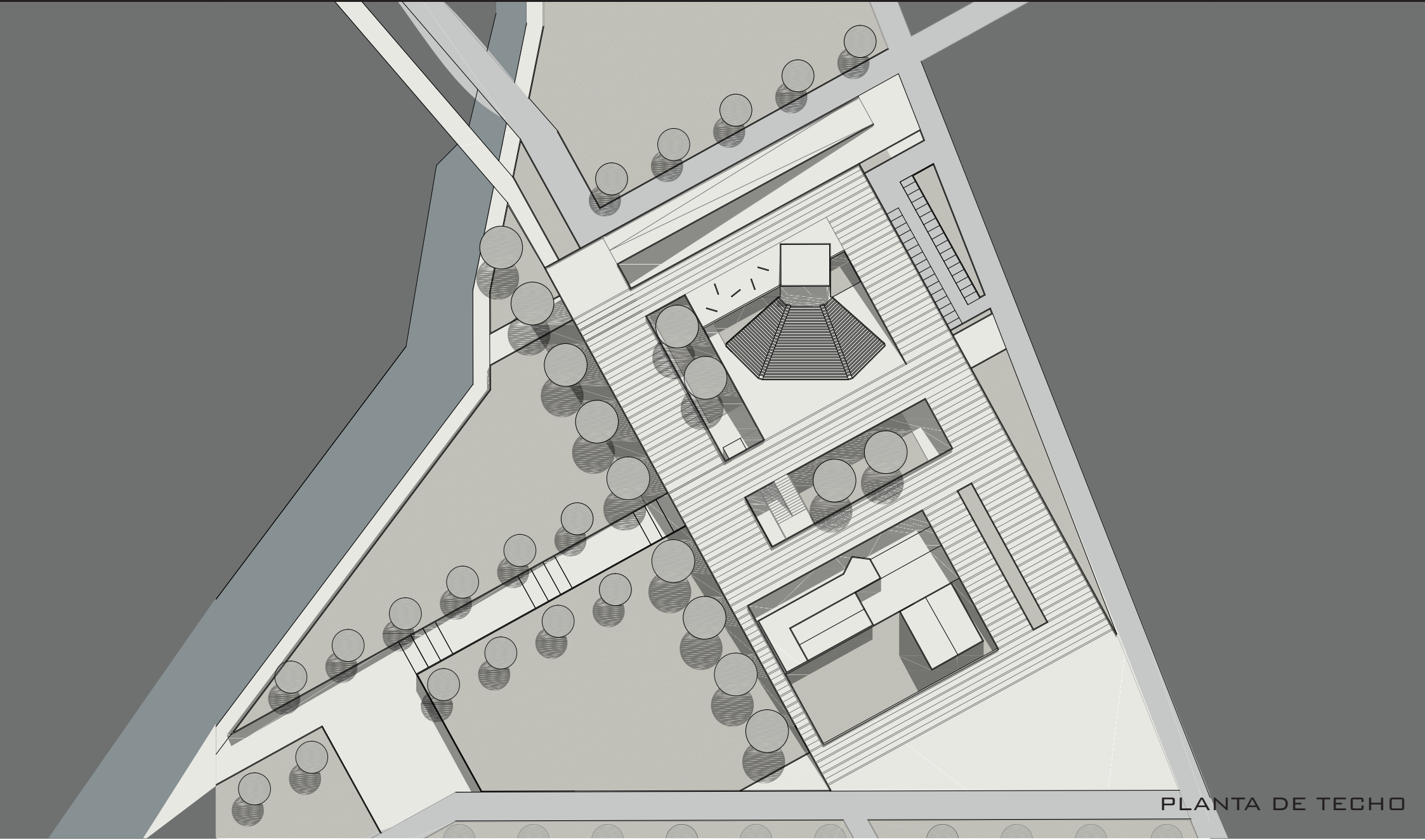
TEATRO POPULAIRE  
DESEO BONOGO

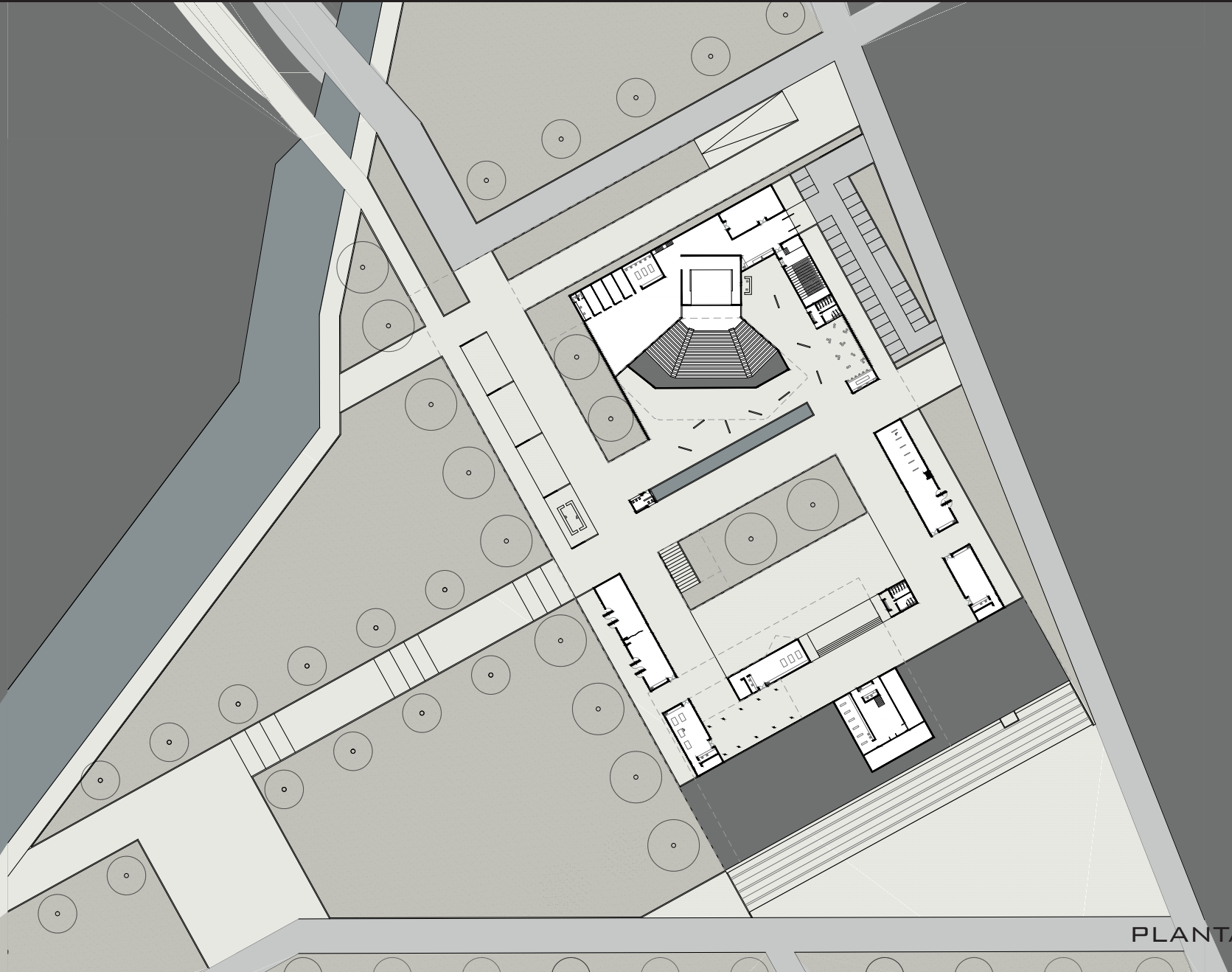
GRUPO

27

CERVIÑO DOWLING, IGNACIO  
HAUTECOEUR, JUAN MANUEL





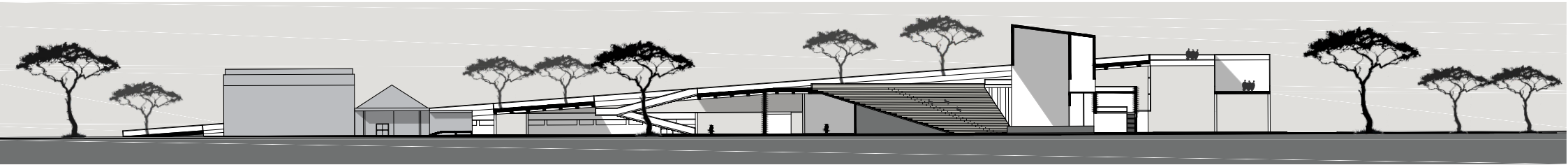


# TEATRO POPULAIRE DESEO BONOGO

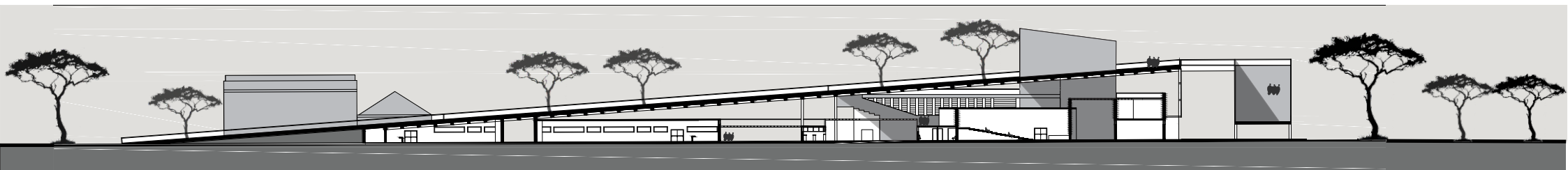
GRUPO

27

CERVIÑO DOWLING, IGNACIO  
HAUTECOEUR, JUAN MANUEL



CORTE A-A



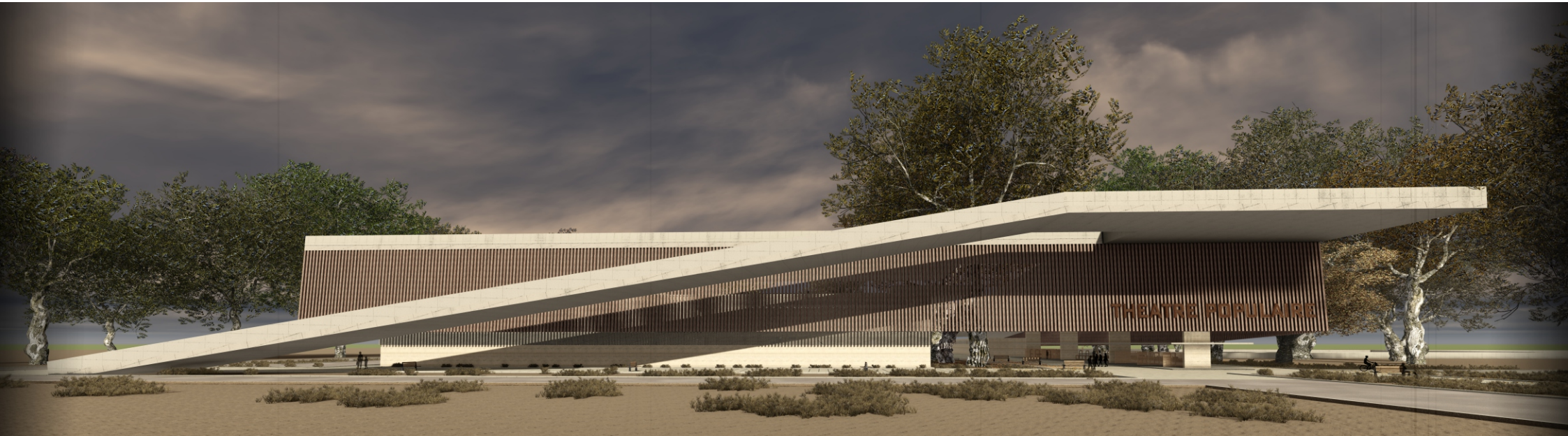
CORTE B-B

TEATRO POPULAIRE  
DESEO BONOGO

GRUPO

27

CERVIÑO DOWLING, IGNACIO  
HAUTECOEUR, JUAN MANUEL



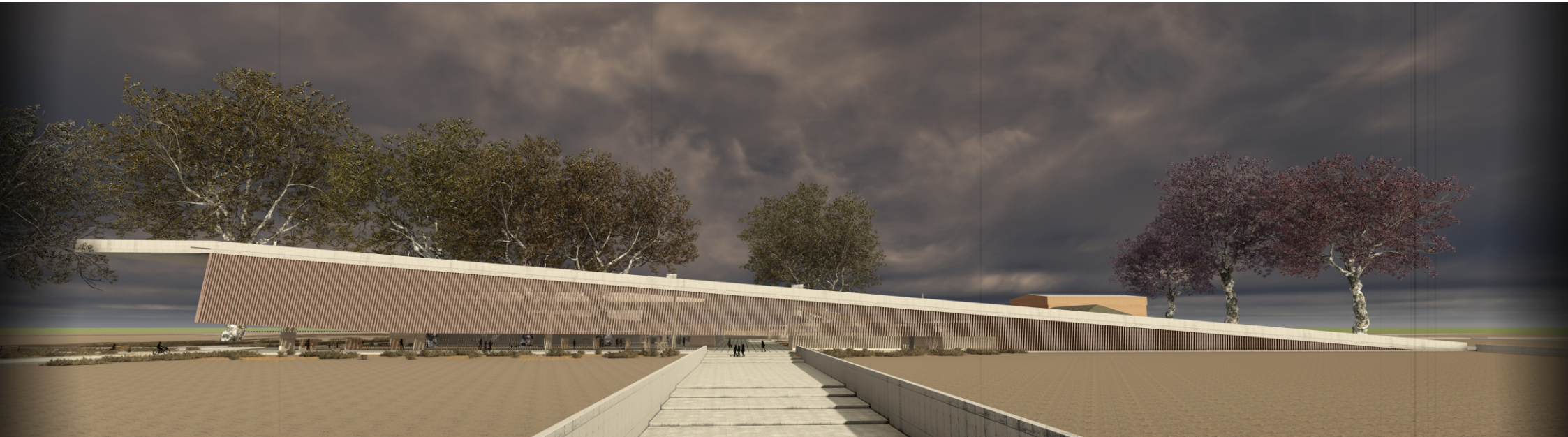
FRENTE 1

TEATRO POPULAIRE  
DESEO BONOGO

GRUPO

27

CERVIÑO DOWLING, IGNACIO  
HAUTECOEUR, JUAN MANUEL



FRENTE 2



RENDERS

TEATRO POPULAIRE  
DESEO BONOGO

GRUPO

27

CERVIÑO DOWLING, IGNACIO  
HAUTECOEUR, JUAN MANUEL

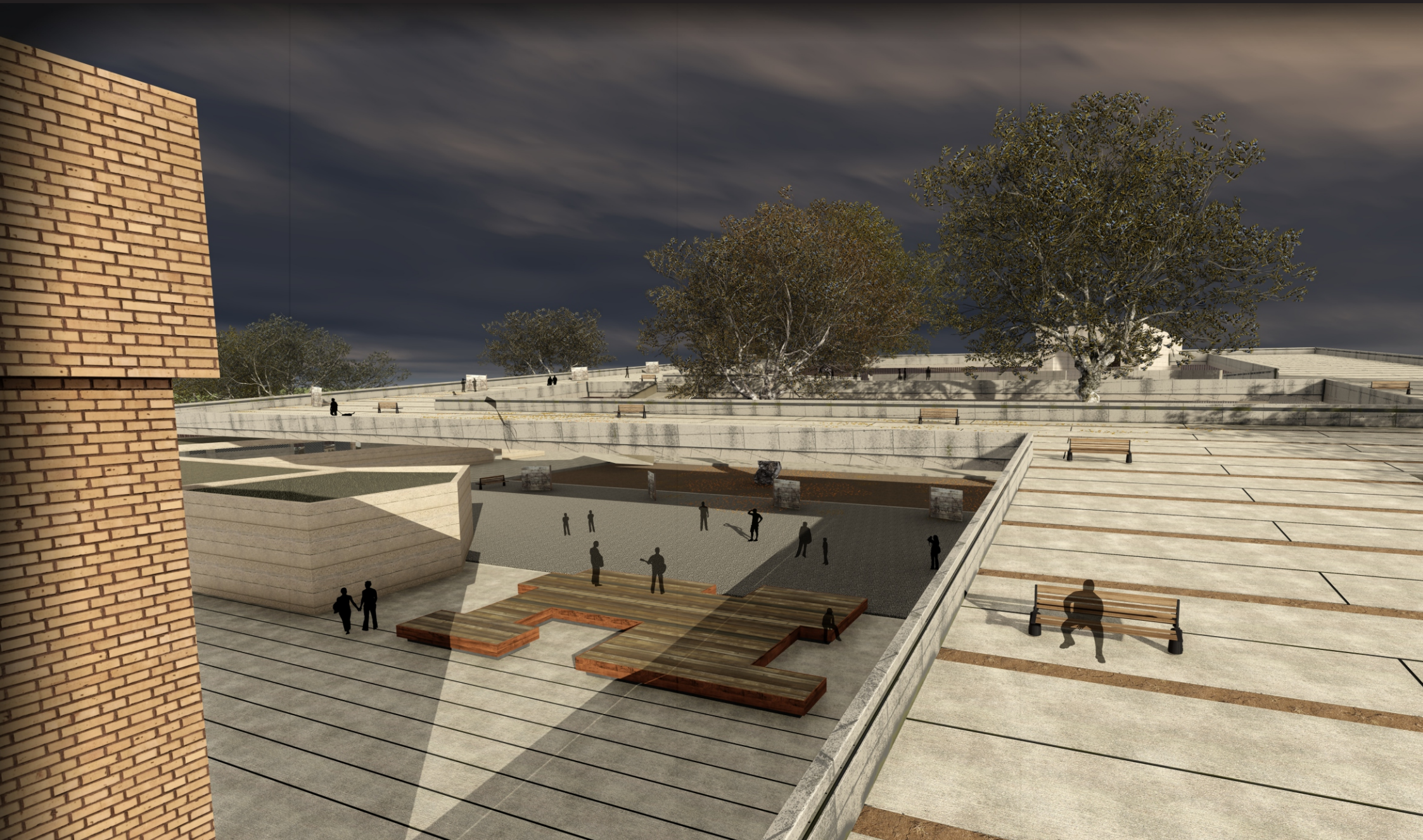


TEATRO POPULAIRE  
DESEO BONOGO

GRUPO

27

CERVIÑO DOWLING, IGNACIO  
HAUTECOEUR, JUAN MANUEL

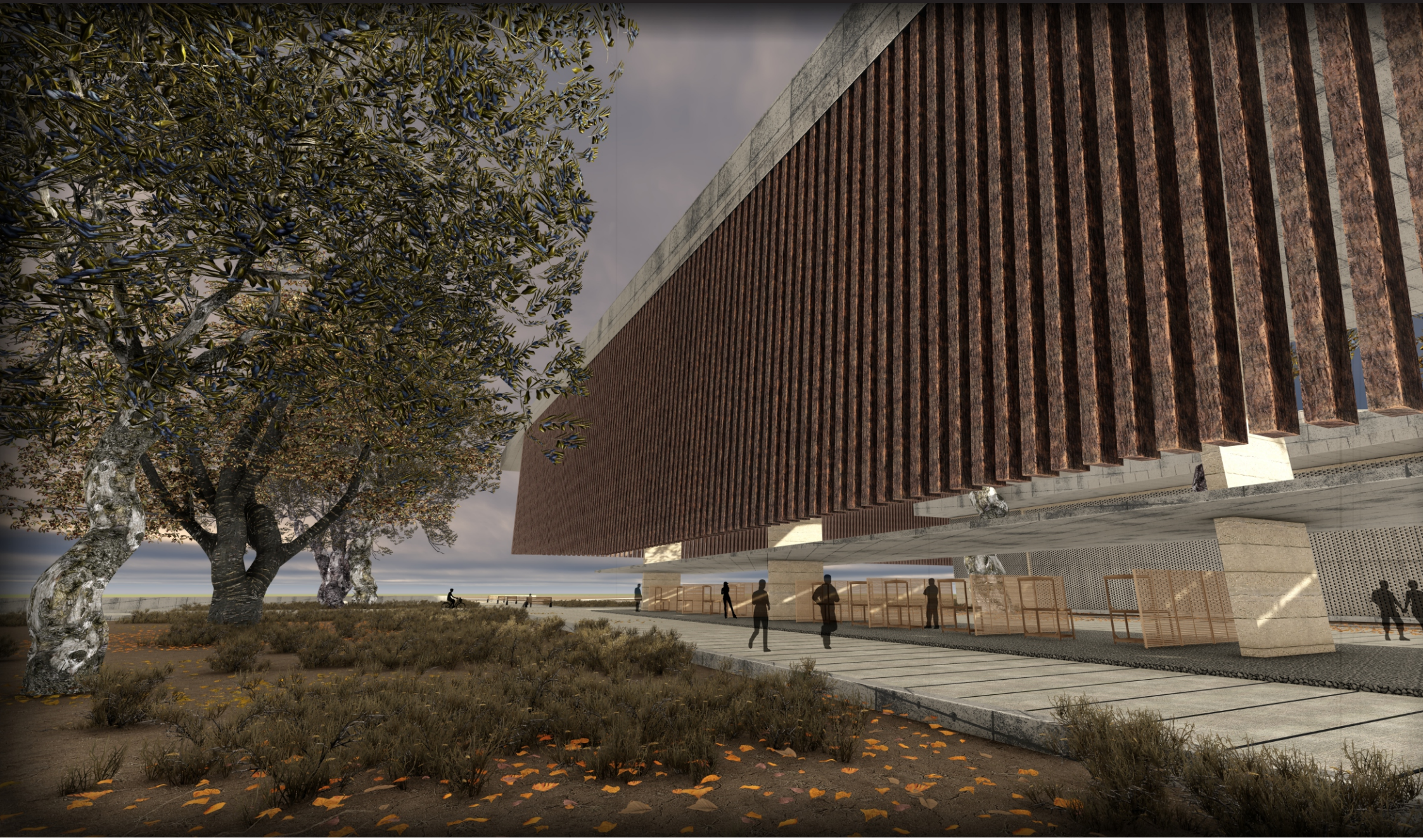


TEATRO POPULAIRE  
DESEO BONOGO

GRUPO

27

CERVIÑO DOWLING, IGNACIO  
HAUTECOEUR, JUAN MANUEL

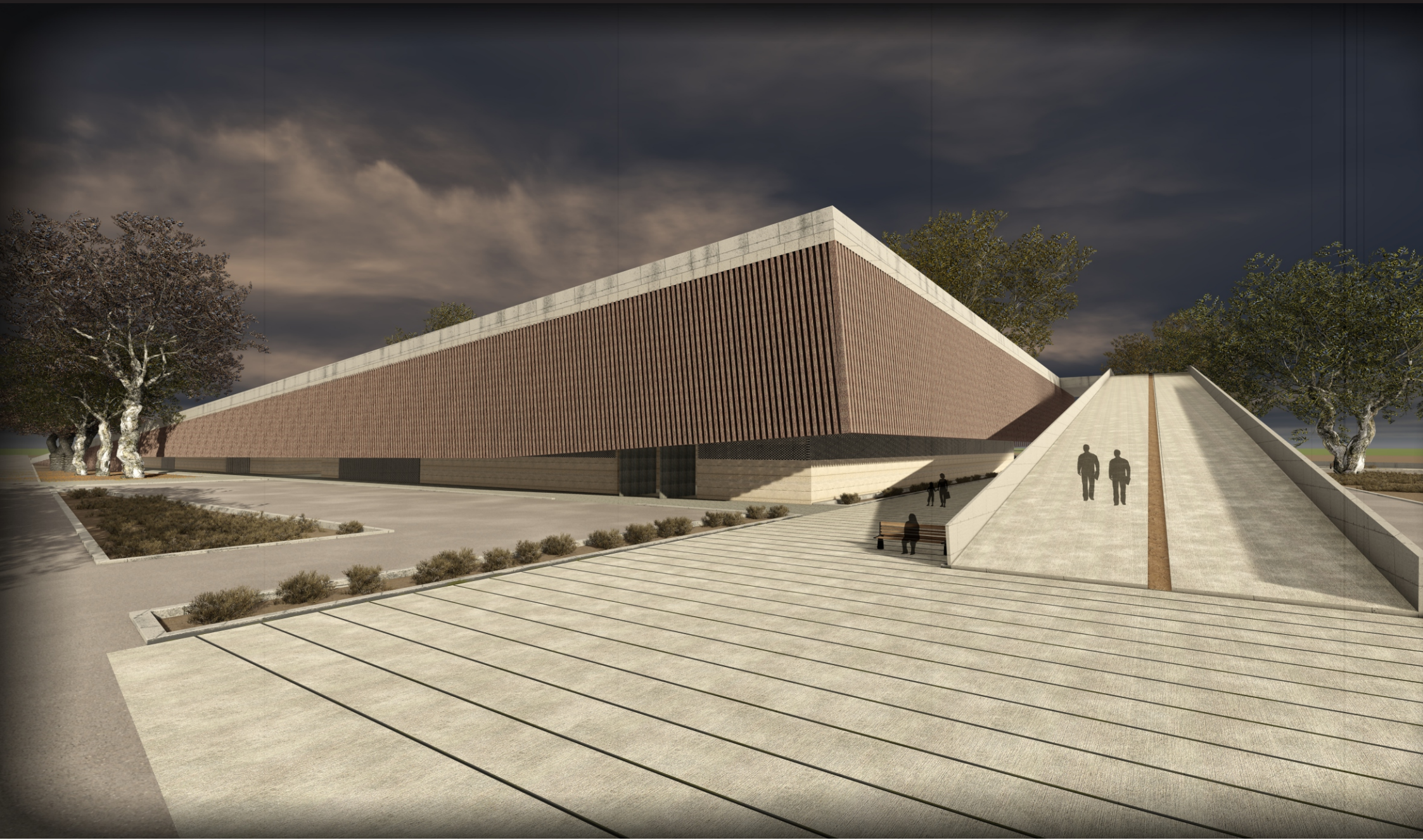


TEATRO POPULAIRE  
DESEO BONOGO

GRUPO

27

CERVIÑO DOWLING, IGNACIO  
HAUTECOEUR, JUAN MANUEL



TEATRO POPULAIRE  
DESEO BONOGO

GRUPO

27

CERVIÑO DOWLING, IGNACIO  
HAUTECOEUR, JUAN MANUEL

