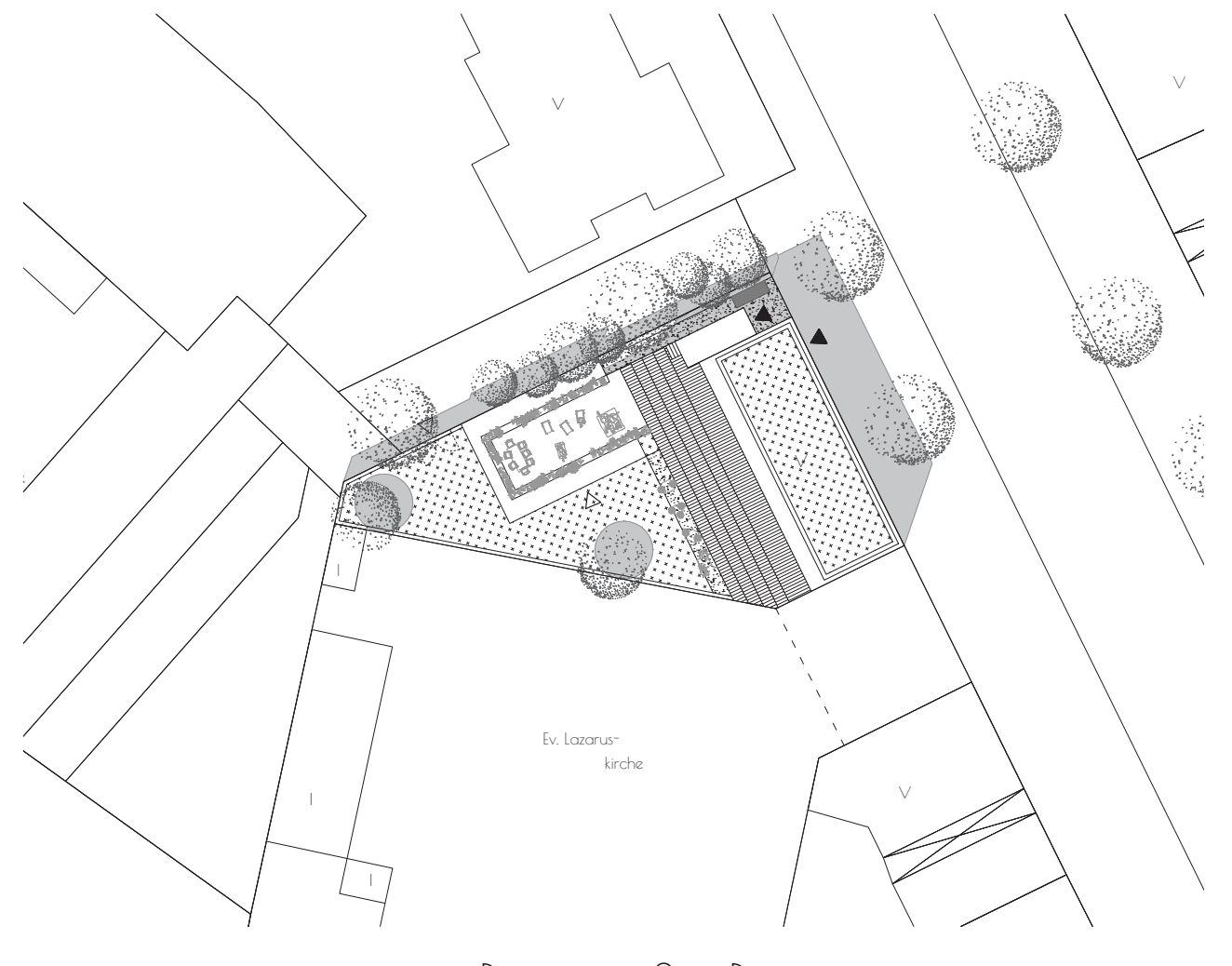
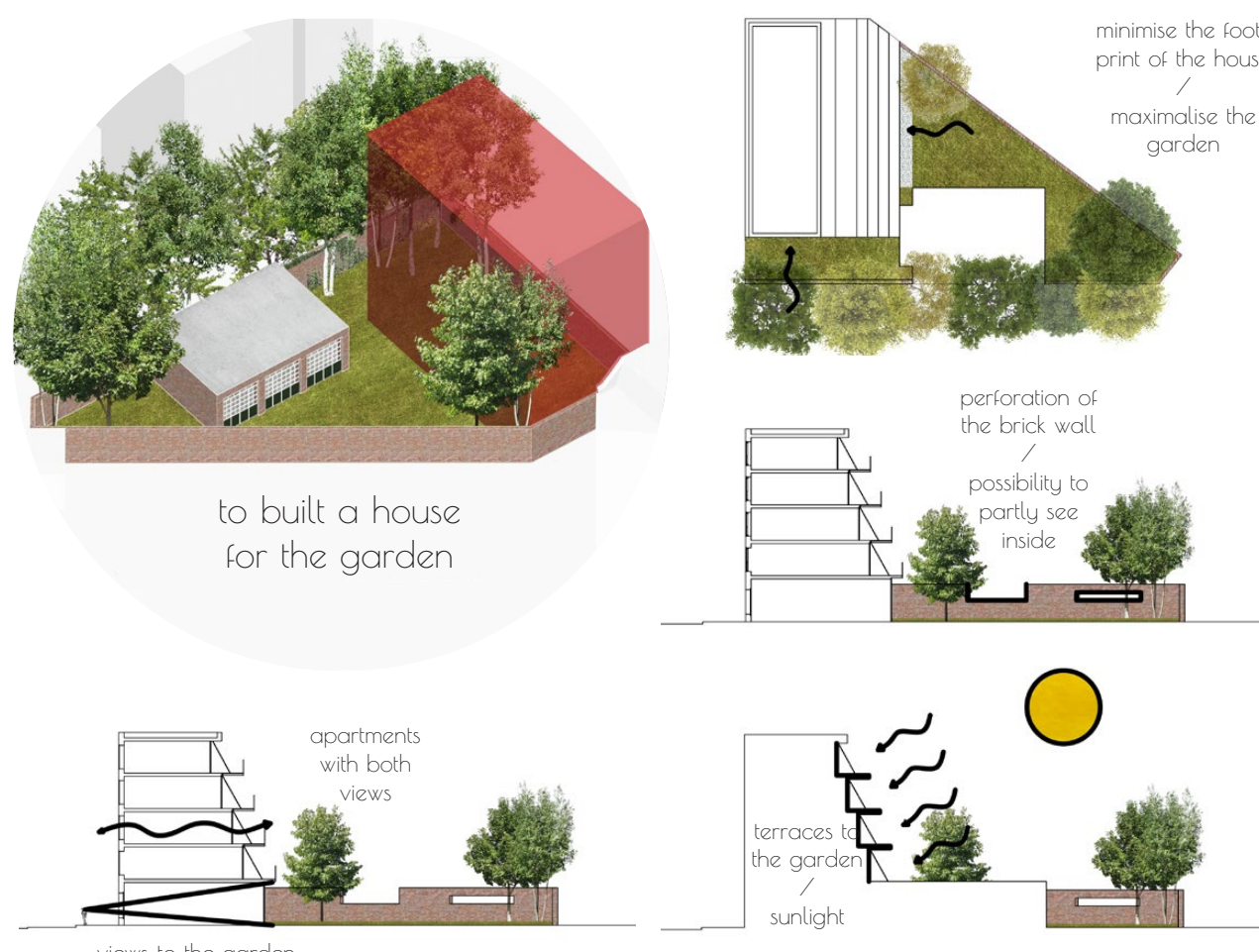




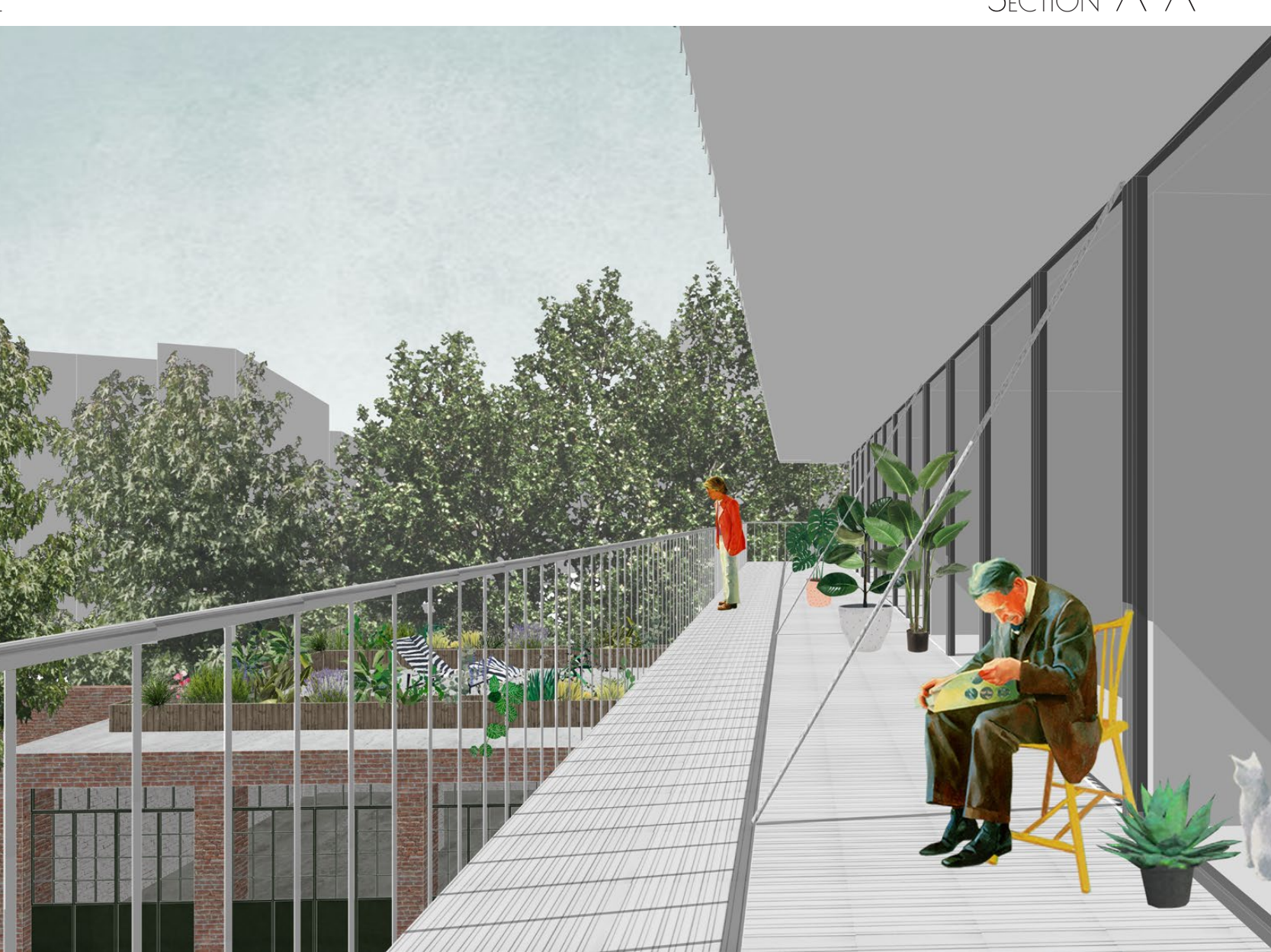
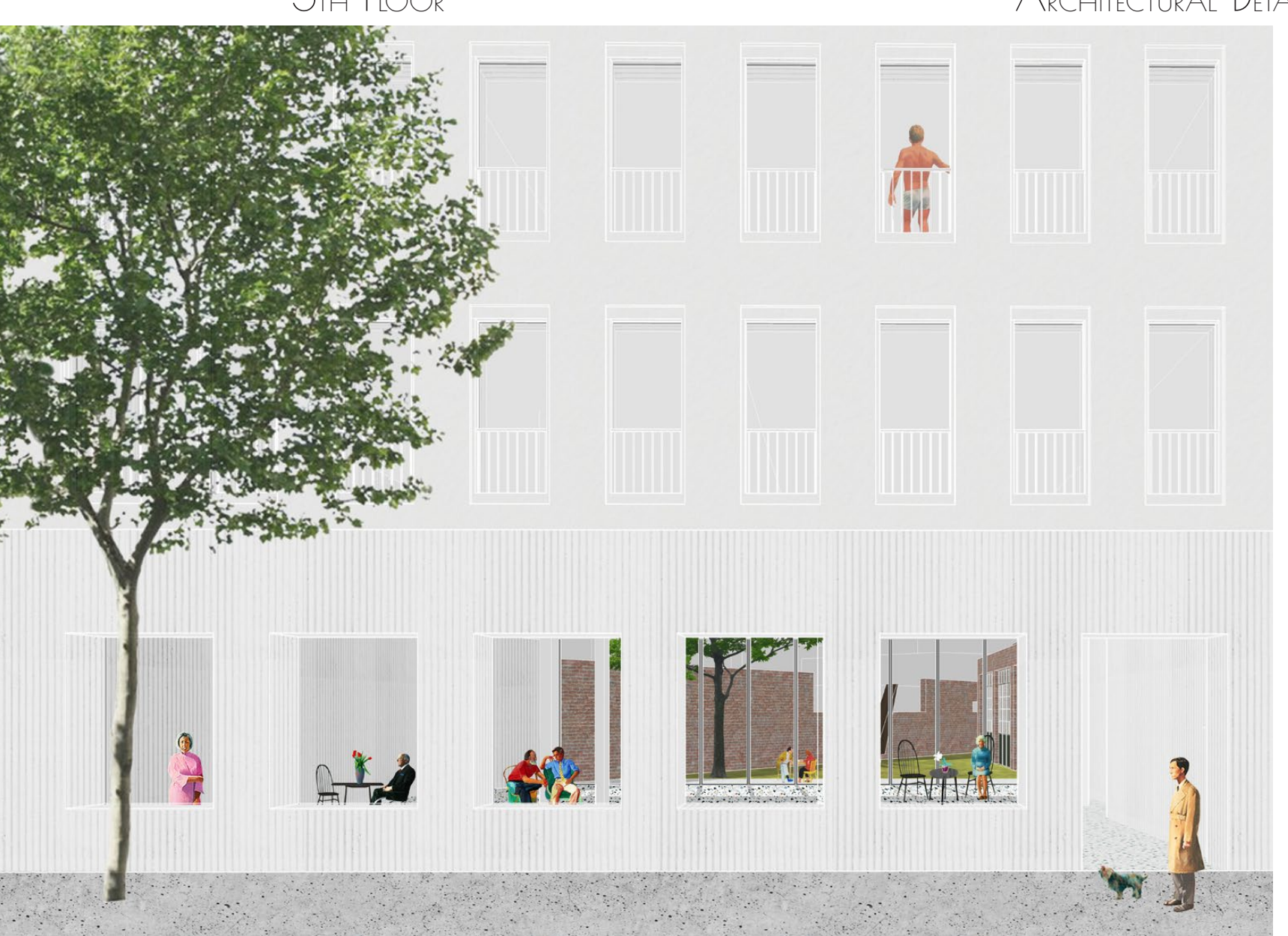
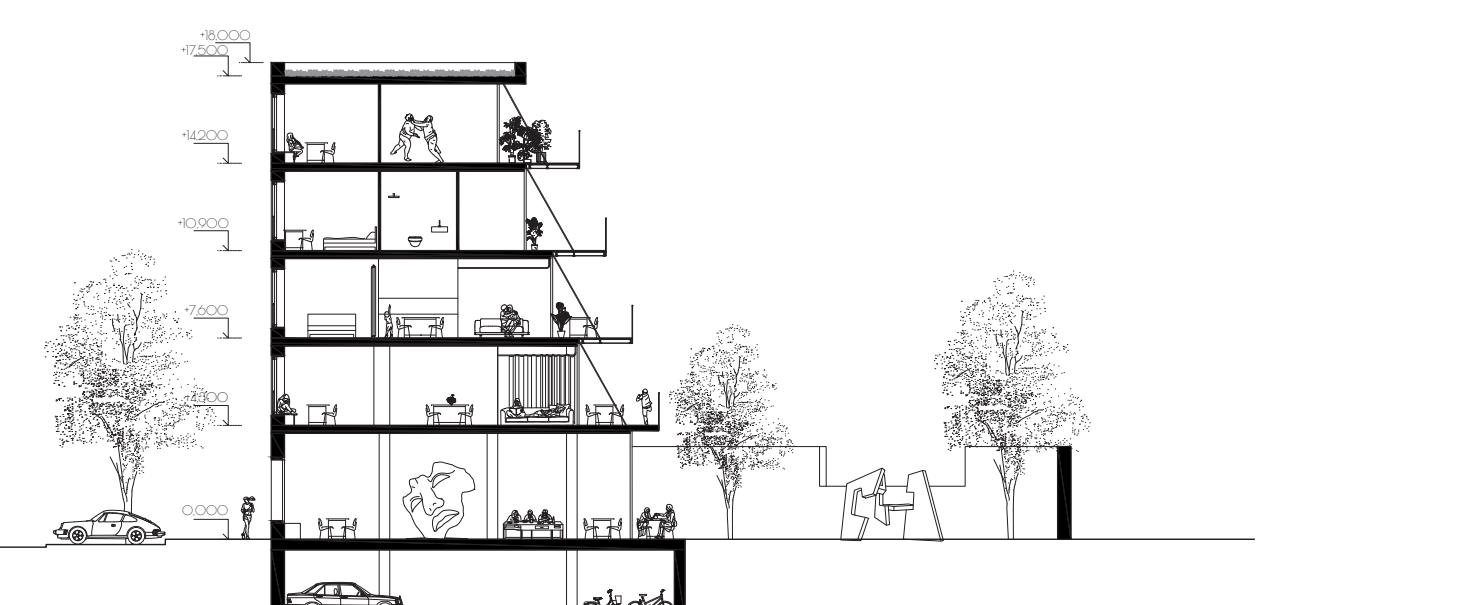
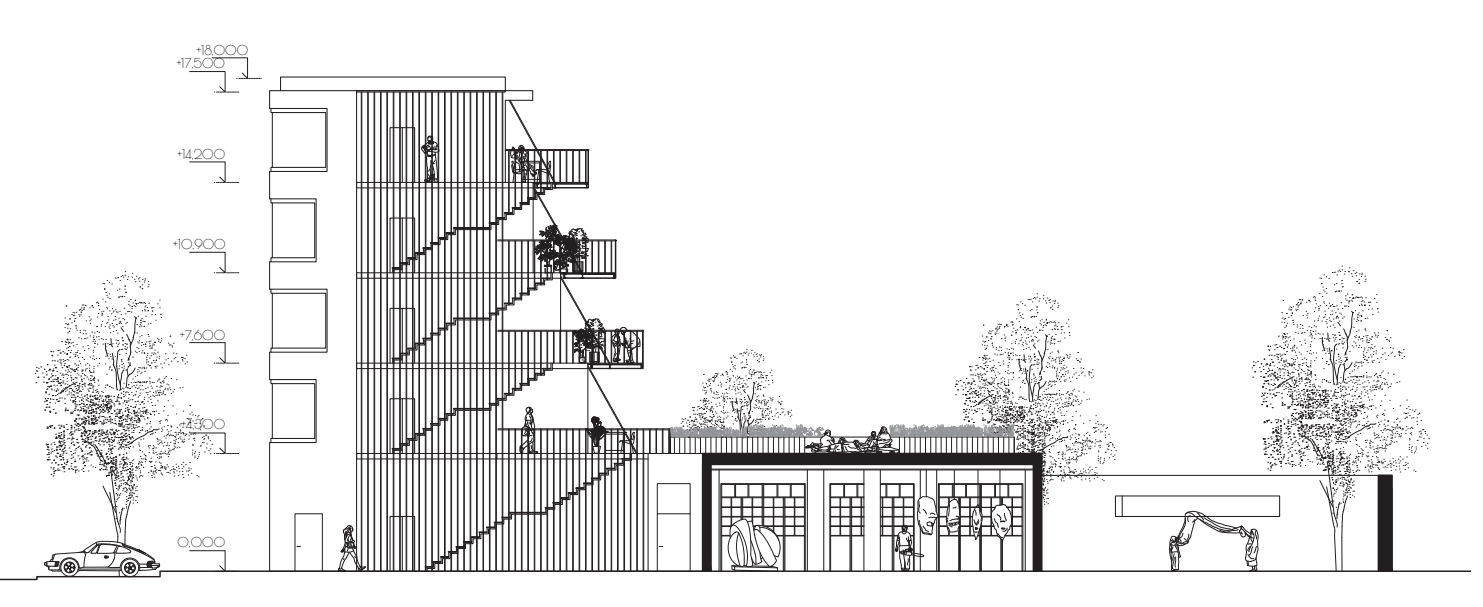
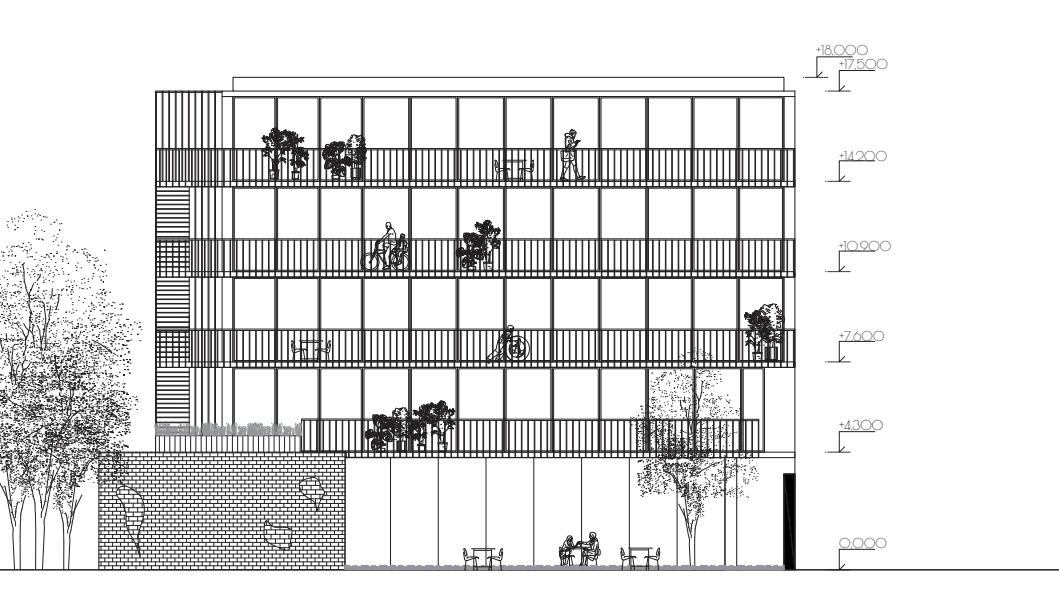
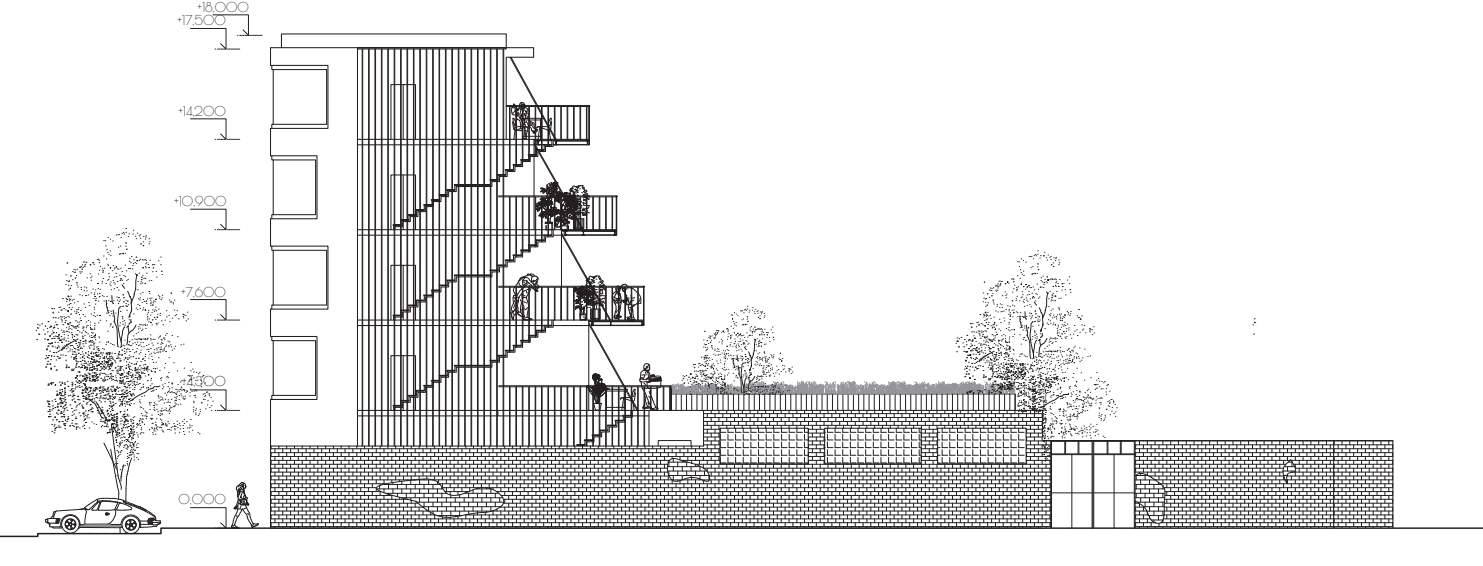
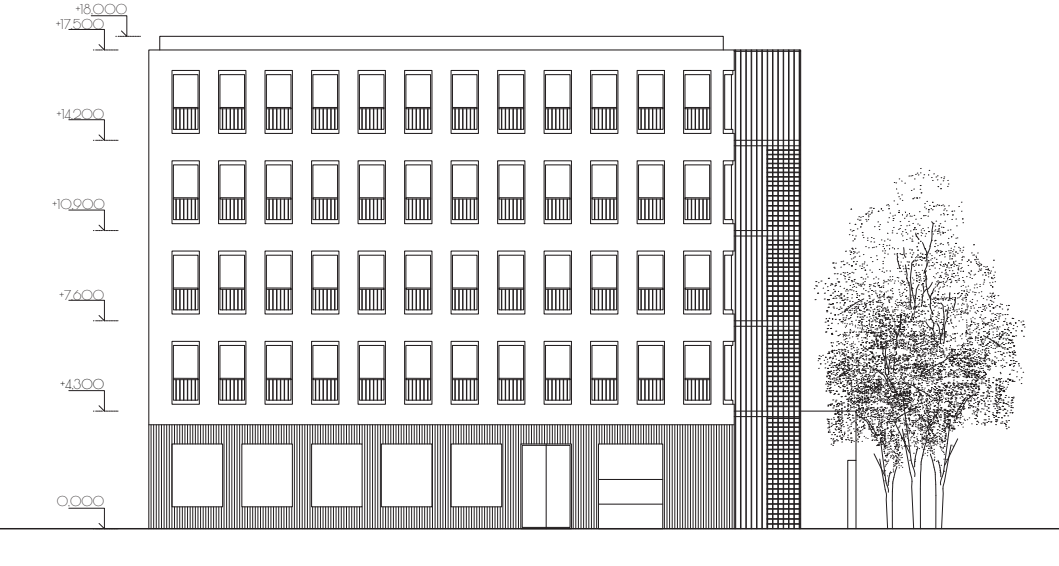
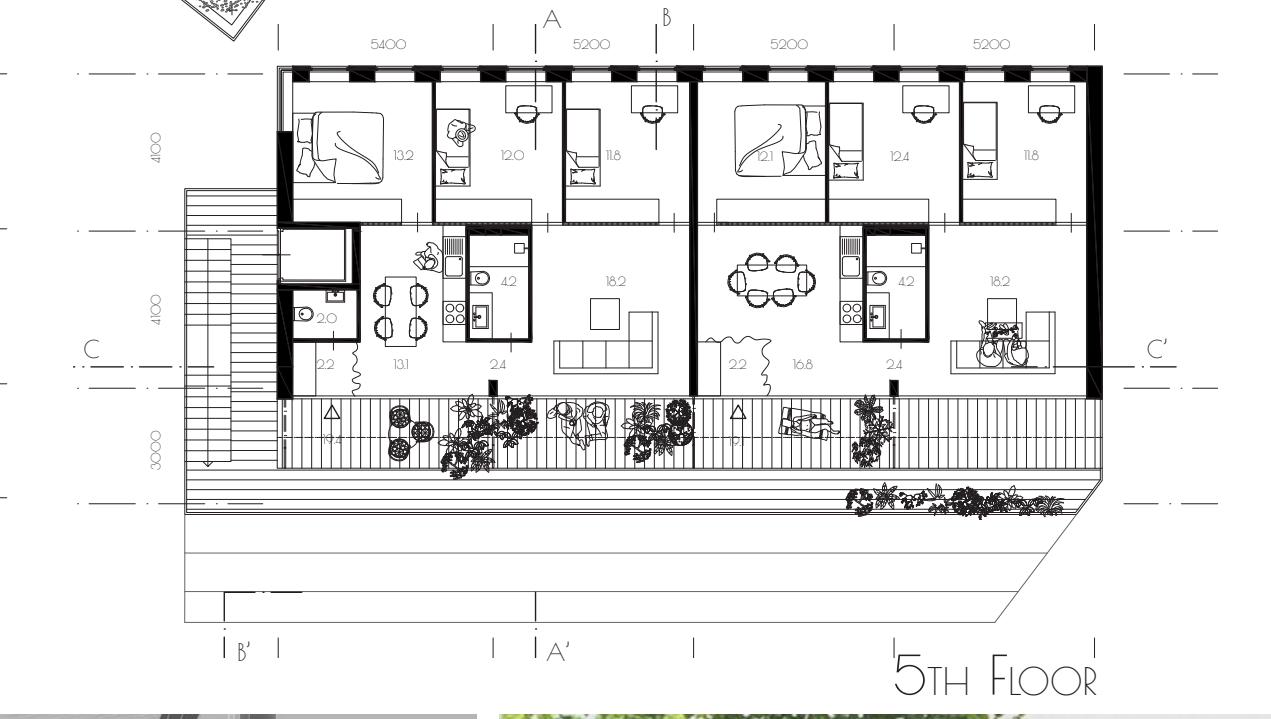
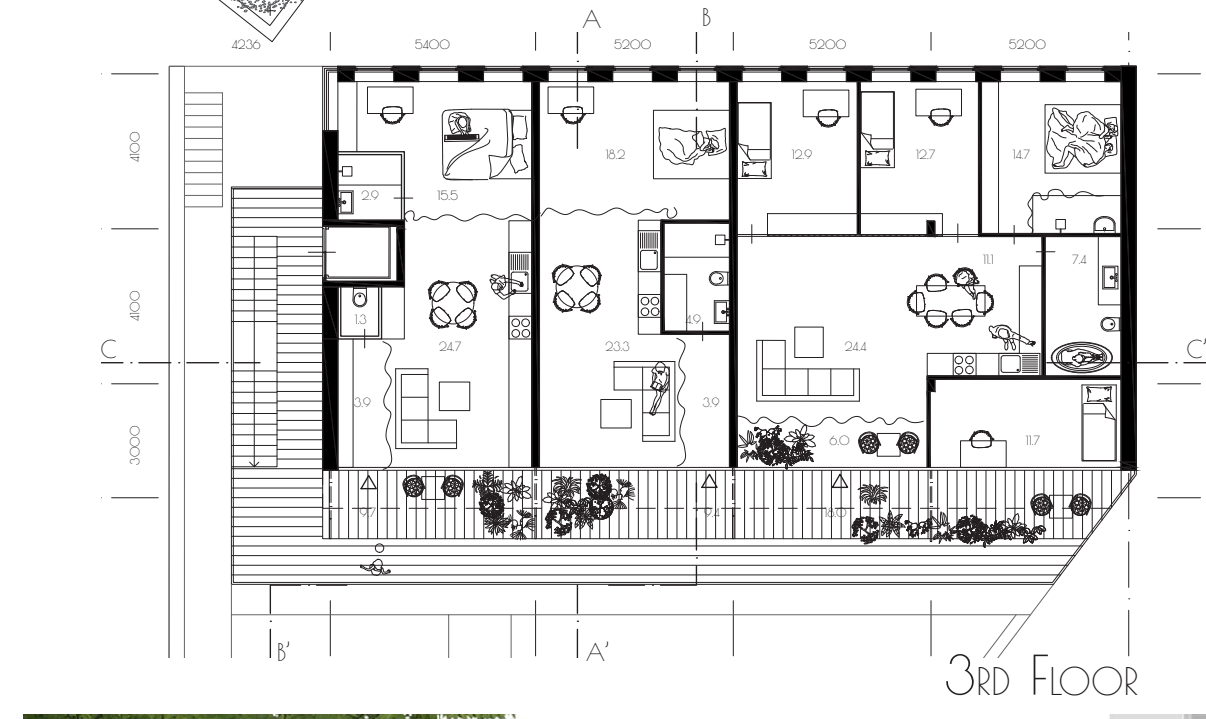
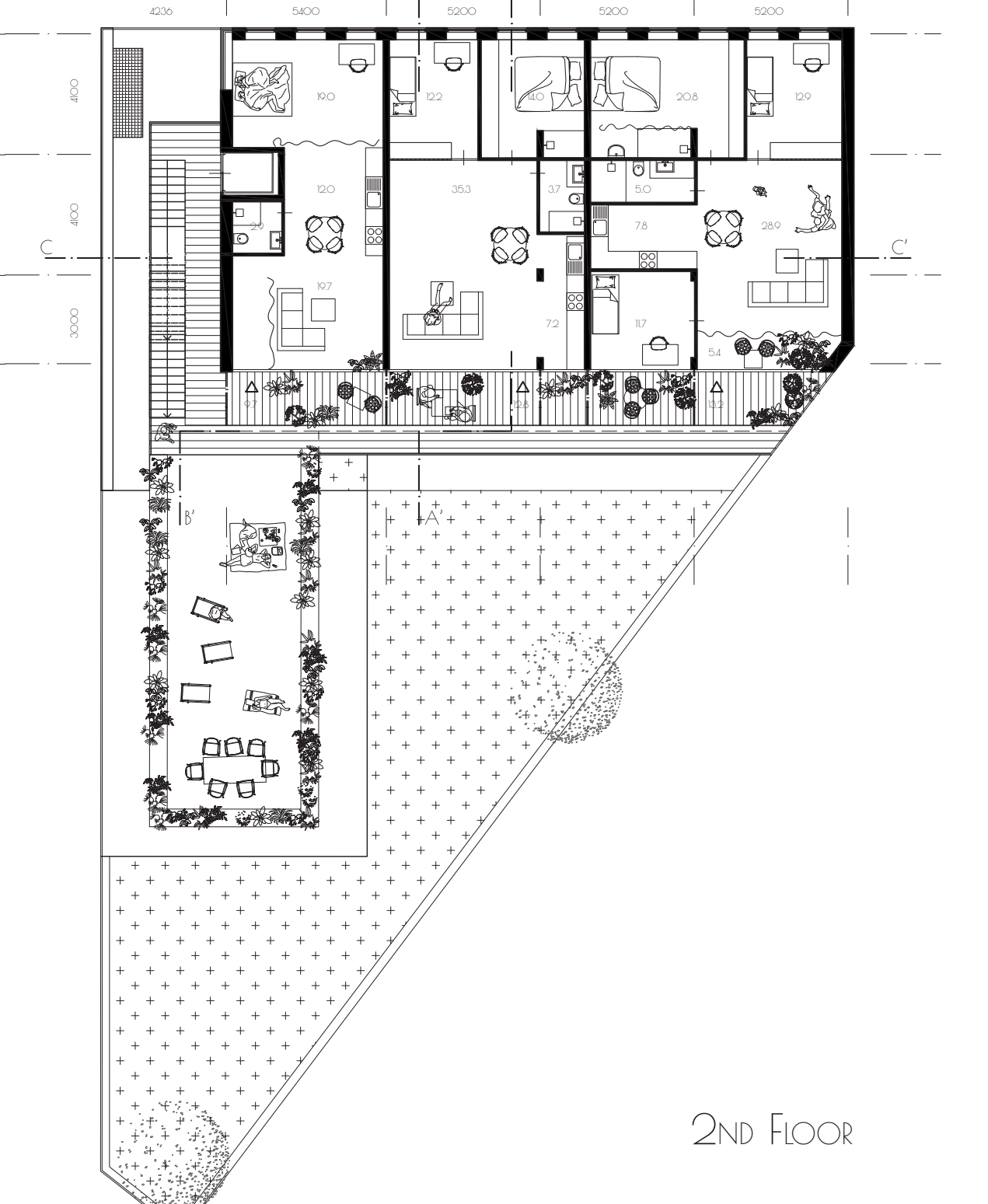
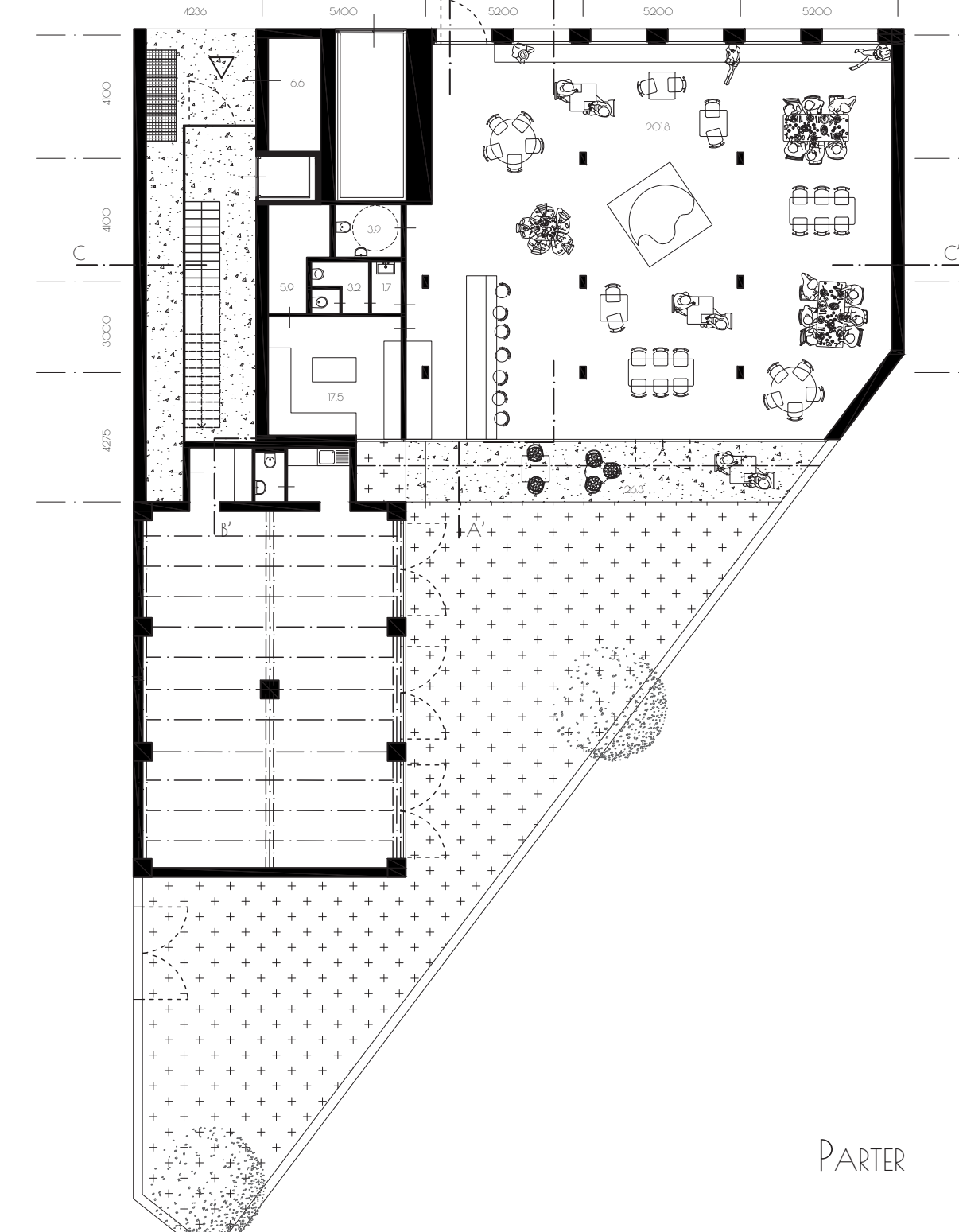
Goal
In today's Berlin is very actual the "Housing question". As there is fast growth of population, there is also needed enough space for living. At the same time, we are located in an area where housing is the major function. Therefore, it was natural to focus on a topic of housing in our site.
This project is mostly focusing on a design of polyfunctional apartment building, but with the added value of the reconstruction and partly adjustment of the former car service building, where the function of an artistic studio stays, as those are the investors of the project.

Idea
When you step to the site today, the very first thing you notice is the amount of greenery in and around the site. The atmosphere resembles "secret garden" hidden behind a brick wall. It's somewhat abandoned, but beautiful space, where person forgets he is still in the centre of Berlin.
This atmosphere is something, what I wanted to conserve as much as possible and inspire the whole design of the apartment building by it.

The Design
I was trying to minimize the footprint of the house, to preserve as much of the garden as possible. A line of trees is growing on the street right next to our site and the terraces are growing inside our site. That's the reason for creating an offset on the northern part of the site. The main entrance is therefore located in this space, also as an entrance to the studio and an emergency exit from the underground parking. To the northern part is situated the exterior staircase and an elevator to the apartment building. The apartment building is designed as a terrace apartment building, where the terraces are oriented to the south and therefore, they are also used as balconies, entrance space to the apartments and as a common social space for the inhabitants of the house. This aspect of the design is giving us another added value of the building - the social value. The private part of the balconies/entrances is divided optically using different floor for the private and the public part of the balcony, and by placing the steel rope which holds the balconies between every neighbour.
The apartments are designed the way, that there is a mixture of apartments and therefore a mixture of the garden as well. The terraces are created as entry apartment from the view to the street and most importantly to the garden as well.
Part of the design is also a reconstruction and an adjustment of the artistic studio. Thanks to the newly built part of the studio, we could get better functional division of the site. In the northern part are situated all the entrances as well as an entrance to the studio. The rest of the garden is separated by the studio building and therefore is only used by the owners (sculptor and an architect). There is also the possibility to use the garden from the terrace in the 5th floor of the building. This also gives us the possibility to connect the artistic studio/garden with the courtyard in the former and therefore with the street as well and create somehow a gallery with the works of the owners.
The inhabitants of the house primarily don't have the permission to use the garden, but thanks to the balconies are in close contact with it and therefore feel its atmosphere.
Although, people living in the house have the possibility to use the roof of the studio as a common terrace/garden.



KONZEPT



BERLIN

MARCHLEWSKISTRASSE 36

GARANT: Prof. Ing. arch. Vladimír Šmrkovič, PhD.
 MENTOR: Ing. arch. Martin Kusý
 STUDENT: Bc. Petra Jablonická
 6th Year / Winter semester
 2019/2020
 STU BRATISLAVA,
 FAKULTA ARCHITECTURY
 STUO II