

ELEMENTS OF HEALING

- Color
- Water
- Material
- Sun
- Therapeutic Landscape

The strategies are:

- 1) Sense of control and privacy
- 2) Social Support
- 3) Physical movement and exercise
- 4) Access to nature and other positive distractions

Planning parameters :

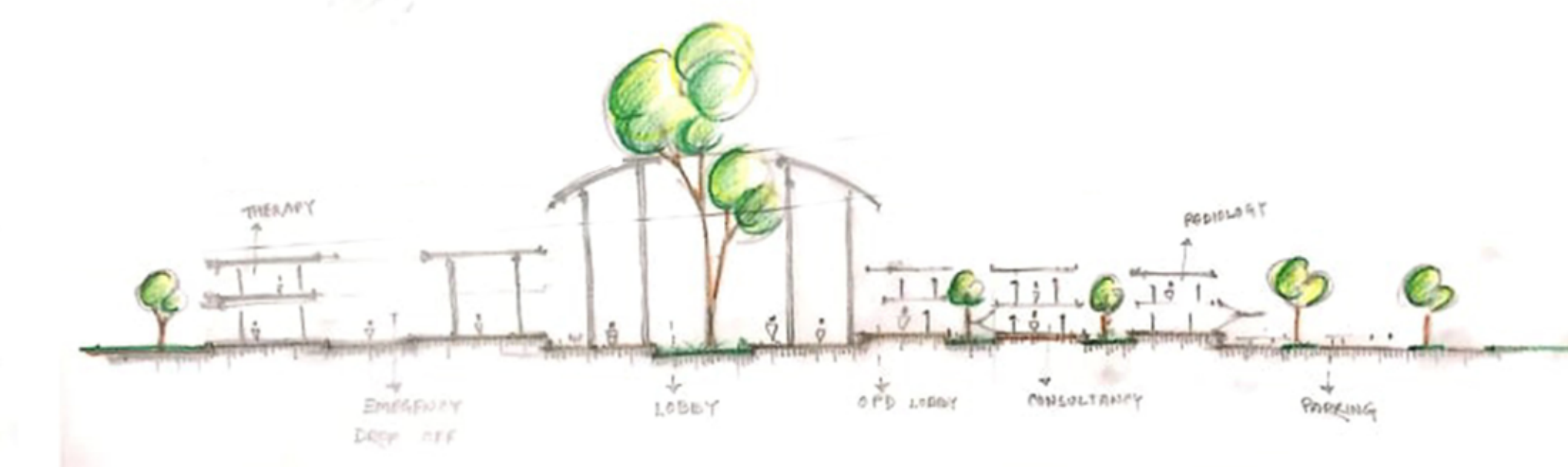
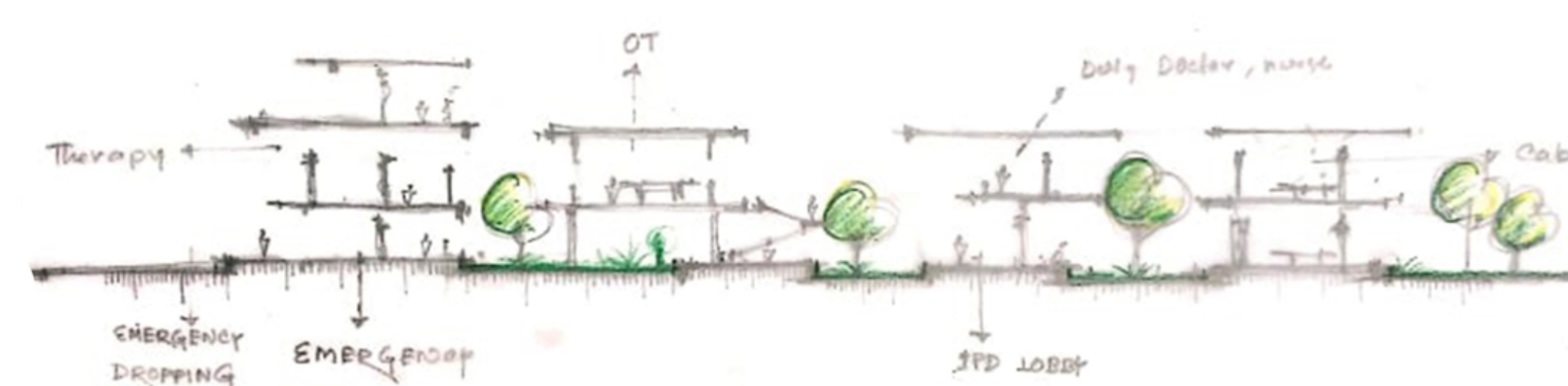
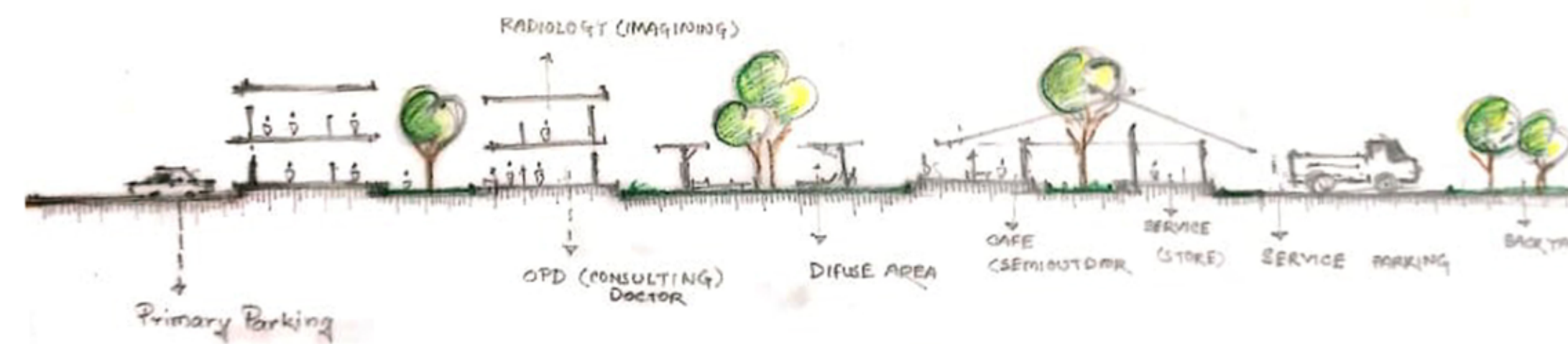
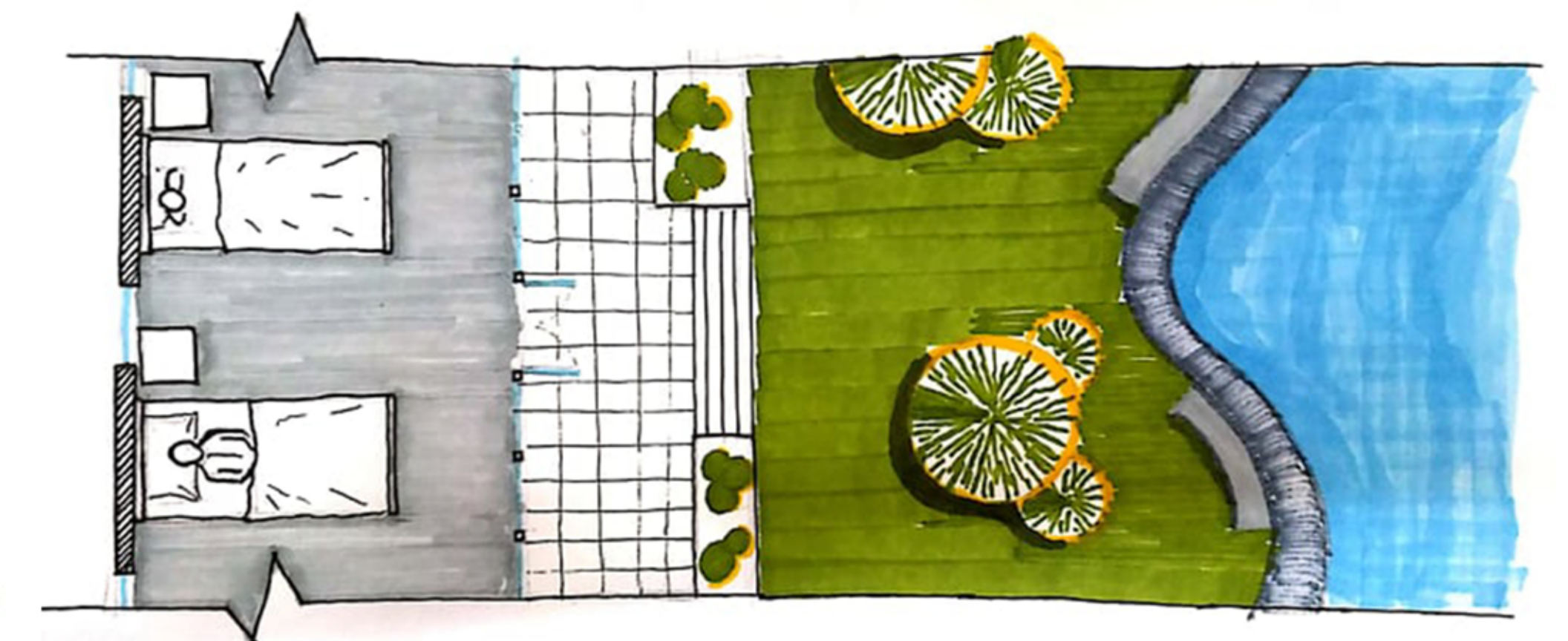
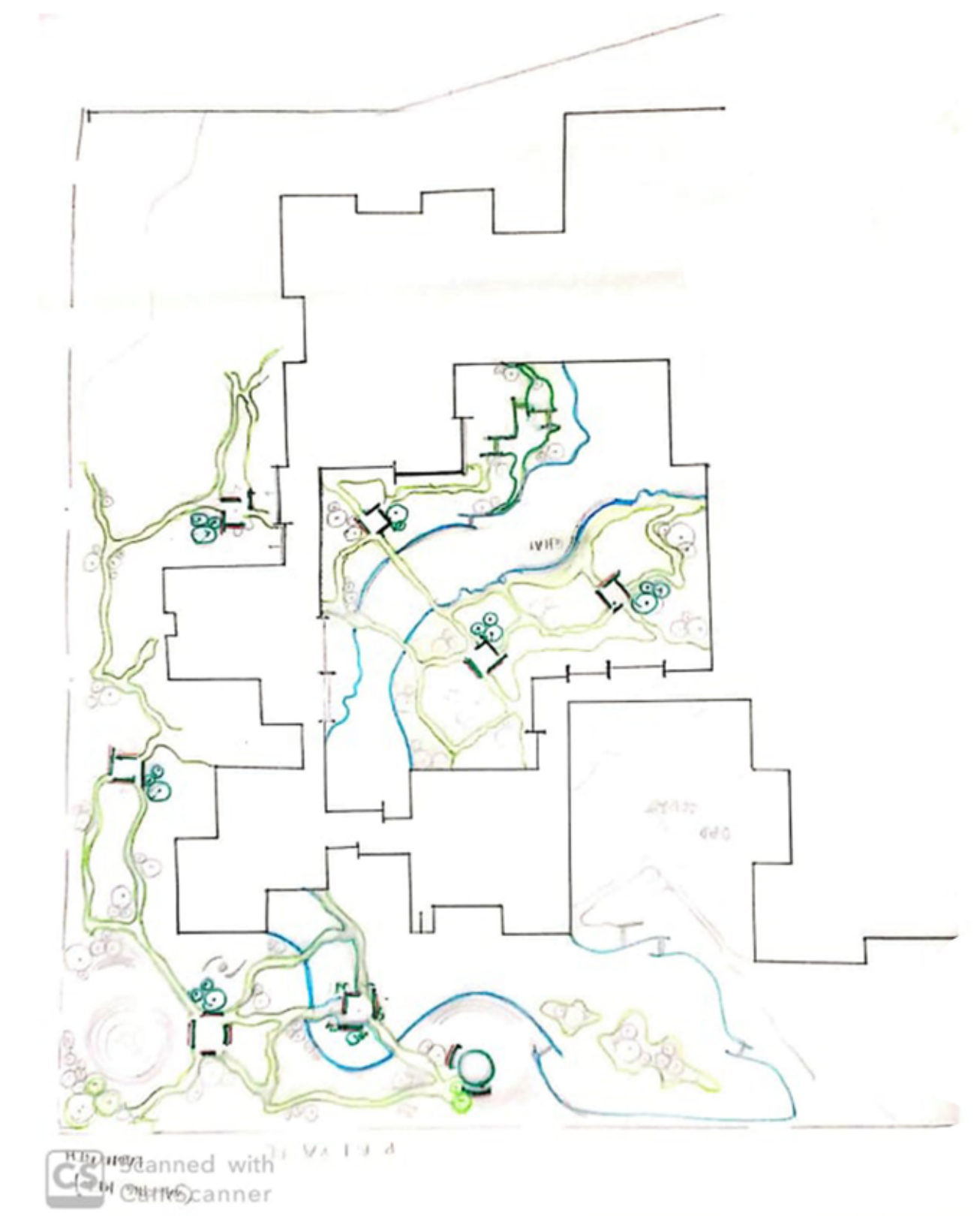
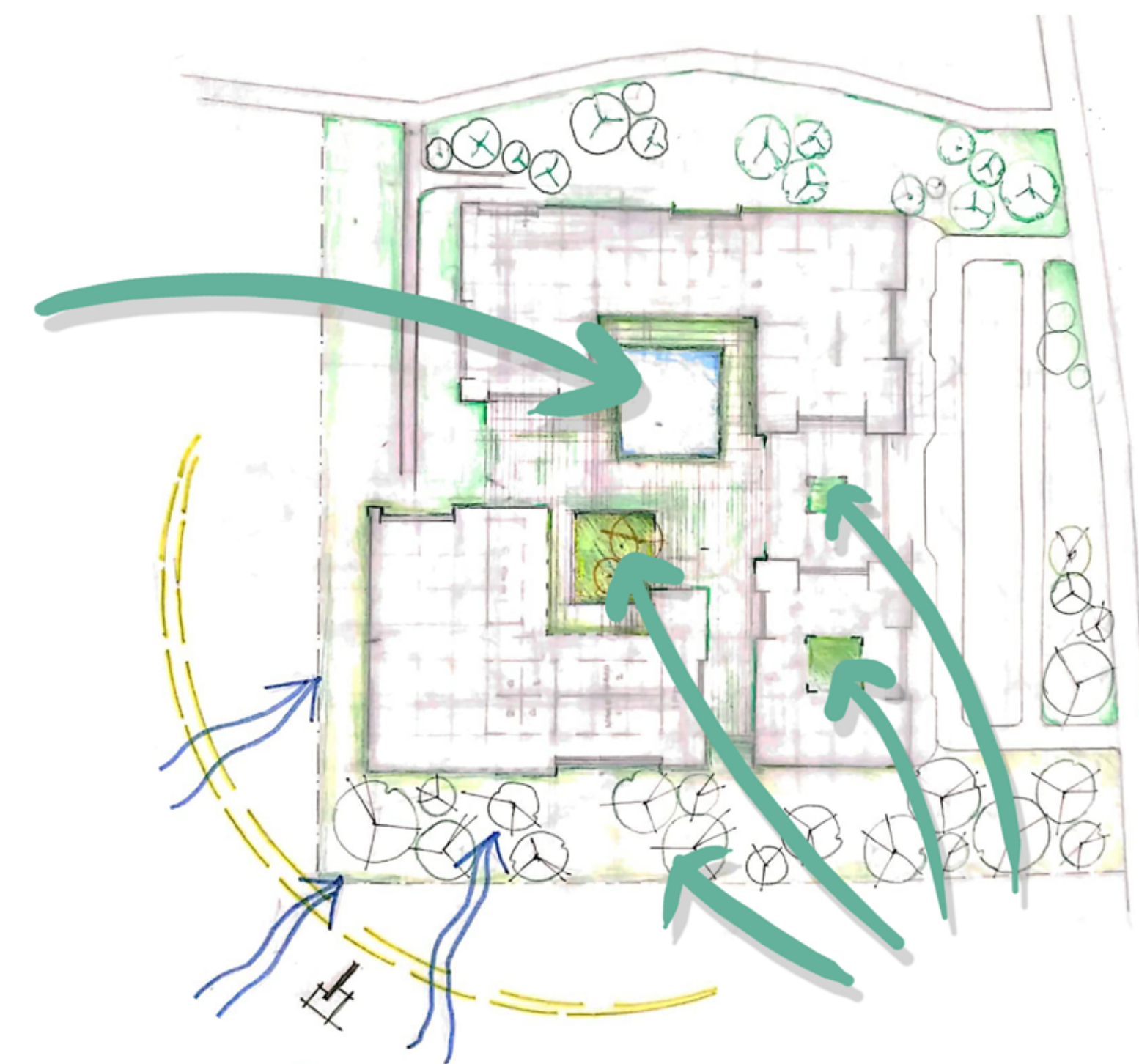
- convivial entry
 - free and open atmosphere
 - Directly accessible green
 - PUBLIC SPHERE ENVELOPES THE PERSONAL SPHERE
- Giving the possible privacy with some social spaces are necessary and are stated as a basic qualification of rapid recovery.
- scheduling of vistas

Analysis of similar Healthcare

Category	Case 1 (Khulna medical college hospital, Khulna)	Case 2 (Sir Sulimullah medical college hospital, Khulna)	Case 3 (Fortis hospital , Gurgaon, India)	Case 4 (Thesis project – 250 bedded general hospital , Badda, Dhaka)
Plan organization				
Section				
Typology	General	General	General	General
specification	Khulna medical college	Mitford hospital	Fortis hospital	
Visual connection	poor	Poor	Quite positive	
Physical connection	Poor such as a huge pathway between OT and vertical circulation.	Central core connection, functions are efficiently connected.	Circulated in a better way	
Natural ventilation	Though corridors are opened with the court , the ventilation system are poor.	Mechanical ventilation and a enclosed space.	Natural ventilated to some extent	
Formal expression	Gave an industrial expression	Compact expression	Functional expression is good	
Natural integration	Courts are misused	negative	Nature integrated in some way	
Affordability	For regional serving	For regional serving	Priorities of high economy	
Eco efficiency	Not efficient	Not efficient	Efficient	

স্বভূজ নিয়াময়

Making an optimal healing environment through restorative design



Functional Needs

Summary	
1. OUT PATIENT DEPARTMENT : (OPD)	13980 s.ft
2.CONSULTING AREA : (OPD)	
3. IN-PATIENT : (IPD)	11520 s.ft
i. WARD	
ii. CABIN	5600 s.ft
iii. BURNING UNIT :	22000 s.ft
iv. I.C.U. :	4000 s.ft
v. C.C.U. :	4000 s.ft
vi. SEPTIC WARD :	1800 s.ft
4. EMERGENCY :	4764 s.ft
5. DIGNOSTIC AND TREATMENT :	6600 s.ft
i. SURGICAL SUITE :	
ii. PATHOLOGY :	2400 s.ft
6. BLOOD BANK :	2140 s.ft

