

-Indoor climate would not be given same importance in every built form level
 -In this context, indoor -semi outdoor- outdoor relationship is a great aspect.
 Compact built form are discouraged.
 -In urban area, maximum of the built area having no access in green

Why hospital ?

-Building design must enable a healthy in-door climate
 -Indoor outdoor space would be a good visual and spatial connection
 -Accessing the green would be integrated with bulid form
 -Concerning Light and natural ventilation
 -Indoor air quality improvement
 -Considering indoor acoustics exposure to radiation and degassing.
 -Mass awareness about health issues

Global

Social	Economic	Environmental
Weak primary health care. Non communicable diseases. Vaccine hesitancy.	Fragile and vulnerable settings. Vaccine hesitancy.	Air pollution and climate. Antimicrobial resistance.

National

Social	Economic	Environmental
Infectious and communicati on diseases. Childhood malnutrition. Higher population density.	Childhood malnutrition. Higher population density. Unsafe food.	Non environmental sanitation. Non sustainable infrastructure.

Regional

Social	Economic	Environmental
Lack of medical officers. Lack of social awareness about health.	Lack of modern facilities in healthcare. Lack of enough beds in hospitals. Lack of medical officers.	Non environmental sanitation. Non sustainable infrastructure

42%

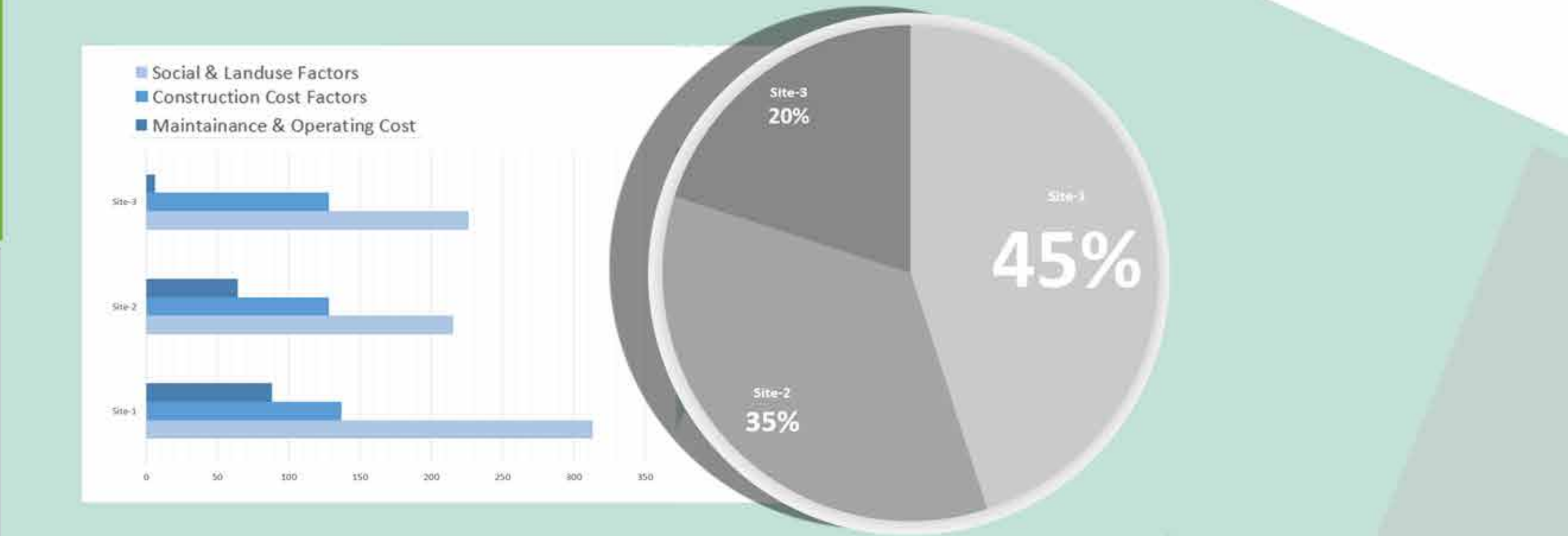
0.8 Malaria incidence (Per 1000 population at risk)

3.05 physicians per 10,000 population
1.07 nurses per 10,000 population

TUBERCULOSIS Cases
225 (per 100000 population in)

467 government hospitals at the upazila level
18,791 hospital beds
12,584 community clinics

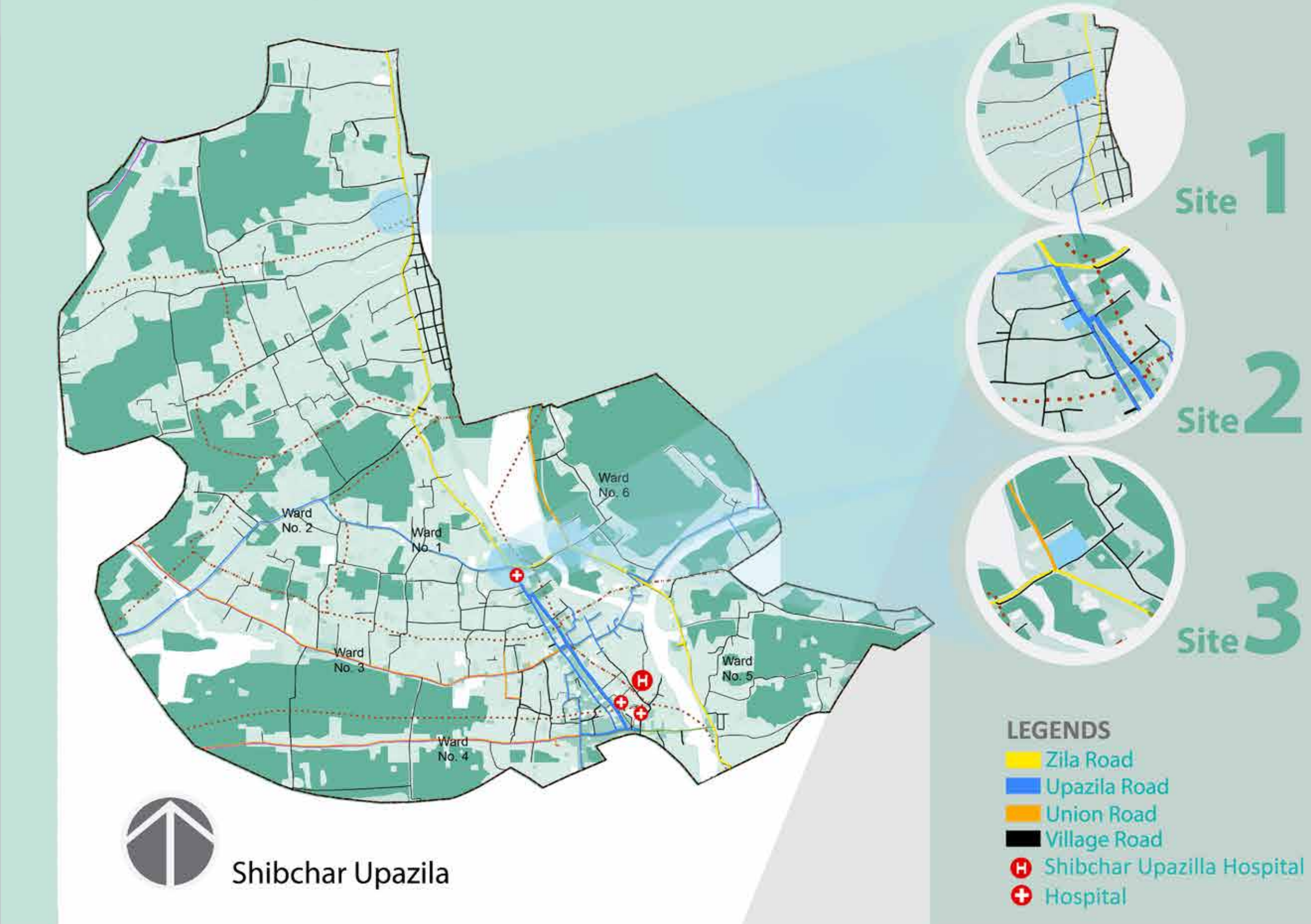
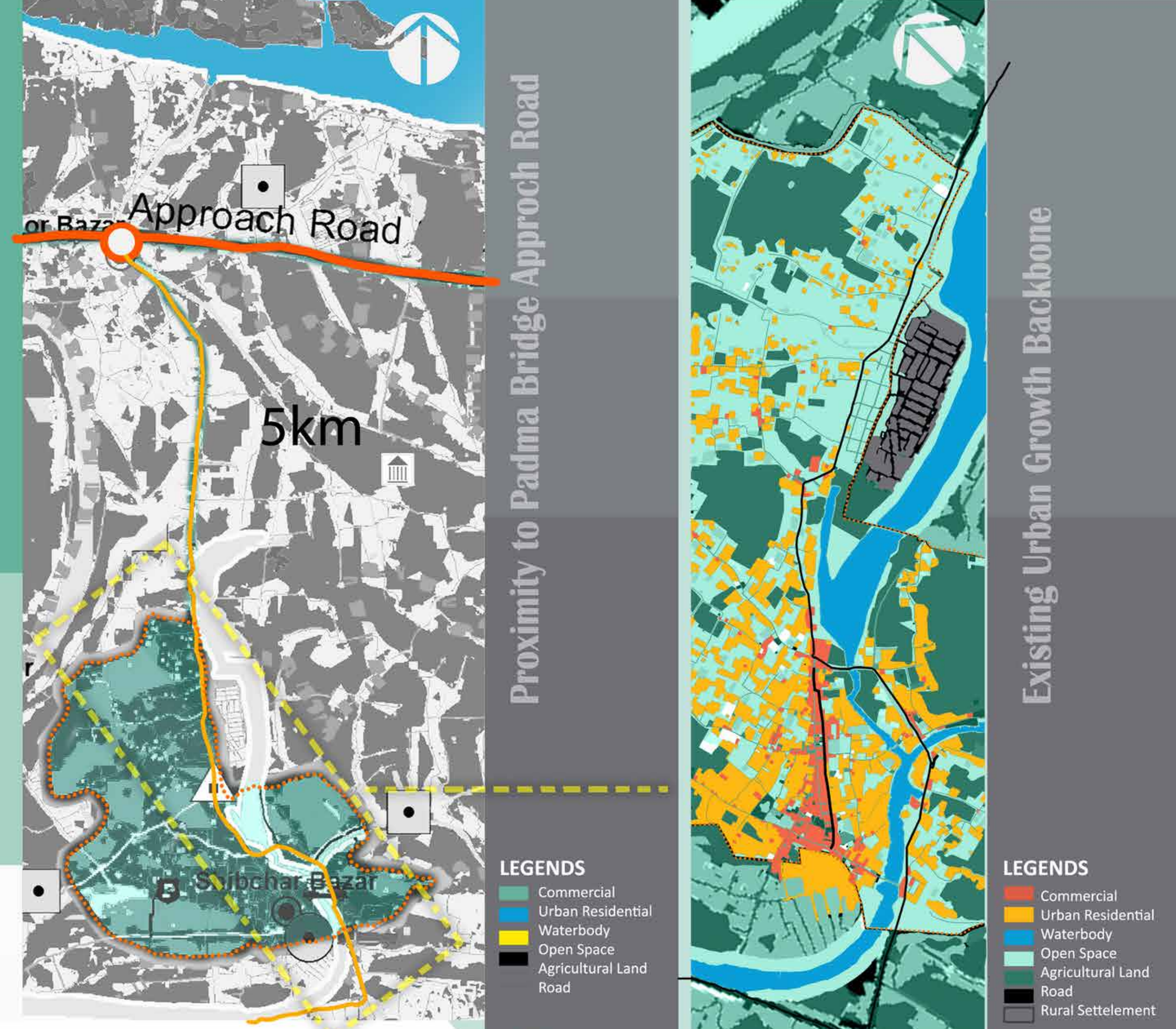
Comparison of proposed sites



Location and Area

Shibchar Upazila is located between **23°15'** and **23°30'** north latitudes and between **90°05'** and **90°17'** east longitudes. The upazila is bounded on the north by the river **Padma**. According to BBS Shibchar upazila occupies an area of **332.90 sq.km**

Year	Union	Population	Density (per sq km)
2001	19	3,24,438	1008
2011	19	3,18,220	989



Facility Type	Total (No.)	No. of Beds
No. of Upazila Health Complex	1	50
No. of Union Sub-Centres	3	0
No. of Union Health and Family Welfare Centres	15	0
No. of Rural/Urban/Thana Dispensaries	0	0
No. of Community Clinics	38	0
No of Trauma Centres	0	0
No. of MCWCs	0	0
No. of Chest Disease Clinics (TB clinic)	0	0
No. of Private Clinics/Facilities	6	56
No. of NGO Clinics/Facilities	1	0

