



Grow Box

Inspireli competition



Amphitheater in Burkina Faso

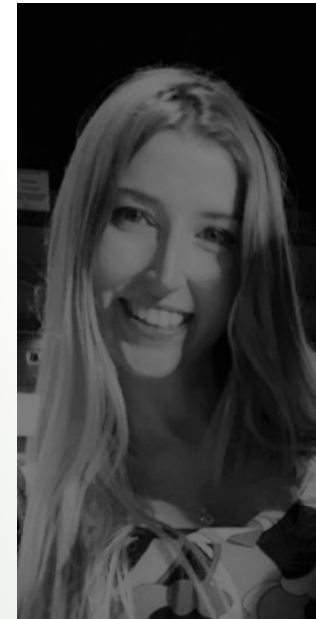
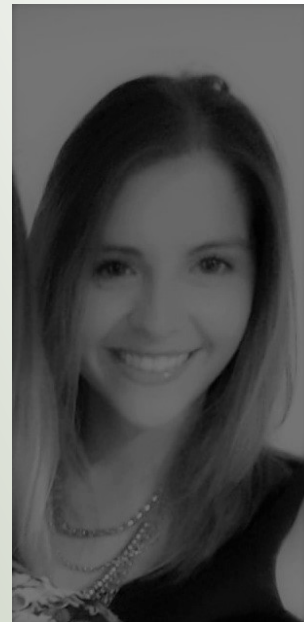
TALLER COMBES

Taller de proyecto VII

Authors

Enrico, Julieta

Figueroa Robles, Denisa



Location

África



Burkina Faso

Uagadugú

- The city of Uagadugu, the capital of Burkina Faso, is the most interesting destination in the country. It is a place of great artisanal and archaeological collection. Its visitors are surprised by its beauty and diversity.
It is characterized by its different ethnic groups..



Context

- Burkina Faso is manifested in earth architecture, in music, dance, cinema, literature, festivals. They have many objects and figures produced for sacred contexts.

The country has different historical backgrounds and political cultures.



Landscape

It is a landlocked country, flat, with an average altitude between 650 and 1,300 feet (200 and 400 meters) above sea level. There are some elevations in the west, the highest point is Tenakourou (2457 feet; 749 meters).



Location and Geography

The country covers 105,869 square miles (274,200 square kilometers) in central West Africa, northern Ghana and the Ivory Coast. Most of the old Alto Volta lies within the area of influence of the three northern tributaries of the Volta River, the Mouhoun, the Nazinon, and the Nakambe (formerly the Black, Red, and White Volta). The capital, Uagadugu, is located almost in the geographic center of the country.



The vegetation

Vegetation varies with thick trees and shrubs in the south and almost desert conditions in the north. The landscape changes drastically according to the seasons. In the driest months, extreme drought and Harmattan, a cold, dusty wind from the Sahara, dry up all vegetation. Widespread man-made forest fires add to the burned aspect of the landscape. With the first rains, the leaves sprout from the trees and bushes and the grass of the savanna grows several meters in a few months.

Climate

The tropical climate has a wet season and a dry season. In the northern Sahel area, 150 to 600 millimeters of rain fall between June and September. In southern Sudan, rains generally begin between June and September.

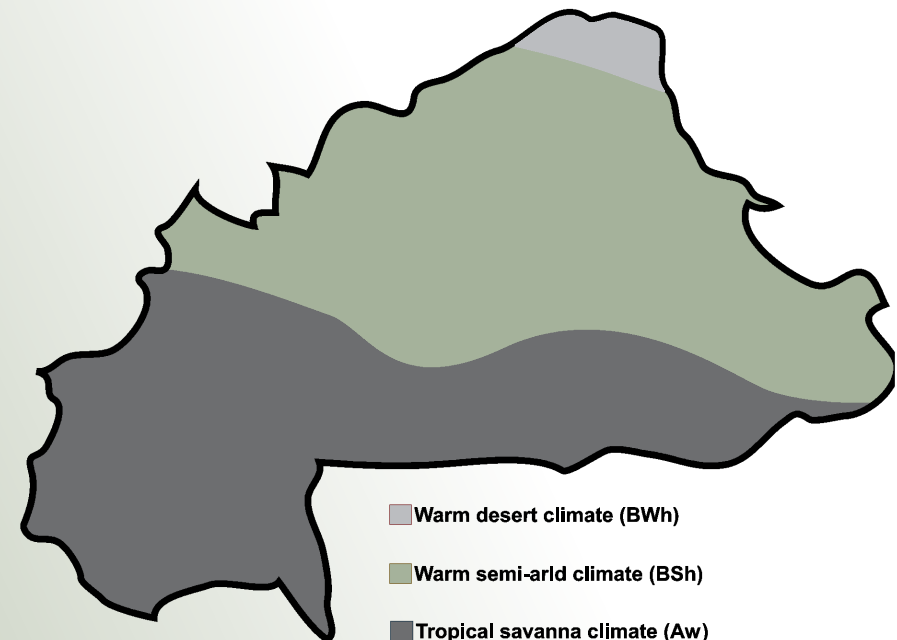
In the southern Sudan area, the rains generally begin in May and end around October. Annual rainfall here is 35 to 51 inches (900 to 1,300 millimeters). The rains show extreme variations from year to year, in both time and quantity.

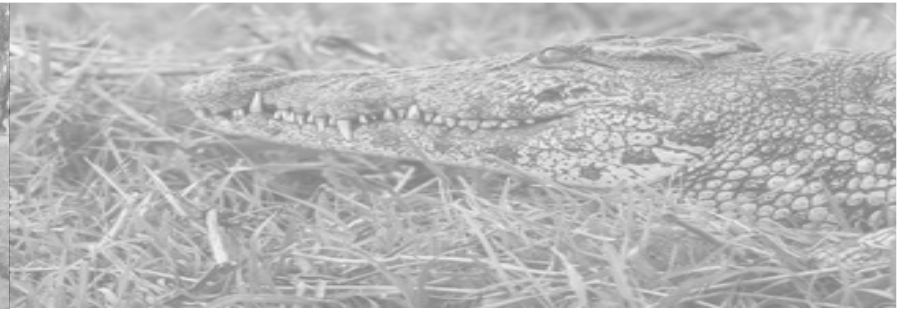
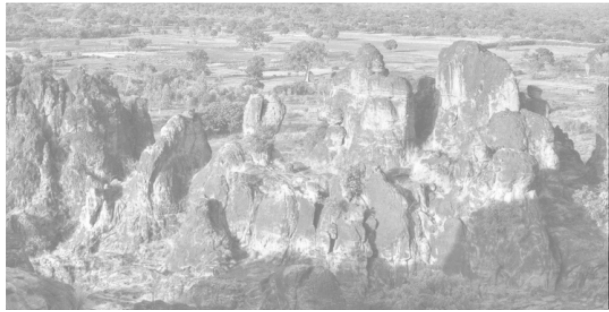
The average minimum temperature during the cold season is 16 degrees Celsius. During the hot season, from March to May, temperatures reach a maximum of 43 degrees Celsius.

Uagadugu's climate is mainly affected by the harmattan and monsoon winds.



Burkina Faso map of Köppen climate classification





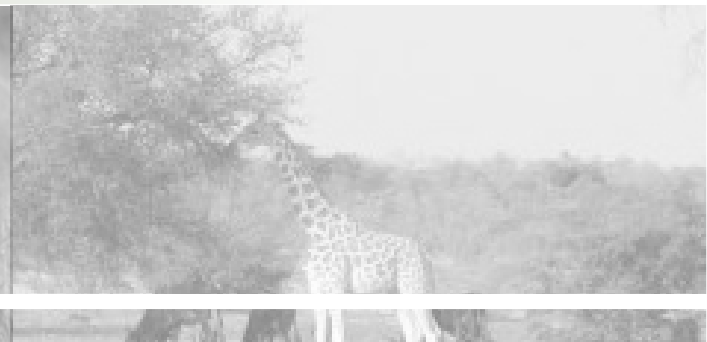
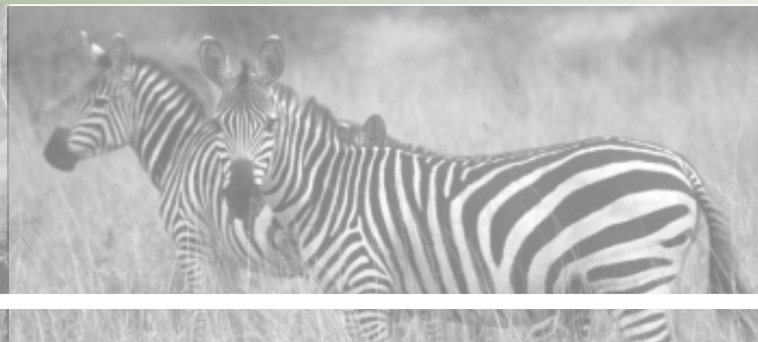
Places to visit in Uagadugu

Stop Animalier: Here you can see lions, ostriches, elephants, monkeys, hippos, in general, all the animals that are associated with the African savanna.

Nazinga Reserve: This is a real safari. Elephants have become a peculiar decoration with which you can take photos of yourself. Antelopes, monkeys, wild boars and small crocodiles also live here, as you can see, the animal world is really unique.

L`Unité pédagogique: this place houses animals in a state of a kind of freedom. This mix of British garden and biosphere covers over 8 hectares and also serves as a museum on the country's history.

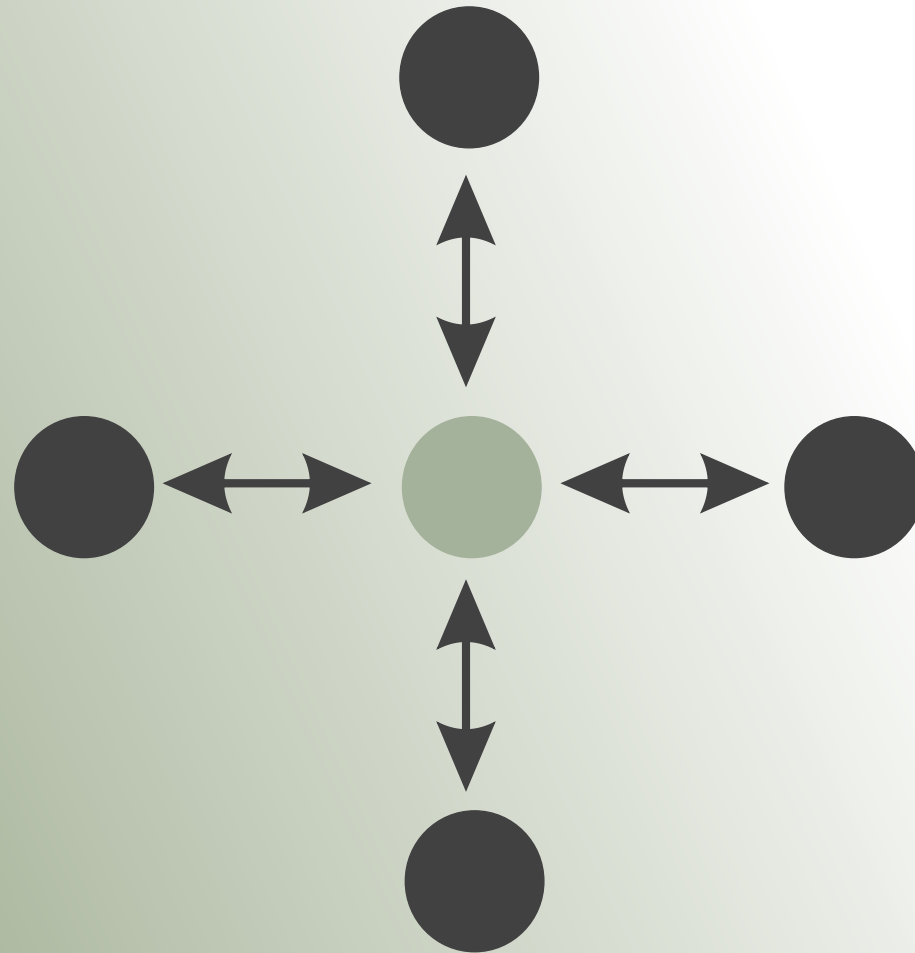
Bangr Weogo Park, Saint-Croix Animal Park, among others.



Idea

Urban proposal

Cultural meeting point



Relationship with the city

Original terrain



-  Ground
-  Streets
-  Channel

Urban intervention



- Streets
- Green sectors
- Avenues (prioritizing access)
- Waterfront and sidewalks with promenade

Field intervention



▲ Arrow, as a compass analogy, indicating access to crop boxes

It is sought that the building connects with the urban proposal generated a sector with various walks with connection to nature

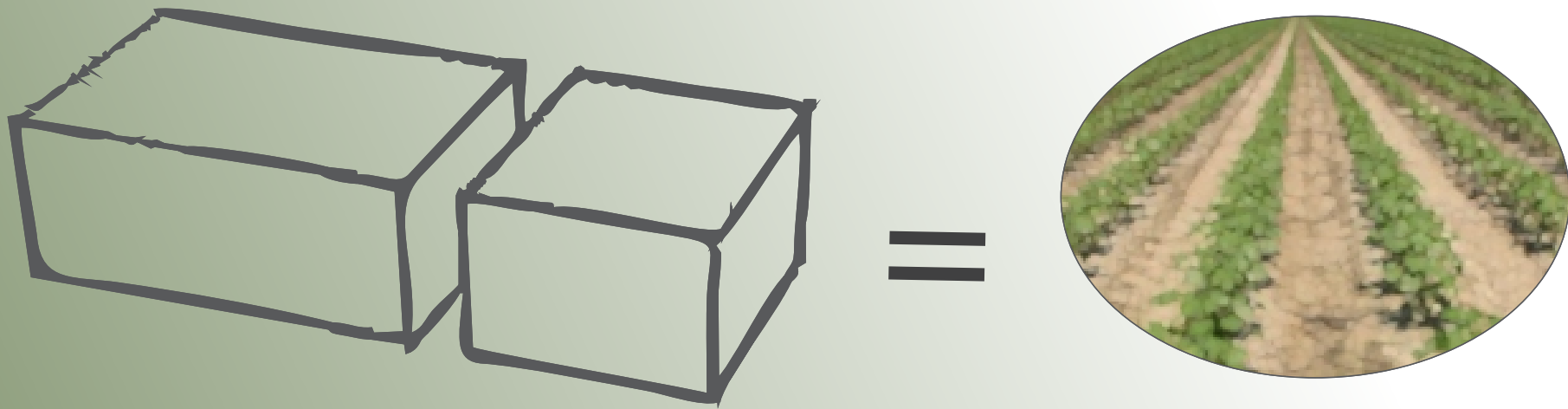
Building proposal

Container box of their culture



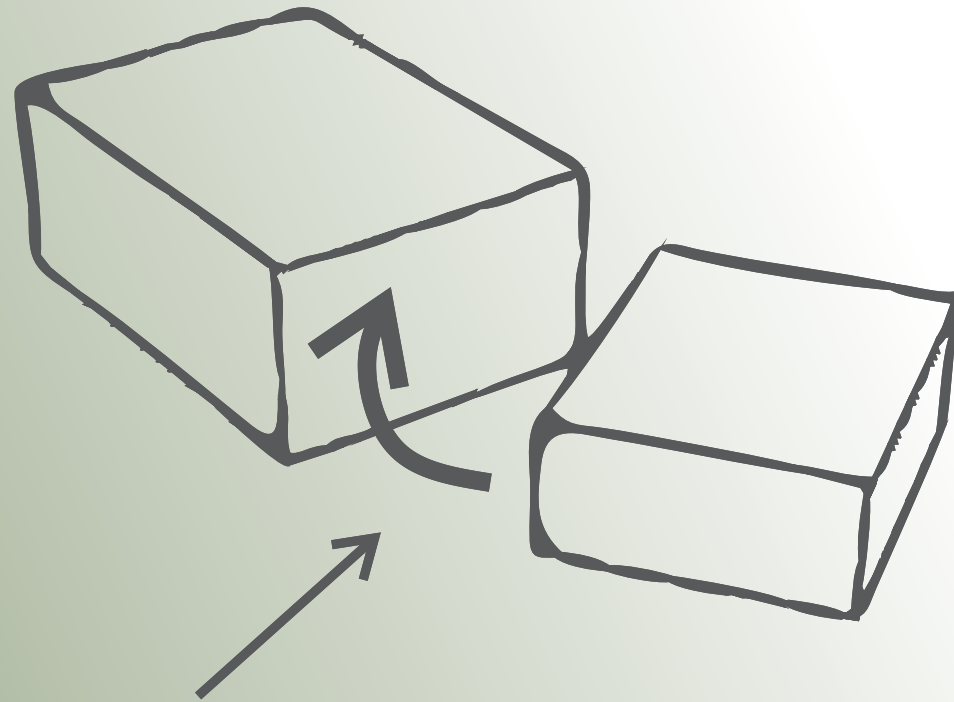
symbol of the cultural diversity of the place

The box is divided into two parts. Representing various crops of the place, it seeks to merge them with the city and its surroundings, relate them to its culture



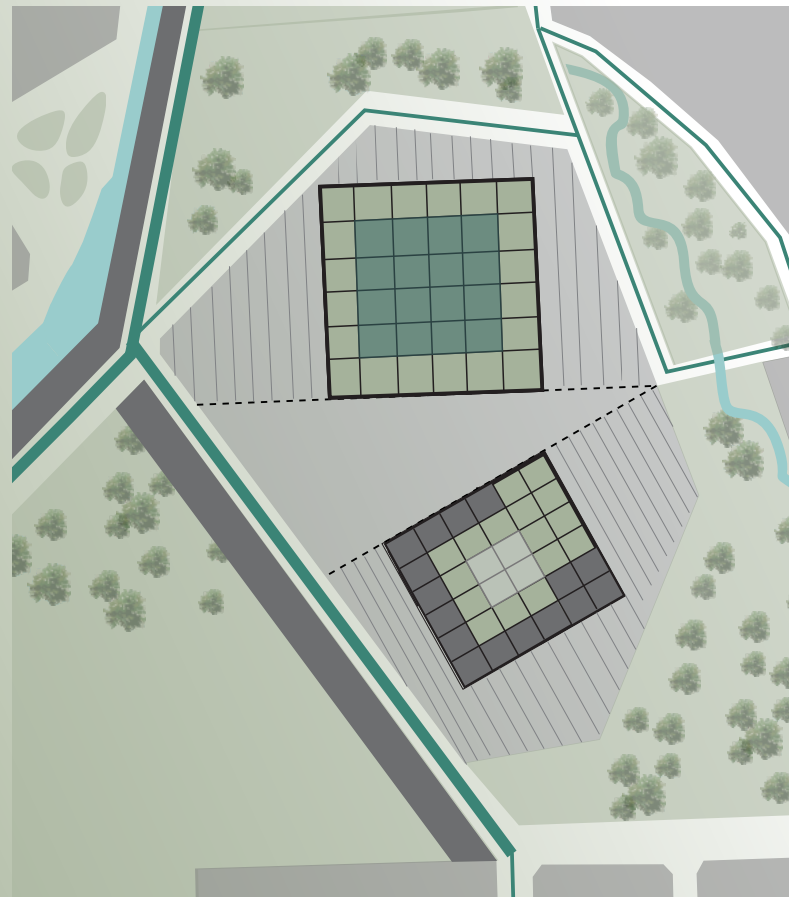
Modulated sub-boxes, their centers are subtracted





Box opening



A turn is made so that the box opens to the outside allowing the city to enter it

Distribution in the field

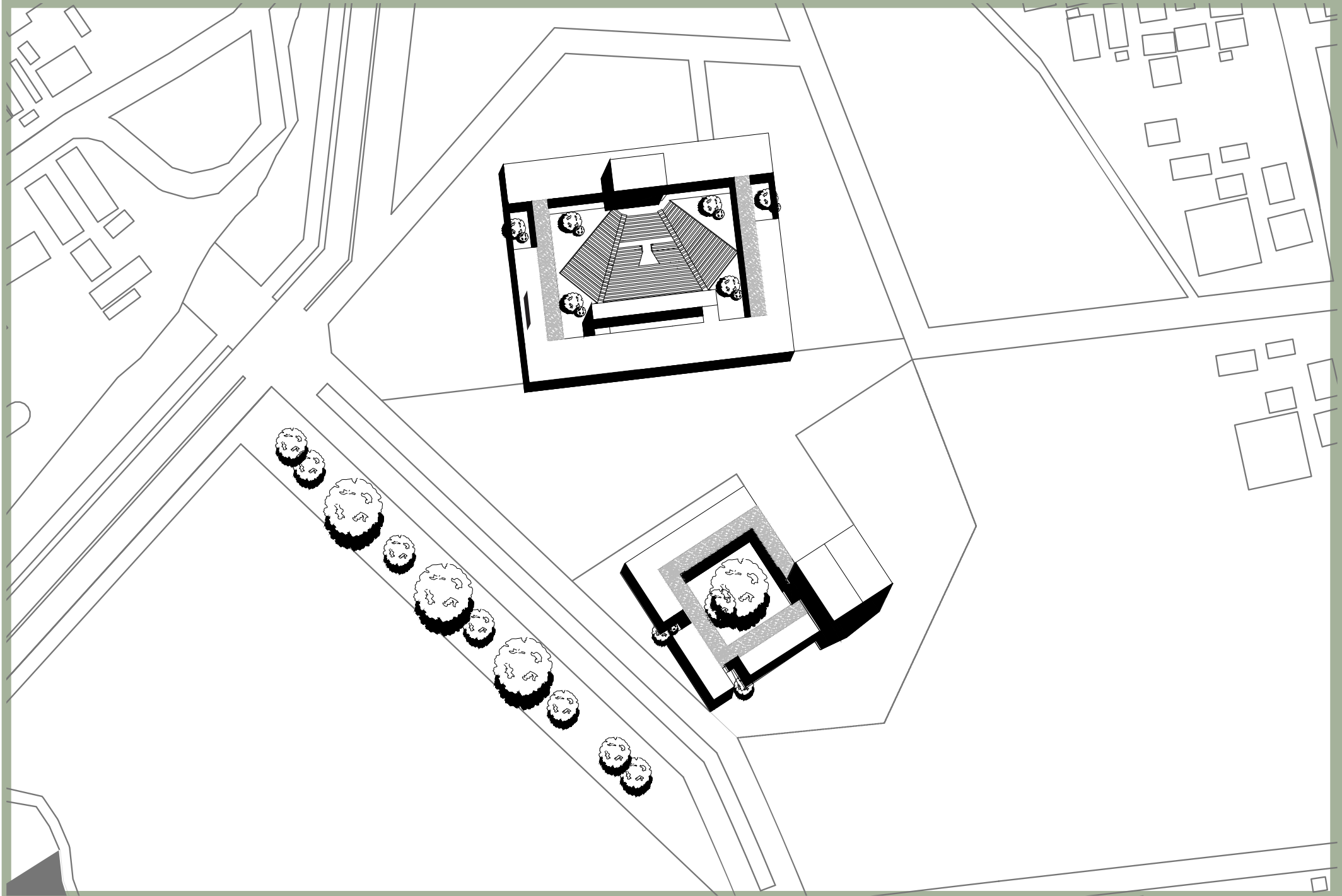


-  Crop box
-  Amphitheater
-  CDC
-  Crops

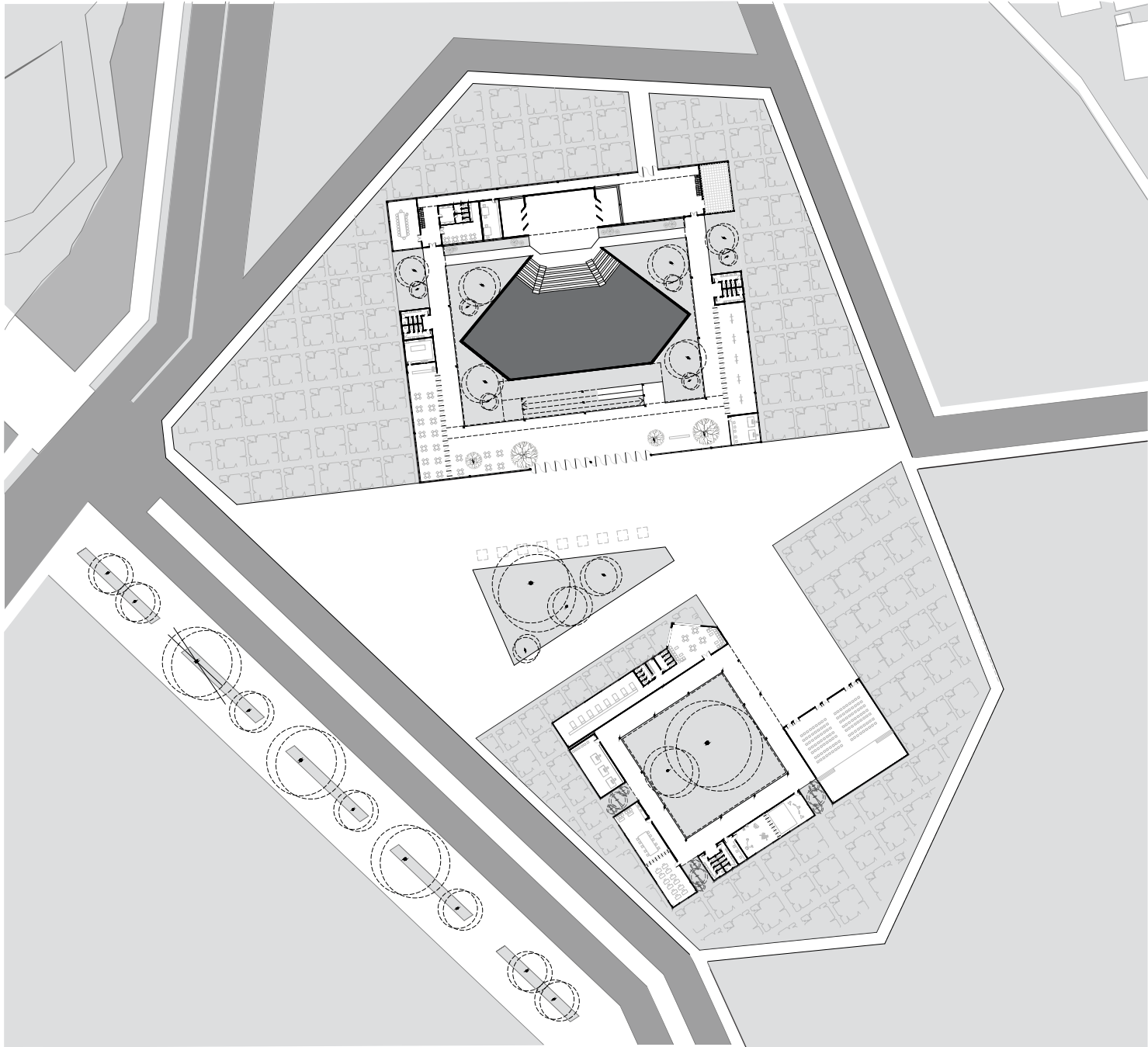
Planimetry



Assembly plant

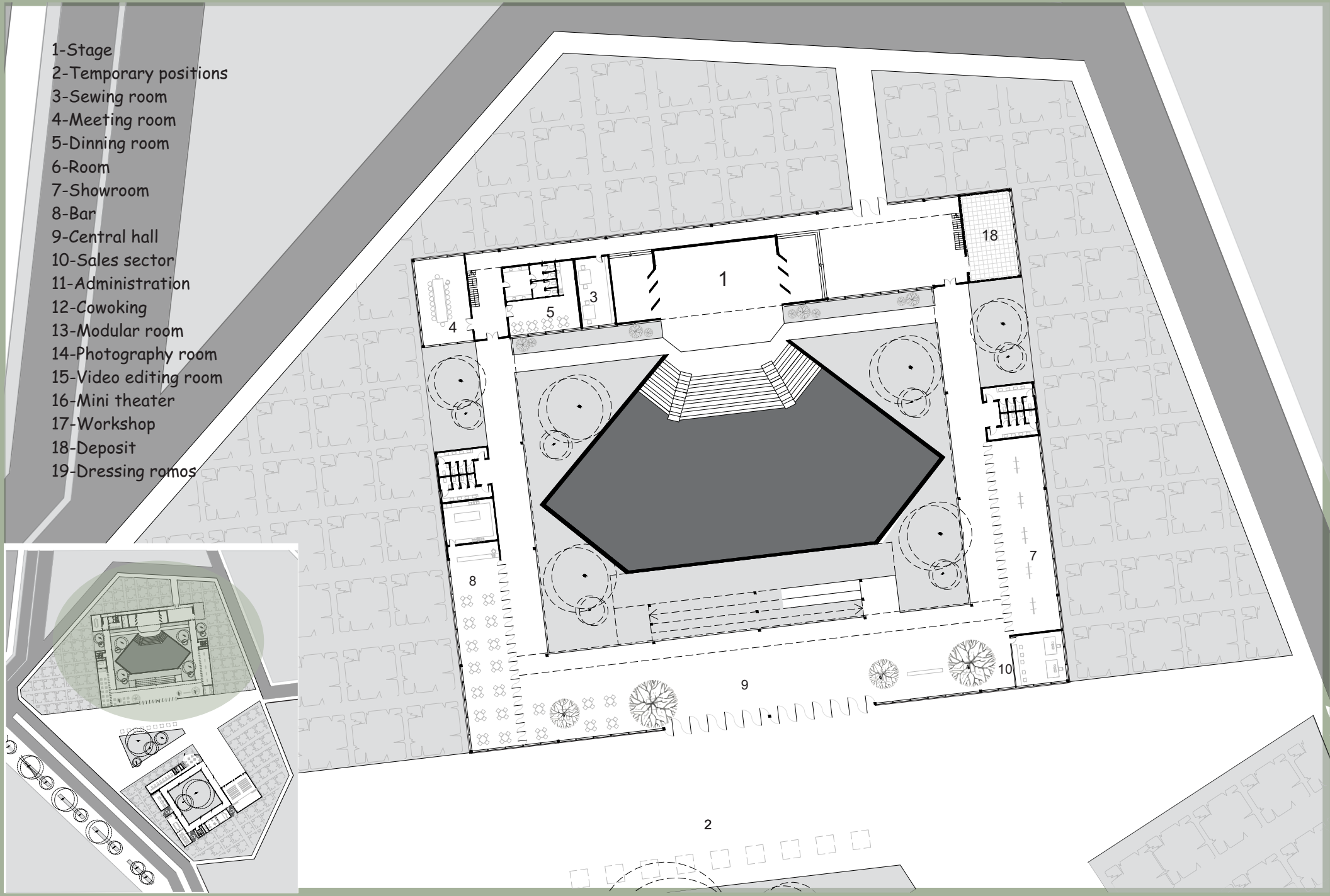


Roof plant



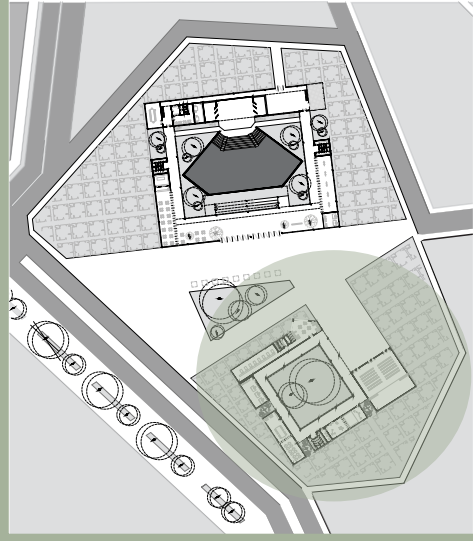
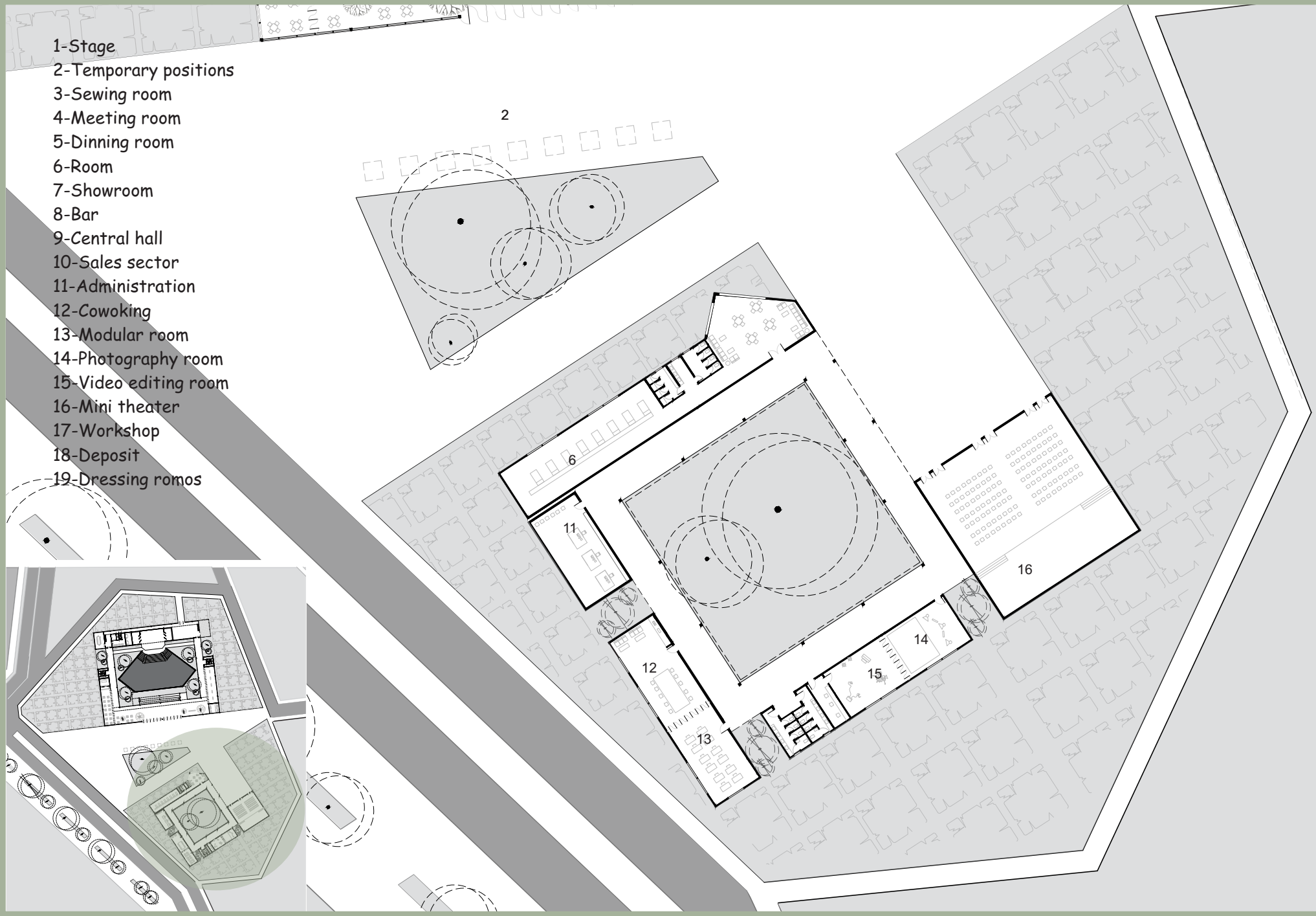
Low level

- 1-Stage
- 2-Temporary positions
- 3-Sewing room
- 4-Meeting room
- 5-Dinning room
- 6-Room
- 7-Showroom
- 8-Bar
- 9-Central hall
- 10-Sales sector
- 11-Administration
- 12-Cowoking
- 13-Modular room
- 14-Photography room
- 15-Video editing room
- 16-Mini theater
- 17-Workshop
- 18-Deposit
- 19-Dressing romos

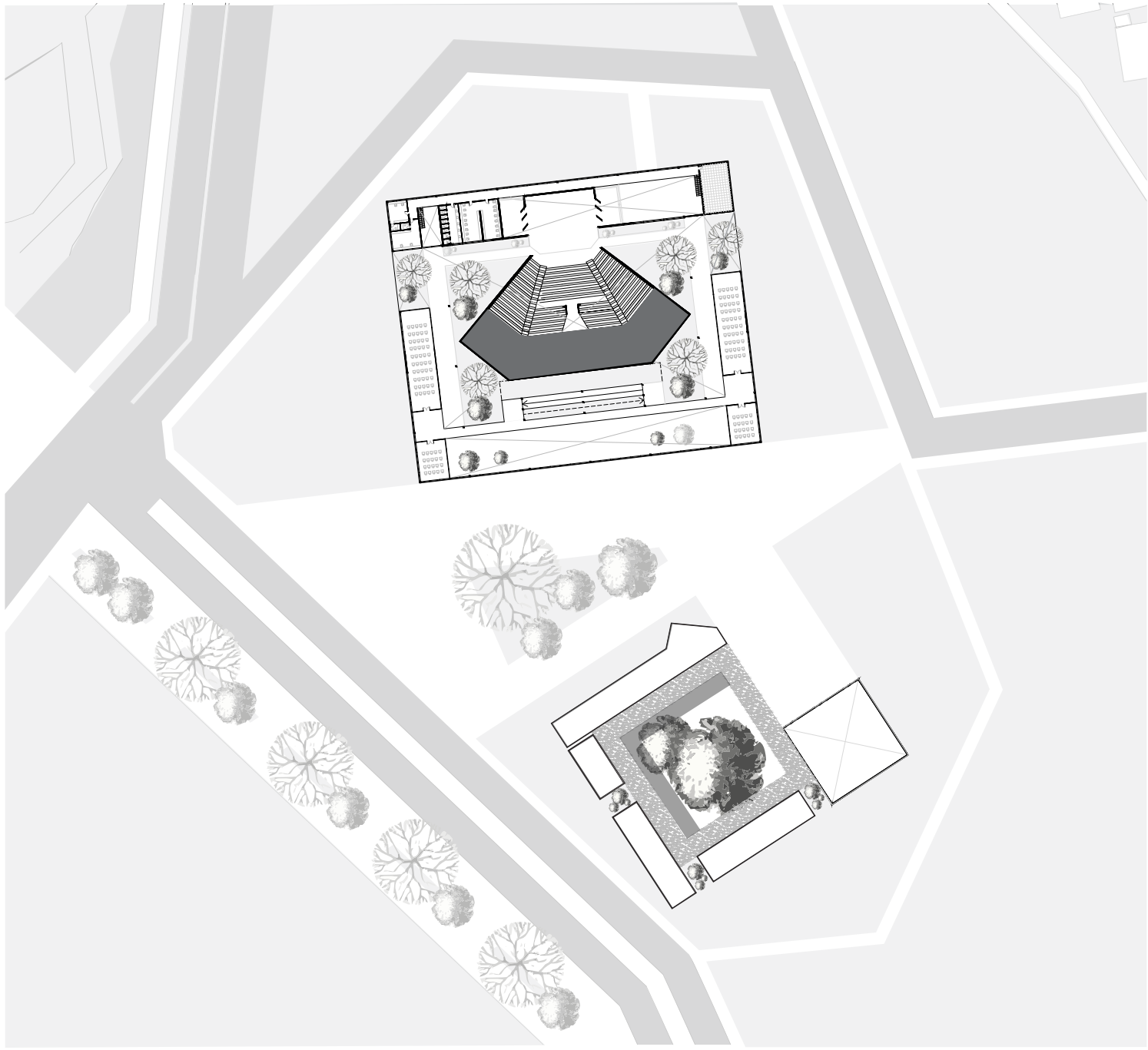


Ampliación

- 1-Stage
- 2-Temporary positions
- 3-Sewing room
- 4-Meeting room
- 5-Dinning room
- 6-Room
- 7-Showroom
- 8-Bar
- 9-Central hall
- 10-Sales sector
- 11-Administration
- 12-Cowoking
- 13-Modular room
- 14-Photography room
- 15-Video editing room
- 16-Mini theater
- 17-Workshop
- 18-Deposit
- 19-Dressing romos

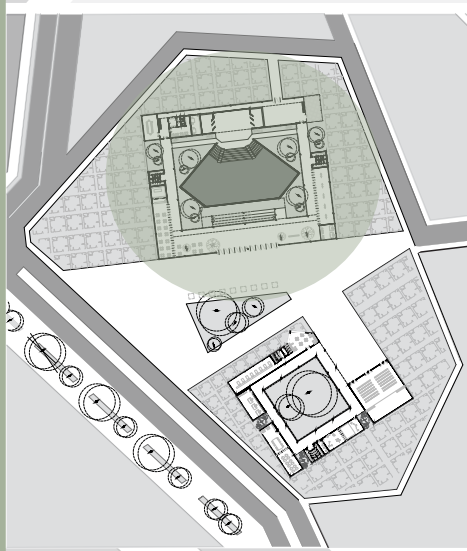
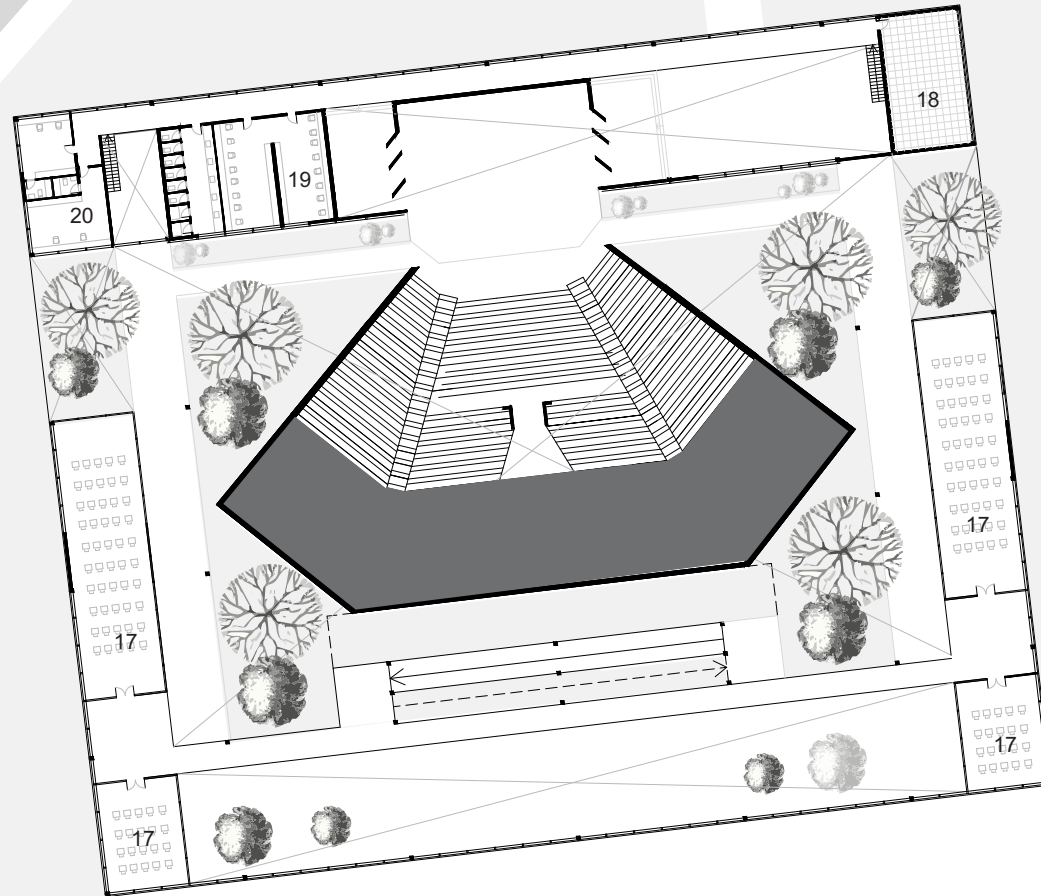


Ampliación

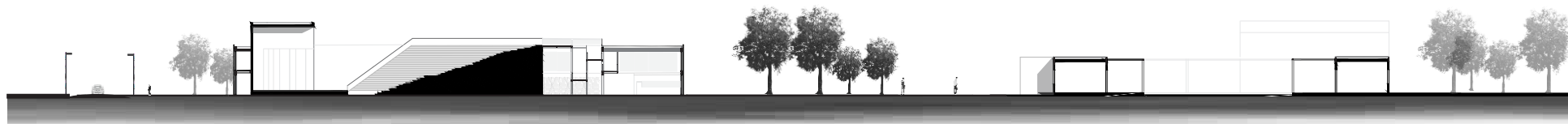


Top floor

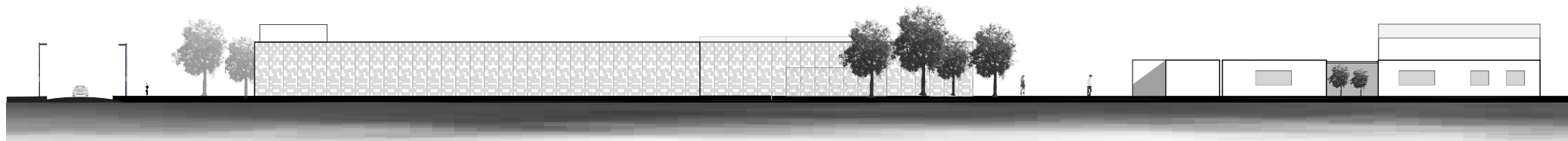
- 1-Stage
- 2-Temporary positions
- 3-Sewing room
- 4-Meeting room
- 5-Dinning room
- 6-Room
- 7-Showroom
- 8-Bar
- 9-Central hall
- 10-Sales sector
- 11-Administration
- 12-Cowoking
- 13-Modular room
- 14-Photography room
- 15-Video editing room
- 16-Mini theater
- 17-Workshop
- 18-Deposit
- 19-Dressing romos



Ampliación

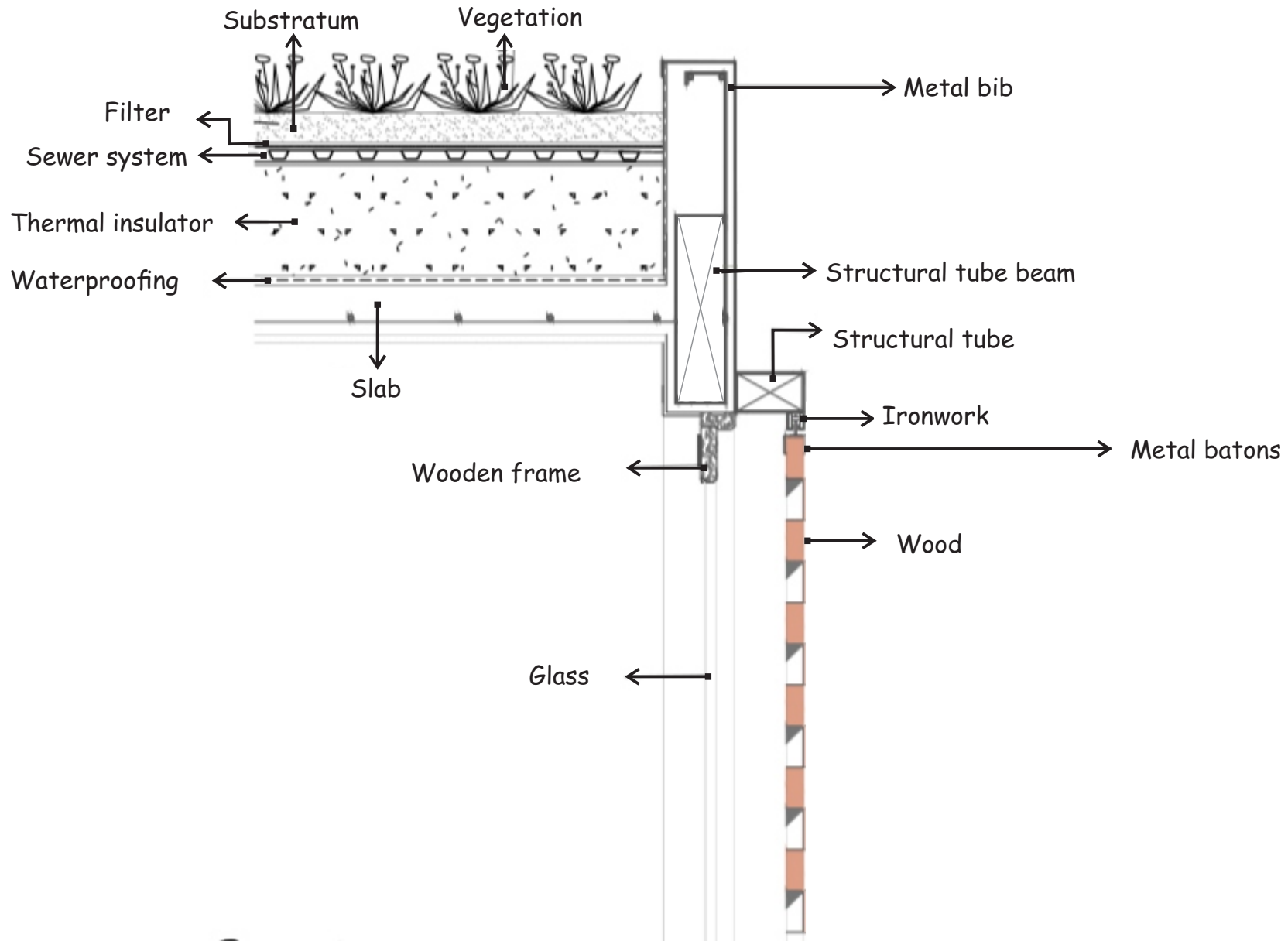


Cut A-A



East front

Cut and front



Constructive detail

Renders

