

# HAKUNA MATATA Theater Village

**Title:**

The project respects the spirit of African culture. THÉÂTRE POPULAIRE DESIRÉ BONOGO as the project is a place of versatility that allows people to stay in as an inhabitable shelter.

**Work:** The main theater is the heart of the project. It is designed in the center to ensure accessibility from other areas with different programs. The inner part of the theater is a stage which is considered as the work area. The stage strongly respects the existing structures. The stage used the same form of depth with walkable structure and poles for monitor, curtain, and projector. The theater geographically connects to each space of utility in a short distance with easy accessibility.

**Show:** Beyond the stage, the show area is a place of mixed programs. The auditorium connects to the stage naturally with seating. All the areas are covered as pavilions, and these spaces are oriented flexibly but strongly associated with the central stage. All the space of accessories such as showroom, café, and restaurant serves the center - the stage. That way creates a system of inner communication.

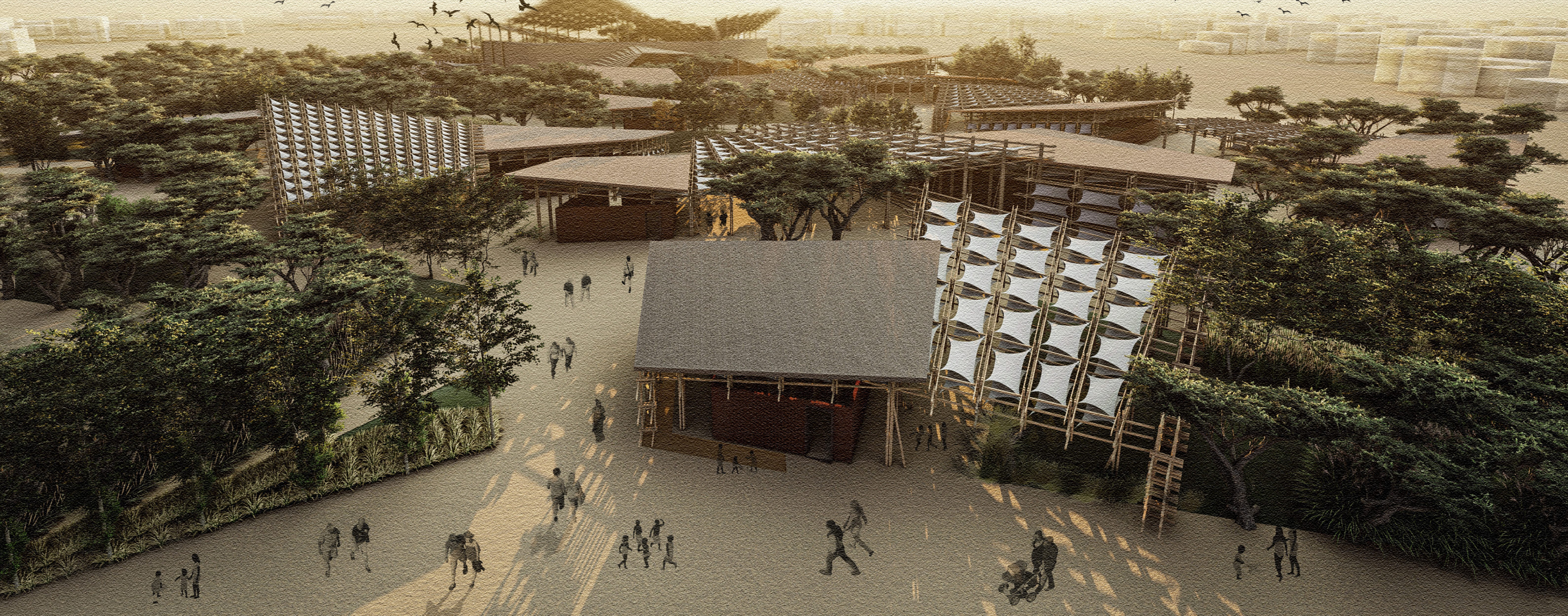
**Labo:** The Labo is a space of resources. The teaching space is independent compare to other spaces, yet not isolated. The view isn't blocked in the teaching area, but it is screened naturally by pathways. The pathway to the main area is convenient but it requires a little distance that gives privacy to the teaching area.

**Roof:** The material of the roof was chosen carefully. Thatch and cloth are two major materials used in this case. The combination allows natural ventilation through the roof. The shadow cast by the roof would be enough of enjoyment during summer. The material is an ode to traditional African architecture, and it is respectful to local resources.

**Culture:** The project respects and demonstrates the culture of Africa. The cohesive atmosphere is one of the main concepts of the project. The space is an opportunity for people gathering and staying together as an architectural landmark.

**Gender:** There is a specific design for gender equity. In public space, the female restroom normally suffered from overwhelming capacity. In the theater, the female restroom is specifically designed to fit more people using it at the same time to reduce people's flow with the unwanted overwhelming crowd for women.

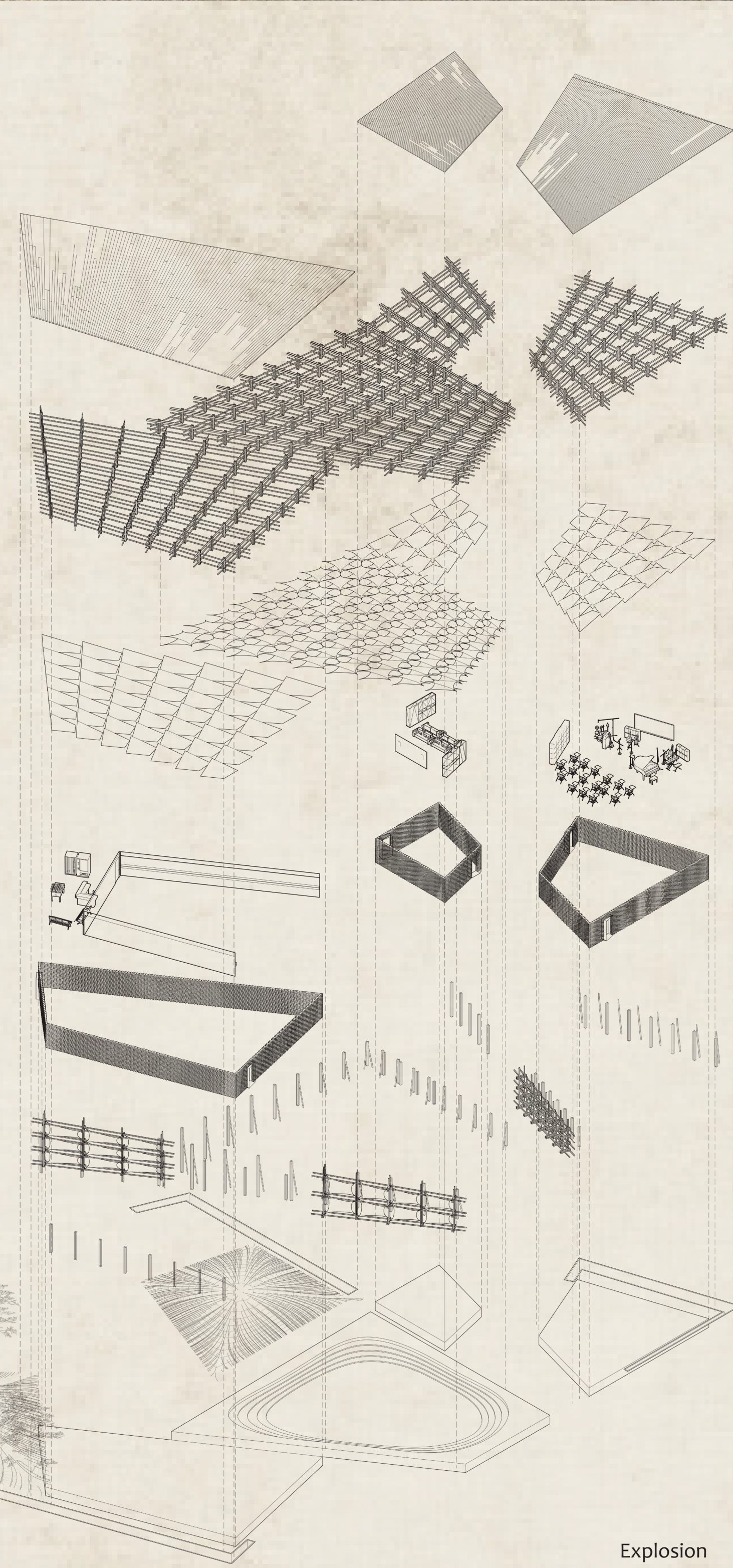
**Community benefits:** As the refurbished center of the community, the project positively affects surrounding objects. Within the complex urban context, the theater brings new energy to the community. Unlike conventional landmarks like sculptures, it is a usable landmark of people. An unfixed and semi-opening design allows people to pass through, which are desire paths for people.



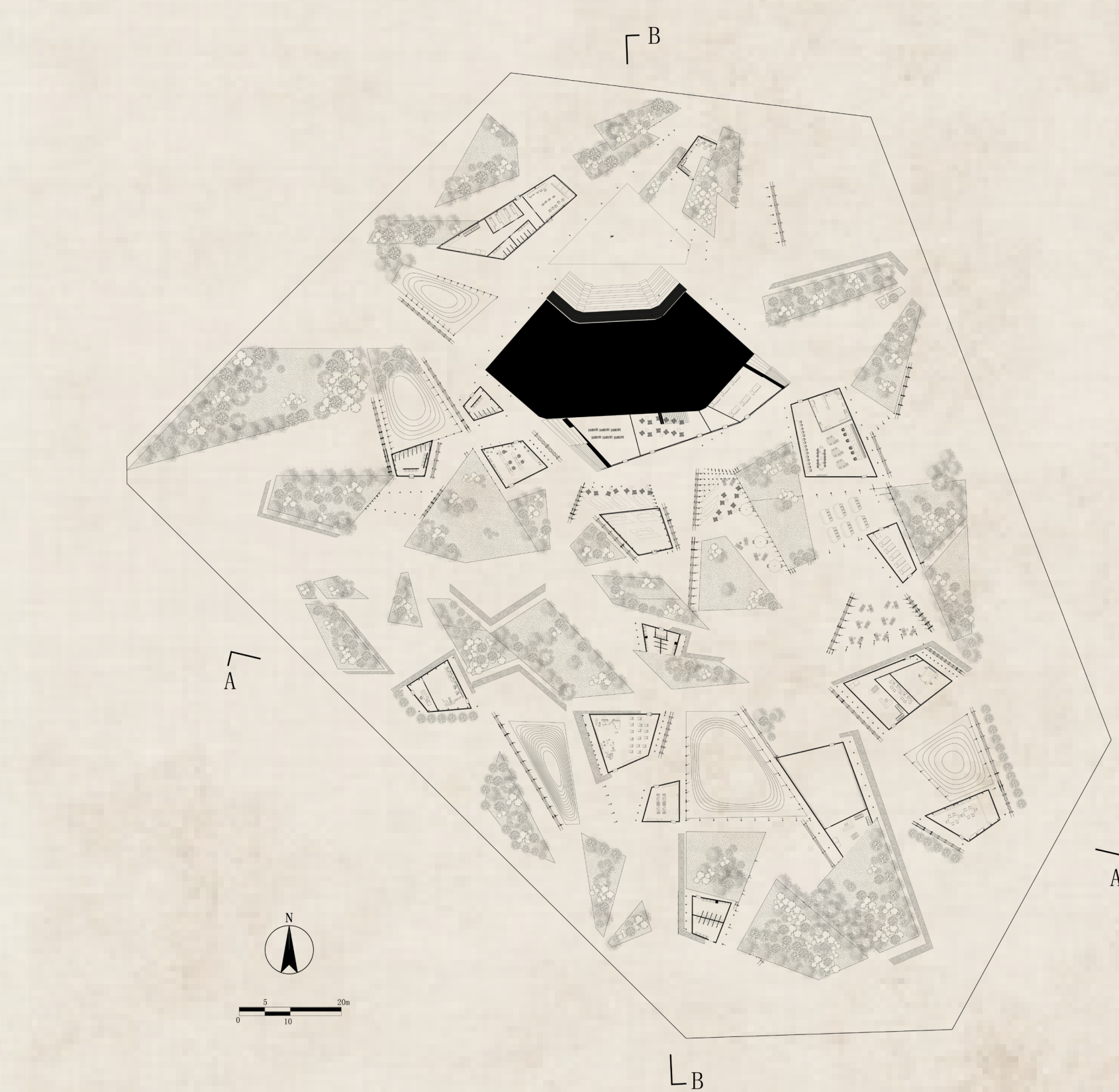
Site Plan



Axonometric



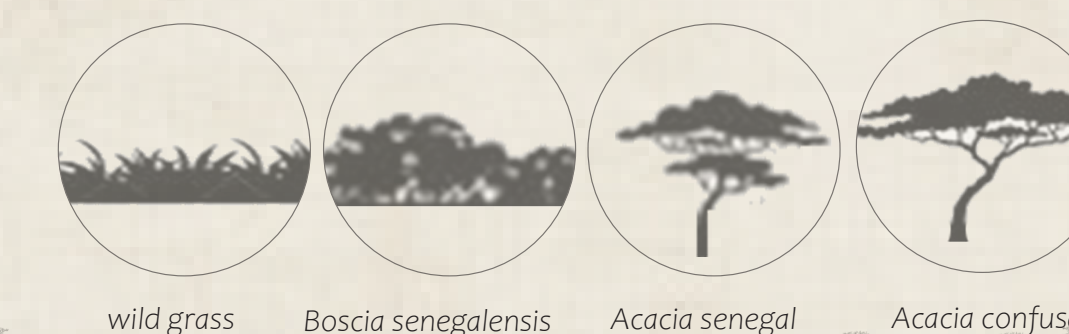
Explosion



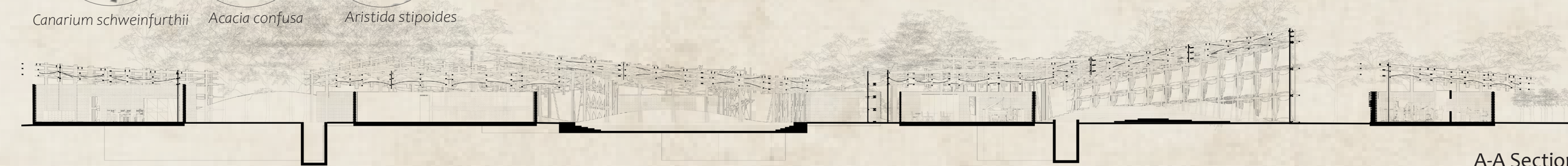
Floor Plan



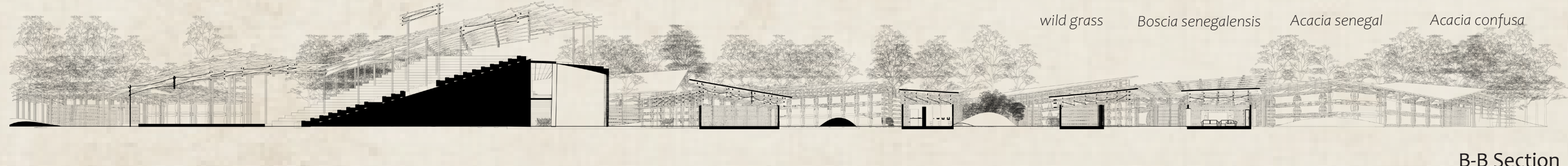
Axonometric Section



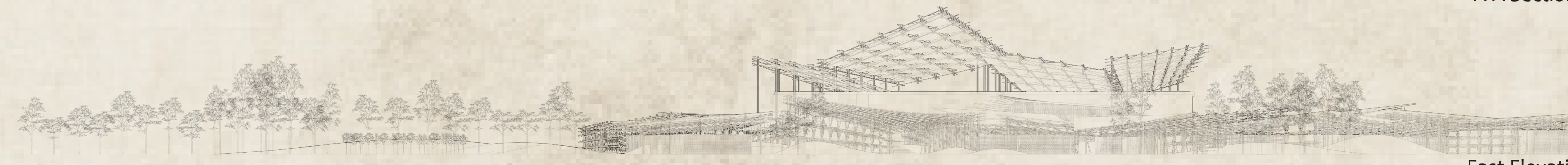
wild grass Boscia senegalensis Acacia senegal Acacia confusa



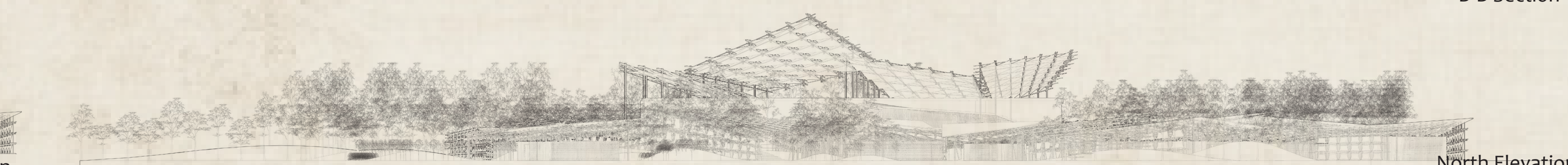
A-A Section



B-B Section



East Elevation



North Elevation

