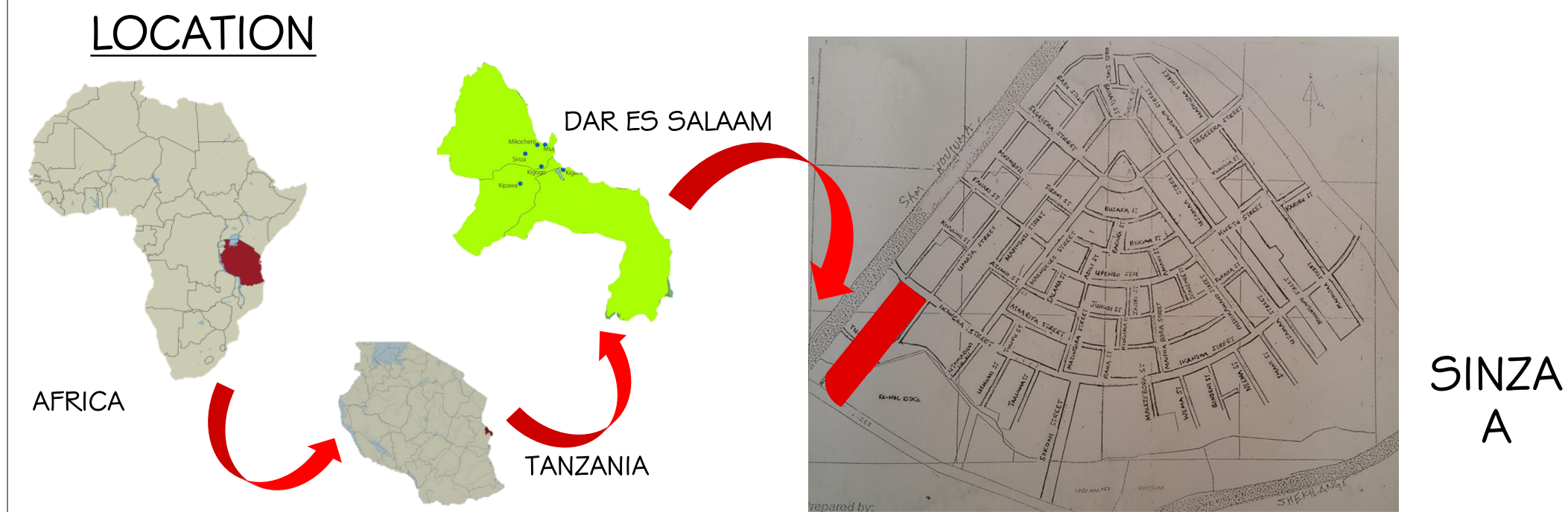


VERTICAL NEIGHBORHOOD PROJECT

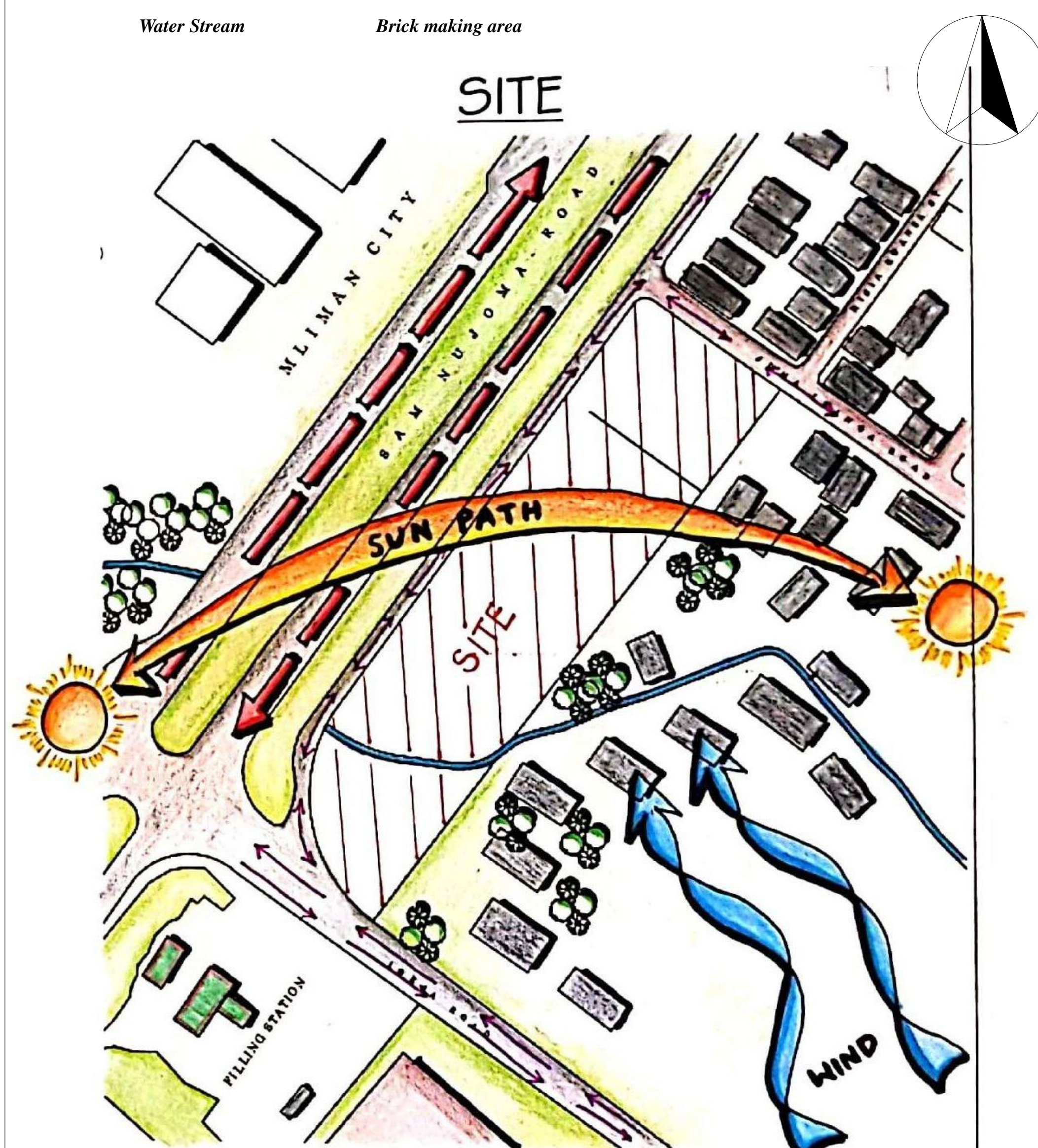
EXISTING SITE SITUATION



ACCESS ROADS



EXISTING FEATURES



CASE STUDY



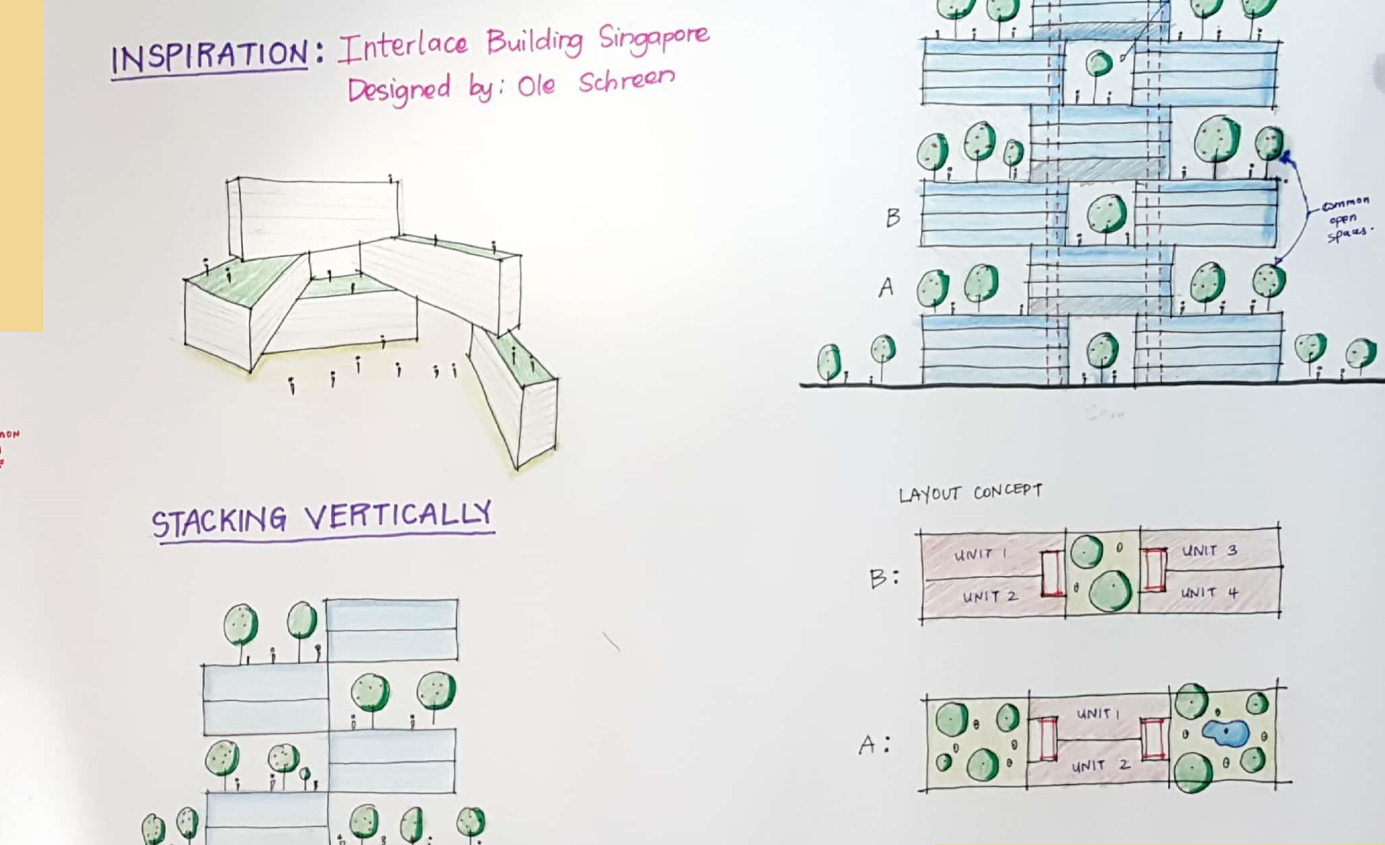
THE INTERLACE BUILDING

Designed by Ole Schreud, the interlace offers a design solution that is sustainable for a vertical neighborhood and ensures that there is maximum interaction amongst the neighbors

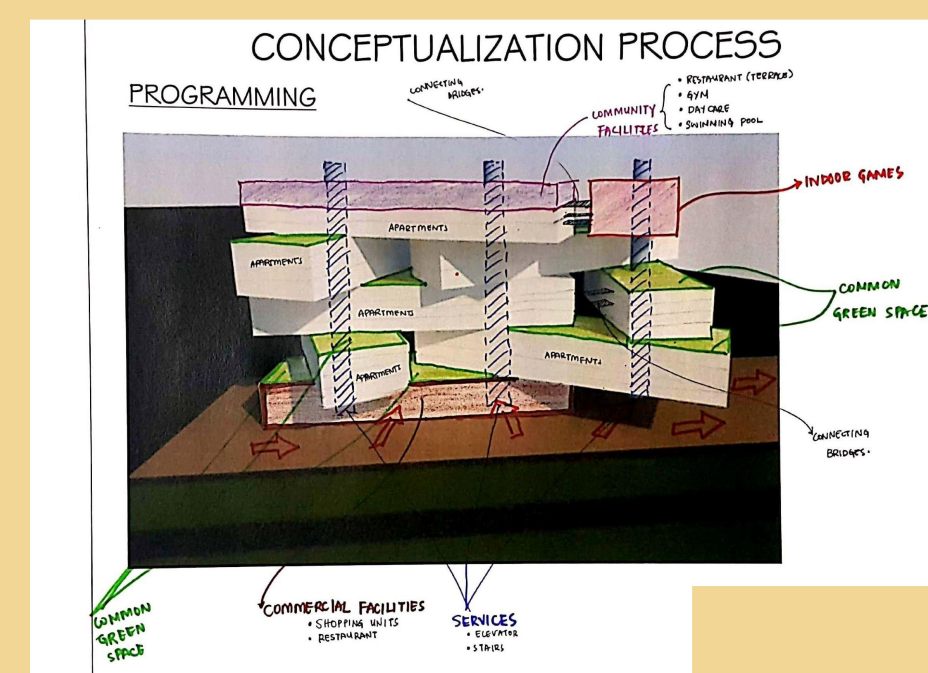
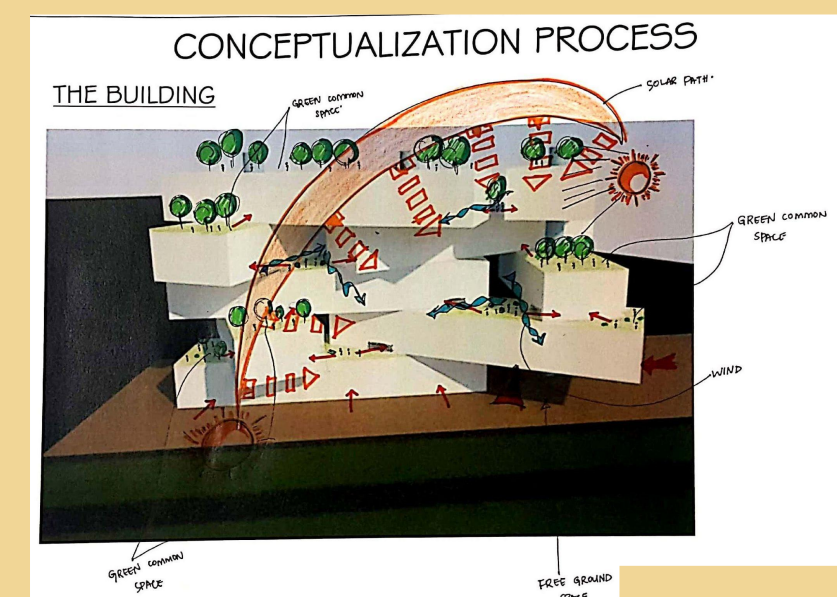
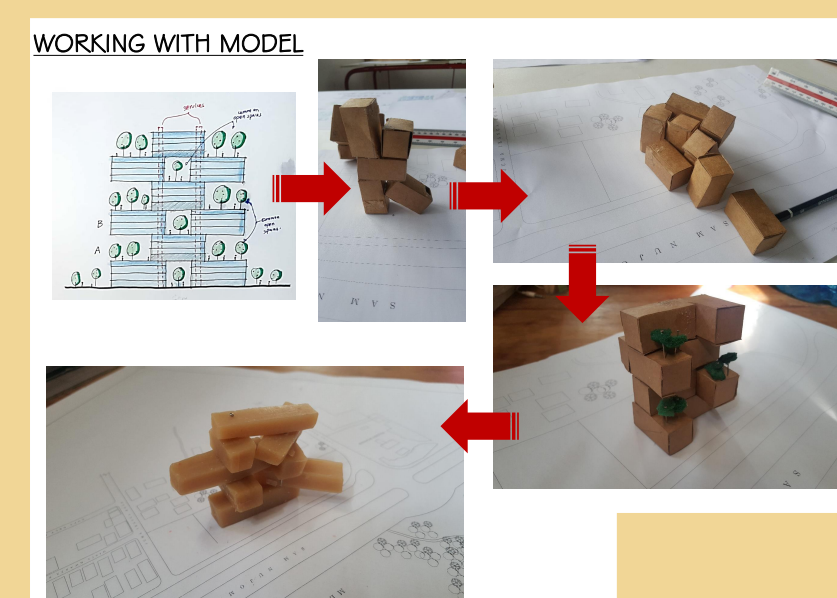
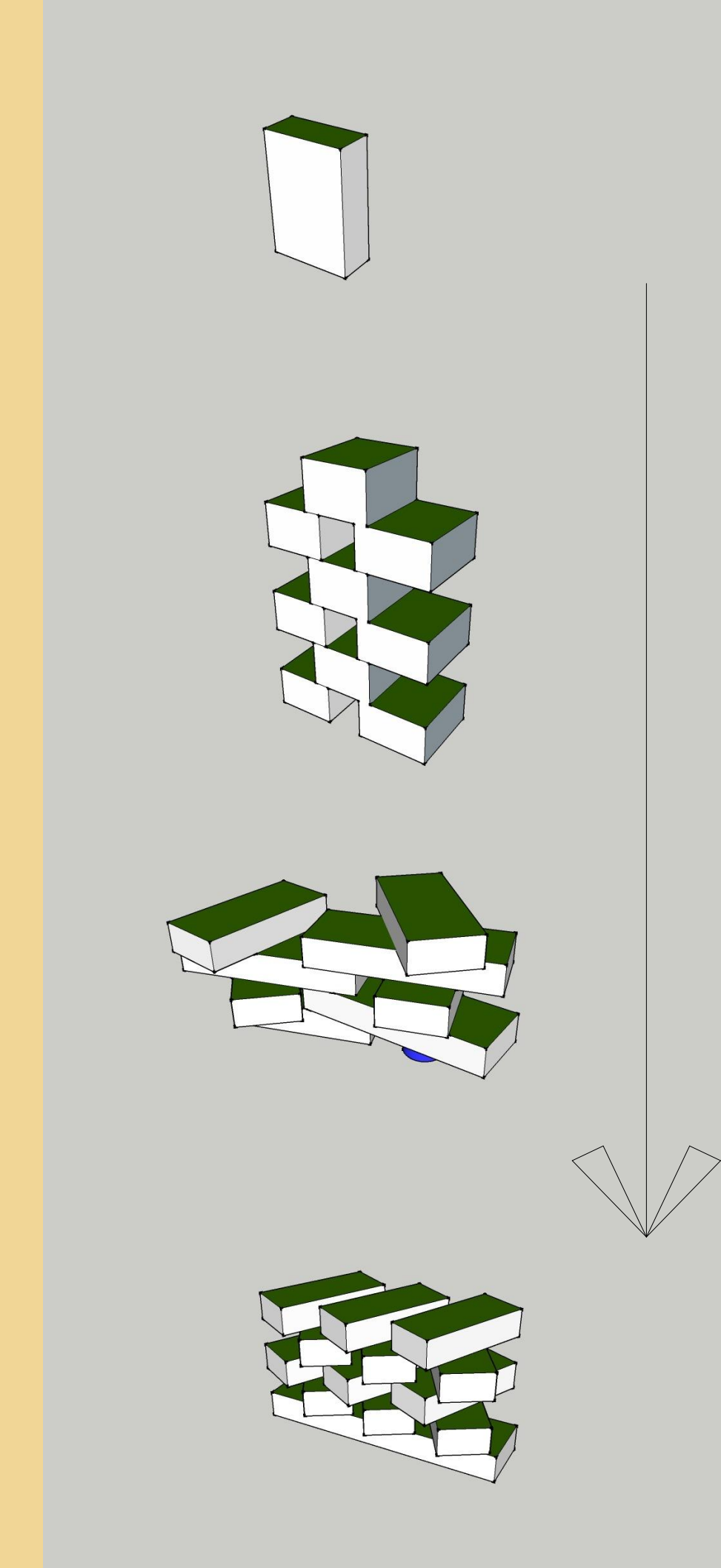
THEME:
Communal Living In The City

CONCEPT:
Clusters + Open Space

CONCEPTUAL PROCESS



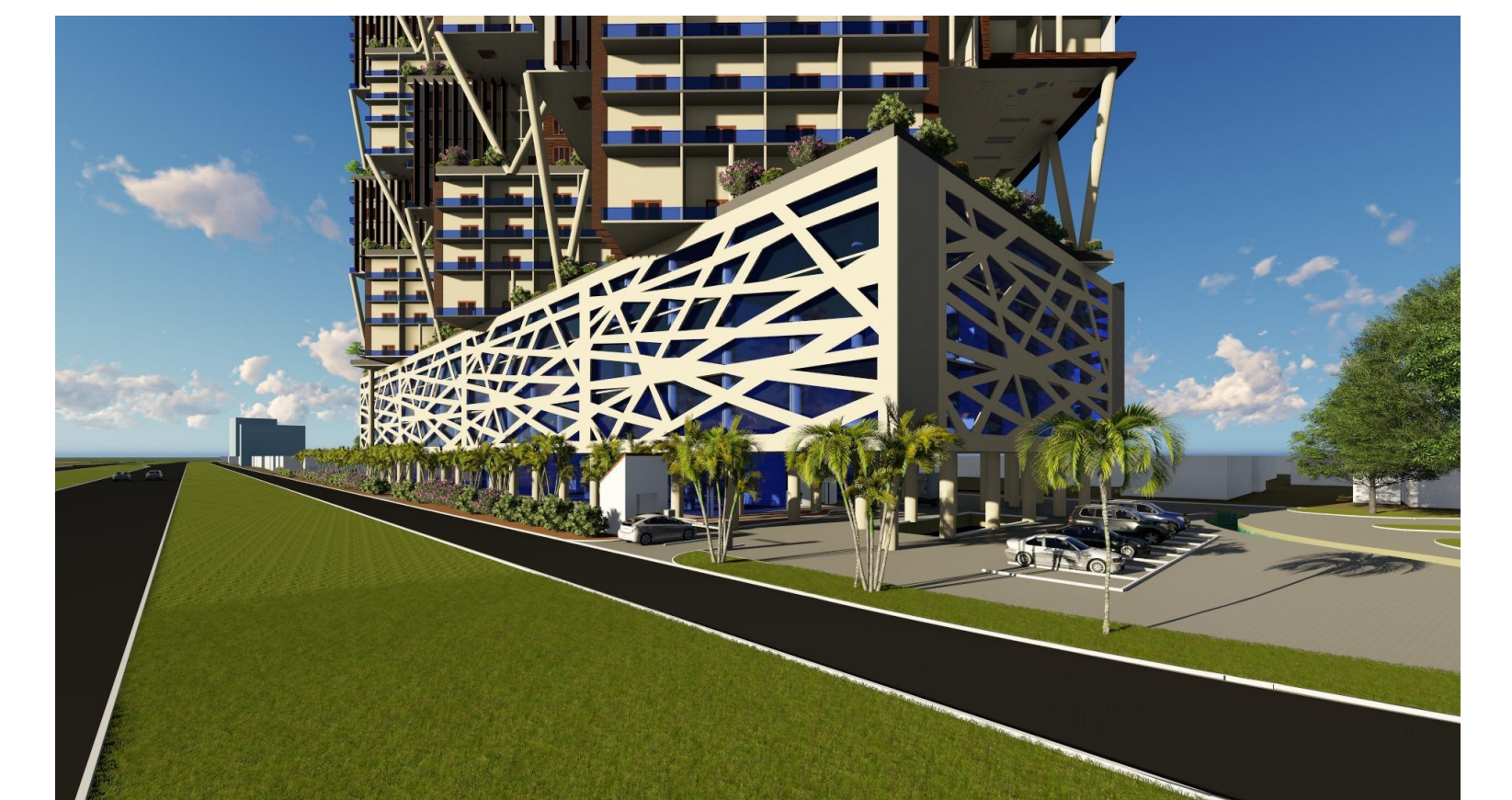
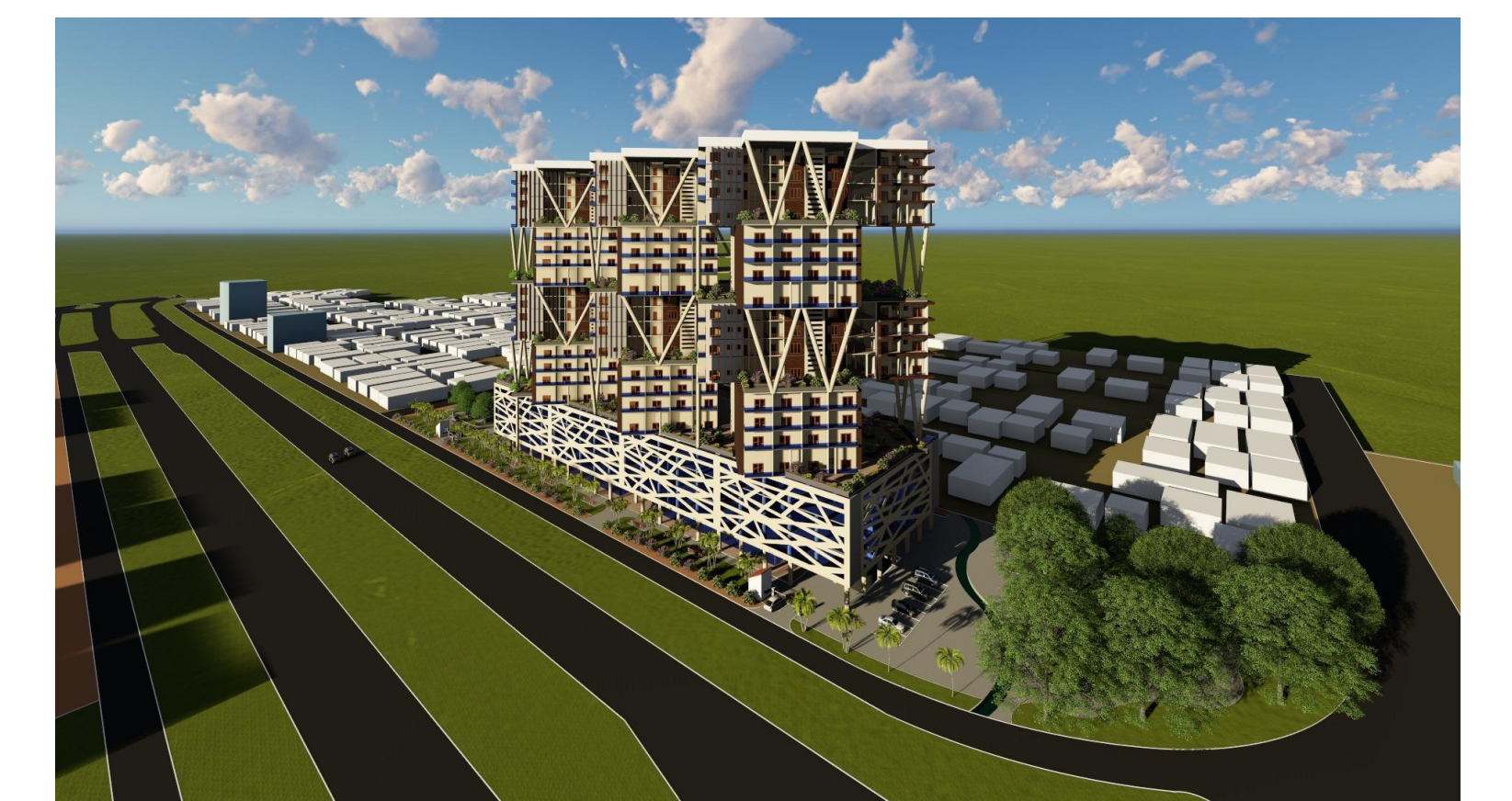
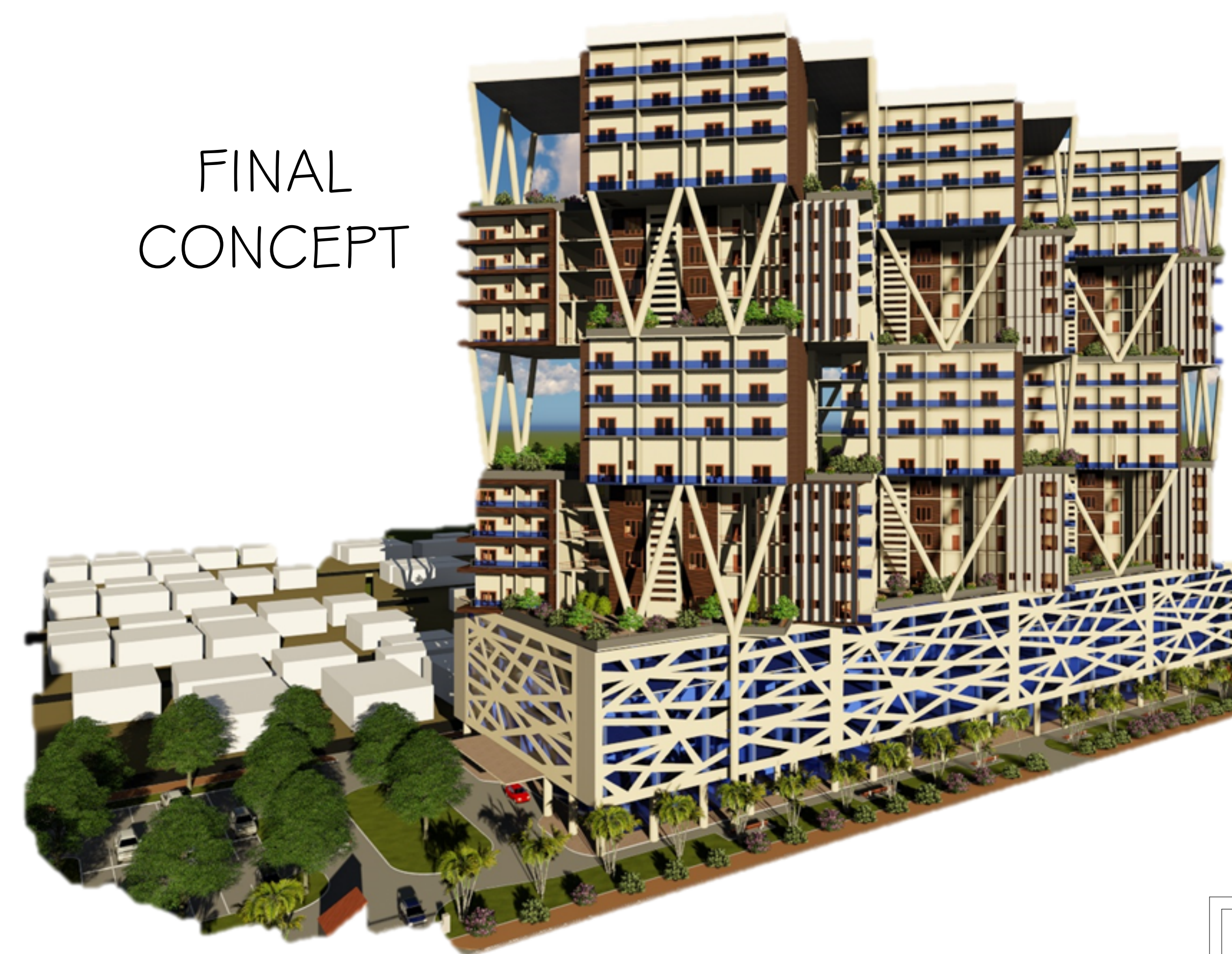
CONCEPTUALIZATION PROCESS



PROPOSED SITE LAYOUT



FINAL CONCEPT



UNIQUENESS OF THE DESIGN

The design provides solutions to interaction between people through provision of several greenery spots used as common spaces where people will interact



UNIVERSITY OF DAR ES SALAAM
COLLEGE OF ENGINEERING AND TECHNOLOGY
DEPARTMENT OF STRUCTURE AND CONSTRUCTION ENGINEERING

STUDIO DESIGN PROJECT VIII

PROJECT: VERTICAL NEIGHBORHOOD PROJECT

DESIGNED BY: ARCH. MWAMBEGELE, TUTINDAGA J

REG NO: 2015-04-06465

YEAR 4, SEMESTER II

DATE: JULY, 2019