

multipage PDF

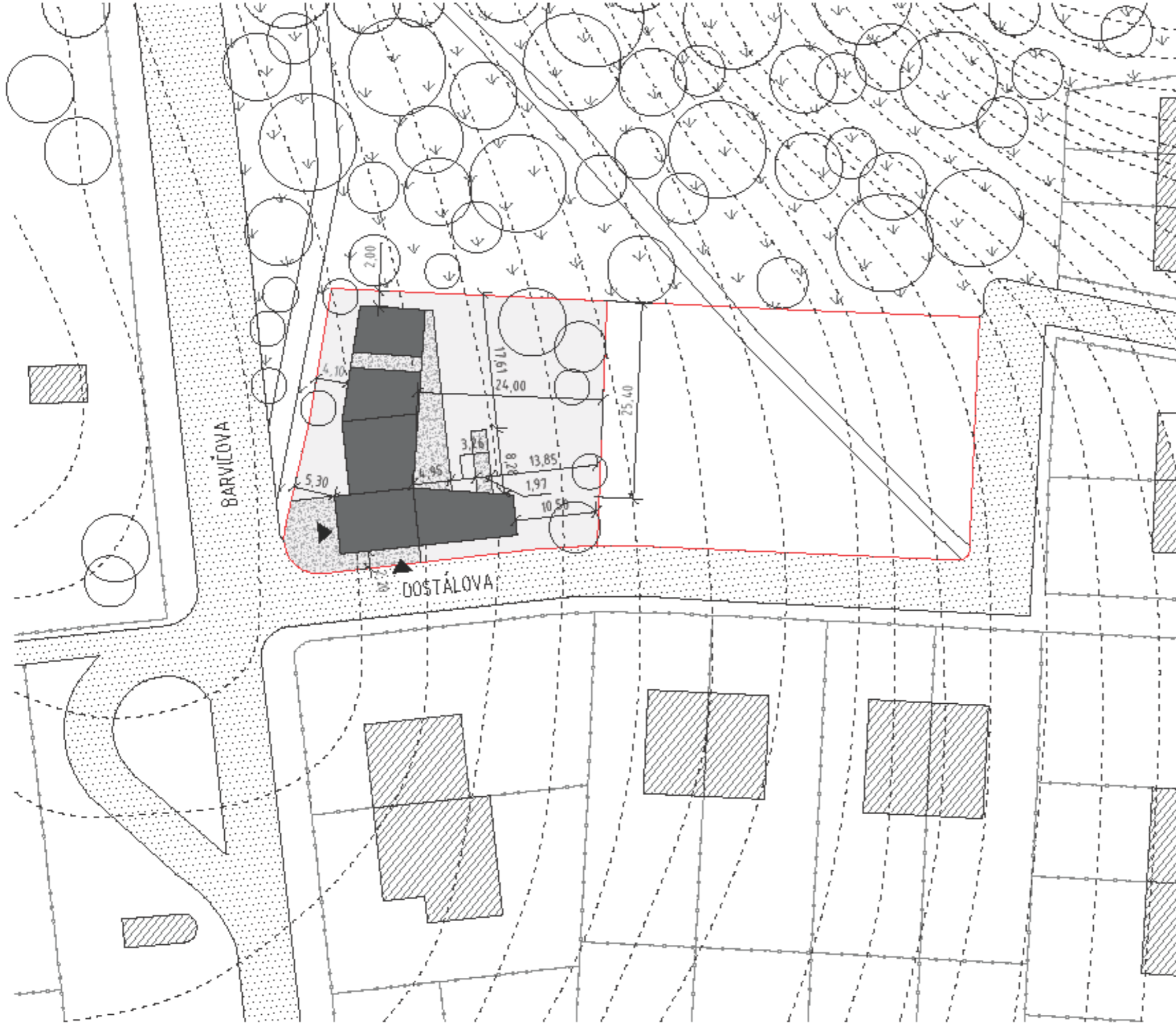
# VILLA IN BRNO

Brno – Masarykova district

Made by : Ladislav Tamaši

WIDER SITUATION \_ 01  
SITUATION \_ 02  
CONCEPT \_ 03  
FLOOR PLANS \_ 09  
SECTIONS \_ 12  
ELEVATIONS \_ 14  
CONSTRUCTION ANALYSIS \_ 16  
FOTOS OF MODEL \_ 18



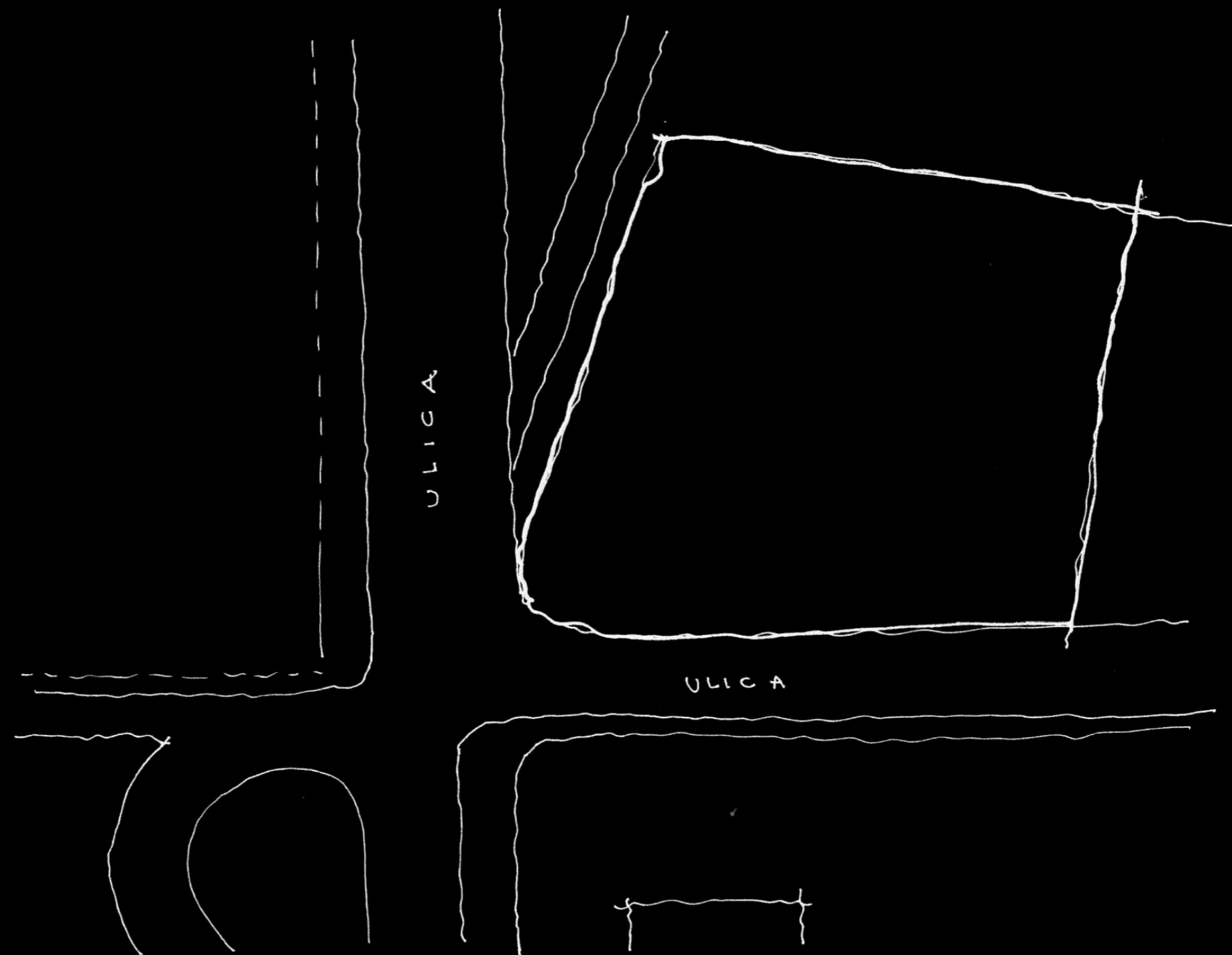


-  ROADS
-  EXISTING OBJECTS
-  GRASS
-  THE VILLA
-  PLOT
-  CONCRETE AREAS
-  TREES
-  LAND BORDERS
-  TERRAIN
-  ENTRANCES

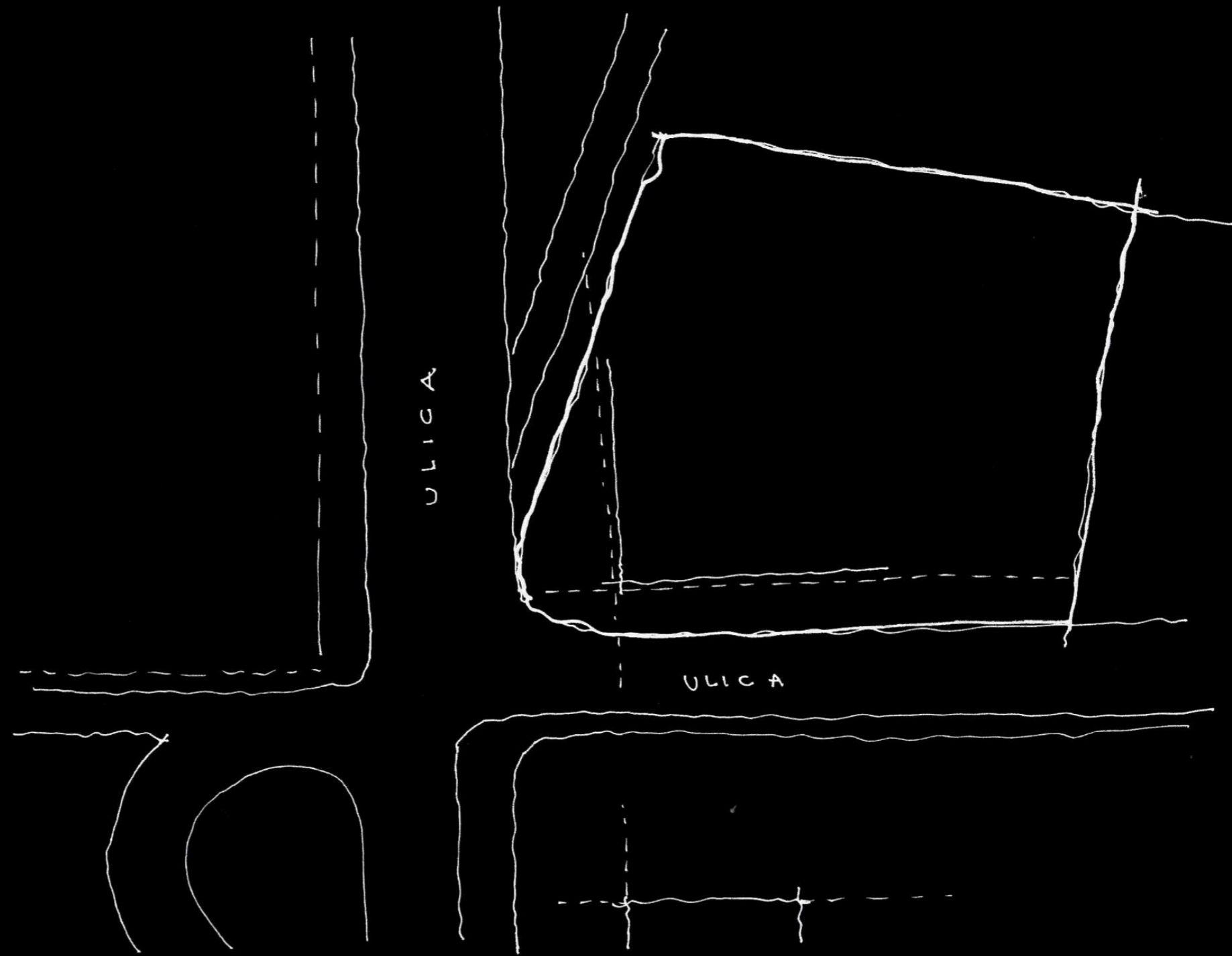


# SITUATION

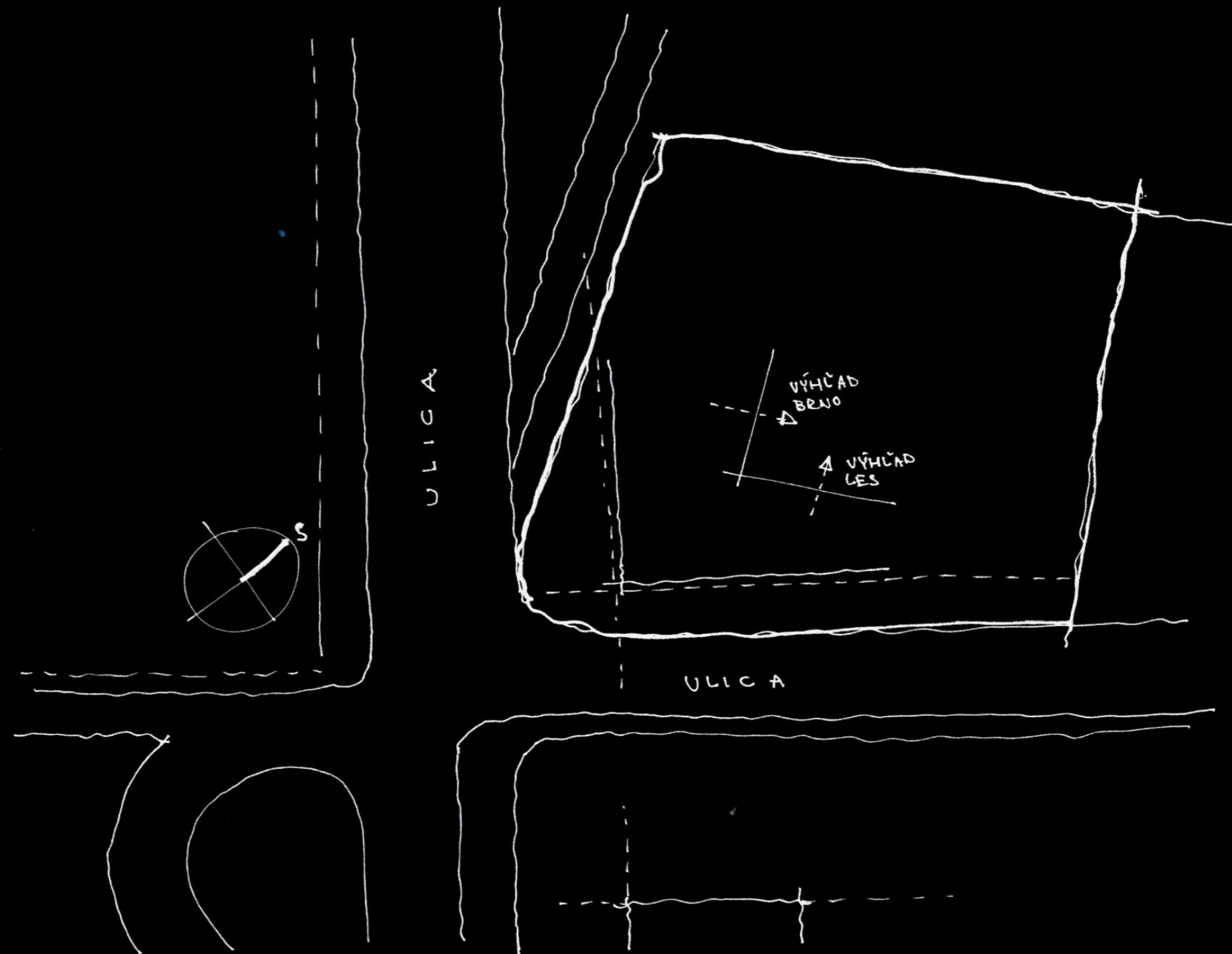
THE CONSTRUCTION SITE IS AT THE INTERSECTION OF TWO STREETS, ON THE RIDGE OF THE UNDULATING TERRAIN, SO THE CONSTRUCTION SHOULD BE A KIND OF ENDING, THE ONLY OBJECT CONNECTING TWO STREETS IN A PILE, A CORNER HOUSE.



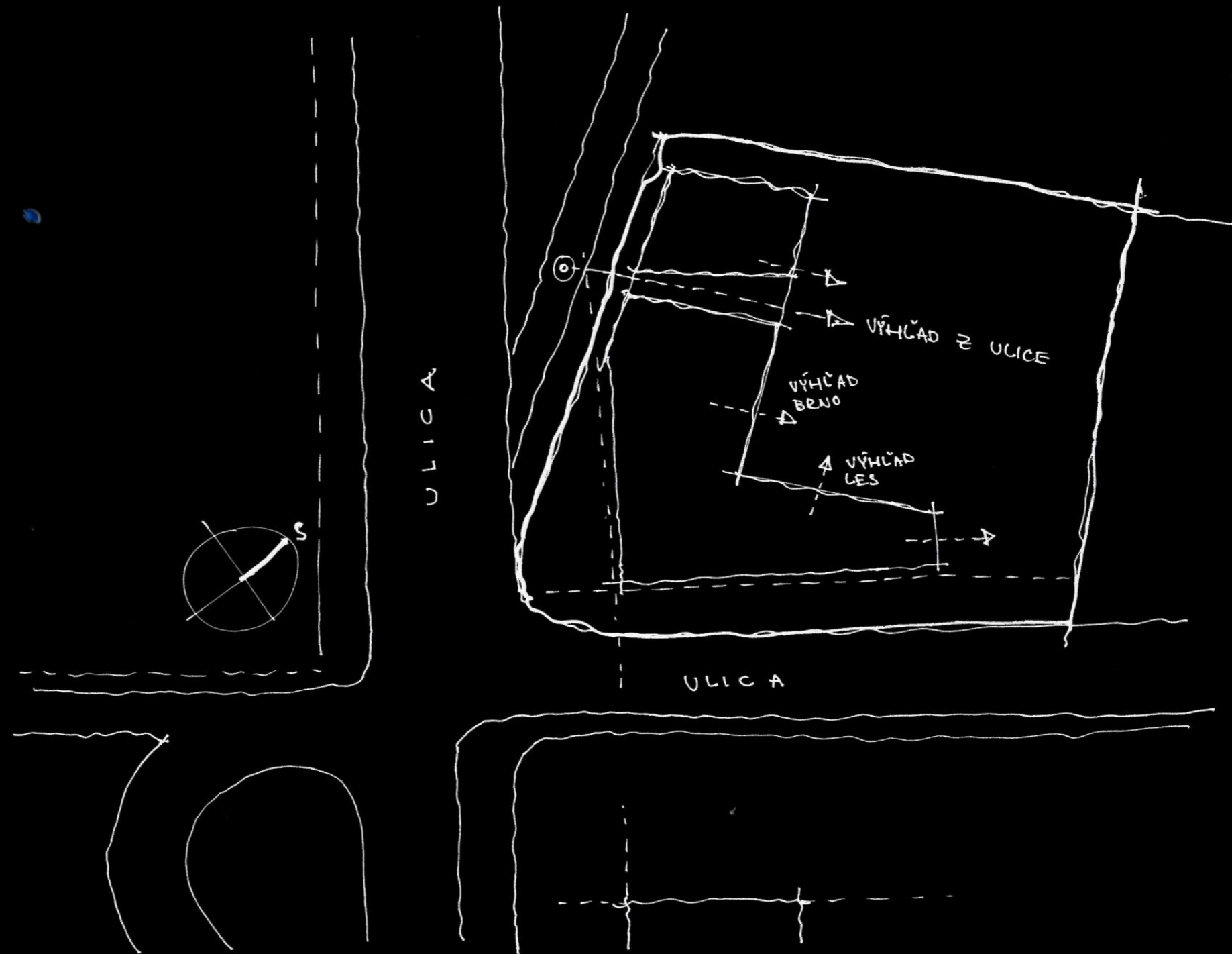
THE PARALLELS WITH THE STREET FORMING THE CORNER OF THE HOUSE, AND RESPECT THE RASTER OF THE SURROUNDING BUILDINGS. THEY ARE LOCATED AS FAR AS POSSIBLE TO THE SOUTHERN CORNER OF THE PLOT SO THAT THE HOUSE CREATES AN ISOLATED GARDEN INSIDE WITH A LOT OF PRIVACY.



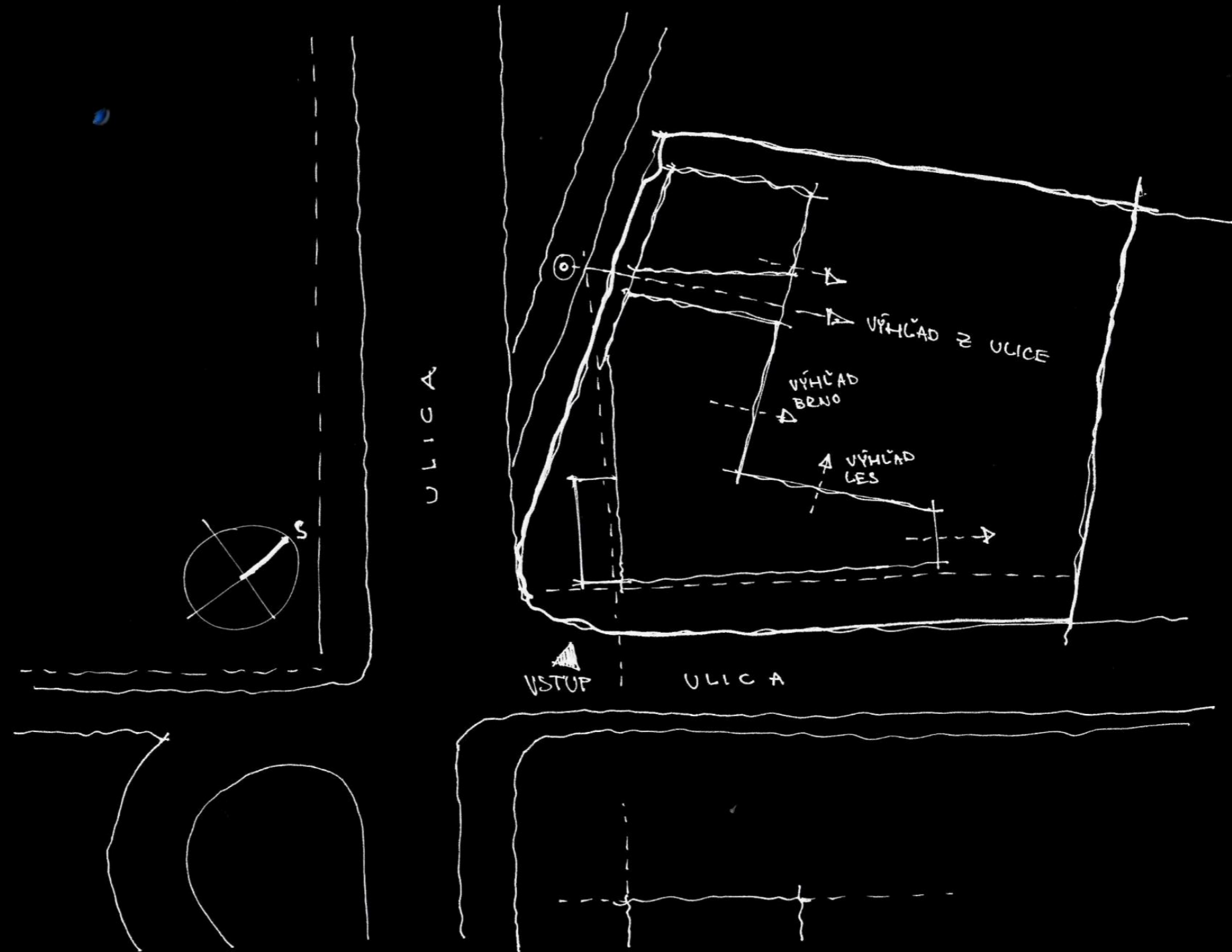
WHEN DESIGNING, I SOLVED THE UNFAVOURABLE SLOPE BY SLIGHTLY TURNING TWO PERPENDICULAR FACADES BY 10 ° TO GET MORE SUNRISE AND A BETTER VIEW OF BRNO THROUGH THE WINDOWS. THE FACADE OF THE WORKING PART OF THE HOUSE, ON THE OTHER HAND, HAS A VIEW OF THE FOREST.

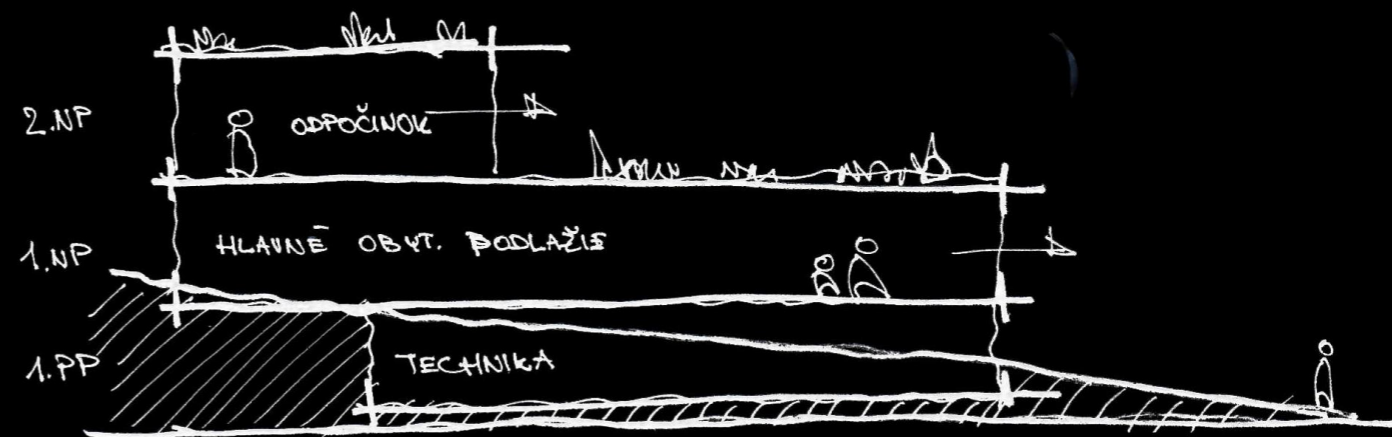
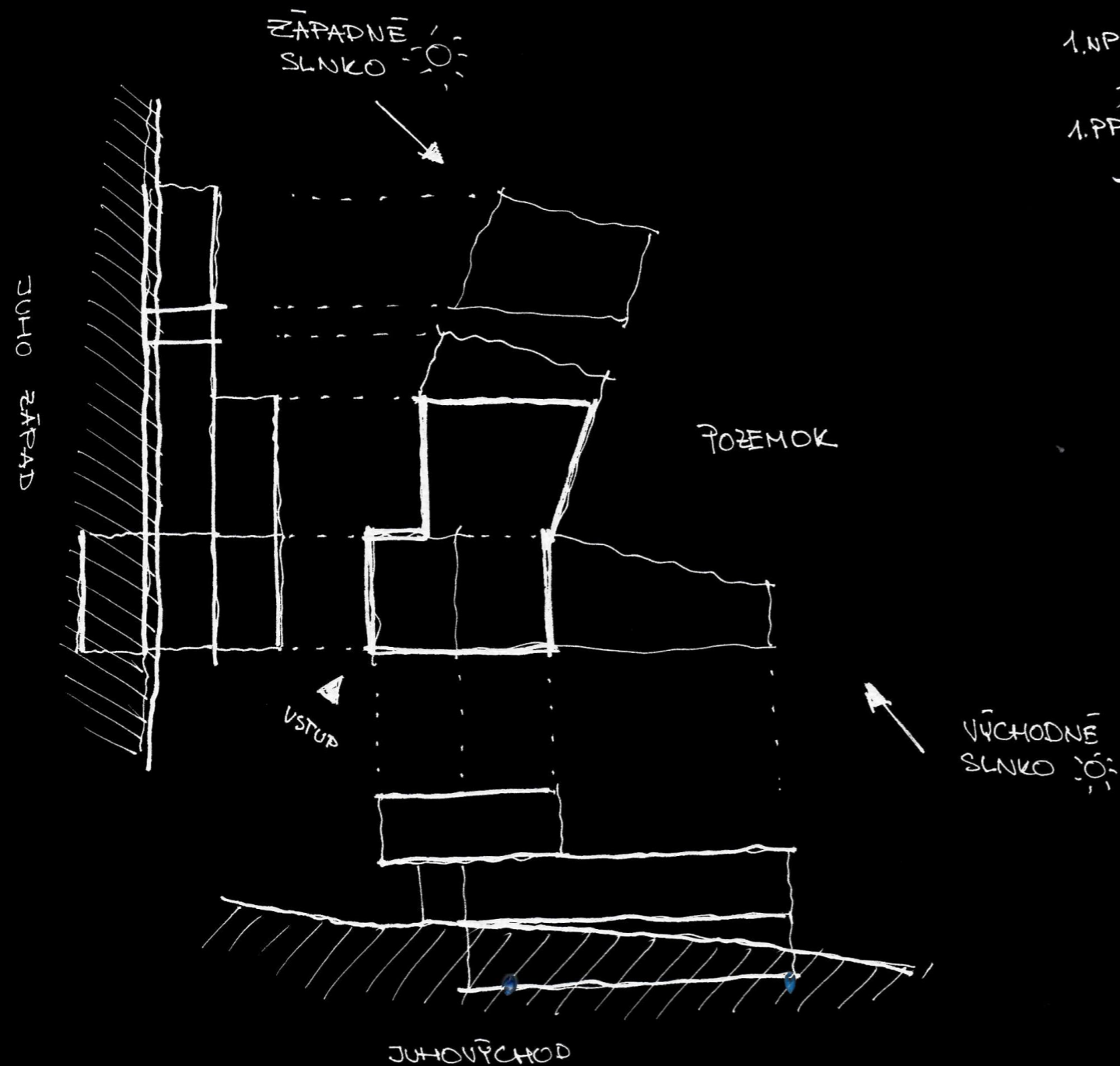


THE VIEW THROUGH THE BUILDING, ACHIEVED BY OMITTING PART OF THE VOLUME OF THE CONCEPT, OFFERS A BENEFICIAL VIEW OF THE LAND TO PASSERS-BY, HEADING TO THE FOREST PARK.



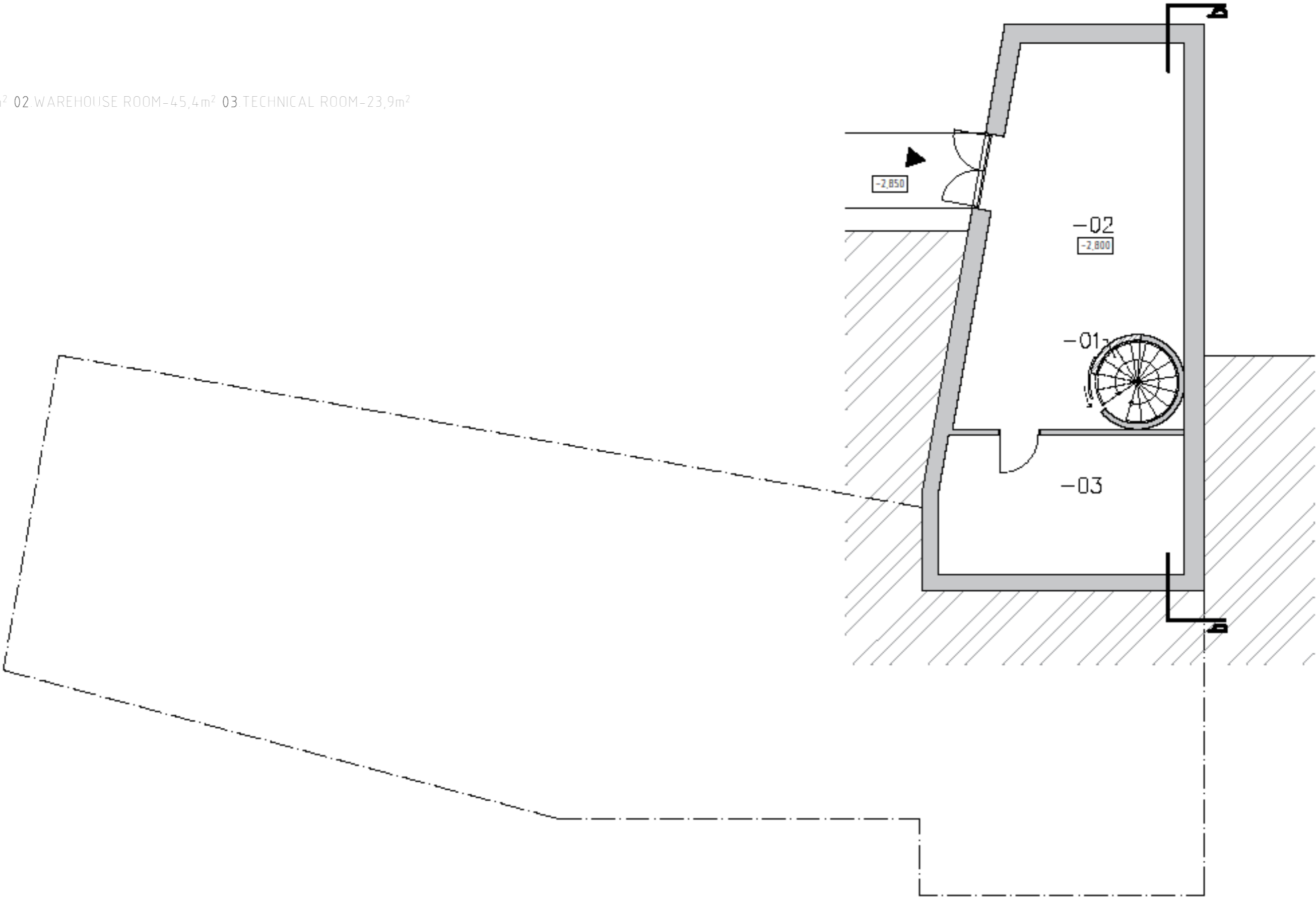
THE ENTRANCE TO THE BUILDING IS OFFERED ON THE CORNER AT THE INTERSECTION OF TWO STREETS, IT IS COVERED BY AN EXTENDED CONSOLE ON WHICH THE 2ND FLOOR OF THE FAMILY VILLA IS LOCATED. THIS CORNER PART OF THE HOUSE IS SLIGHTLY HIGHER THAN THE REST OF THE HOUSE, THUS FORMING THE FINAL "TOWER" AT THE INTERSECTION OF STREETS.





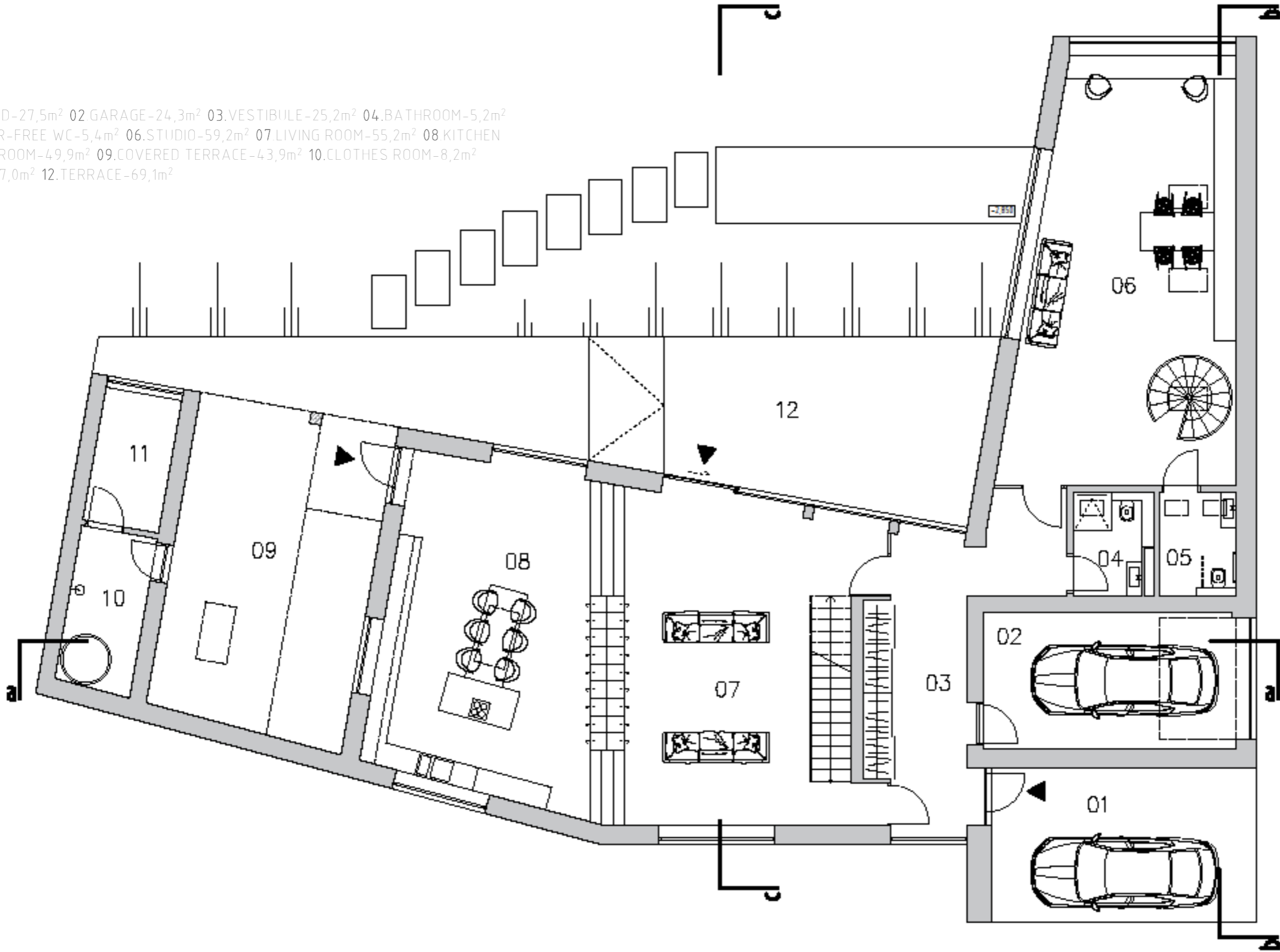
THE SOLUTION OF THE FLOOR OF THE BUILDING DEPENDS ON THE WORLD SIDES, RESP. FROM THE IMPACT OF THE SUN ON THE LAND. FOR THIS PURPOSE, THE PART FROM THE EAST AND THE WEST IS LOWERED AND HAS ONLY ONE ABOVE-GROUND FLOOR. THE FLOORS ARE ALSO DIVIDED ACCORDING TO FUNCTIONS AND USE DURING THE DAY.

01.STAIRS-7,2m<sup>2</sup> 02.WAREHOUSE ROOM-45,4m<sup>2</sup> 03.TECHNICAL ROOM-23,9m<sup>2</sup>



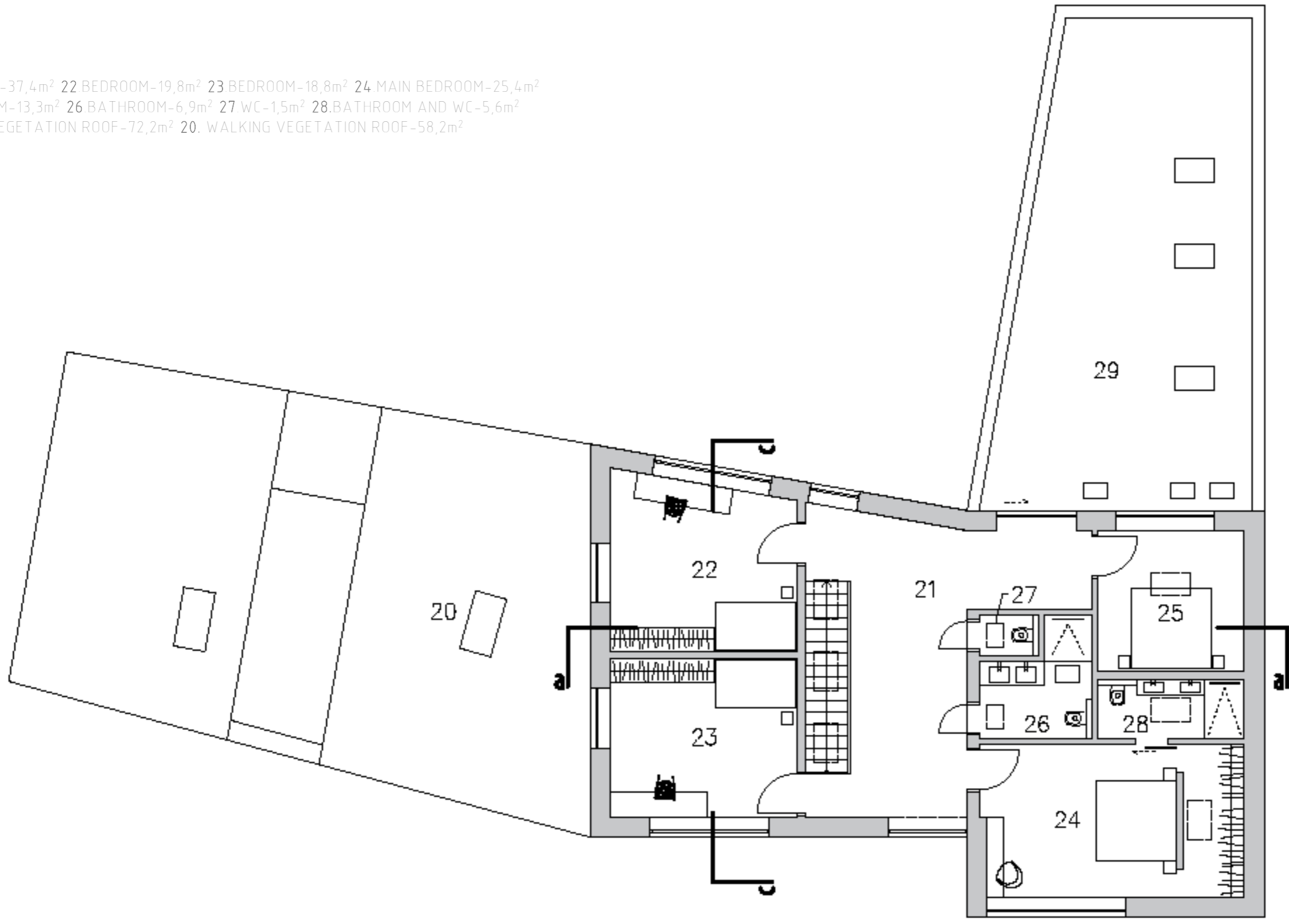
# FLOOR PLAN OF BASEMENT

- 01.LEEWARD-27,5m<sup>2</sup> 02.GARAGE-24,3m<sup>2</sup> 03.VESTIBULE-25,2m<sup>2</sup> 04.BATHROOM-5,2m<sup>2</sup>
- 05.BARRIER-FREE WC-5,4m<sup>2</sup> 06.STUDIO-59,2m<sup>2</sup> 07.LIVING ROOM-55,2m<sup>2</sup> 08.KITCHEN
- + DINNING ROOM-49,9m<sup>2</sup> 09.COVERED TERRACE-43,9m<sup>2</sup> 10.CLOTHES ROOM-8,2m<sup>2</sup>
- 11.SAUNA-7,0m<sup>2</sup> 12.TERRACE-69,1m<sup>2</sup>



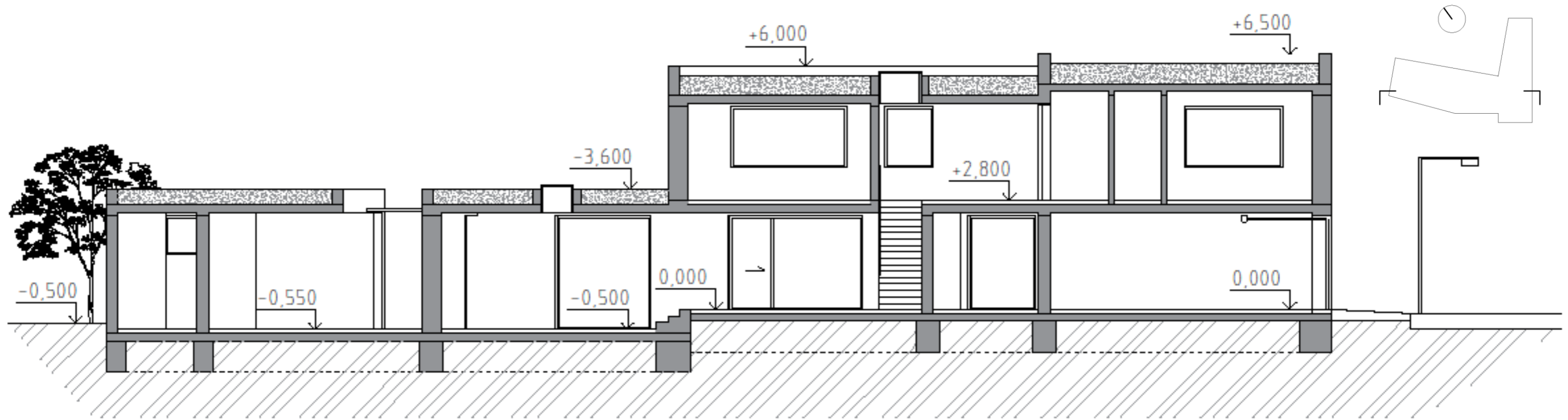
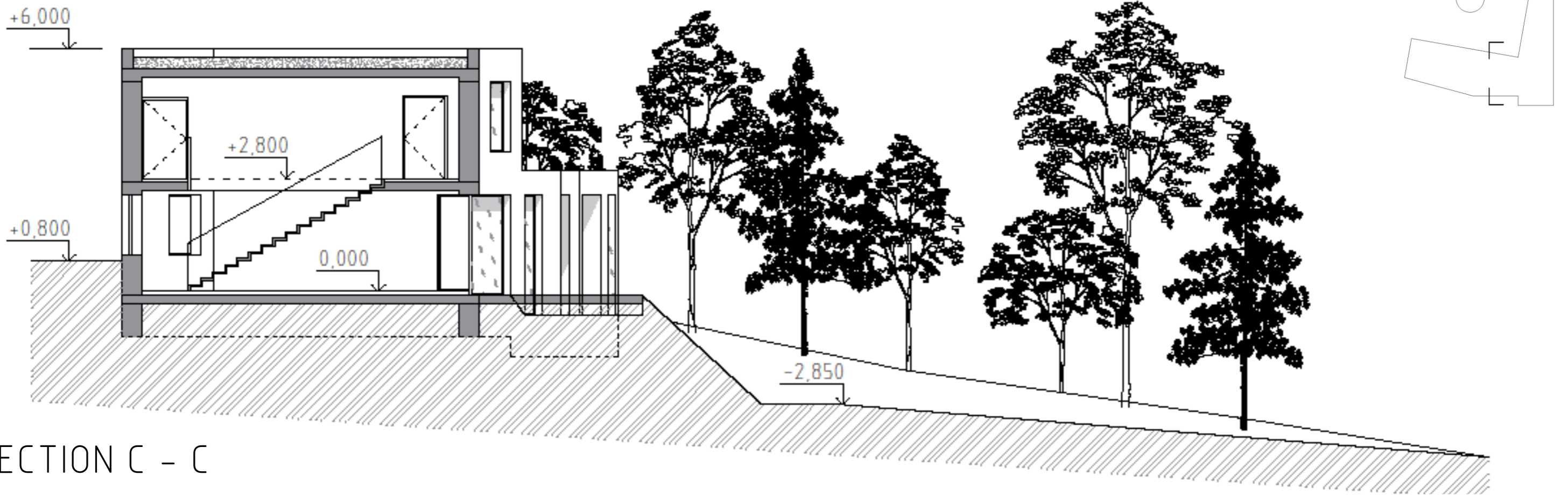
# 1st FLOOR

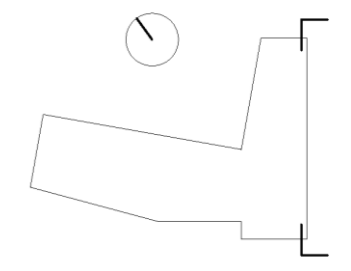
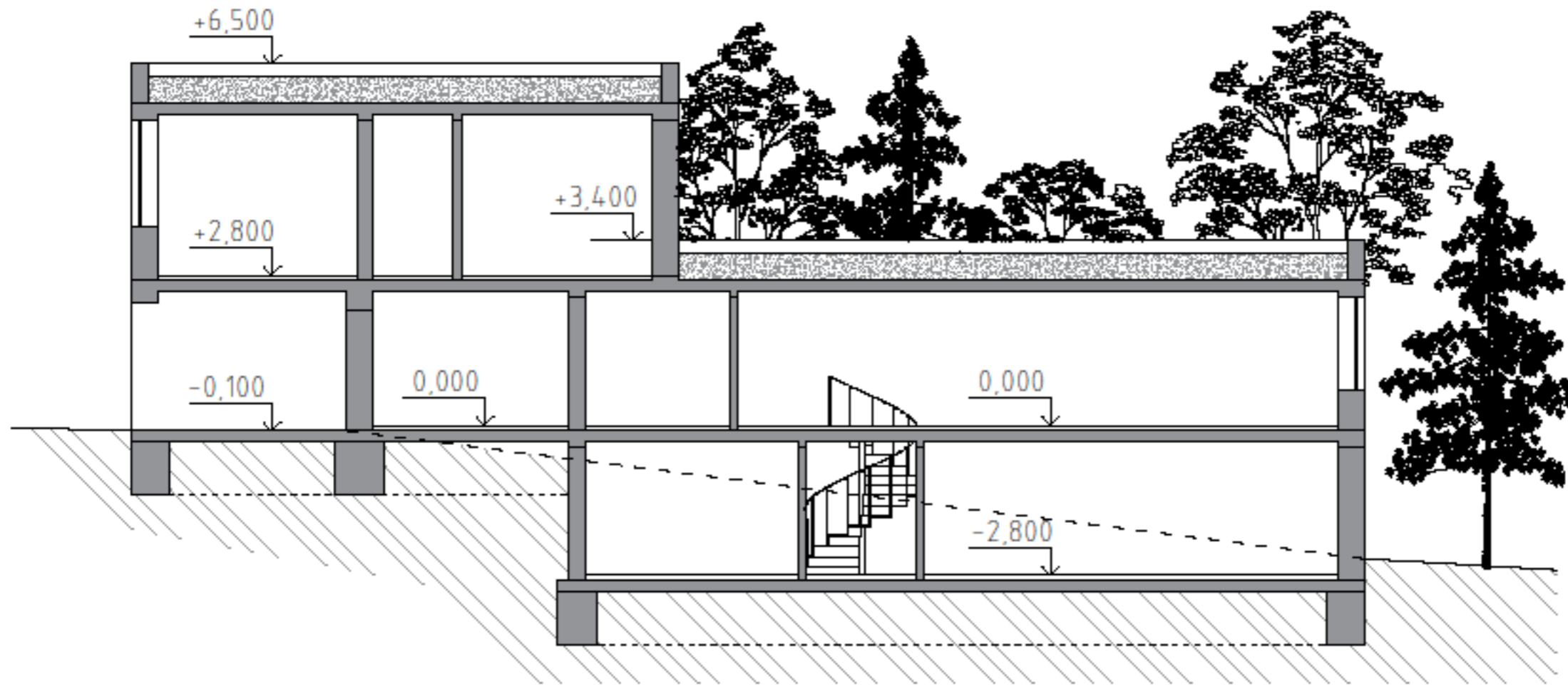
21.PLAY ROOM-37,4m<sup>2</sup> 22.BEDROOM-19,8m<sup>2</sup> 23.BEDROOM-18,8m<sup>2</sup> 24.MAIN BEDROOM-25,4m<sup>2</sup>  
 25.GUEST ROOM-13,3m<sup>2</sup> 26.BATHROOM-6,9m<sup>2</sup> 27.WC-1,5m<sup>2</sup> 28.BATHROOM AND WC-5,6m<sup>2</sup>  
 29.WALKING VEGETATION ROOF-72,2m<sup>2</sup> 20.WALKING VEGETATION ROOF-58,2m<sup>2</sup>



# 2nd FLOOR

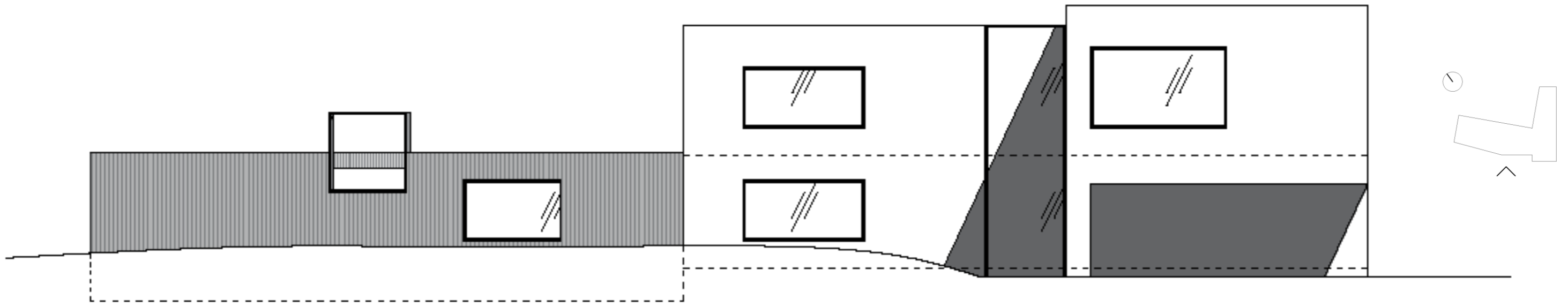
1:100



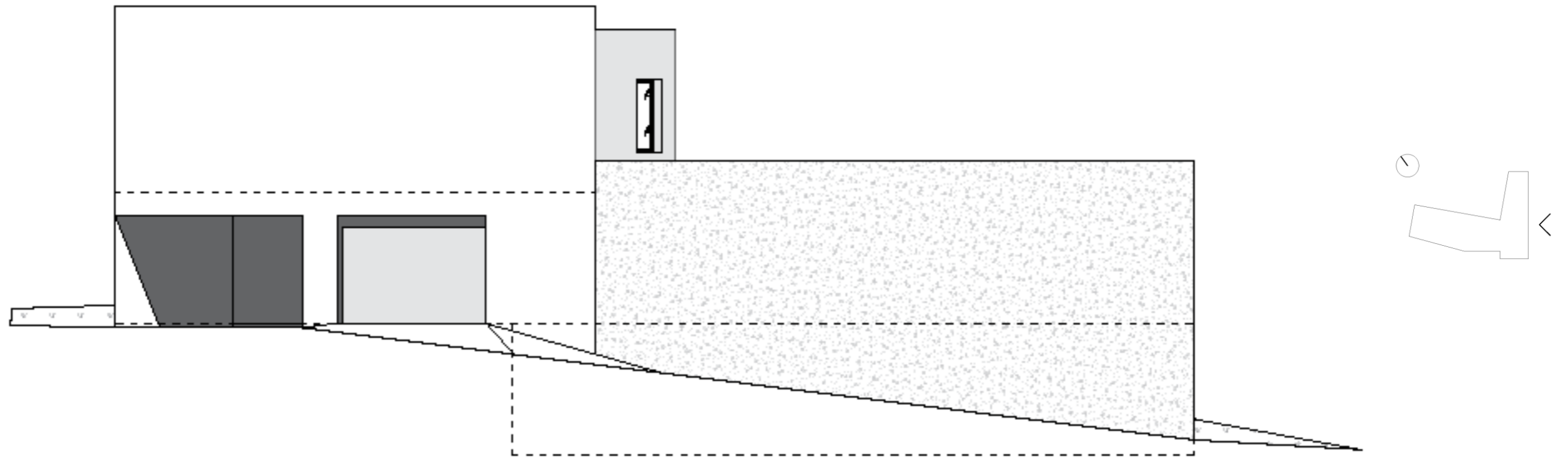


SECTION B-B

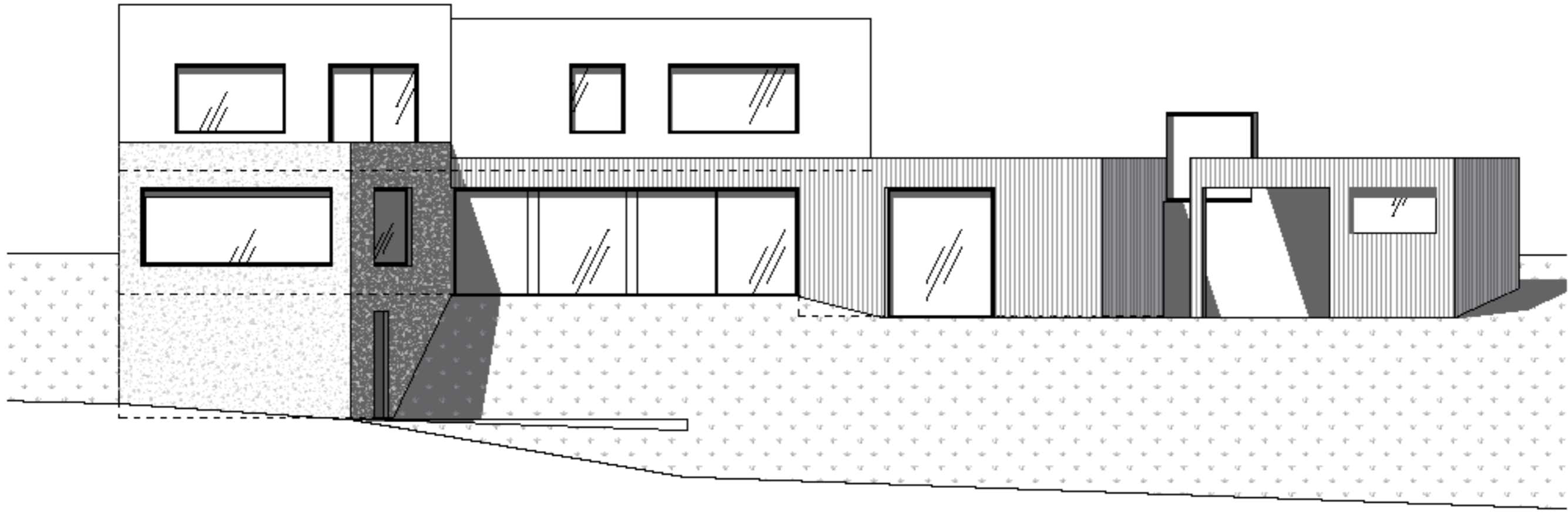
1:100



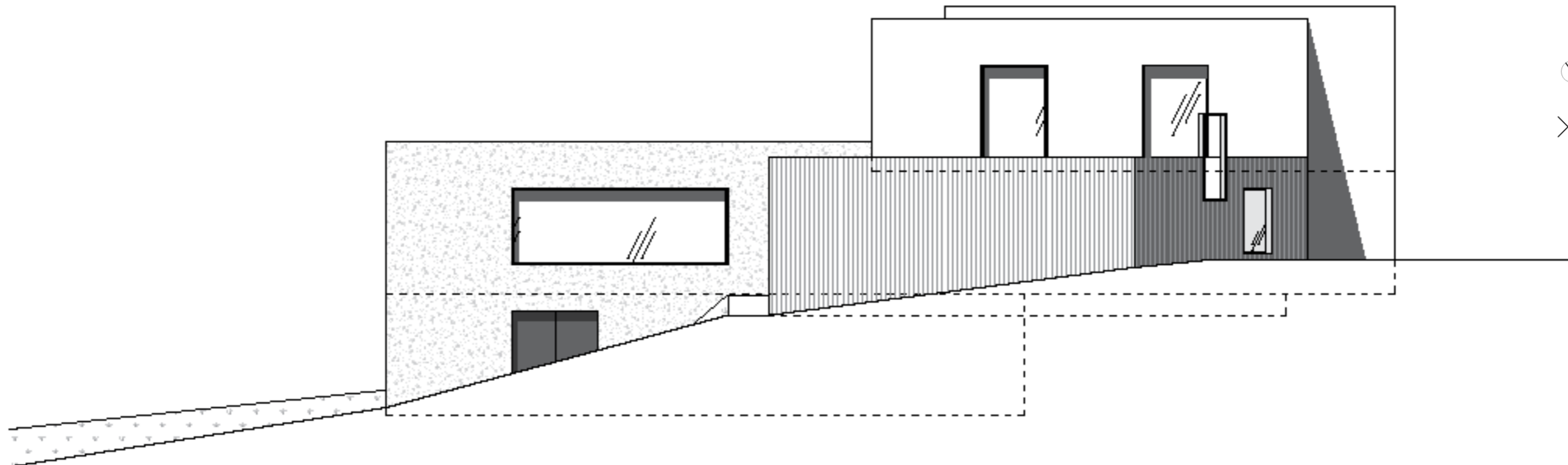
SOUTHWEST



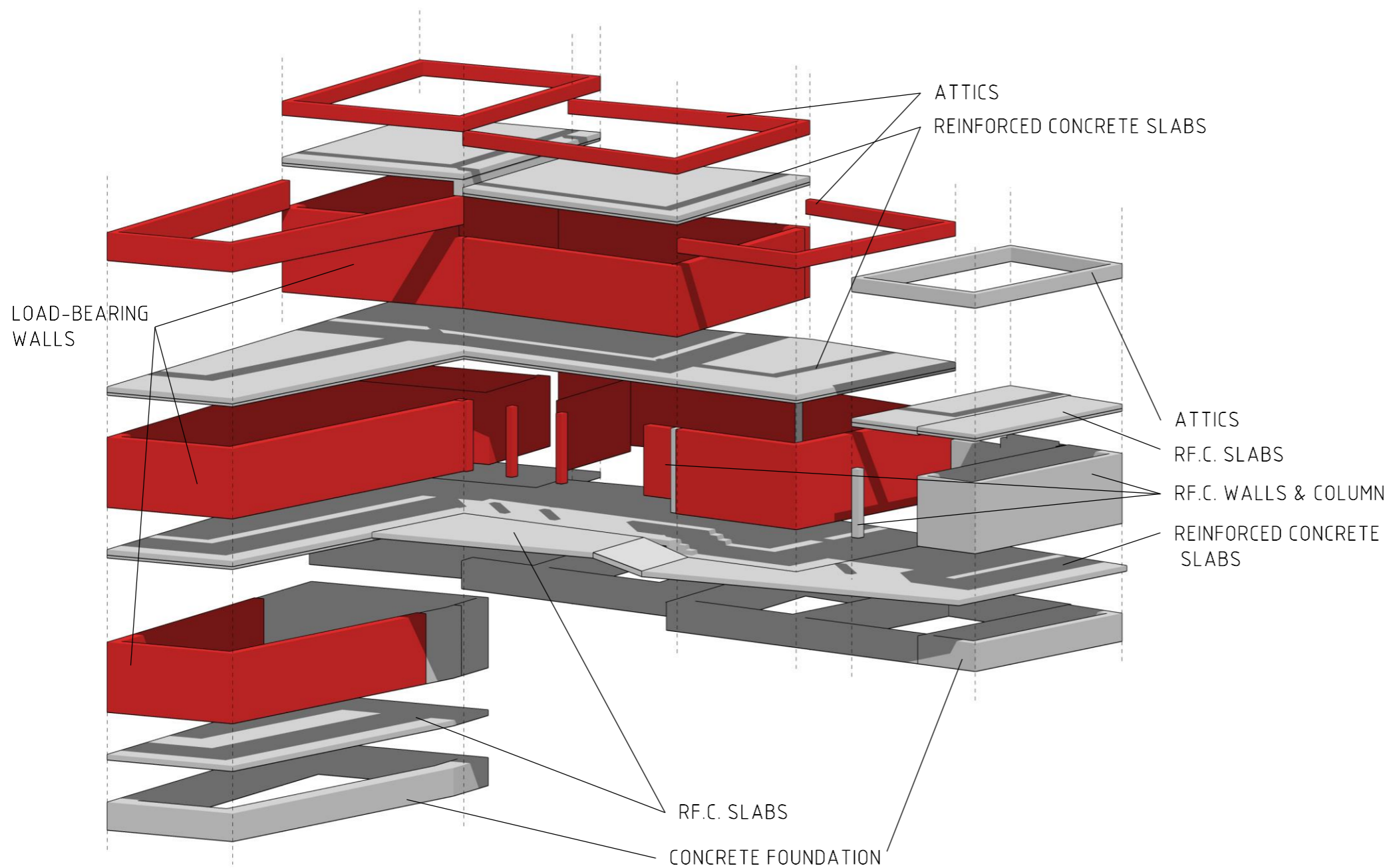
SOUTHEAST



NORTHEAST



NORTHWEST



THE LOAD-BEARING STRUCTURE CONSISTS OF CONCRETE FOUNDATION ON WHICH IS A REINFORCED CONCRETE SLAB. THE MAIN VERTICAL LOAD-BEARING STRUCTURES CONSIST OF WALLS AND COLUMNS MADE OF POROTHERM 380MM CERAMIC BLOCKS (PERIPHERAL WALLS) AND POROTHERM 300MM INNER LOAD-BEARING WALLS. DUE TO THE LARGE SPAN ABOVE THE MAIN LIVING AREA (1ST FLOOR), THE BEAM IS CONNECTED WITH 2 REINFORCED CONCRETE COLUMNS. THE VERTICAL LOAD-BEARING STRUCTURE OF THE RELAXATION PART AND THE PART OF THE BASEMENT ARE FORMED BY REINFORCED CONCRETE WALLS AND COLUMNS MADE OF DT BLOCKS. THE ATTICS ARE MADE OF CERAMIC BLOCKS/CONCRETE STRUCTURE MADE OF DT BLOCKS. PERIMETER STRUCTURES ARE INSULATED WITH INSULATION FROM BASALT FACADE CONTACT BOARDS WITH GLUE AND ANCHORS, THEY ARE FURTHER PLASTERED OR LINED WITH CLADDING MATERIAL. IN THE BASEMENT, THE PERIMETER CLADDINGS ARE INSULATED WITH NON-ABSORBENT XPS PANELS.

