



THEATRE DESIRE BONOGO

AUTHORS:

TERÁN, VICTORIA MARÍA
TORRES POSSE, ROSARIO



TEACHERS:

RODRIGUEZ ANIDO, PATRICIA
MANSUETO, MIGUEL

LOCATION:

BURKINA FASO, UAGADUGÚ, AFRICA



INDEX

REVIEW3

SITE ANALYSIS5-10

IDEA.....11-16

PLANIMETRY17-28

CONSTRUCTIVE DETAIL29-32

SUSTAINABILITY.....33-37

IMAGES39-47

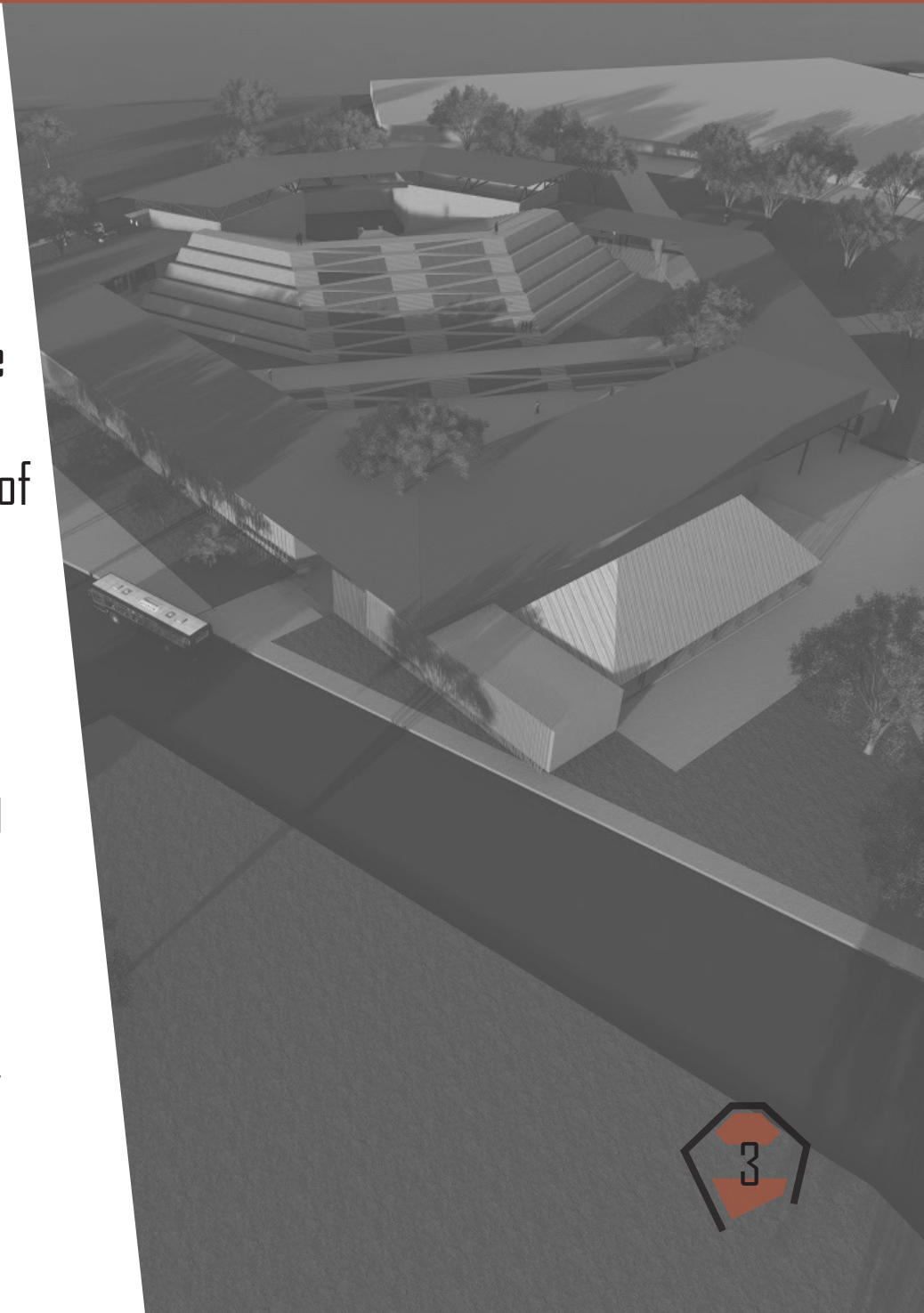


REVIEW

The objective of the project is the sustainable empowerment of the green desert amphitheater "Thesire Bonogo" within the complex "la termiterie choreographic development center" (CDC) seeking the renewal of the area's identity through the use of local materials and techniques.

It seeks to generate an introverted space by referring to the central space of African cultures, without denying the environment, this is materialized by projecting the streets surrounding the land.

As for sustainability, this is achieved through the use of local materials and techniques; In addition, the central space is proposed as a floodable plaza, which would allow the collection of water accumulated there during the rainy months.



SITE ANALYSIS



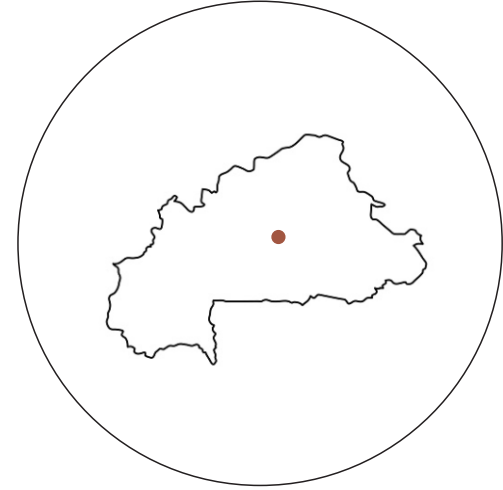
SITE ANALYSIS



AFRICA



BURKINA FASO



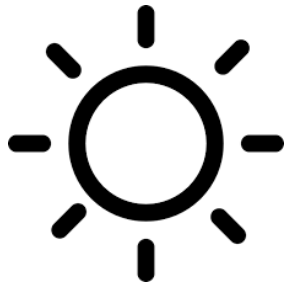
UAGADUGÚ

WEATHER

CULTURE

TWO SEASONS

----- DRY



OCTUBER-MAY



----- RAINY



APRIL-SEPTEMBER

LOT OF HUMIDITY



----- ARCHITECTURE

- ARCHITECTURE MADE WITH MUD
- MURAL ART

----- SCULPTURES

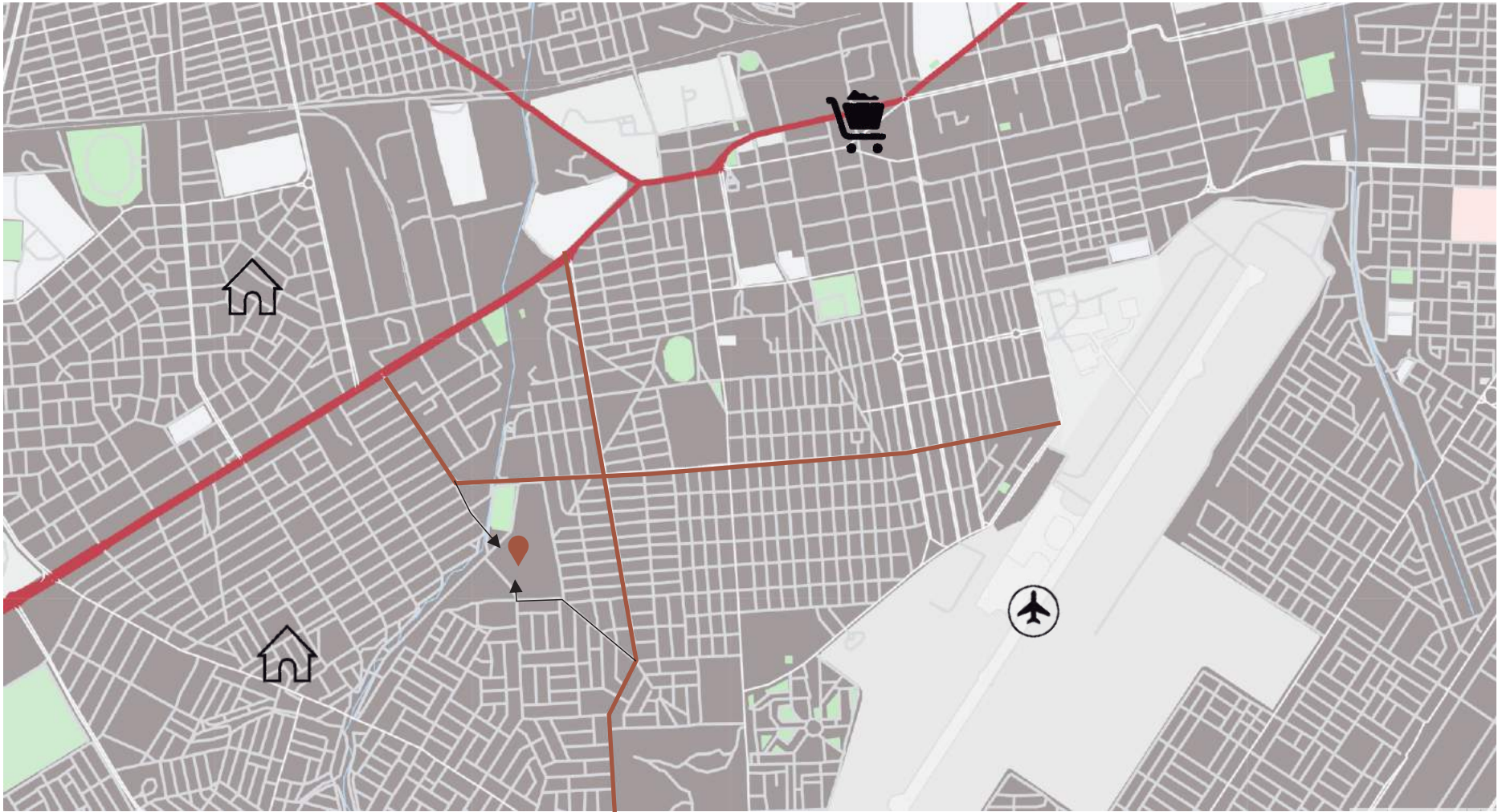
- WOOD AND BRONZE SCULPTURES

----- MUSIC Y DANCE

- IMPROVISED DANCES
- USE OF TRADITIONAL MASKS
- CONNECTION WITH SPIRITS AND ANCESTORS

THEY HAVE A LOT OF FAMOUS FESTIVALS SUCH AS THE FESPACO (PANAFRICAN FILM AND TELEVISION FESTIVAL IN UAGADUGU)

SITE ANALYSIS



SITE ANALYSIS



IDEA



IDEA

Due to the fragmentation present in the city and the loss of identity caused by persistent globalization, the aim is to communicate the area with the main surrounding streets, thus stitching the plot, while an introverted space is formed through a **central organization** that it causes feelings of peace, tranquility, spirituality and protection. These feelings are sought from the abstraction of the meaning of **traditional African masks**, which represent the connection between the human world and the ancestors, heroes and spirits; and the central organization is chosen since this is the one used in antiquity seeking the protection of the tribe.

THE MASKS

THE MASKS → CONNECTION → SPIRITS AND ANCESTORS

The masks are representations of ancestors, mythological heroes, or animal spirits. As sometimes happens with ancient traditions, its practice has been left aside with the passage of time and globalization. From the community they defend that the mask is the messenger that allows humans to communicate with the ancestors. They have the power to open a gap in the present and bring us into another dimension.



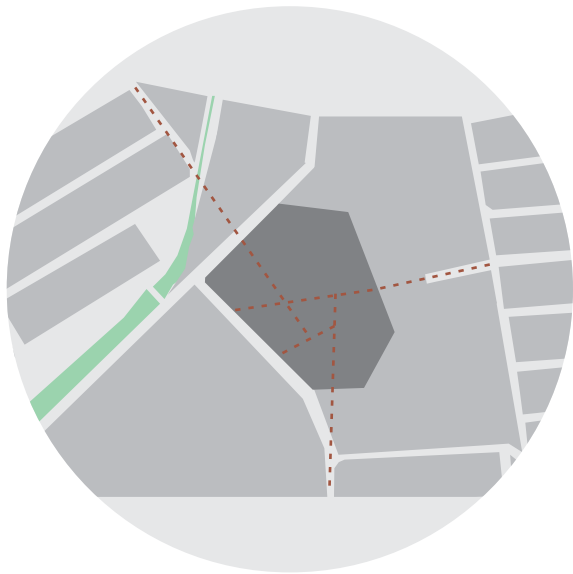
CENTRAL ORGANIZATION

CULTURAL → CENTRAL ORGANIZATION → PROTECTION

The intense visual control towards the interior and exterior is an aspect that derives from this care for the defense. The central space plays a strategic role in the organization of the complex, since this place is a meeting point for the inhabitants, thus lacking any type of building intended for this use.



IDEA



Project the surrounding streets to generate various accesses that decompress the large masses

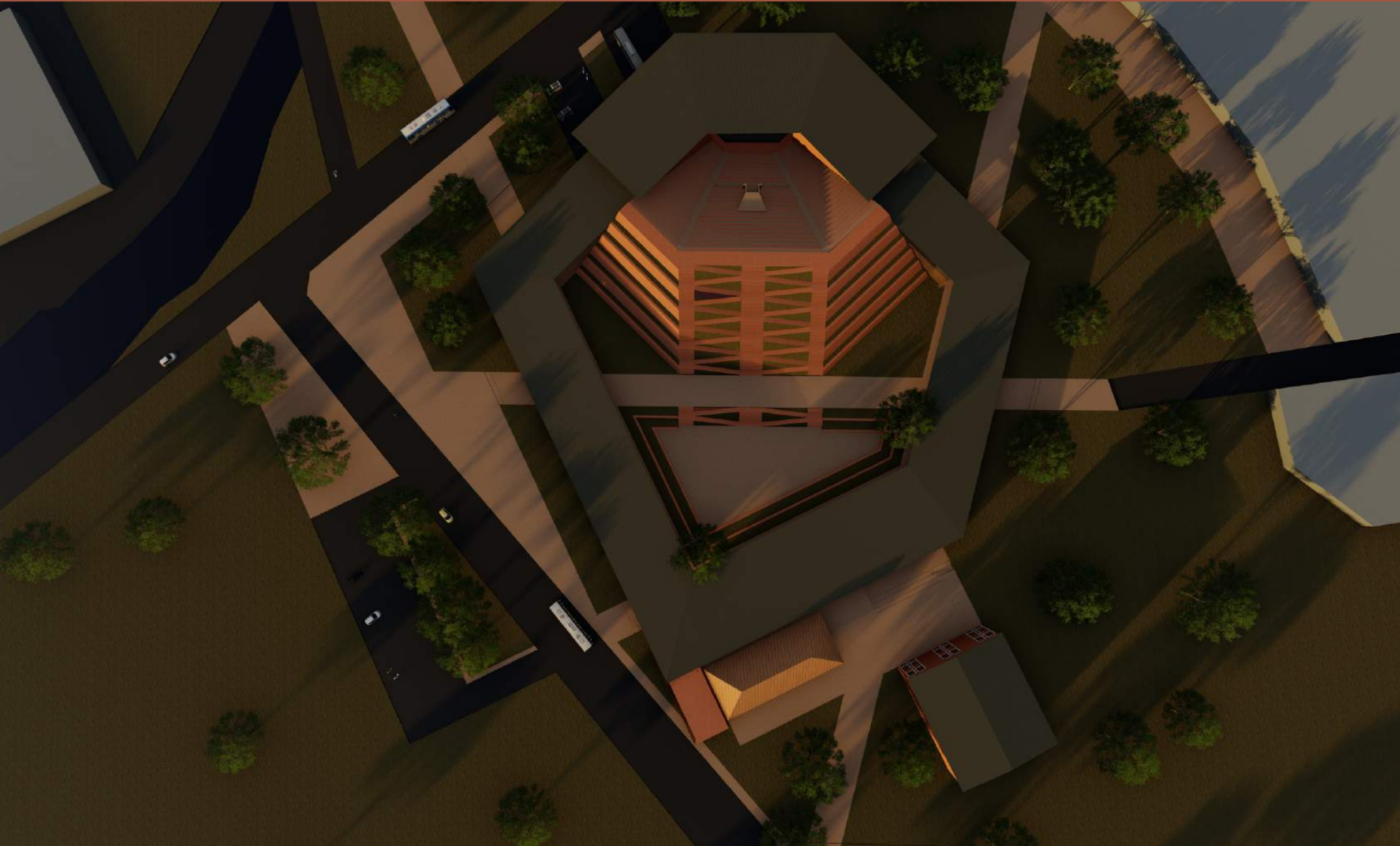


Central space generated and contained by linear volumes that are grouped around that center, thus giving it more privacy



This central space is responsible for articulating the linear volumes built

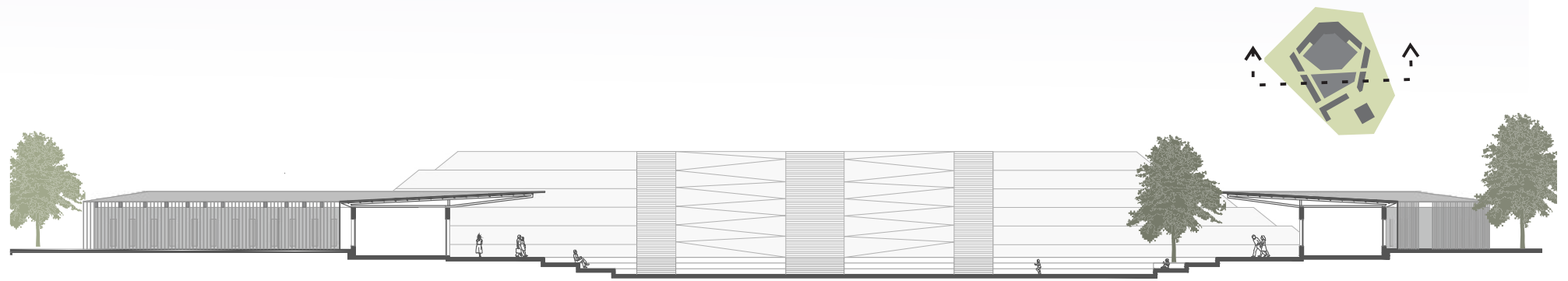
PLANIMETRY



SECTIONS

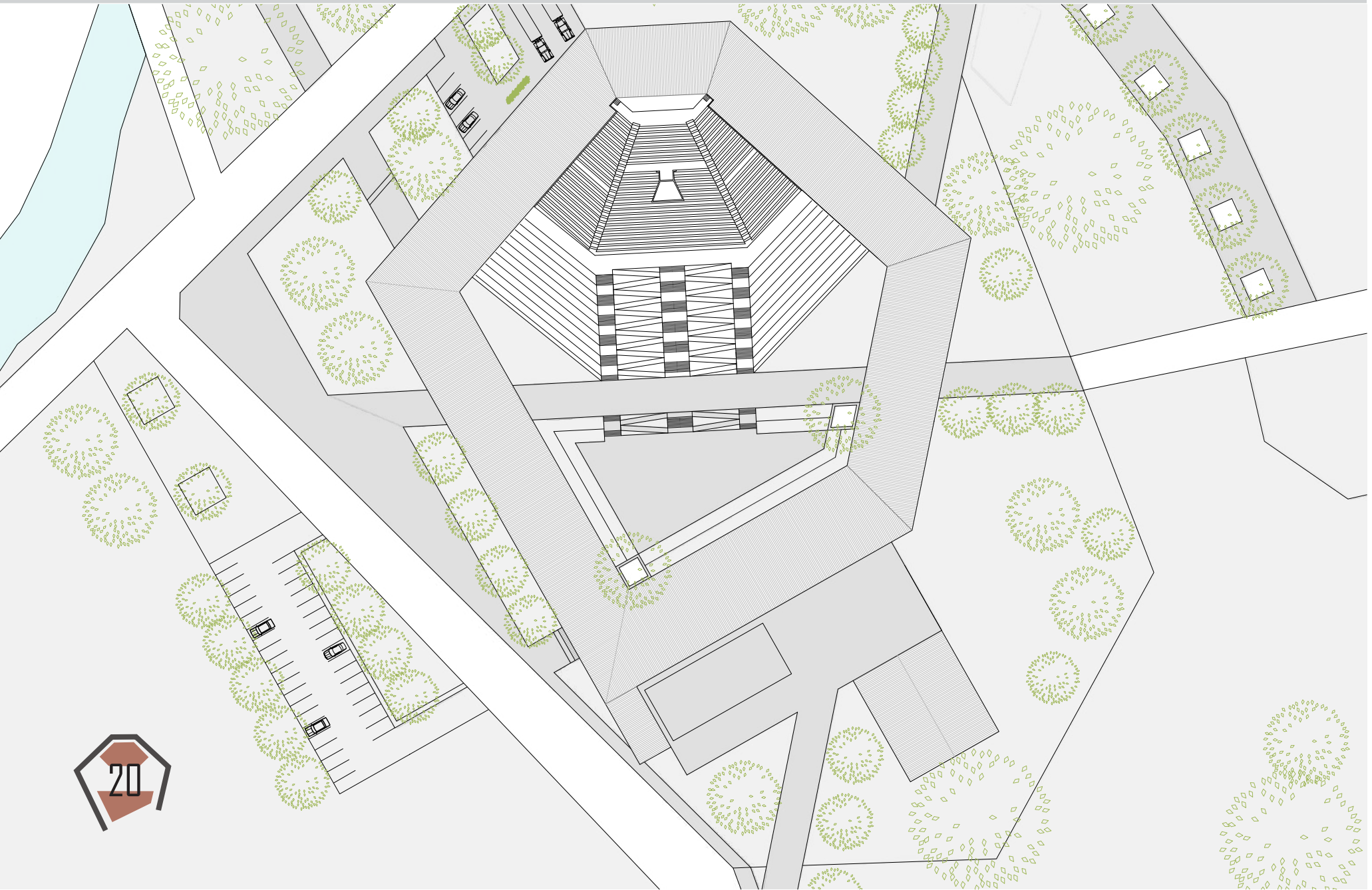


LONGITUDINAL SECTION

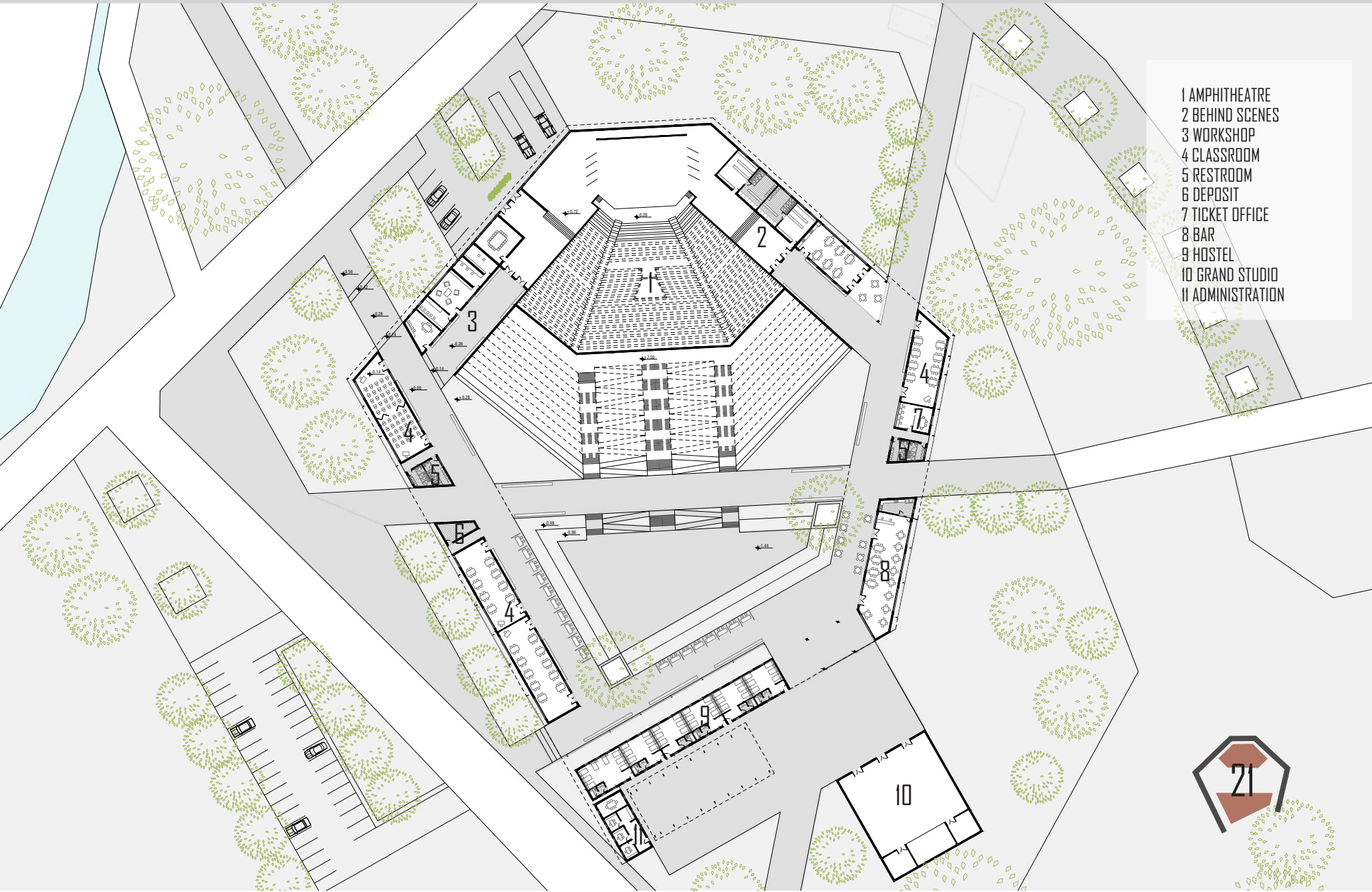


ACROSS SECTION

TOP PLAN

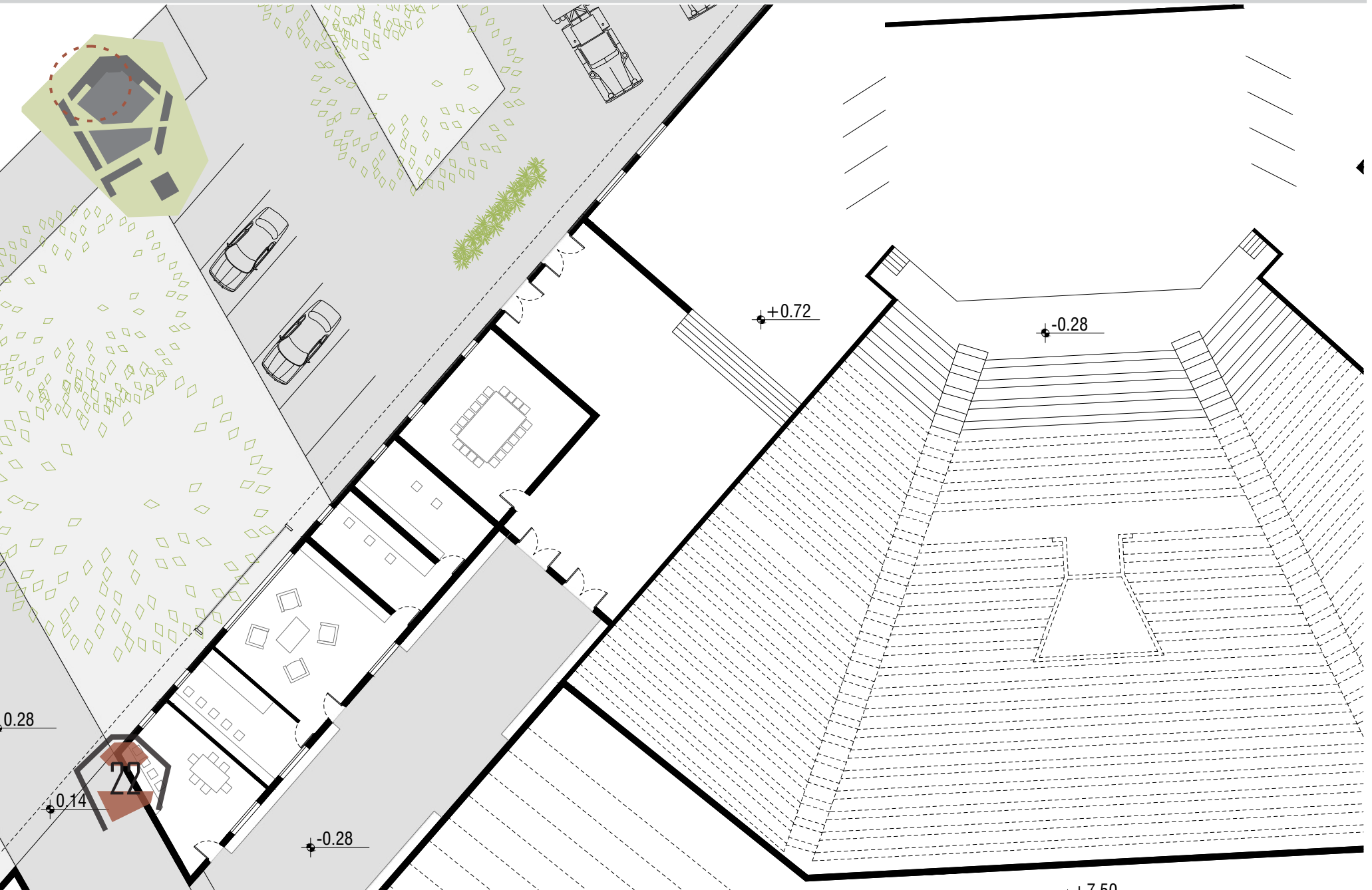


GENERAL PLAN

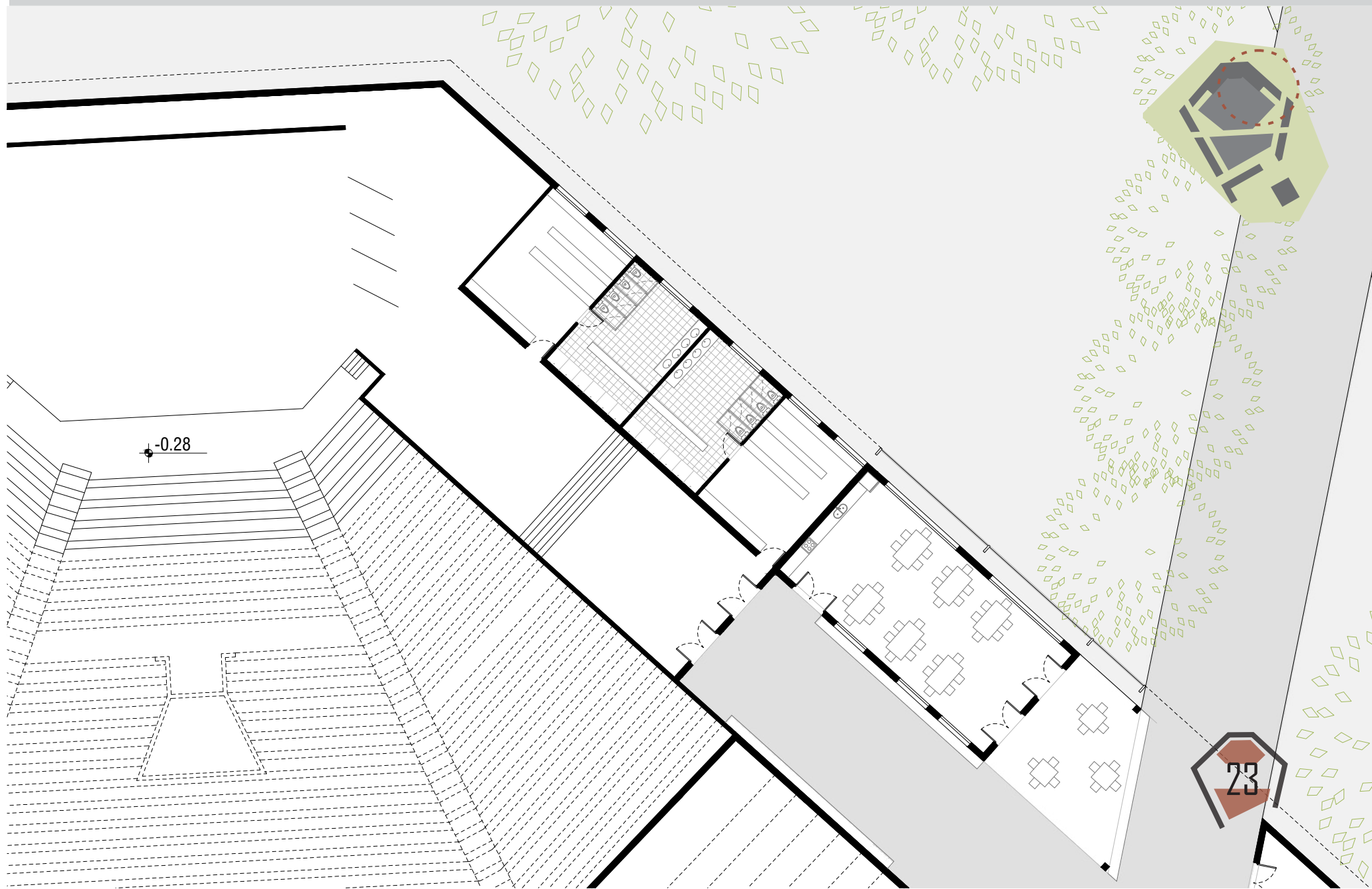


- 1 AMPHITHEATRE
- 2 BEHIND SCENES
- 3 WORKSHOP
- 4 CLASSROOM
- 5 RESTROOM
- 6 DEPOSIT
- 7 TICKET OFFICE
- 8 BAR
- 9 HOSTEL
- 10 GRAND STUDIO
- 11 ADMINISTRATION

PLAN SECTOR 1



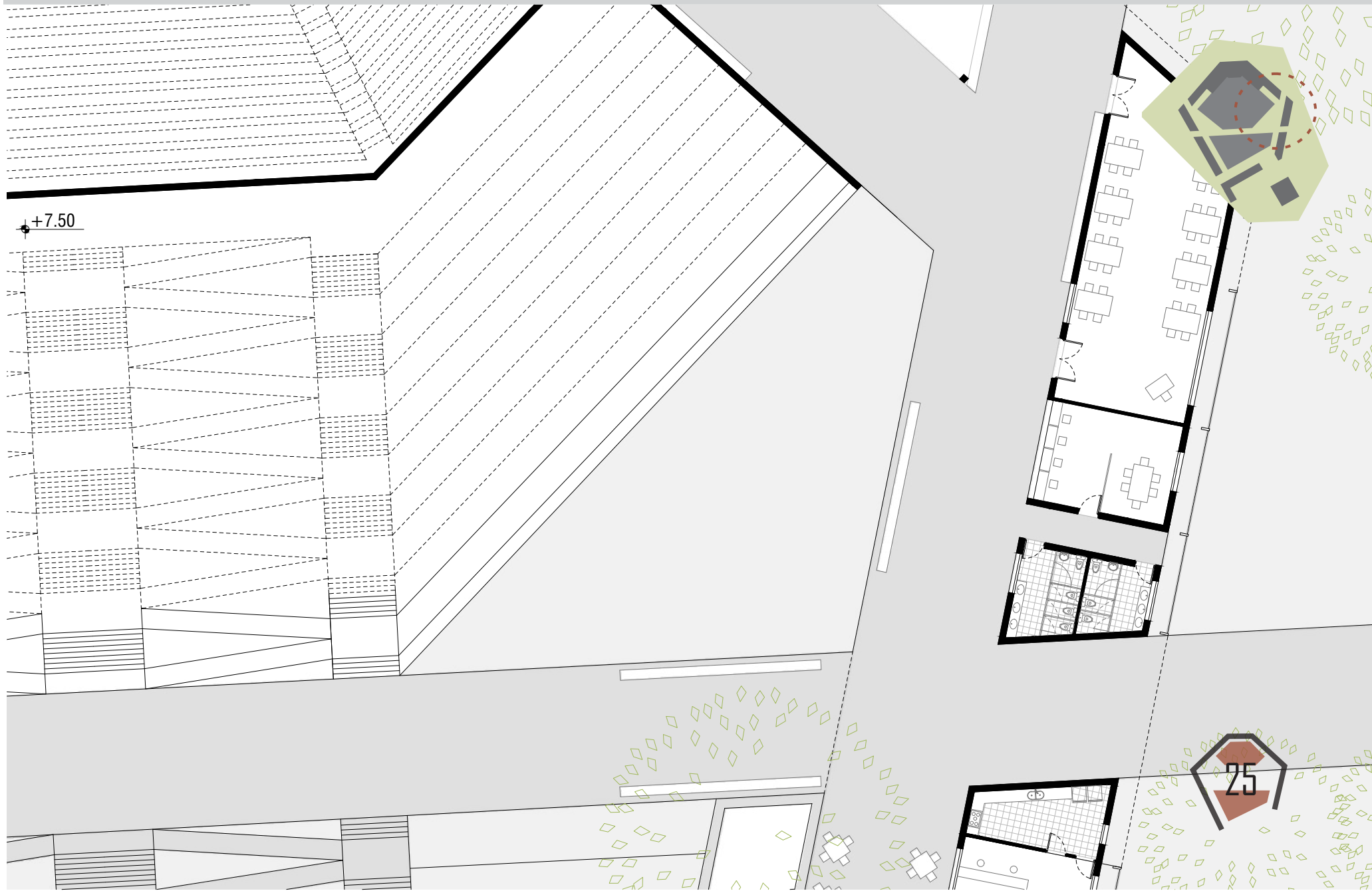
PLAN SECTOR 2



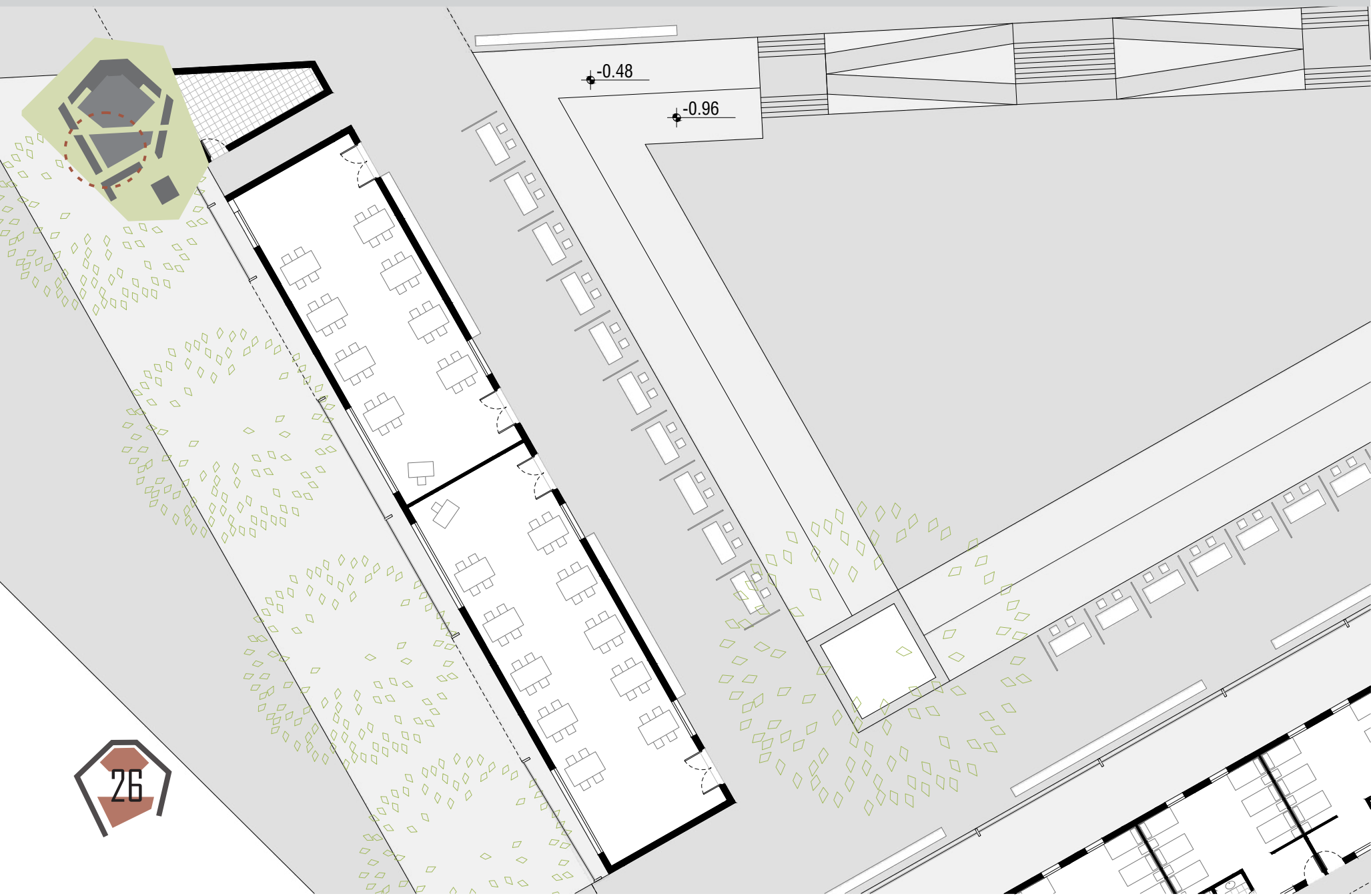
PLAN SECTOR 3



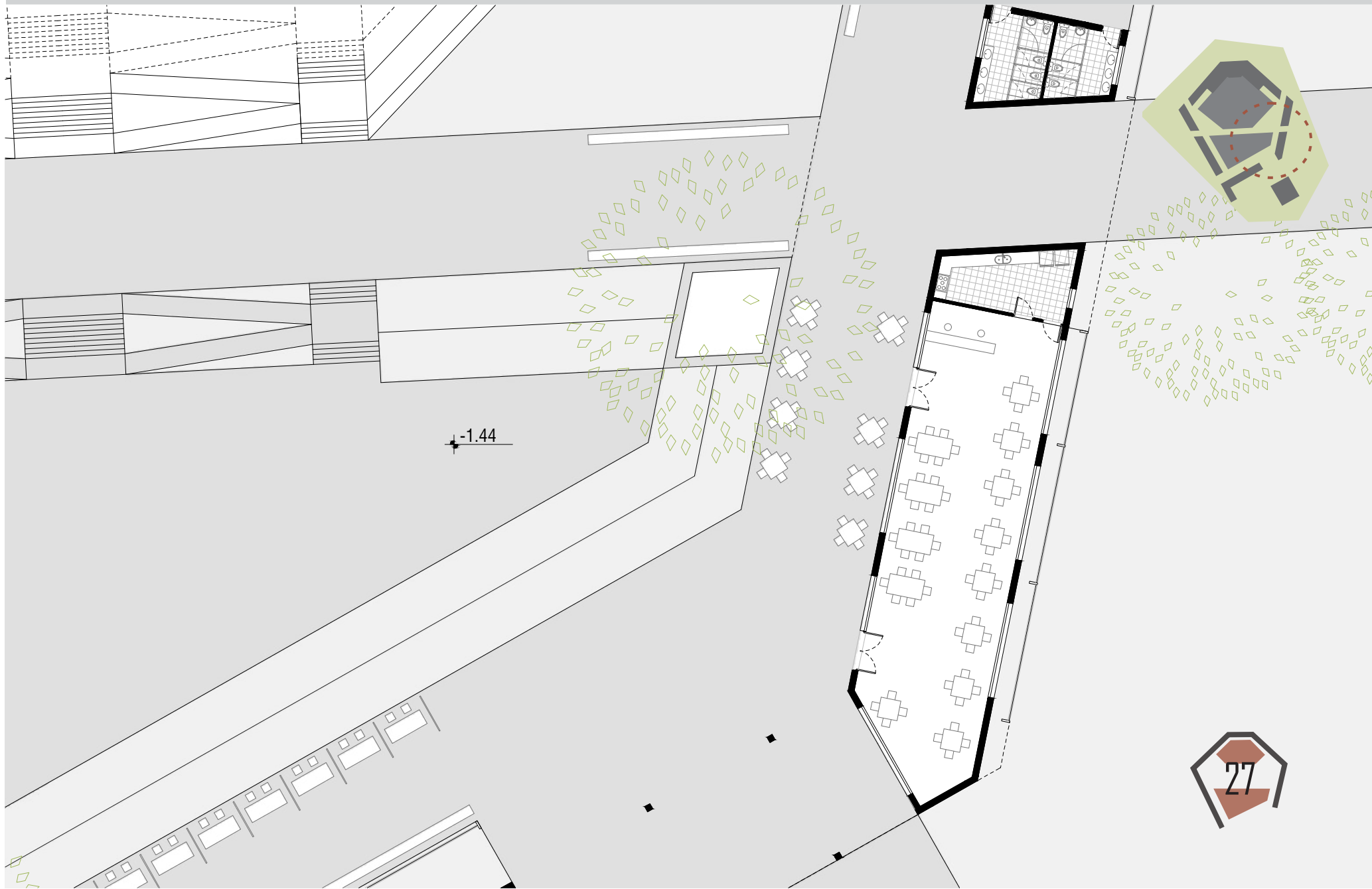
PLAN SECTOR 4



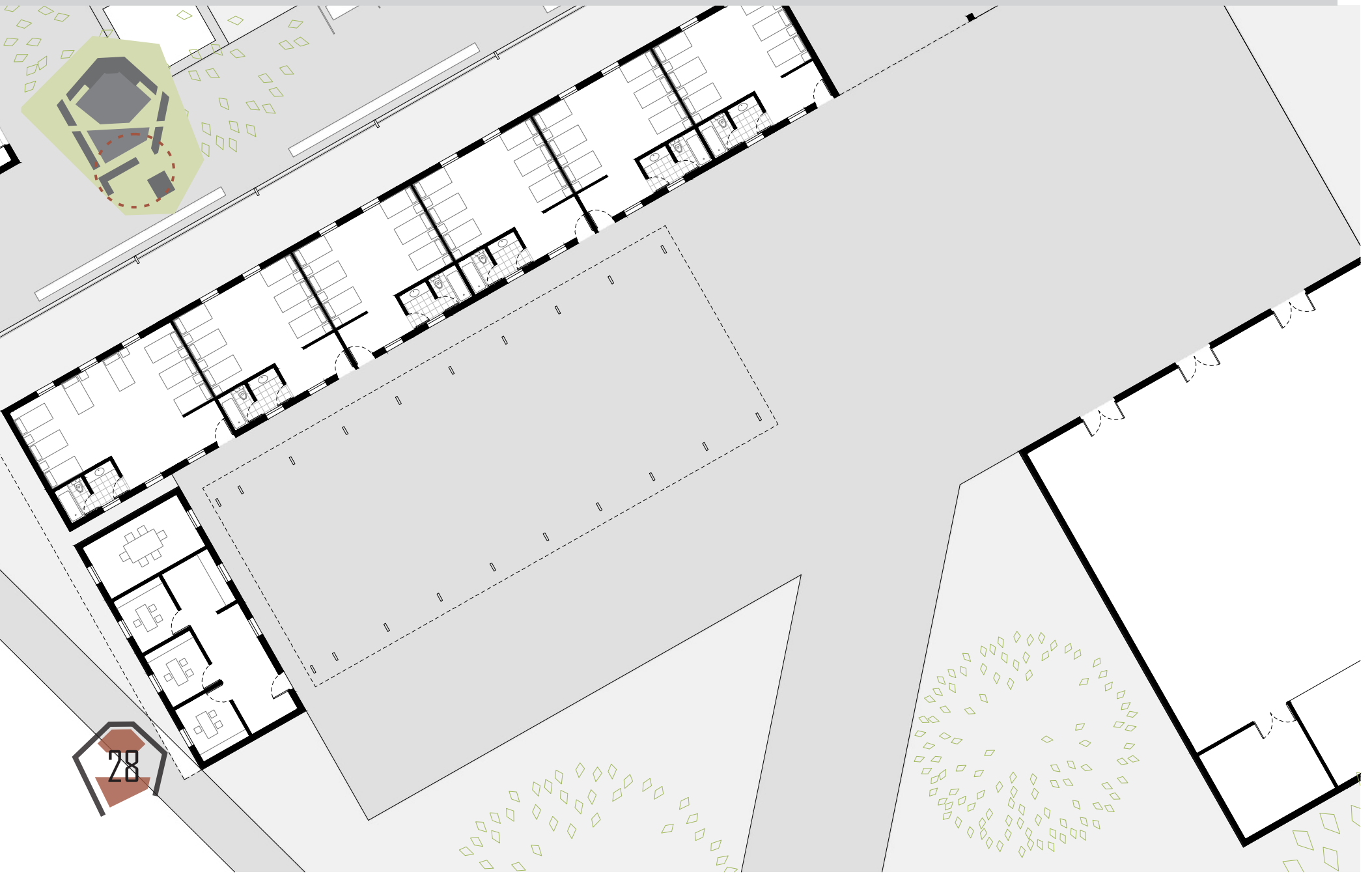
PLAN SECTOR 5



PLAN SECTOR 6



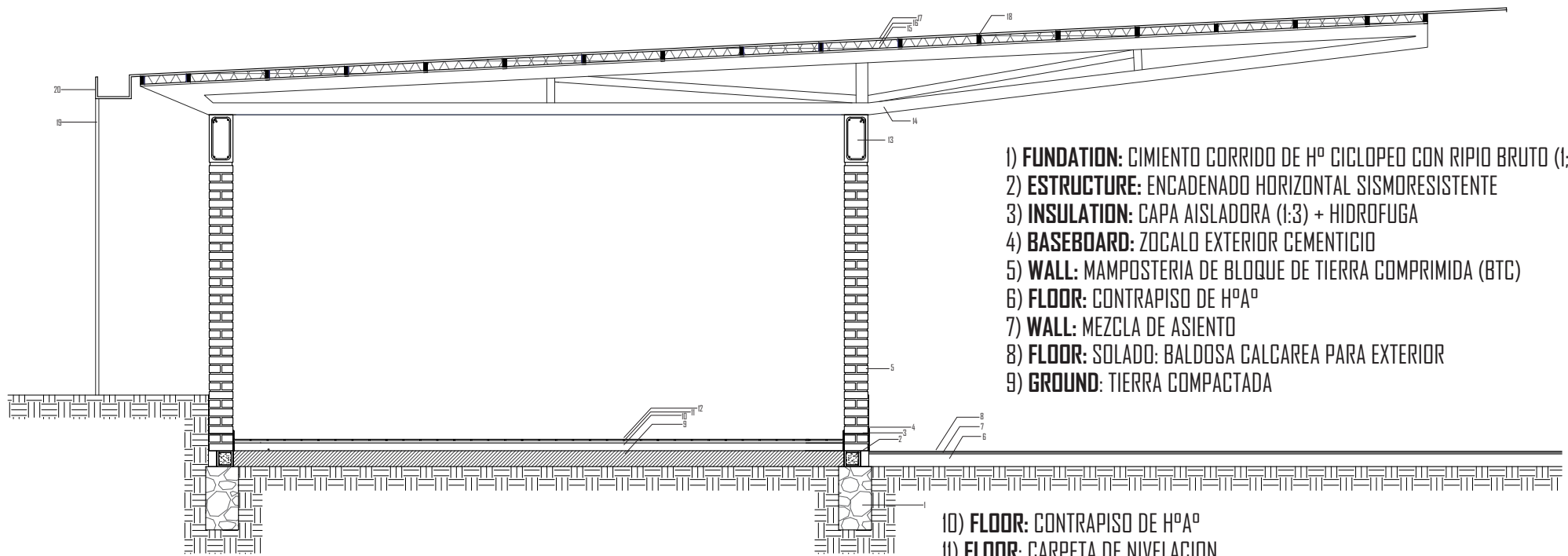
PLAN SECTOR 7



CONSTRUCTIVE DETAIL



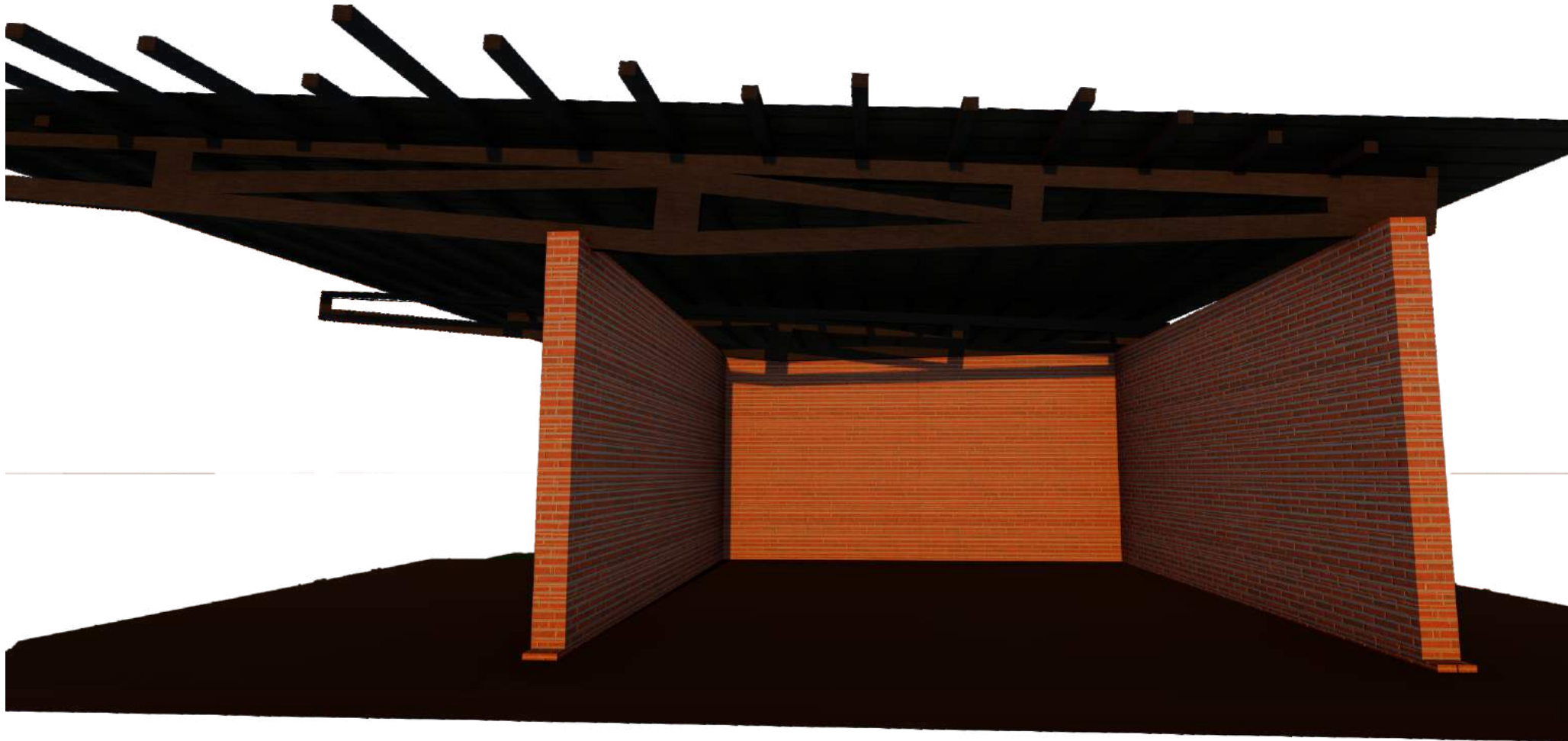
CONSTRUCTIVE DETAIL ESC 1:75



- 1) **FUNDATION:** CIMIENTO CORRIDO DE Hº CICLOPEO CON RIPIO BRUTO (1;5;8)
- 2) **ESTRUCTURE:** ENCADENADO HORIZONTAL SISMORESISTENTE
- 3) **INSULATION:** CAPA AISLADORA (1:3) + HIDROFUGA
- 4) **BASEBOARD:** ZOCALO EXTERIOR CEMENTICIO
- 5) **WALL:** MAMPOSTERIA DE BLOQUE DE TIERRA COMPRIMIDA (BTC)
- 6) **FLOOR:** CONTRAPISO DE HºAº
- 7) **WALL:** MEZCLA DE ASIENTO
- 8) **FLOOR:** SOLADO: BALDOSA CALCAREA PARA EXTERIOR
- 9) **GROUND:** TIERRA COMPACTADA

- 10) **FLOOR:** CONTRAPISO DE HºAº
- 11) **FLOOR:** CARPETA DE NIVELACION
- 12) **FLOOR:** SOLADO: BALDOSA CERAMICA
- 13) **ESTRUCTURE:** ENCADENADO HORIZONTAL SUPERIOR SISMORESISTENTE
- 14) **ROOF ESRTUCTURE:** ESTRUCTURA DEL TECHO: VIGA METALICA
- 15) **ROOF ACCESORIES:** ENTABLONADO DE MADERA
- 16) **INSULATION:** AISLACIONES: BARRERA DE VAPOR, AISLACION TERMICA, AISLACION HIDROFUGA
- 17) **ROOF:** CHAPA GALVANIZADA
- 18) **ROOF ESTRUCTURE:** VIGAS SECUNDARIAS METALICAS
- 19) **CANE:** CAÑAS
- 20) **GUTTER:** CANALETA

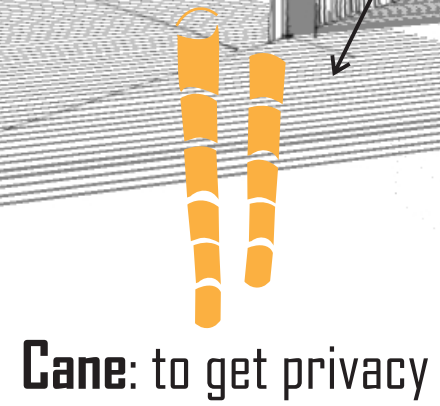
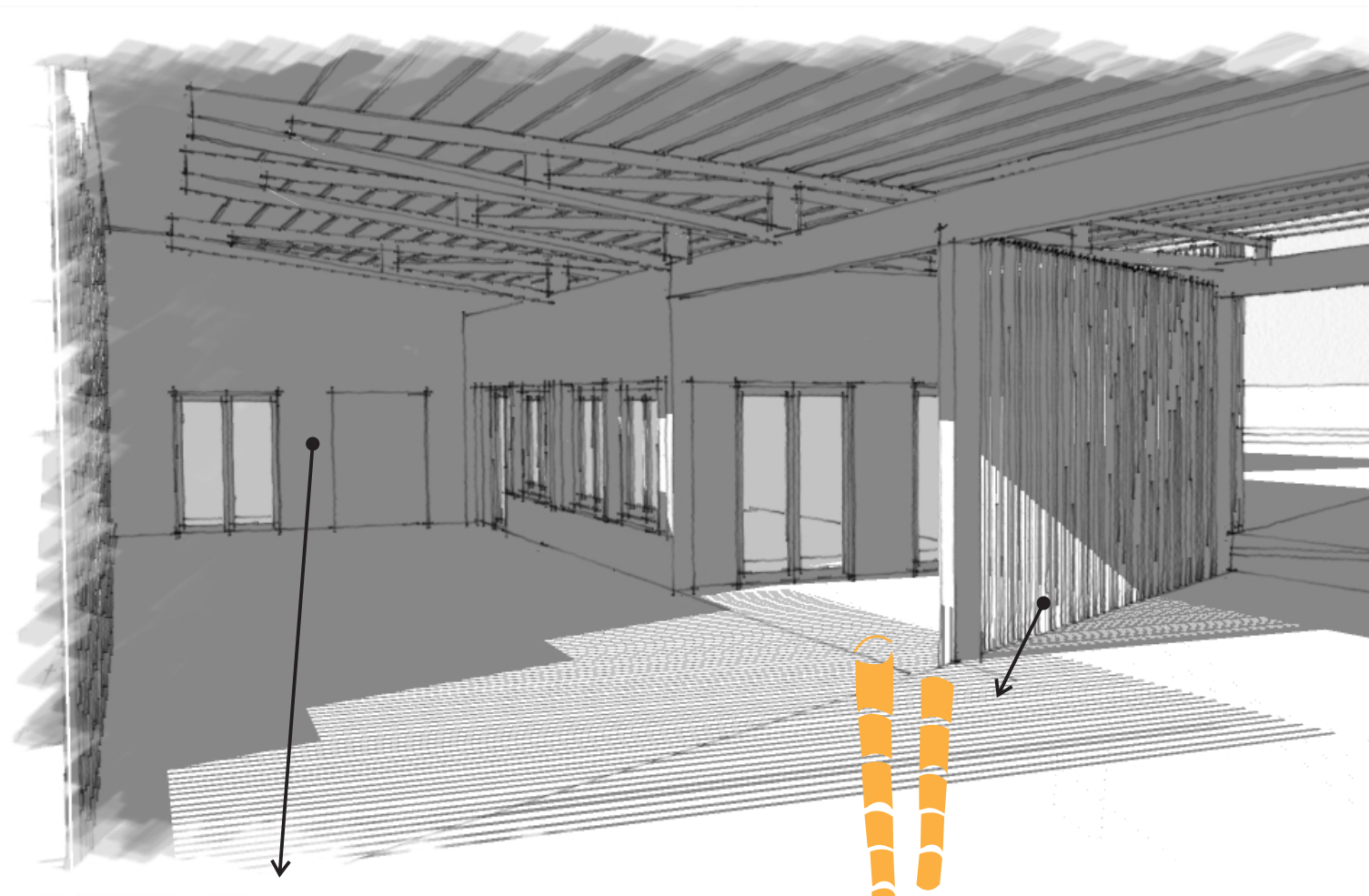
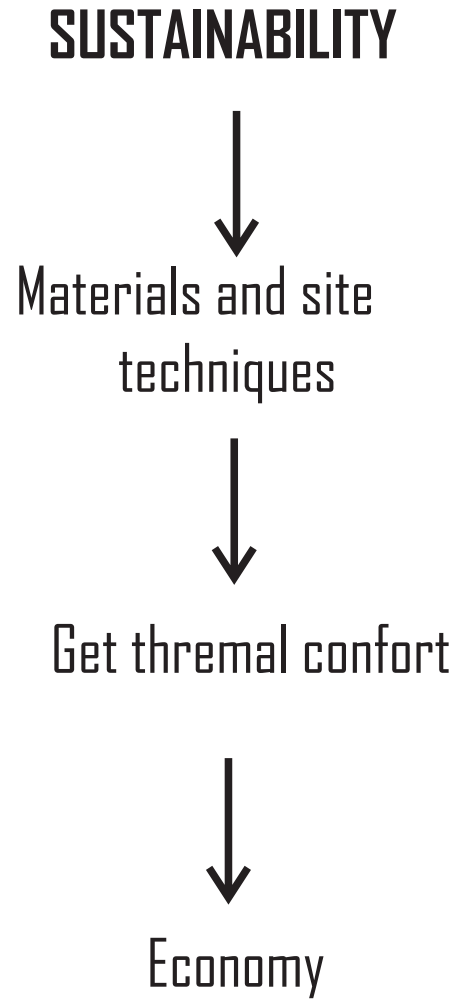
CORTE CONSTRUCTIVO PERSPECTIVADO



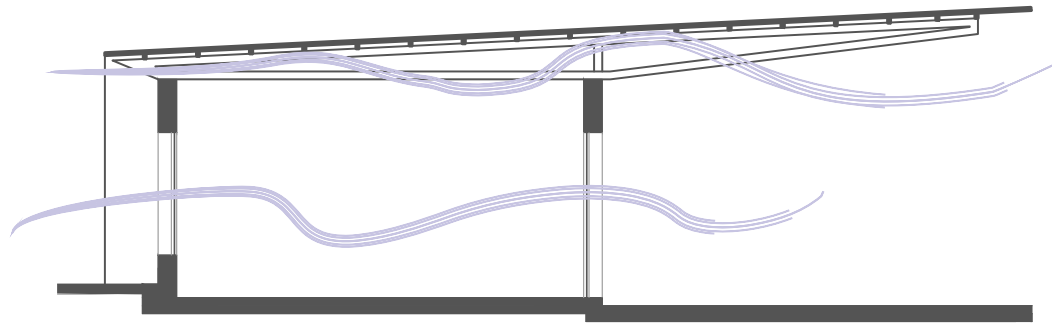
SUSTAINABILITY



SUSTAINABILITY: MATERIALS



SUSTAINABILITY

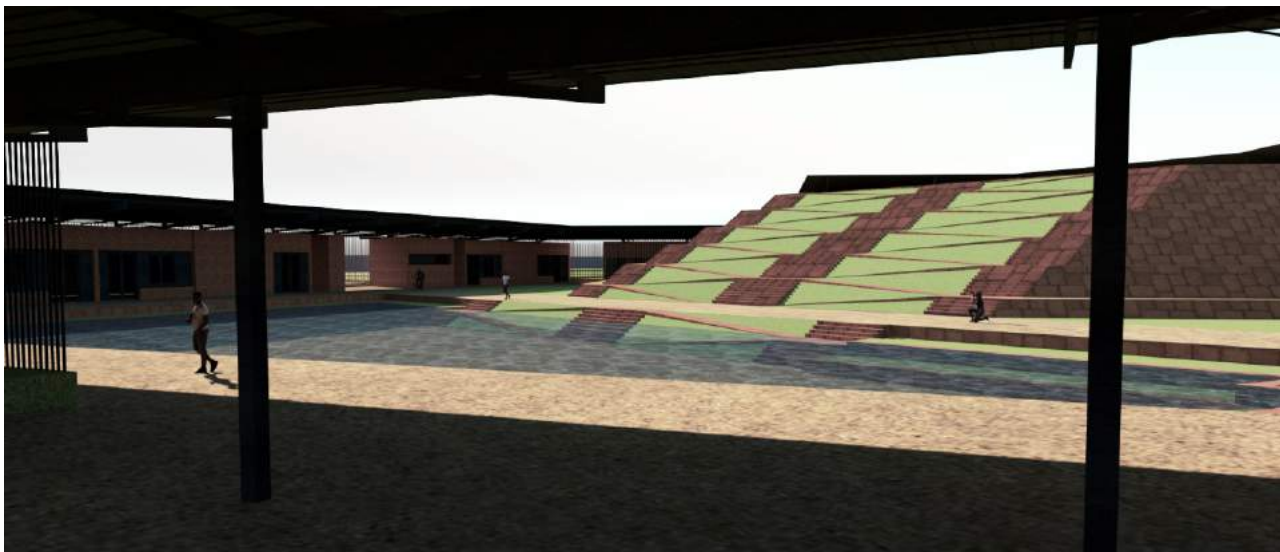
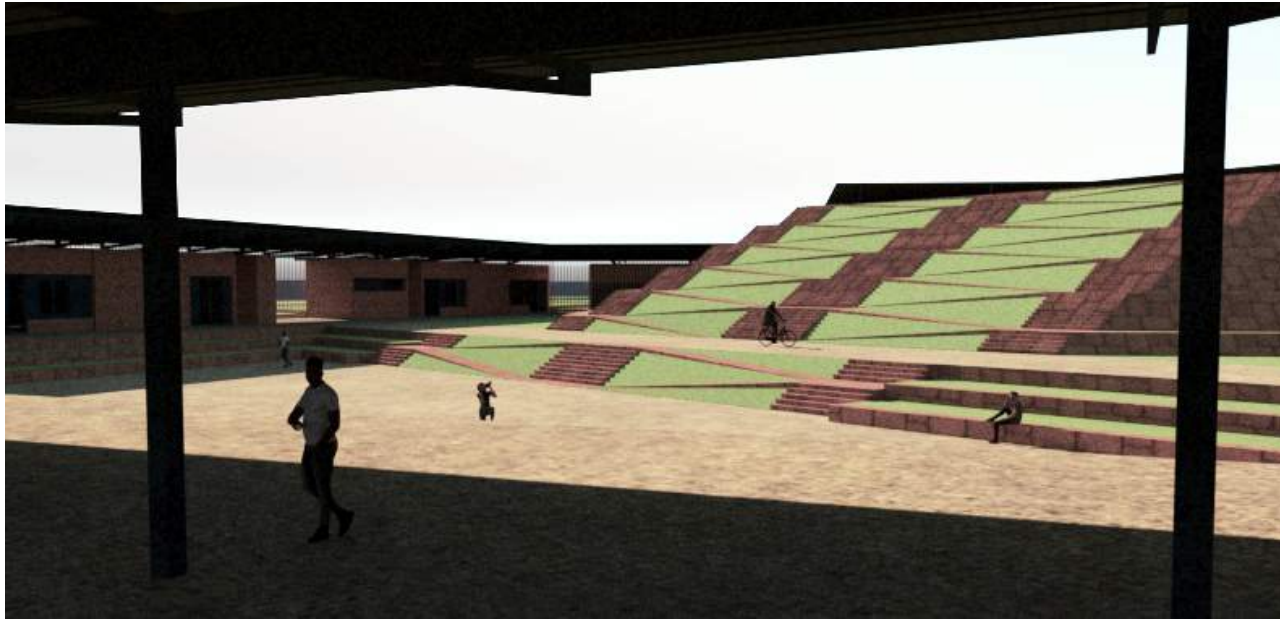


- Roof elevation to ensure proper ventilation and air movement.
- Narrow and long volumes, with windows on both sides, making cross ventilation possible.

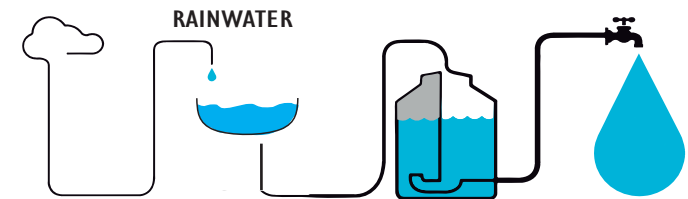
- Use of the ground that surrounds the terrain to obstruct external sounds of the city.



SUSTENTABILIDAD: PLAZA INUNDABLE



- Central space that functions as a floodplain plaza, so in the rainy months it is used for the collection of water and is used as a source
- The staggering and large size of the central space allow multiplicity of uses, such as outdoor amphitheater, recreation, education.



IMAGES



