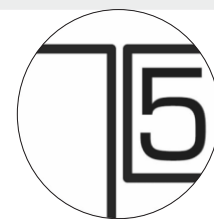


THEATRE POPULAIRE



TALLER COMBES VII



2020

AUTHORS

GEREZ
VILLARREAL,
MARÍA SOFÍA



ORTIZ,
MARÍA
DANIELA



TEACHERS:

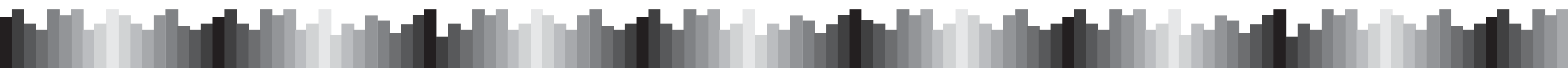
-ARQUITECTA RODRIGUEZ ANIDO, PATRICIA
-ARQUITECTO MANSUETO, MIGUEL
-ARQUITECTO MONTES DE OCA, AUGUSTO



INSPIRELI AWARDS

THÉÂTRE POPULAIRE IDEA

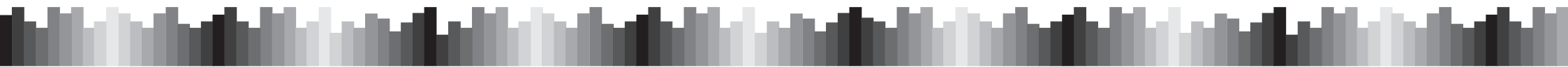
RÉHABILITATION OF THE THÉÂTRE POPULAIRE DÉSIRÉ BONOGO



SECTOR OF REVIEW

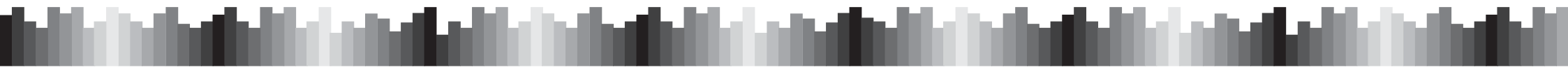


- THEATRE POPULAIRE
- MAIN STREETS



URBAN BARRIERS

- THEATRE POPULAIRE
- AIRPORT
- MILITARY CAMP
- WATER DAM
- STREAM



FORMA REVIEW



TRAMA URBANA

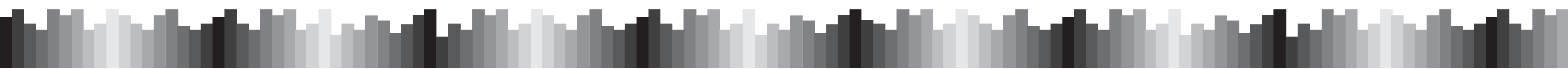
- THEATRE POPULAIRE
- STREAM
- MAIN STREETS
- IRREGULAR PLOT
- REGULAR PLOT

BUILDING TYPE

-HOMES MOSTLY ON THE GROUND FLOOR, BETWEEN PARTY WALLS, ON THE MUNICIPAL LINE OR WITHDRAWN.

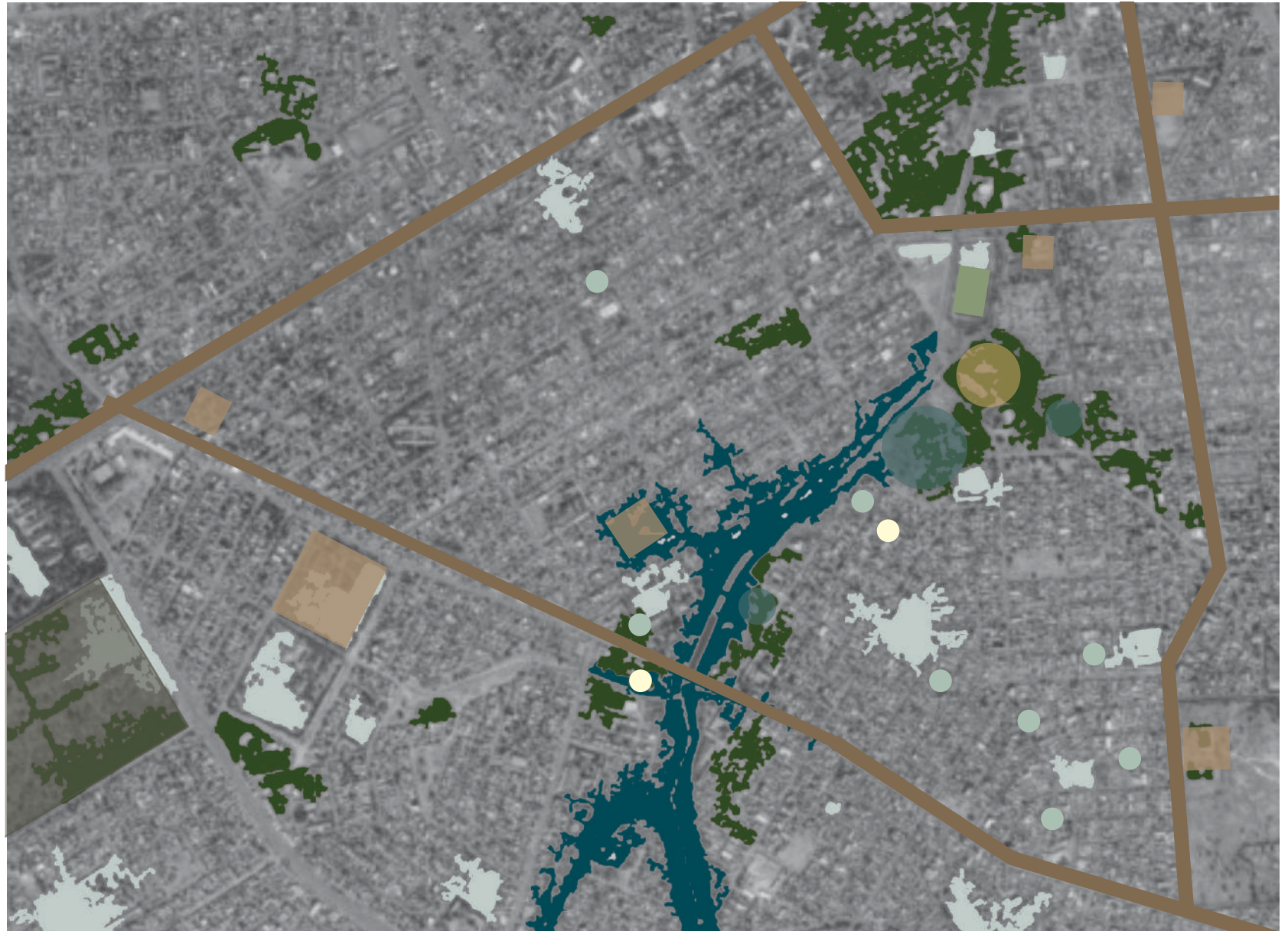


THE CONTEXT NEXT TO THE PROJECT IPRESENTS PRECARIARY RESIDENTIAL HOUSING AND PUBLIC SPACES WITHOUT MAINTENANCE. IN GENERAL, THE CONSTRUCTION OF PUBLIC USE BUILDINGS IS NOT TAKEN INTO ACCOUNT AND THE FUNCTION OF THESE IS CONCENTRATED IN SIMPLE OUTDOOR SPACES THAT ARE SPONTANEOUSLY USED BY THE POPULATION.

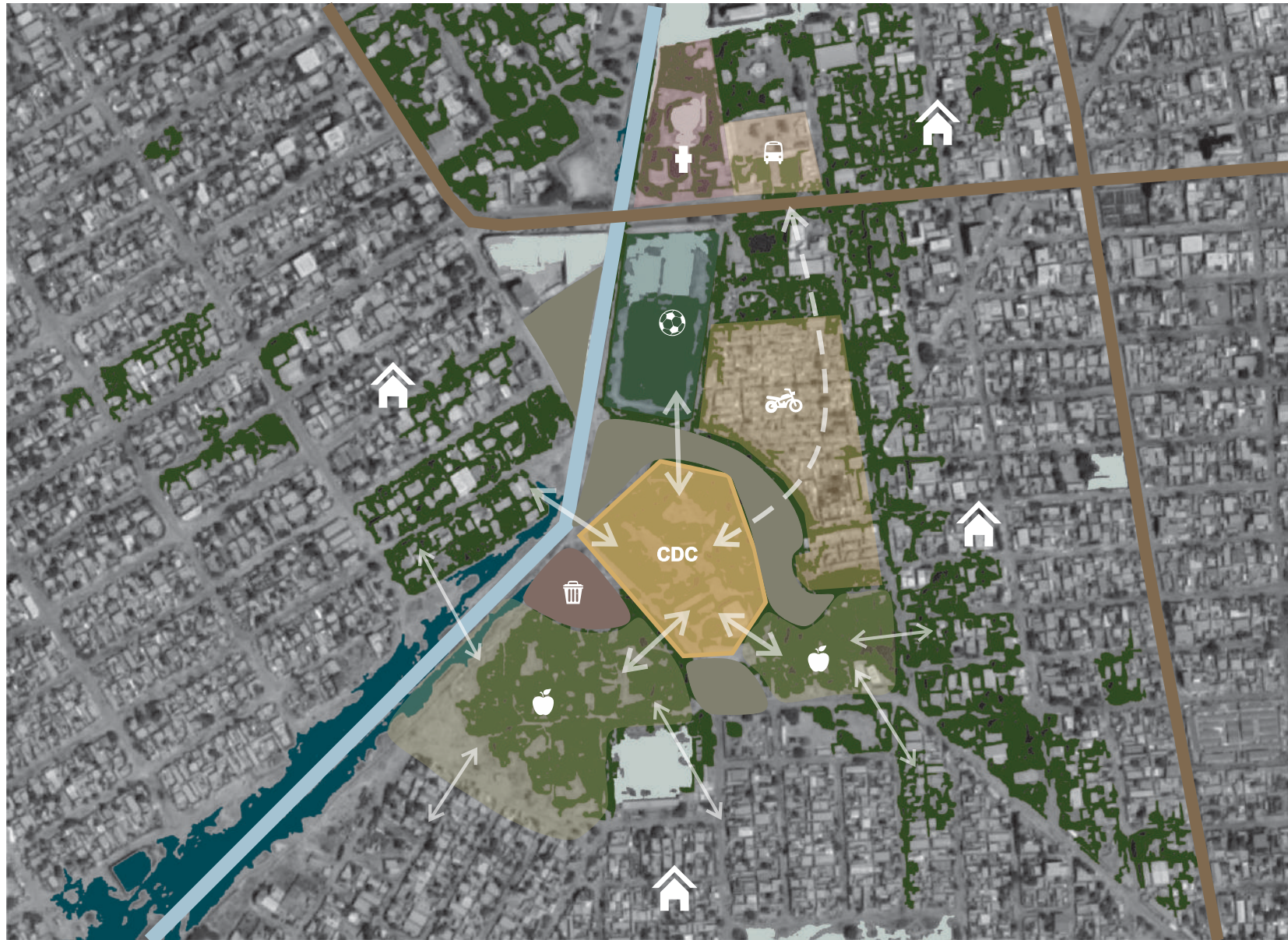


FUNCTIONAL REVIEW

- THEATRO POPULAIRE
- RESIDENTIAL DENSITY HALF
- TEACHING INSTITUTE
- PUBLIC GREEN SPACES
- SPORTS STADIUM
- CEMETERY
- MOSQUE
- SHRINE
- MAIN STREETS



IMMEDIATE URBAN CONTEXT



CDC

BARRIERS



DUMP



STREAM



MOTORCYCLE MARKET

EQUIPMENT



BUS STATION



CHURCH



STADIUM



HOUSEHOLDS



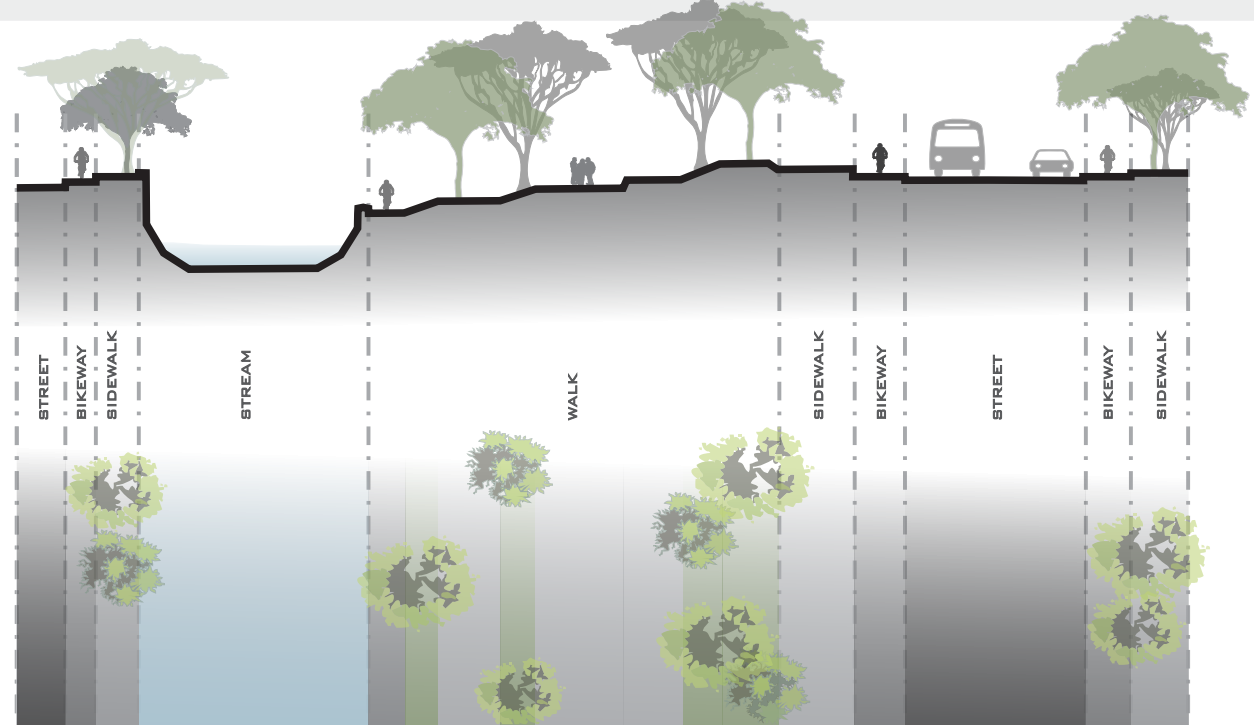
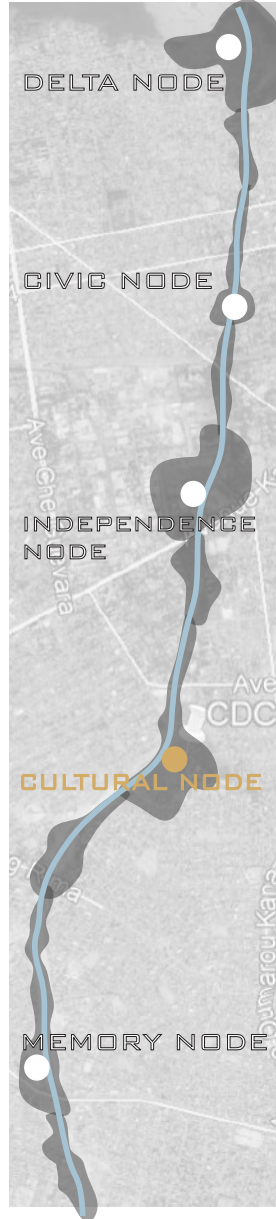
ORCHARD

URBAN CONTEXT



URBAN PROPOSAL ARTISANAL WALK

AS THE CDC IS OUR TRIGGERING PROJECT, WE PLAN TO REVITALIZE AND CONDITION THE IMMEDIATE SECTOR OF THE CANAL, WHICH IS CURRENTLY A BARRIER IN THE CITY, AND COULD BE A PUBLIC RECREATION SECTOR, WHERE A CONSTANT FAIR OF LOCAL CRAFTS CAN BE EXPANDED, THROUGH WHICH IT CAN TRANSIT IN A PEDESTRIAN WAY AND AT THE SAME TIME CARRY OUT OTHER DIFFERENT ACTIVITIES, DEPENDING ON ITS IMMEDIATE ENVIRONMENT, ACHIEVING A CONNECTION BETWEEN THE DIFFERENT PROPOSED NODES.



IMMEDIATE ENVIRONMENT PROPOSAL

COMMUNITY, CULTURAL, FARM AND SPORTS ACTIVITIES ARE CLOSELY RELATED, SO WE CONSIDER IT IMPORTANT TO CREATE SPACES THAT INTERRELATE THEM TO STRENGTHEN THE SENSE OF COMMUNITY AND BELONGING IN THE AREA.



ASSIGNED LAND
+
IMMEDIATE ENVIRONMENT



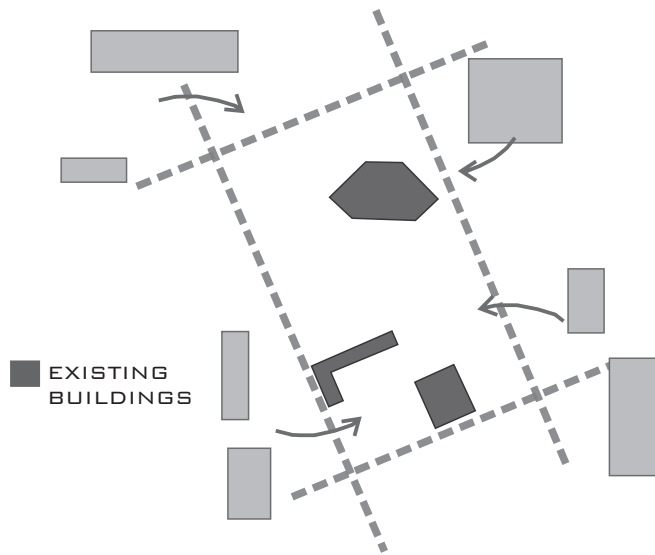
INTERVENTION
LAND



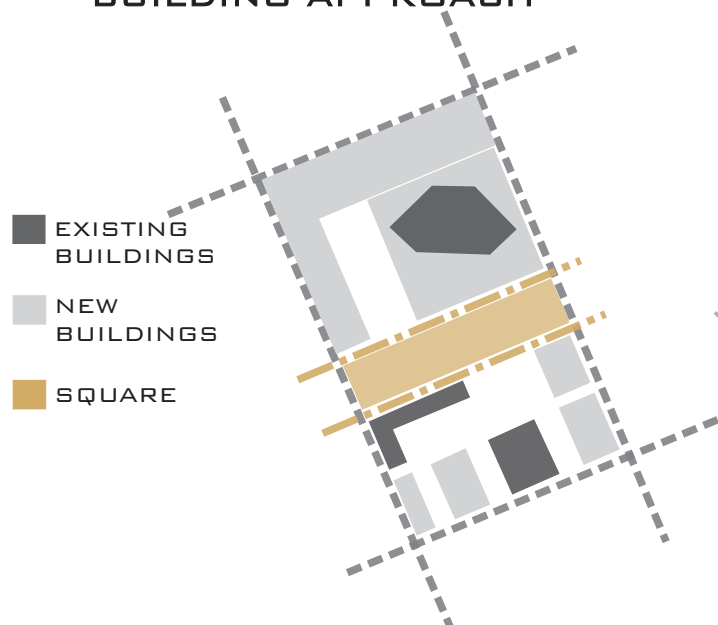
WE KEEP EXISTING
BUILDINGS AND SEPARATE
ACTIVITIES



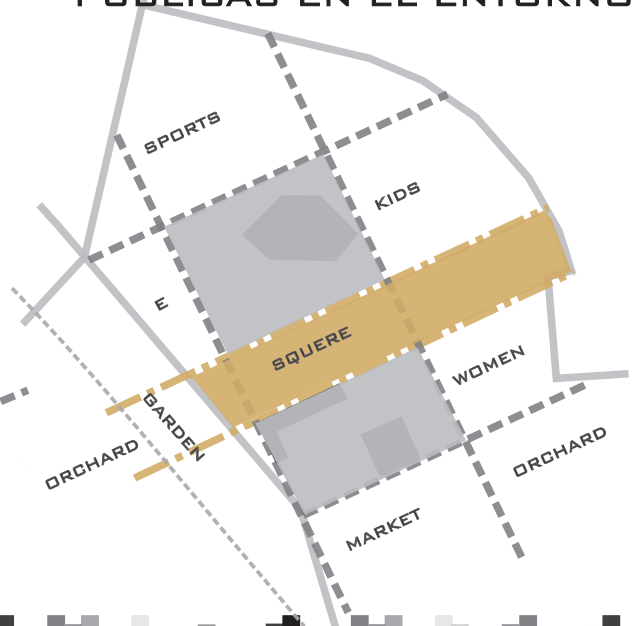
ADHESION OF NEW
VOLUMES



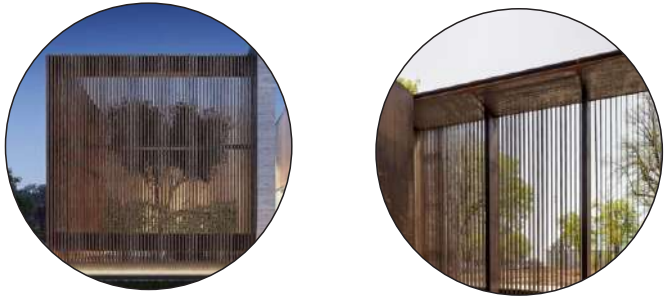
BUILDING APPROACH



PLANTEO DE ACTIVIDADES
PUBLICAS EN EL ENTORNO



LIGHTWEIGHT VIRTUAL COATING WITH WOOD



HºAº SUPPORTING STRUCTURE AND ENCLOSURE WITH EARTH WALL



LIGHTWEIGHT COVER RESOLVED IN METAL



GENERATE WATER RESERVES, CISTERN AND A RECIRCULATION OF THE SAME FOR EVERYDAY USE



INCORPORATION OF CLIMATE RESISTANT VEGETATION

TREES



ACACIA



CEIBAS



KARITE



TAMARINDO



GAUCHO

SHRUBBERY AROMATIC AND FLORAL



ROMERO



SALVIA



LAVANDA



TAGETE LEMMONII



MEMORIA DESCRIPTIVA

WE PROPOSE TO GENERATE TWO SETS OF BUILDINGS LINKED THROUGH A PUBLIC AND OPEN SQUARE THAT OFFERS ACCESS TO THE COMPLEX. ONE OF THE BUILDINGS RISES FROM THE AMPHITHEATER AREA, TO WHICH WE PROPOSED DIFFERENT ACCESSSES, ONE AT LEVEL 0,0, ANOTHER AT THE INTERMEDIATE LEVEL, AND THE LAST ONE ON TOP WHICH ENABLES A TOTAL VIEW OF THE COMPLEX.

ON THE OTHER SIDE OF THE PEDESTRIAN -PLAZA, WE REDIRECTED THE ENTRY TO THE LARGE STUDIO AND LINKED THAT AREA WITH A SPACE THAT ALLOWS THE EVENTUAL LOCATION OF TEMPORARY POSTS.

IN THE MIDDLE OF THIS, WE CREATE A SEMI PUBLIC FIELD NEAR THE CLASSROOMS OF WORKSHOPS, WHICH ALLOWS THE OVERFLOW OF THE CANTINA AND SERVICES AREA.

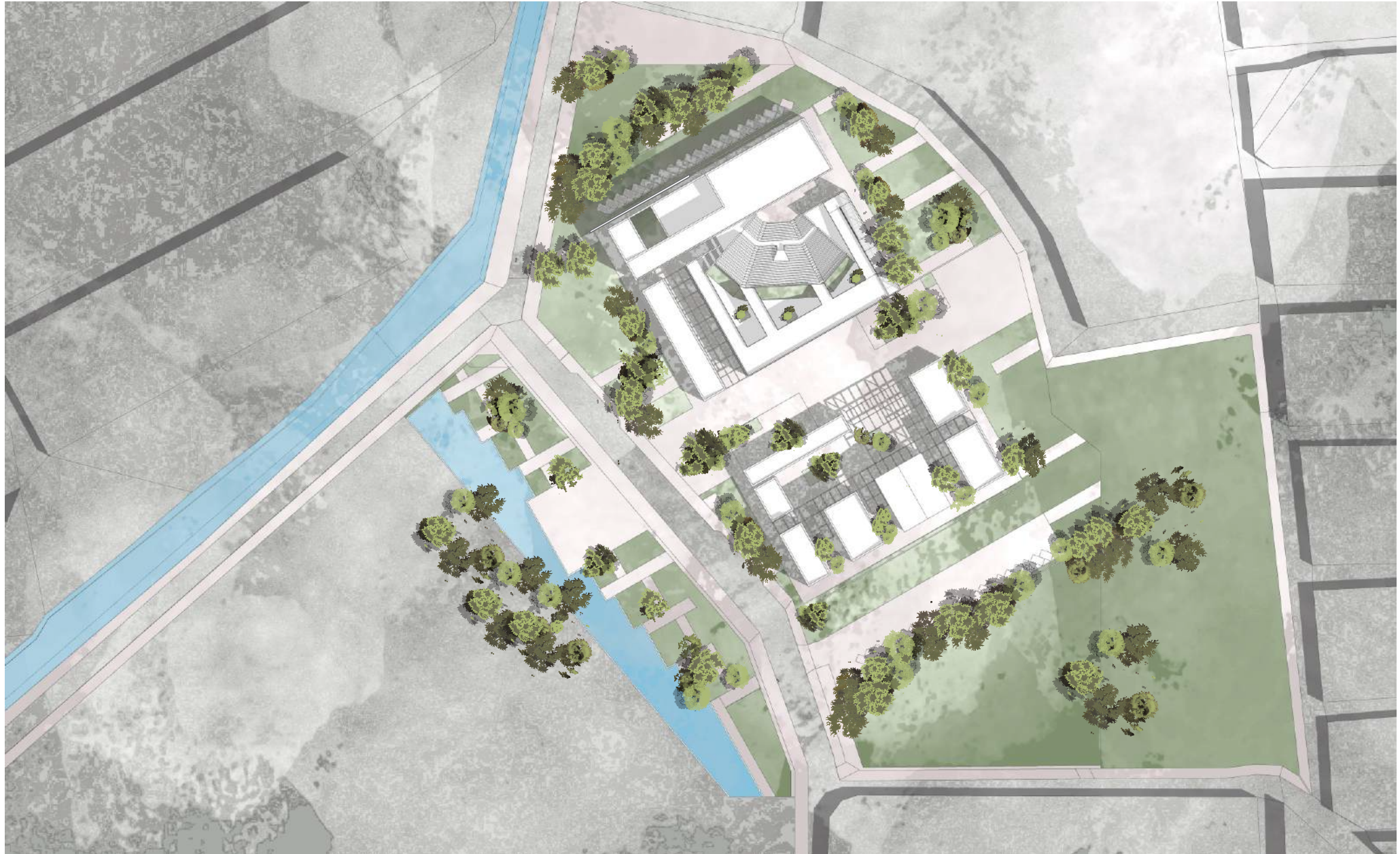
FROM THESE TWO OPPOSITE SETS WE PROPOSE TO EXPRESS A DUALITY ALSO IN ITS MATERIALIZATION, PRESENTING VIRTUAL VOLUMES THAT CONNECT WITH THE ACTIVITIES THAT THE HEAVY VOLUMES ENCLOSES, CLEARLY MARKING THE INTENTION OF CLOSING THE COMPLEX.

IN THIS WAY THE MATERIALS ARE CONCEIVED AS ANTAGONIC PROTAGONISTS. ON ONE SIDE THE MASS, THE HEAVY, THE GRAVITY IS REPRESENTED BY THE EARTH WALLS WHILE THE ETHERIC, LIGHT AND VIRTUAL IS CONCEIVED THROUGH THE USE OF THE WOOD.

THE TRANSPARENCY OF THE CENTRAL VOLUME IS USED AS A CONTINUITY OPERATOR OF THE CENTRAL PLAZA-PEDESTRIAN, ENABLING THE REPRESENTATION OF RELATIONSHIPS BETWEEN THE DIFFERENT PARTS AND THE WHOLE, INTERIOR AND EXTERIOR, AT THE SAME TIME OPPOSING A BARRIER AND CONCEIVING TWO DIFFERENT SCENARIOS.

THE FACADE OF THIS VOLUME PROPOSES A DOUBLE MESSAGE, IT INVITES AT THE SAME TIME THAT IT ALLOWS THE LOOK OF THE PASSERS-BY THROUGH THE THREE DIMENSIONS OF THE INTERIOR SPACE.

ARCHITECTONIC APPROACH



SITE PLAN



ARCHITECTONIC APPROACH



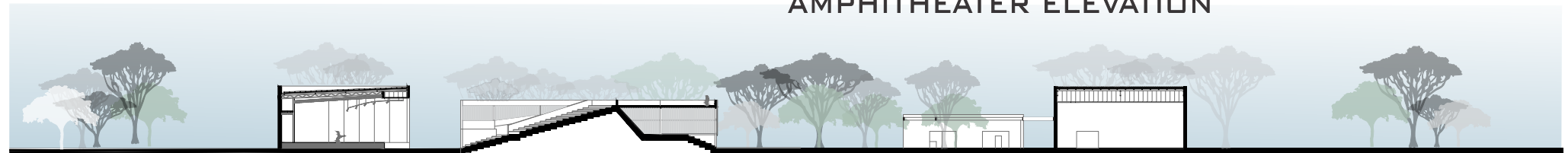
WEST ELEVATION



EAST ELEVATION



AMPHITHEATER ELEVATION



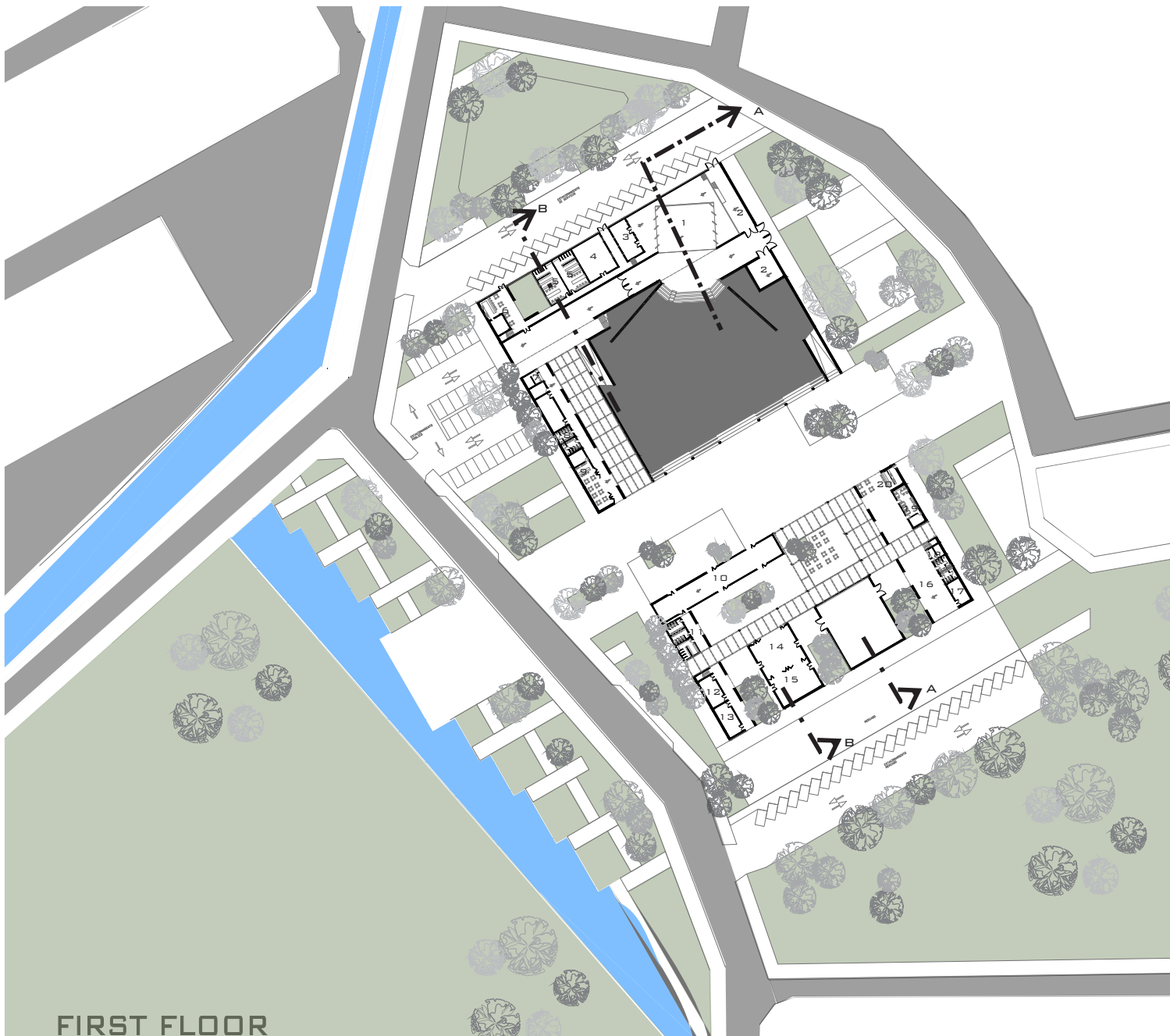
SECTIONAL ELEVATION AA



SECTIONAL ELEVATION BB



ARCHITECTONIC APPROACH



FIRST FLOOR

REFERENCES:

SHOW AREA

- 1- STAGE/BACKSTAGE
- 2- ASSEMBLY AND DEPOSIT WORKSHOP
- 3- SEWING ROOM
- 4- REHEARSAL ROOM
- 5- DRESSING ROOM WITH SANITARIES
- 6- DINING ROOM AND DEPOSIT
- 7- TICKET AND OFFICE
- 8- SANITARIES
- 9- RESTAURANT

LABO AREA

- 10- COWORKING SPACE
- 11- SANITARIES AND LOCKERS
- 12- MUSIC EDUCATIONAL WORKSHOP
- 13- PUPPET AND CIRCUS EDUCATIONAL WORKSHOP
- 14- DANCE EDUCATIONAL WORKSHOP
- 15- THEATER EDUCATIONAL WORKSHOP
- 16- TEMPORARY TRADE SPACE
- 17- SANITARY AND DEPOSIT
- 18- TICKET
- 19- ADMINISTRATION
- 20- BUFFET

ARCHITECTONIC APPROACH

REFERENCES:

SHOW AREA

- 21- TECHNICAL CABIN, WORKSHOP AND DEPOSIT
- 22- OFFICE
- 23- MEETING ROOM
- 24- ATRIO, EXHIBITION SPACE

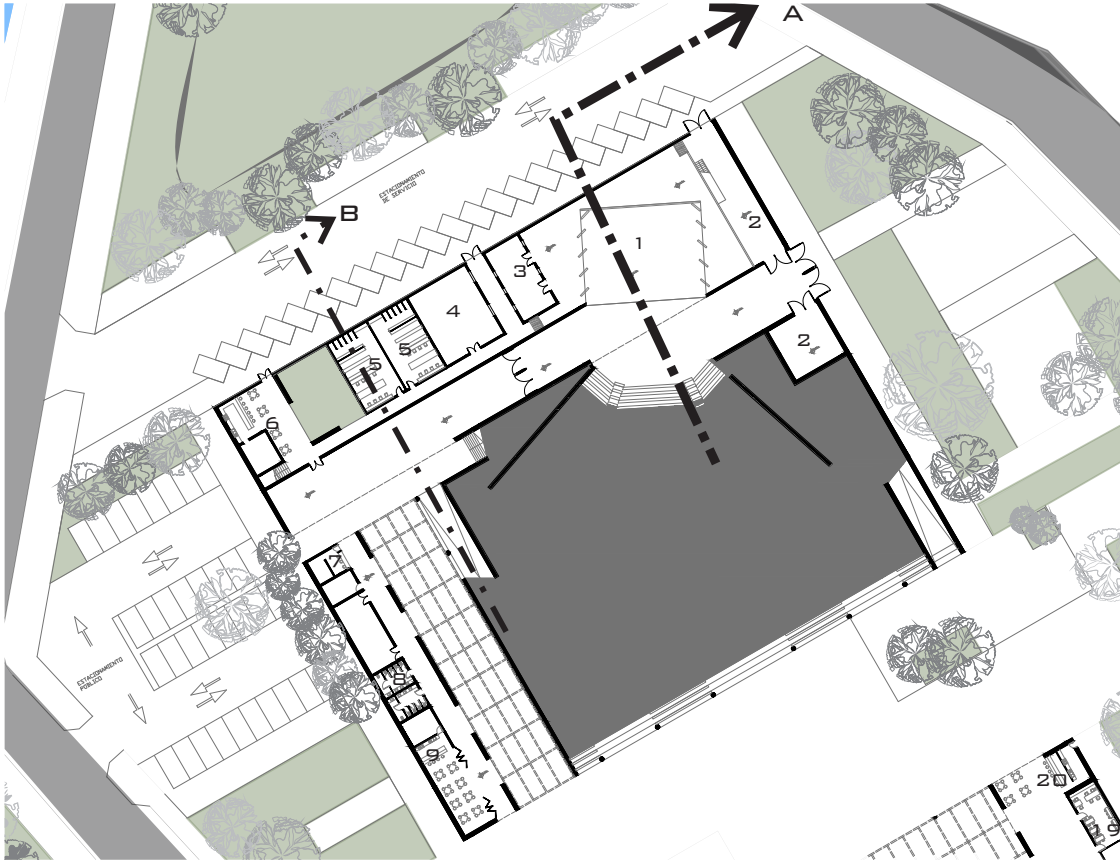
LABO AREA

- 25- PHOTO STUDIO
- 26- VIDEO EDITING STUDIO
- 27- RECORDING STUDIO
- 28- LIBRARY
- 29- EDUCATIONAL CLASSROOMS, READING ROOM
- 30- OFFICE

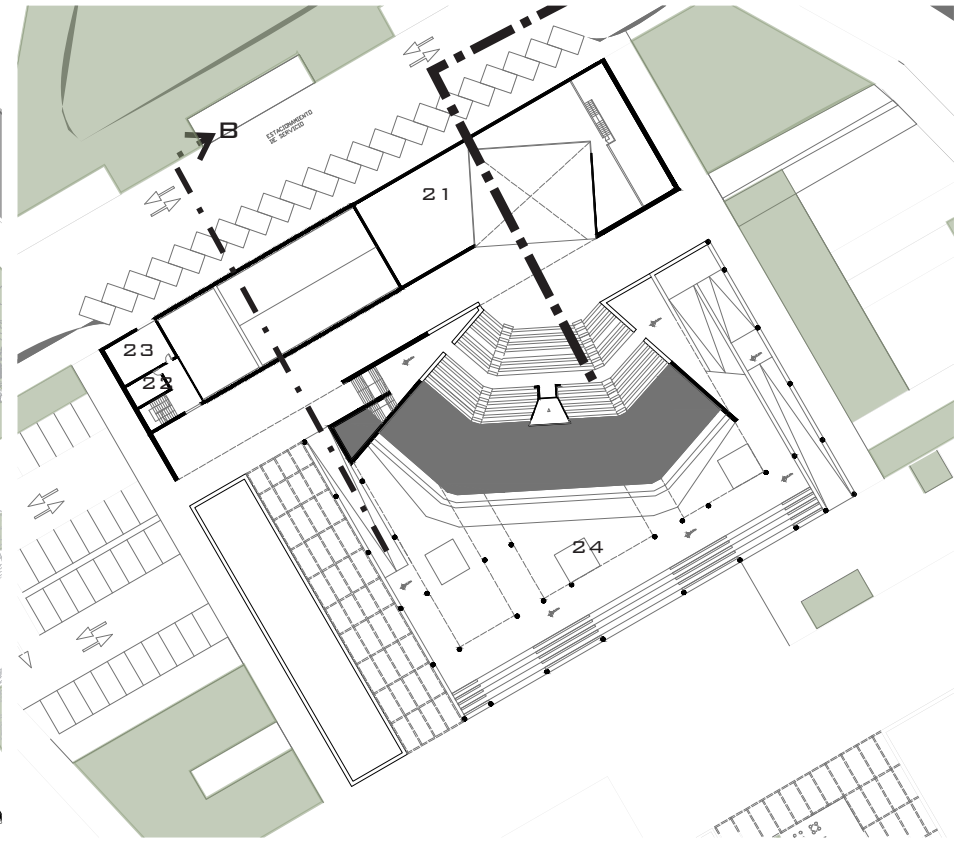


SECOND FLOOR

ARCHITECTONIC APPROACH



FIRST FLOOR



SECOND FLOOR

REFERENCES:

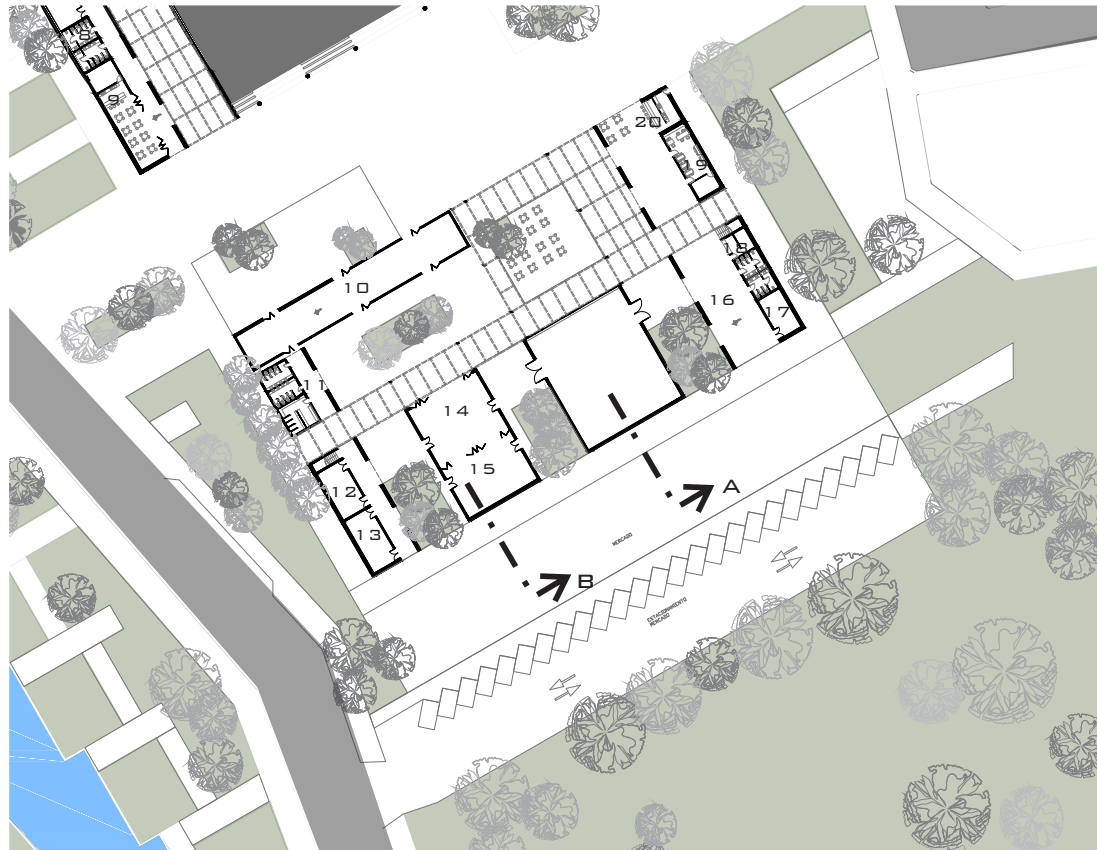
SHOW AREA

- 1- STAGE/BACKSTAGE
- 2- ASSEMBLY AND DEPOSIT WORKSHOP
- 3- SEWING ROOM
- 4- REHEARSAL ROOM

- 5- DRESSING ROOM WITH SANITARIES
- 6- DINING ROOM AND DEPOSIT
- 7- TICKET AND OFFICE
- 8- SANITARIES
- 9- RESTAURANT

- 21- TECHNICAL CABIN, WORKSHOP AND DEPOSIT
- 22- OFFICE
- 23- MEETING ROOM
- 24- ATRIO, EXHIBITION SPACE

ARCHITECTONIC APPROACH



FIRST FLOOR



SECOND FLOOR

REFERENCES:

LABO AREA

- 10- COWORKING SPACE
- 11- SANITARIES AND LOCKERS
- 12- MUSIC EDUCATIONAL WORKSHOP
- 13- PUPPET AND CIRCUS EDUCATIONAL WORKSHOP

- 14- DANCE EDUCATIONAL WORKSHOP
- 15- THEATER EDUCATIONAL WORKSHOP
- 16- TEMPORARY TRADE SPACE
- 17- SANITARY AND DEPOSIT
- 18- TICKET
- 19- ADMINISTRATION
- 20- BUFFET

- 21- TECHNICAL CABIN, WORKSHOP AND DEPOSIT
- 22- OFFICE
- 23- MEETING ROOM
- 24- ATRIO, EXHIBITION SPACE

