



**THEATRE DESIRE BONOGO**



TEATRE DESIRE BONOGO  
AFRICA  
BURKINA FASSO-UAGADUGU





# NOTE

ART, LOVE, DANCE, JOY, PASSION, WERE SOME OF THE WORDS THAT INSPIRED THIS PROJECT, IT WAS LOCATED IN AFRICA, LAND OF MUSIC AND DANCE. DANCE IN THIS COUNTRY IS ROOTED IN ITS ROOTS, IT EXPRESSES EMOTION, LOVE, JOY, EUPHORIA, AND EVEN SADNESS, THEY ARE CAPABLE OF DANCING CRYING. SEE THEM DANCE, BRISTLES THE SKIN, EXCITES, CAN BE NOTICED HIS PASSION, HIS ART, HIS CULTURE. DUE TO THIS FOR THE REHABILITATION OF THE DESIRE BONOGO THEATER WAS PLANNED PRIORITIZE THESE QUALITIES AND GENERATE SPACES FOR CREATION AND THE DISCOVERY THAT ALLOW THEM DEVELOP YOUR ART.

ARCHITECTURE WITH EARTH, THE DEMANDS OF A WARM CLIMATE, AND FLOODS THAT OFTEN OCCUR

IN THE AREA, TOO WERE AN IMPORTANT ASPECT IN CREATING OF THE PROJECT.

THE SET ALREADY HAD THE EXISTENCE OF SOME BUILDINGS SUCH AS OF THE CDC AND THE AMPHITHEATER TO WHICH ADD TWO OTHER NEW ONES DESIGNED FOR THIS PROJECT, THEY ARE LOCATED IN THE TERRAIN IN PARALLEL CONTAINING TO THE AMPHITHEATER BETWEEN THESE AND ORIENTED THE LARGE PARK IN FRONT OF IT. NEW SQUARES ARE CREATED, CONTAINING FUNCTIONS LIKE THAT OF THE AMPHITHEATER, WHICH ACTS AS FOYER OUTDOORS, THE MAIN SQUARE, WHICH CONNECTS WITH THE PARK AND A THIRD PLAZA, THAT PROMOTES THE DEVELOPMENT OF THE ARTS..



# LOCATION

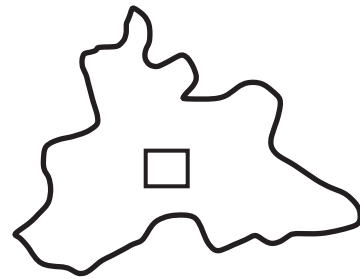
## AFRICA



## BURKINA FASO

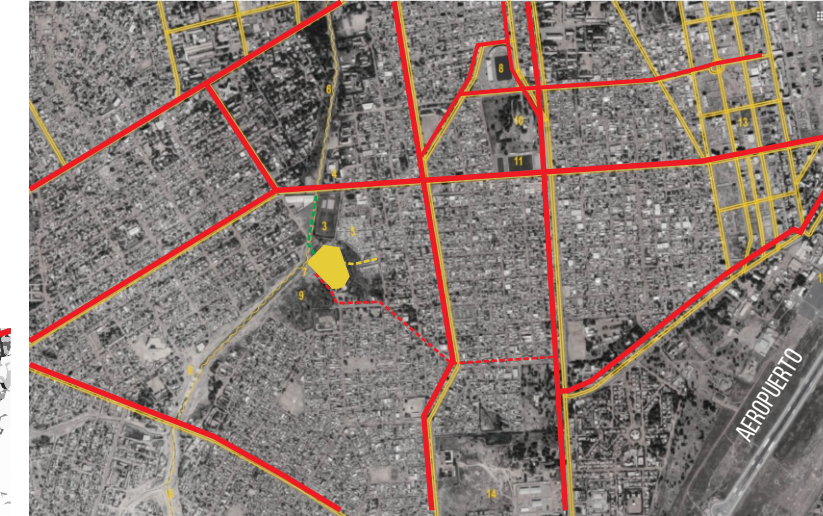


## OUAGADOUGOU

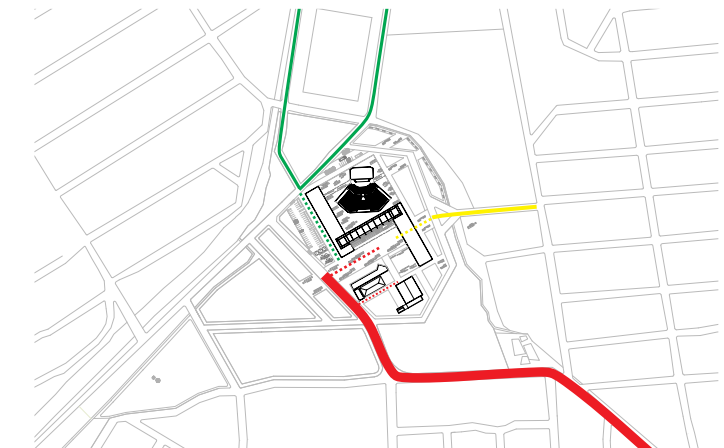


- ★ 1,629,950 INHABITANTS (2007 CENSUS)
- ★ CAPITAL AND MOST IMPORTANT CITY.
- ★ 95% OF THE POPULATION LIVES IN THE CITY

- ★ CLIMATE: SEMIARID
- ★ DRY (OCTOBER-MAY) TEMPERATURES UP TO 45 °
- ★ RAINY (END OF MAY-END OF SEPTEMBER)
- ★ FLOOD HAZARD

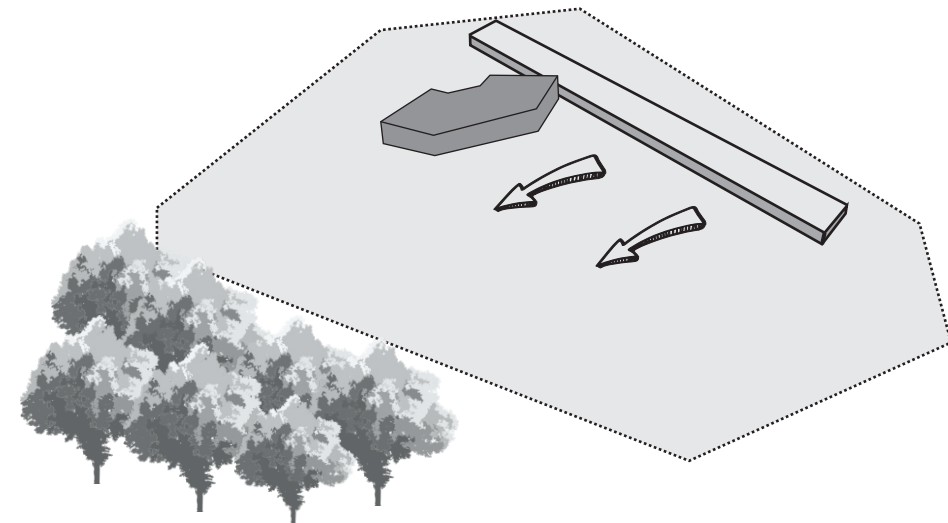


THE CITY OF OUAGADOUGOU HOW THE CAPITAL OF THE COUNTRY IS CONNECTED WITH OTHER GREAT CITIES OF THE REGION THROUGH ITS ROADS OF CIRCULATIONS PREDOMINANTS, WHICH INSIDE THE CITY BECOME AVENUES, CONSIDERING THIS AND THE MOST IMPORTANT BUILDINGS IN THE AREA WITH WHICH THE THEATER IT WILL BE LINKED, THREE DIFFERENT REVENUES ARE PLANNED TO THE ENTIRE WITH DIFFERENT HIERARCHY. THE RED WAY IS THE MAIN ONE AND IT IS THE ONE LINKED WITH THE AVENUES THAT LEAD TO BUILDINGS SUCH AS THE STATION, THE AIRPORT, THE TERMINAL, THE STADIUM, ETC. THE OTHER TWO (GREEN AND YELLOW) CONNECT IT WITH ITS IMMEDIATE ENVIRONMENT AND BUILDINGS CLOSE.

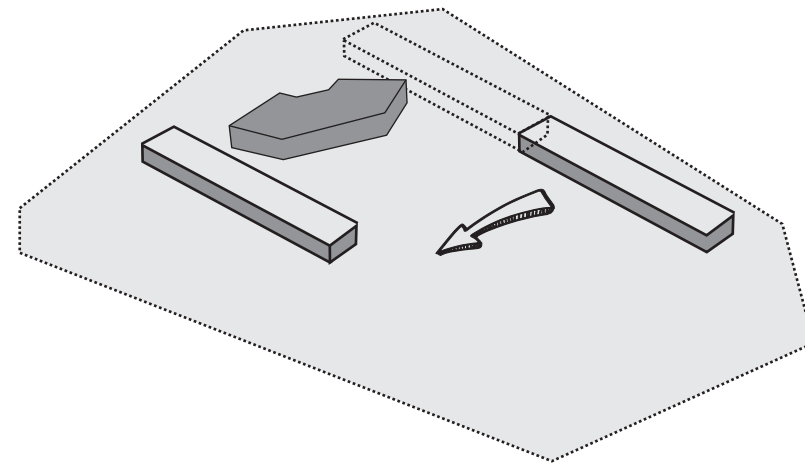




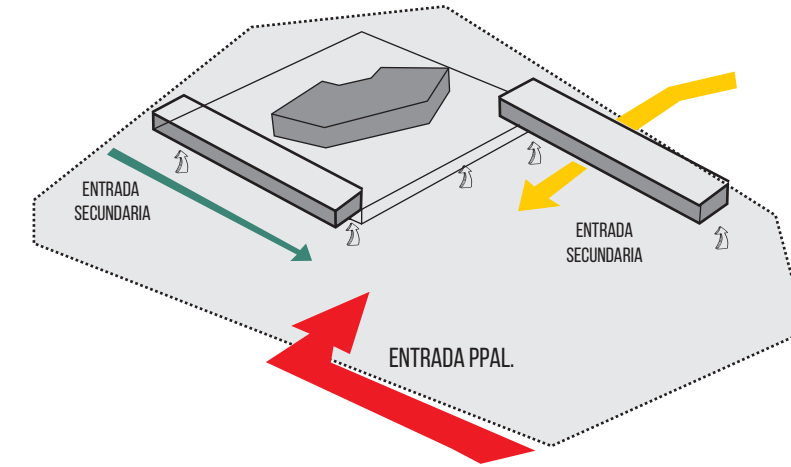
# SET



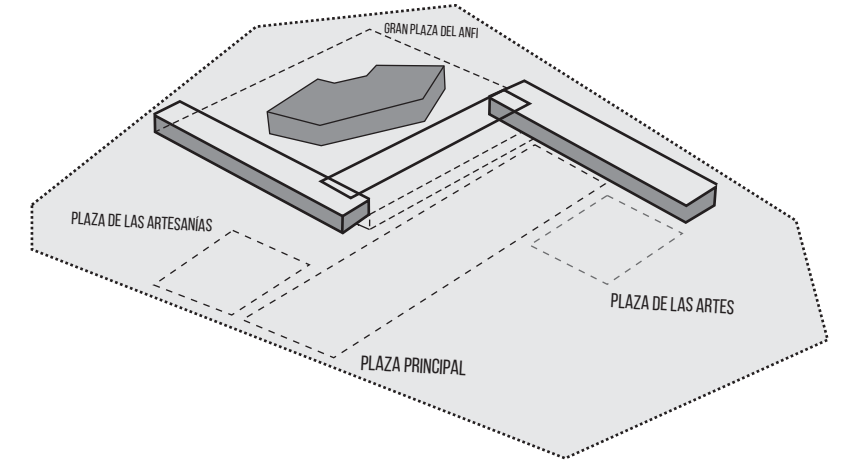
LINEAR BUILDING TANGENT TO THE AMPHITHEATER  
VISUAL CONNECTION TO THE PARK



DIVISION AND DISPLACEMENT OF THE BUILDING.  
AMPHITHEATER INCLUDED AMONG THEM.

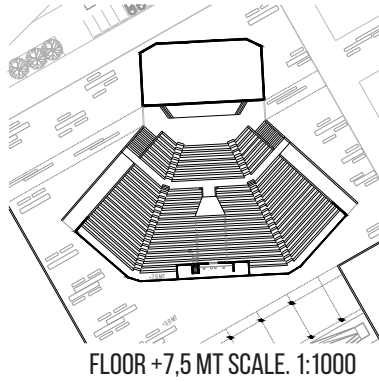
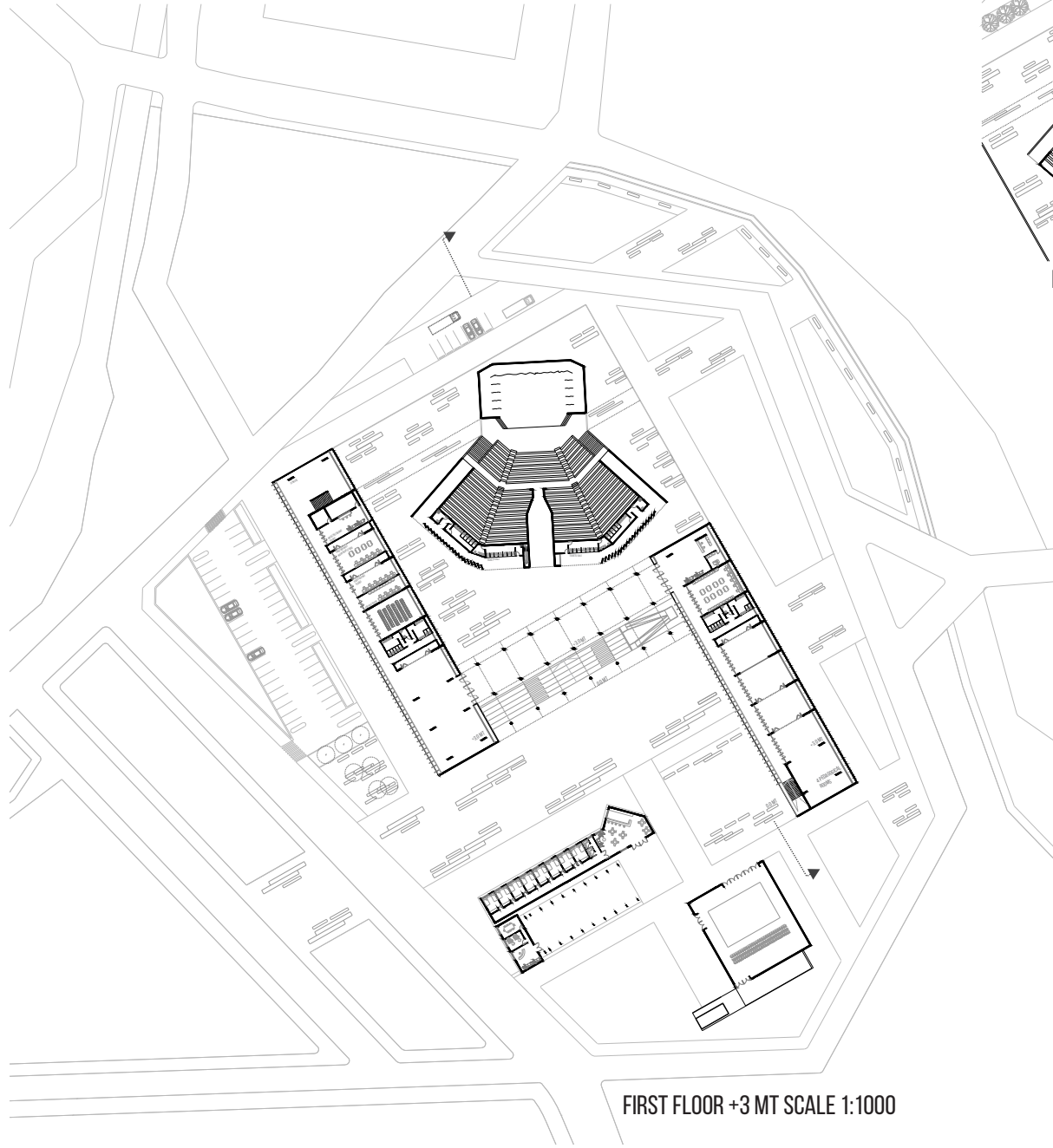
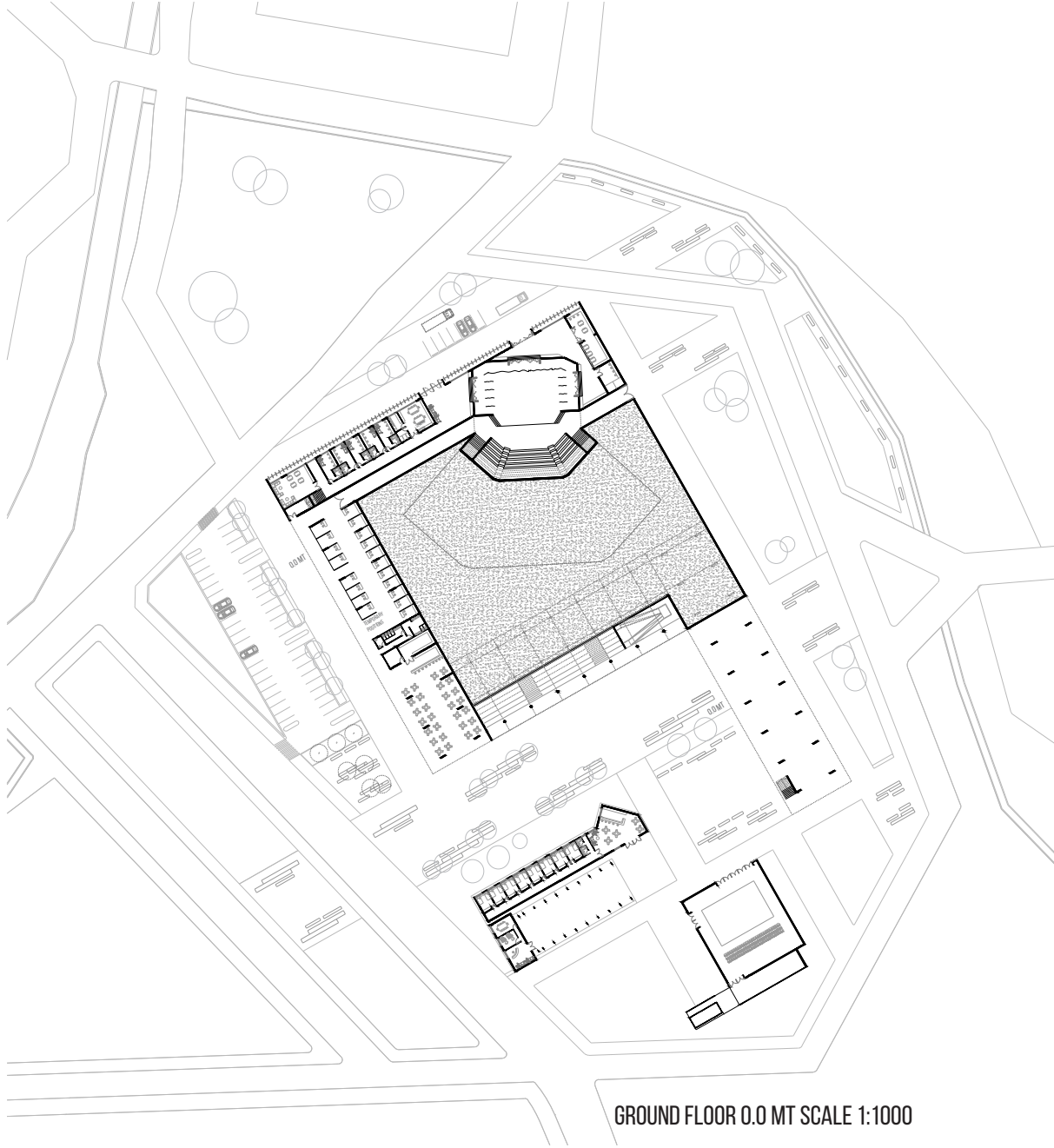
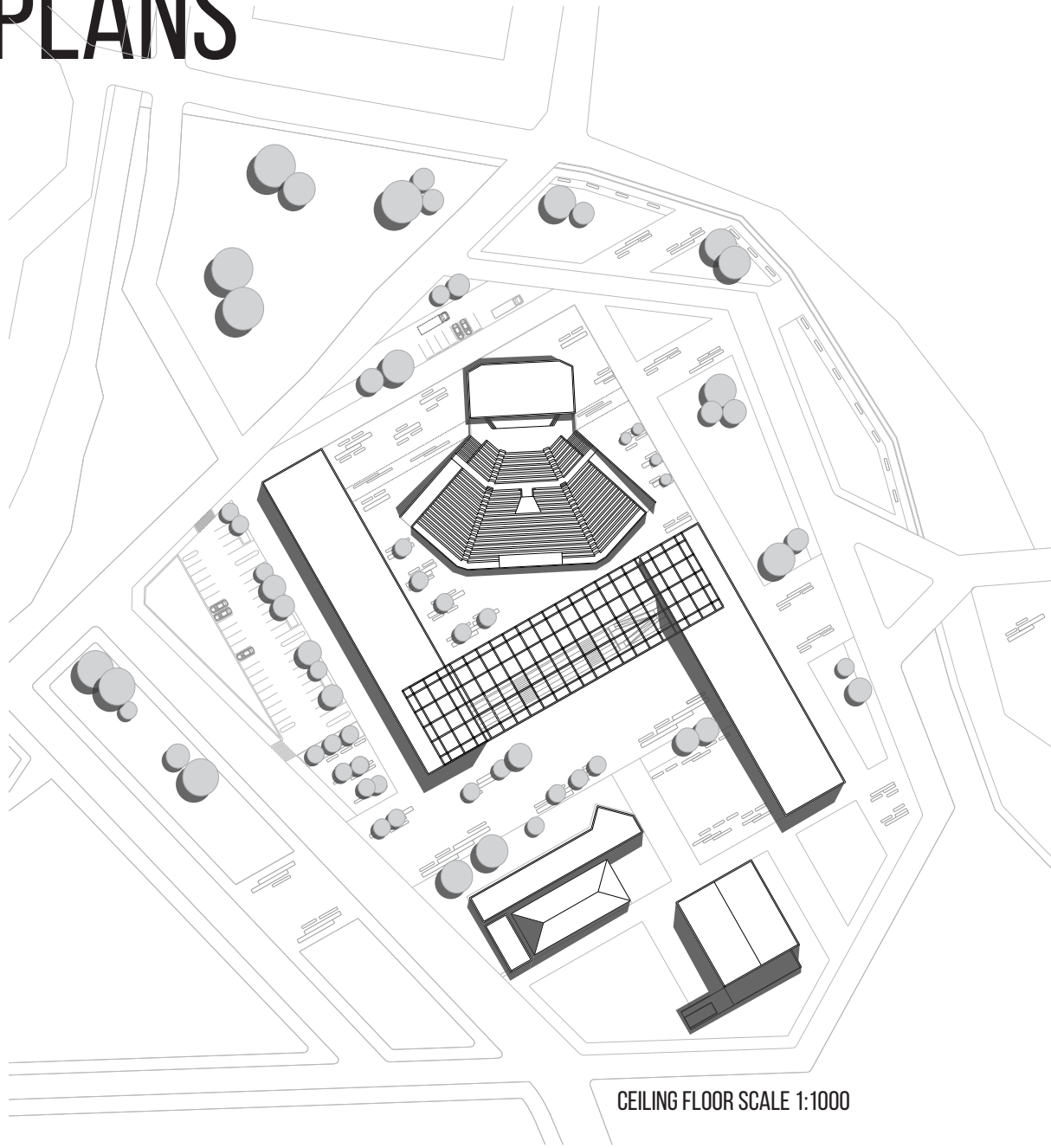


VERTICAL DISPLACEMENT OF BUILDINGS  
AND THE PLAZA CONTAINED AMONG THEM



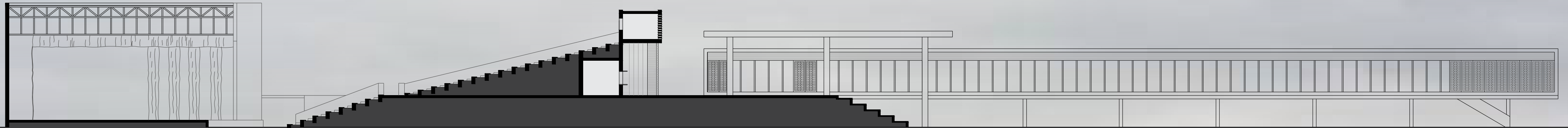
GREAT GATE OF ENTRY TO THE PLAZA DEL ANFI  
CREATION OF MULTIPLE PLACES WITH DIFFERENT PRIVACY AND FUNCTIONS

# PLANS



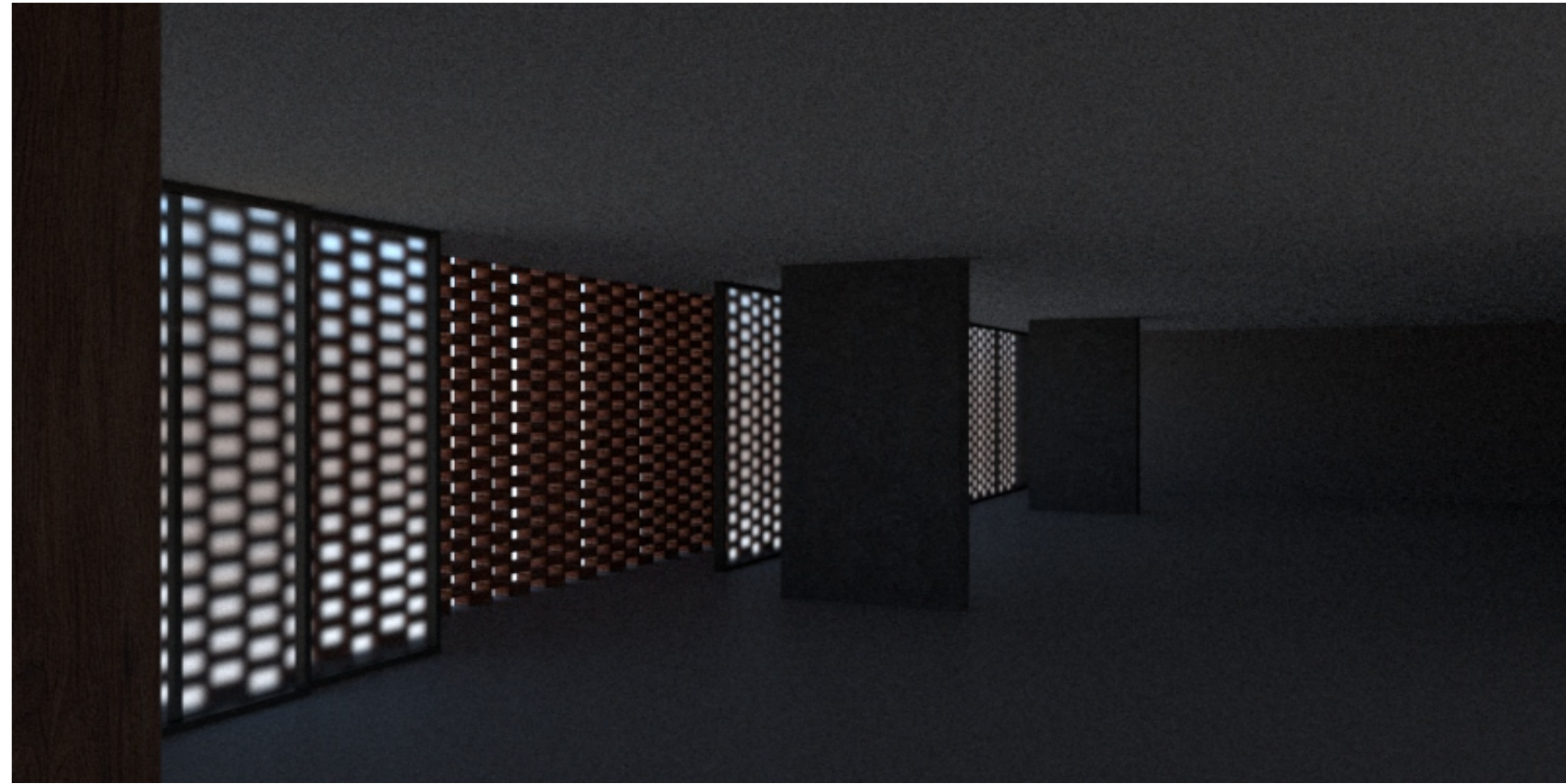


# CORTE

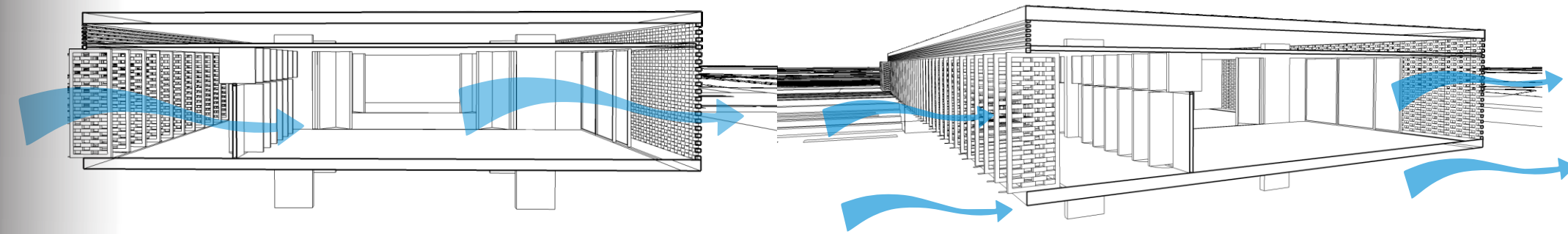


SCALE. 1:1000

# RENDERS



CONSTRUCTIVE RESOLUTION AGAINST HIGH TEMPERATURES, FIXED AND MOBILE BRICK SCREENS COVERING FRONTS EXPOSED TO DIRECT RADIATION, THE SAME ARE PREDISPOSED WITH SPACES TO ALLOW CROSS VENTILATION.



CROSS VENTILATION ON PREMISES  
FIXED AND MOBILE PERFORATED BRICK PARTITIONS

