

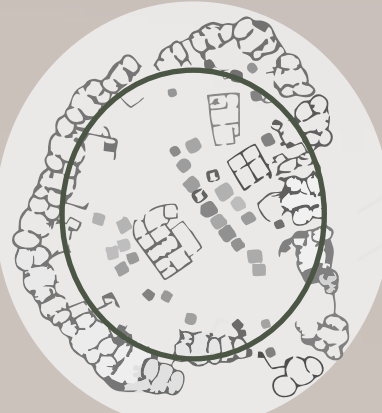


We intend to represent Burkina Faso's culture through a formal synthesis. From the study of different ethnic groups and their first settlements in Ouagadougou's area, we recognized circular organizations as the main reunions of the community. The circle represents **the sense of union, encounter and community life** of the locals. The new Theatre Populaire, together with the CDC and further activities that complement it, seeks to contain cultural and artistic activities, be a meeting point for everyone, and distinguish itself from the urban site to be a landmark.

CONCEPT

circle: formal synthesis

Burkina Faso's first settlements

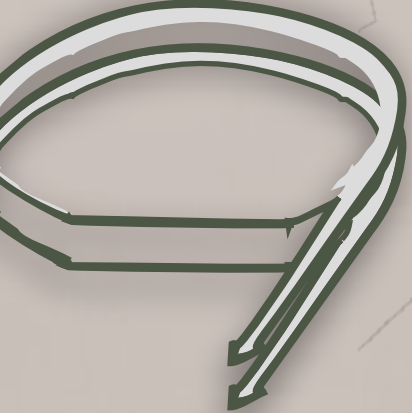


community life

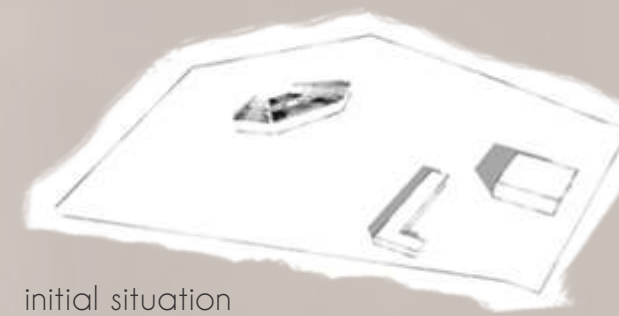
african culture



CENTRAL SPACE: meeting point



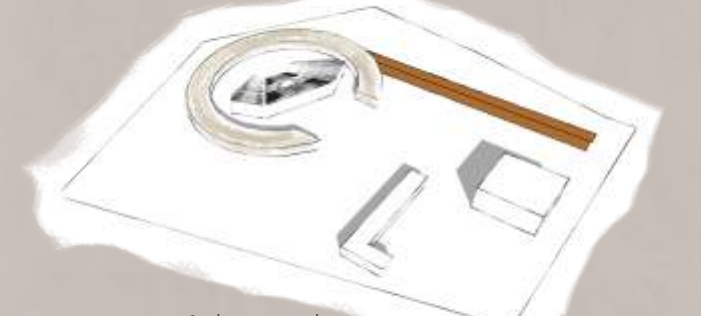
FORMAL GENESIS



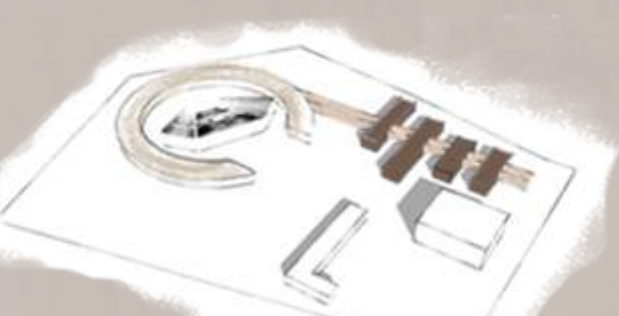
initial situation



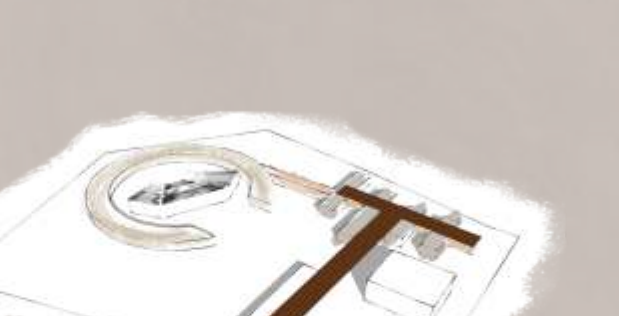
ring generation



tangent of the circle as an axis



volumes on the axis



galleries connect



access terrace

BIOCLIMATISM



interlocked bricks allowing natural lighting and ventilation



elevated roof allows ventilation / prevents extreme heat

MATERIALITY

LOCALS

COMPACTED EARTH

BAMBOO

STRUCTURAL

STEEL

CONCRETE



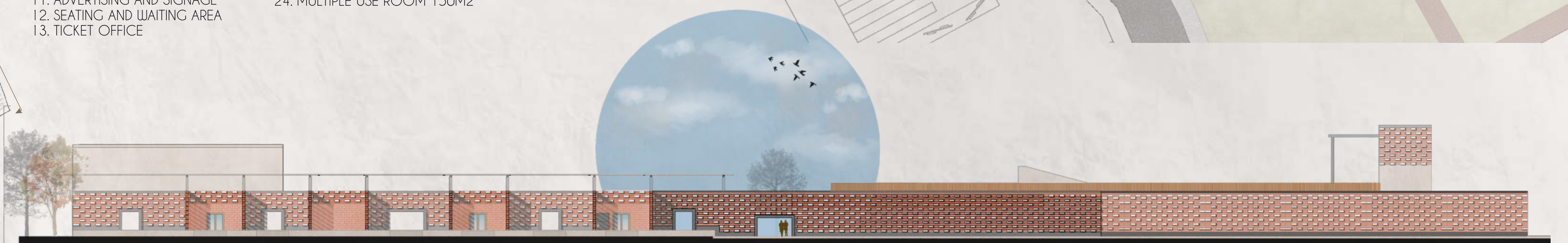
general plan

WORK + SHOW

1. PARKING
2. COSTUME WORKSHOP
3. REPAIR WORKSHOP
4. STAGE STORAGE
5. ROOM FOR TECHNICIANS
6. BACKSTAGE FOR PERFORMERS
7. STAGE
8. MEETING ROOM III / KITCHENNETTE
9. TEMPORARY STALLS
10. ACCESS THROUGH TERRACE
11. ADVERTISING AND SIGNAGE
12. SEATING AND WAITING AREA
13. TICKET OFFICE

LABO + CDC

14. BAR
15. MUSIC STUDIO
16. PHOTOGRAPHY STUDIO
17. RESTROOMS
18. MODULAR MEDIA ROOM
19. ARCHIVE
20. TEACHING SPACES
21. CO WORKING
22. VIDEO STUDIO
23. CDC GRAN STUDIO
24. MULTIPLE USE ROOM 150M2



east elevation



section B-B



longitudinal section A-A

