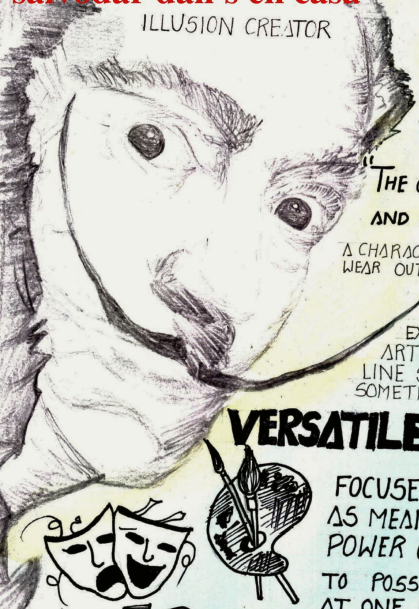


# SALVADOR DALI'S EN CASA

MD MEM202  
Introduction and Site analysis  
salvador dali's en casa  
ILLUSION CREATOR



"THE ONLY DIFFERENCE BETWEEN A MADMAN AND MYSELF IS THAT I AM NOT MAD."

A CHARACTER IN HIMSELF, DALI WAS KNOWN TO WEAR OUTRAGEOUS CLOTHING PIECES THAT MIMICKED HIS ART IN ITS CREATIVITY AND FEARLESS INCLINATION TO SELF-EXPRESSION. IT APPEARS HIS LIFE AND HIS ART MIMICKED ONE ANOTHER, WITH A THIN LINE SEPARATING ONE FROM THE OTHER AND SOMETIMES NOT AT ALL.

## VERSATILE PERSONALITY



FOCUSED ON THE UNCONSCIOUS AS MEANS TO UNLOCK THE POWER OF IMAGINATION. TO POSSES THE POWER TO LOOK AT ONE OBJECT AND SEE ANOTHER.

- PAINTER
- SCULPTOR
- ARTIST
- ACTOR
- PHOTOGRAPHER
- EXPERT IN SURREALISM

SATIRE  
MIRAGE



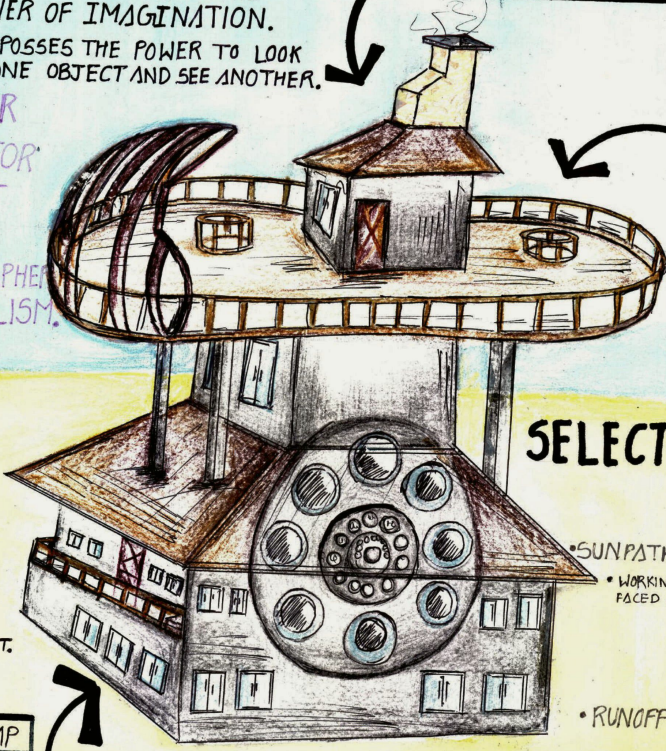
## LOCATION

NEAR ALBERT GURT MUNICIPAL STADIUM, RISE OF CASTLE ROAD, FIGUERES, SPAIN, 17600

DALI CREATED HIS FIRST PAINTING IN 1910; IT WAS ENTITLED LANDSCAPE NEAR FIGUERES. THE PAINTING IS QUITE EXQUISITE FOR A SMALL CHILD AND FEATURES MOUNTAINS BEYOND AN VANISHING POINT, AS WELL AS DIFFERENT BRUSH STROKES TO CREATE DEPTH AND MOVEMENT.

HE IS UPSET TO SEE THE COLD AND EMOTIONLESS STEEL AND GLASS BUILDING EVERYWHERE. THEREFORE, LOCATION IS SELECTED FIGUERES, SPAIN.

HIS REAL BIRTHPLACE AS WELL HE DESIGNED HIS OWN MUSEUM, WHICH ATTRACTS MANY PEOPLE, NEAR THE MUSEUM HIS NEW HOUSE.



REPLICATE THE FORM OF DALI'S SCULPTURE THAT IS LOBSTER TELEPHONE IN BUILDING. FOR THE RENOVATE THE WORLD AGAIN IS NECESSARY FOR HIM TO BECOME HIS OWN HOUSE ICONIC FOR THE WORLD. AS WELL HIS FAVOURITE SCULPTURE, HENCE HE ALSO LIKE HIS DESIGNED HOUSE.

## SITE ANALYSIS:

FIGUERES, SPAIN

• COOL AND DRY CLIMATE: SOMETIMES HOT.

MONTHS	MIN. TEMP.	MAX. TEMP.
JANUARY	-2°C TO 6°C	14°C TO 17°C
JULY	14°C TO 20°C	30°C TO 35°C
DECEMBER	2°C TO 8°C	13°C TO 16°C

• HUMIDITY: 40°C TO 96°C IS VARY.

RAINFALL: THE AVERAGE RAINFALL IN THE YEAR IS 602MM.

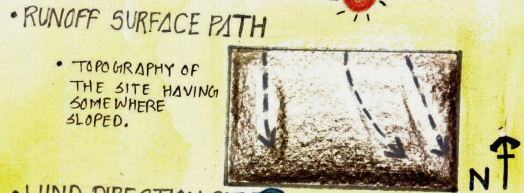
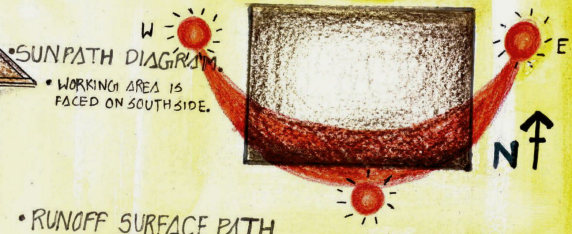
WINDSPEED: 6M/S (MONTHLY AVERAGE).

GROUND TEMP: MIN. TEMP → 8°C  
MAX. TEMP → 19°C.

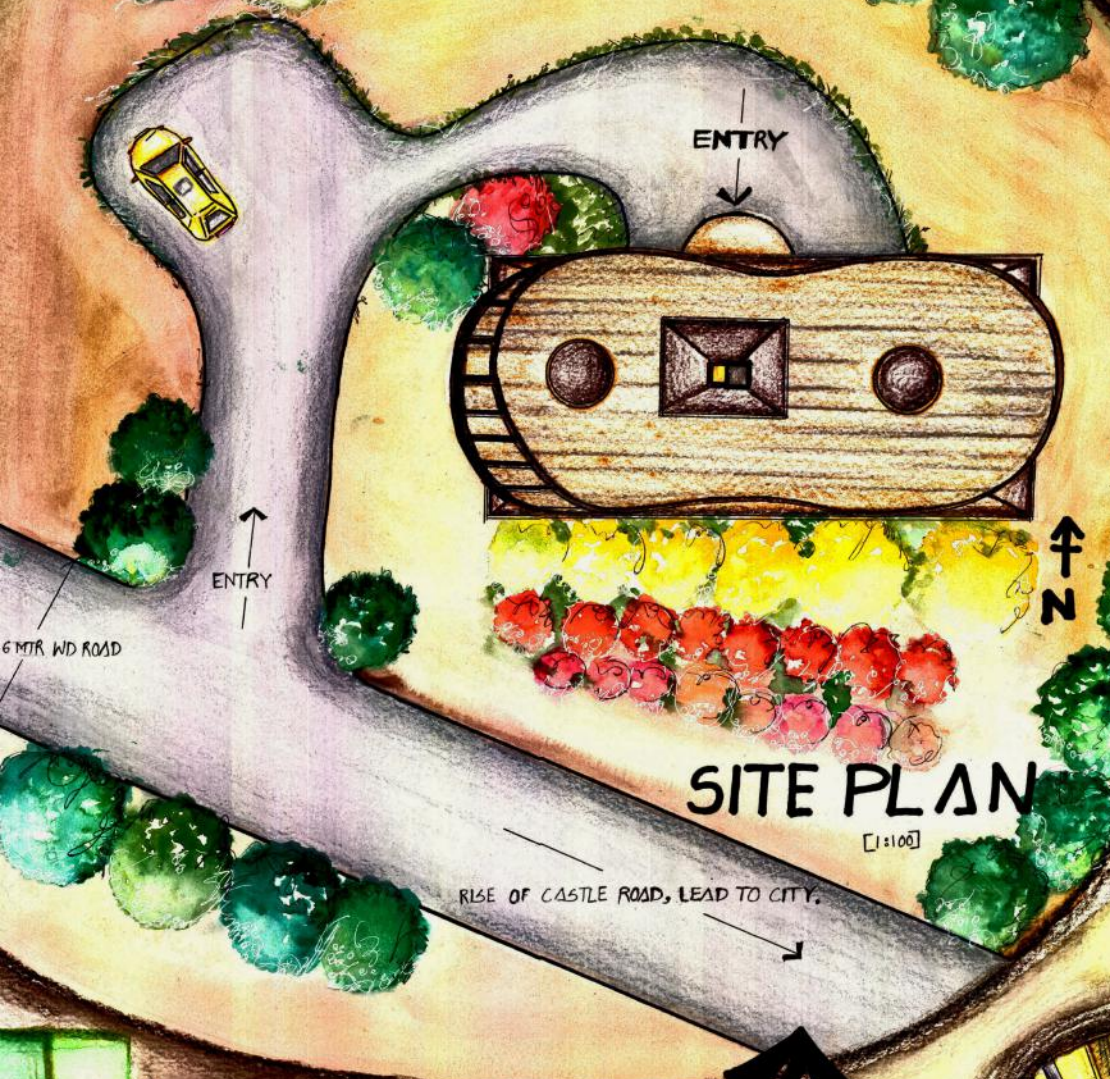
DALI CREATED THIS SCULPTURE FOR ENGLISH POET EDWARD JAMES, A LEADING COLLECTOR OF SURREALIST ART. LOBSTER TELEPHONE IS A SURREALIST OBJECT, CREATED IN 1936. IT IS ALSO KNOWN FOR APHRODISIAC TELEPHONE. IS FAMOUS SCULPTURE IN THE WORLD. THEREFORE I CHOOSE THIS FORM OF BUILDING. IS ATTRACTS MANY PEOPLE



## SELECTED SITE:



"I DON'T DO DRUGS. I AM DRUGS."



# SITE PLAN

[1:100]

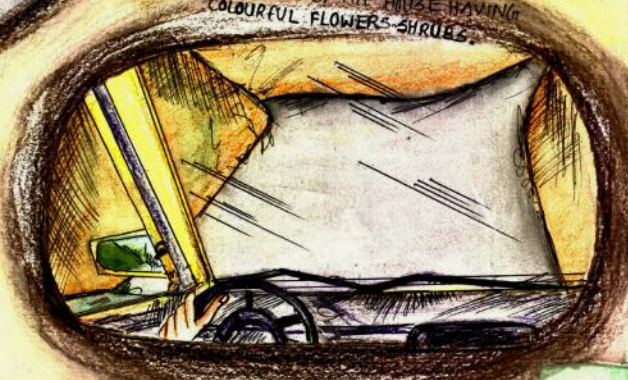


## • BALCONY VIEW

THIS VIEW GIVE THE PLESANT AS WELL AS SOOTHING FEELING.  
TOWARDS CITY BY SUFFERING FROM MOUNTAINS IS THE COROLLARY EFFECT.



• TOPOGRAPHY HAVING SLOPE TOWARDS THE ROAD.  
FRONT SIDE OF THE HOUSE HAVING COLOURFUL FLOWERS SHRUBS.

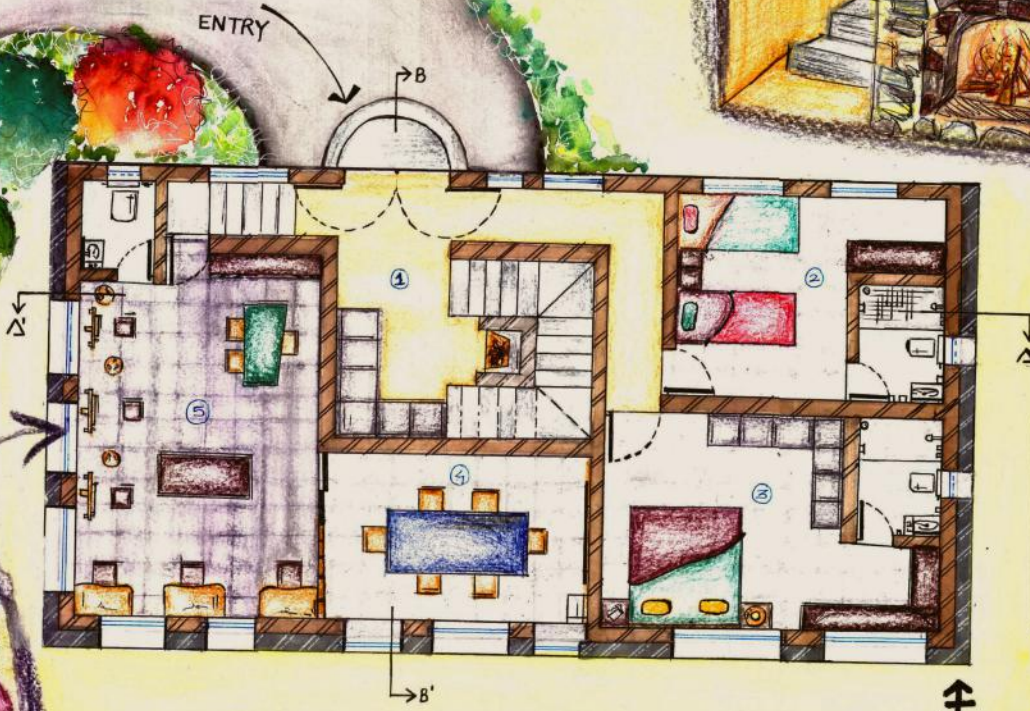


• DEPTH CREATING VIEW  
THE SELECTED ZONE HAVING ACCEPTABLE SHARPNESS TOWARDS THE ENTRANCE OR THE WAY, WILL APPEAR FIRST IN FOCUS. IS CONTROL THE DEPTH OF FIELD BY DISTANCE AND HEIGHT.  
THE AREA AROUND THE HOUSE CREATING SHARP MOVEMENTS FOR COMING PERSON.



## SITE AREA

MD\_MEM202  
 Plan and Actions  
 salvodar dali's en casa  
 1:50

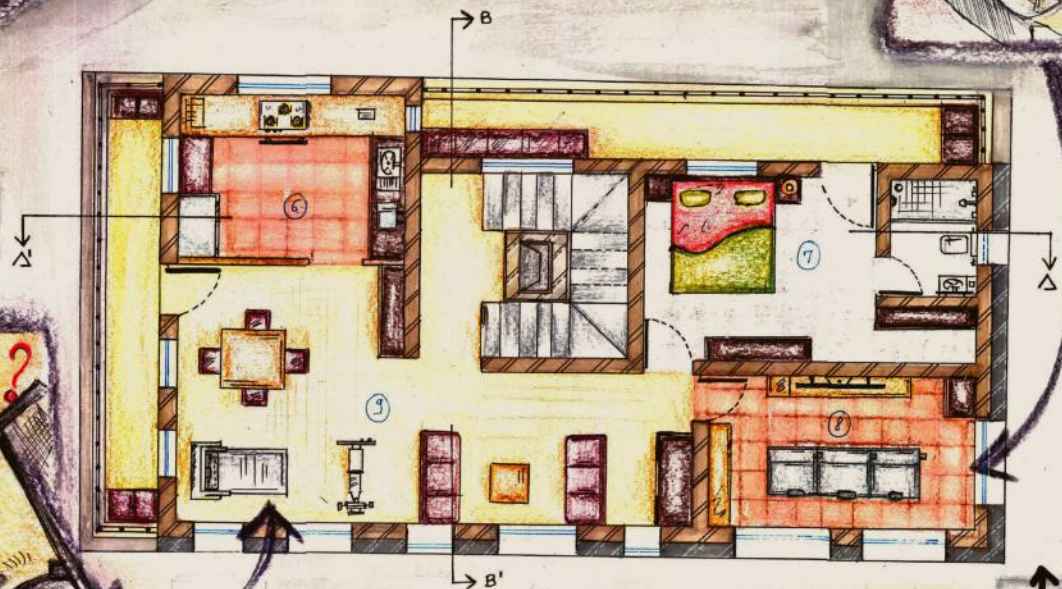
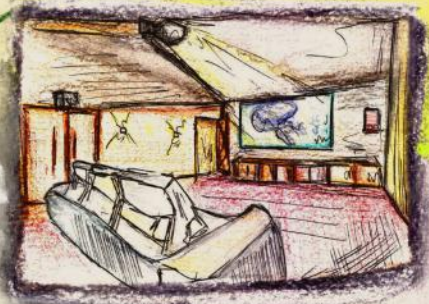


NO.	AREA
1.	FOYER
2.	GUEST ROOM - 0
3.	GUEST ROOM - 0
4.	MEETING AREA
5.	STUDIO



## GROUND FLOOR PLAN [1:50]

SALVODAR DALI HAS MARKED MINDS BECAUSE OF BOTH HIS PHYSICAL ASPECT, HIS APPEALING STATEMENTS AND BECAUSE OF HIS WORK GREAT ARTIST WHOSE PAINTINGS VERGE ON GENIUS, HE WAS A MAN OUT OF THE COMMON, KNOWN FOR HIS TASTE FOR THE BIZARRE, WHERE HE HAD UNCONSCIOUS MIND AND MOOD, HIS FAVOURITE COLORS ARE YELLOW (MAPLE) DULL COLOURS, BRIGHT COLORS.



NO.	AREA
6.	KITCHEN ROOM
7.	MASTER BEDROOM
8.	HOME THEATRE
9.	LIVING, DINING AREA



## FIRST FLOOR PLAN [1:50]

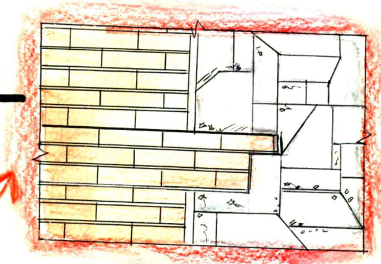
MD\_MEM202  
 Sections and Construction  
 salvador dali's en casa  
 1:50



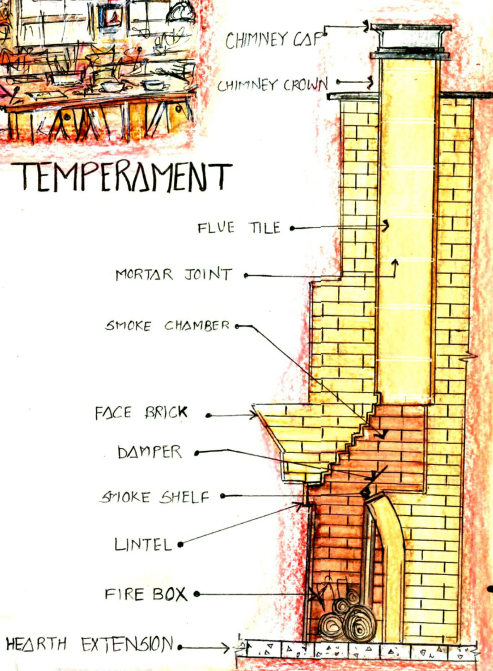
SECTION AA



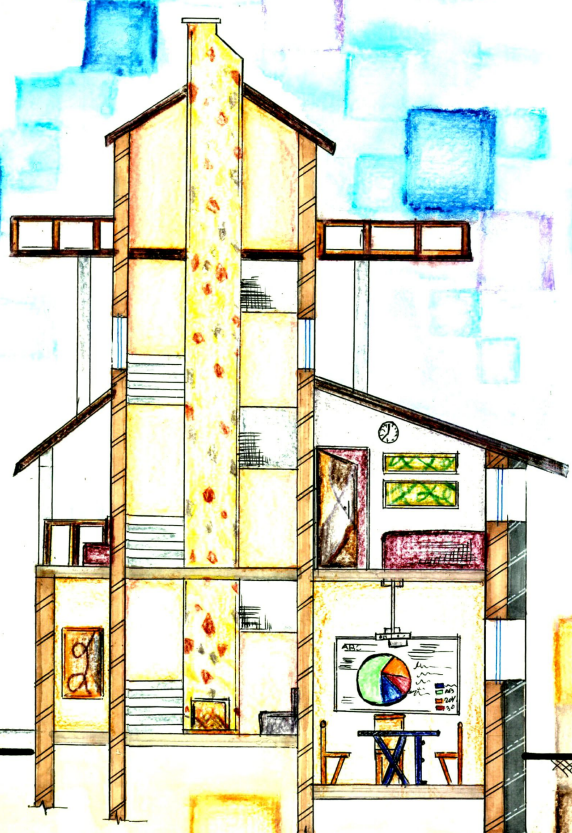
• TRANQUIL LOCUS



• STUDIO'S TEMPERAMENT



• FIREPLACE CHIMNEY

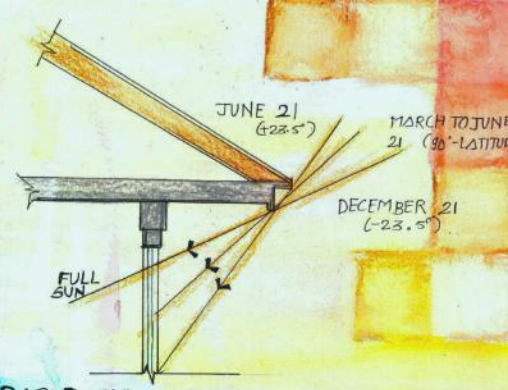


SECTION BB [1:50]



MD MEM202

Elevations and used material salvodar dali's en casa 1.50



• OPERABLE SUNSHADES.

• TYPICAL SOLAR HEAT GAIN COEFFICIENT = .521

• TYPICAL VISIBLE LIGHT TRANS = .57

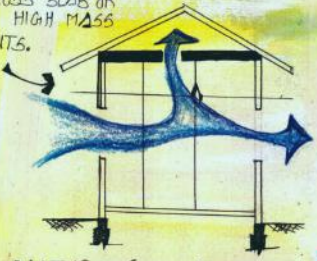
• TYPICAL CONDITION FACTOR (U) = .45

• DOUBLE PANE CLEAR WINDOW.

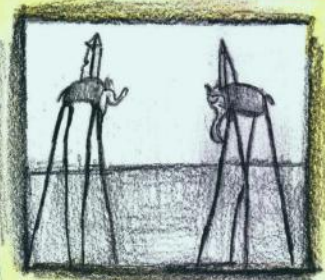
• HIGH PERFORMANCE GLAZING ON WEST, NORTH, AND EAST, BUT CLEAR ON SOUTH FOR MAXIMUM PASSIVE SOLAR GAIN.

### NORTHSIDE ELEVATION [1:50]

• COOL NIGHT AIR IS DRAWN IN ACROSS SLAB OR OTHER HIGH MASS ELEMENTS.



• NATURAL (CROSS) VENTILATION OR USE JUMP DUCT (STAIRCASE)



• DEACTION



• FEEL NATURALLY COOL ON HOT DAYS.



• HIGH MASS INTERIOR SURFACE.



• PERSISTANT

### EASTSIDE ELEVATION [1:50]