

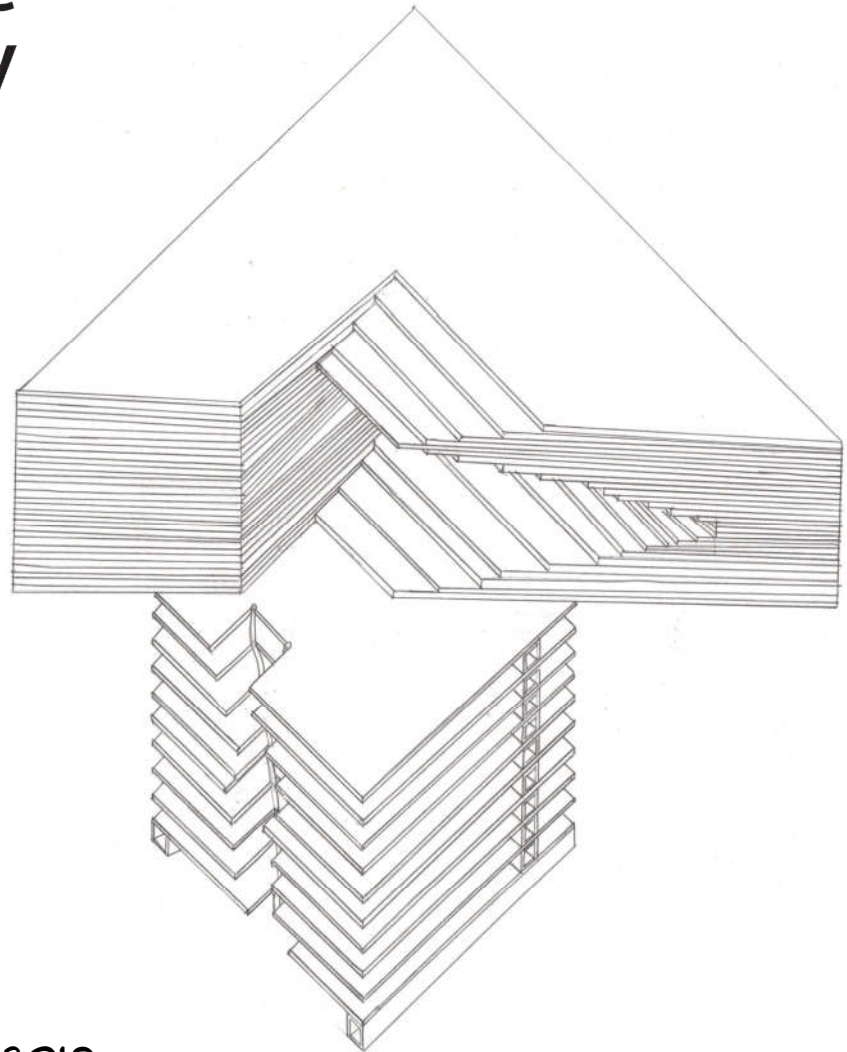


# PORTFOLIO – SEMESTER ONE

SUBJECT NAME: STUDIO DESIGN 1A  
SUBJECT CODE: ARCH 1111

NAME: TESARINA KATHRINE GOMME  
ID: 193921447

SEMESTER: ONE - SEPTEMBER/ OCTOBER 2019  
LECTURER: ANNA KAMELIA BINTI KAMARUDIN



# TABLE OF CONTENT

01 - GRID AND GEOMETRY

02 - PATTERN AND TEXTURE

03 - 80 CUBE

Ø1 - GRID AND GEOMETRY

## 01 - GRID AND GEOMETRY

THE AIM OF THIS PROJECT IS TO INTRODUCE A BASIC UNDERSTANDING OF BASIC DESIGN ELEMENTS AND PRINCIPLES. IT ALLOWS A STUDENT TO STUDY AND ANALYSE COMPLICATED DESIGN FORMS THROUGH SIMPLE GEOMETRICAL SHAPES.

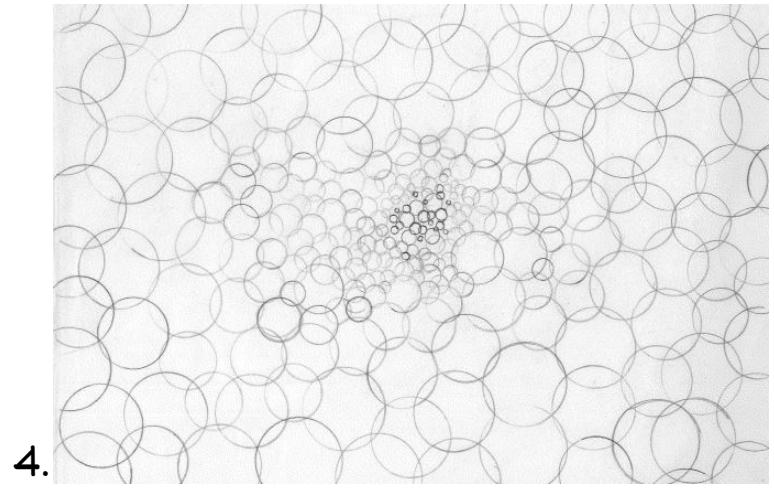
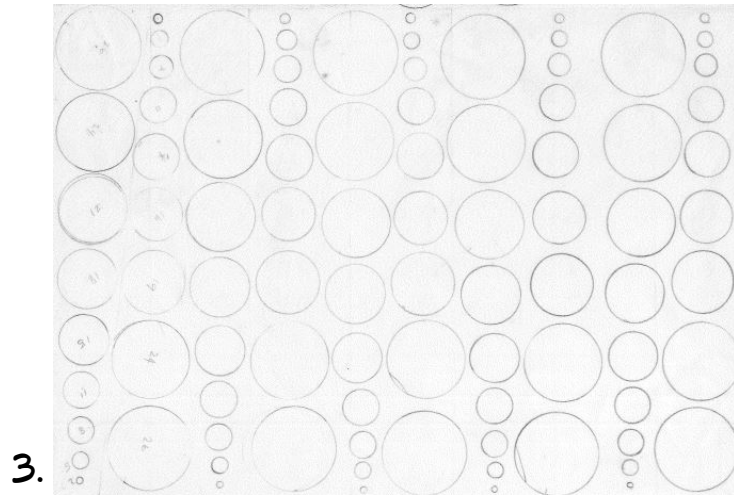
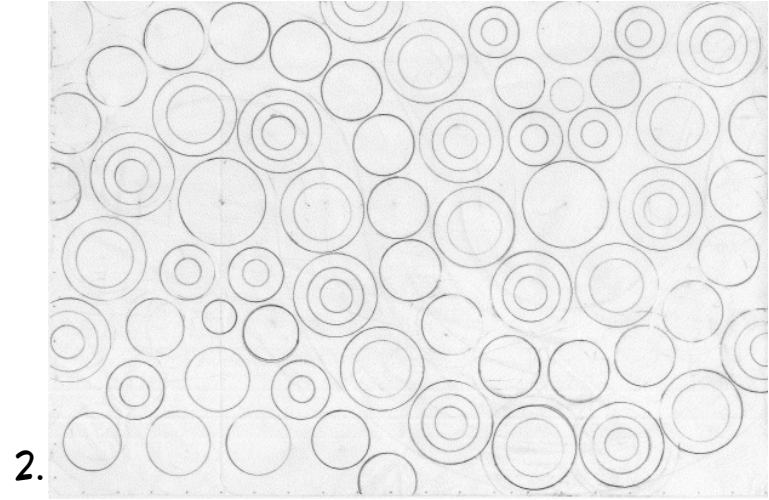
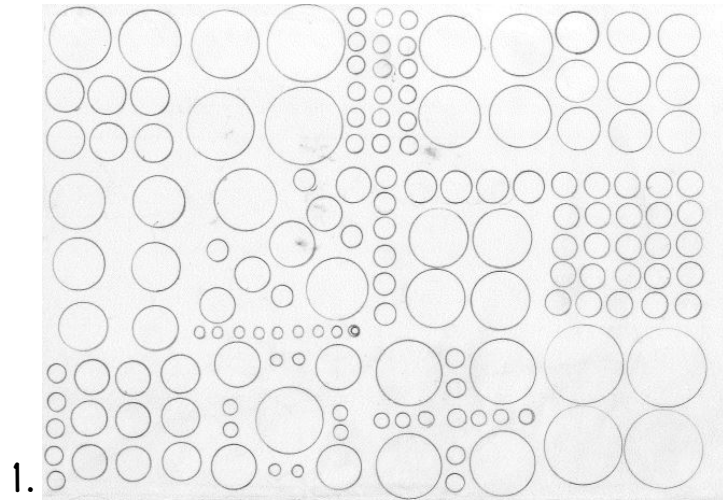
IN THIS ASSIGNMENT, I HAD TO CREATE THREE DISTINCTIVE GEOMETRICAL PATTERNS AND TO INCLUDE THE DESIGN ELEMENTS AND PRINCIPLES. THE SHAPE I USED FOR THE PATTERNS WERE CIRCLE, SQUARE AND TRIANGLE.

FIRSTLY, I DREW ALL THE IDEAS ON THE PATTERN ON A BUTTER PAPER THAT WAS DIVIDED INTO FOUR SECTIONS AS PART OF A COMPOSITION REFERENCE. 3 PATTERN EACH FOR THE CIRCLE, SQUARE AND TRIANGLE GEOMETRICAL SHAPES.

WHEN THE FIRST TASK WAS COMPLETED I HAD TO DRAW 3 COMBINATIONS OF TRIANGLE AND SQUARE, CIRCLE AND TRIANGLE, CIRCLE AND SQUARE.

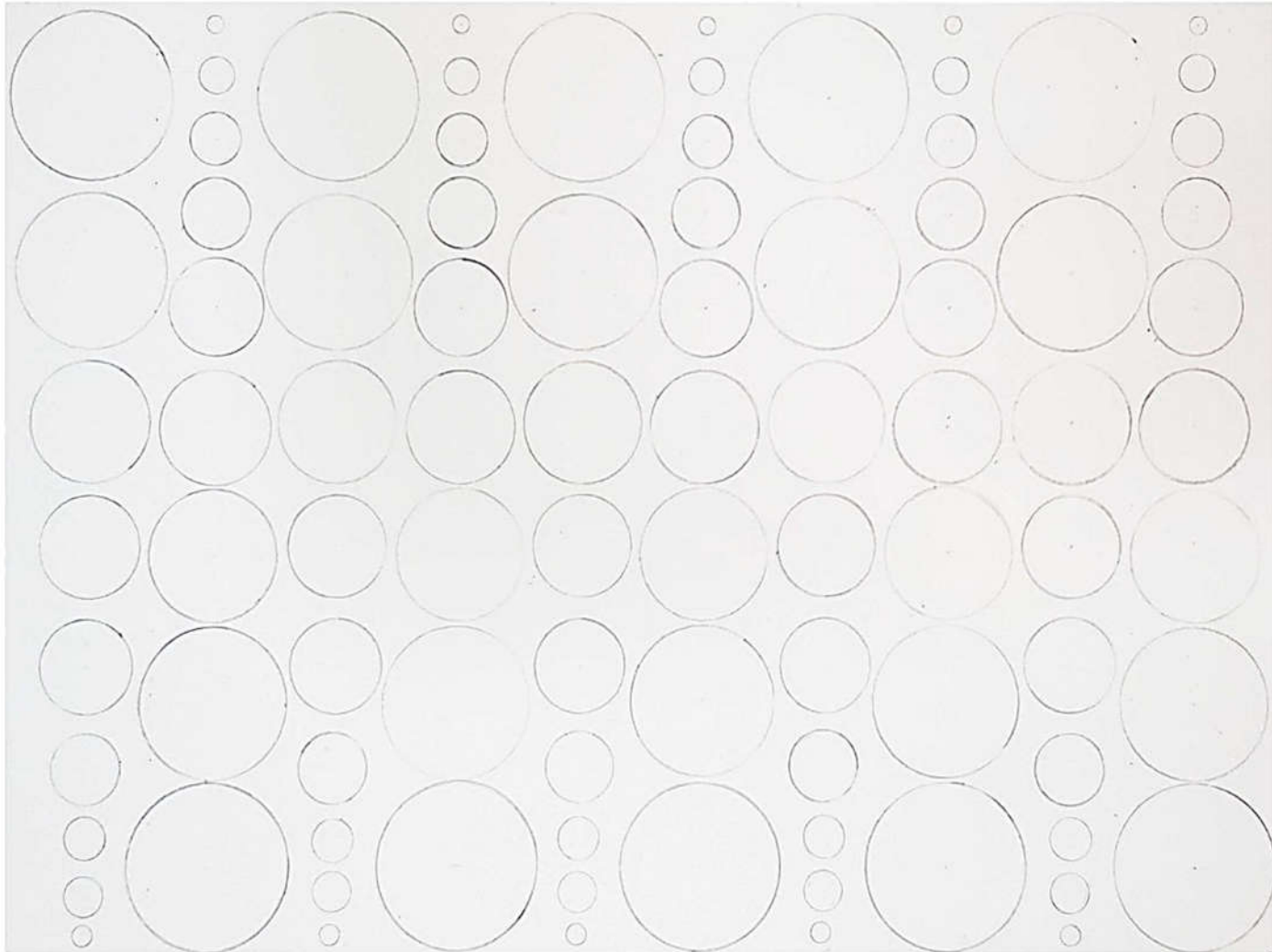
THE LAST TASK WAS TO DRAW 3 COMBINATIONS OF ALL THE SHAPES TOGETHER, CIRCLE, SQUARE AND TRIANGLE. FOR THE FINAL PRESENTATION, ALL THE PATTERNS ARE DRAWN ON THE BUTTER PAPER HAD TO ENLARGE AND BE SCALE ON A3 CARTRIDGE PAPER.

# 01 - GRID AND GEOMETRY



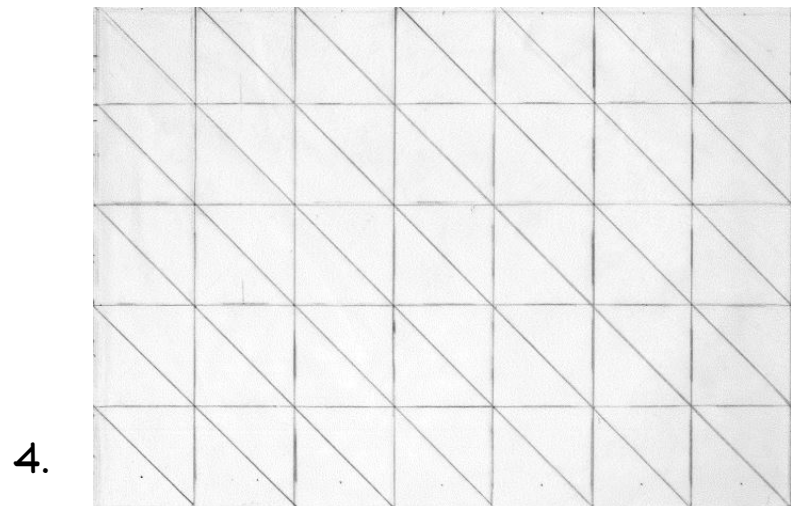
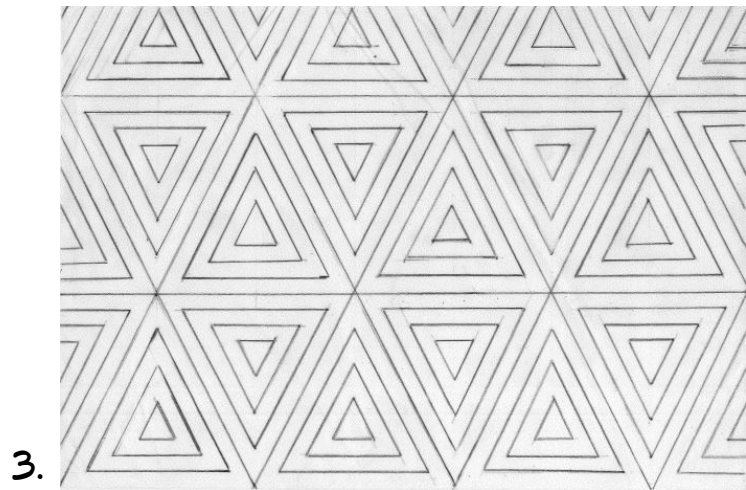
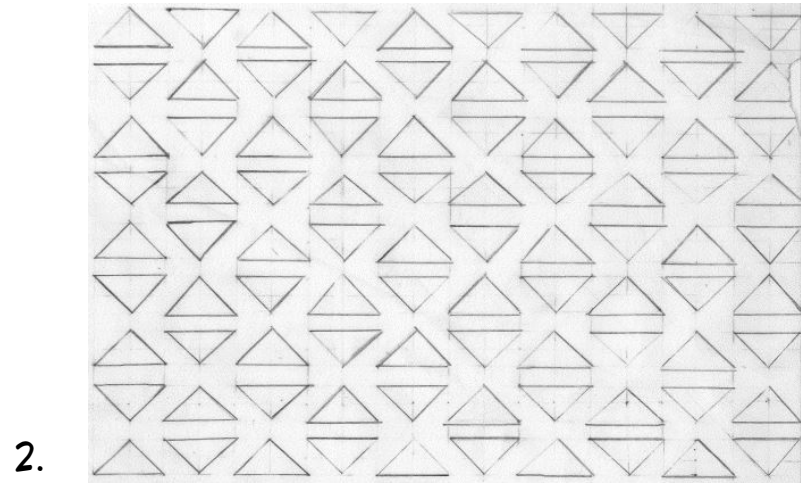
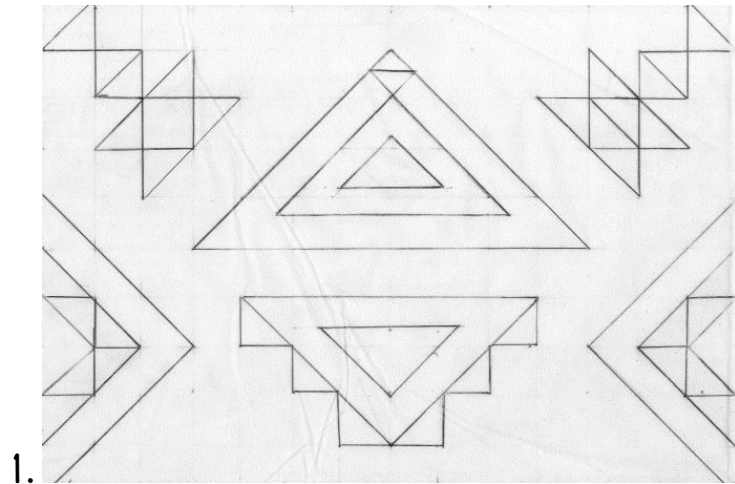
PATTERNS - CIRCLES

# 01 - GRID AND GEOMETRY



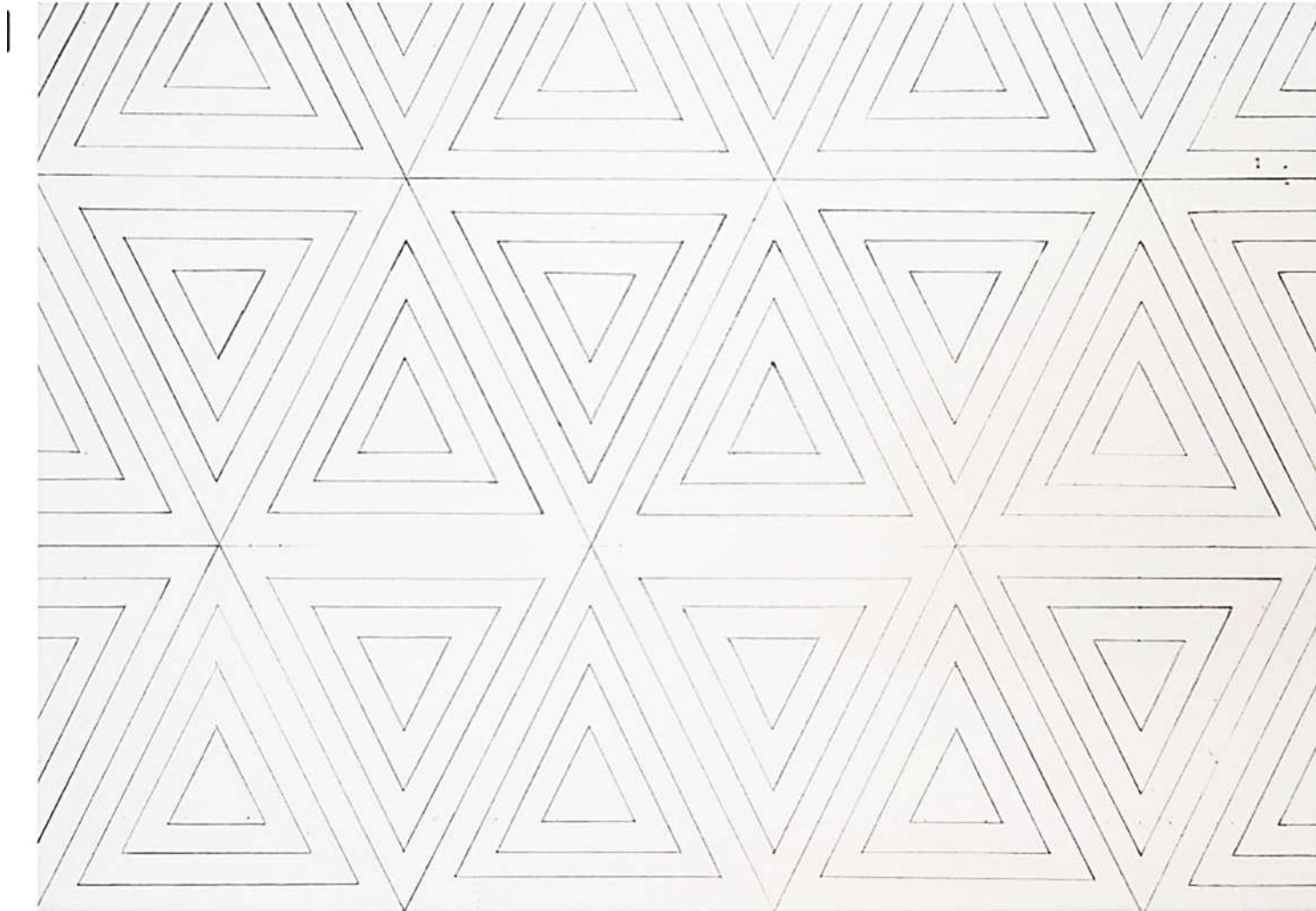
SELECTED PATTERN - CIRCLES

# 01 - GRID AND GEOMETRY



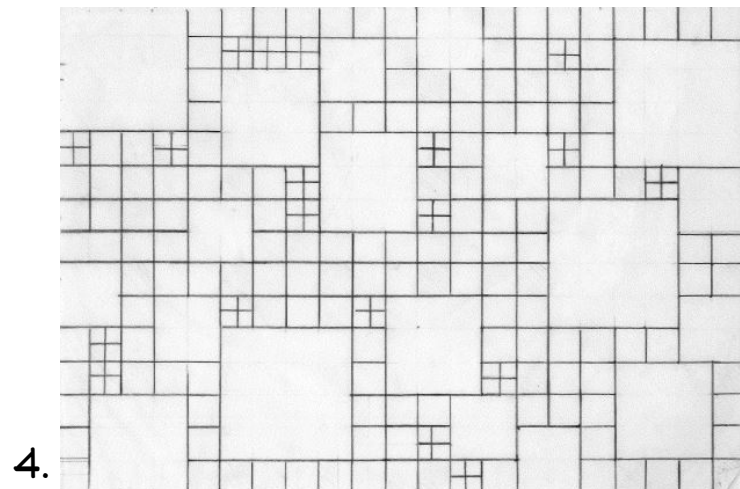
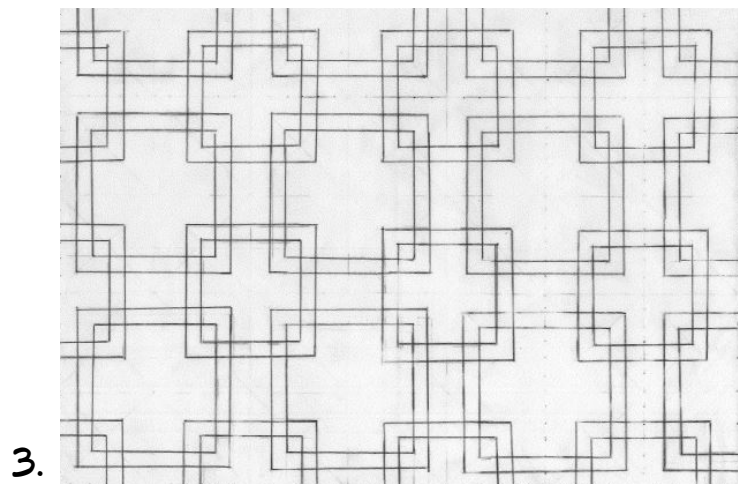
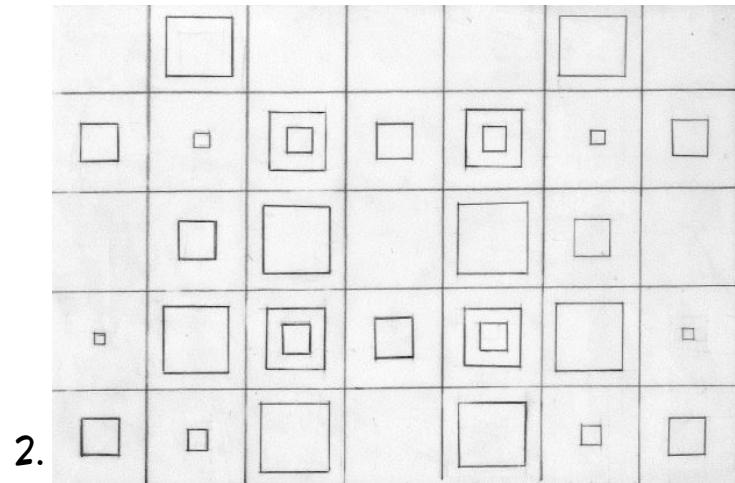
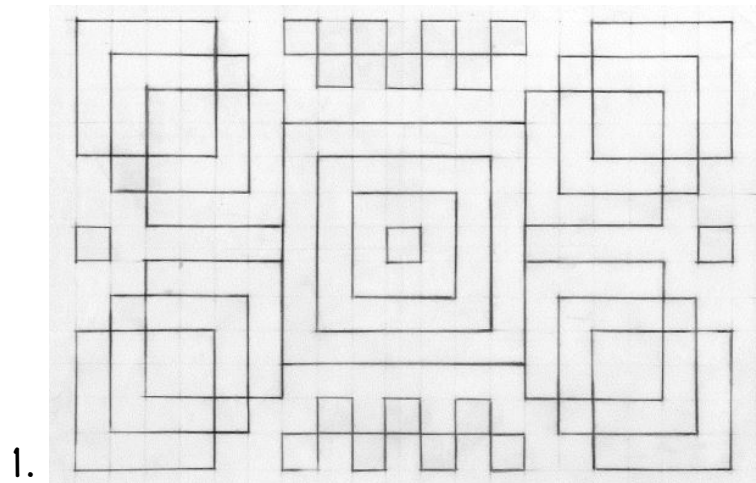
PATTERNS - TRIANGLE

# 01 - GRID AND GEOMETRY



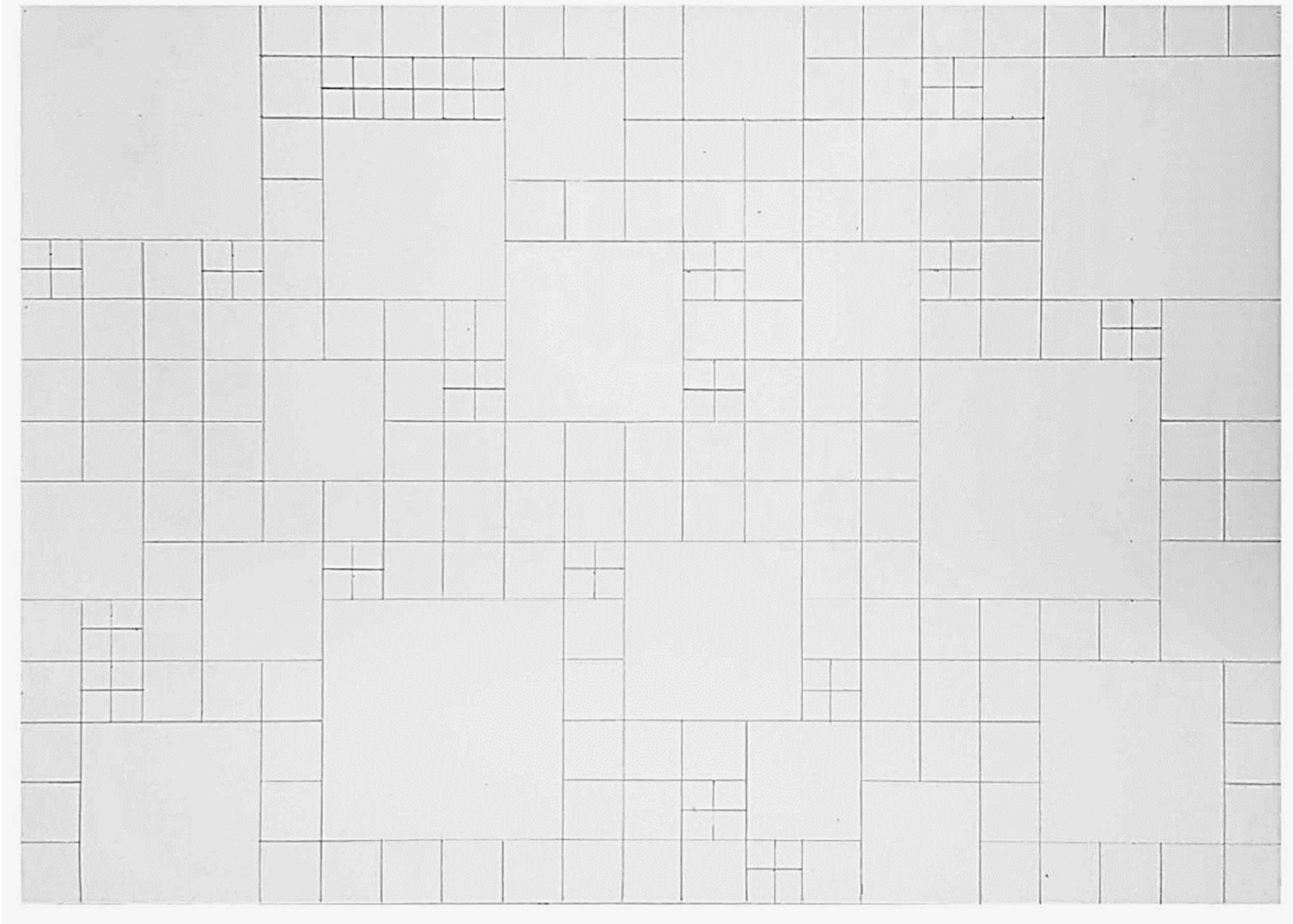
SELECTED PATTERN - TRIANGLE

# 01 - GRID AND GEOMETRY



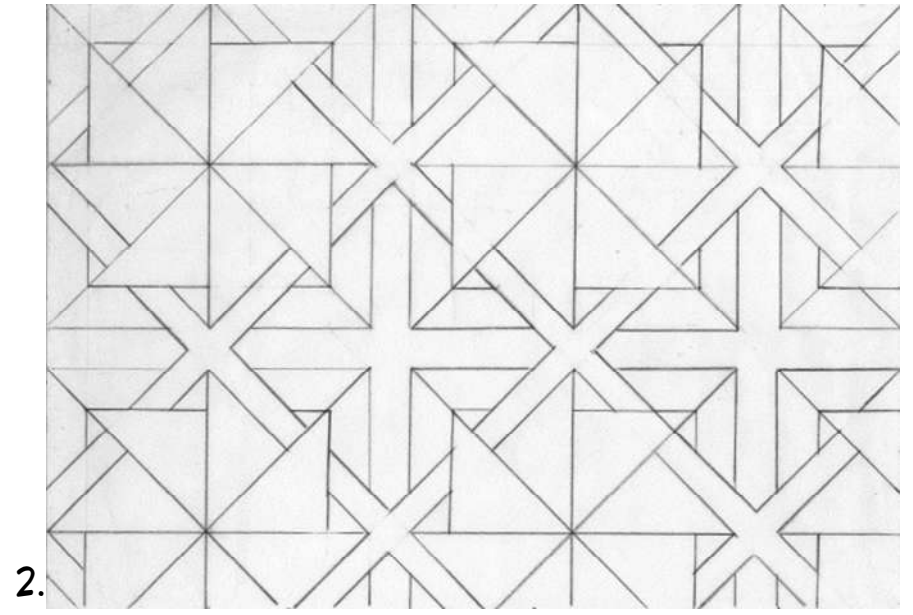
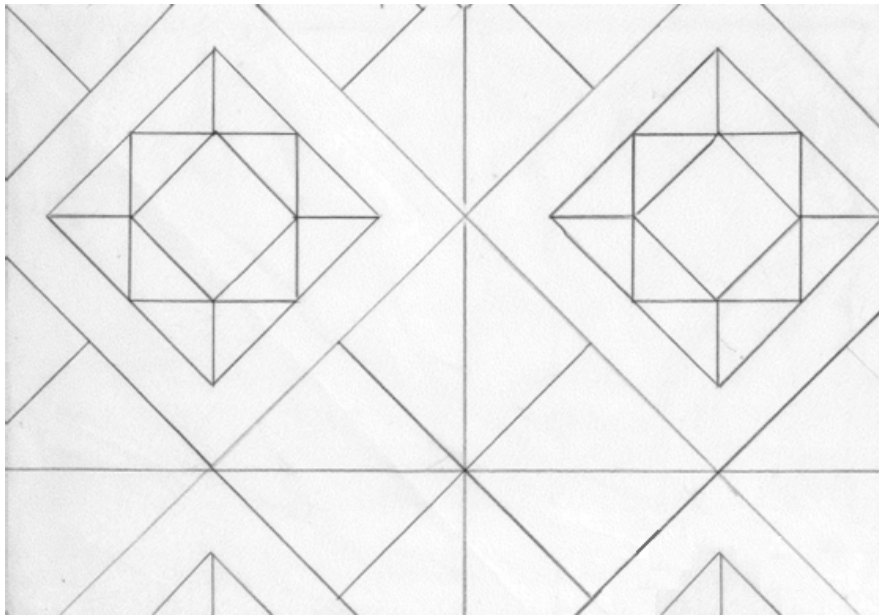
PATTERNS- SQUARE

# 01 - GRID AND GEOMETRY



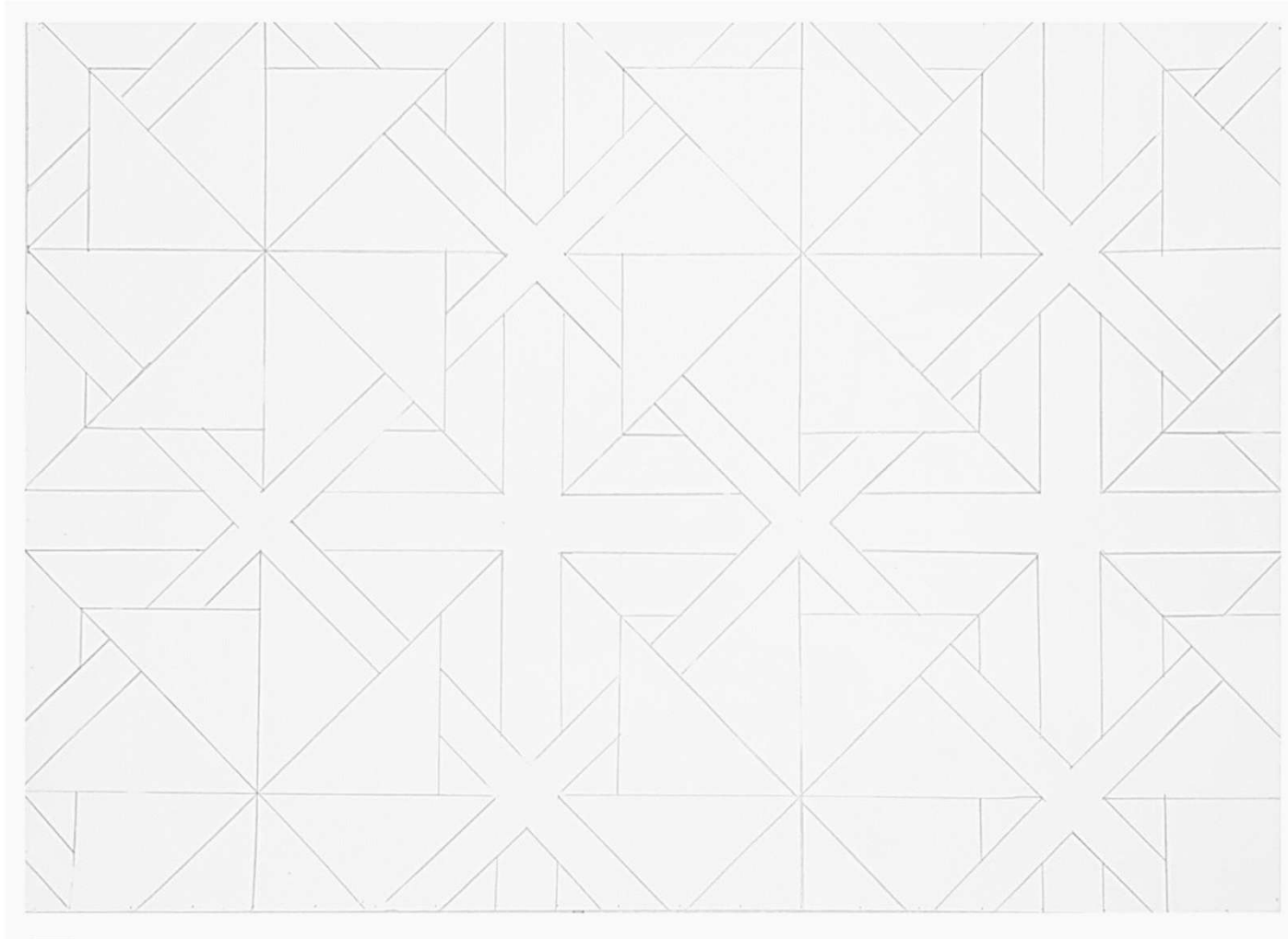
SELECTED PATTERN - SQUARE

# 01 - GRID AND GEOMETRY



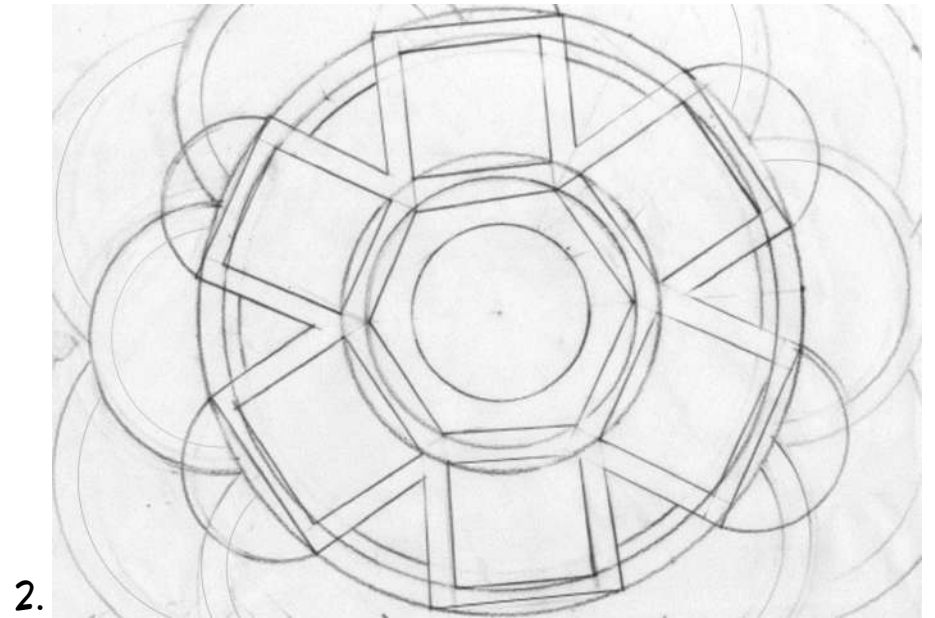
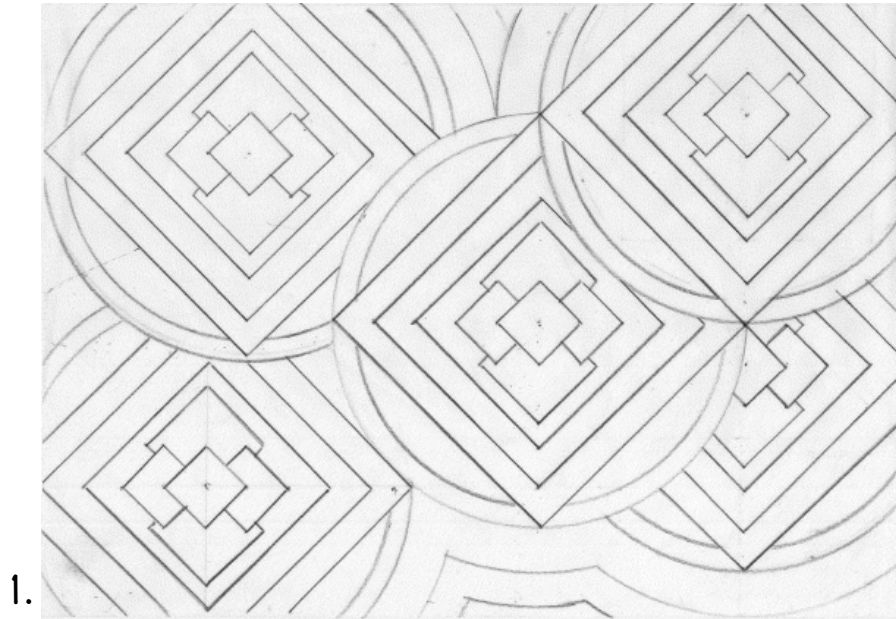
TWO COMBINATION PATTERNS - TRIANGLE AND SQUARE

## 01 - GRID AND GEOMETRY



SELECTED TWO COMBINATION PATTERN - TRIANGLE AND SQUARE

# 01 - GRID AND GEOMETRY



TWO COMBINATION PATTERNS - CIRCLE AND SQUARE

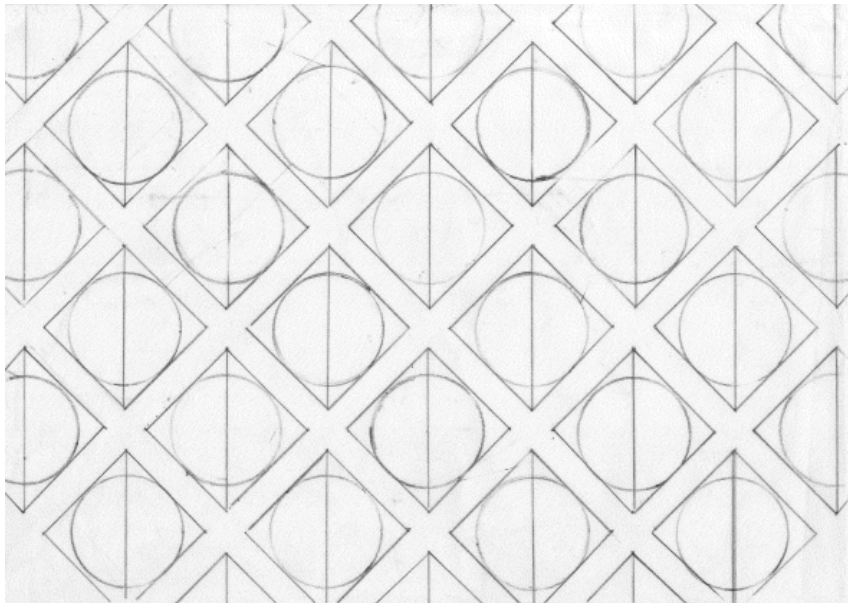
## 01 - GRID AND GEOMETRY



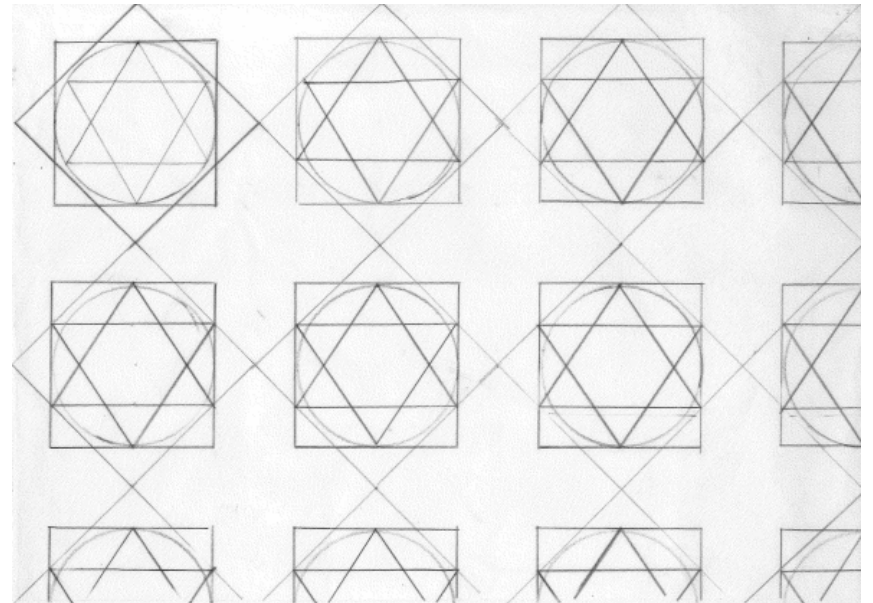
SELECTED TWO COMBINATION PATTERN - CIRCLE AND SQUARE

# 01 - GRID AND GEOMETRY

1.

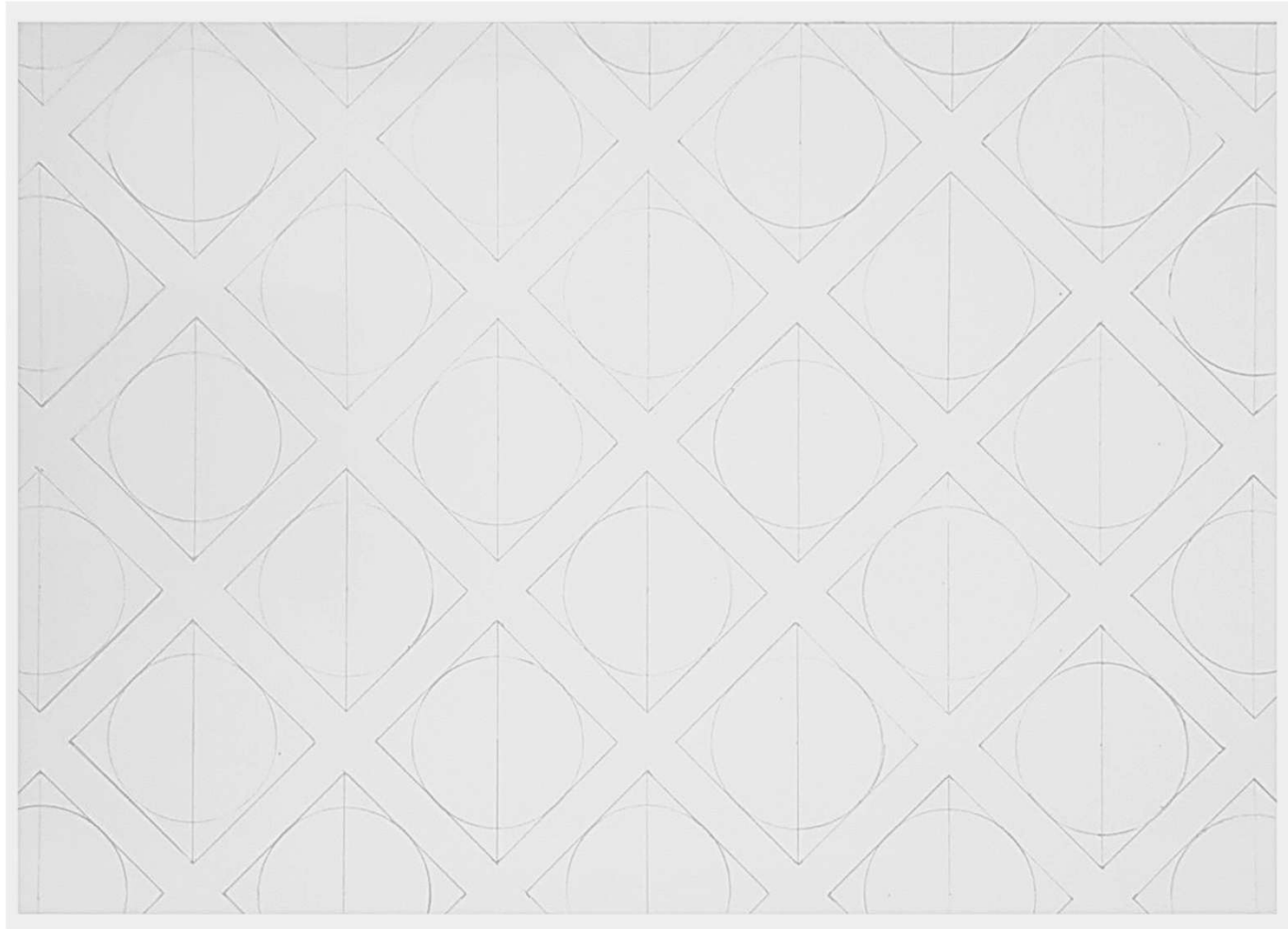


2.



THREE COMBINATION PATTERNS - CIRCLE, TRIANGLE AND SQUARE

## 01 - GRID AND GEOMETRY



SELECTED THREE COMBINATION PATTERN - CIRCLE, TRIANGLE AND SQUARE

## 02 - PATTERN AND TEXTURE

## 02 – PATTERN AND TEXTURE

THIS ASSIGNMENT STUDENTS ARE INTRODUCED TO ANOTHER METHOD OF COMPOSITION BY USING OTHER TECHNIQUES SUCH AS SHADE, SOLID, VOIDS, HEIGHT AND DEPTH TO CREATE CERTAIN TEXTURE ON THE COMPOSITION THAT YOU HAVE DONE PREVIOUSLY. THIS WILL BE A 2D ASSIGNMENT WHICH WILL BE EXTRUDED AND MANIPULATED INTO A 3D COMPOSITION.

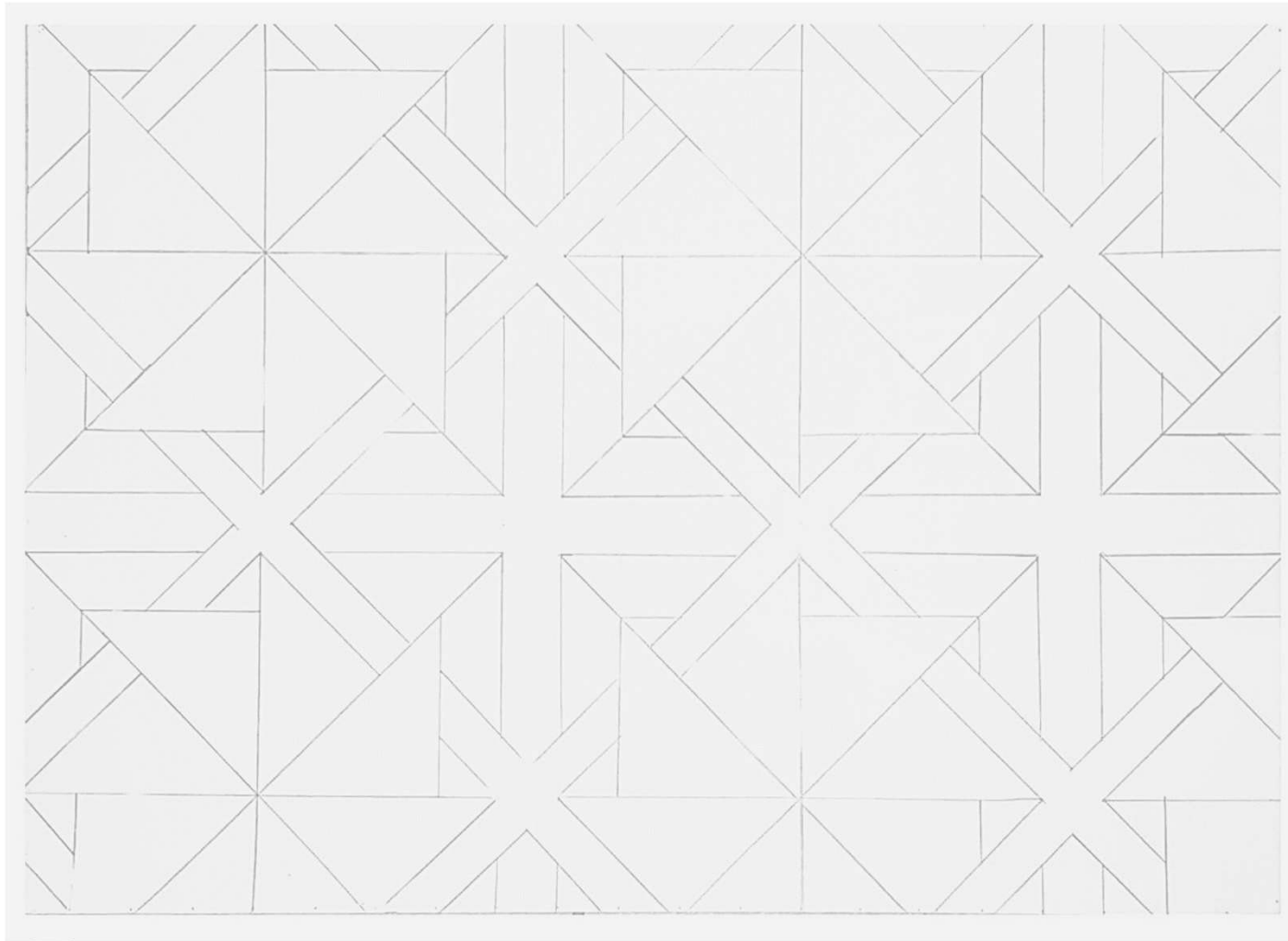
FROM THE PREVIOUS ASSIGNMENT 01 – GRID AND GEOMETRY, TASK ONE REQUIRE TO CHOOSE ONE PATTERN AND CREATE 2 COMPOSITIONS BY USING PRINCIPLES OF COLOUR TO EXPRESS FEELINGS AND EMOTIONS, EITHER FROM USING COLOURED CRAYONS, WATERCOLOUR PAINTS, ACRYLICS, POSTER PAINT, MARKERS ECT...

THE SECOND TASK, I USED THE SAME SELECTED PATTERNS, PASTE IT WITH AN A3 MOUNTING BOARD LATER TO CUT SOME PIECES OUT TO CREATE A FIGURE AND GROUND COMPOSITION.

THE FINAL TASK WAS TO EXCLUDE THE 2D PATTERN TO CREATE 3 PROGRESSIVE 3D MODELS.

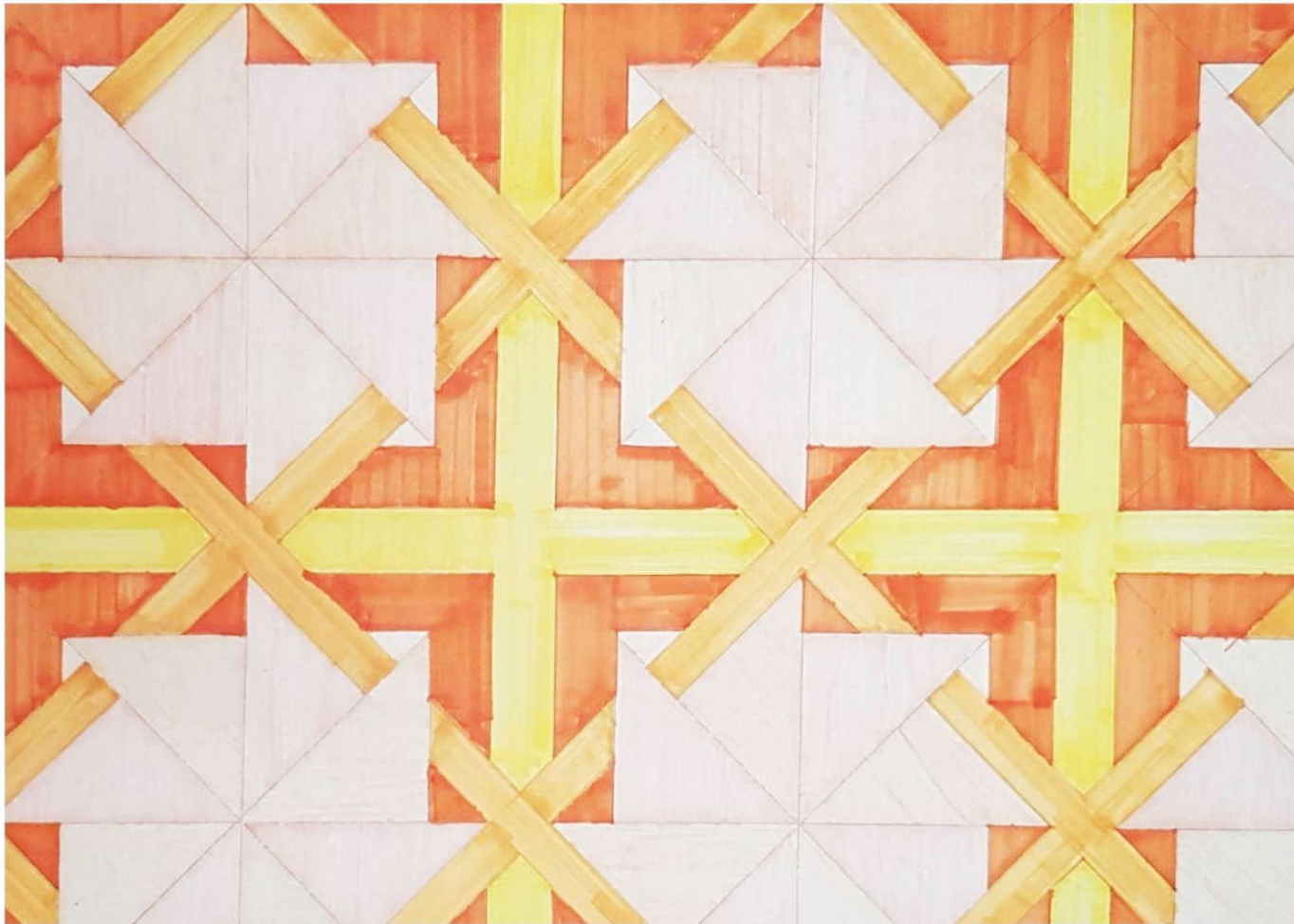
- ONE, EXTRUDE THE COMPOSITION BY USING THE DESIGN ELEMENT OF LINES AND PLANES,
- SECOND, EXTRUDE THE COMPOSITION BY USING THE DESIGN ELEMENT OF LINES, PLANES & VOLUMES
- THIRD AND LAST, EXTRUDE THE COMPOSITION BY USING THE DESIGN ELEMENTS BUT REQUIRED TO USE A COLOURED TRANSPARENCY PLASTIC OR PAPER, TO APPLY MY BASIC UNDERSTANDING OF COLOURS INTO THE DESIGN.

## 02 - PATTERN AND TEXTURE



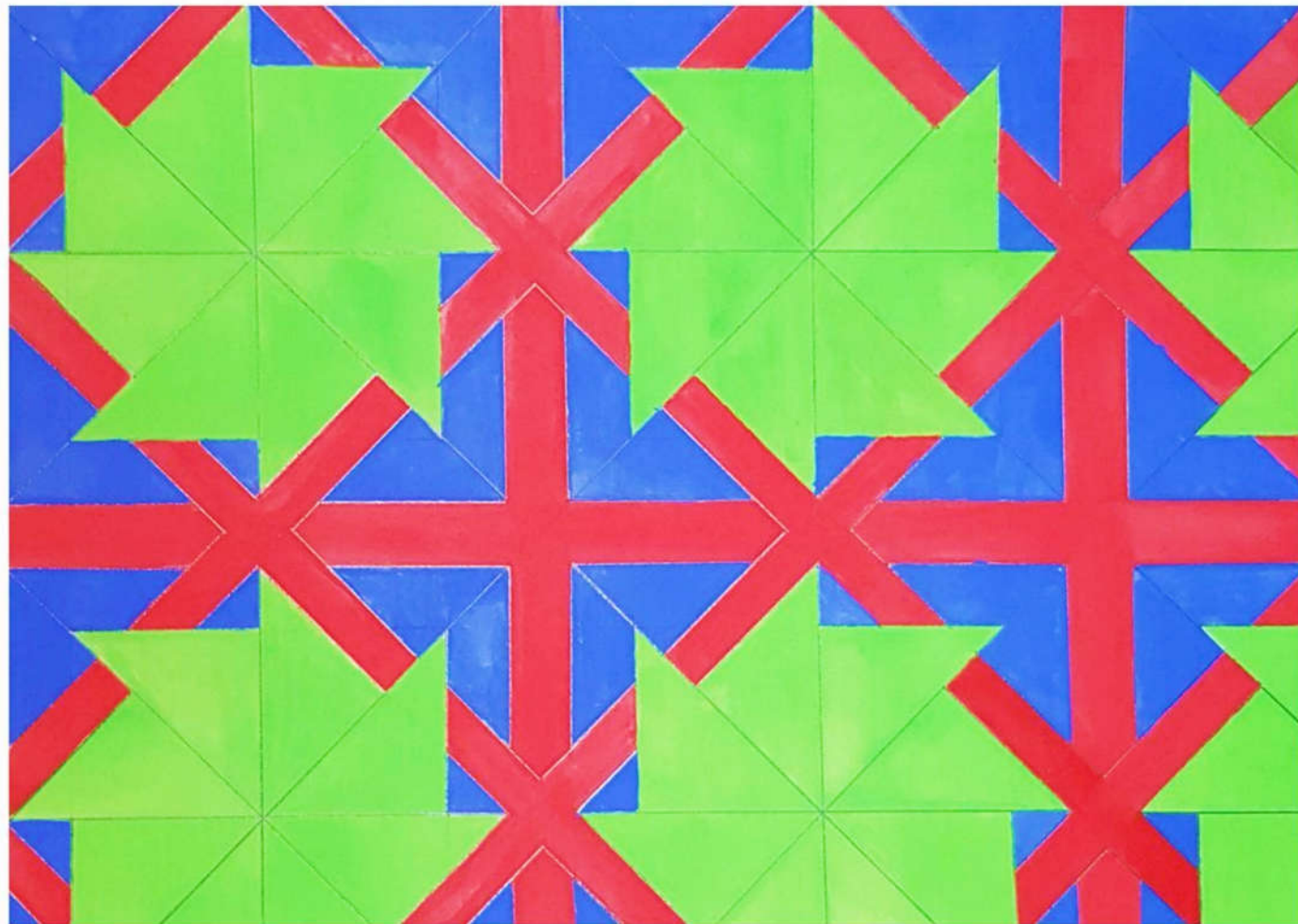
SELECTED PATTERN - TRIANGLE AND SQUARE

## 02 - PATTERN AND TEXTURE



COLOURED PATTERN 1 - COLOURED MARKERS COMPOSITION

## 02 - PATTERN AND TEXTURE



COLOURED PATTERN 2 - POSTER PAINT COMPOSITION

## 02 - PATTERN AND TEXTURE

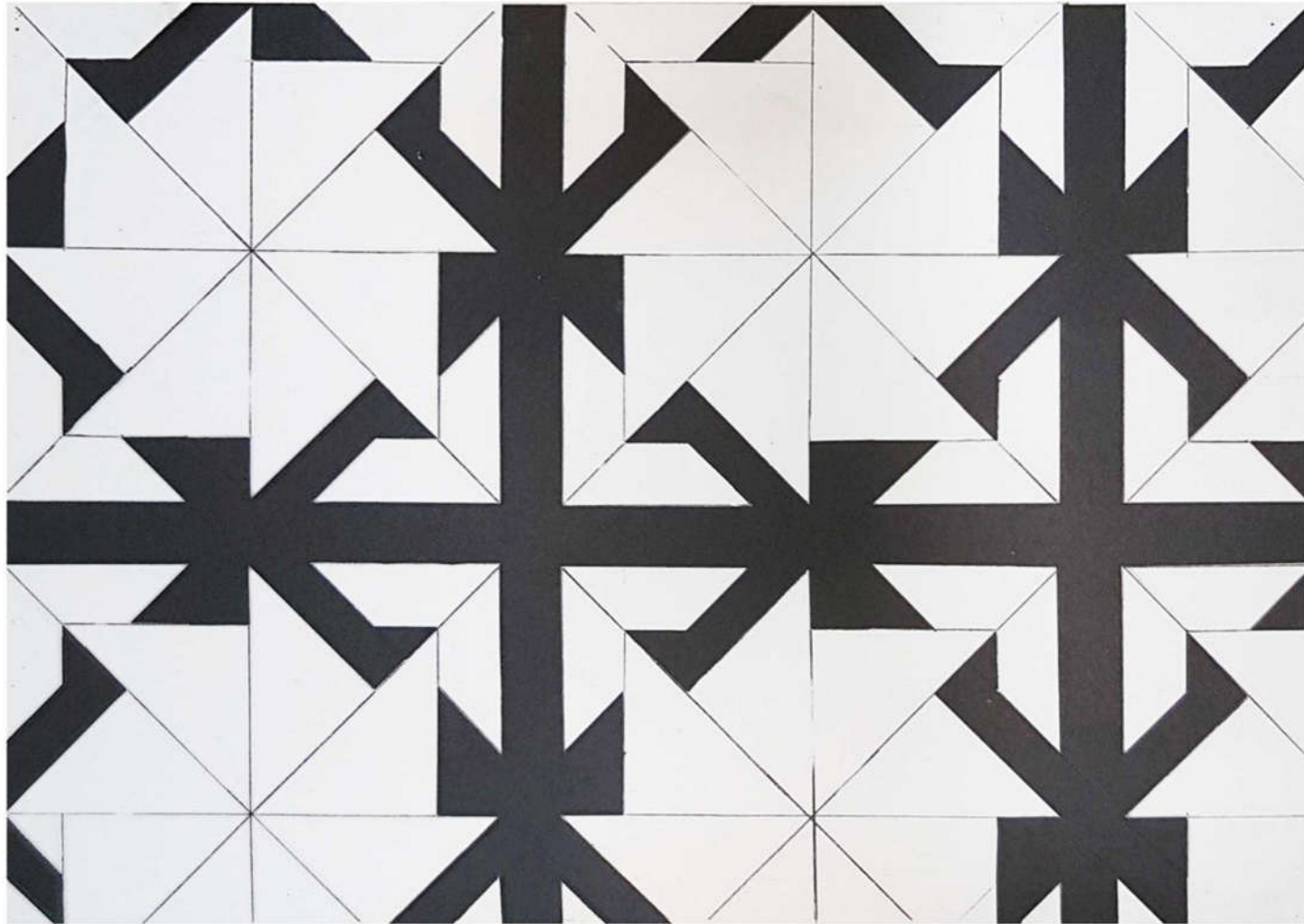
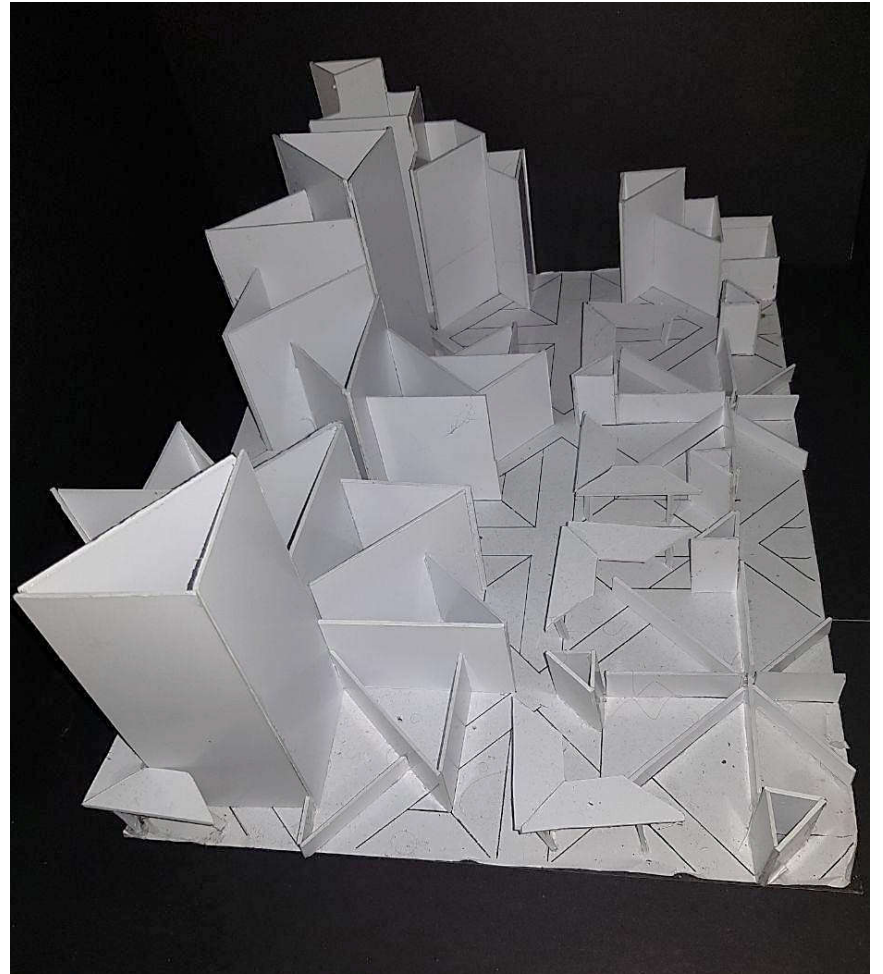
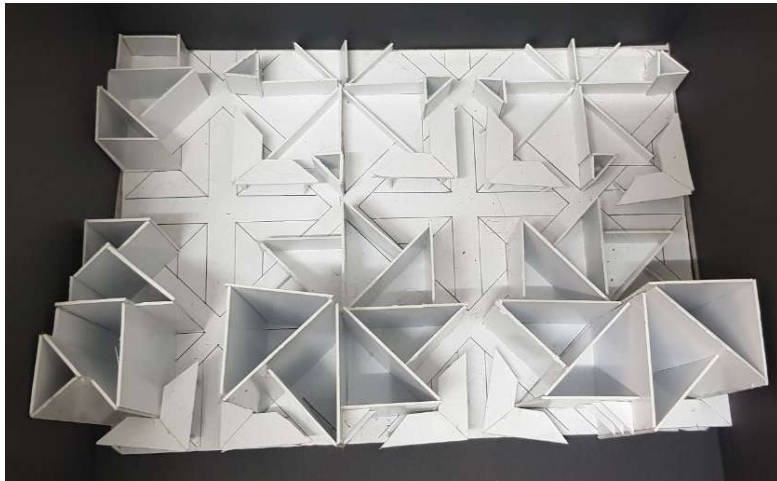
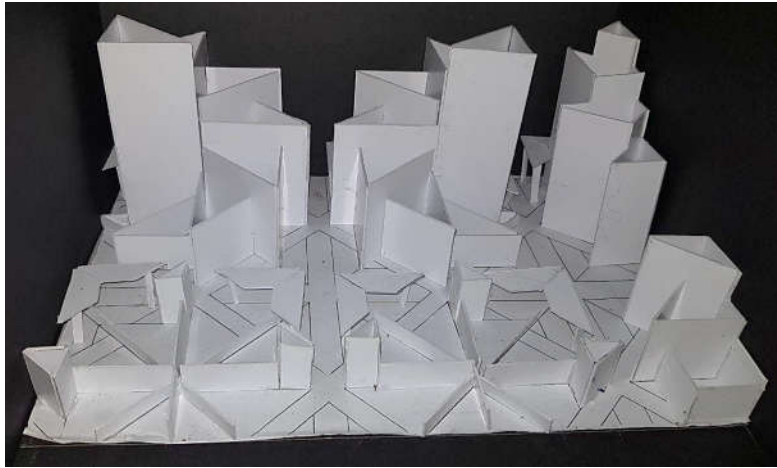


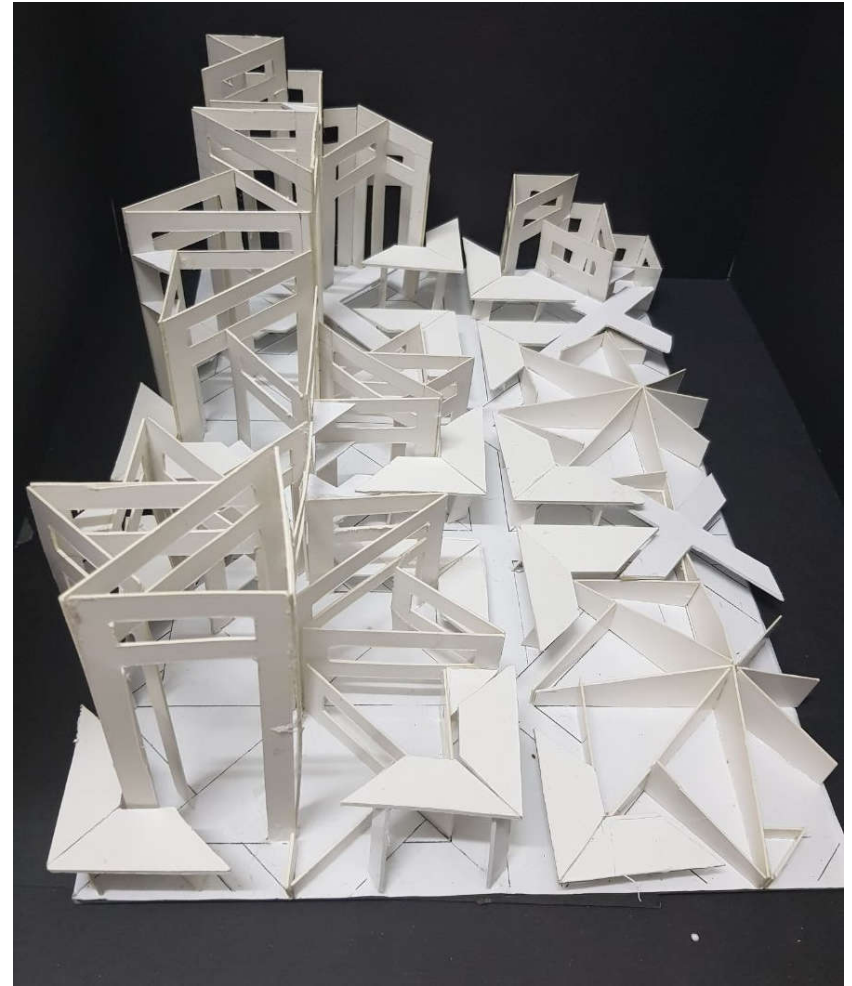
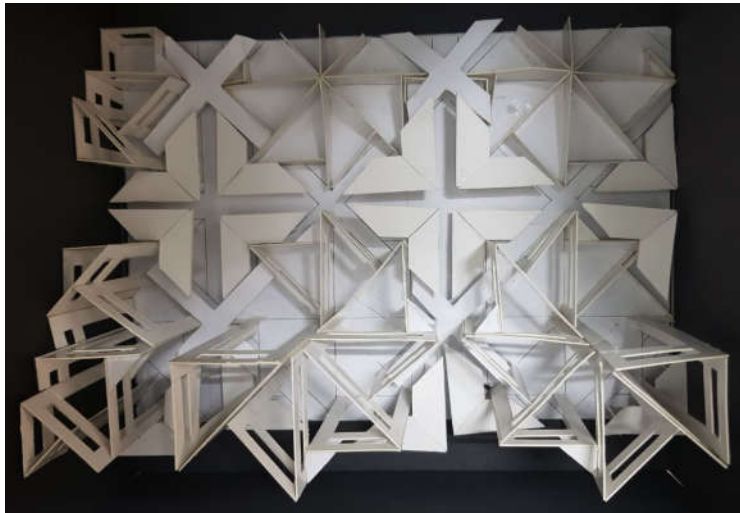
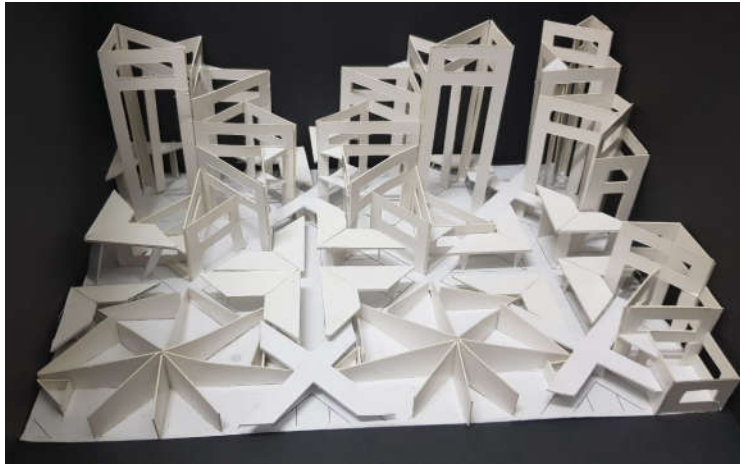
FIGURE AND GROUND COMPOSITION

## 02 - PATTERN AND TEXTURE



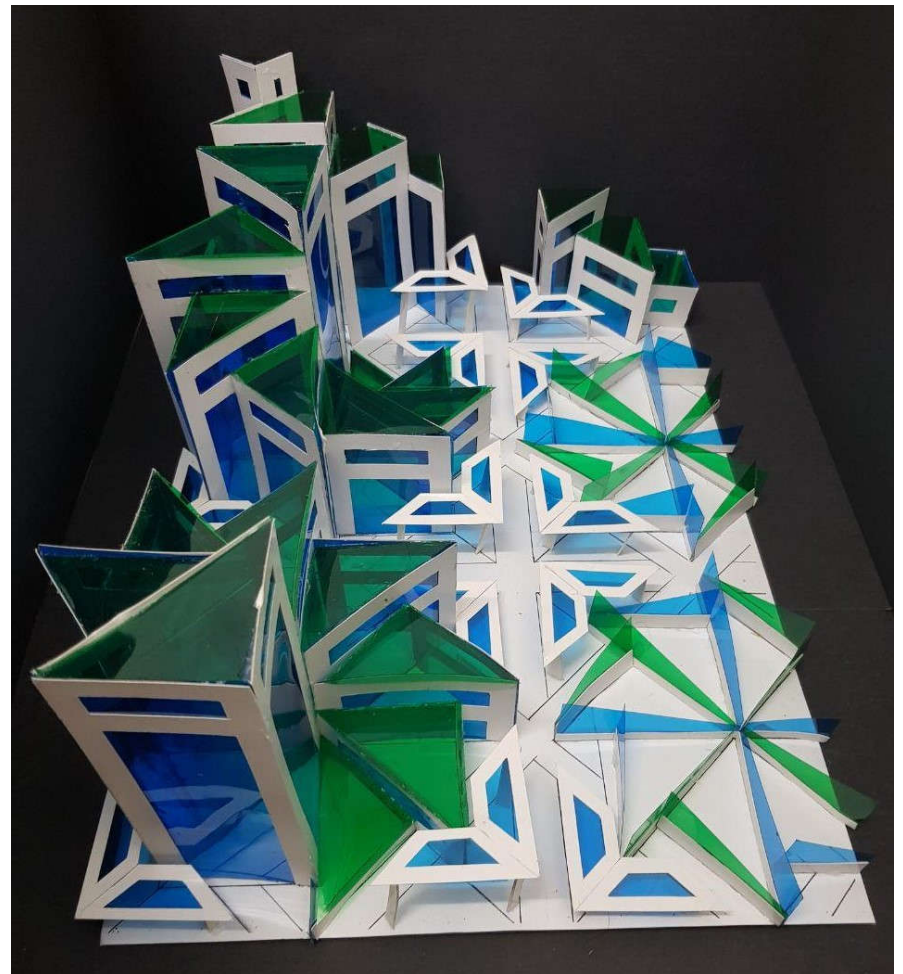
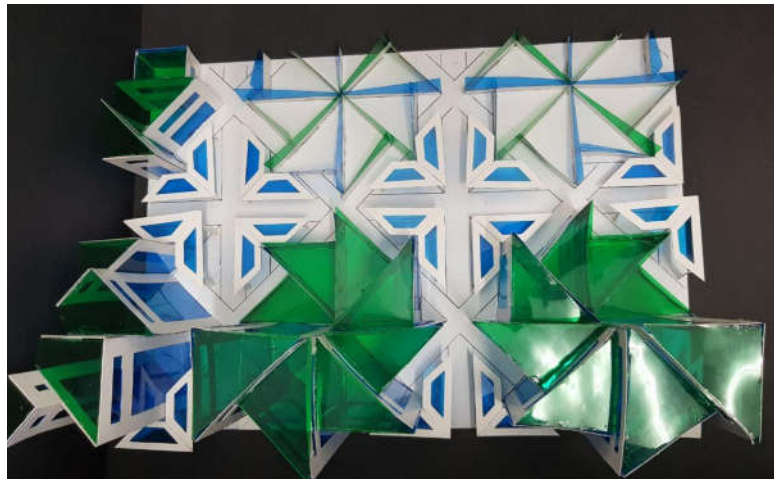
3D EXCLUSION COMPOSITION 1 - THE DESIGN ELEMENT OF LINES AND PLANES,

## 02 - PATTERN AND TEXTURE



3D EXCLUSION COMPOSITION 2 - THE DESIGN ELEMENT OF LINES, PLANES AND VOLUME

## 02 - PATTERN AND TEXTURE



3D EXCLUSION COMPOSITION 3 - THE DESIGN ELEMENT OF LINES, PLANES AND VOLUME USING COLOURS

03 - 80 CUBE

## 03 – 80 CUBE

THE AIM OF THIS ASSIGNMENT IS TO GENERATE FORM AND SPACE THROUGH VARIOUS METHODS OF ARCHITECTURAL DRAWING AND MAKING MODEL(S) WITH THE EMPHASIS ON EXPLORING THE IDEA OF CRAFTING SPACE. STUDENTS WILL BE SHOWN THE IMPORTANCE OF USING THE ART OF CRAFTING AND MAKING AS A CRITICAL DESIGN TOOL AS PART OF THE DESIGN PROCESS.

I WAS REQUIRED TO DESIGN A SPACE FOR 1 (ONE) PERSON. IN THIS PROJECT I WAS NEEDED TO ENSURE THAT THE FORM AND SPACES COULD BE EXPERIENCED THROUGH MY TWO CHOSEN WORDS:

- (I) DOMINANCE
- (II) SUBTRACTION

# 03 – 80 CUBE:

## FIRST CHOSEN WORDS; DOMINANCE

WITH THIS PRINCIPLE OF DESIGN, IT IS CONSIDER TO BE THE EMPHASIS IN APPEARANCE. BY USING VISUAL WEIGHT THE ELEMENTS IN PARTICULAR TO HAVE POWER OVER OTHER ELEMENT. THE ELEMENT STANDOUT AND THIS IS OBSERVED AS A FOCAL POINT. THE COMPOSITION COULD BE DIFFERENTIATE EITHER IN SPACE, SIZE, SHAPE, COLOUR, PERSPECTIVE AND EVEN IN TEXTURE.

THERE ARE THREE STAGE OF DOMINANCE EACH RELATING TO THE WEIGHT OF A RELATING OBJECT WITHIN A COMPOSITION

*DOMINANT:* THE OBJECT GIVEN THE MOST VISUAL WEIGHT, THE ELEMENT OF PRIMARY EMPHASIS THAT ADVANCES TO THE FOREGROUND IN THE FOREGROUND IT THE COMPOSITION.

*SUB – DOMINANT:* THE ELEMENT OF SECONDARY EMPHASIS, THE ELEMENTS IN THE GROUND OF THE COMPOSITION.

*SUBORDINATE:* THE OBJECT GIVEN TO LEAST VISUAL WEIGHT, THE ELEMENT OF TERTIARY EMPHASIS THAT RECEDES TO THE BACKGROUND OF THE COMPOSITION.



LOUVRE PYRAMID – FRANCE  
AR. M. PEI

HIGHLIGHT



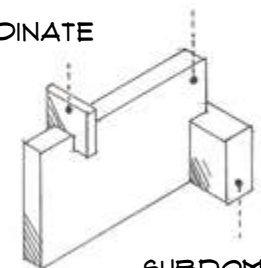
COLOUR



SIZE



DOMINANT  
SUBORDINATE



SUBDOMINANT

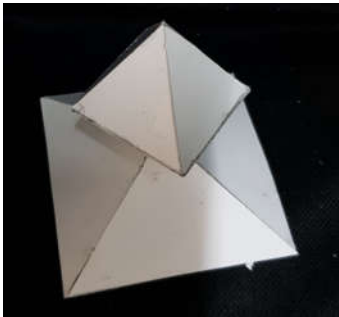
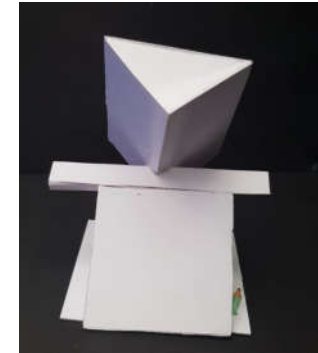
## RESEARCH AND PRECEDENT STUDIES

03 - 80 CUBE:

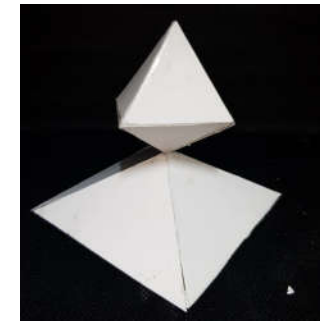
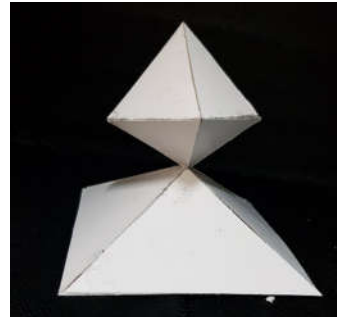
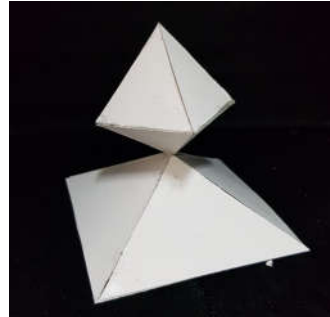
FIRST CHOSEN WORDS; DOMINANCE



PROTOTYPE 1



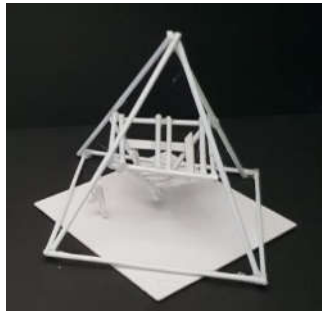
PROTOTYPE 2



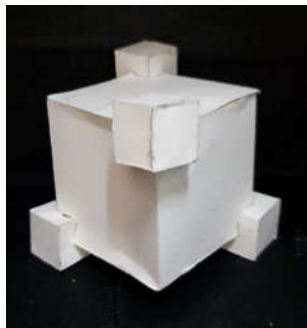
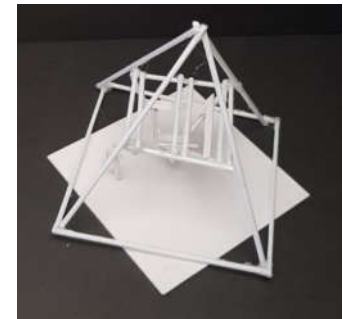
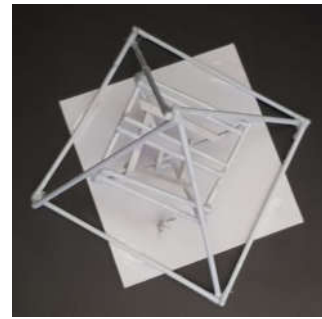
MOCK UP MODELS

03 - 80 CUBE:

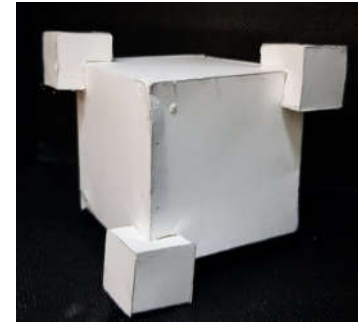
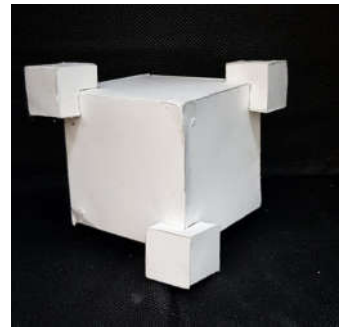
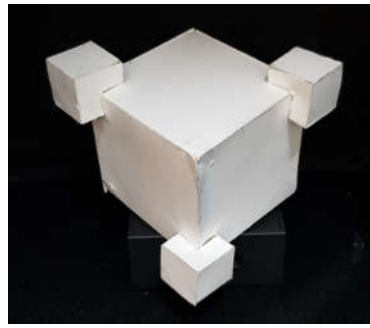
FIRST CHOSEN WORDS; DOMINANCE



PROTOTYPE 3



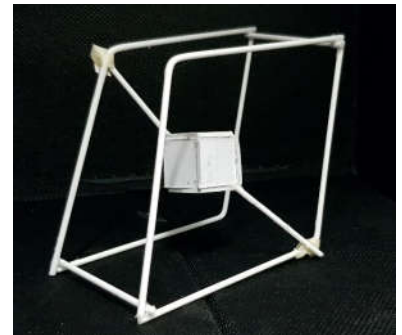
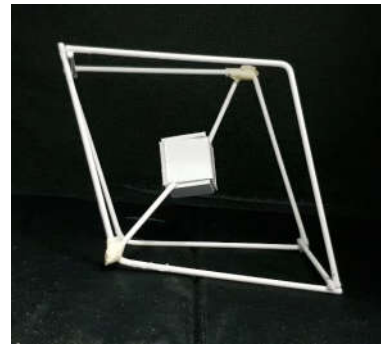
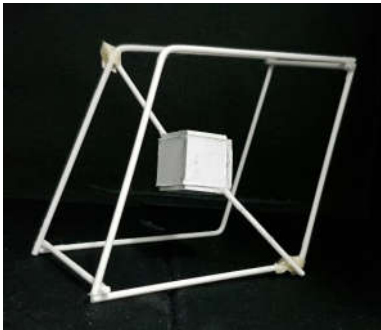
PROTOTYPE 4



MOCK UP MODELS

03 - 80 CUBE:

FIRST CHOSEN WORDS; DOMINANCE



PROTOTYPE 5

MOCK UP MODELS

# 03 - 80 CUBE:

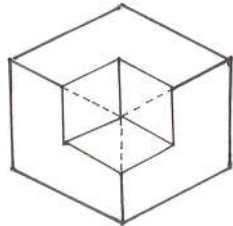
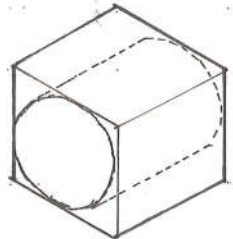
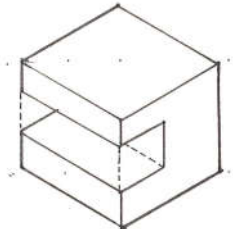
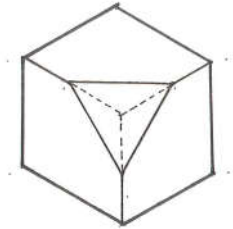
## FIRST CHOSEN WORDS; SUBTRACTION

ALL OTHER FORMS CAN BE UNDERSTOOD TO BE TRANSFORMATIONS OF THE PRIMARY SOLIDS, VARIATIONS WHICH ARE GENERATED BY THE MANIPULATION OF ONE OR MORE DIMENSIONS OR BY THE ADDITION OR SUBTRACTION OF ELEMENTS.

THIS TRANSFORMATION FORM IS USUALLY ACHIEVED BY REMOVING ONE OR MANY PARTS OF A REGULAR FORM. THE FORM CAN BE A CUBE, SPHERE, A CYLINDER OR A PYRAMID.

ANY MODIFICATION THAT IS MADE TO THE FORM SHOULD NOT AFFECT THE GEOMETRIC STRUCTURE OF THE PRIMARY STATE OF THE FORM.

SUBTRACTIVE TRANSFORMATION CREATES VOLUMES OF SPACE.



TWO MOON - SOUTH KOREA  
AR. MOON HOON

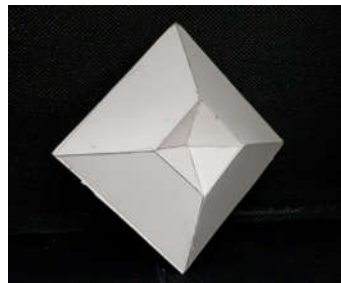
RESEARCH AND PRECEDENT STUDIES

03 - 80 CUBE:

FIRST CHOSEN WORDS; SUBTRACTION



PROTOTYPE 1



PROTOTYPE 2

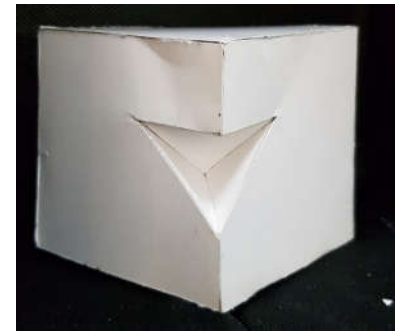
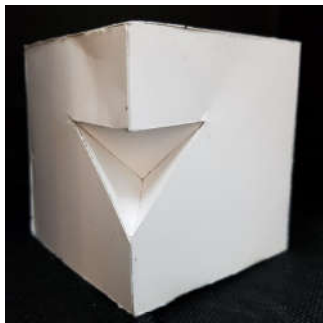
MOCK UP MODELS

03 - 80 CUBE:

FIRST CHOSEN WORDS; SUBTRACTION



PROTOTYPE 3

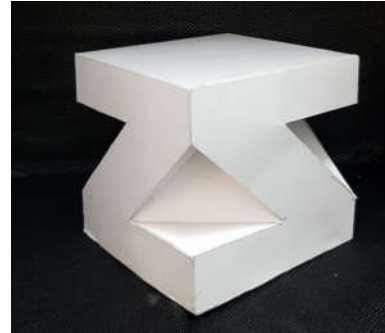
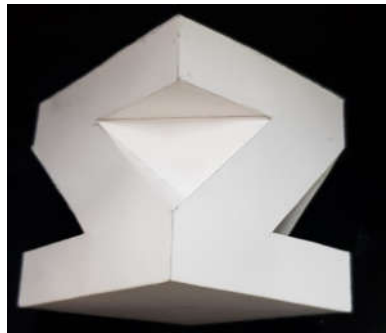


PROTOTYPE 4

MOCK UP MODELS

03 - 80 CUBE:

FIRST CHOSEN WORDS; SUBTRACTION

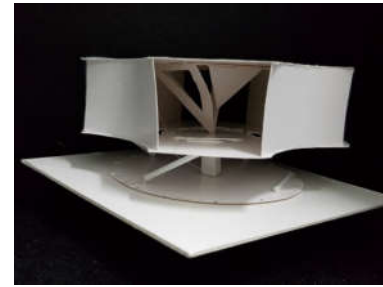
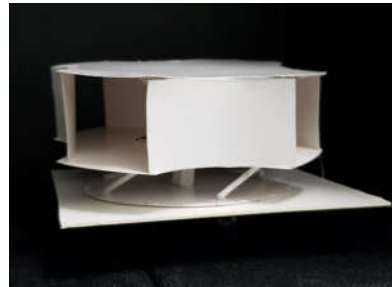
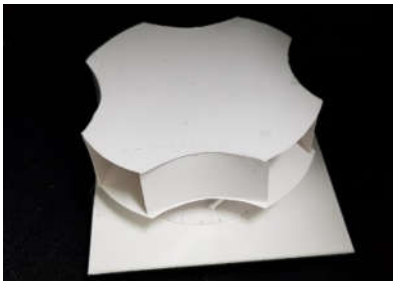


PROTOTYPE 5

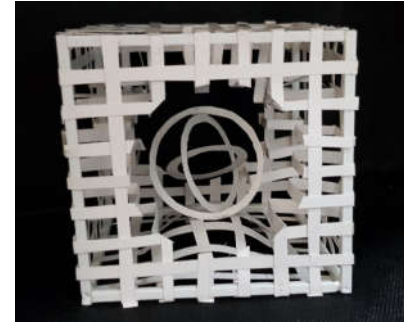
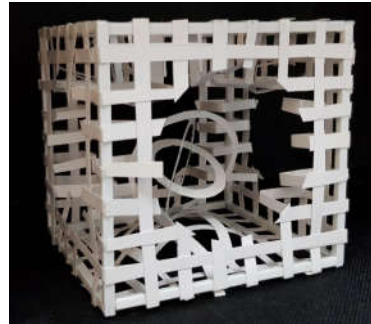
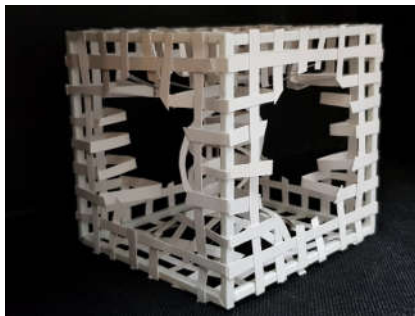
MOCK UP MODELS

## 03 - 80 CUBE:

### TWO CHOSEN WORDS; DOMINANCE AND SUBTRACTION



COMBINATION PROTOTYPE 1

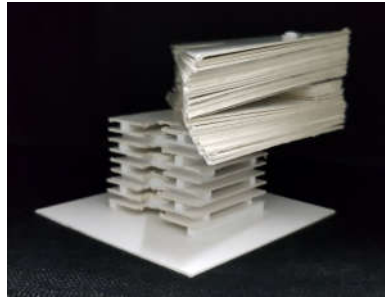


COMBINATION PROTOTYPE 2

MOCK UP MODELS

03 - 80 CUBE:

TWO CHOSEN WORDS; DOMINANCE AND SUBTRACTION



COMBINATION PROTOTYPE 3

MOCK UP MODELS

03 - 80 CUBE:

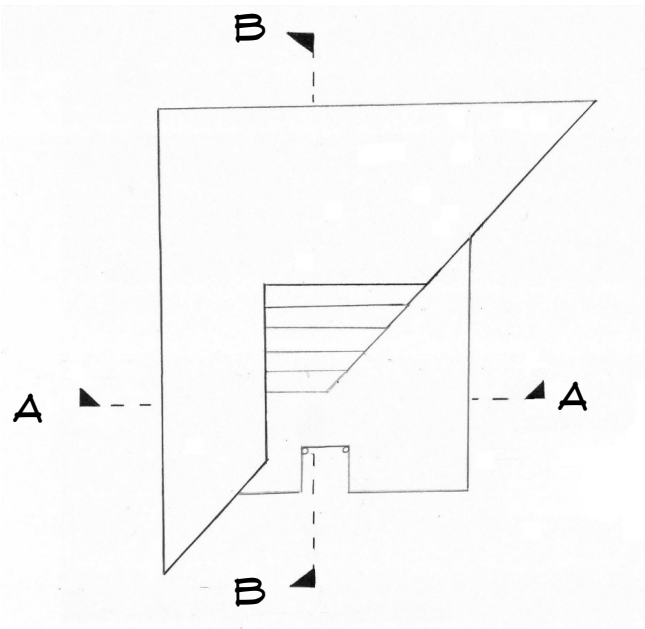
TWO CHOSEN WORDS; DOMINANCE AND SUBTRACTION



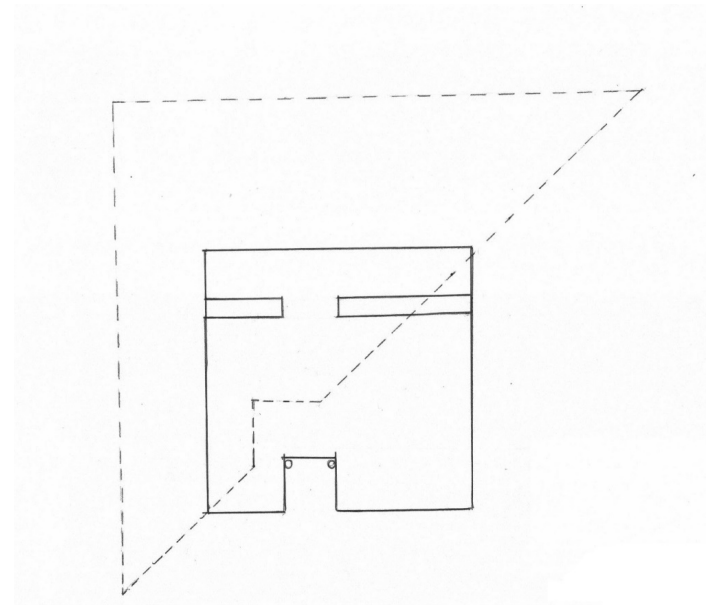
FINAL COMBINATION MODELS

03 - 80 CUBE:

TWO CHOSEN WORDS; DOMINANCE AND SUBTRACTION



TOP VIEW

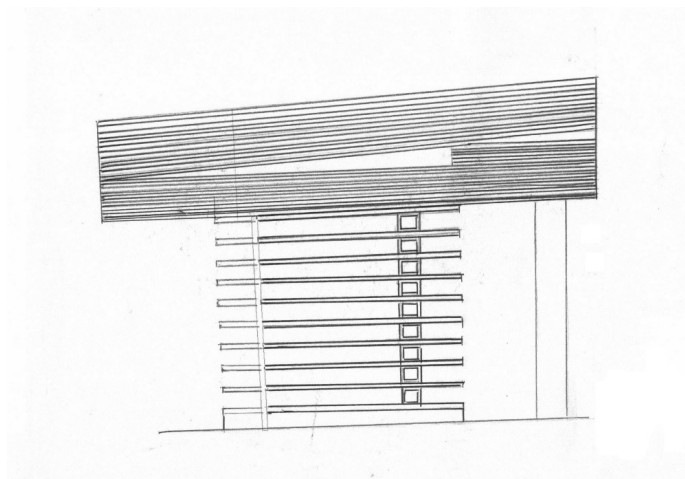


PLAN VIEW

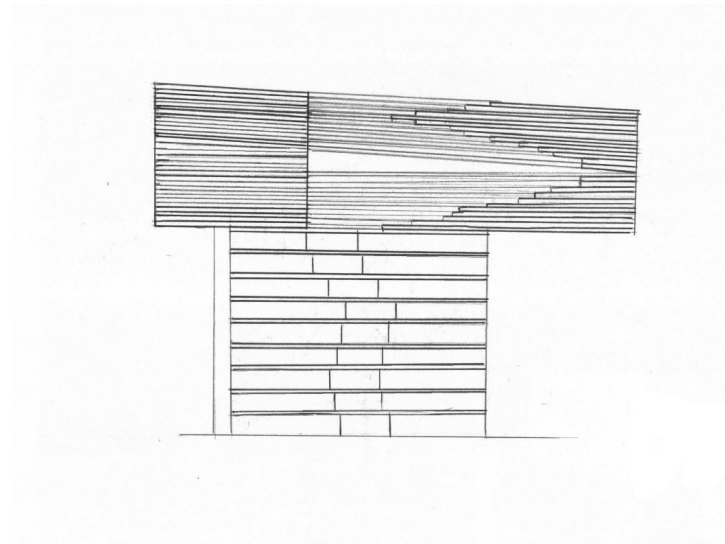
FINAL COMBINATION MODELS

03 - 80 CUBE:

TWO CHOSEN WORDS; DOMINANCE AND SUBTRACTION



SECTION A-A

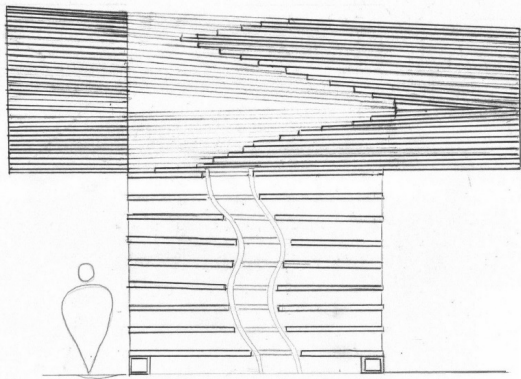


SECTION B-B

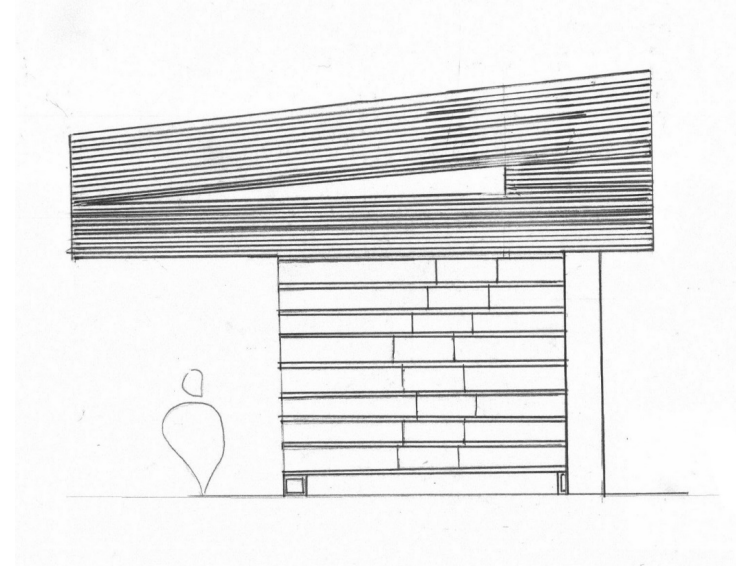
FINAL COMBINATION MODELS

03 - 80 CUBE:

TWO CHOSEN WORDS; DOMINANCE AND SUBTRACTION



FRONT ELEVATION

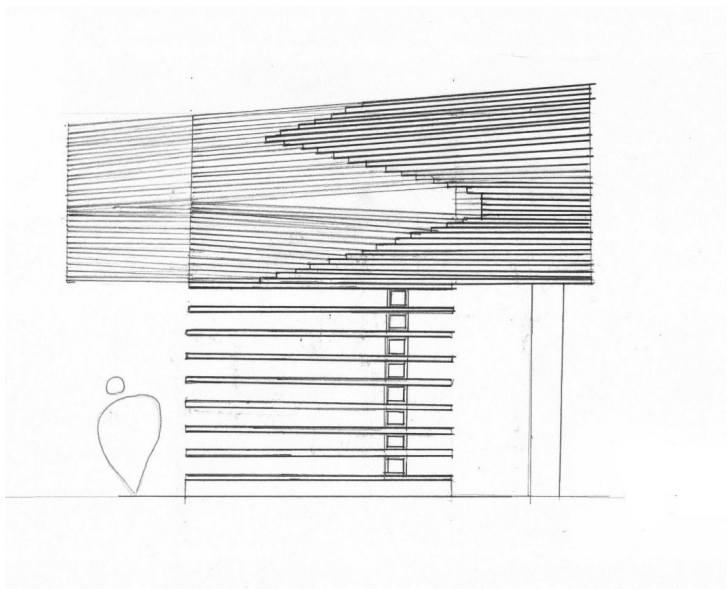


BACK ELEVATION

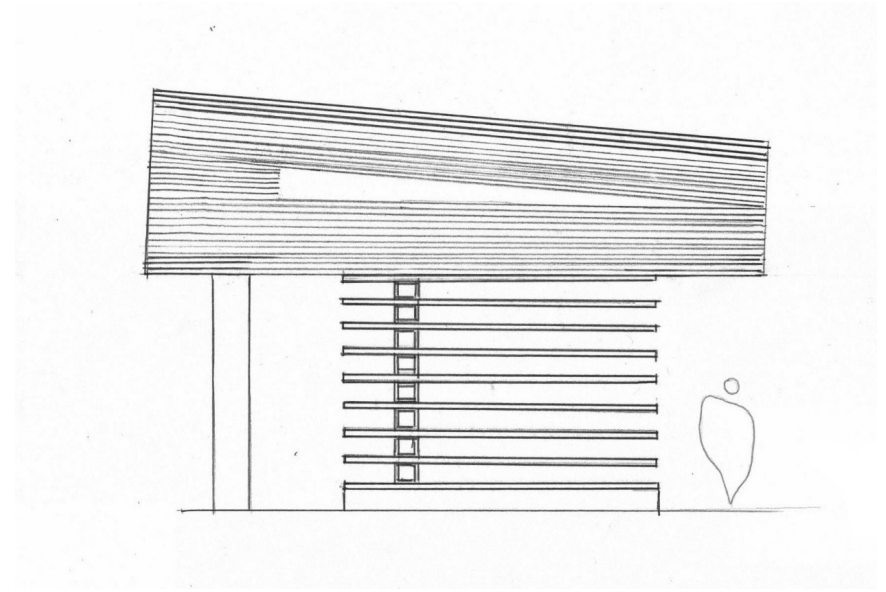
FINAL COMBINATION MODELS

03 - 80 CUBE:

TWO CHOSEN WORDS; DOMINANCE AND SUBTRACTION



LEFT ELEVATION

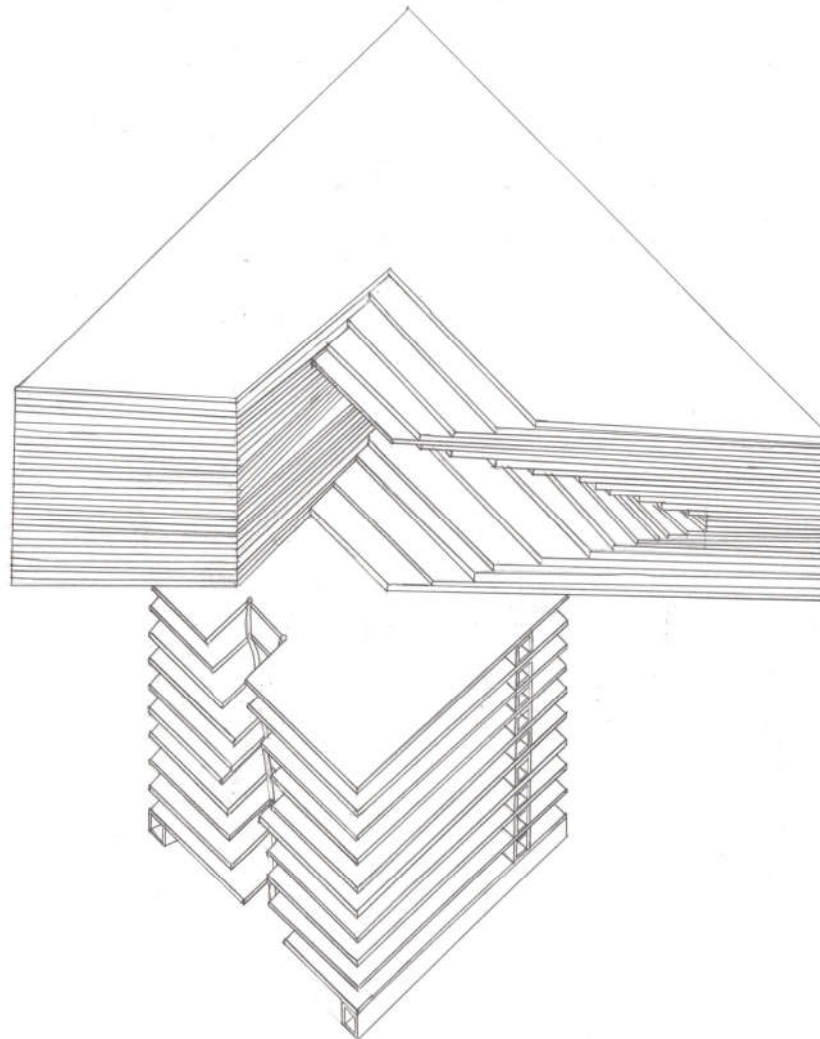


RIGHT ELEVATION

FINAL COMBINATION MODELS

03 - 80 CUBE:

TWO CHOSEN WORDS; DOMINANCE AND SUBTRACTION



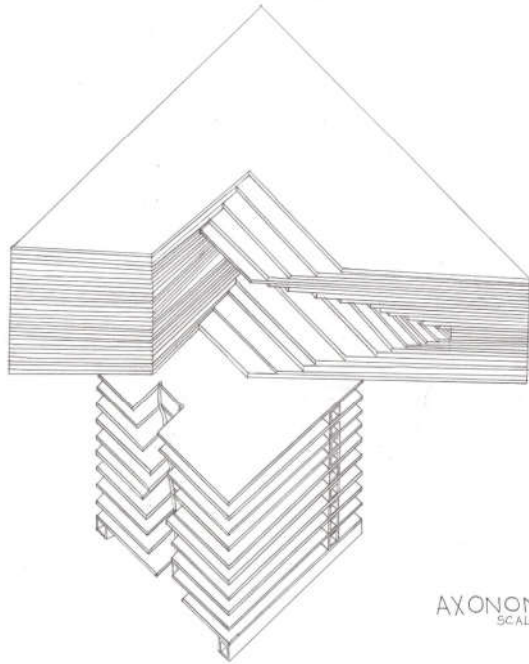
AXONOMETRIC DETAIL

FINAL COMBINATION MODELS

03 – 80 CUBE – TWO CHOSEN WORDS

PRESENTATION BOARDS

# PROJECT 3: 80 CUBE, THE 2 CHOSEN WORDS



AXONOMETRIC  
SCALE: 1:50

## DOMINANCE PROTOTYPE.



## SUBTRACTION PROTOTYPE.



## 3 COMBINED WORDS PROTOTYPE.



**DOMINANCE**: IS USED TO CREATE AN EMPHASIS OF AN OBJECT OR A FORM BY GIVING THEM A DEFINITE FOCAL POINT FOR A CAUSE OF VISUAL FOCUS AND PRIMARY ATTENTION.



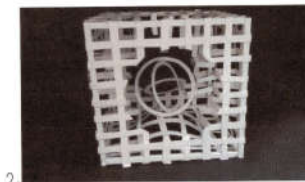
LOUVRE PYRAMIDS - FRANCE



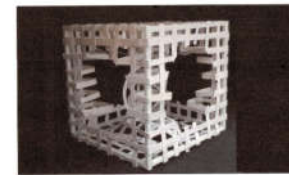
CCTV HEADQUARTERS - CHINA



30<sup>th</sup> MARY AXE (THE GHERKIN) - ENGLAND



2



**SUBTRACTION**: IS USED WHEN A PURE REGULAR FORM HAS CERTAIN PARTS REMOVED FROM VARIOUS AREAS AND THE FORMS IDENTITY IS NOT AFFECTED.



EURONEWS HEADQUARTERS - LYON



MORPHEUS HOTEL - MACAO



THE ORANGE CUBE - LYON



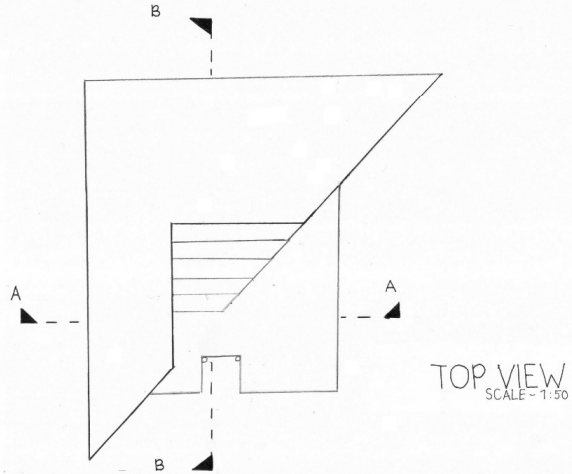
3



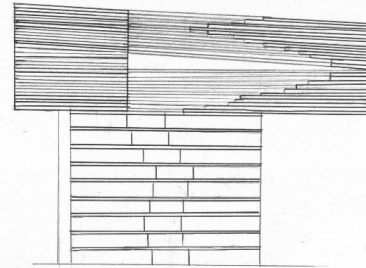
Name: Tereza Gomme  
ID: 13392147

Semester: Sept / Oct 2019  
Title: Assignment 3

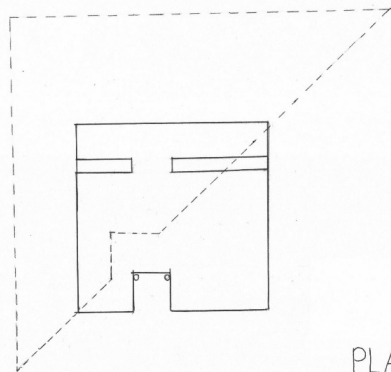
# PROJECT 3 : 80 CUBE; THE 2 CHOSEN WORDS



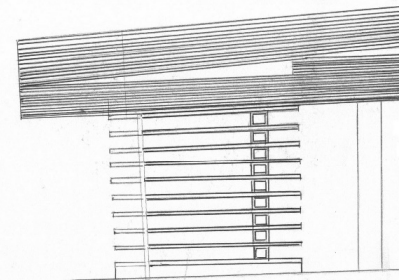
TOP VIEW  
SCALE - 1:50



SECTION A-A  
SCALE - 1:50

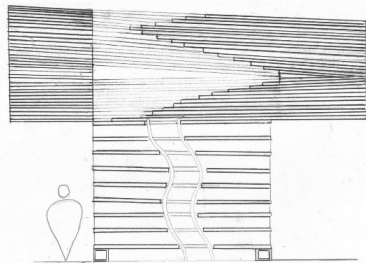


PLAN VIEW  
SCALE - 1:50

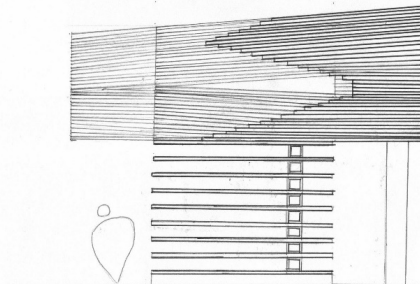


SECTION B-B  
SCALE - 1:50

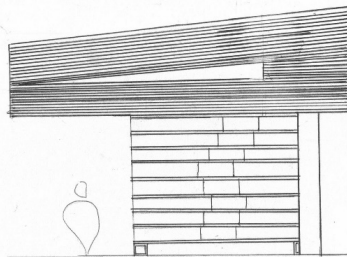
# PROJECT 3: 80 CUBE; THE 2 CHOSEN WORDS



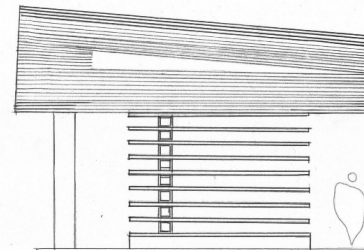
FRONT ELEVATION  
SCALE - 1:50



LEFT ELEVATION  
SCALE - 1:50



BACK ELEVATION  
SCALE - 1:50



RIGHT ELEVATION  
SCALE - 1:50

THE END