

CULTURE OF AHMEDABAD

AHMEDABAD CITY IS WELL KNOWN FOR ITS DIVERSIFIED CULTURE. PEOPLE OF AHMEDABAD ARE VERY PASSIONATE ABOUT CELEBRATING EACH AND EVERY FESTIVE OCCASION THEN BE IT NAVRATRI, THE NINE NIGHTS FESTIVAL OR THE KITE FLYING FESTIVITY. AHMEDABADIS ARE USUALLY VERY FOND OF FOOD.

A CULTURAL CENTER OR CULTURAL CENTRE IS AN ORGANIZATION, BUILDING OR COMPLEX THAT PROMOTES CULTURE AND ARTS

CULTURE THROUGH NARRATIVES

AHMEDABAD

25, FEBRUARY, 2020. NO CELEBRATION IS IN THIS STATE IS COMPLETE WITHOUT DANCE AND MUSIC. AT THE MOMENT DRAMATIC DANCE IS DEFINITELY IN VOGUE. DRAMA RAMATIC - GARBA - MOMENT OF ARMS AND LEGS REACHING OUT TO PEOPLE TO JOIN IN A CIRCLE. AUDIENCES SEEM TO YEARN FOR GUT COMMUNICATION EVEN IF THEY ARE INTROVERT WHEN IT COMES TO DANCING. PERFORMER ARE OFTEN SEEN COMFORTABLE WITH MUD WIND WATER. SPECTATOR IS POSITIONED AS OBJECT AND PERFORMER AS SUBJECT. A SPACE SET UP NATURALLY ENGAGING BOTH SUBJECT AND OBJECT AS BOUNDED BODIES WITHIN WALLS.

AS SHE REMEMBERS STORIES FROM HER MOTHER AND GRAND MOTHER OF HARAPPAN TIMES WHERE ENTRY TO THE SPACE WAS LATERAL INSTEAD OF DIRECT SO NO ONE CO SEE INSIDE. IT IS MAINLY MADE OF BRICKS AND CONSISTED OF OPEN TERRACES BY ROOMS. WOMEN AND MEN SIT AT DIFFERENT PLACES IN GROOUPS AND AT END OF DAY COME TOGETHER TO JOIN THE PIECES OF JEWELLERY INTO A CENTRAL SPACE.

FROM BANDHEJ TO MATHANI, THE TEXTILE IN GUJARAT COMES IN ALL TYPES. THE INGENOUS TEXTILE WITH SPACE AS VIBRANT AS A PIECE OF CLOTH CONSIDERING THE KIND OF HUMAN EXPERIENCE THAT MIGHT COME CONNECTING PAST AND PRESENT SHE BEGAN THE PROCESS OF MAKING, SPINNING WITH DROP SPINDLE AND THEN DYEING. REFELCTING UPON INTENSE LABOUR AND TIME REQUIRED IN CREATION OF CLOTH, IT REQUIRES A SPACE WITH EASY FLOW OF WIND, SO THAT DYES CAN DRY QUICKLY UNDER THE SUN.

KITE FLYING IS CELEBRATED TO OBSERVE THE END OF WINTER AND WELCOM SUMMER SEASON. IN AHMEDABAD THE WIND IS STRONG ENOUGH TO LIFT PLENTY OF KITES HIGH UP IN AIR AS ALL HOUSES HAVE TERRACES WHERE EVERYONE ENJOYED FKITE FLYING TOGETHER. AS THE PROCESS OF KITE MAKING IS NOT AS TIDIOUS AS JEWELLERY MAKING BUT REQUIRES PRECIESNESS IN DIMENSIONS AND LOT OF DESIGNING. AN SEMI OPEN SPACE CAN GIVE THE TRADITIONAL EXPERIANCE .

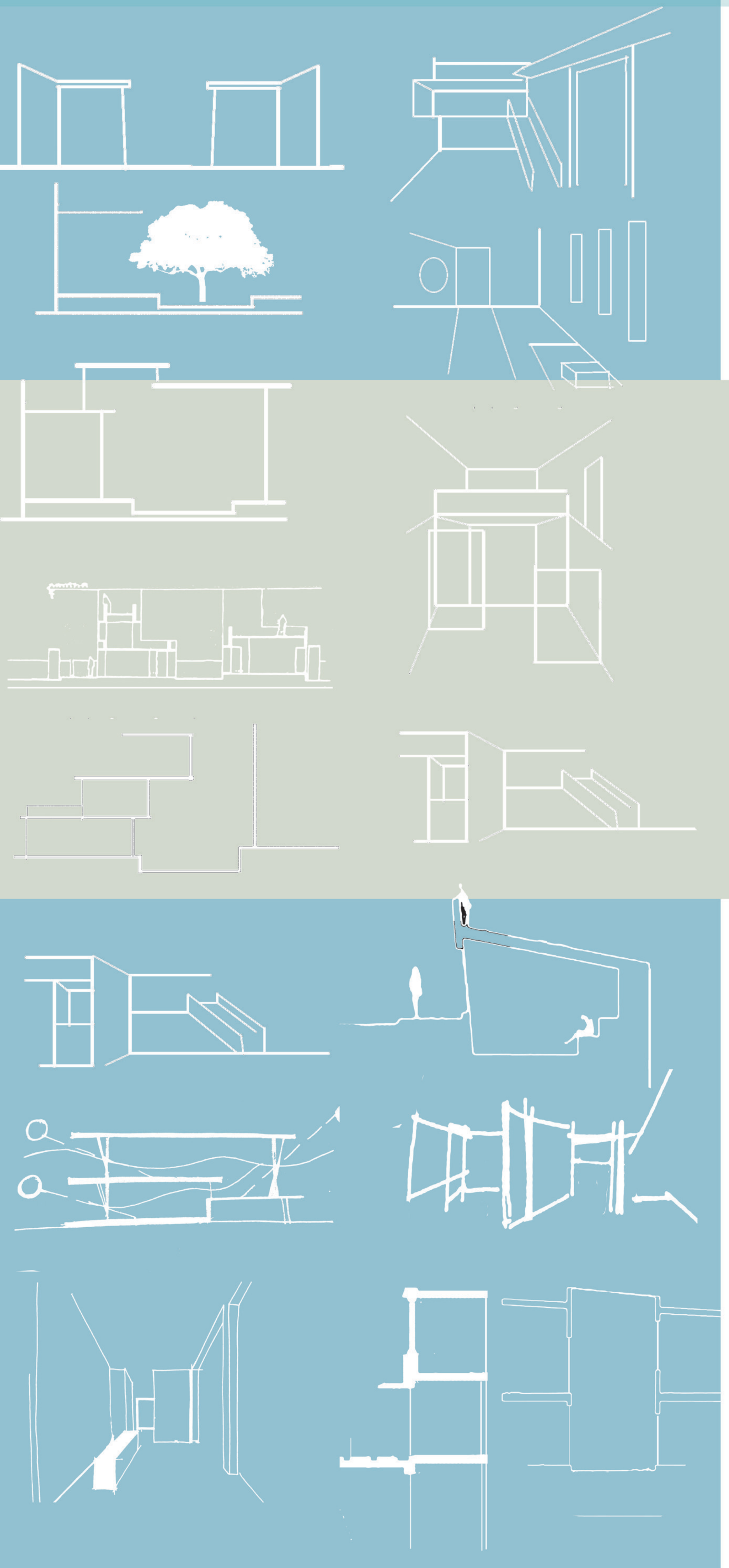
IN AHMEDABAD MULTIPURPOSE ARE OFTEN USED AS BANQUETS OR PARTY CENTRES TO CELEBRATE THE EVENT TRADITIONALLY WHILE IT IS CONSIDERED THAT THE SPACES ARE DIVED AS SEMI OPEN AND CLOSE SPACES.

WHEN IT COMES TO SHOWCASING THE TALENT IT OCCUPIES THE CENTRE STAGE SHOWING EXTROVERT GESTURE IN QUITE CELEBRATING SPACE.

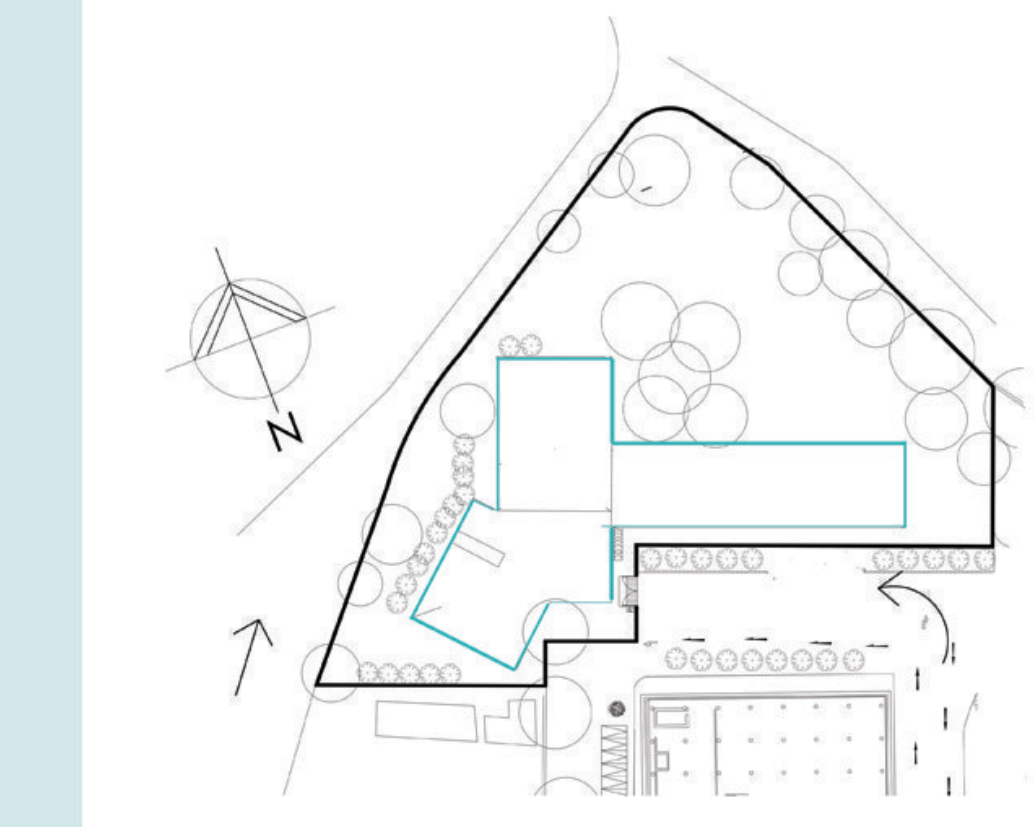
IT IS BEEN IN THEIR TRADITIONS THAT THEY MAKE GUEST COMFORTABLE AND GATES ARE QUITE HUMBLE AND WELCOMING TO THE STRUCTURE. IT IS ALSO OTHER SIDE STORY WHERE WHERE THE GATES WERE HUGE DURING MUGHAL TIME CONSIDERING EXAMPLE OF SAAT DARAWAZA.

AS OF GUJARAT RATE OF LITRACY IS HIGHEST IN AHMEDABAD IT IS UTMOST IMPORTANT FOR PEOPLE TO HAVE NOT ONLY A RECREATIONAL SPACE BUT ALSO A KNOWLEDGE HUB. LOOKING AT HISTORY AND STUDYING VARIOUS LIBRARIES IN AHMEDABAD THE AREA IS KEPT QUITE WITH MINIMAL OPENINGS BUT LETTING ENOUGH SUNLIGHT TO ENTRE

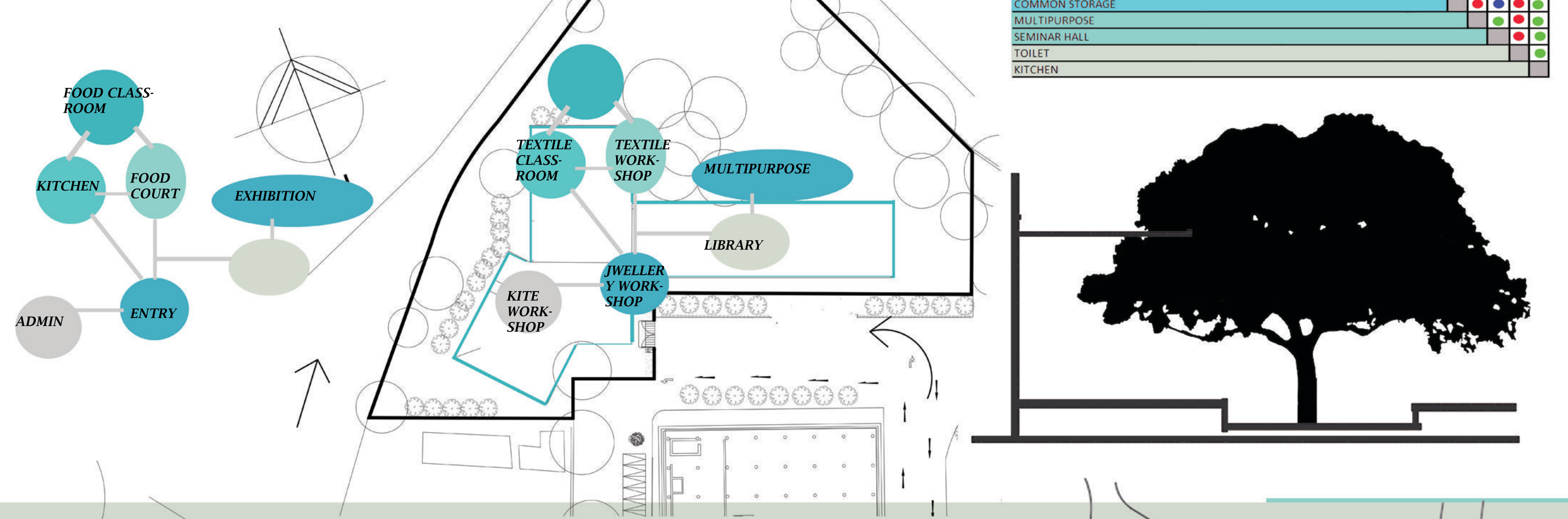
OFTEN KNOWN AS JWEL OF WESTERN INDIA GUJARAT IS ALSO KNOWN FOR IT LIP SMACKING PLATTERS . AHMEDABAD IS FAMOUS FOR FOR PROVIDING SOME OF FINEST SNAKS IN ALMOST EVERY CORNER OF BUSY LANES THAT LIE AMIDST SPECTACULAR MONUMENTS. IF THE FOOD COURT SHAPES ITSELF AS NARROW STREET LANE OR FOOD PARK AND THE WORKSHOP AREA TO BE ATTACHED TO THE COURT SPACES AS USERS CAN ENGAGE THEMSELVES IN COOKING, SERVING AS OLD TRADITIONS



IN ADDITION TO BREIF ONE MORE ACTIVITY IS ADDED TO INSTITUTIONAL BBUILDING THAT IS DANCE AND MUSIC STUDIOS WITH AN EXHIBITION SPACE FOR THE SAME . AS THE FAMOUS CULTURE OF AHMEDADBAD HAS GARBA . THE PLAN IS PLAYING WITH SOME CURVES AND CIRCLES



THE SHAPE OF THE CULTURAL CENTRE IS SET UP USING THE NARRATIVES EXPLAINING THE DIVERSITY KEEPING THE INSTITUTIONAL SPACES IN MIND. IN OTHER WORDS PLAN IS FRAGMENTED INTO DIFFERENT AXIS EXPLAINING FRAGMENTS OF AHMEDADBAD RESPECTIVELY. THE LONGATED RECTANGLE IN THE CENTRE IS THE LINES EXTRACTED AND ALIGNED FROM SANSKAR KENDRA IN THE FRONT.

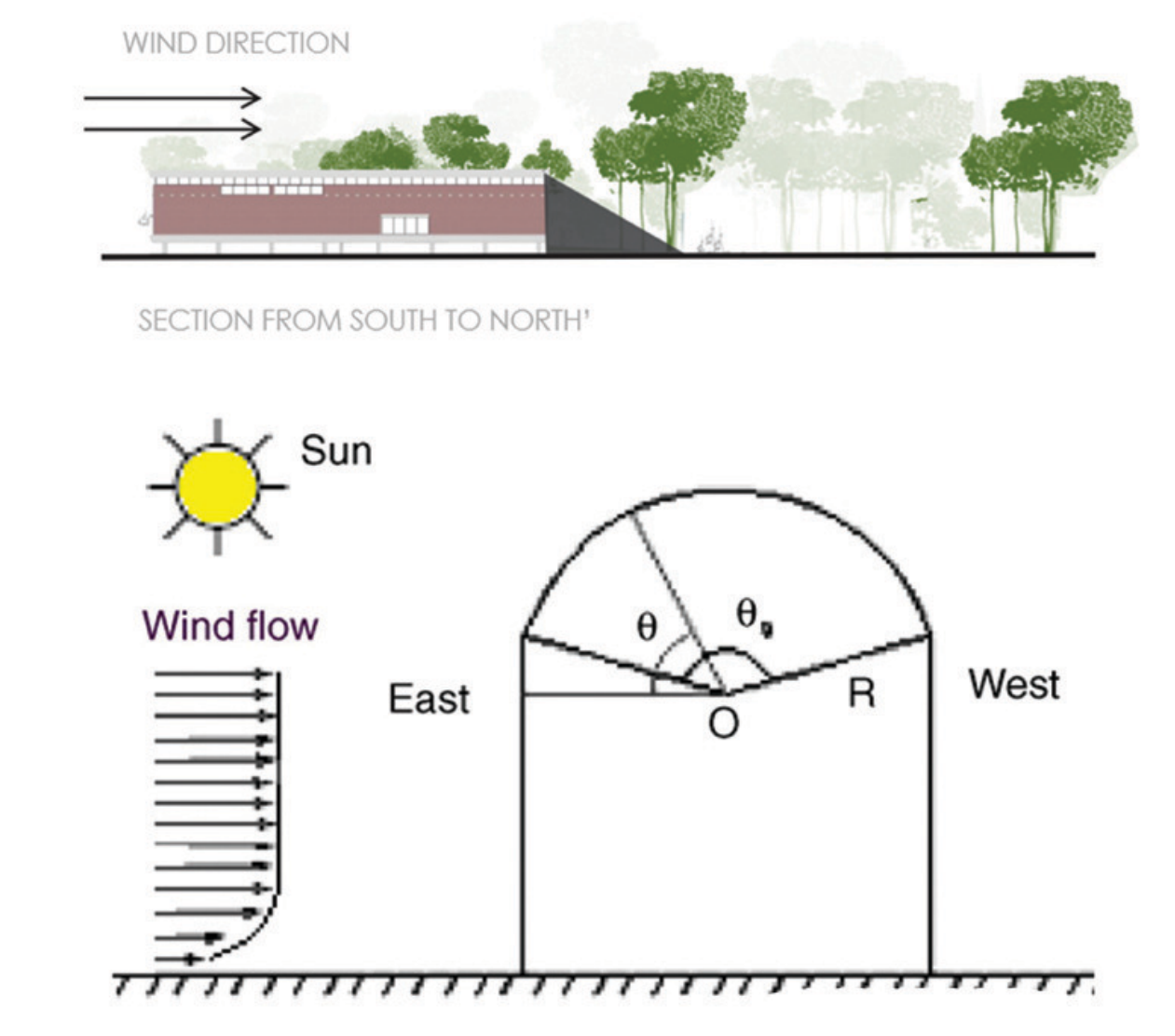
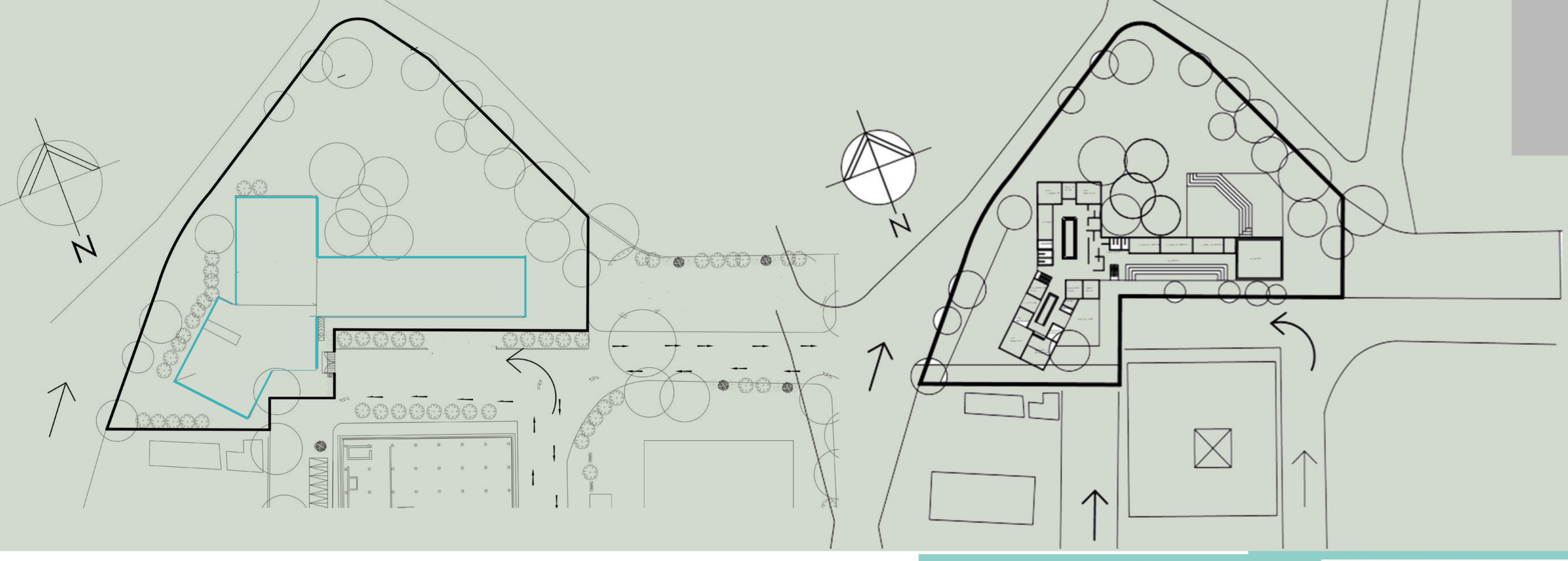


LEGENDS

- ADJACENT
- CONVENIENT
- REMOTE

CATEGORIES

- OFFICE/STAFF
- ANALYTICAL
- HEALTH AND SAFETY
- ADMINISTRATION
- SECURITY + DROP OFF
- PARKING
- KITE WORKSHOP
- TEXTILE WORKSHOP
- FOOD WORKSHOP
- HANDMADE JEWELLERY WORKSHOP
- EXHIBITION
- LIBRARY
- AMPHITHEATRE
- UTILITIES
- FOOD COURT
- COMMON STORAGE
- MULTIPURPOSE
- SEMINAR HALL
- TOILET
- KITCHEN



HAVING STRONG NEIGHBOURING CONTEXT, THE CULTURAL CENTRE IS DESIGNED IN SUCH WAY A THAT IT ALSO FOLLOWS SAME LANGUAGE AS OF SANSKAR KENDRA SO THE FRONT FACADE IS ON CIRCULAR COLUMNS S SHARED BY A SEATING ACUM EXHIBITION SPACE

A SOUTH-NORTH FACING VAULTED ROOF BOTH REDUCES THE SOLAR HEAT GAIN OF BUILDINGS IN SUMMER MONTHS AND INCREASES SOLAR HEAT GAIN IN WINTER MONTHS COMPARED TO ONE WHICH FACES EAST-WEST

USE OF BULLSEYE ARCH FOR THE FACADE ALIGNED WITH SPACES LIKE MULTIPURPOSE AND LIBRARY MAKES IT QUITE HANGOUT SPACE

DANCE AND MUSIC STUDIO PROVIDED BY A SHADE IN FRONT OF OPEN SPACES SURROUNDED BY TREES WILL GIVE INFORMAL GATHERING SPACE

