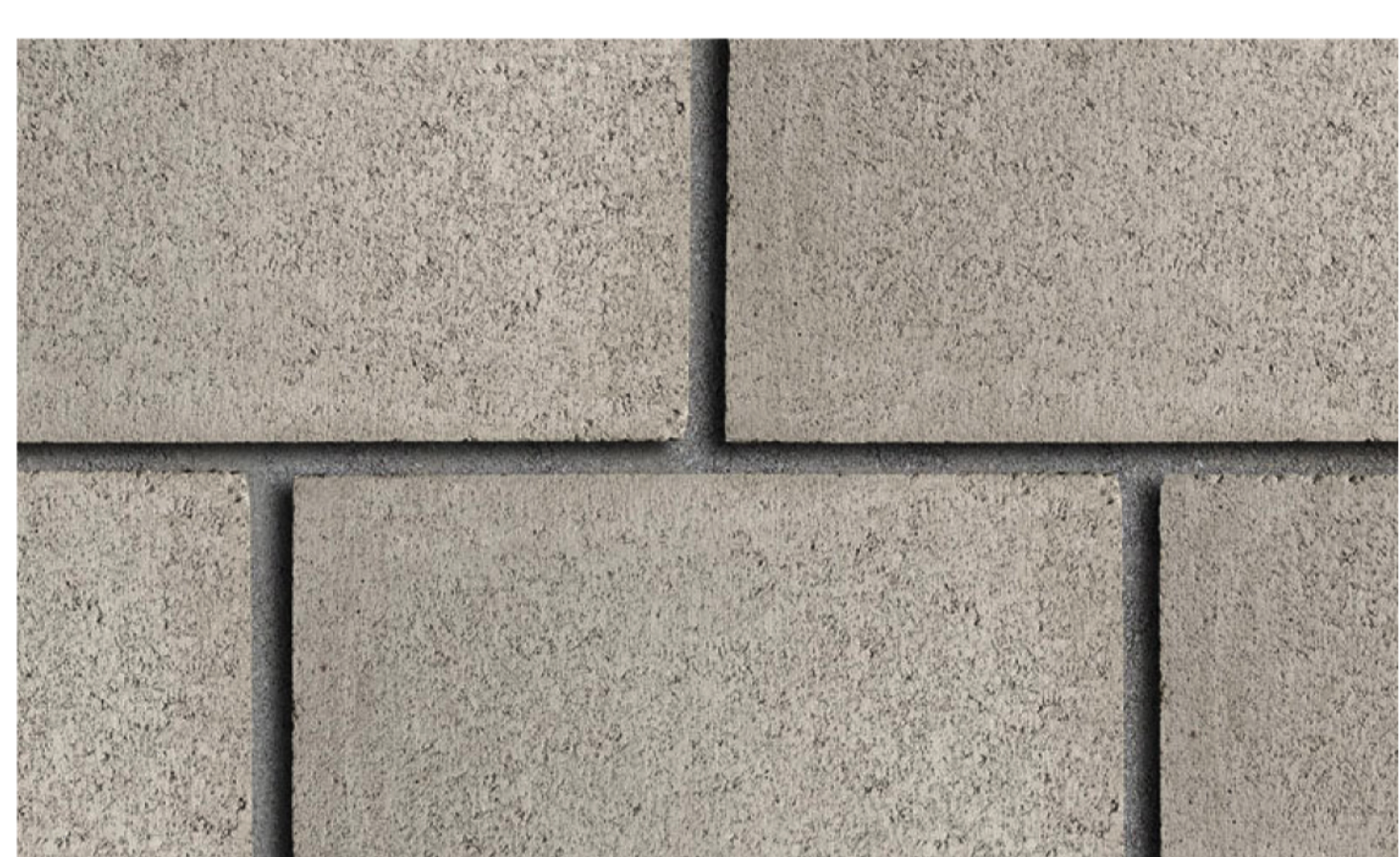
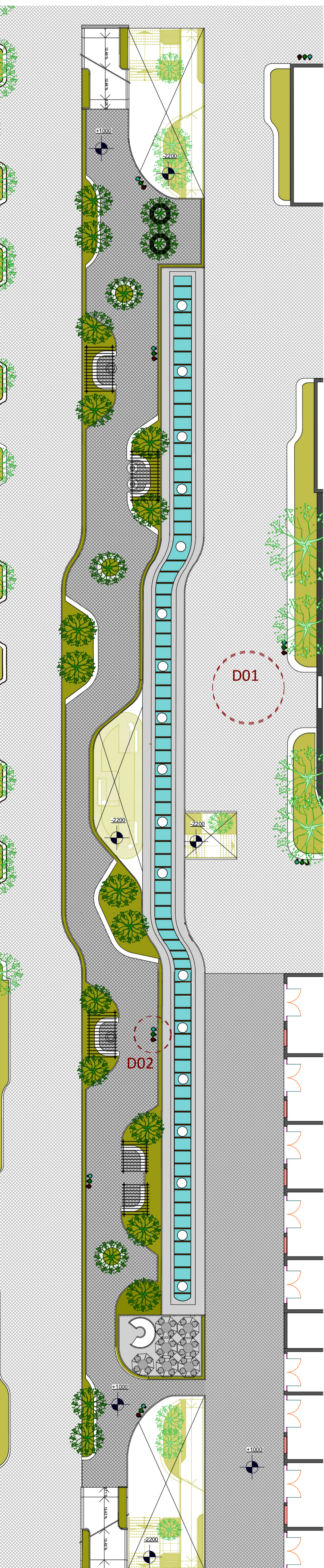


# AGA KHAN WALK REVITALIZATION PROJECT ENVIRONMENTAL DESIGN

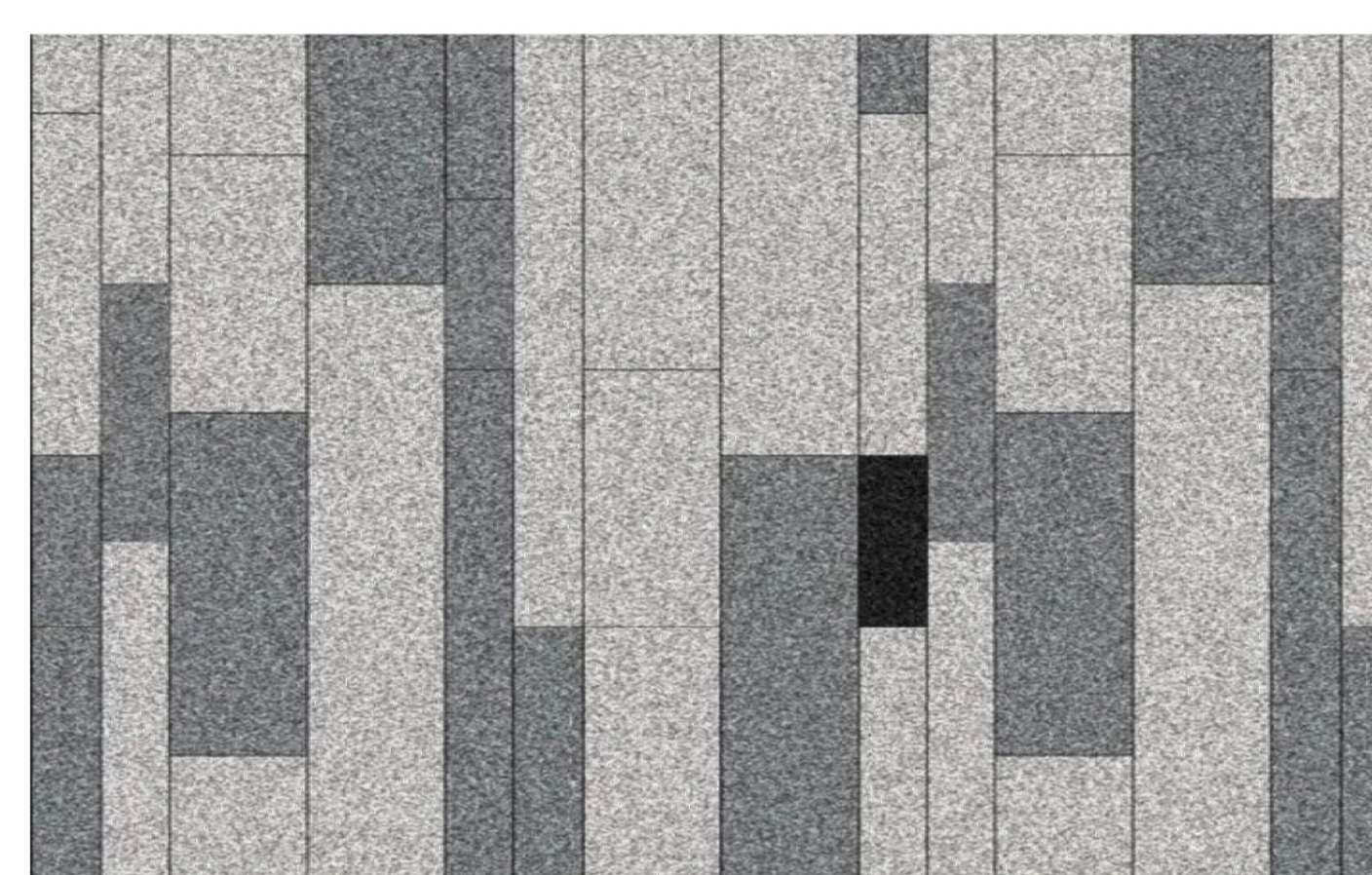


## DETAIL 01: USE OF LOCALLY AVAILABLE MATERIALS TO LOWER CARBON FOOTPRINT

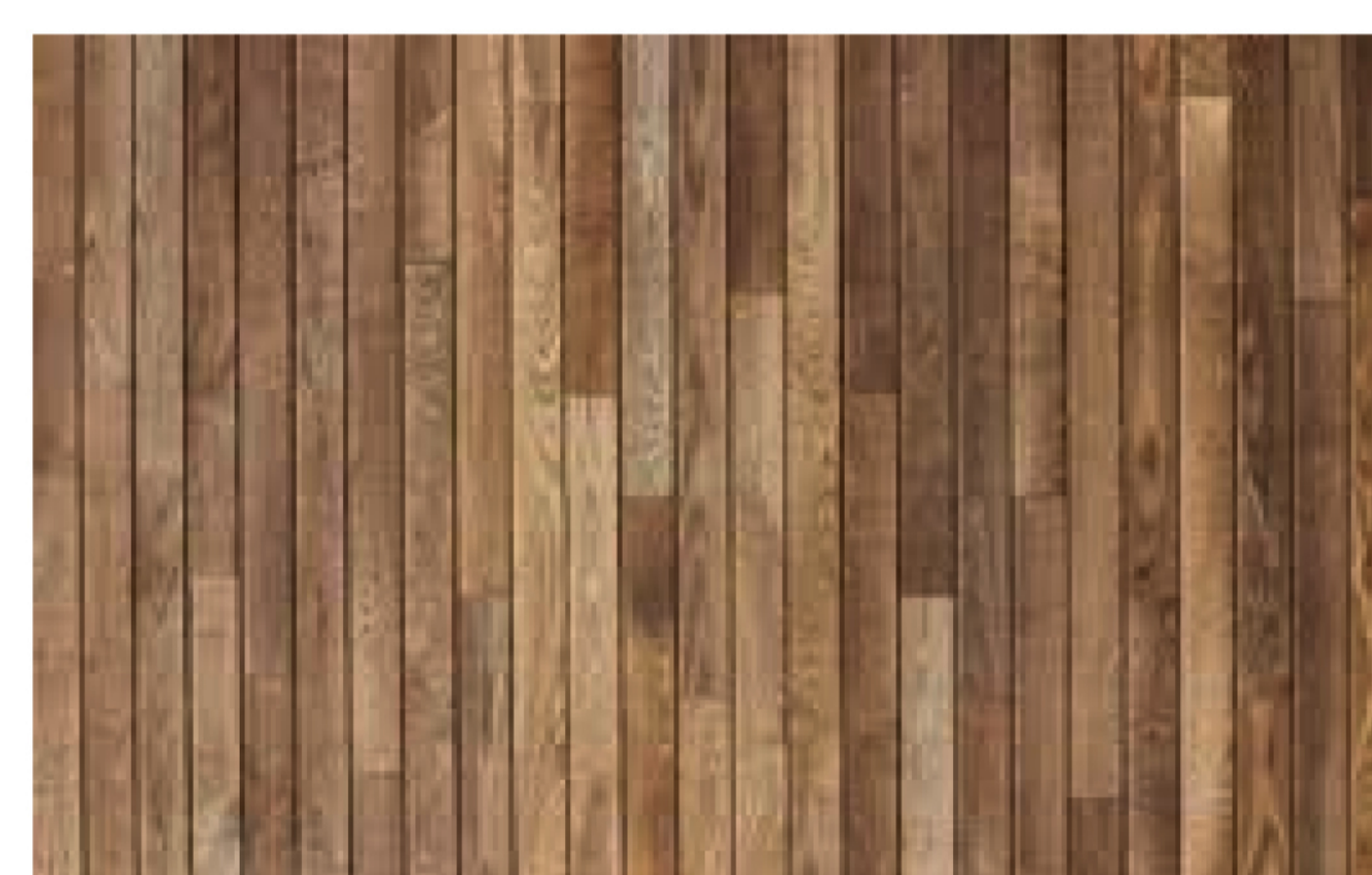
The materials used are concrete, njiru bluestone and timber both that can be sourced a few kilometres from the site hence are very suitable for the context. Use of locally sourced materials from a nearby manufacturing site, helps make products greener by cutting down on transportation distances, which lowers greenhouse gas emissions. Reflective smooth colored render dominates the material palette this keeps off the scorching diurnal heat/solar radiation.



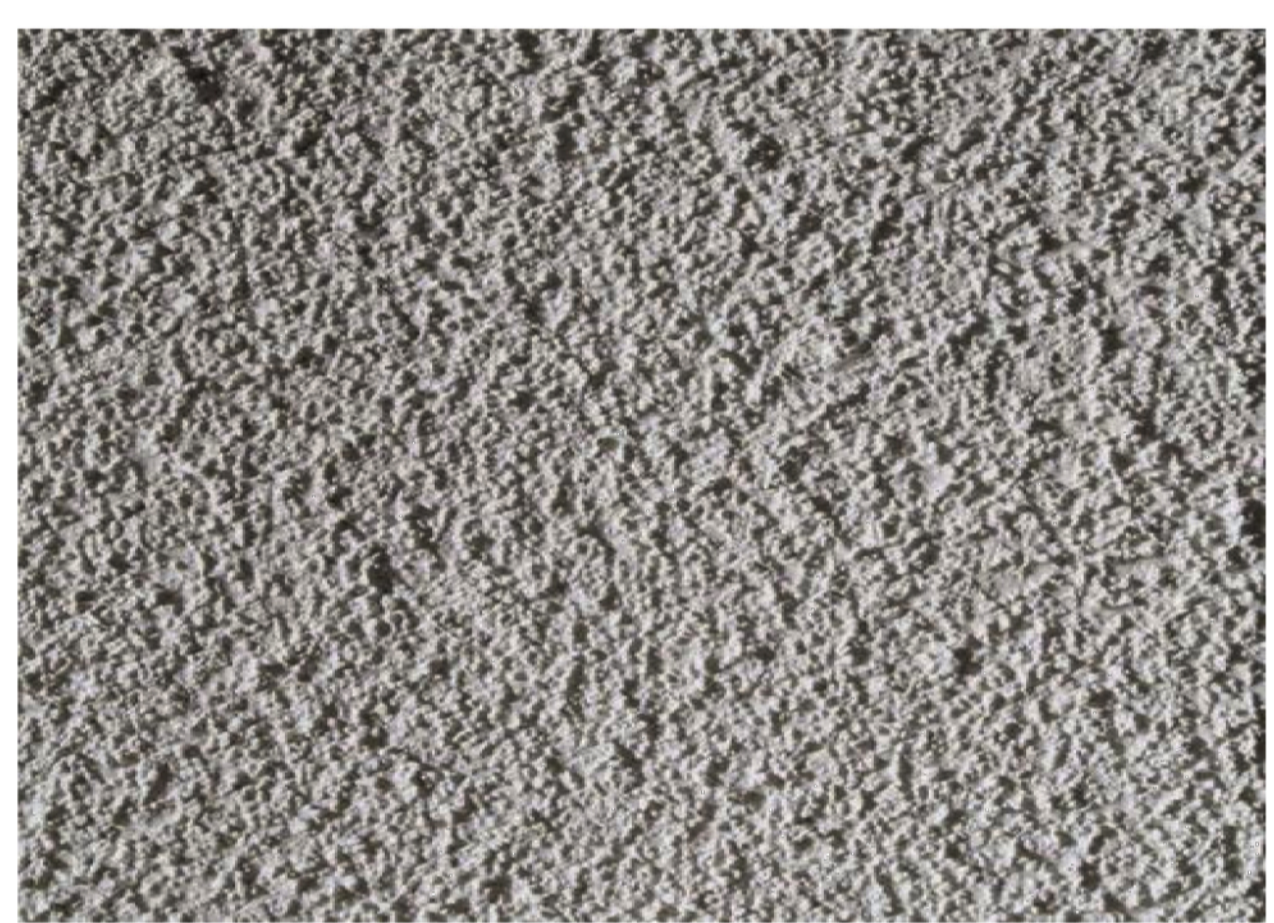
INTERIOR CONCRETE BLOCK WALL



PRECAST CONCRETE PAVEMENT BLOCKS



INTERIOR CONCRETE BLOCK WALL



TEXTURE CONCRETE WALL FINISH



NJIRU BLUESTONE PAVER



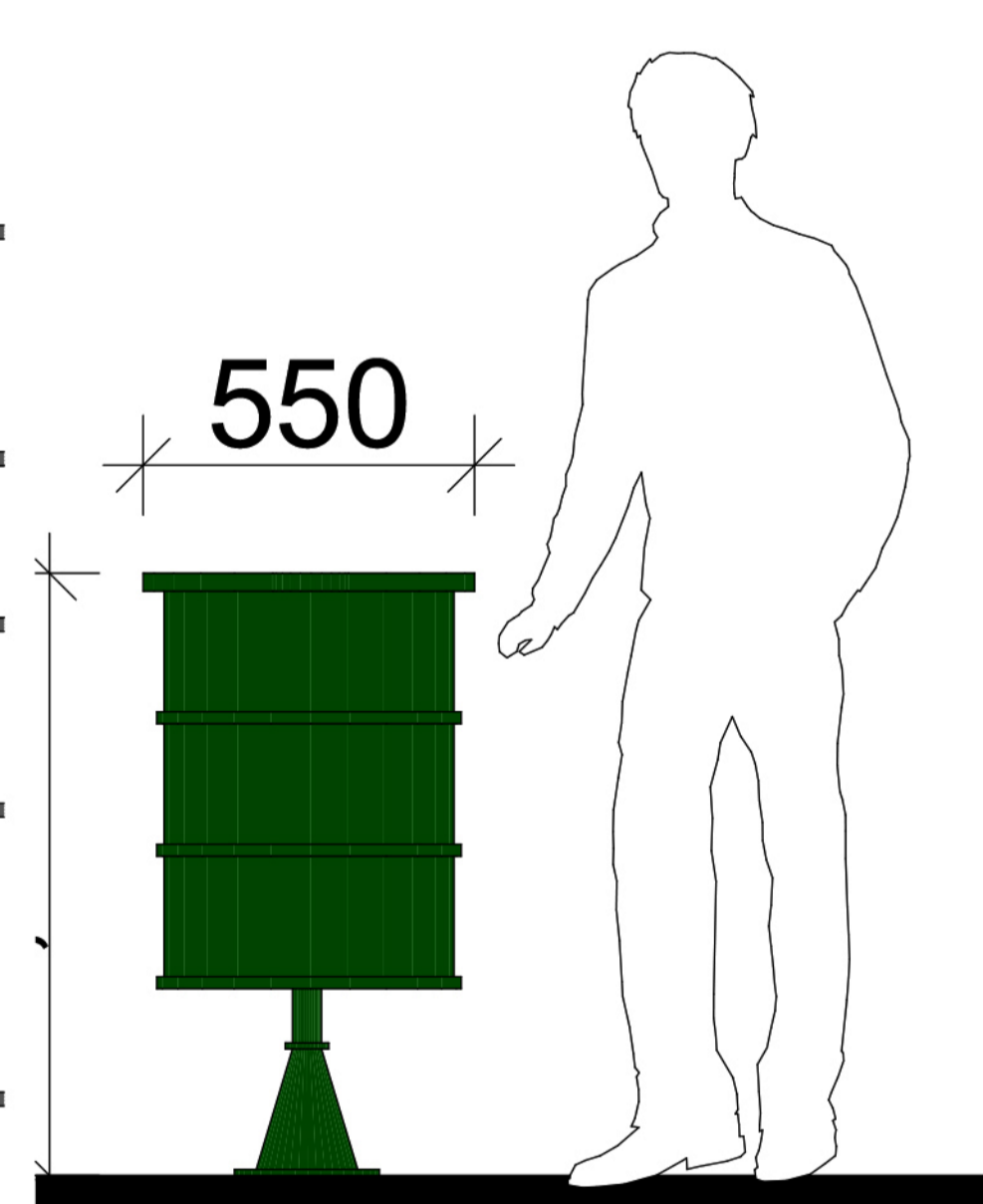
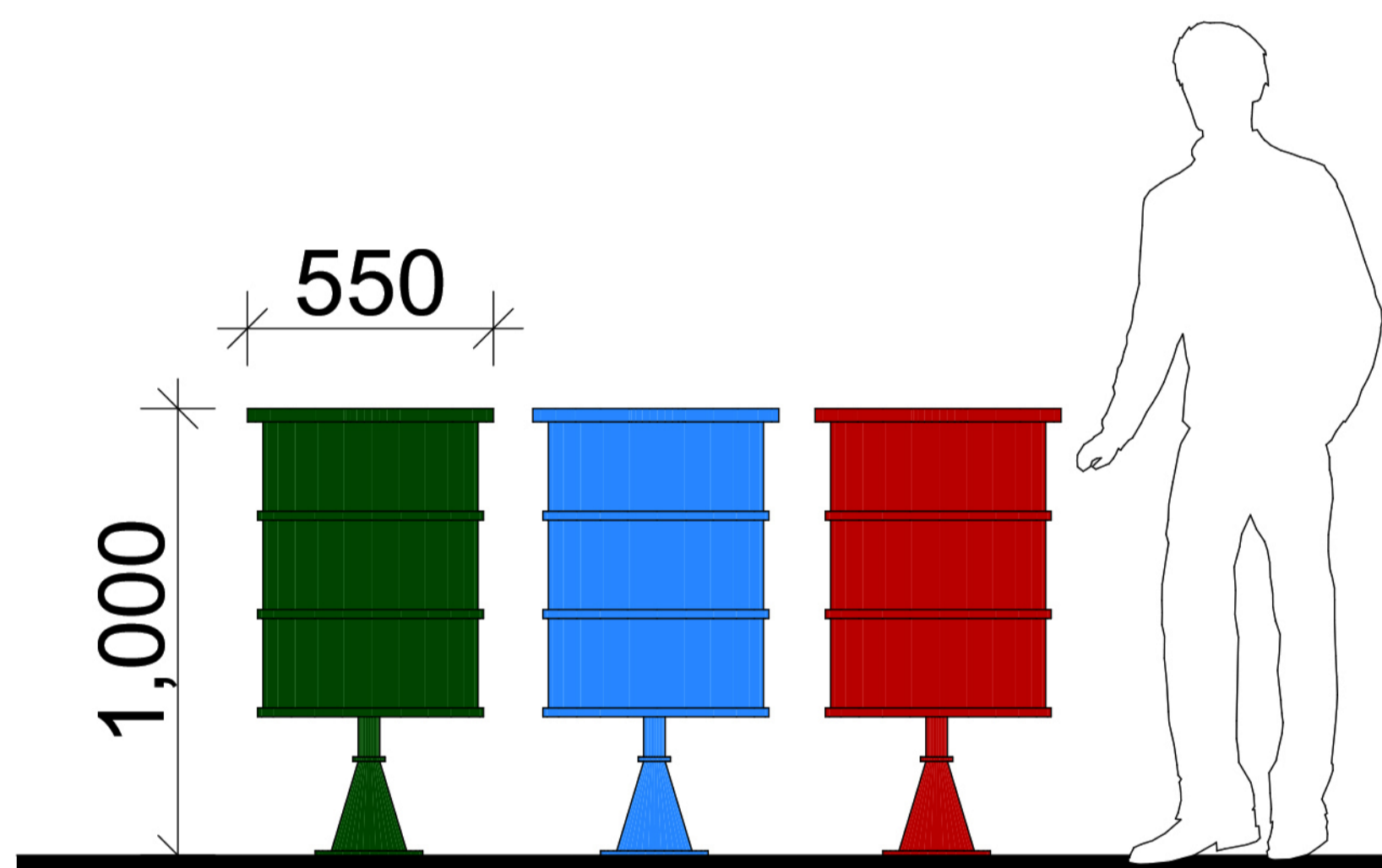
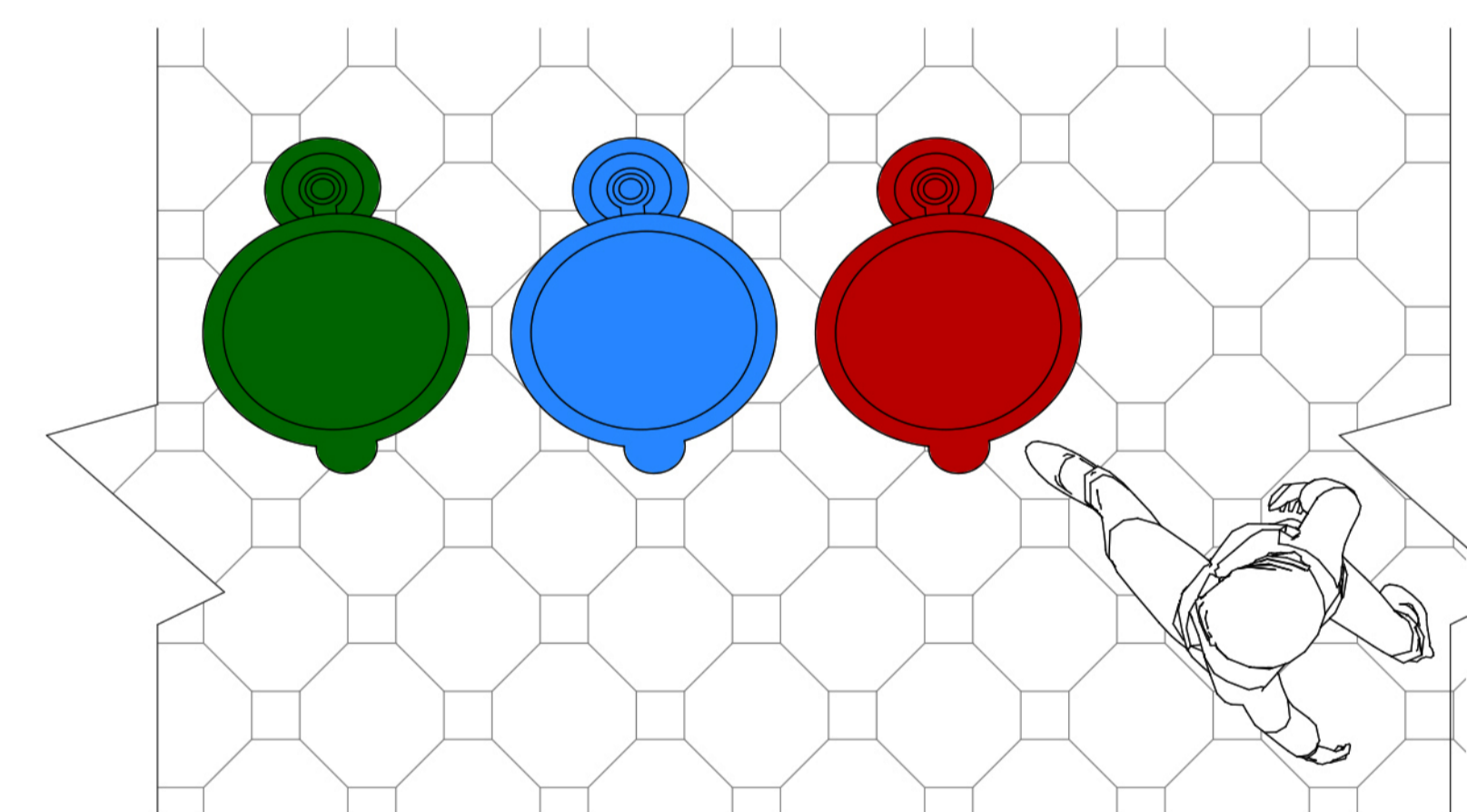
CONCRETE WALL PANELS

## DETAIL 02: WASTE MANAGEMENT THROUGH USE OF RECYCLING DUSTBINS

### WASTE RECYCLING DUSTBINS

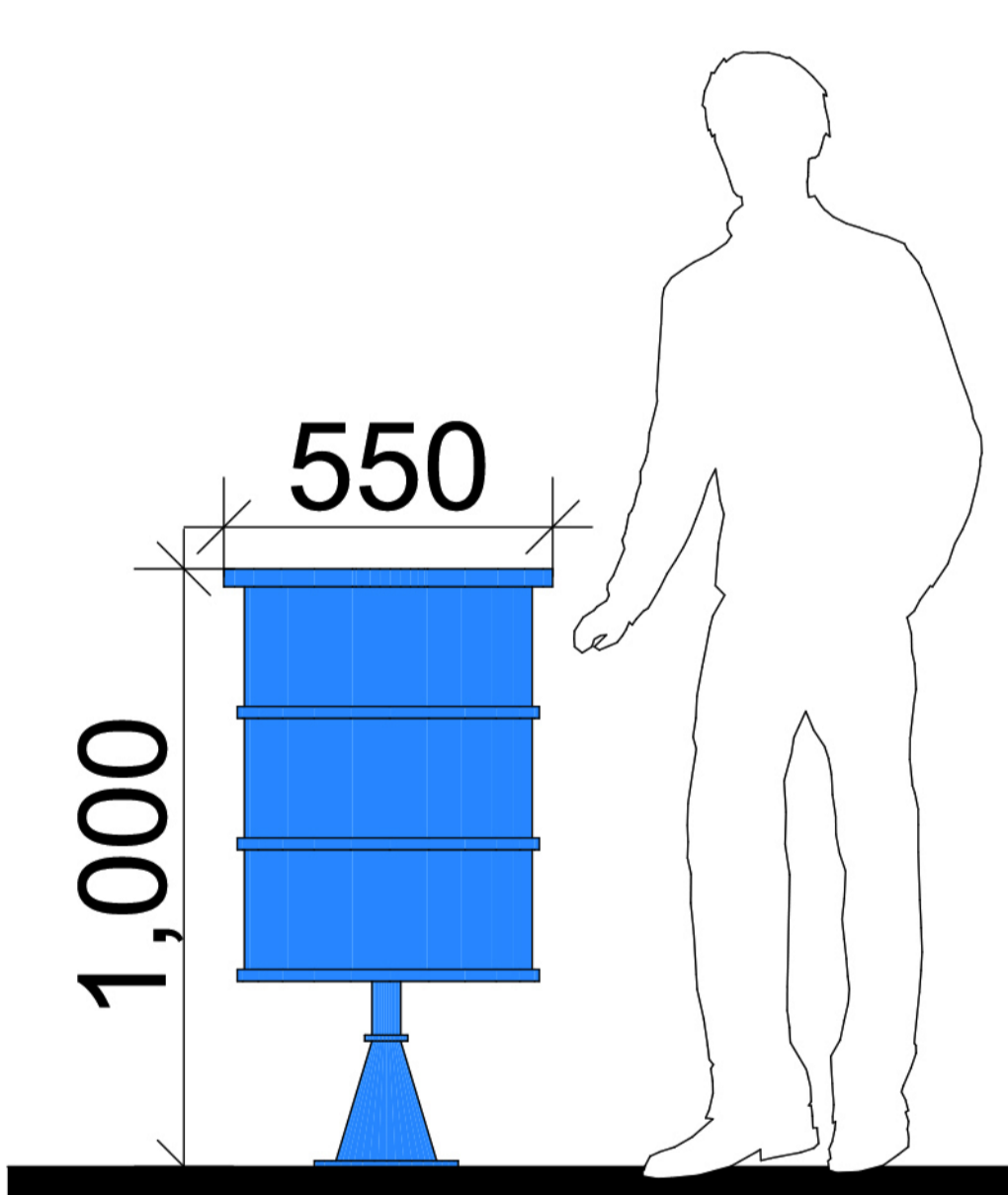
The dustbins will be have different colours to help the pedestrians identify their uses.

This will help in sorting the waste to ease the recycling of waste process



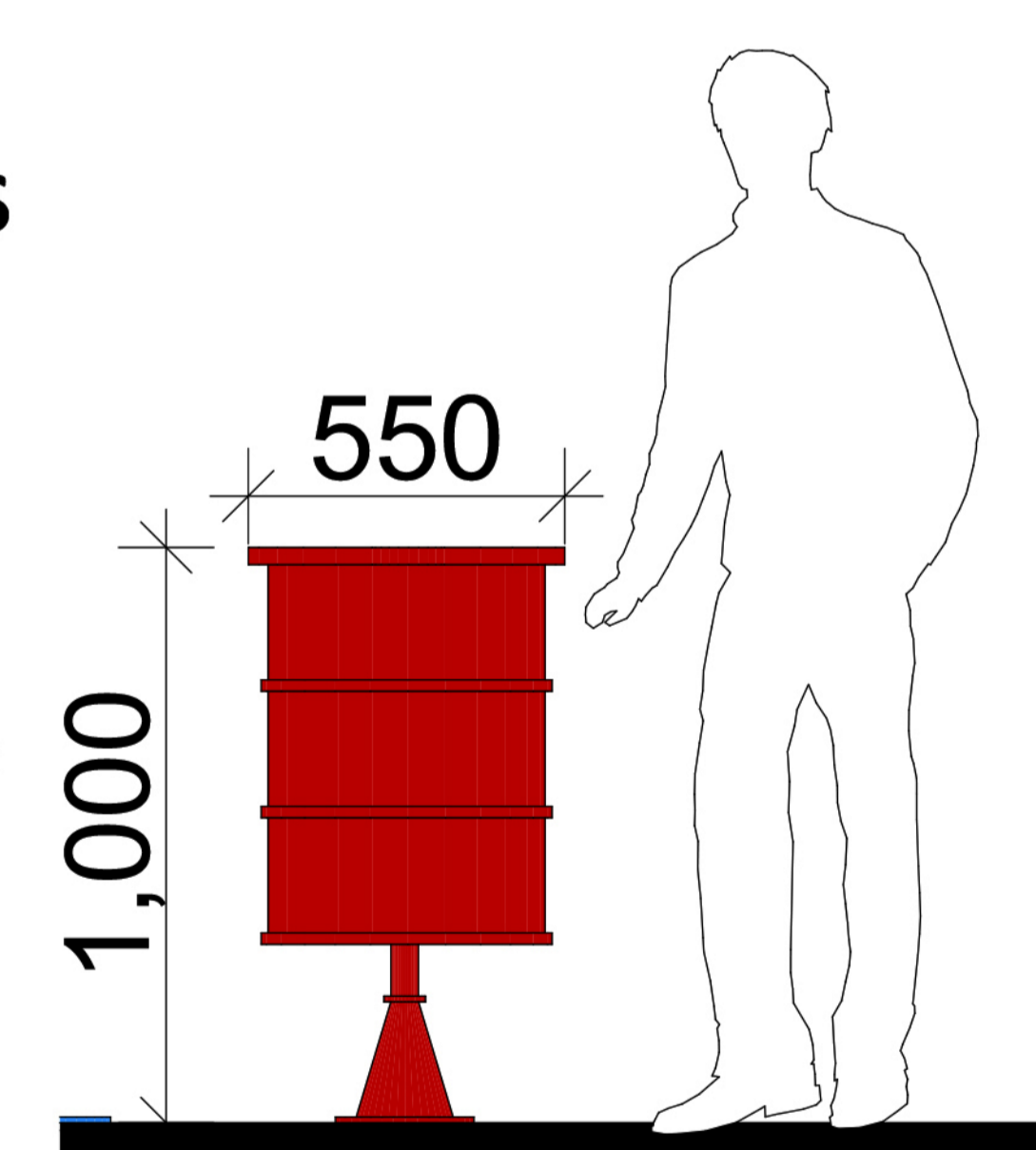
### GREEN DUSTBINS

Used for collecting kitchen waste plant or animal waste or biodegradable waste.



### BLUE DUSTBINS

Used for collecting non-biodegradable waste that can be recycled like plastic, metal and glass objects.

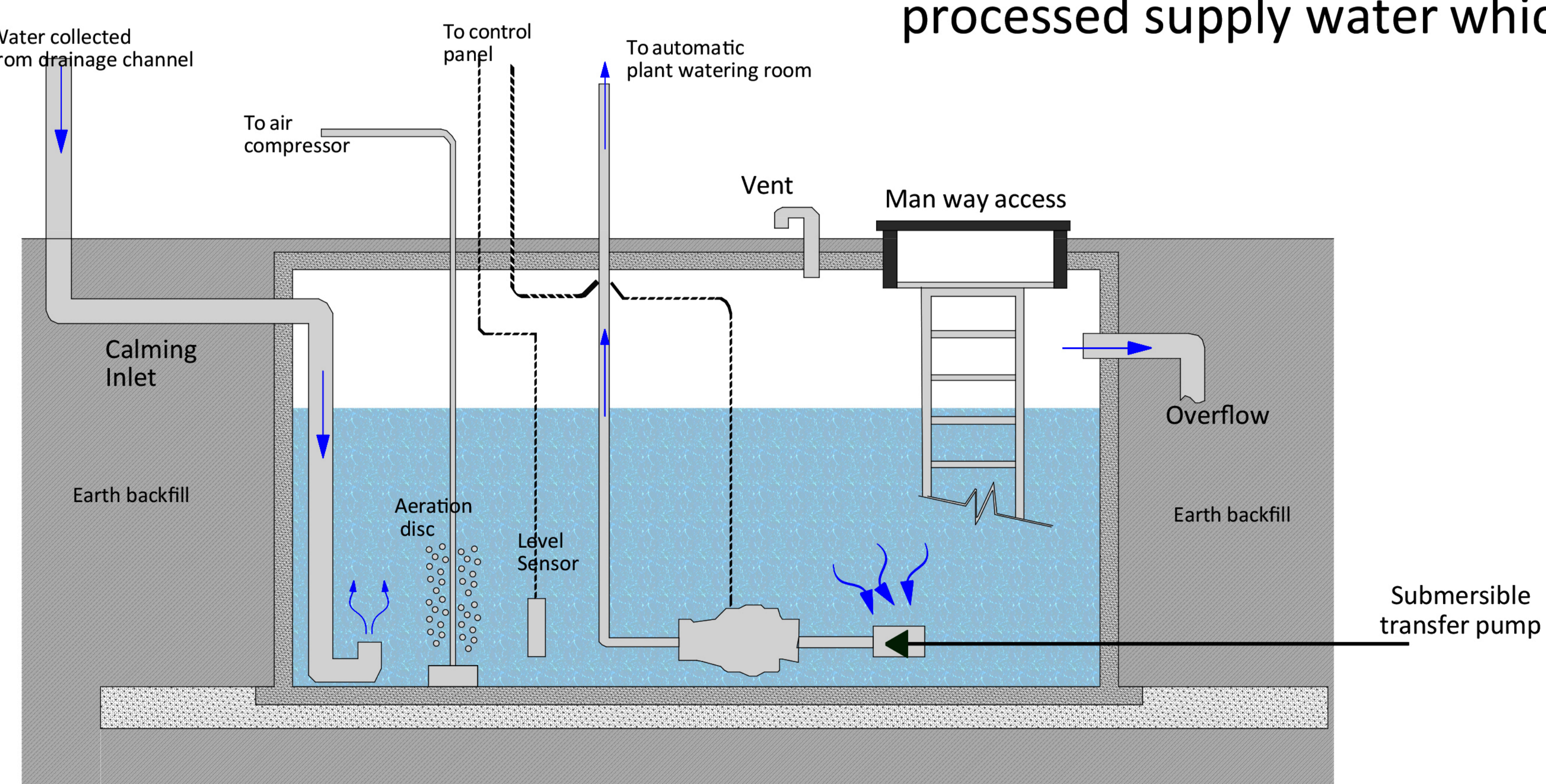


### RED DUSTBINS

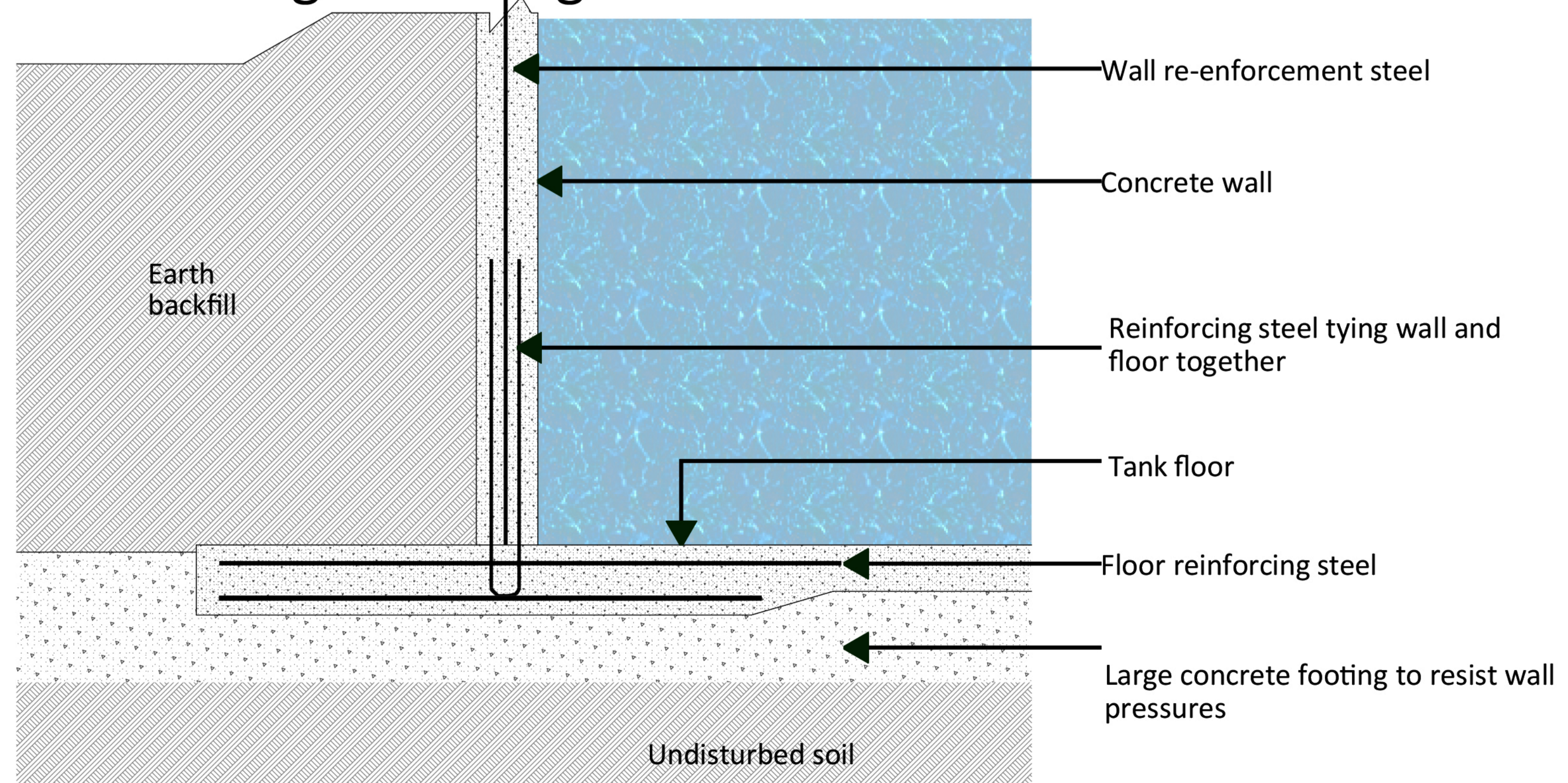
Used for general household rubbish that cannot go in the recycling or organics bins, including: Soft plastics (eg. plastic wrap, cling film, newspaper sleeves, plastic bags, bin liners)

## RAIN WATER HARVESTING (RWH)

Sustainable use of water will maintain a balance between its demand and supply in my site. Rainwater harvesting (RWH) is the most traditional and sustainable method. The water collected from the drainage channels will be pumped into the underground water tank and will be used to water the soft landscaping elements in my site through the use of automatic system. This will reduce the pressure on processed supply water which enhances the green living.



UNDERGROUND RAINWATER TANK



UNDERGROUND RAINWATER TANK REINFORCMENT DETAIL