

AGA KHAN WALK REVITALIZATION PROJECT SECTOR THREE

DESIGN OBJECTIVES

The buildings along are mostly banks headquarters, with commercial activities only at Jeevan and N.H.C buildings. In response to the formal nature of activities here, formal activities have been incorporated in my development.

1. ENHANCEMENT OF STREET-BUILDING INTERACTION

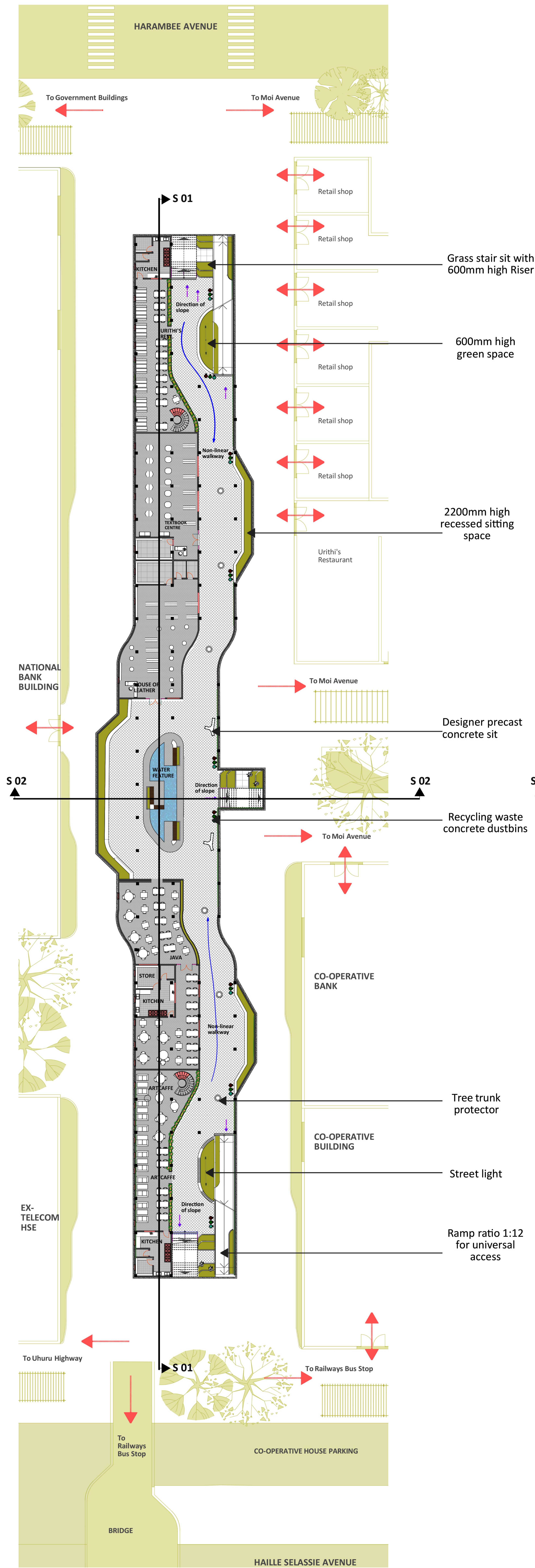
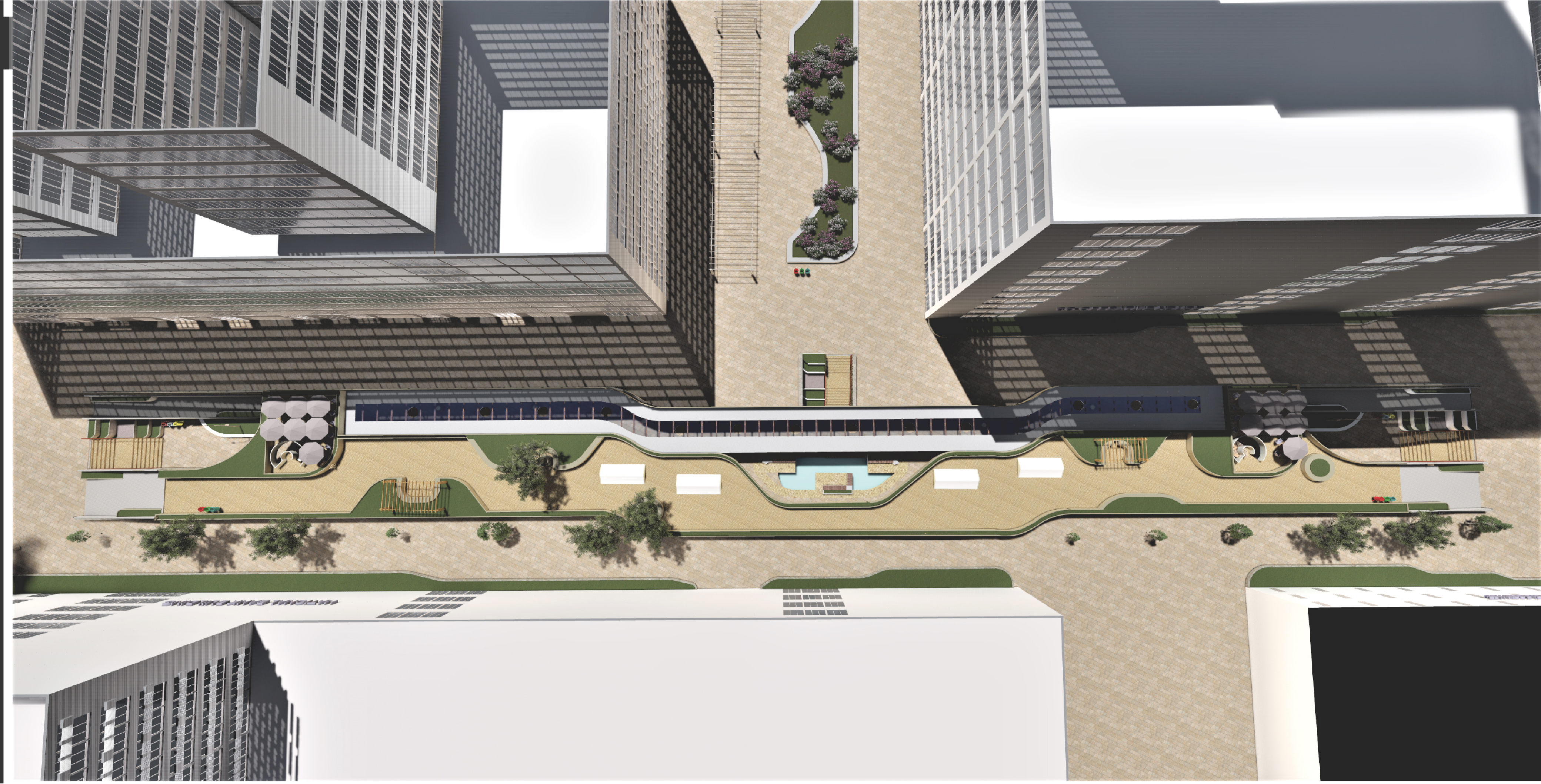
Buildings have little or no opening towards the walk. In response, dead facades have been converted into green walls and green spaces used to replace grills along National Bank Building.

2. RESPONSE TO FORMAL NATURE OF THE SECTOR

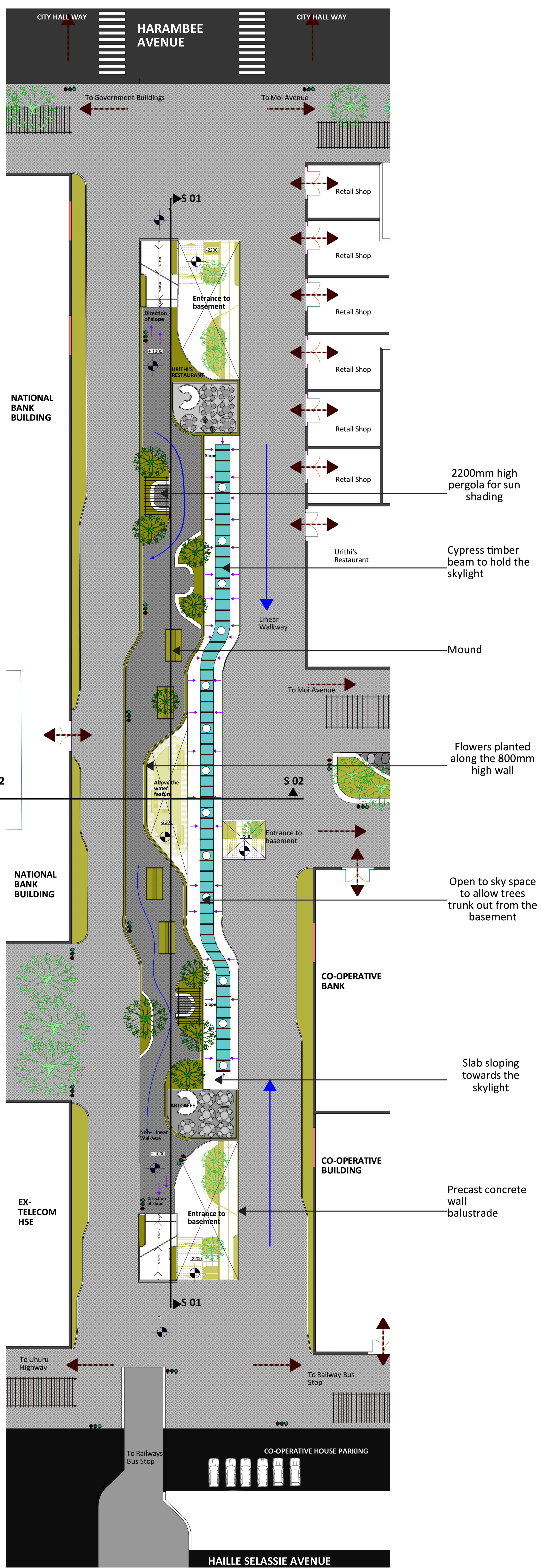
In response to the formal nature of the sector, chain retail shops and restaurants have been incorporated in my design.

3. RESPONSE TO NODES

A bridge has been designed to connect the development to Railway Bus Stop. Entrance to the development have been designed at all the three nodes



SECTOR THREE BASEMENT PLAN 1:200



SECTOR THREE UPPER GROUND FLOOR PLAN 1:200