

AGA KHAN WALK REVITALIZATION PROJECT

PROJECT SECTOR TWO

DESIGN OBJECTIVES

RESPONSE TO VIEW OF K.I.C.C

Sits on the roof level are designed to face K.I.C.C and other iconic government building.

RESPONSE TO SKIRTING ACTIVITY ON WEEKENDS

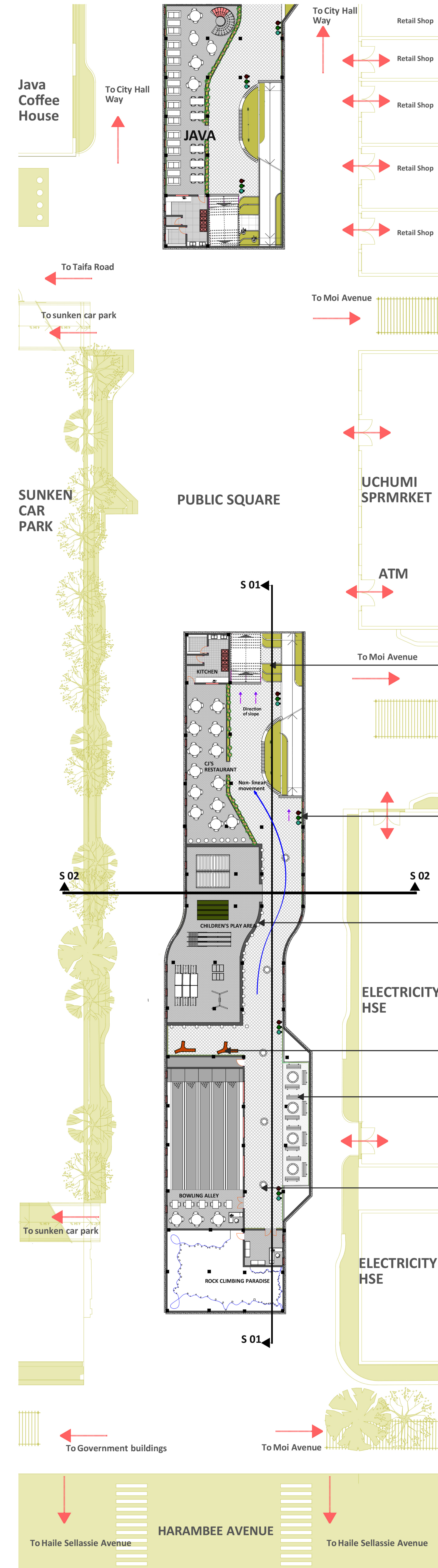
The sector is made up of various recreational spaces like rock climbing and bowling to compliment the activity.

INTRODUCTION OF ACTIVITIES FOR ALL AGES

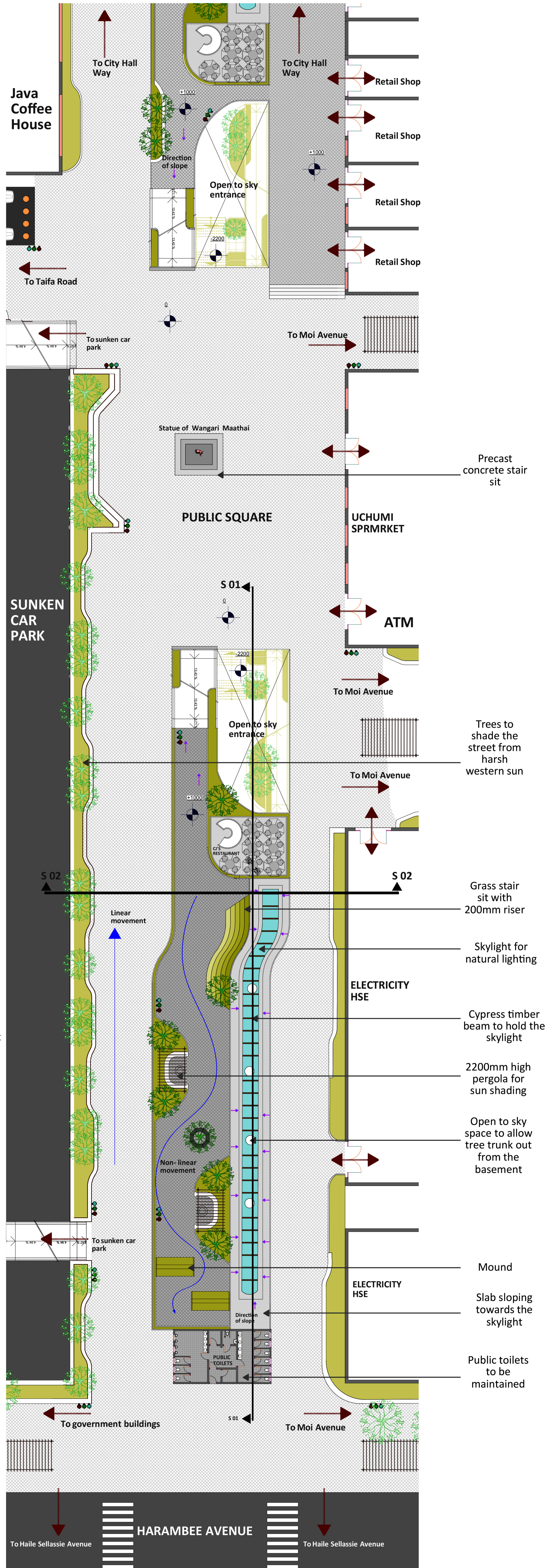
The recreational spaces are for children, (children's play area), adults and youths, (Bowling and rock climbing). Parents have a restaurant design to have views of their children's playing area.

SUNSHADING FROM WESTERN SUN

Thick tree vegetation has been planted along the sitting slab next to the sunken car park to shade the walk from the western sun.



SECTOR TWO BASEMENT PLAN 1:200



SECTOR TWO UPPER GROUND LEVEL PLAN 1:200