

AGA KHAN WALK REVITALIZATION PROJECT CONCEPT DEVELOPMENT

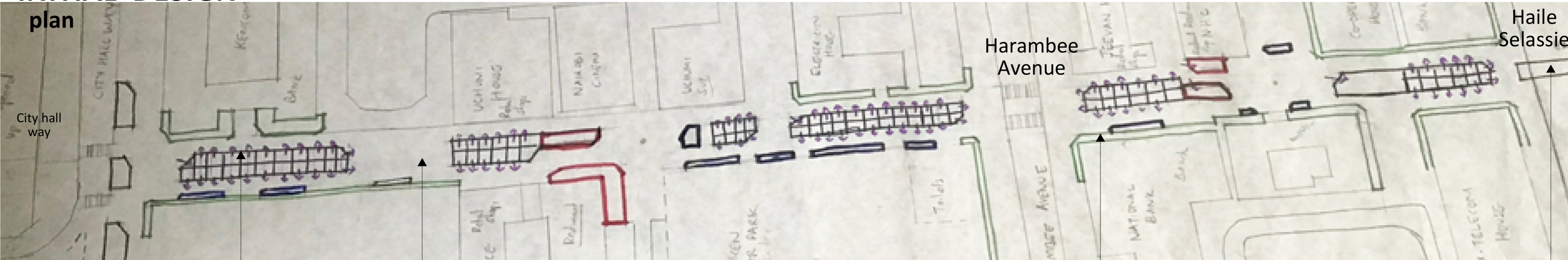
The design was informed by the site analysis. From there, I identified the current activities along the site and have created zones/ sectors from the existing activities in order to enhance them by spilling them over to the street. For instance, in front of Re-insurance, I have shopping and dining spaces to compliment the activities in the building. Next to the sunken car park, sector two, that is normally used for skirting, I have introduced recreational spaces for all age groups. The area between Harambee Avenue and Haile Selassie, sector three, I have introduced formal spaces to compliment the formal nature of the sector.

The design aims at improving the pedestrians experience by incorporating separate activities, circulation spaces and the pedestrians sitting areas in my development.

The final decision to go underground was the result of not wanting to interfere with the site visual lines. The building will only be 1200mm above the ground level. The roof is accessible with variety of resting spaces for pedestrians.

To enhance the buildings-street interaction, I have replaced the existing grills with green spaces that will maintain the same level of privacy within interfering with the views into and out of the street.

INITIAL DESIGN

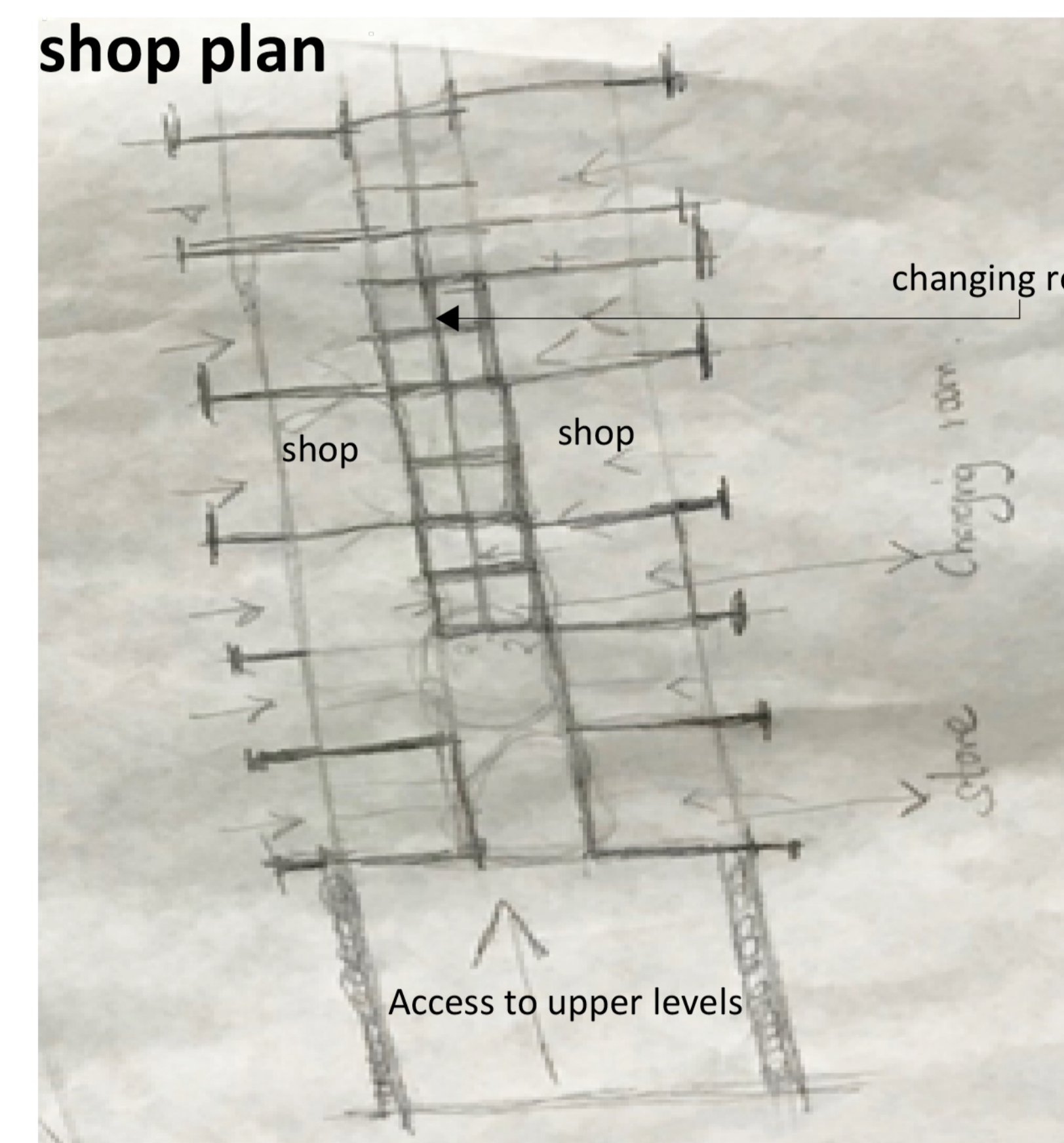
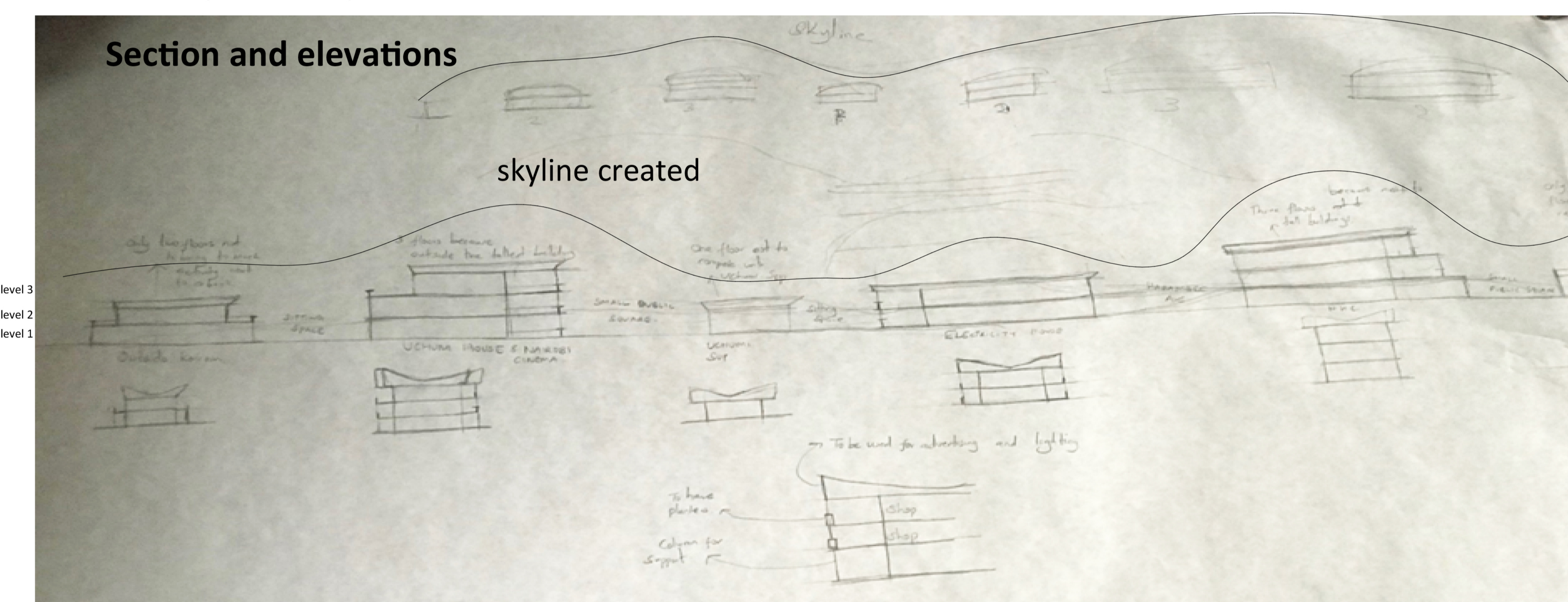


The development on the current green spaces footprint

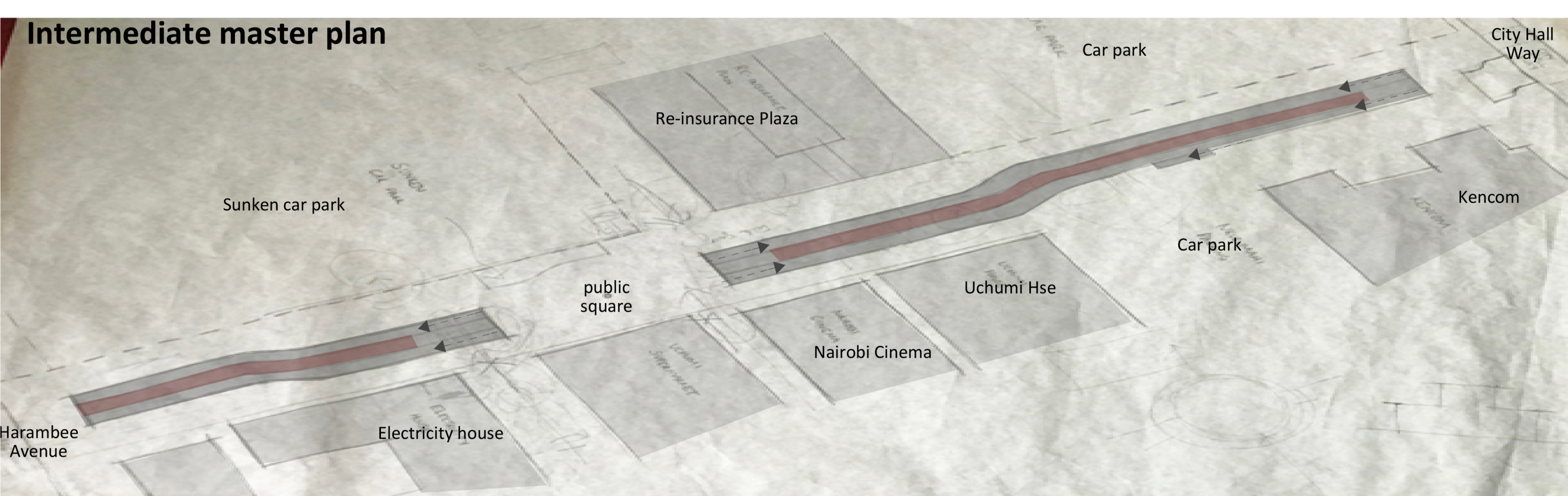
The existing circulation spaces between the green spaces maintained

Existing grills replaced with green spaces

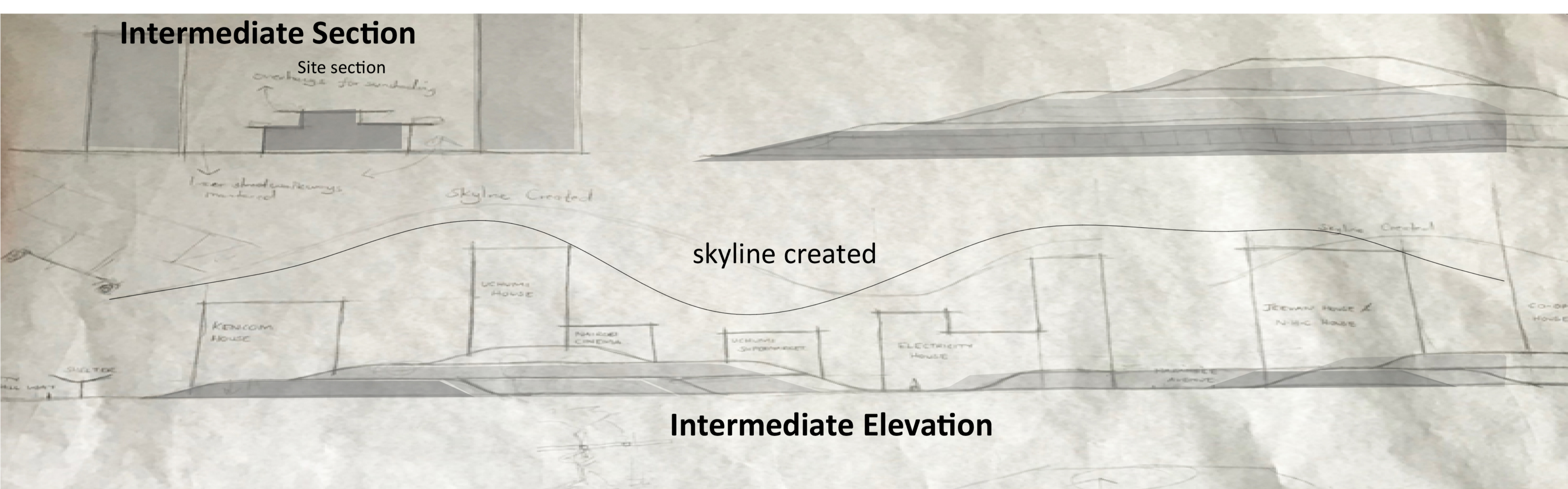
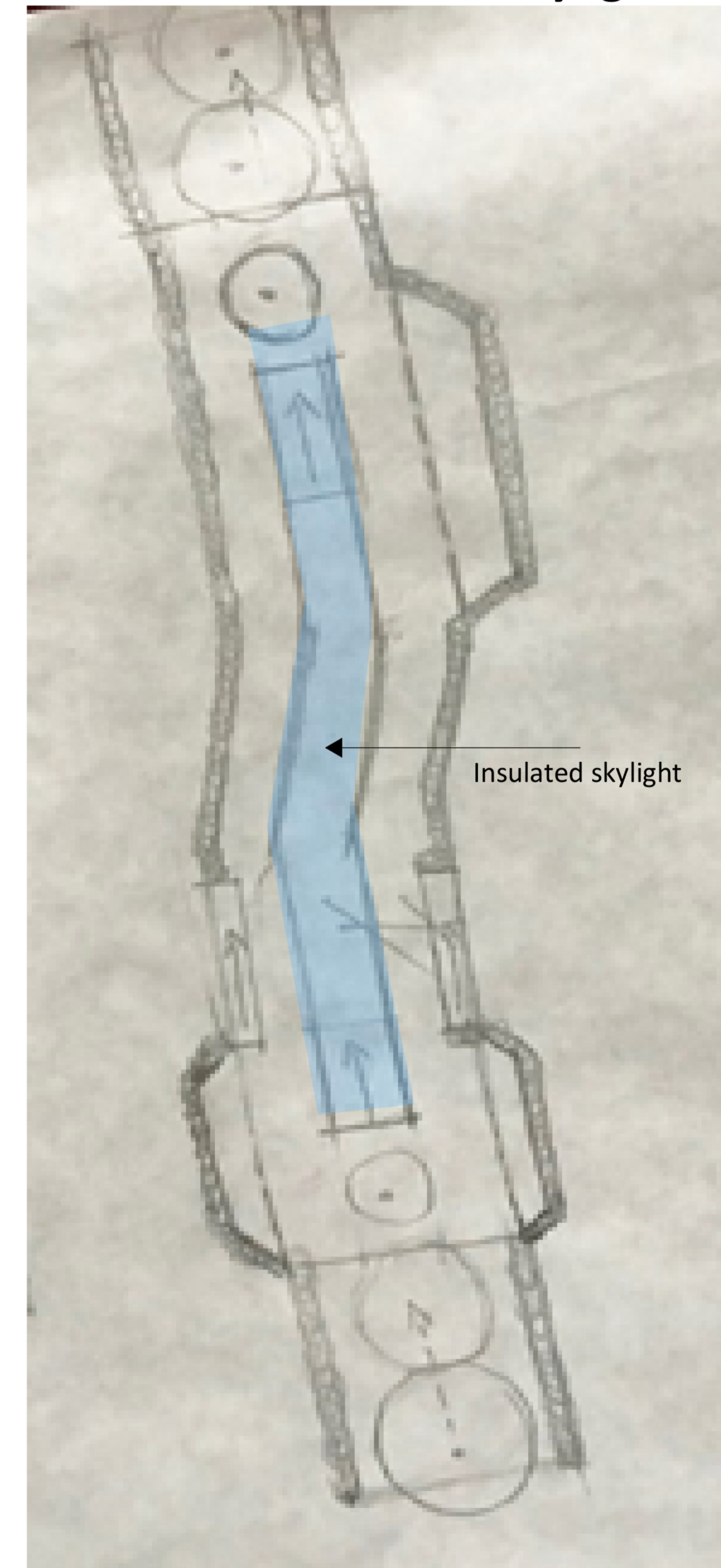
Bridge to Railways



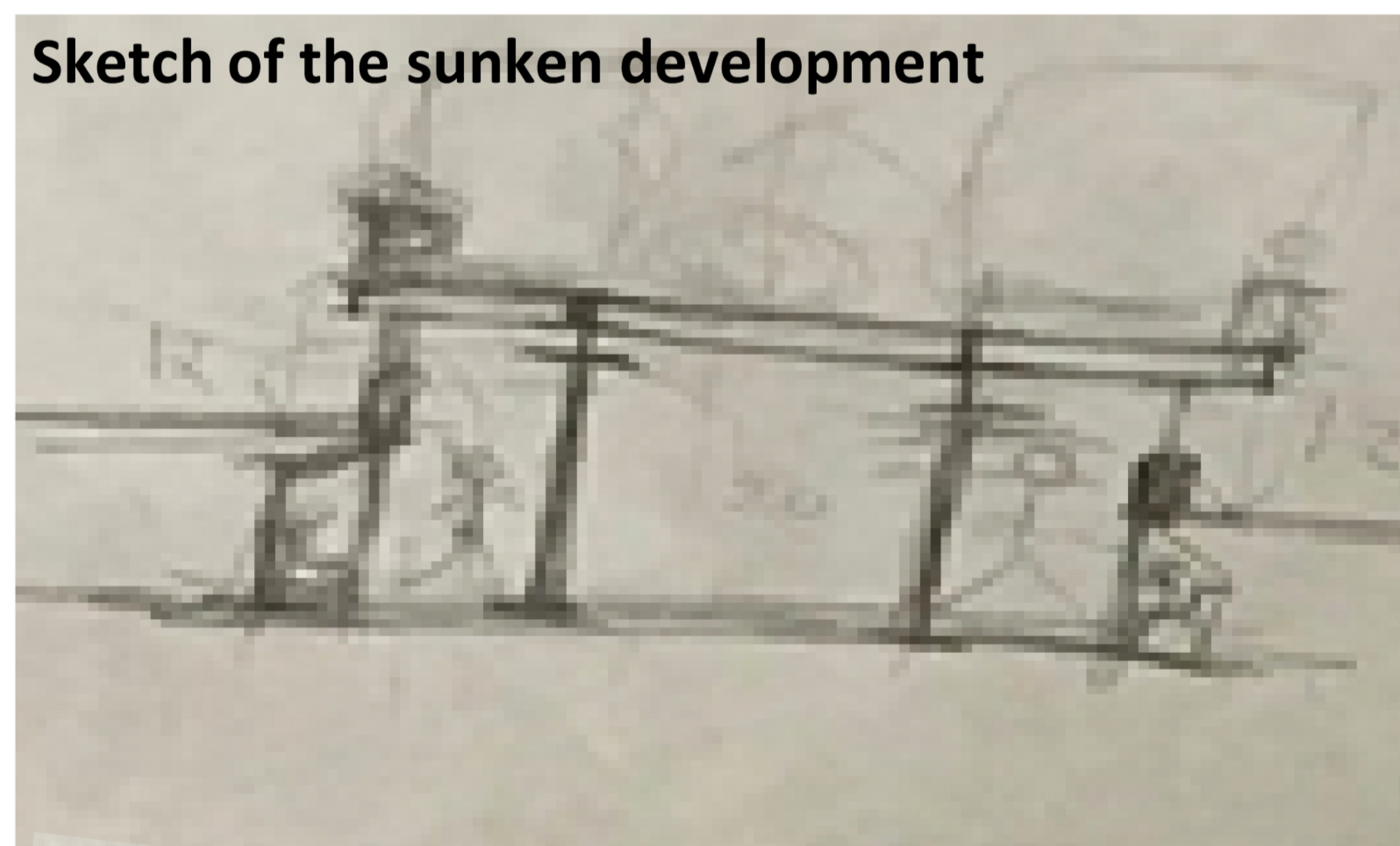
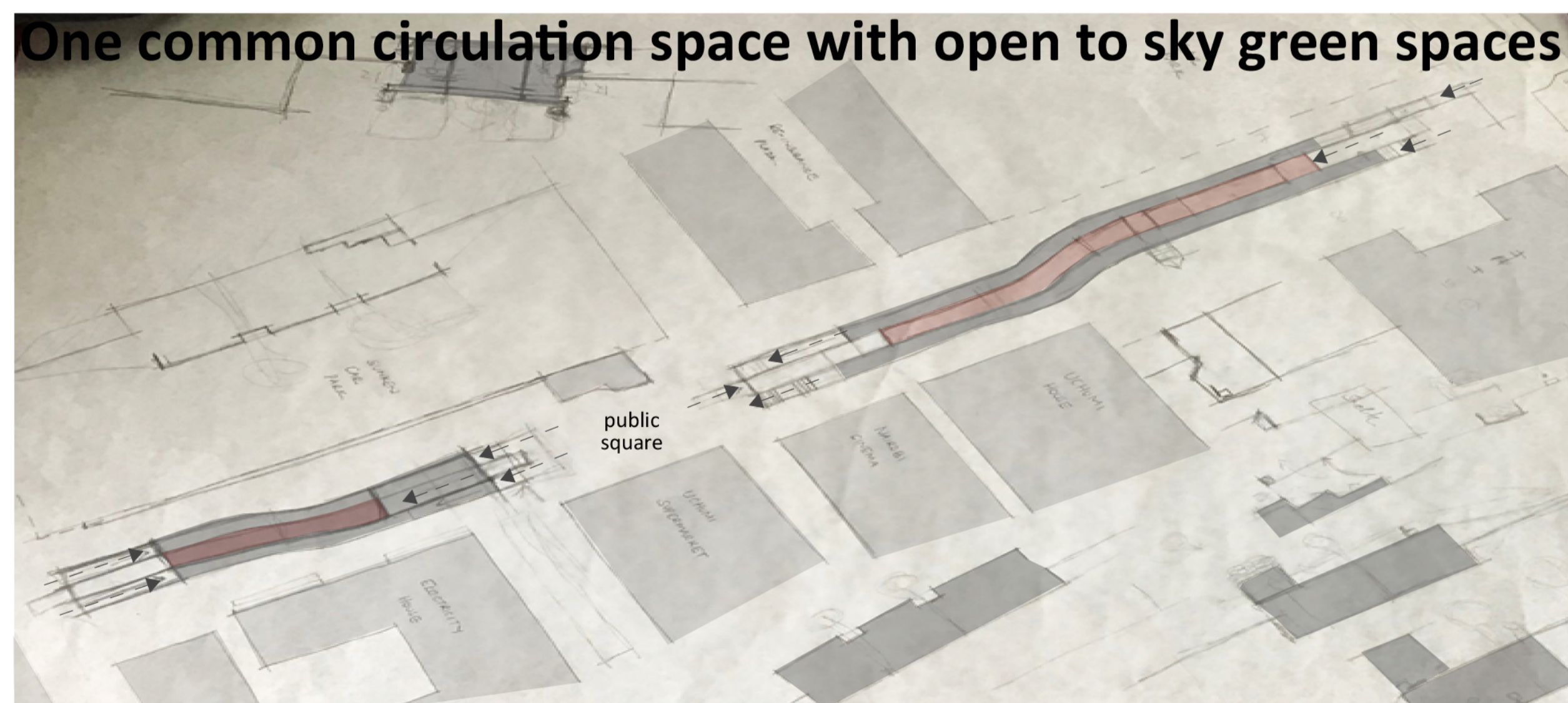
INTERMEDIATE DESIGN



Initial location of the skylight



FINAL DESIGN



Final design

